



Weather Forecasting For  
Traders, Investors, and Businesses

# US HRWW / S.AMERICA GRAIN WEATHER ISSUES

**as of FRIDAY**  
**2 FEBRUARY 2018**



LOCATED in Richmond VA

Featured frequently on AGRI-MONEY

**EMAIL WXRISK@VERZION .NET**



@WXRISK.COM

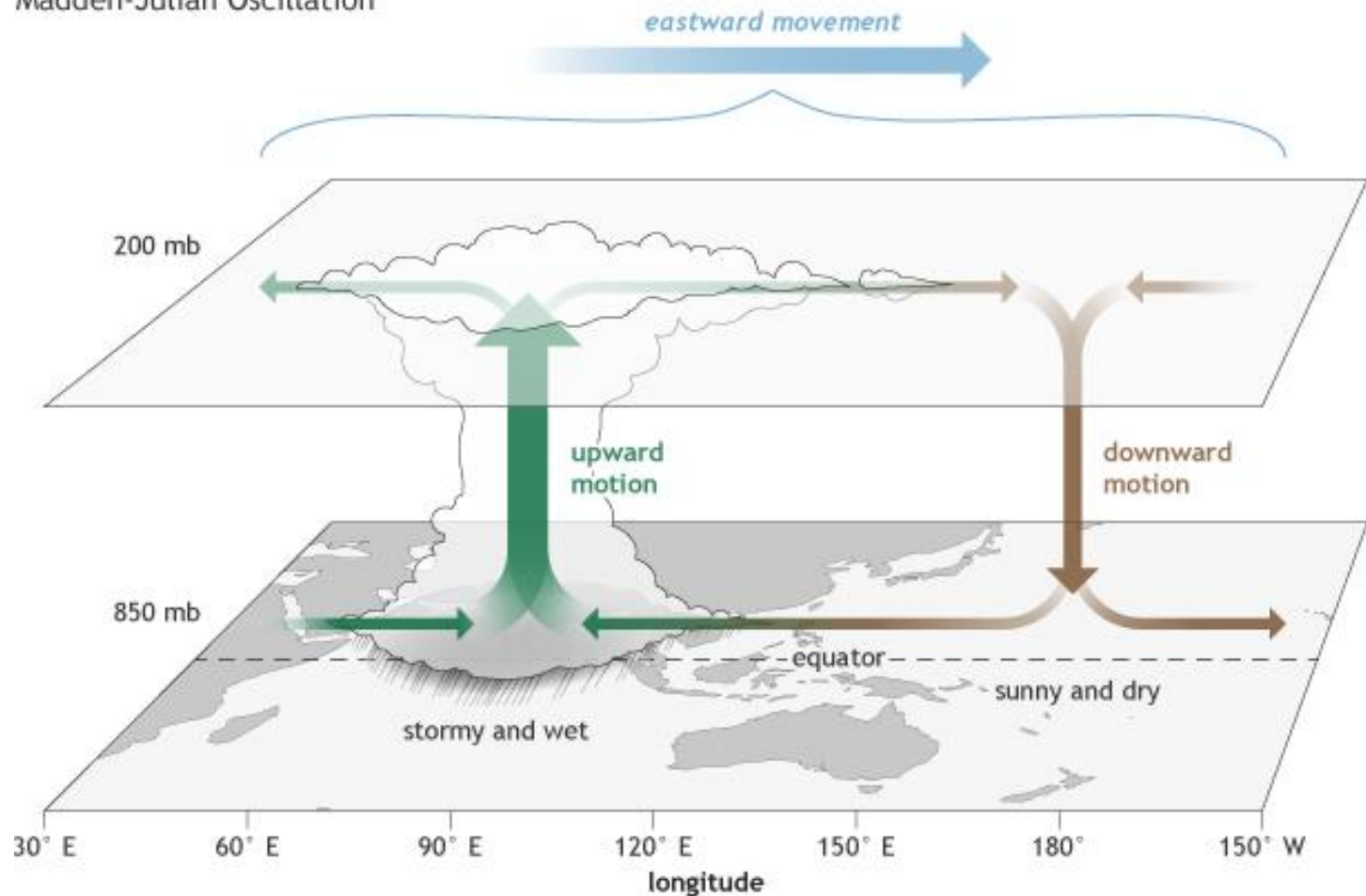


<https://www.facebook.com/WxRisk>

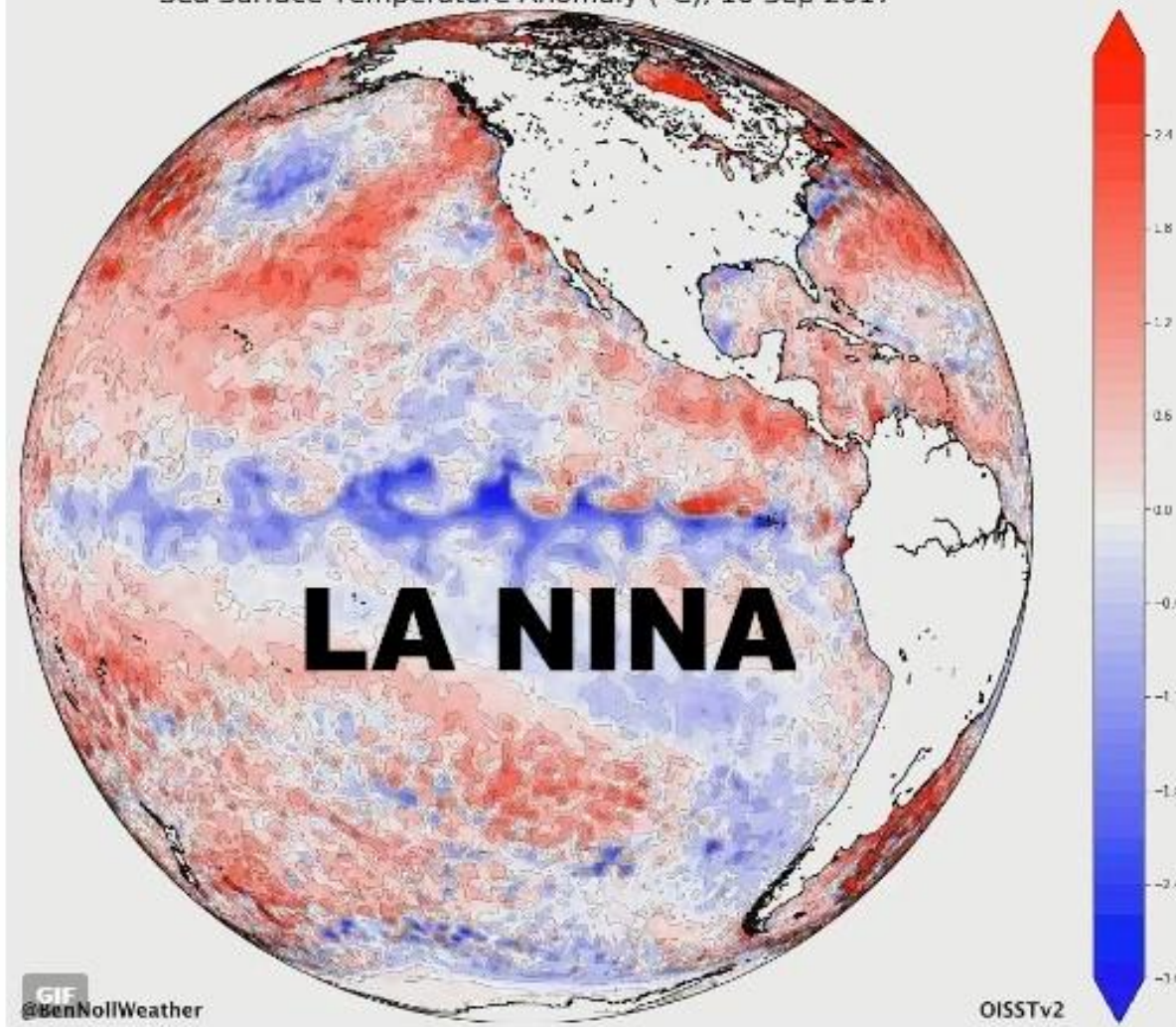
[wxrisk@gmail. com](mailto:wxrisk@gmail.com)

# LETS TALK MJO/ENSO

Madden-Julian Oscillation

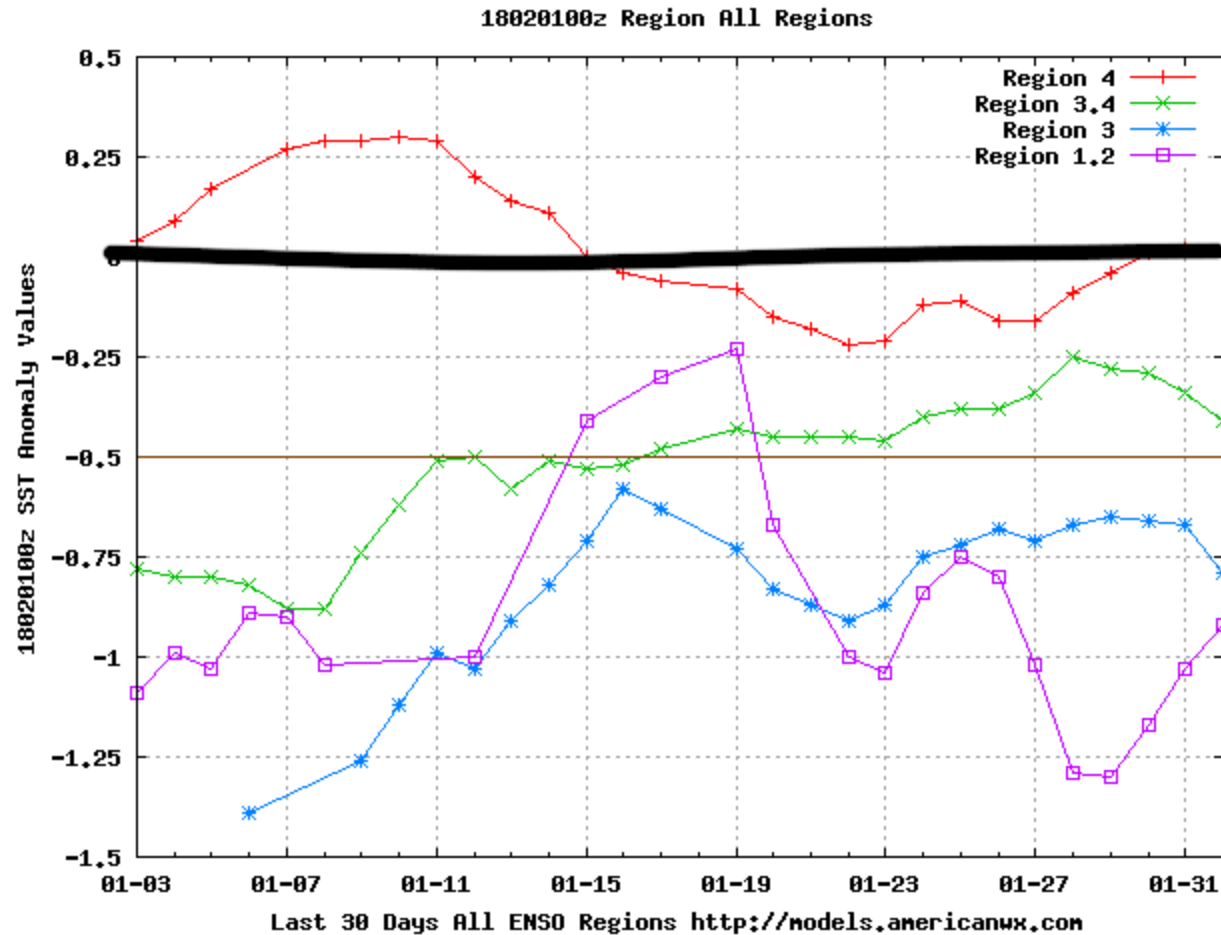


Sea Surface Temperature Anomaly (°C), 10 Sep 2017



6:29 AM - 13 Sep 2017

# ACTUAL SEA SURFACE TEMP ANOMALIES – of all 4 regions.. Is LA NINA weakening ?



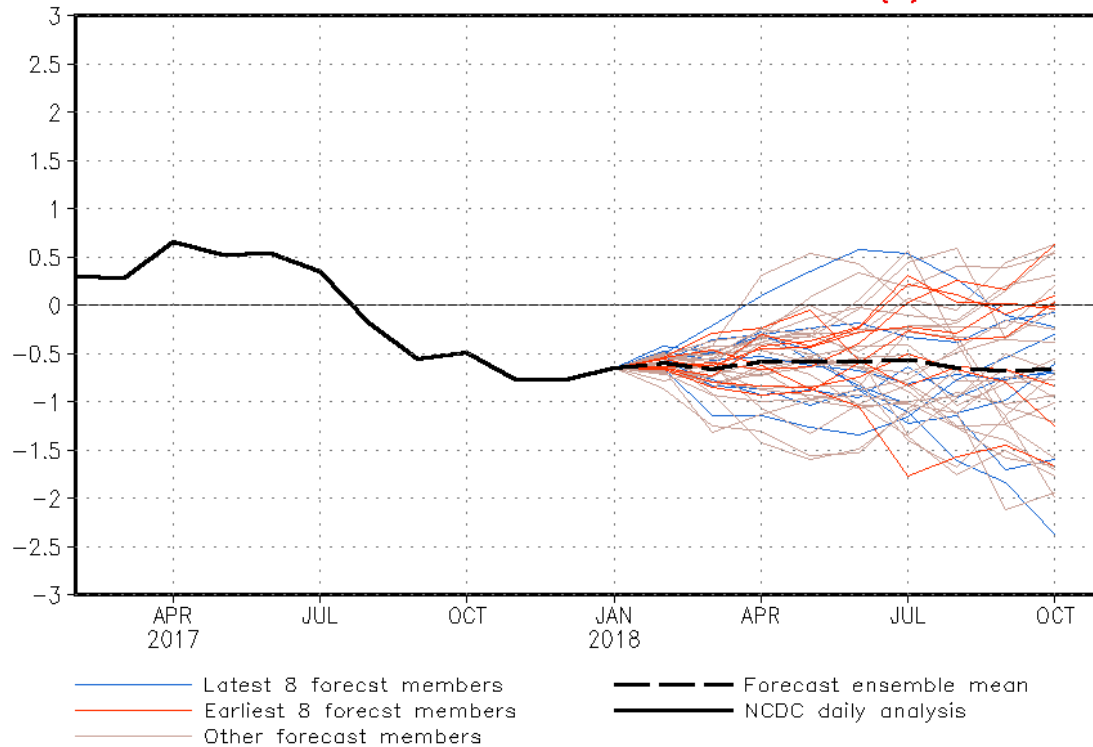
# **LATEST CFS MODEL PROJECTION = \*\* La Nina NEVER reaches threshold for MODERATE but stays weak into APRIL... Prolonging dry pattern into at least part of SPRING 2018**



NWS/NCEP/CPC

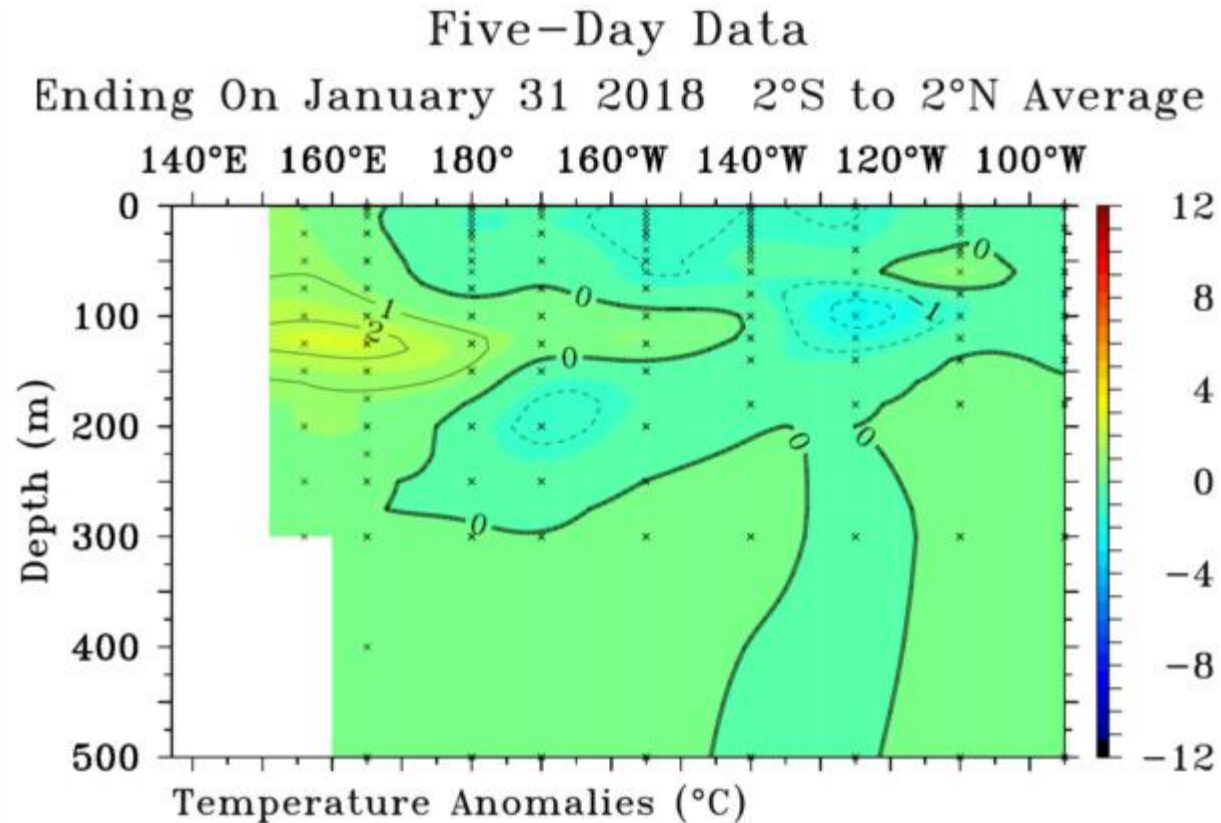
Last update: Thu Feb 1 2018  
Initial conditions: 2Jan2018–11Jan2018

CFSv2 forecast Nino3.4 SST anomalies (K)

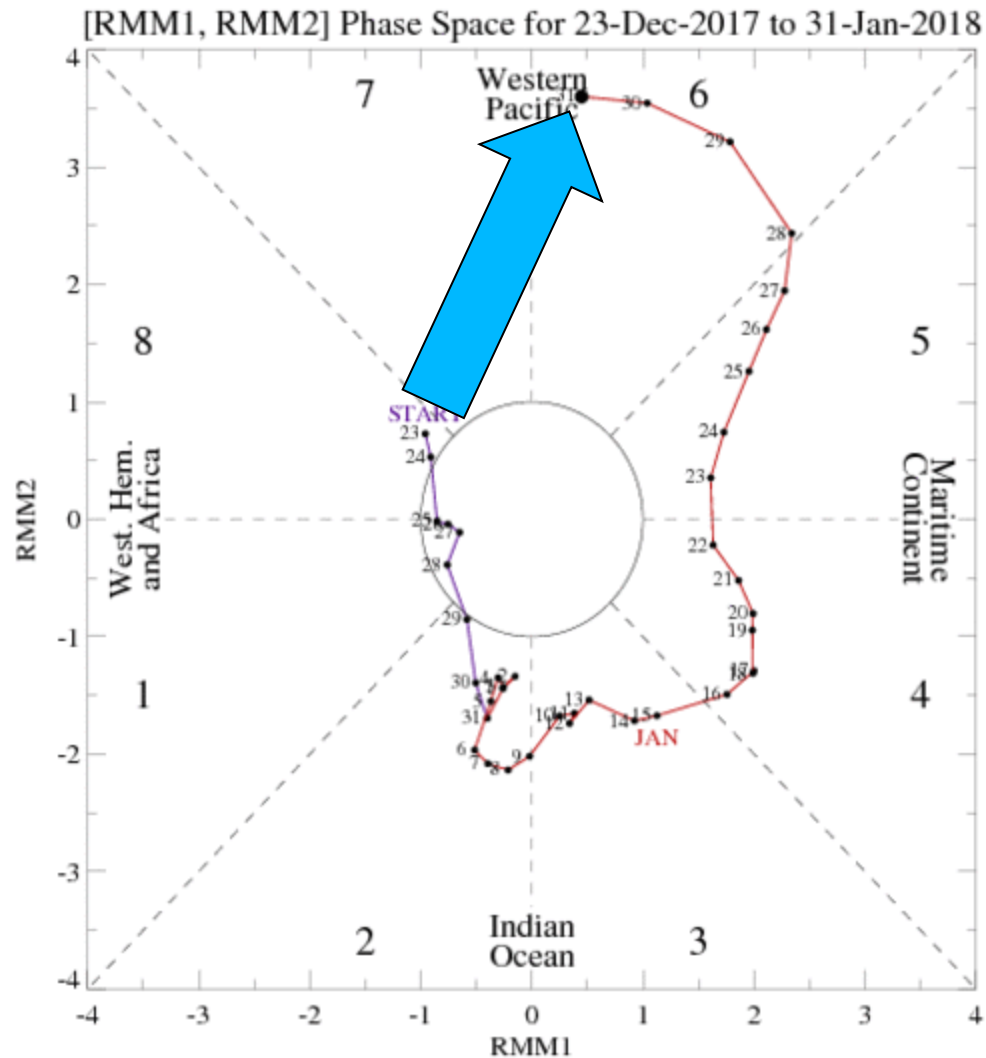




# LOOKING BENEATH THE SURFACE ALONG EQUATORIAL PACIFIC ...WEAK LA NINA HOLDING ON



# MJO IS IN PHASE 6

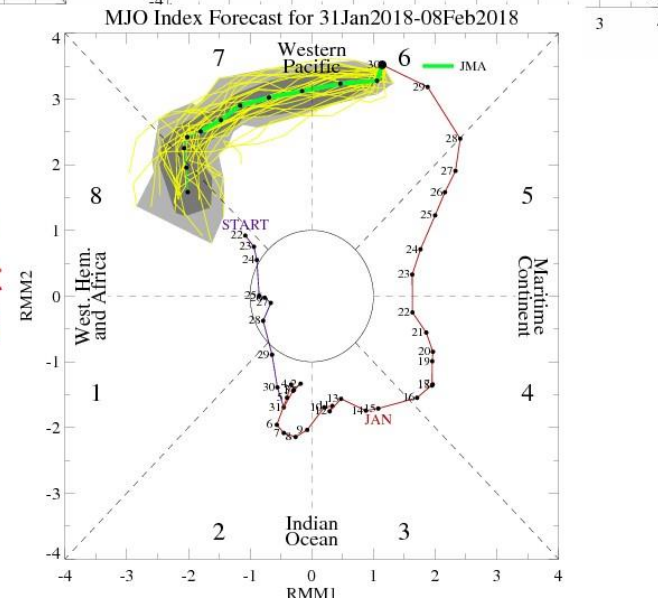
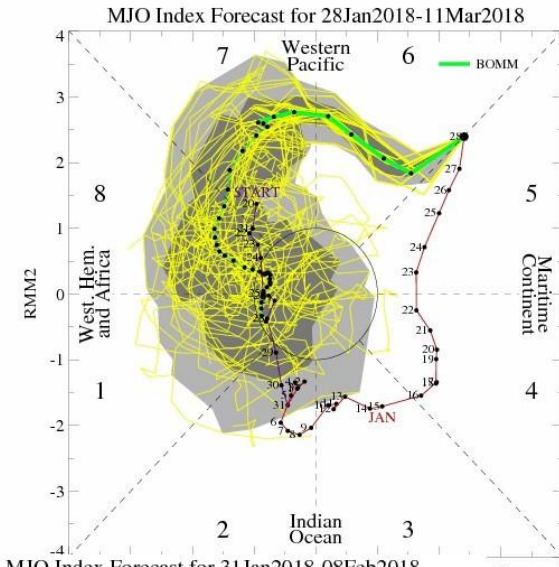
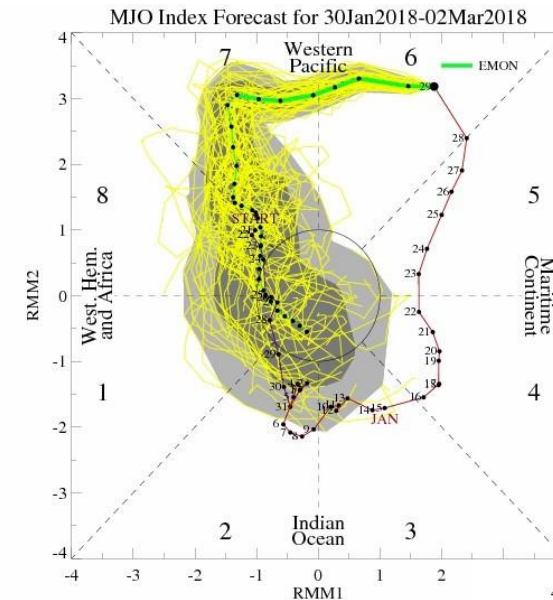




**A FEW DAYS AGO THE MJO MODELS HAD 'TURNED' and SHOWED MJO WOULD BREAK DOWN IN PHASE 8... AND WOULD NOT MAKE IT TO PHaSE 1-2...**

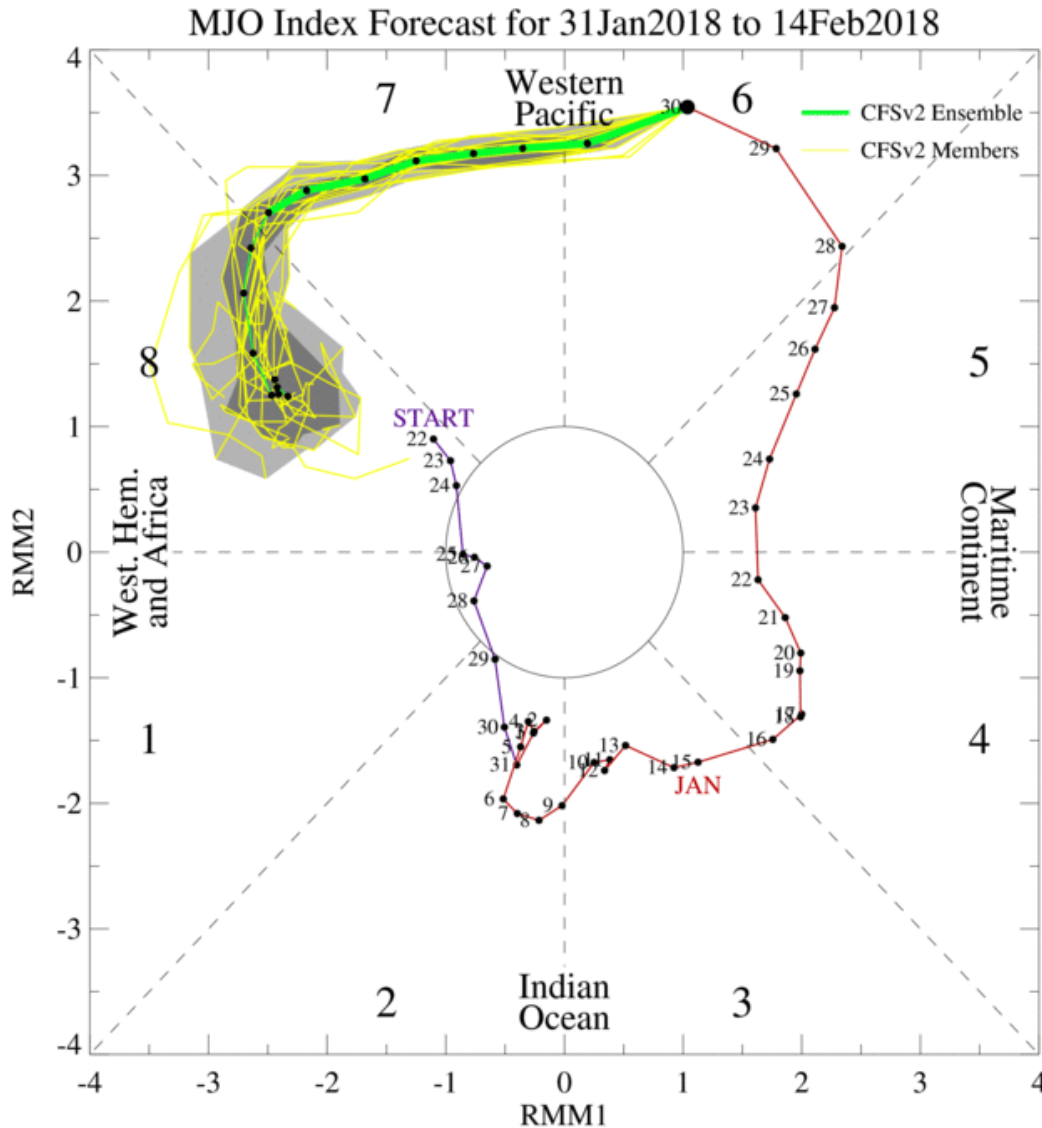
**For CONUS - phase 8-1-2 = dry cold for / Midwest Plains so if this MJO breaks downs it would imply more rain for Plains.**

**For S. America this would mean more Rain for ARG less rain for Brazil**

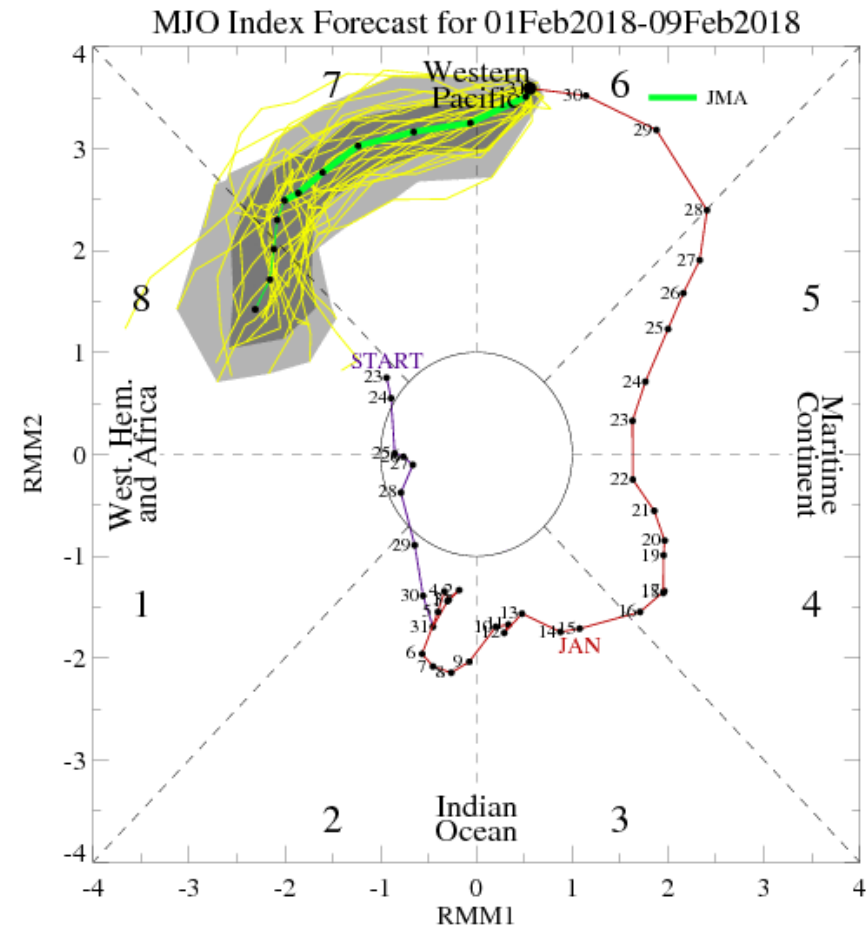
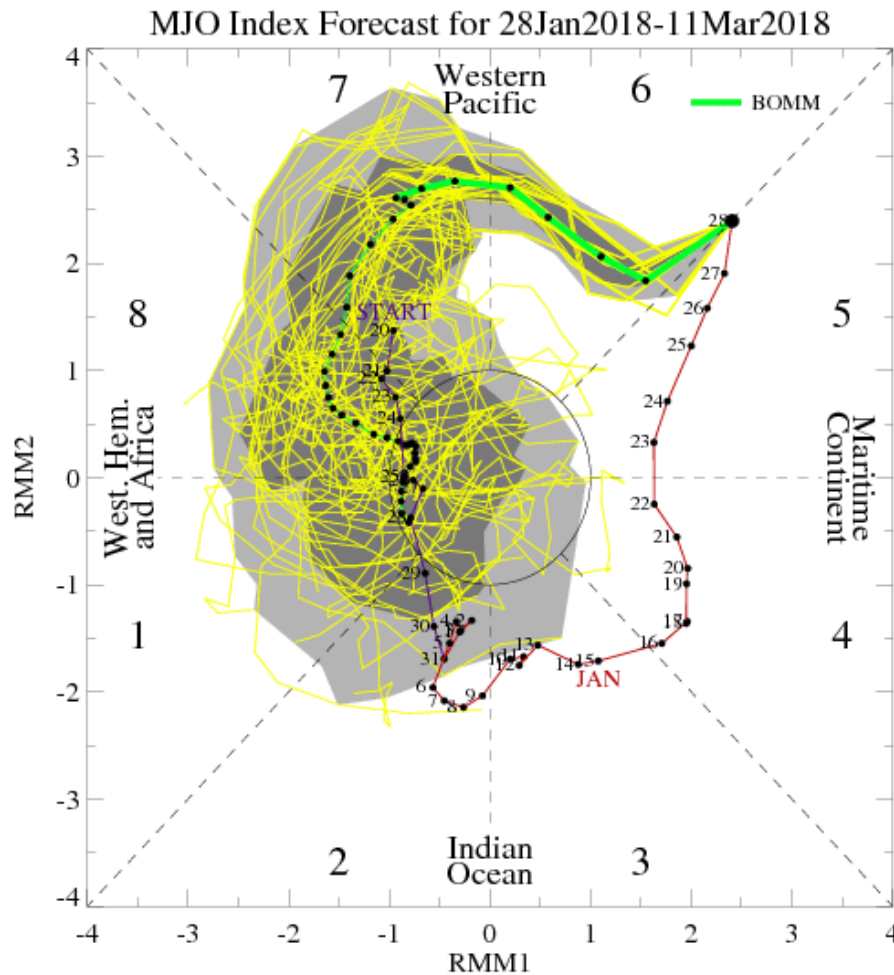


What is "NEW" here is that these MJO forecasts take the very strong MJO then suddenly weaken in it with a massive fall off as it reaches Phase 8... Note how the MJO towards sharply towards Neutral Circle in Mid or late FEB

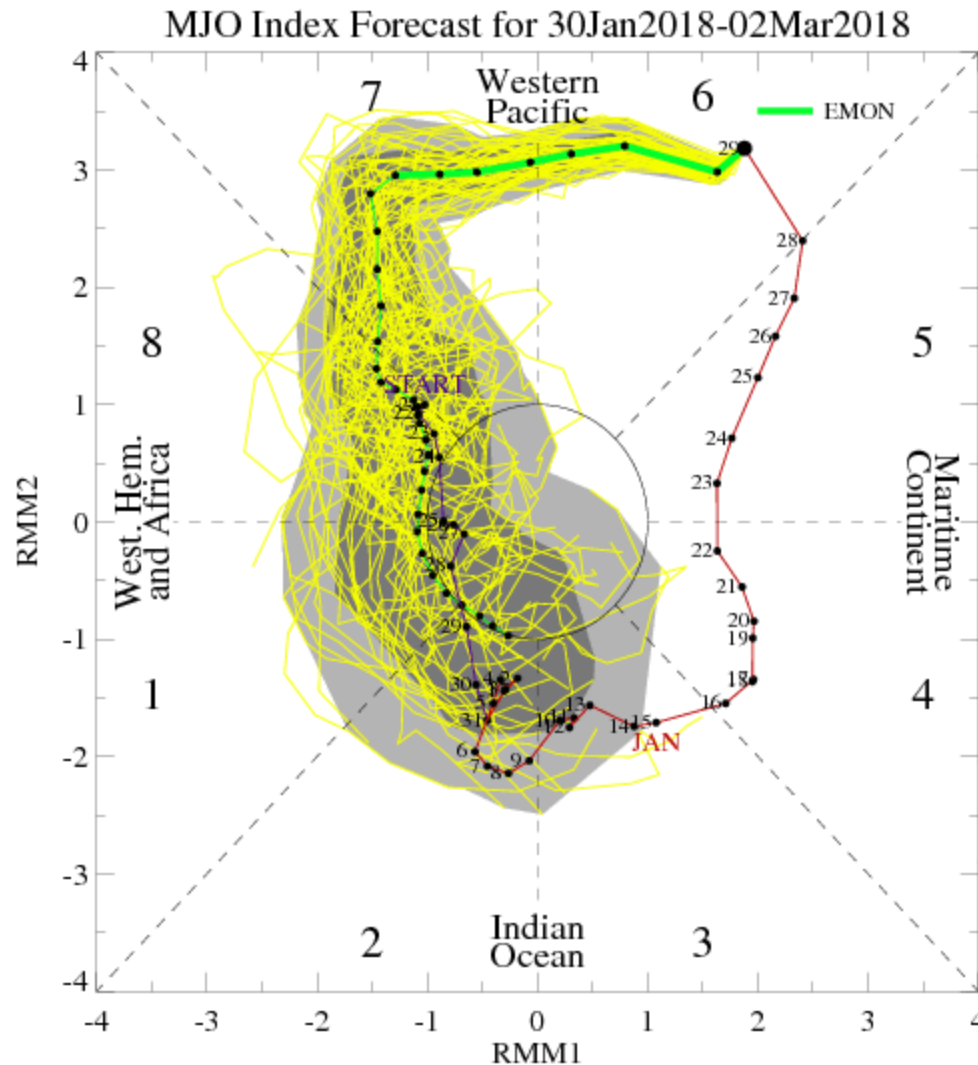
# New data may be reversing that trend CFSMJO forecast says hell yeah strong Phase 8 BY Mid Feb



# New AUS and JAPAN MJO forecast MJO tracks also ..hell yeah strong phase 8 ... Phase 1 still uncertain



for some reason **NEW EURO** models have **NOT** updated in 3 days !! Its driving me nuts

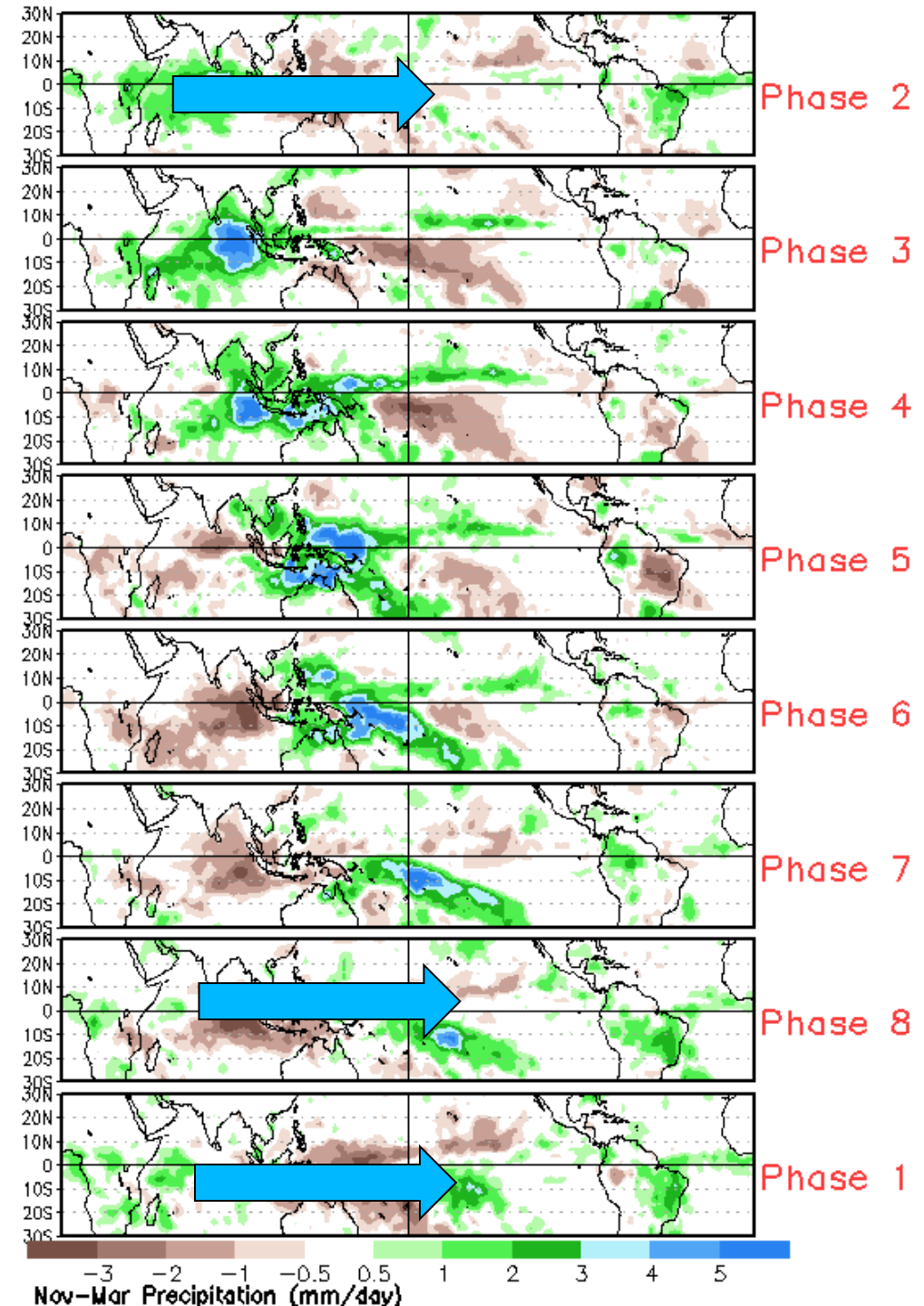


**PHASE 7 west  
BRAZIL TURNS  
WET NORMAL  
RAINS OVER  
ARG**

**PHASE 8**

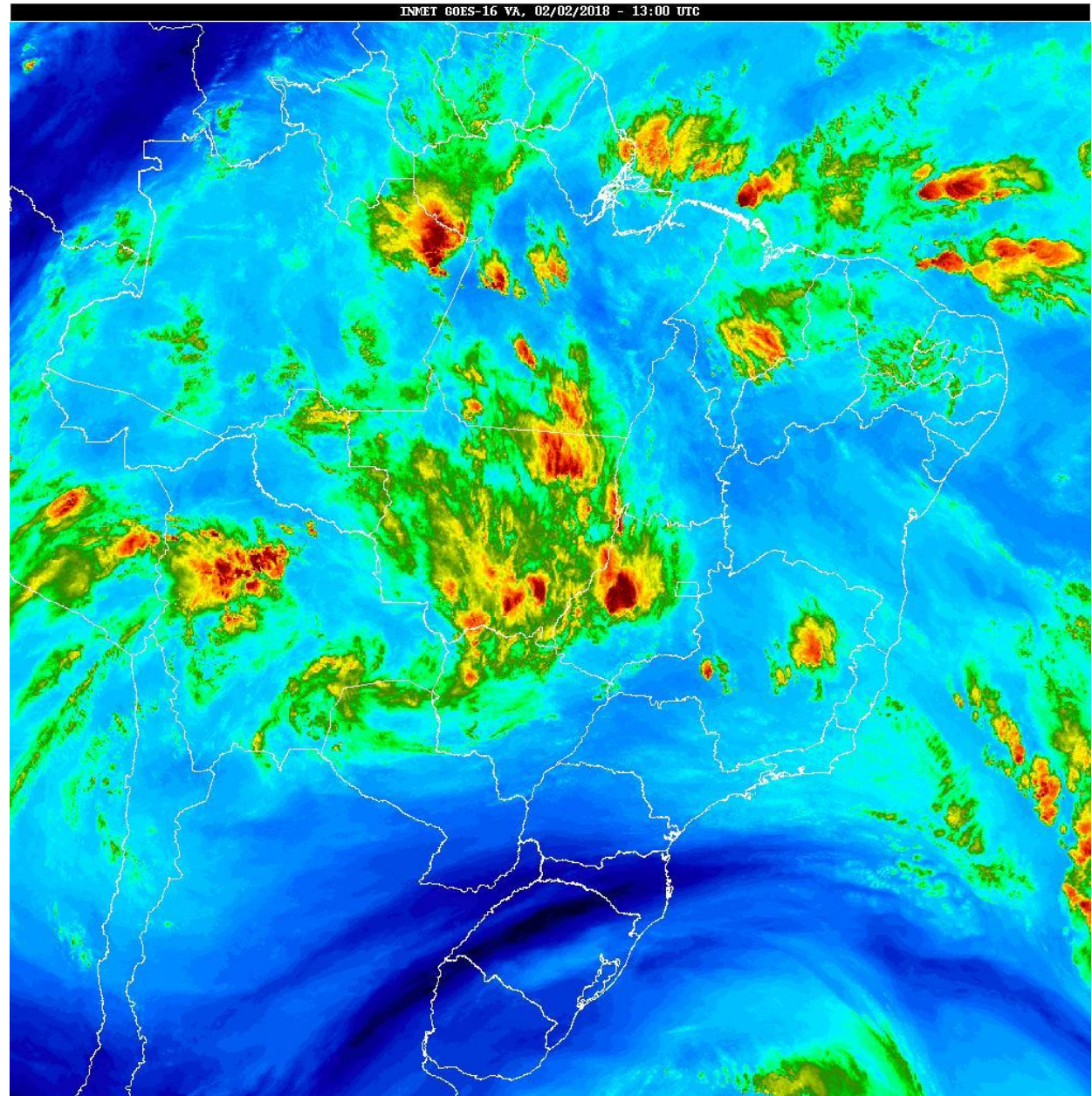
**PHASE 1**

**PHASE 2**

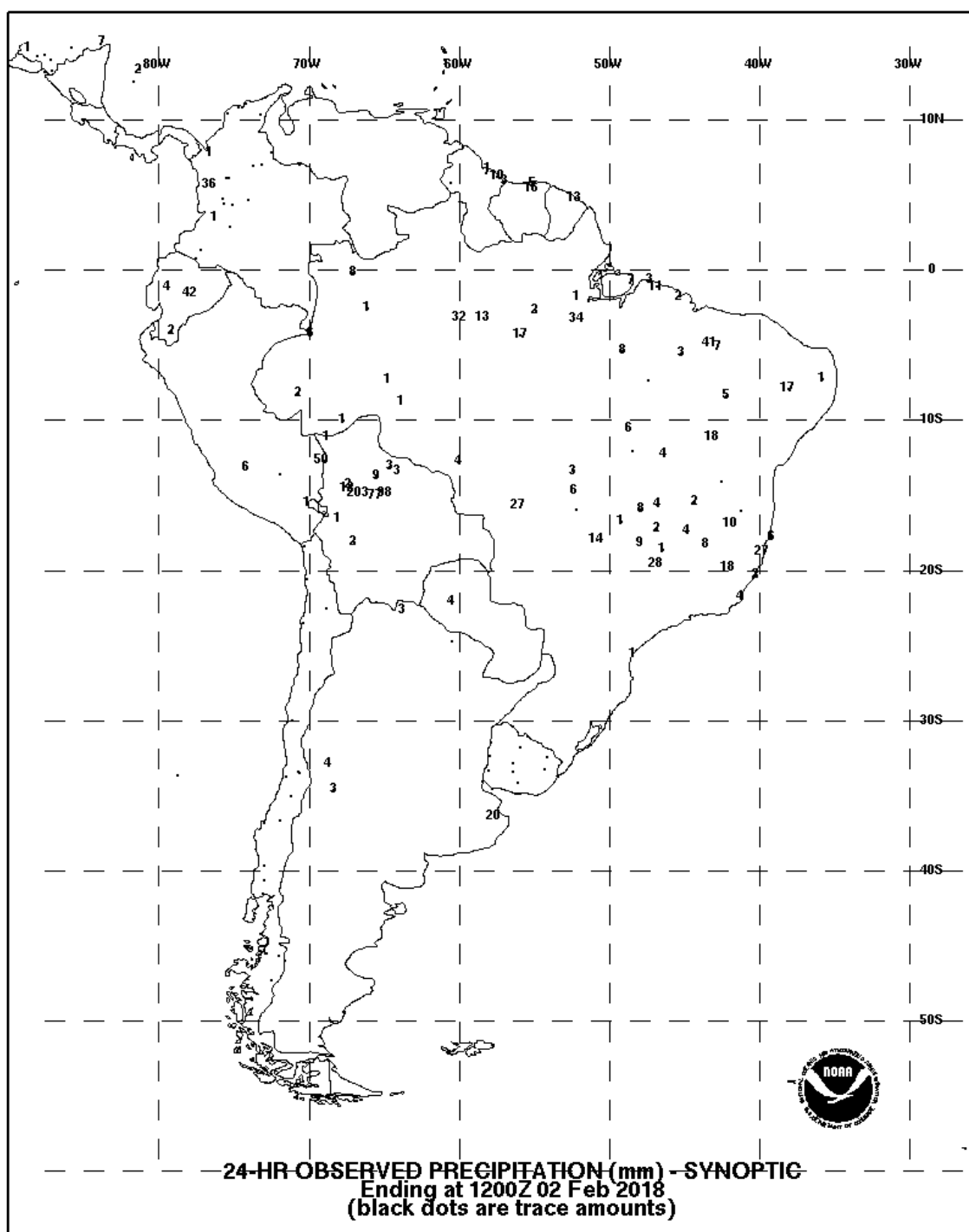




**MID FRI  
MORNING INFRA  
RED SATELLITE**





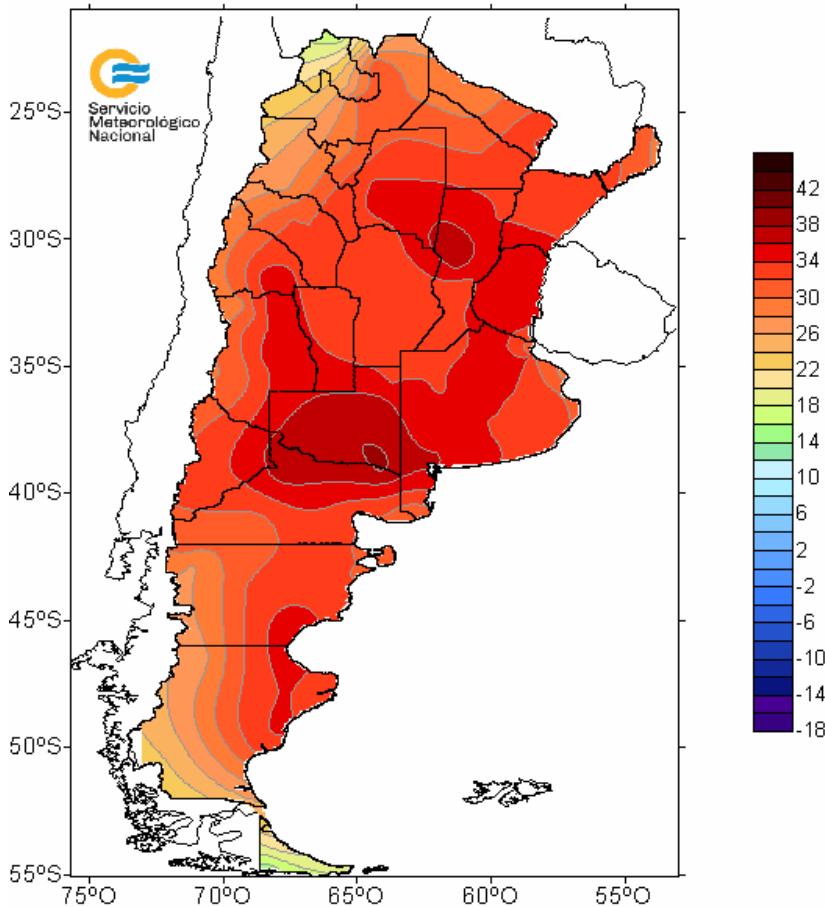


# MAX TEMP FEB 1 INA AG & BRAZIL...

## Notice in ARG many areas 34-36c/ 94-97f

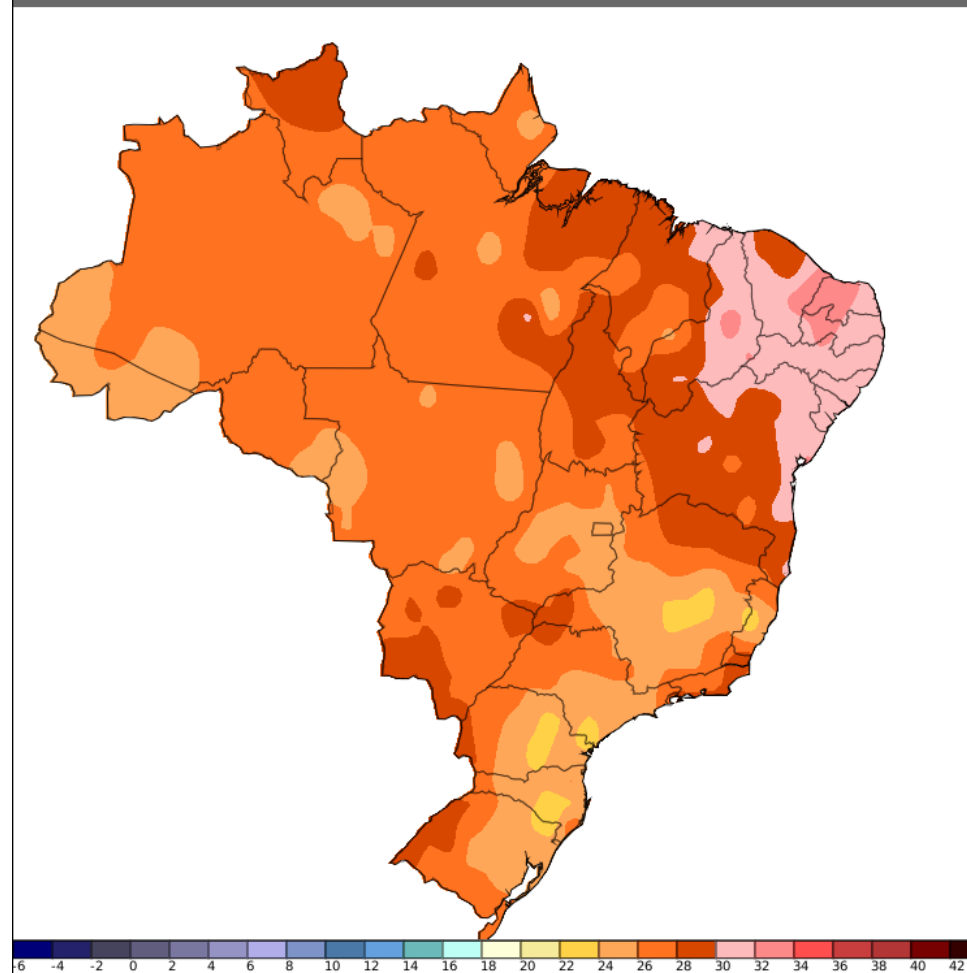
### TEMPERATURAS MAXIMAS

01 de Febrero de 2018



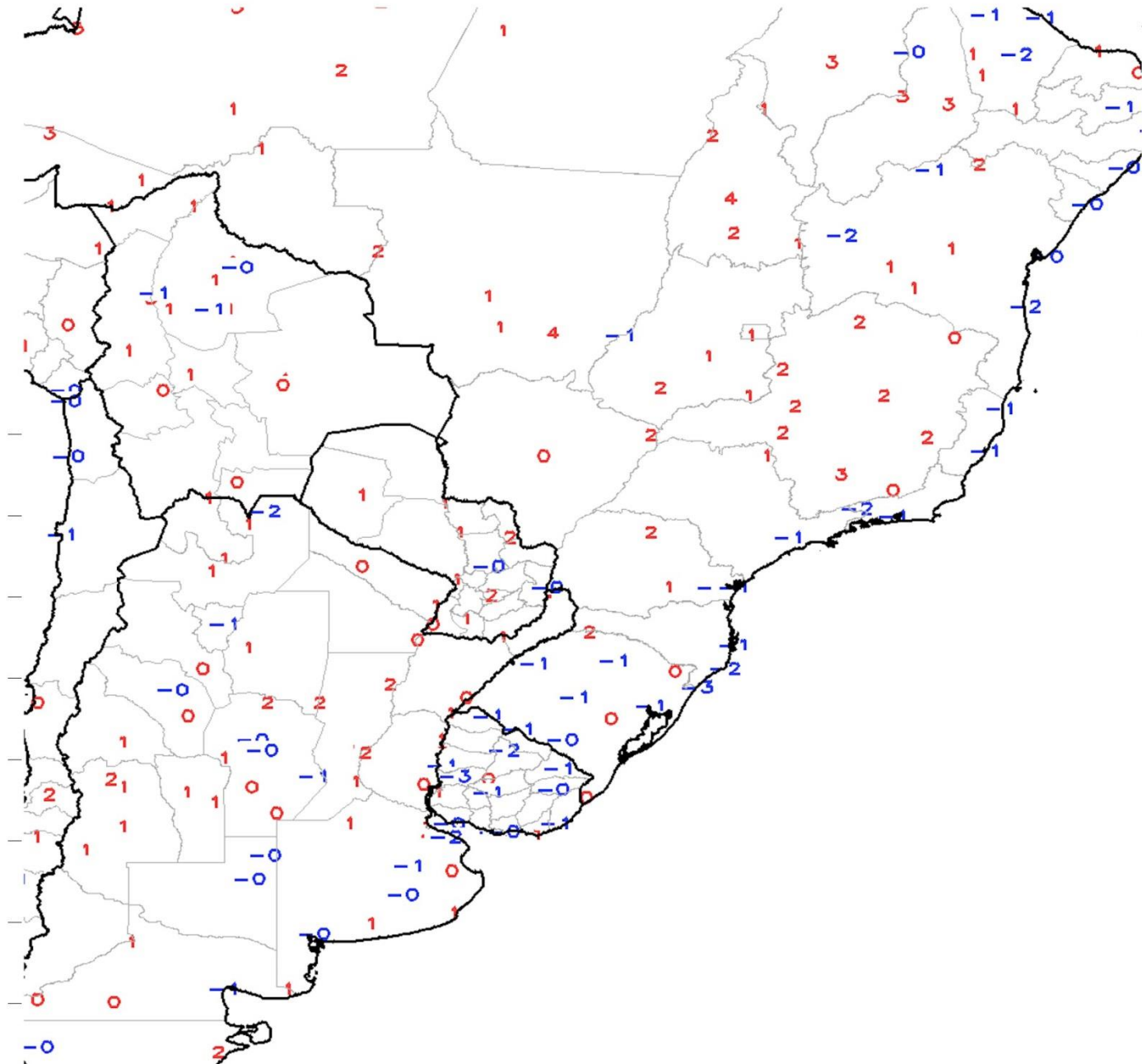
Servicio Meteorológico Nacional

Instituto Nacional de Meteorologia - INMET  
Temperatura Máxima (°C)  
Informações Sinóticas do dia 02/02/2018 às 13:00 UTC



# GTS Station Running 7-Day Average Temperature Anomaly (C)

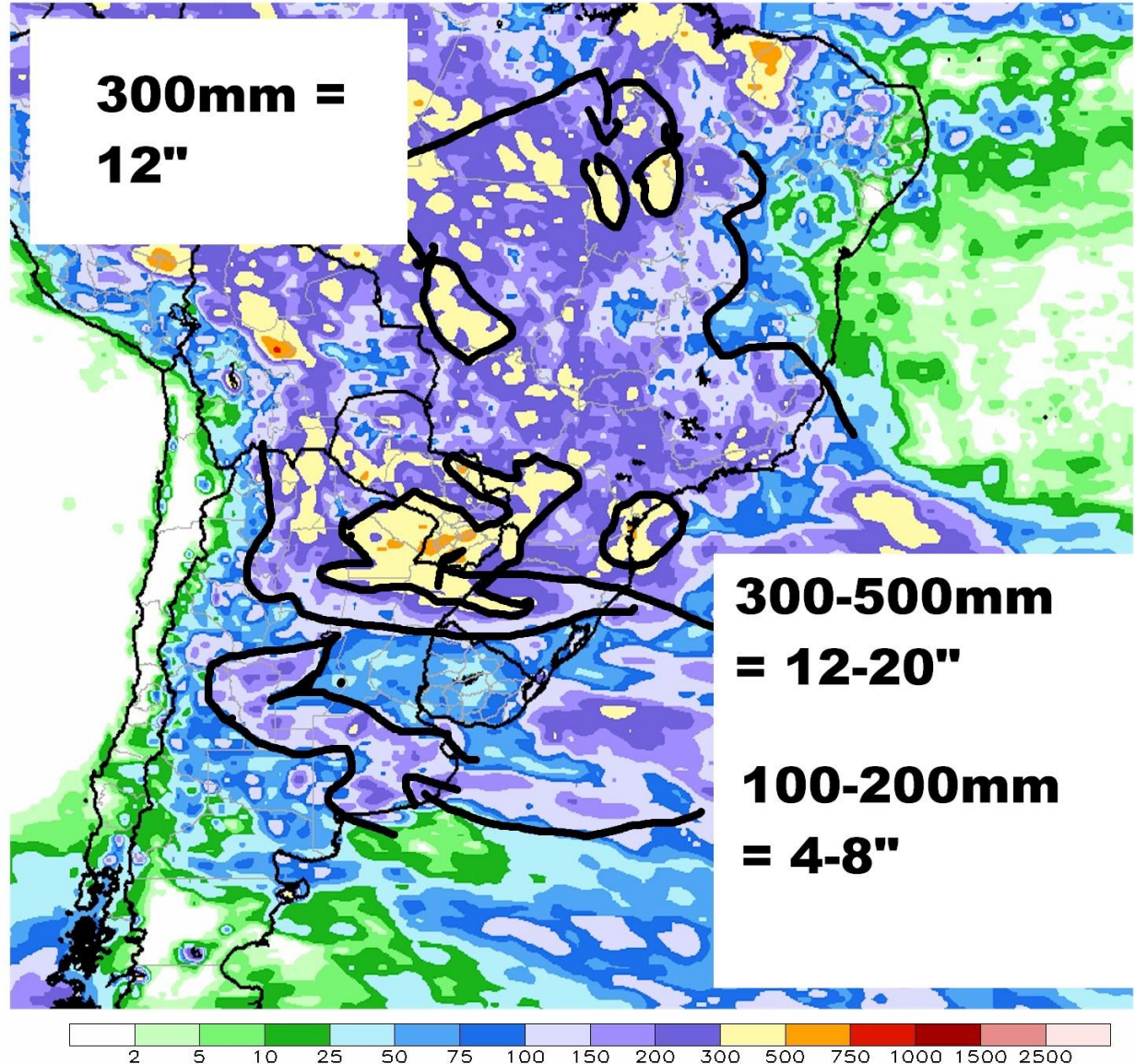
Period: 25Jan2018 – 31Jan2018



# ACTUAL RAINFALL JAN 2018

CMORPH 1-Month Total Rainfall (mm)

Period: 01Jan2018 - 31Jan2018

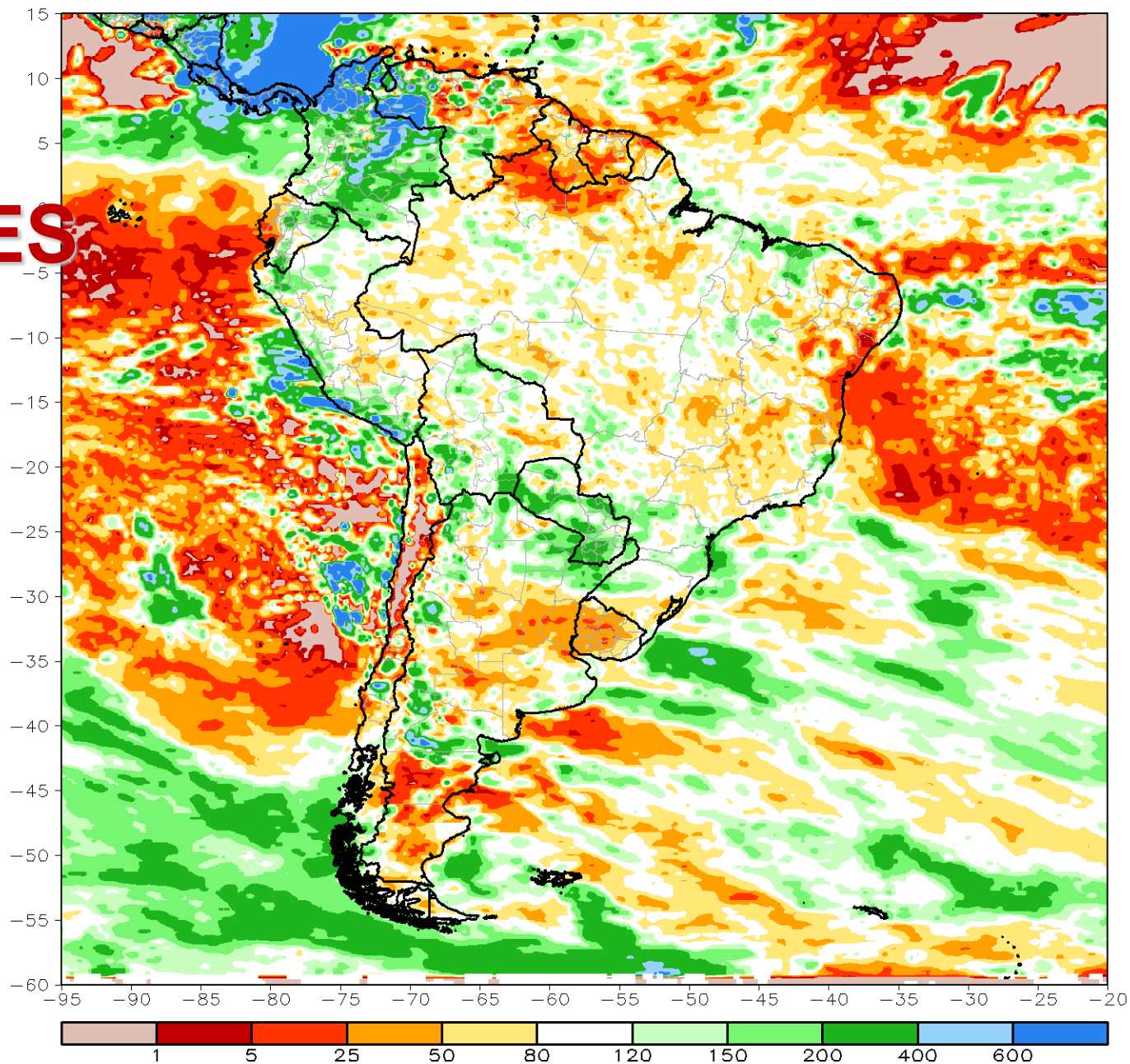




CMORPH 1-Month Percent of Normal Rainfall (%)

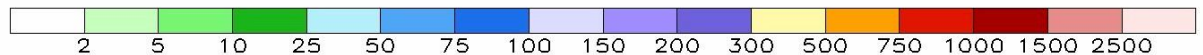
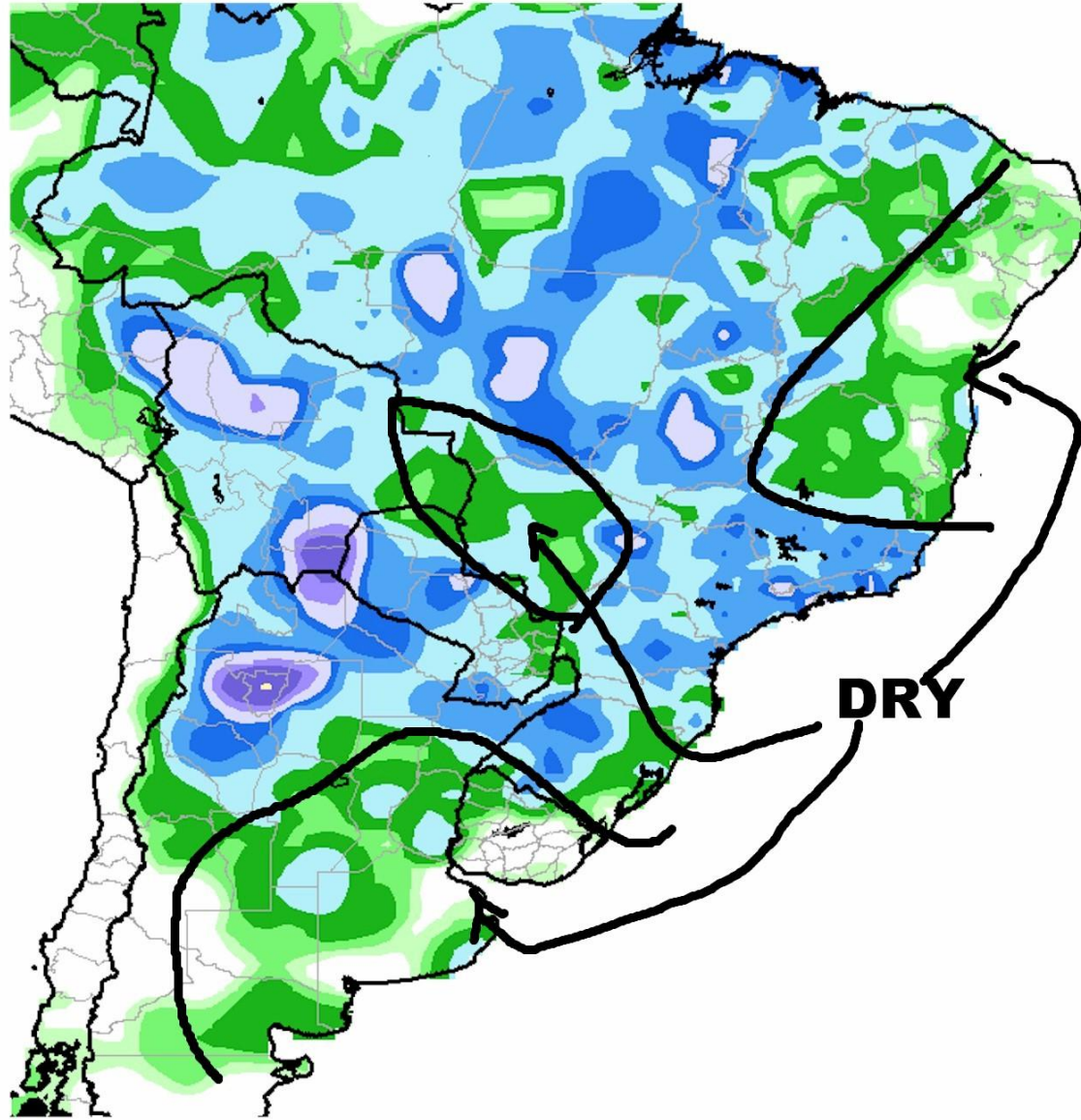
Period: 01Jan2018 - 31Jan2018

# RAINFALL ANOMALIES JAN 2018



CPC Unified Gauge 7-Day Total Rainfall (mm)  
Period: 25Jan2018 - 31Jan2018

# ACTUAL RAINFALL LAST 7 DAYS

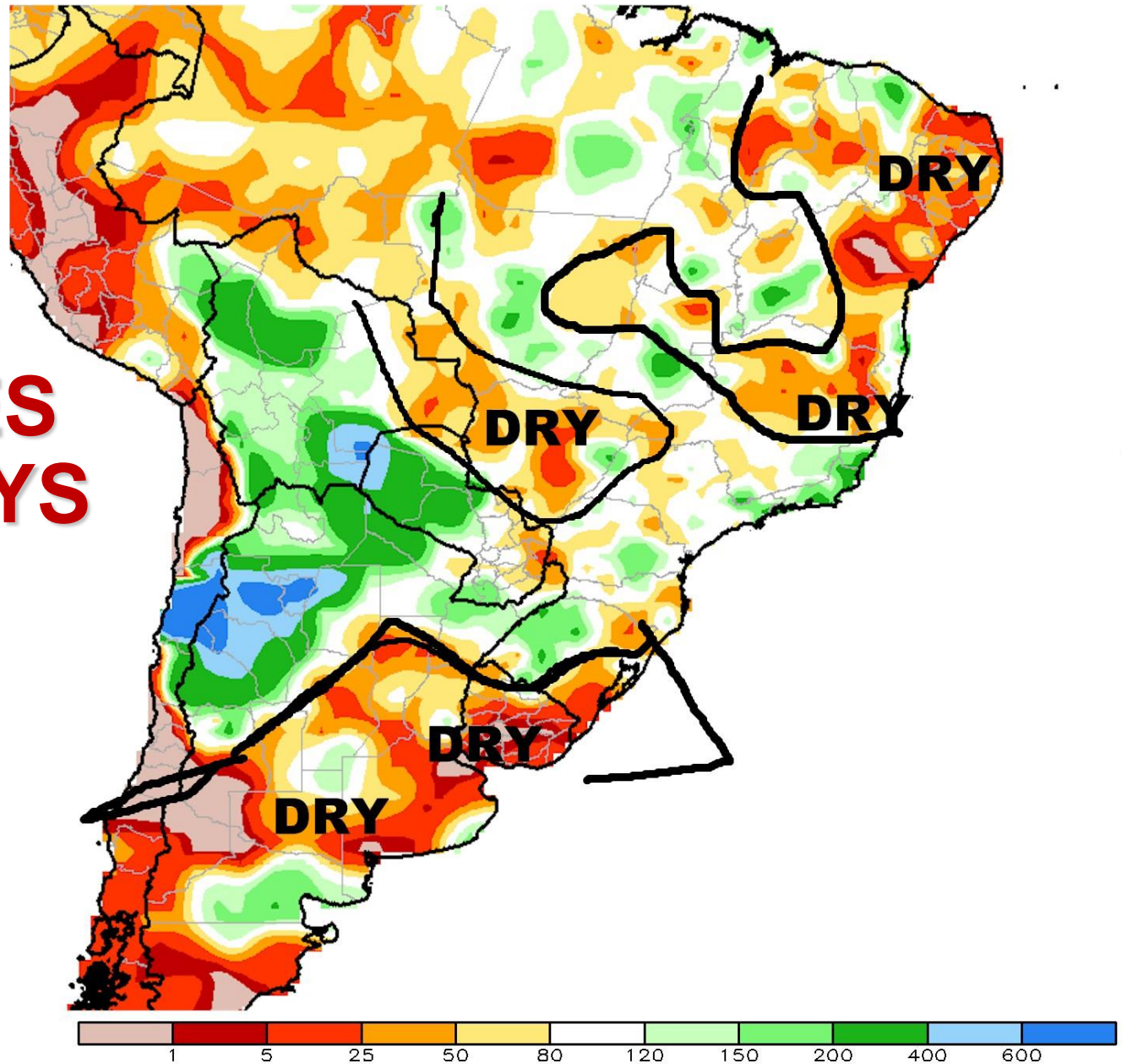




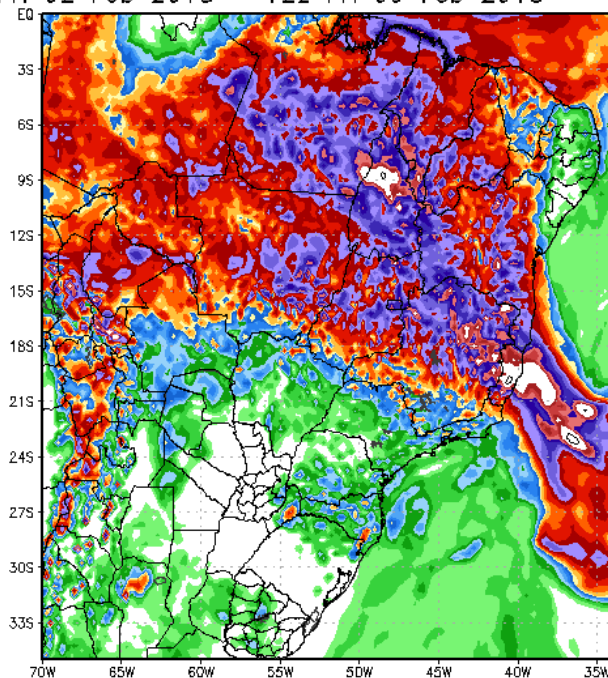
CPC Unified Gauge 7-Day Percent of Normal Rainfall (%)

Period: 25Jan2018 - 31Jan2018

# RAINFALL ANOMALIES LAST 7 DAYS



180 Hour Total Precipitation (in)  
Valid: 00z Fri 02 Feb 2018 – 12z Fri 09 Feb 2018



Max: 20.7 in  
Min: 0.0 in

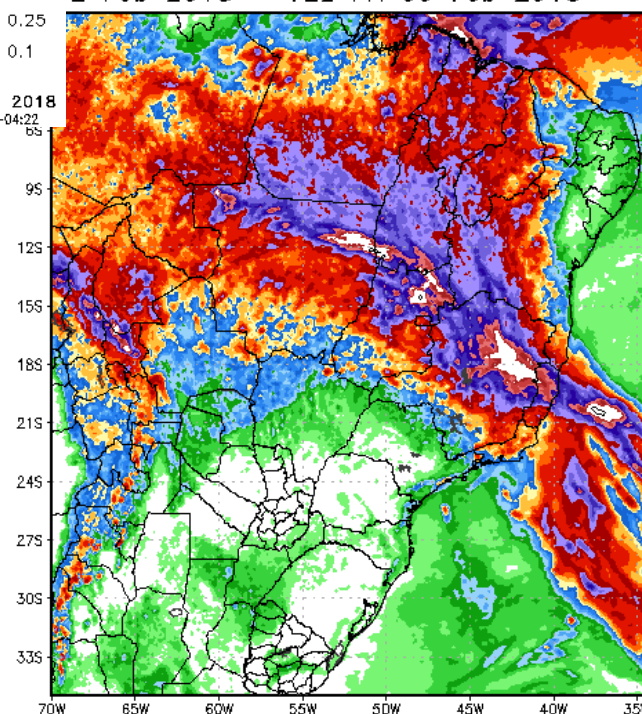
StormVistaWxModels.com

GFS-MAXRES  
Hour: 0 – 180

# BRAZIL RAINFALL NEXT 5 DAYS

Precipitation (in)  
02 Feb 2018 – 12z Fri 09 Feb 2018

Init: 00z Fri 02 Feb 2018  
2018-02-02-04:22



Max: 20.0 in  
Min: 0.0 in

StormVistaWxModels.com

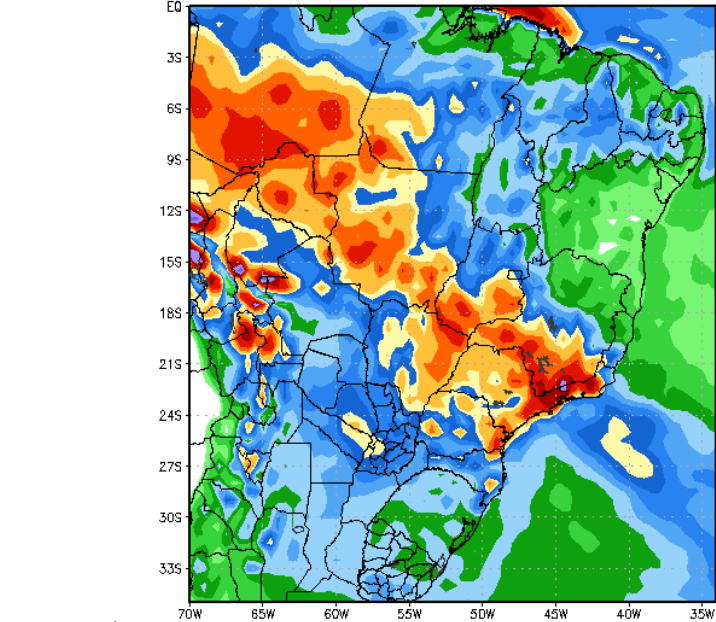
ECMWF-MAXRES  
Hour: 0 – 180

Init: 00z Fri 02 Feb 2018  
2018-02-02-06:39

**EXCELLENT** model  
agreement. SE / SW Brazil  
4-12"/ 100-300mm rains 80%  
of Minas 4-8"/ 100-200mm  
80% Goias Mato Grosso  
Tocantins sw Bahia

# 120 Hour Total Precipitation (in)

Valid: 12z Fri 09 Feb 2018 - 12z Wed 14 Feb 2018

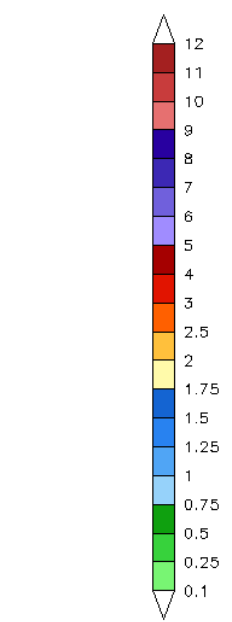


Max: 6.8 in  
Min: 0.0 in

StormVistaWxModels.com

## GFS-ENS-MAXRES

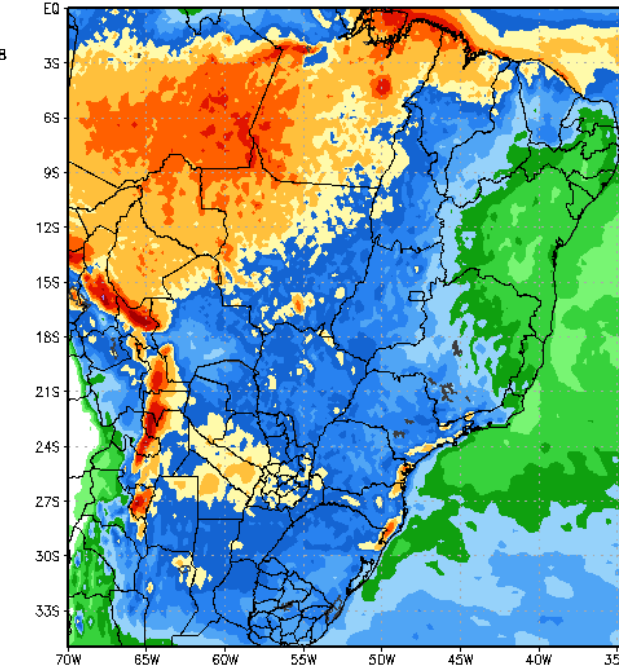
Hour: 180 - 300



Init: 00z Fri 02 Feb 2018  
2018-02-02-05:24

# Total Precipitation (in)

Fri 09 Feb 2018 - 12z Wed 14 Feb 2018

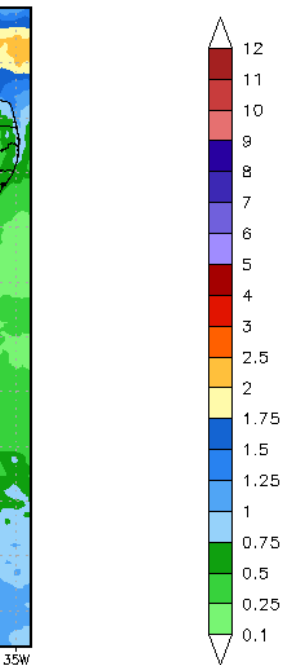


Max: 5.4 in  
Min: 0.0 in

StormVistaWxModels.com

## ECMWF-EPS-MAXRES

Hour: 180 - 300



Init: 00z Fri 02 Feb 2018  
2018-02-02-07:51

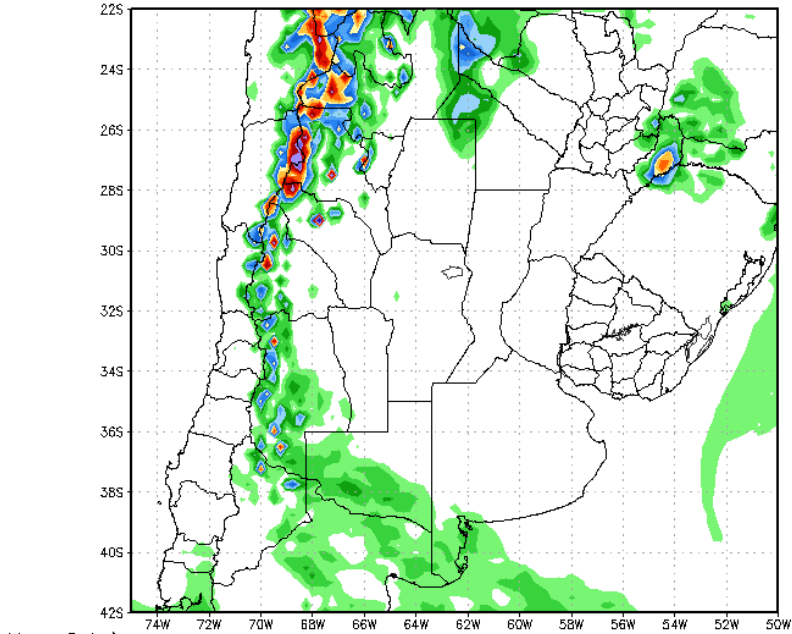


120 Hour Total Precipitation (in)

Valid: 00z Fri 02 Feb 2018 - 00z Wed 07 Feb 2018

GFS-MAXRES

Hour: 0 - 120



Max: 9.1 in  
Min: 0.0 in

StormVistaWxModels.com

Init: 00z Fri 02 Feb 2018  
2018-02-02-04:04

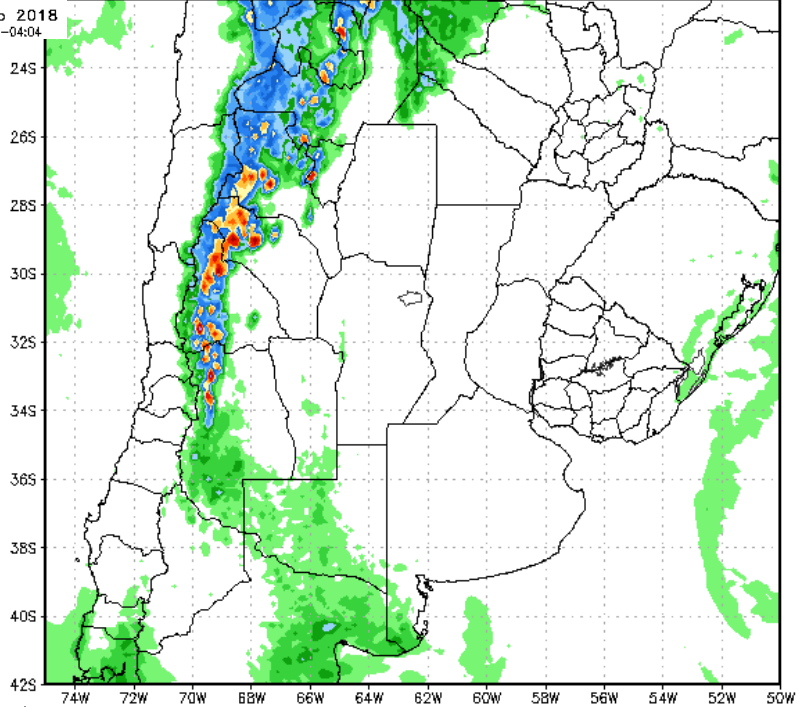
# NEXT 5 DAYS

otal Precipitation (in)

Fri 02 Feb 2018 - 00z Wed 07 Feb 2018

ECMWF-MAXRES

Hour: 0 - 120



Max: 5.6 in  
Min: 0.0 in

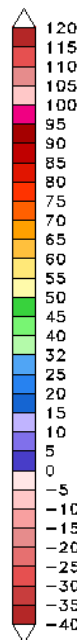
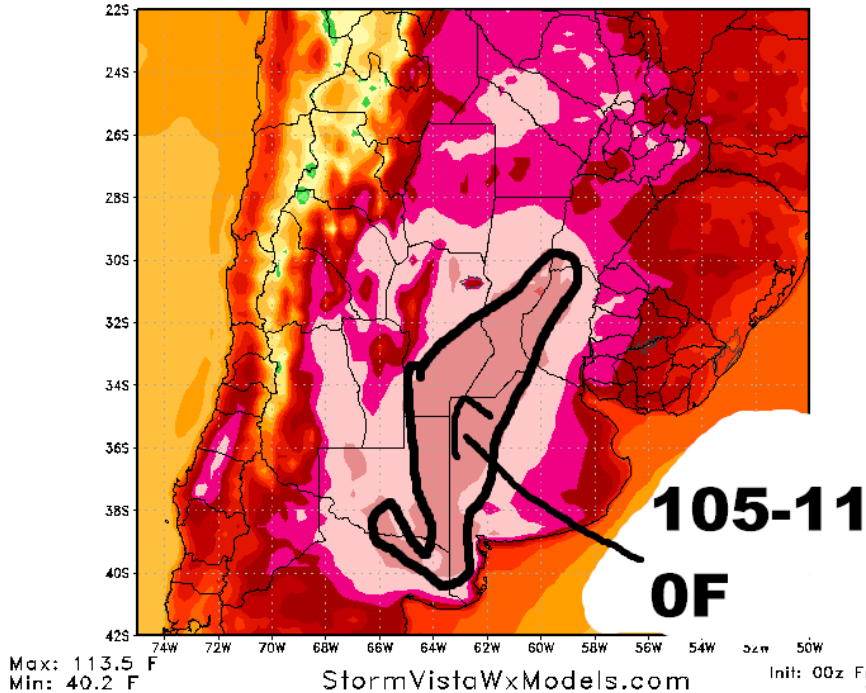
StormVistaWxModels.com

Init: 00z Fri 02 Feb 2018  
2018-02-02-06:20

2 m Max Temperature (F)  
Valid: 00z Sun 04 Feb 2018

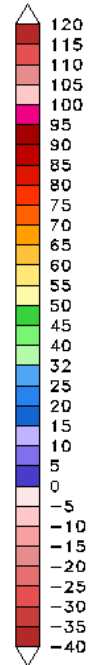
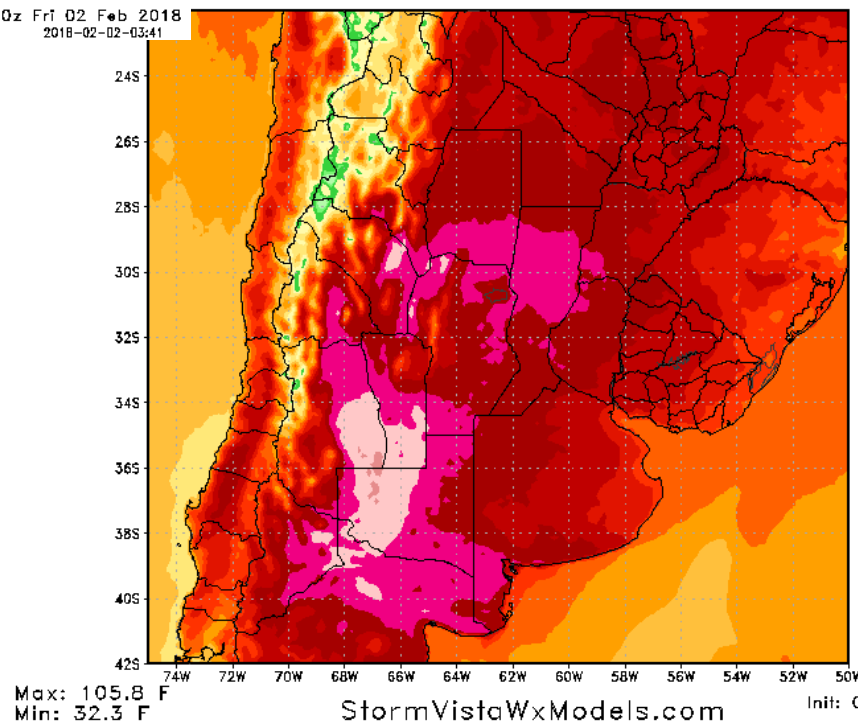
GFS-MAXRES  
Hour: 48

# MAX TEMPS FEB 3



Temperature (F)  
Sun 04 Feb 2018

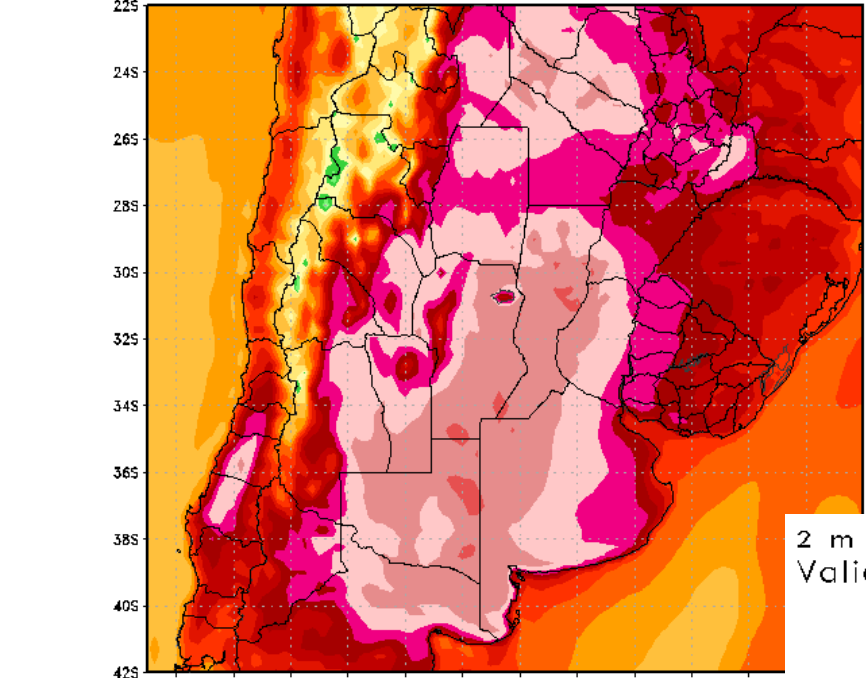
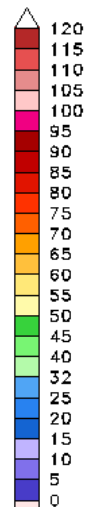
ECMWF-MAXRES  
Hour: 48



2 m Max Temperature (F)  
Valid: 00z Mon 05 Feb 2018

GFS-MAXRES  
Hour: 72

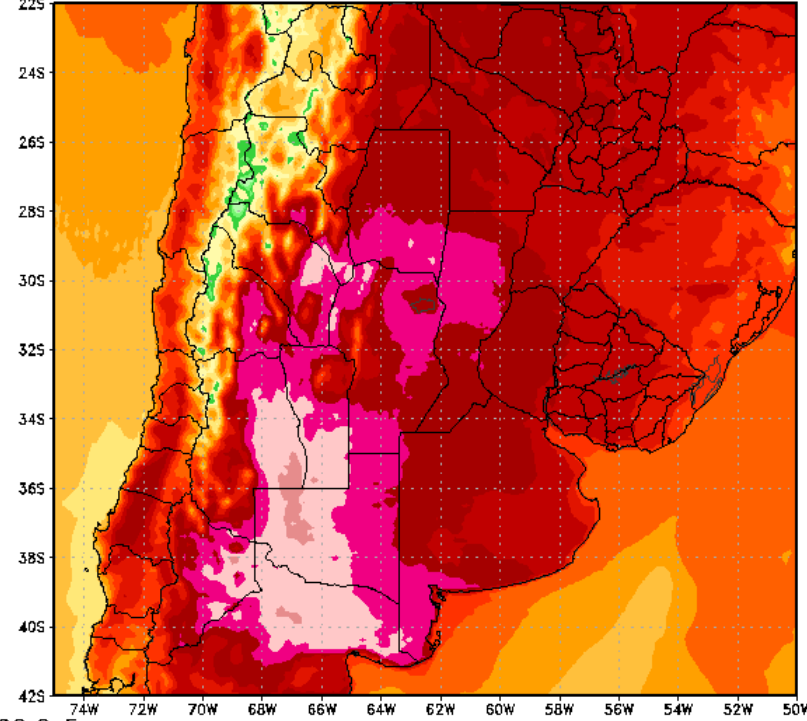
# MAX TEMPS FEB 4



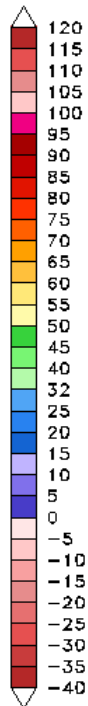
Max: 113.6 F  
Min: 39.5 F  
StormVistaWxModels.com

2 m Max Temperature (F)  
Valid: 00z Mon 05 Feb 2018

ECMWF-MAXRES  
Hour: 72



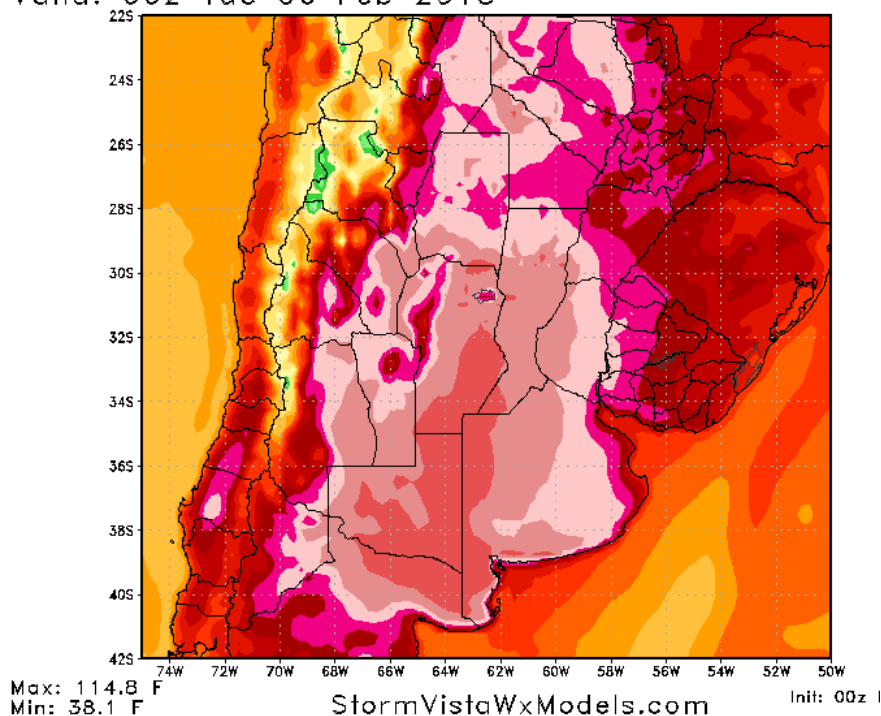
Max: 106.6 F  
Min: 32.1 F  
StormVistaWxModels.com



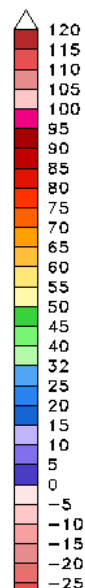
Init: 00z Fri 02 Feb 2018  
2018-02-02-05:06



2 m Max Temperature (F)  
Valid: 00z Tue 06 Feb 2018



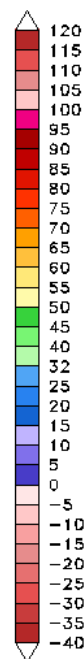
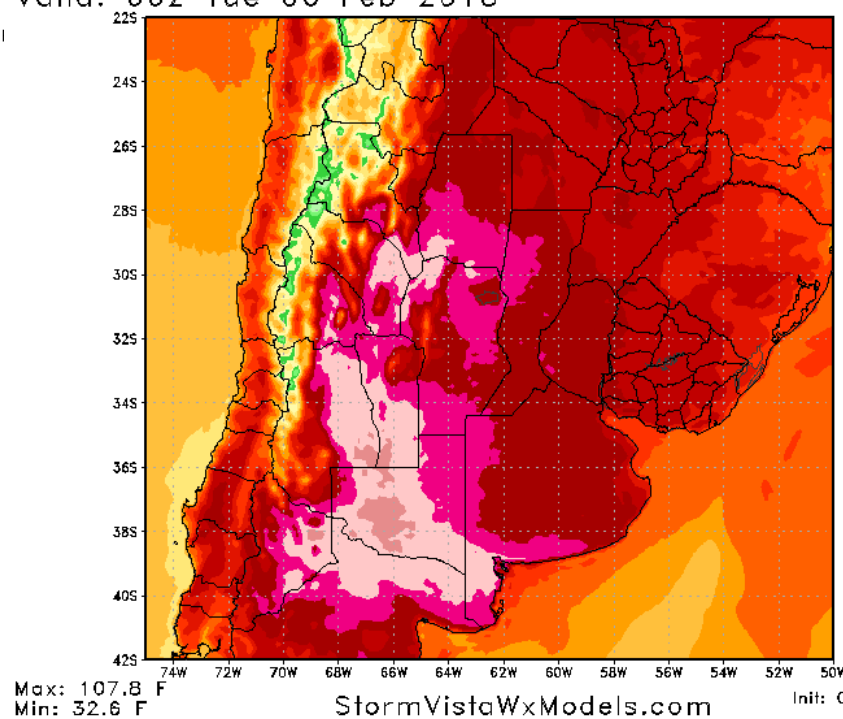
GFS-MAXRES  
Hour: 96



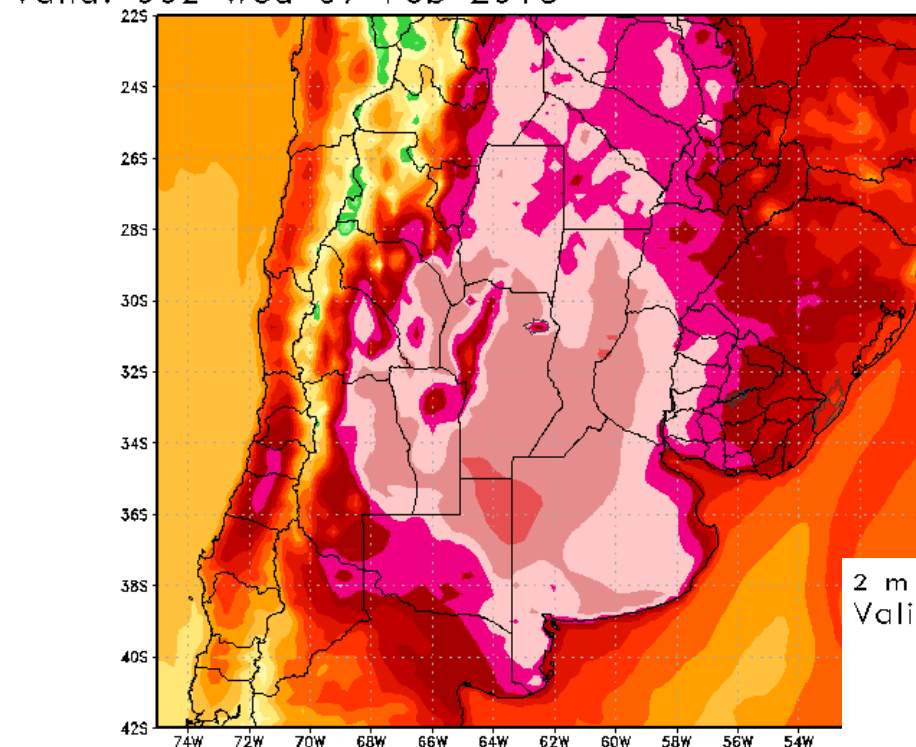
# MAX TEMPS FEB 5

2 m Max Temperature (F)  
Valid: 00z Tue 06 Feb 2018

ECMWF-MAXRES  
Hour: 96



2 m Max Temperature (F)  
Valid: 00z Wed 07 Feb 2018



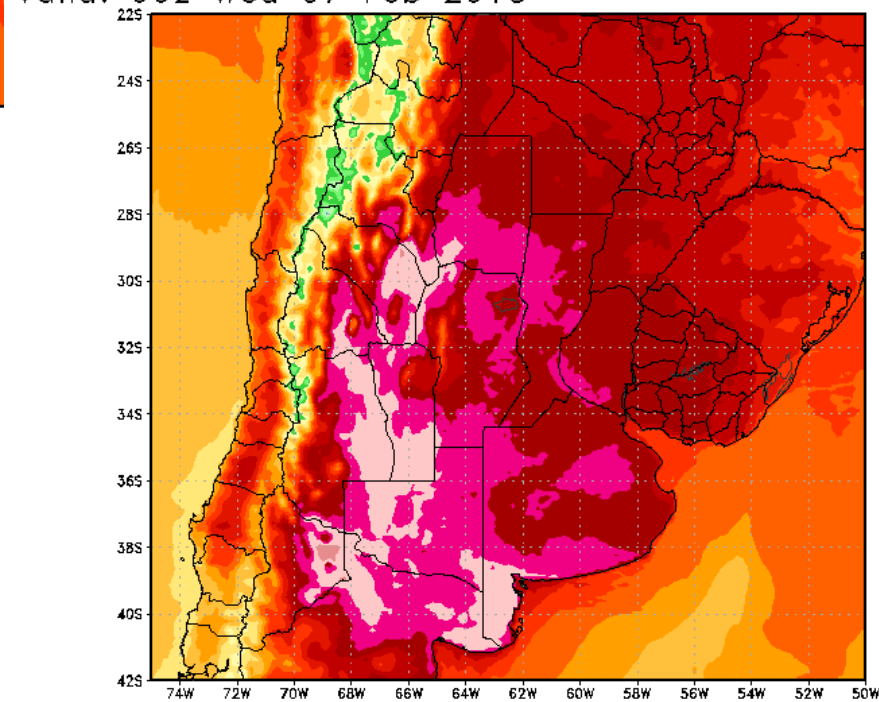
Max: 112.0 F  
Min: 37.3 F

StormVistaWxModels.com

GFS-MAXRES  
Hour: 120

# MAX TEMPS FEB 6

2 m Max Temperature (F)  
Valid: 00z Wed 07 Feb 2018



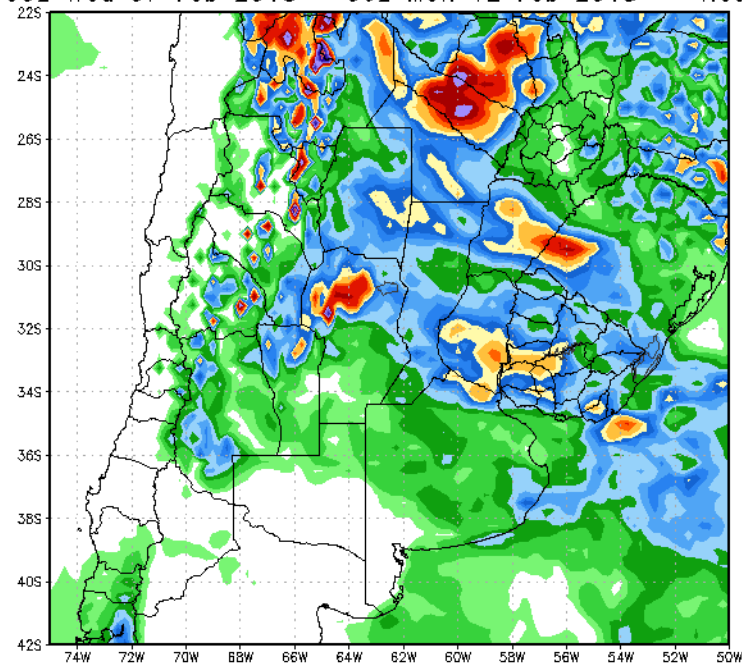
Max: 109.7 F  
Min: 31.9 F

StormVistaWxModels.com

ECMWF-MAXRES  
Hour: 120

Init: 00z Fri 02 Feb 2018  
2018-02-02-06:20

120 Hour Total Precipitation (in) GFS-MAXRES  
Valid: 00z Wed 07 Feb 2018 - 00z Mon 12 Feb 2018 Hour: 120 - 240



Max: 11.2 in  
Min: 0.0 in

StormVistaWxModels.com

Init: 00z Fri 201

# 6-10DAY RAINS

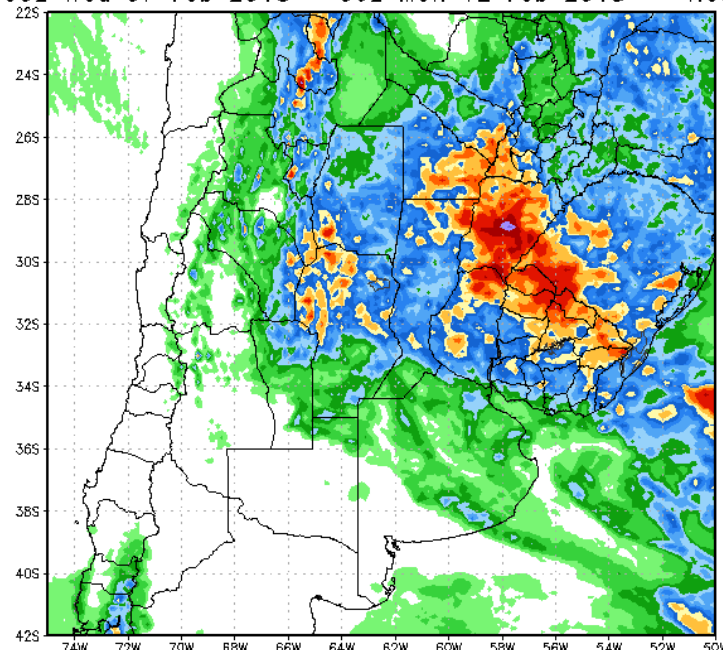
**Most of Buenos Aires La Pampa southern Cordoba stays dry**

120 Hour Total Precipitation (in)

Valid: 00z Wed 07 Feb 2018 - 00z Mon 12 Feb 2018

ECMWF-MAXRES

Hour: 120 - 240

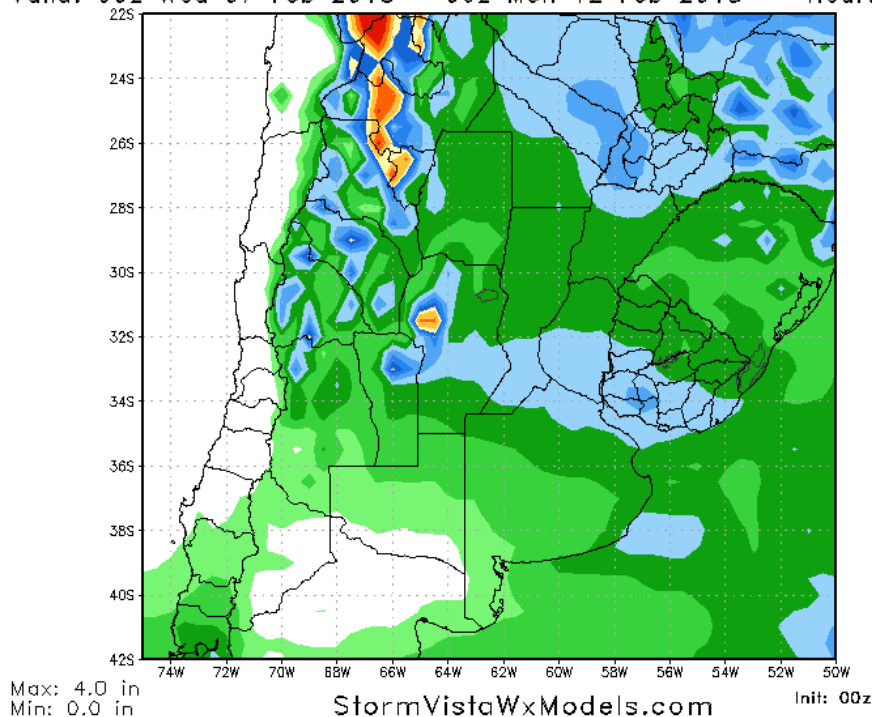


Max: 6.1 in  
Min: -0.0 in

StormVistaWxModels.com

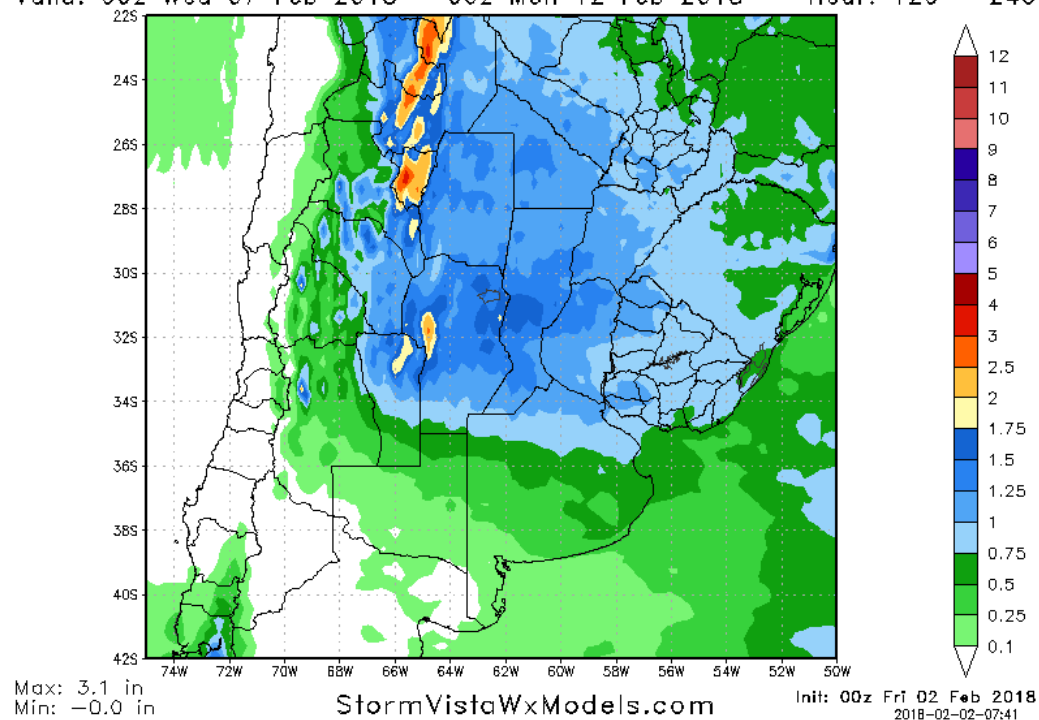
Init: 00z Fri 02 Feb 2018  
2018-02-02-06:55

120 Hour Total Precipitation (in) GFS-ENS-MAXRES  
 Valid: 00z Wed 07 Feb 2018 - 00z Mon 12 Feb 2018 Hour: 120 - 240



# 6-10DAY Ensembles

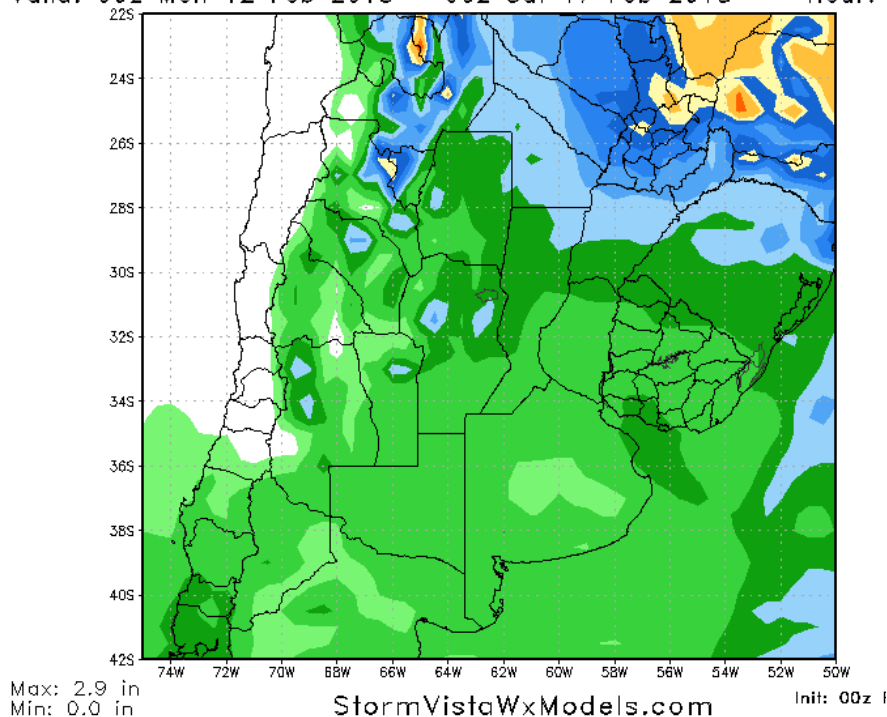
120 Hour Total Precipitation (in) ECMWF-EPS-MAXRES  
 Valid: 00z Wed 07 Feb 2018 - 00z Mon 12 Feb 2018 Hour: 120 - 240



**EURO ensemble  
 wetter than GFS  
 ensembles**

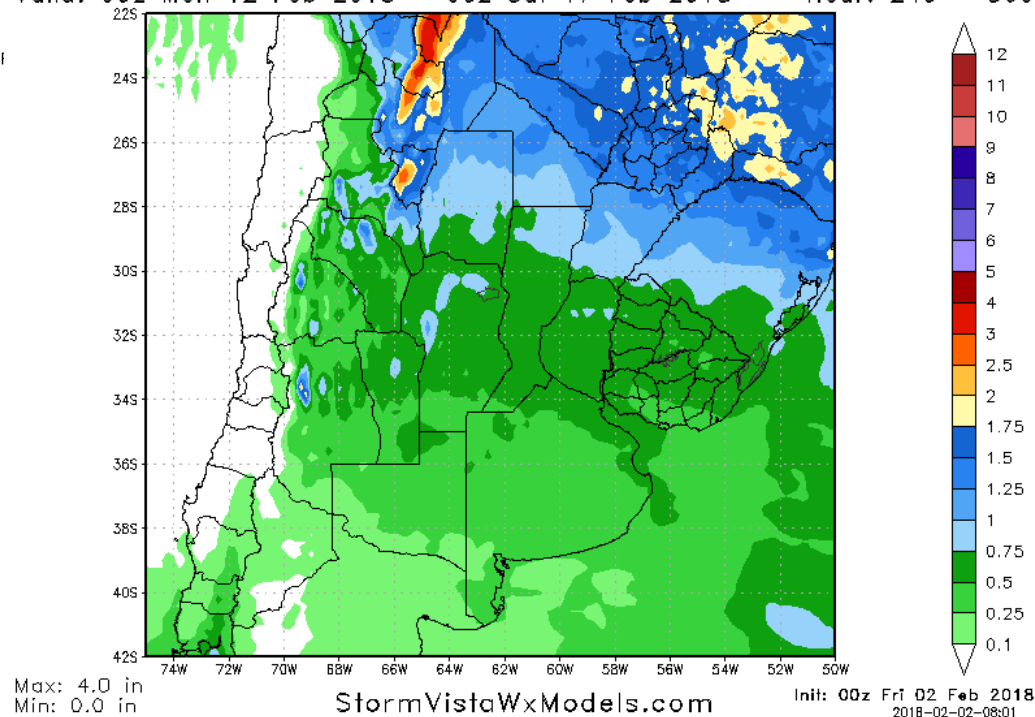


120 Hour Total Precipitation (in) GFS-ENS-MAXRES  
Valid: 00z Mon 12 Feb 2018 - 00z Sat 17 Feb 2018 Hour: 240 - 360



# 11-15 DAY Ensembles

120 Hour Total Precipitation (in) ECMWF-EPS-MAXRES  
Valid: 00z Mon 12 Feb 2018 - 00z Sat 17 Feb 2018 Hour: 240 - 360

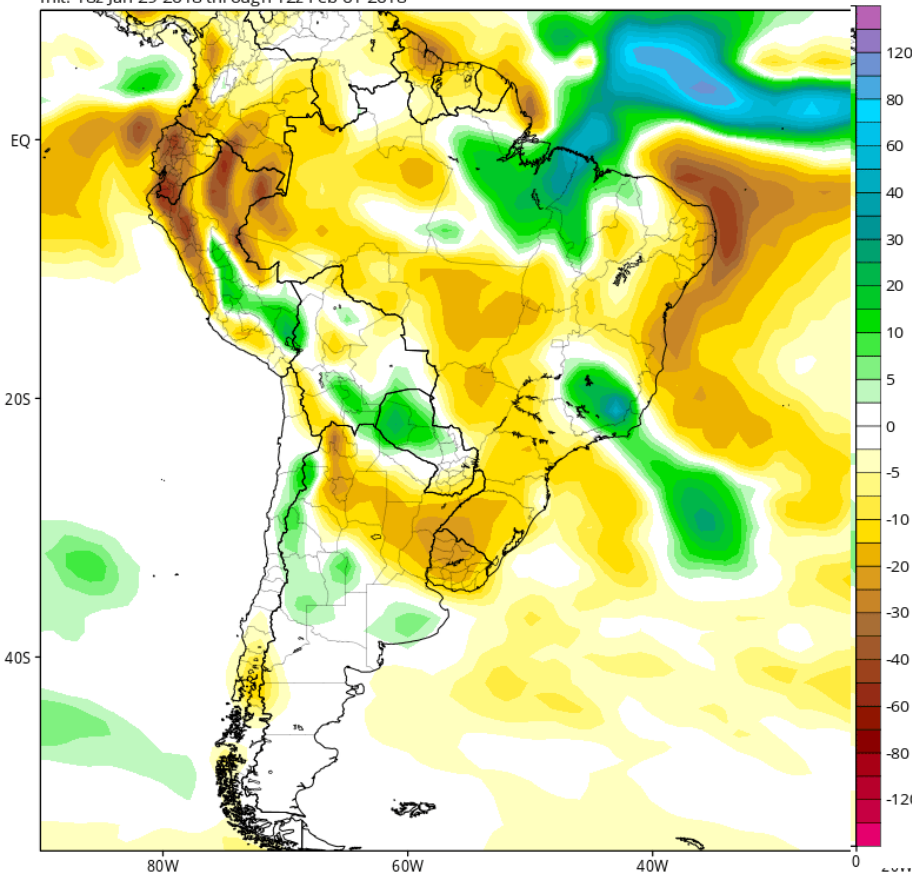


**Rains shift north into northern ARG.. Central eastern south central ARG not 100% dry but nothing over 0.75"/20mm**

CFSv2 Accumulated Precip. Anomaly (mm) from 12z08Feb2018 to 12z15Feb2018 (Days 8-14)

Average of last 48 forecasts (12 runs x 4 members)

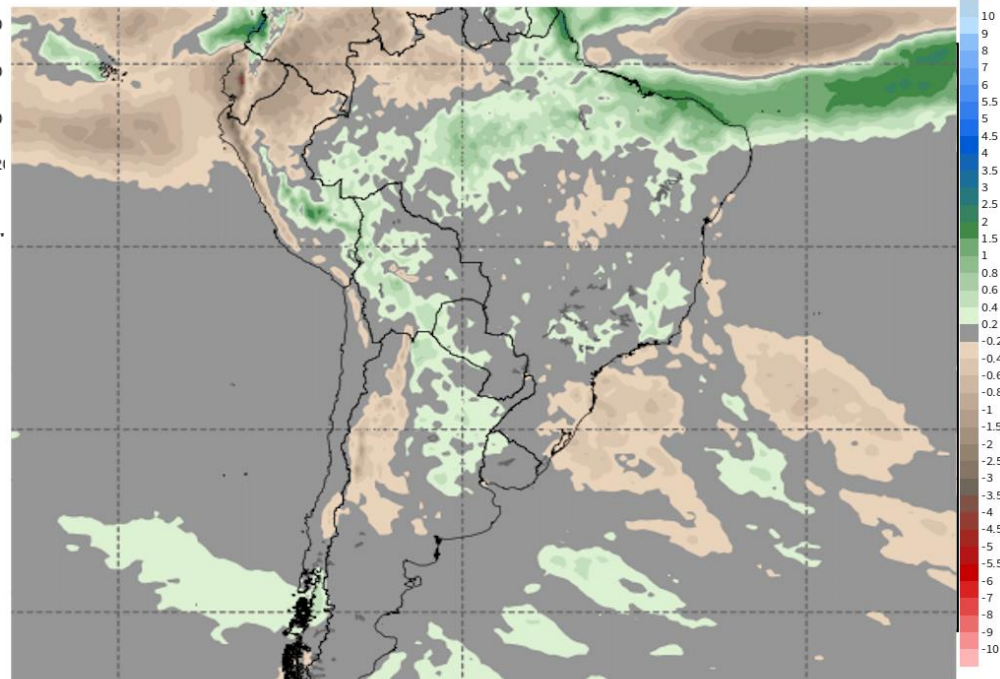
Init: 18z Jan 29 2018 through 12z Feb 01 2018



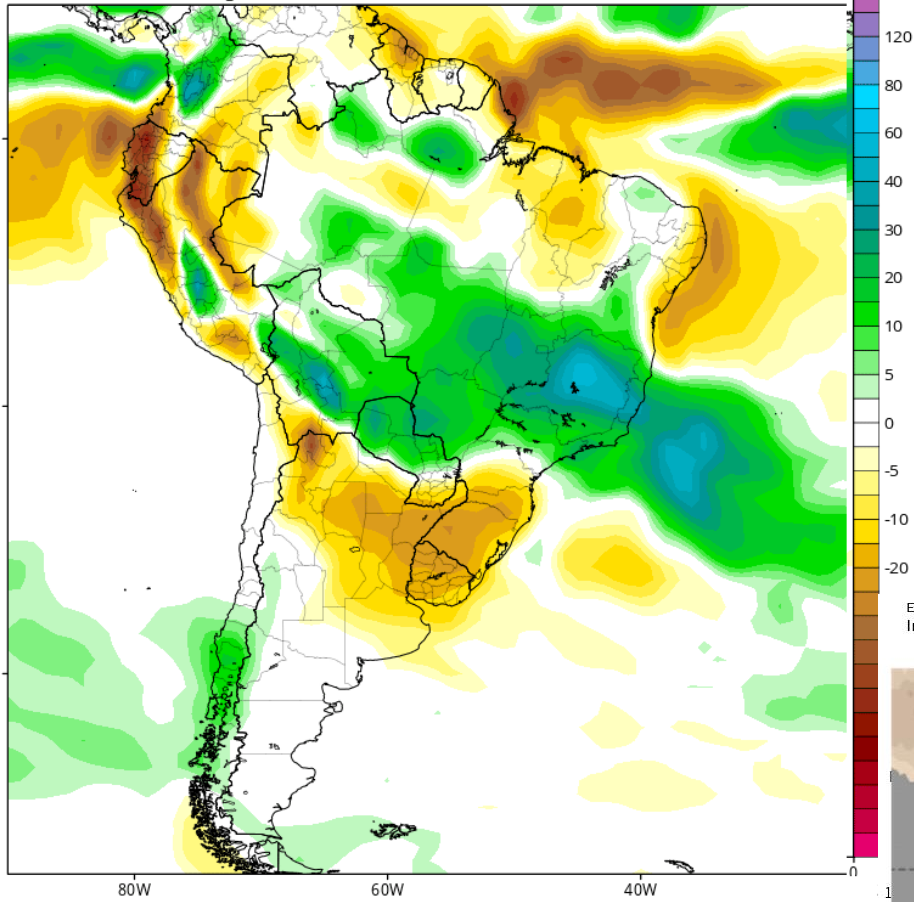
# WEEK 2 RAINFALL ANOMALIES

ECMWF M-EPS Precipitation Anomaly [inch] | 7-day Ensemble Mean 00Z08FEB2018 & 00Z15FEB2018  
Init: 00Z01FEB2018 -- [336] hr --> Valid Thu 00Z15FEB2018

Day 7 - Day 14  
MIN|MAX: -5.68 | 4.98 INCH



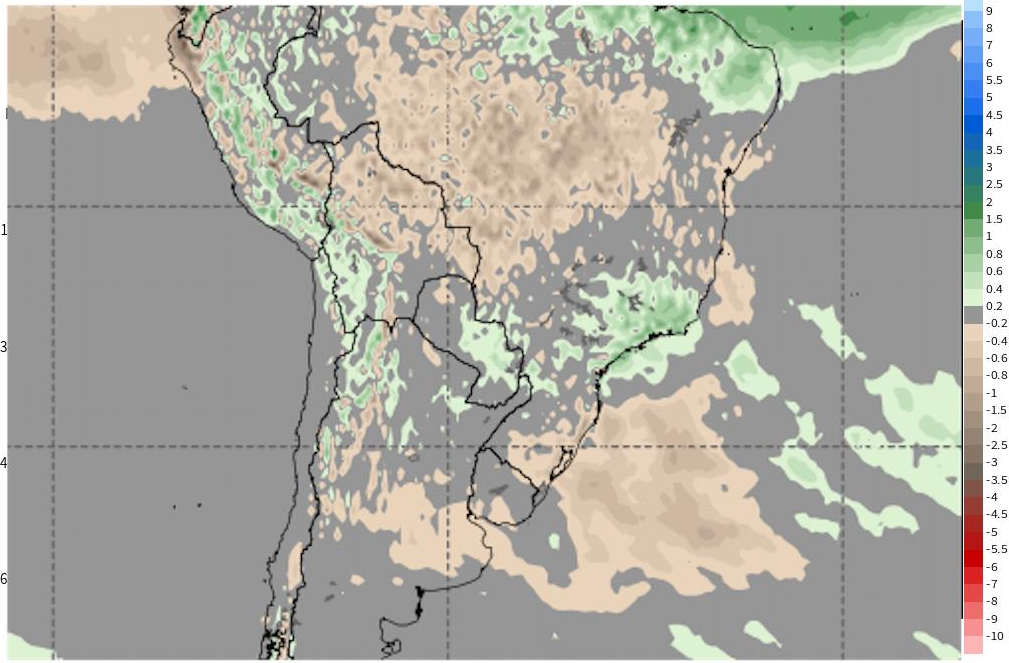
CFSv2 Accumulated Precip. Anomaly (mm) from 12z15Feb2018 to 12z22Feb2018 (Days 15-21)  
Average of last 48 forecasts (12 runs x 4 members)  
Init: 18z Jan 29 2018 through 12z Feb 01 2018



# WEEK 3 RAINFALL ANOMALIES

ECMWF M-EPS Precipitation Anomaly [inch] | 7-day Ensemble Mean 00Z15FEB2018 & 00Z22FEB2018  
Init: 00Z01FEB2018 -- [504] hr --> Valid Thu 00Z22FEB2018

Day 14 - Day 21  
MIN|MAX: -10.92 | 4.07 INCH

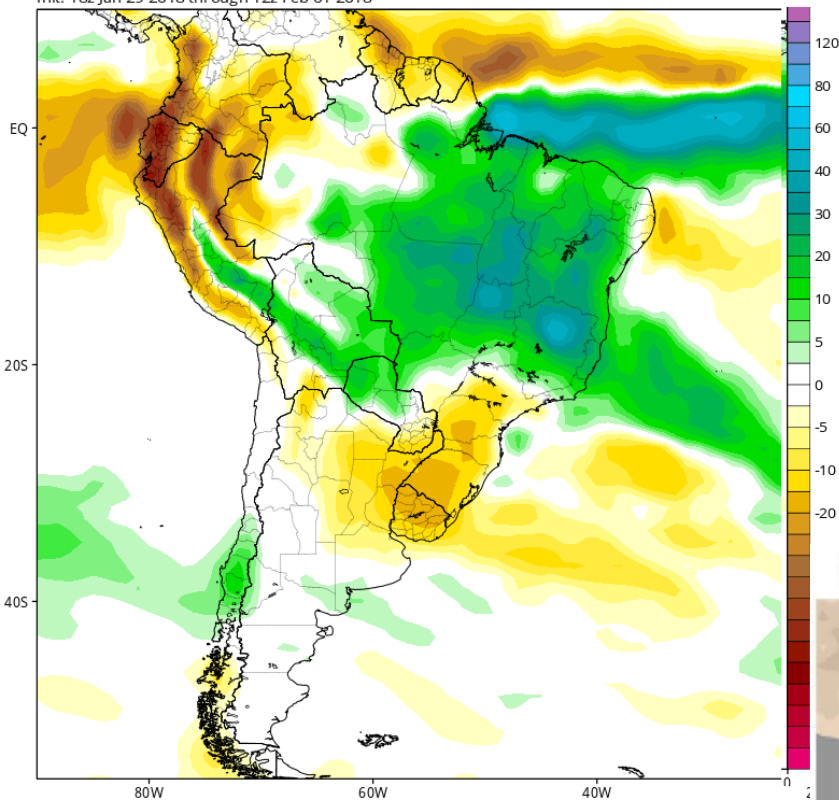




CFSv2 Accumulated Precip. Anomaly (mm) from 12z22Feb2018 to 12z01Mar2018 (Days 22-28)

Average of last 48 forecasts (12 runs x 4 members)

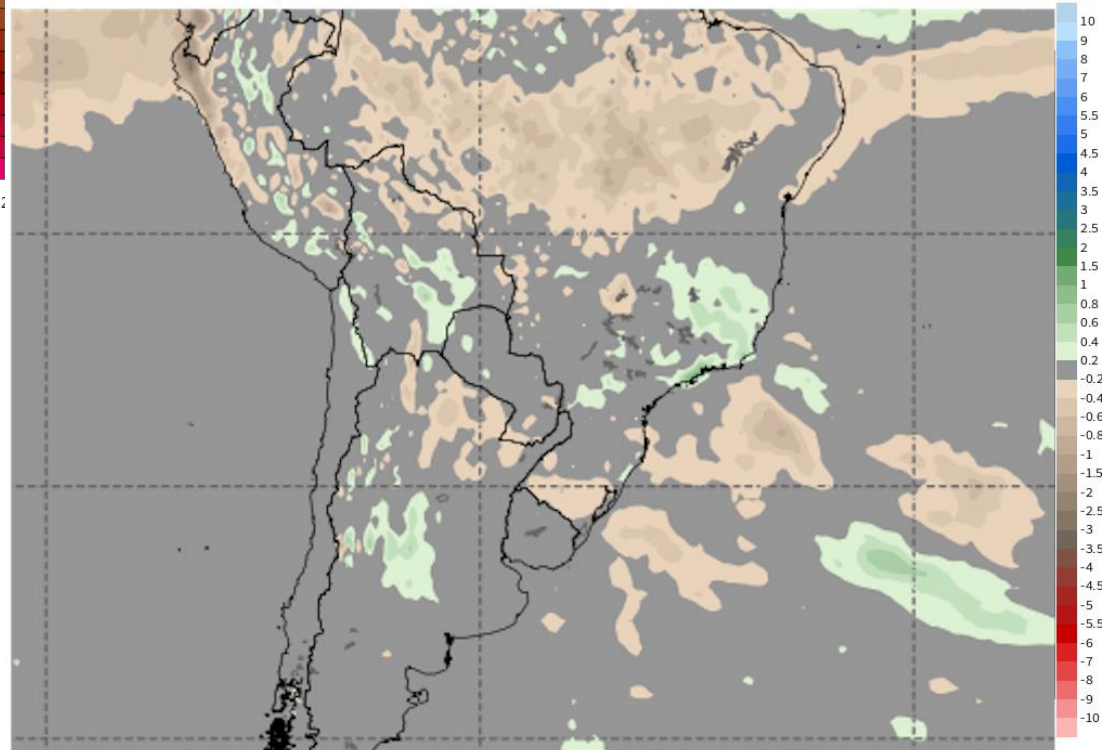
Init: 18z Jan 29 2018 through 12z Feb 01 2018



# WEEK 4 RAINFALL ANOMALIES

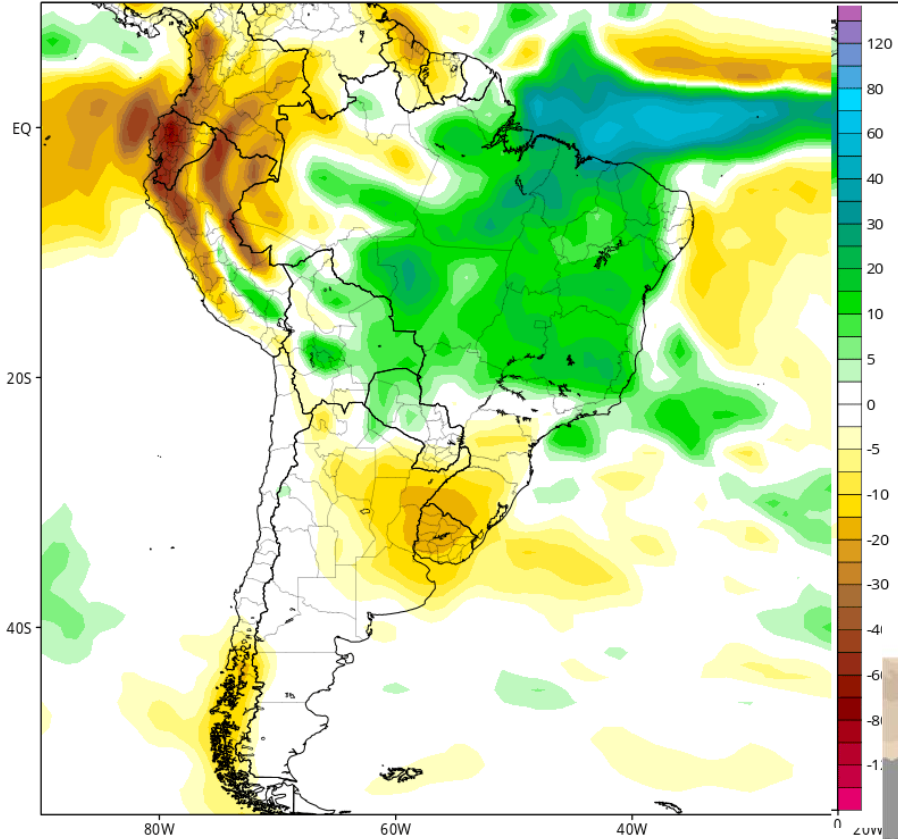
ECMWF M-EPS Precipitation Anomaly [inch] | 7-day Ensemble Mean 00Z22FEB2018 & 00Z01MAR2018  
Init: 00Z01FEB2018 -- [672] hr --> Valid Thu 00Z01MAR2018

Day 21 - Day 28  
MIN|MAX: -2.88 | 1.71 INCH





CFSv2 Accumulated Precip. Anomaly (mm) from 12z01Mar2018 to 12z08Mar2018 (Days 29-35)  
Average of last 48 forecasts (12 runs x 4 members)  
Init: 18z Jan 29 2018 through 12z Feb 01 2018



# WEEK 5 RAINFALL ANOMALIES

ECMWF M-EPS Precipitation Anomaly [inch] | 7-day Ensemble Mean 00Z01MAR2018 & 00Z08MAR2018  
Init: 00Z01FEB2018 -- [840] hr --> Valid Thu 00Z08MAR2018

Day 28 - Day 35  
MIN|MAX: -2.58 | 2.50 INCH

