

SOUTH AMERICA GRAIN WEATHER

2/25/18 OVERVIEW

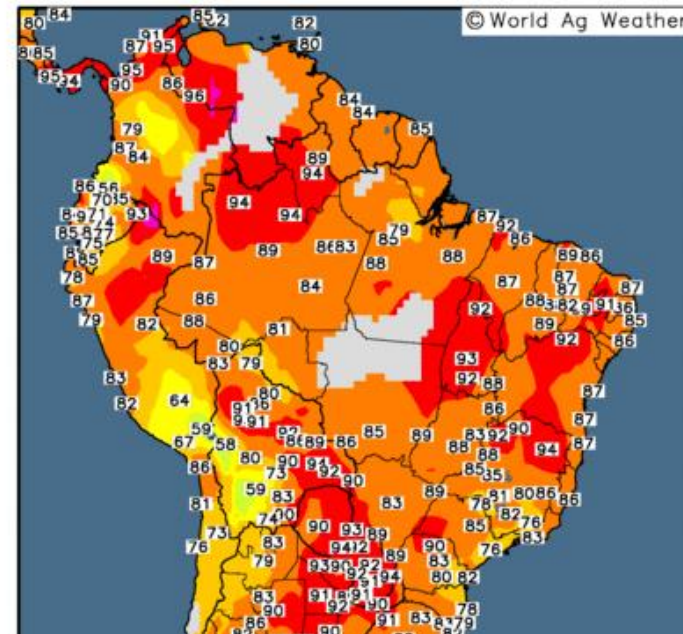
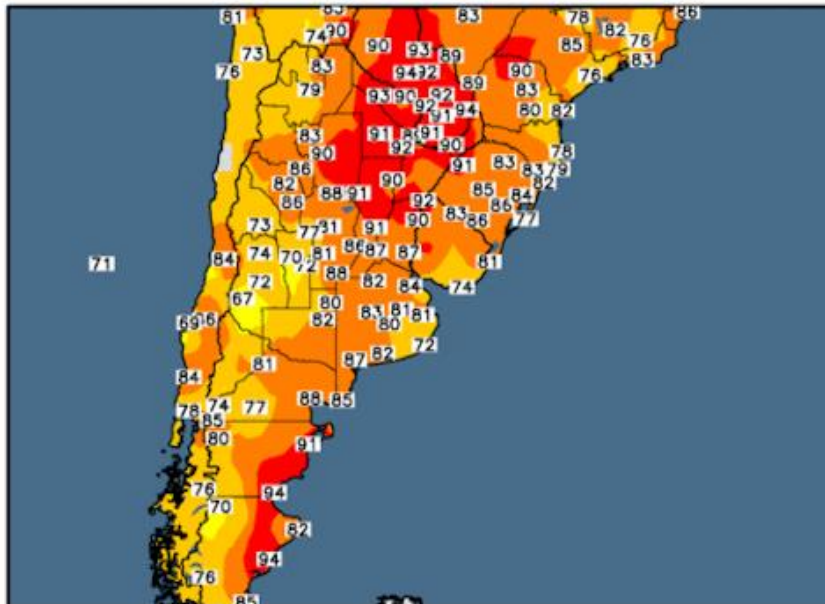
SUMMARY

The Sunday afternoon satellite picture shows numerous showers and thunderstorms over much of southwestern and central Brazil but skies are clear and dry over most of Argentina. The 12z Sunday operational GFS model in the 6-10 day came out with something substantially different than what was showing early Sunday morning. The 12z operational GFS has a large area of significant rain covering all of La Pampa San Luis western Buenos Aires and Southern Cordoba. However if you look at the maps down below you will see that this is a significant change from what the previous run of the GFS model was showing. Moreover... that solution does not have any support from the GFS ensemble or the operational European and the European ensemble. So I am re skeptical about the idea of significant rains over these areas in the 6-10d. The rest of the model data is in pretty good agreement with regard to Brazil and Argentina both in the 6-10 day and 11-15 day.

S.AMERICAN MAX TEMPS FEB 24

Max temperatures in Argentina on Saturday showed seasonally warm temps over northern Argentina into Paraguay with readings 91-95f/ 32-35c. Rest of Argentina saw seasonal temps as did most of Brazil.

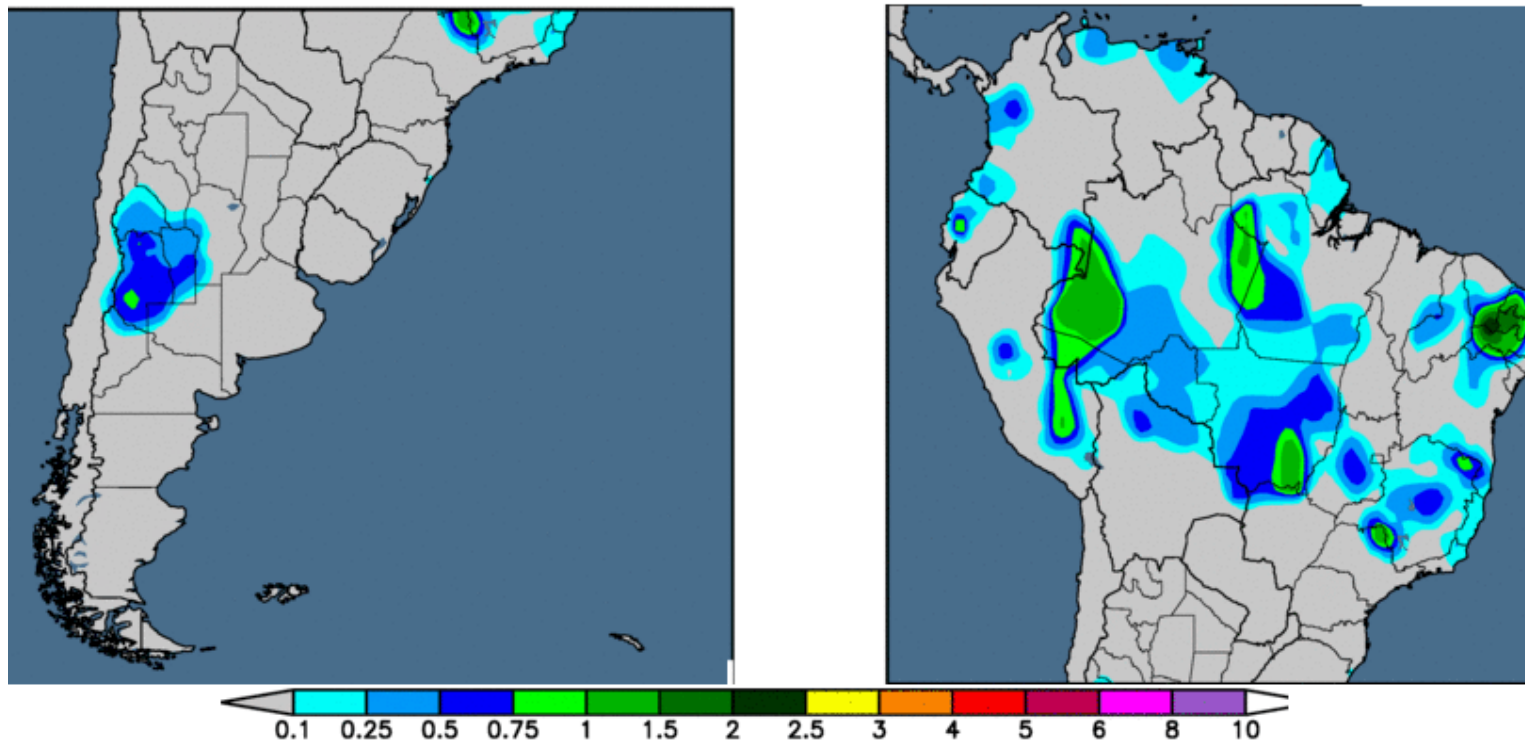
Observed Maximum Temperature (°F) 24 Feb 2018 Observed Maximum Temperature (°F) 24 Feb 2018



S.AMERICA RAINFALL FEB 23-24

Rainfall from Saturday Feb 23 to Sunday Feb 24 ending 0700 est/ 12z ... showed all of central eastern of northern Argentina was 100% dry. Light rains of 3-12mm/ 0.15-0.50" fell over San Luis . In Brazil all of southwest and southeast areas were dry with only Light to moderate rains of 0.50-1.5"/12-38mm over 50% eastern Minas Gerais central Goias and Minas Gerais . I.

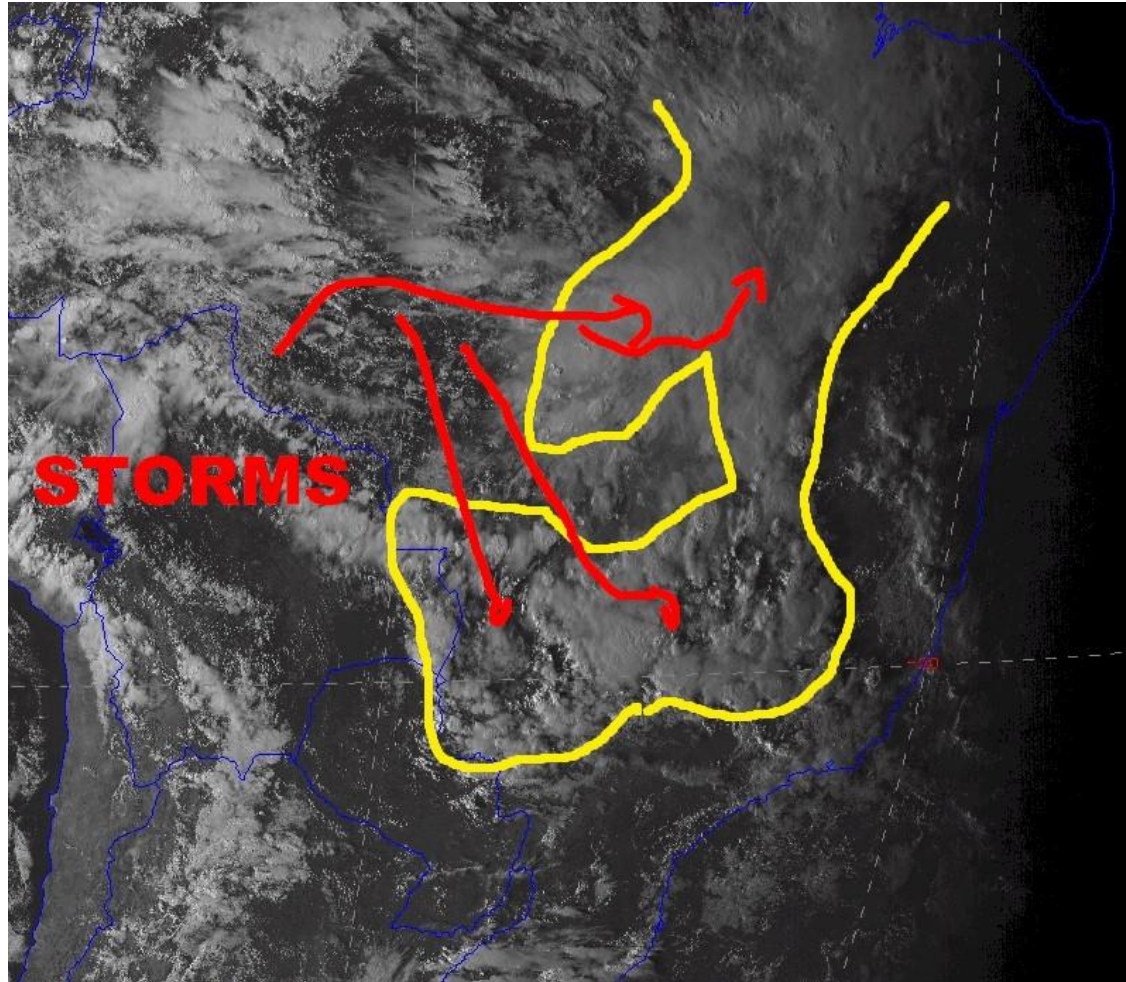
24-hour Precipitation Analysis Observed precipitation (inches) through 12 UTC 24 Feb 2018



S.AMERICA RAINFALL FEB 24-25 ENDING 1200 UTC

EVENING SATELLITE FEB 25

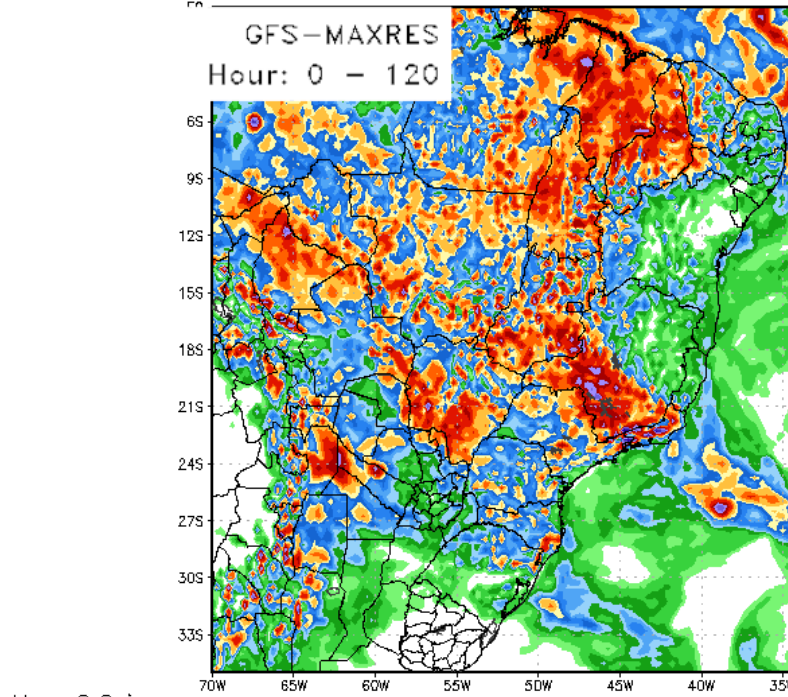
Sunday LATE afternoon satellite pictures NUMEROUS storms over central Brazil into the northwest third of Sao Paulo into all of MGDS ... while southeast Brazil and Bahian in northeast brazil and eastern Minas Gerais was clear. In ARG all areas saw mostly clear skies.



1-5 DAY RAINFALL

Models in Good agreement over ARG. Over Brazil 'SHAPE' or position of rain shield is close But GFS has much heavier rains southern Minas Geris all of Goias Tocatins & Mato Grosso (2-5"/ 50-125mm 70% coverage). Euro drier overall of those areas with 1-3"/25-75mm rains southern Minas Gerais Sao Paulo far south Goias & MGDS

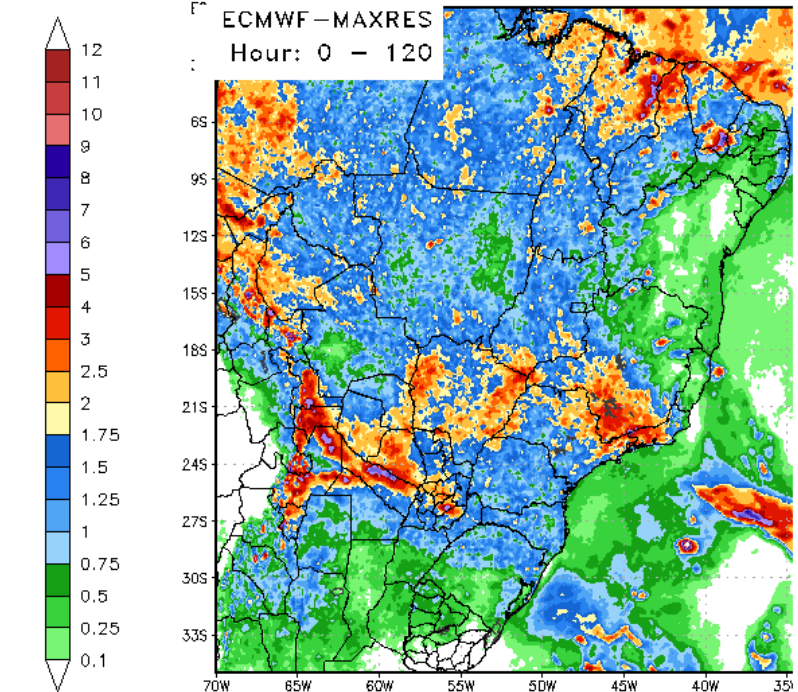
120 Hour Total Precipitation (in)
Valid: 12z Sun 25 Feb 2018 - 12z Fri 02 Mar 2018



Max: 9.6 in
Min: 0.0 in

StormVistaWxModels.com

120 Hour Total Precipitation (in)
Valid: 12z Sun 25 Feb 2018 - 12z Fri 02 Mar 2018



Max: 15.5 in
Min: 0.0 in

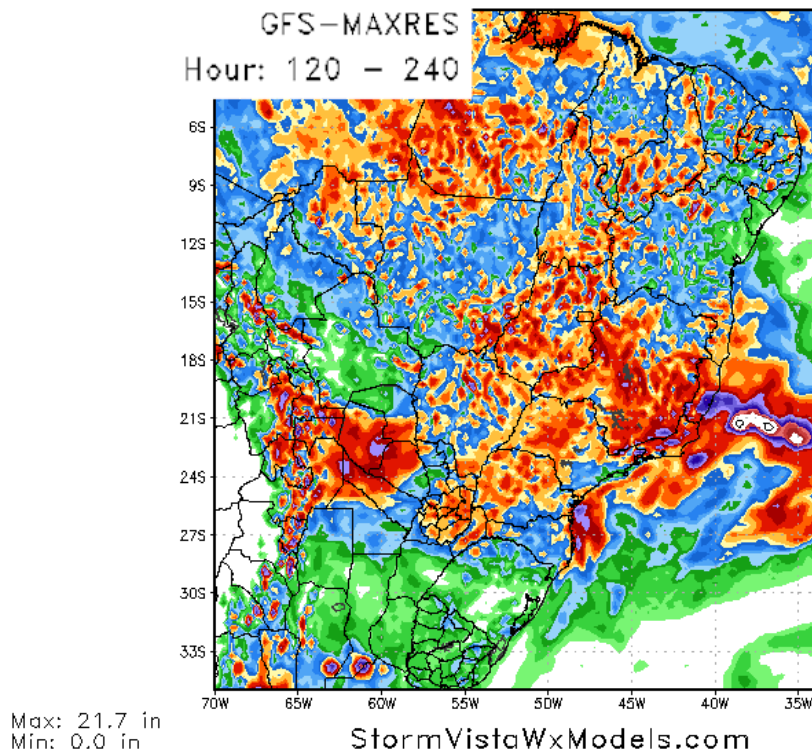
StormVistaWxModels.com

6-10 DAY RAINFALL

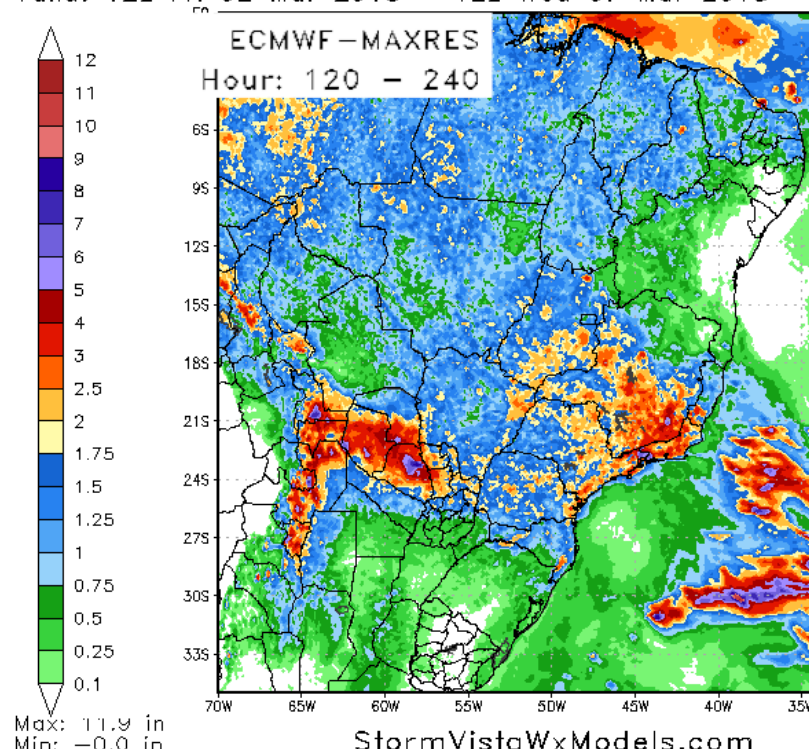
Again there is not much difference between the models in the 6-10 day. Notice again that the 11 to 15 day from late last week ... which is now the 6-10Day... was once again far too wet. The seasonal trend continues to show that moderate or significant rains in the 11-15day and / or 6-10D... always underperform. The models consistently shift towards a DRIER solutions as we get closer to the event or the dates

Models NOT in Good agreement over ARG. 12z SUNDAY GFS is much wetter from early Sunday over La Pampa sw Cordoba western Buenos Aires. 12z Operational EURO has weak showers over se Santa Fe Entre Rios Nw Buenos Aires. In BRAZIL again GFS is MUCH wetter when compared to ECMWF -- especially over MGDS Tocatis Goias Sao Paulo & Parana

120 Hour Total Precipitation (in)
Valid: 12z Fri 02 Mar 2018 - 12z Wed 07 Mar 2018



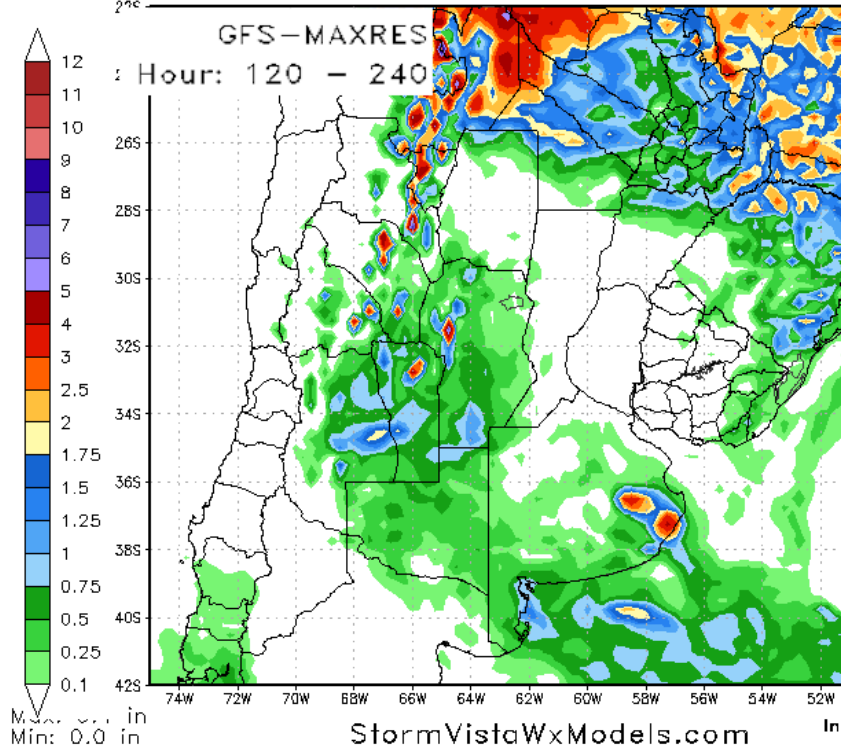
120 Hour Total Precipitation (in)
Valid: 12z Fri 02 Mar 2018 - 12z Wed 07 Mar 2018



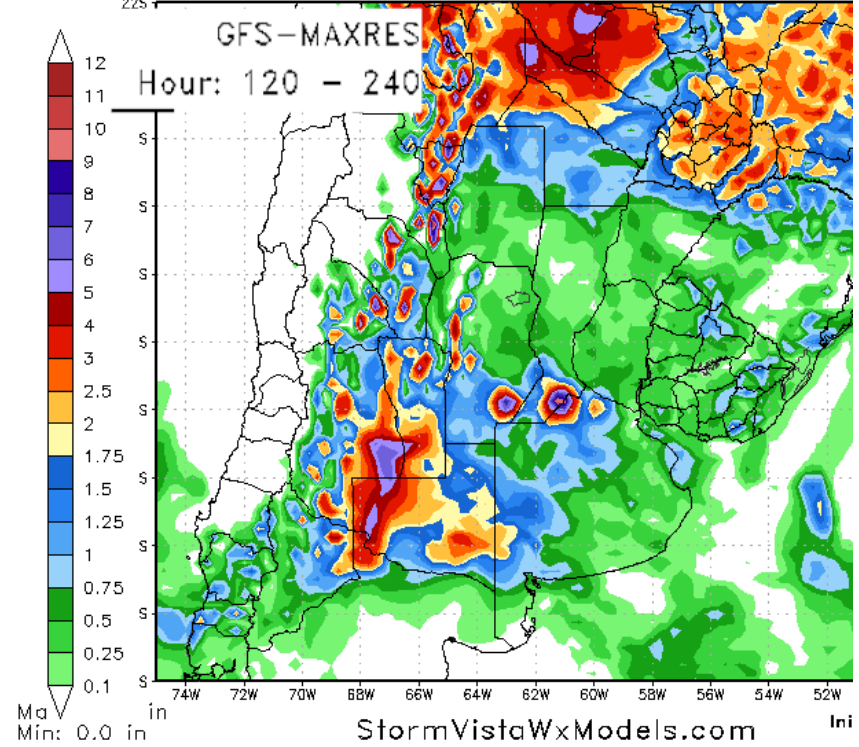
6-10 DAY ARGENTINA RAINFALL

12z Operational GFS is WET with 1-5"/25-125mm over 75% of LaPampa San Luis south 1/3 Cordoba & western 1/3/ Buenos Aires. This may be BS. WHY? 1) if you compare that to the 0z Sunday Op- GFS you see it is MUCH drier.. so this 12z Sunday GFS is Huge change -- and probably NOT correct uth Goias & MGDS. 2)seasonal trend last 3 months of ARG all models have been too wet in 6-10d/ 11-15d

120 Hour Total Precipitation (in)
Valid: 00z Fri 02 Mar 2018 - 00z Wed 07 Mar 2018



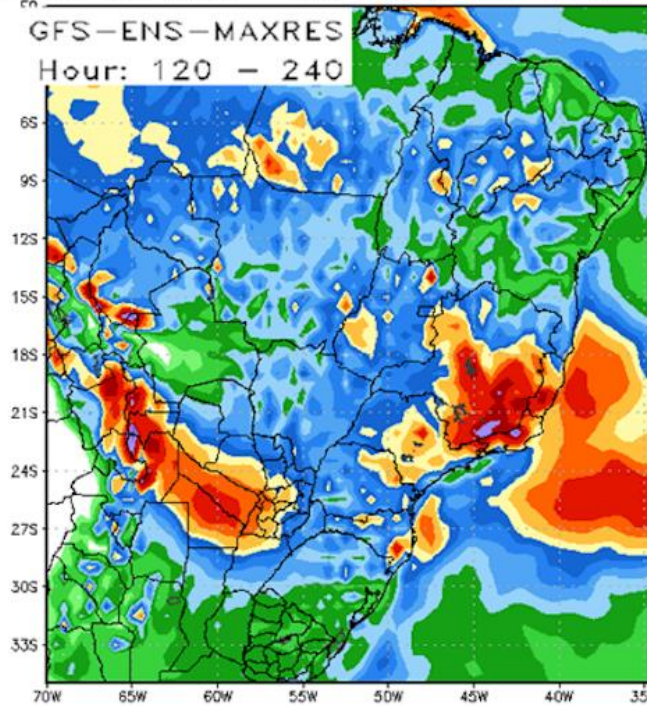
120 Hour Total Precipitation (in)
Valid: 12z Fri 02 Mar 2018 - 12z Wed 07 Mar 2018



6-10 DAY ENSEMBLES

Notice European ensemble does NOT have those Rains of Cordoba La Pampa & western Buenos Aires. Most of ARG is not 100% dry but nothing significant. Good Model agreement over most of Brazil with best rains over Minas Gerais & Sao Paulo of San Luis Cordoba western Buenos Aires

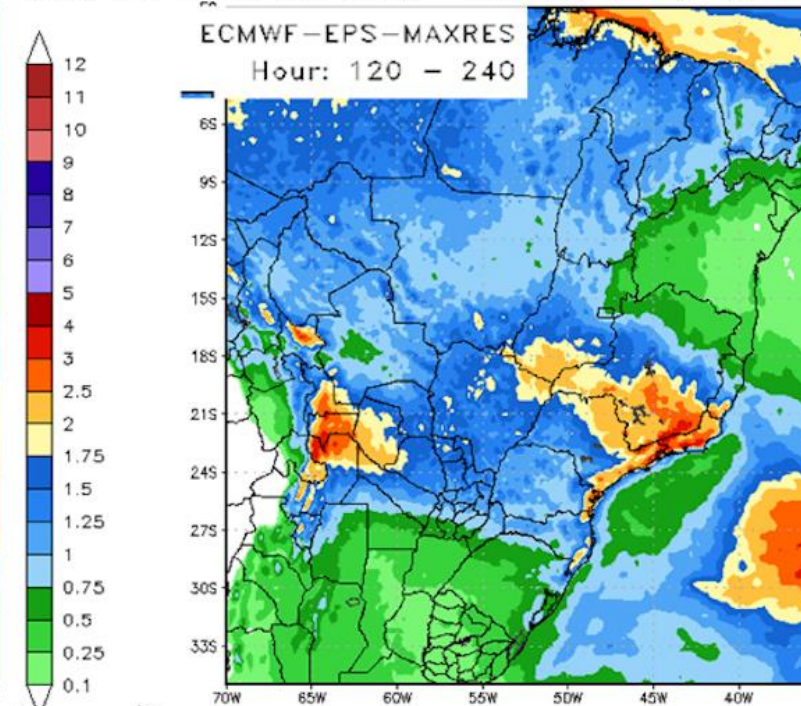
120 Hour Total Precipitation (in)
Valid: 12z Fri 02 Mar 2018 - 12z Wed 07 Mar 2018



Max: 7.5 in
Min: 0.0 in

StormVistaWxModels.com

120 Hour Total Precipitation (in)
Valid: 12z Fri 02 Mar 2018 - 12z Wed 07 Mar 2018



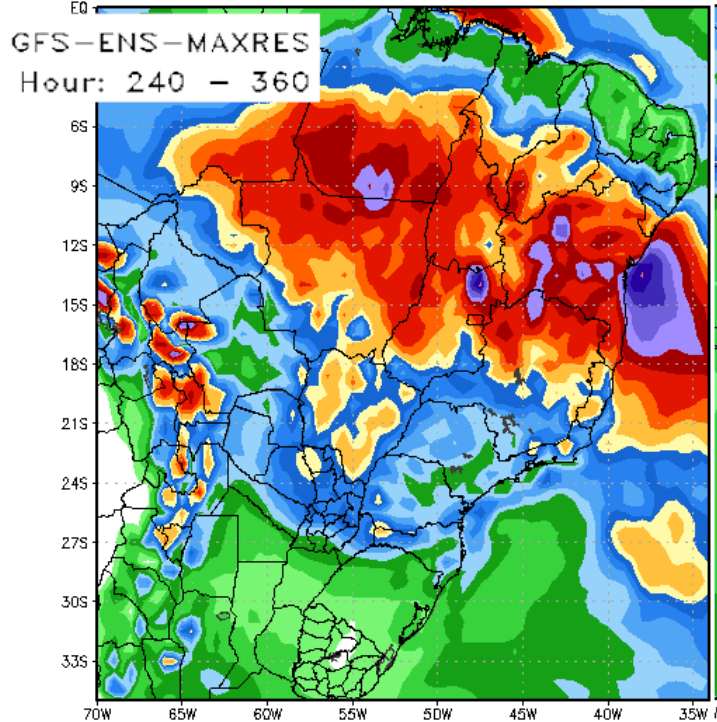
Max: 7.5 in
Min: -0.0 in

StormVistaWxModels.com

11-15 DAY ENSEMBLES

12z GFS ensemble AND Euro ensemble shift good Rains North -- but again as is typically the case GFS ensemble is MUCH wetter than the Euro ensemble. EURO has 0.50-1.5"/ 12-38mm 60% coverage over Cordoba San Luis western Cordoba & western Buenso Aires.

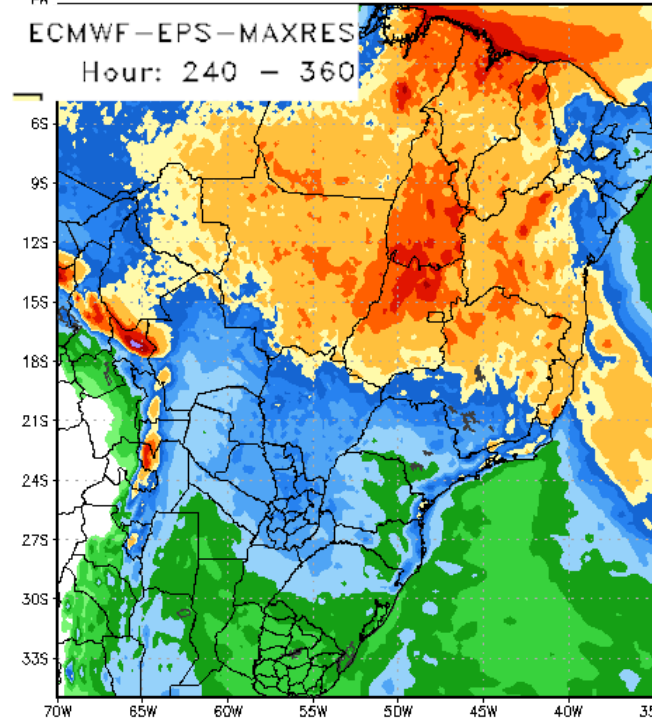
120 Hour Total Precipitation (in)
Valid: 12z Wed 07 Mar 2018 - 12z Mon 12 Mar 2018



Max: 9.2 in
Min: 0.0 in

StormVistaWxModels.com

120 Hour Total Precipitation (in)
Valid: 12z Wed 07 Mar 2018 - 12z Mon 12 Mar 2018



Max: 5.5 in
Min: -0.0 in

StormVistaWxModels.com

DT wxrisk.com OFFICE 804 715 8330 CELL 804 307 8070