

**US HRWW / S.AMERICA  
GRAIN WEATHER  
ISSUES**

**as of FRIDAY  
9 FEBRUARY 2018**



LOCATED in Richmond VA

Featured frequently on AGRI-MONEY

**EMAIL WXRISK@VERZION .NET**



@WXRISK.COM



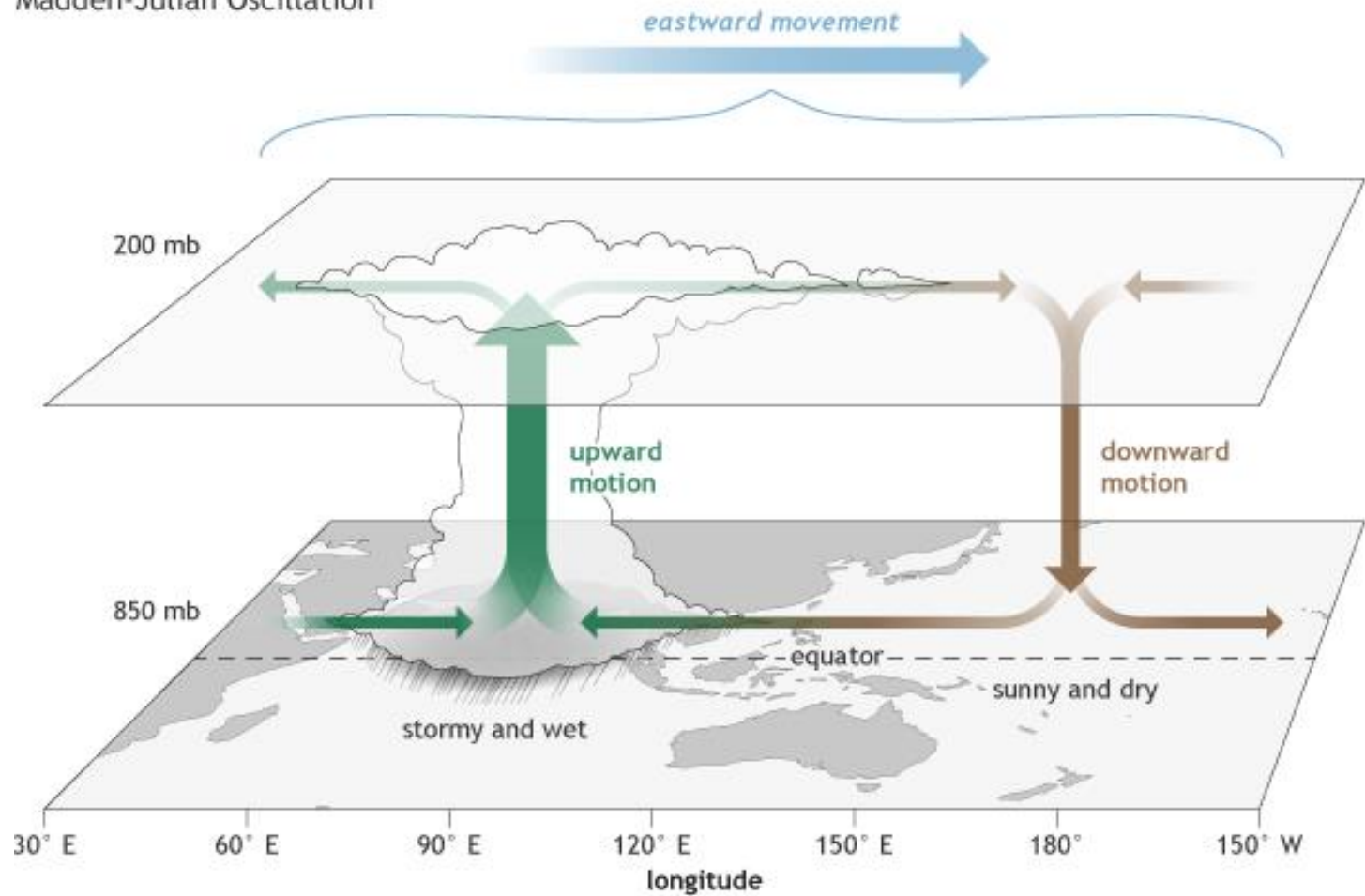
<https://www.facebook.com/WxRisk>

[wxrisk@gmail.com](mailto:wxrisk@gmail.com)

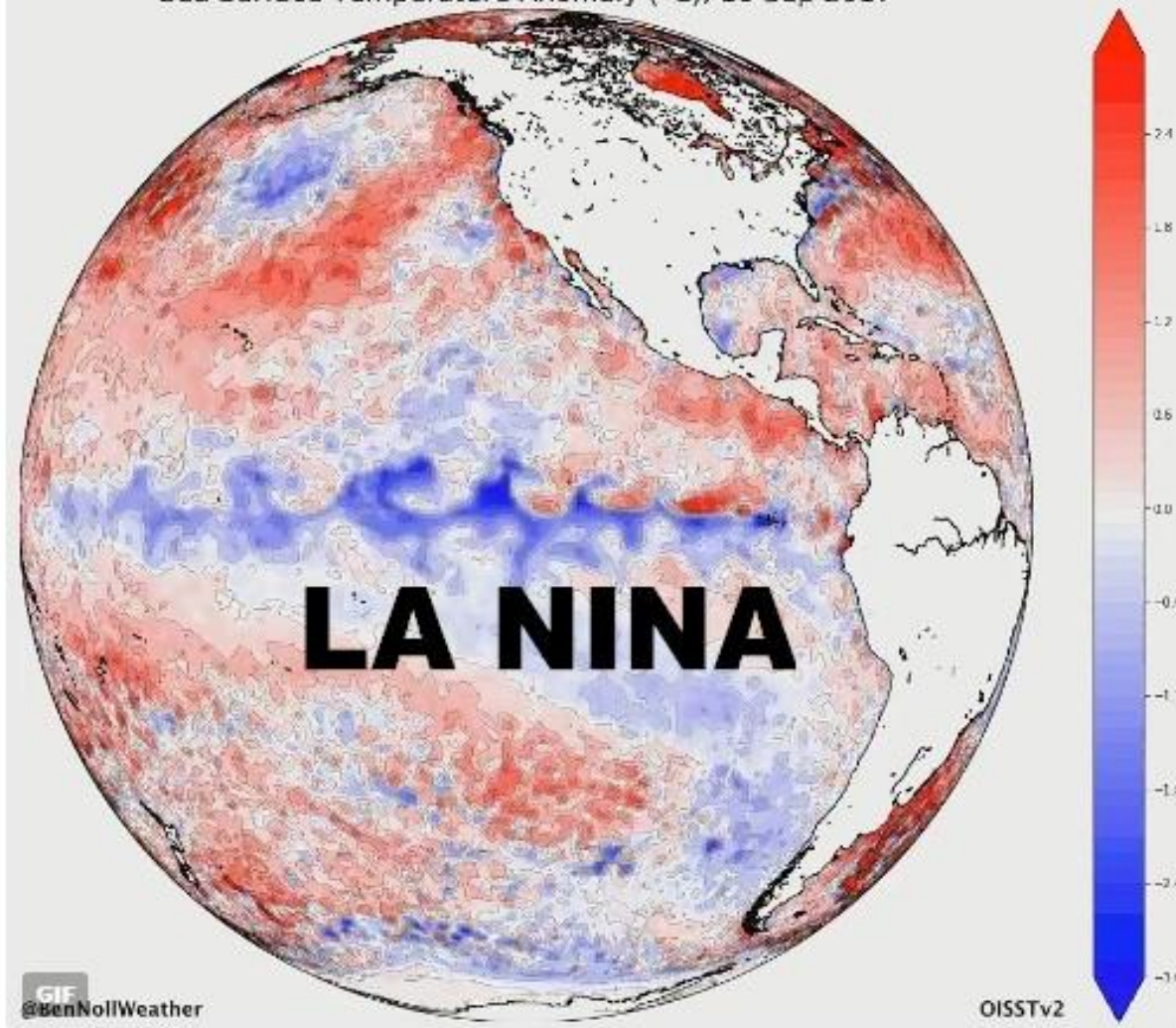


# LETS TALK MJO/ENSO

Madden-Julian Oscillation

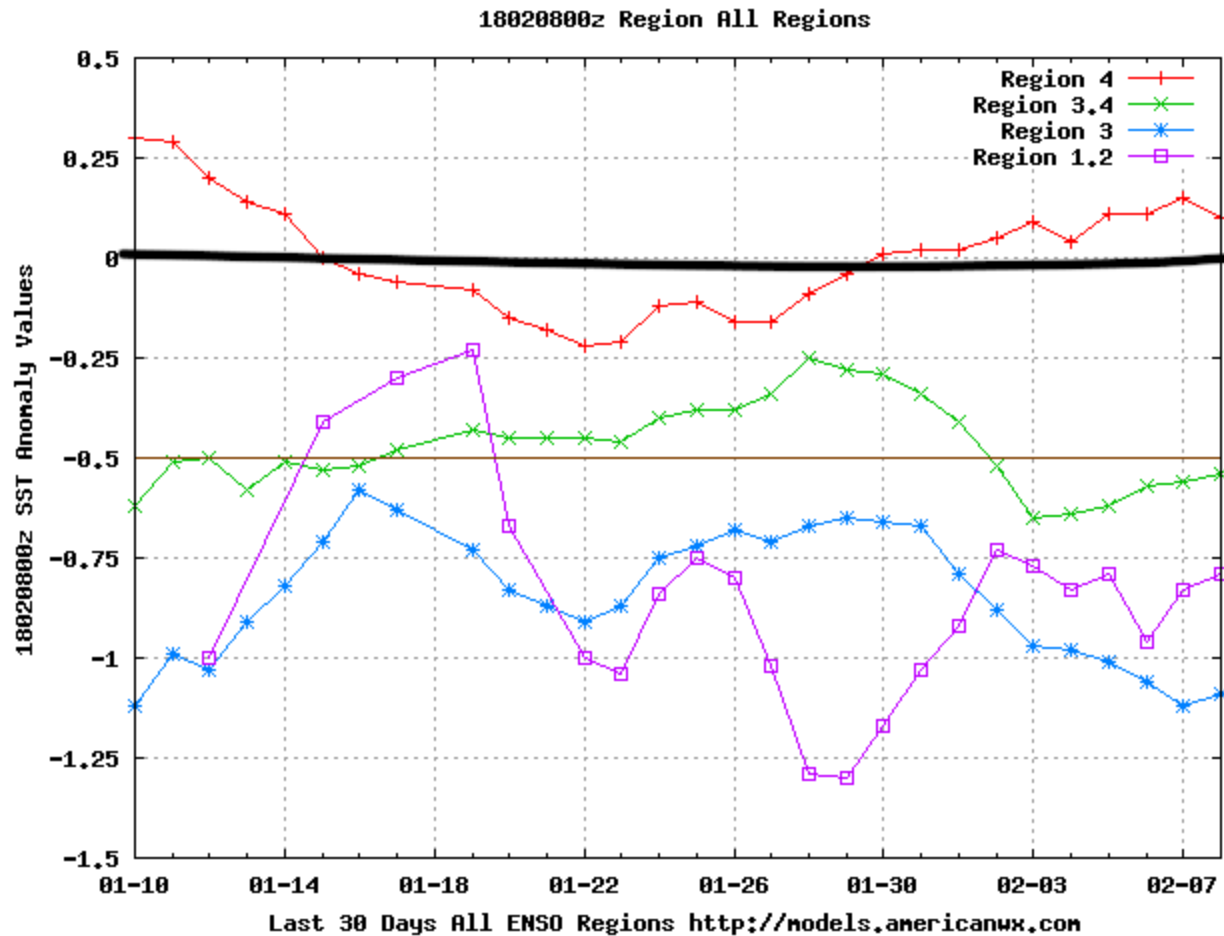


Sea Surface Temperature Anomaly (°C), 10 Sep 2017



6:29 AM - 13 Sep 2017

# ACTUAL SEA SURFACE TEMP ANOMALIES – of all 4 regions.. **LA NINA NOW HOLDING**



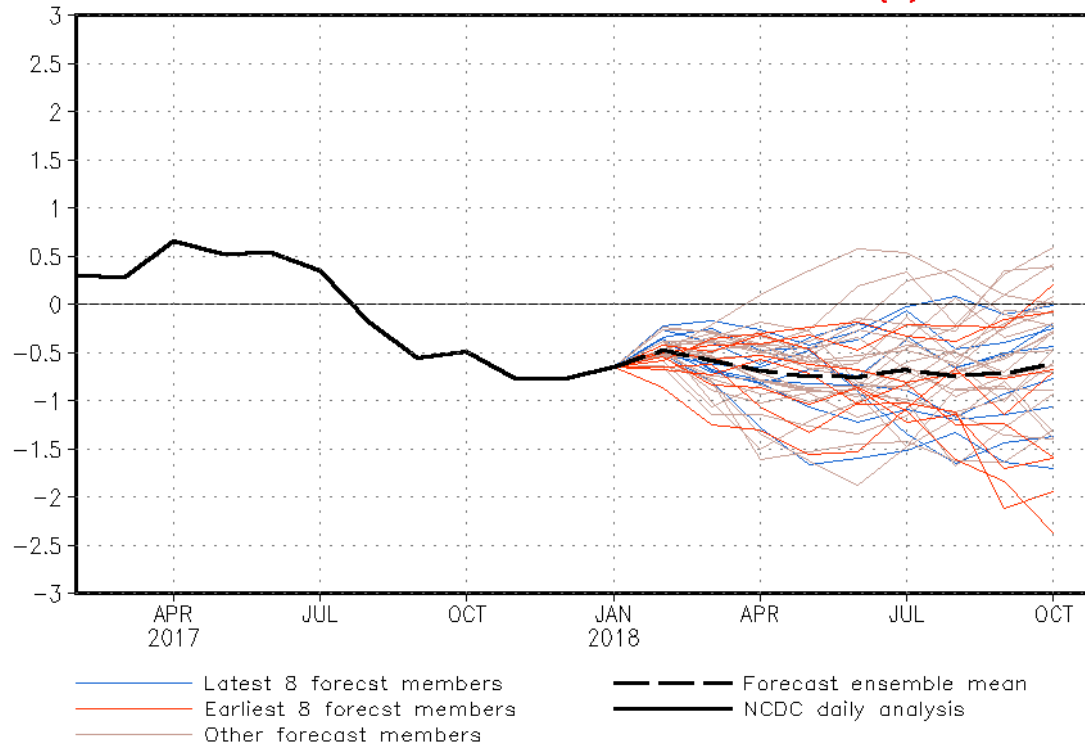
# LATEST CFS MODEL PROJECTION = \*\* La Nina NEVER reaches threshold for MODERATE but stays weak into MAY / JUNE... Prolonging dry pattern into at least part of SPRING 2018



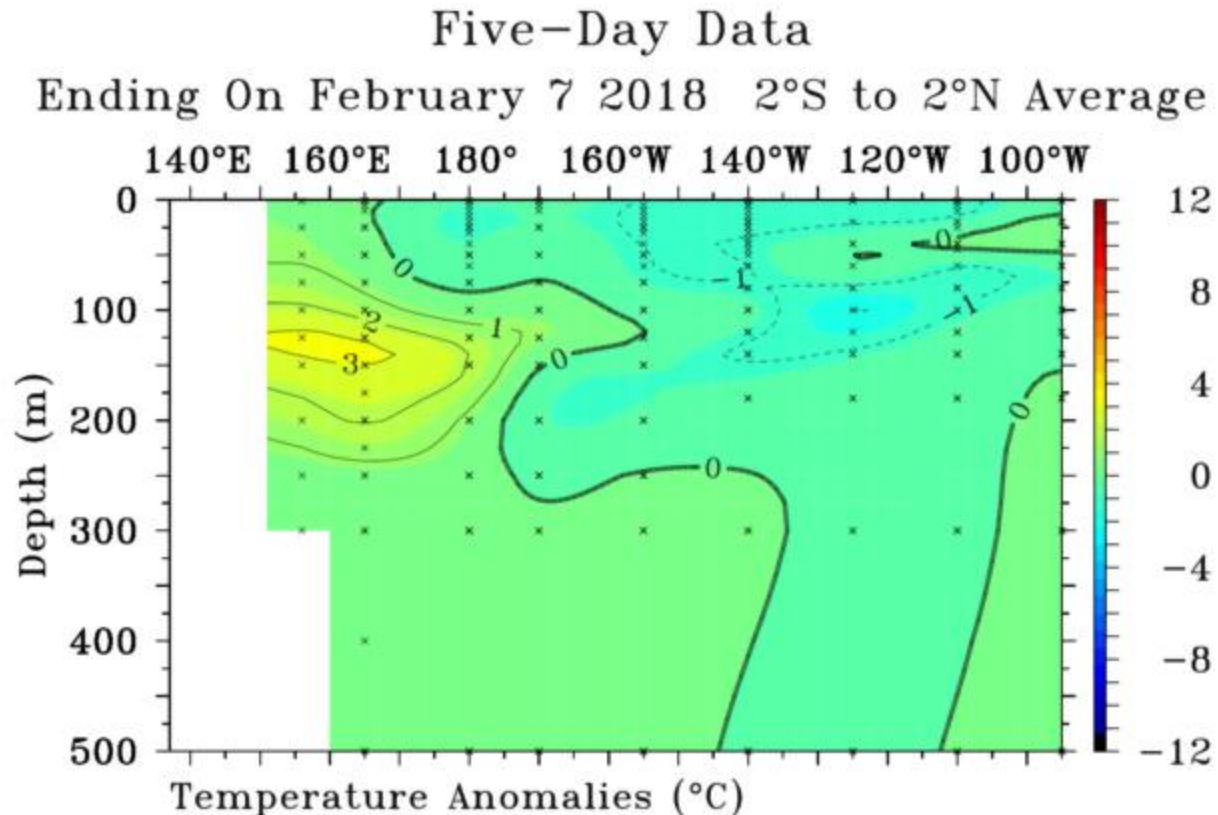
NWS/NCEP/CPC

Last update: Thu Feb 8 2018  
Initial conditions: 9Jan2018-18Jan2018

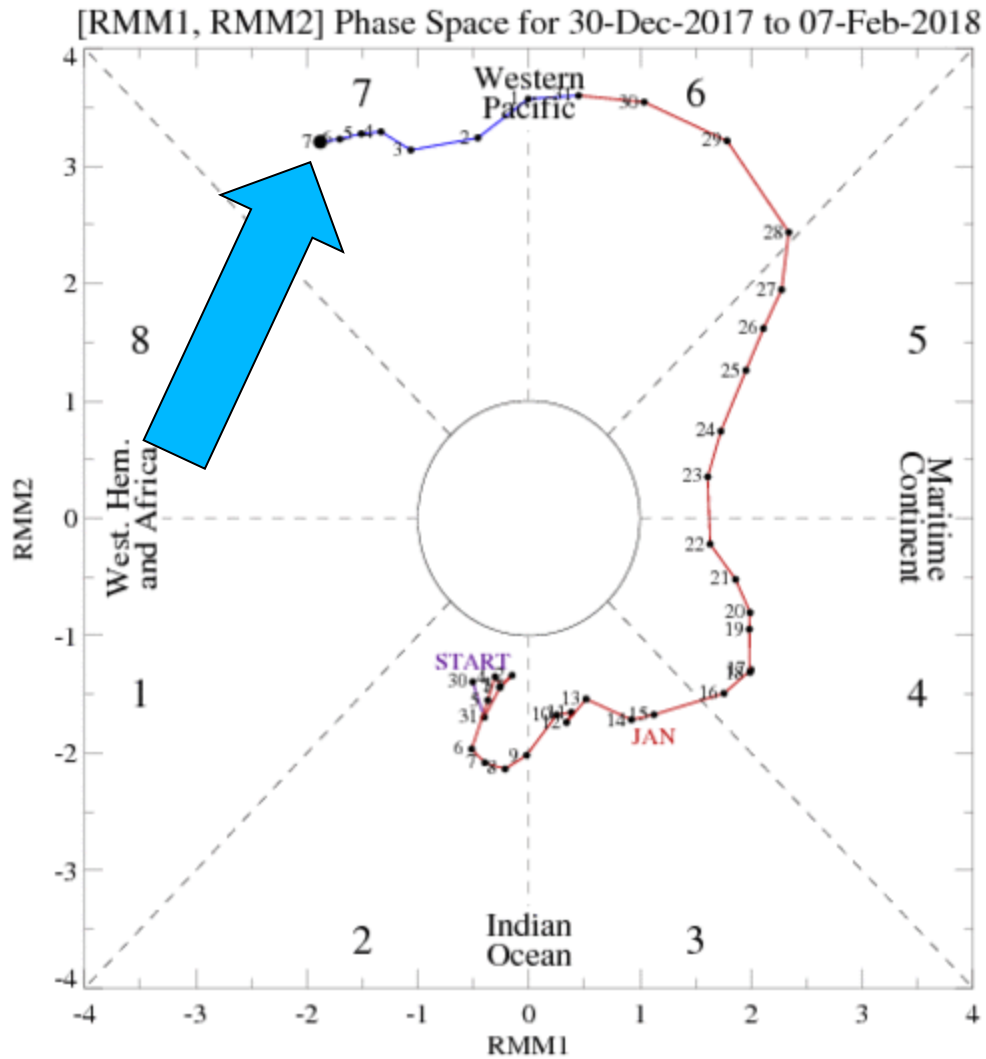
CFSv2 forecast Nino3.4 SST anomalies (K)



# LOOKING BENEATH THE SURFACE ALONG EQUATORIAL PACIFIC ...WEAK LA NINA HOLDING ON

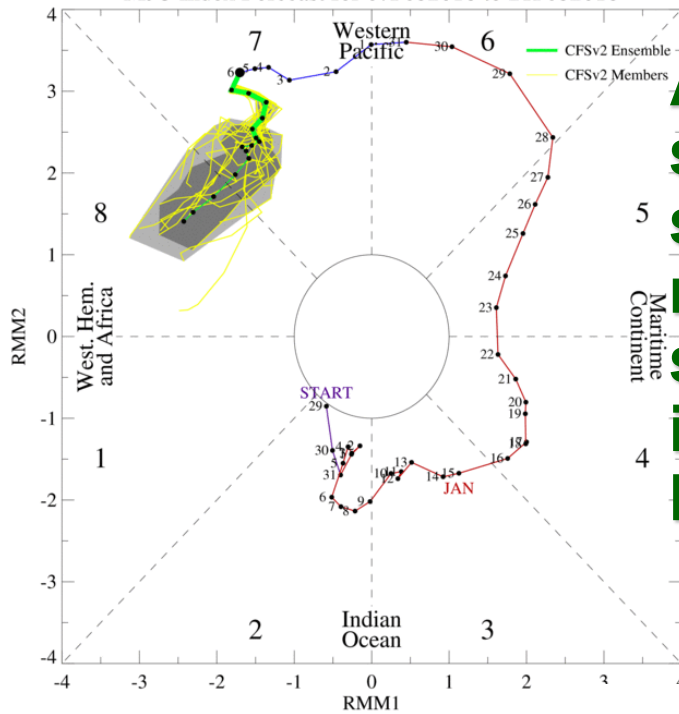


# MJO IS IN PHASE 7



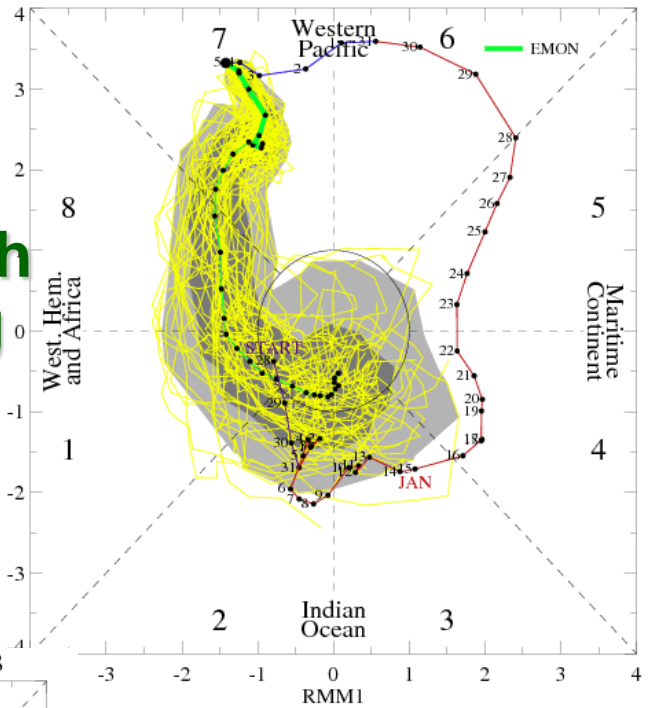


MJO Index Forecast for 07Feb2018 to 21Feb2018

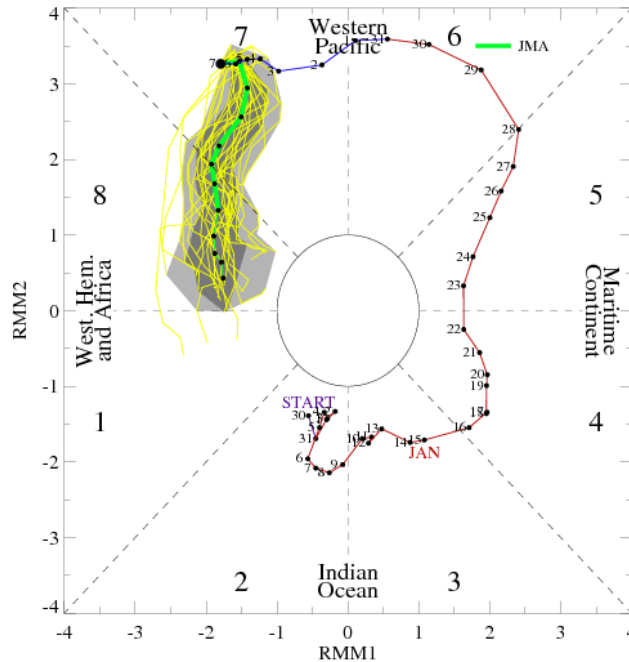


**ALL MODELS**  
**shows Moderate**  
**string Phase 8**  
**rest of FEB with**  
**some weakening**  
**in Phase 1 in**  
**March**

MJO Index Forecast for 06Feb2018-09Mar2018



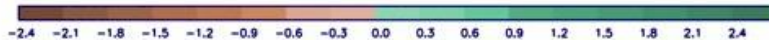
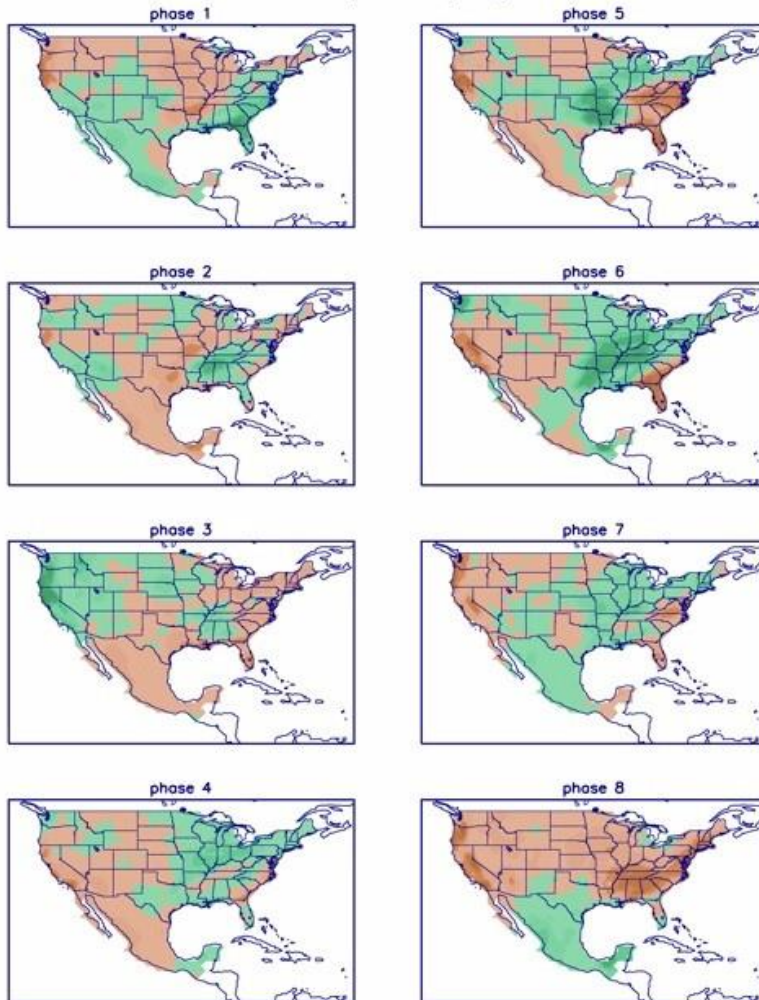
MJO Index Forecast for 08Feb2018-16Feb2018



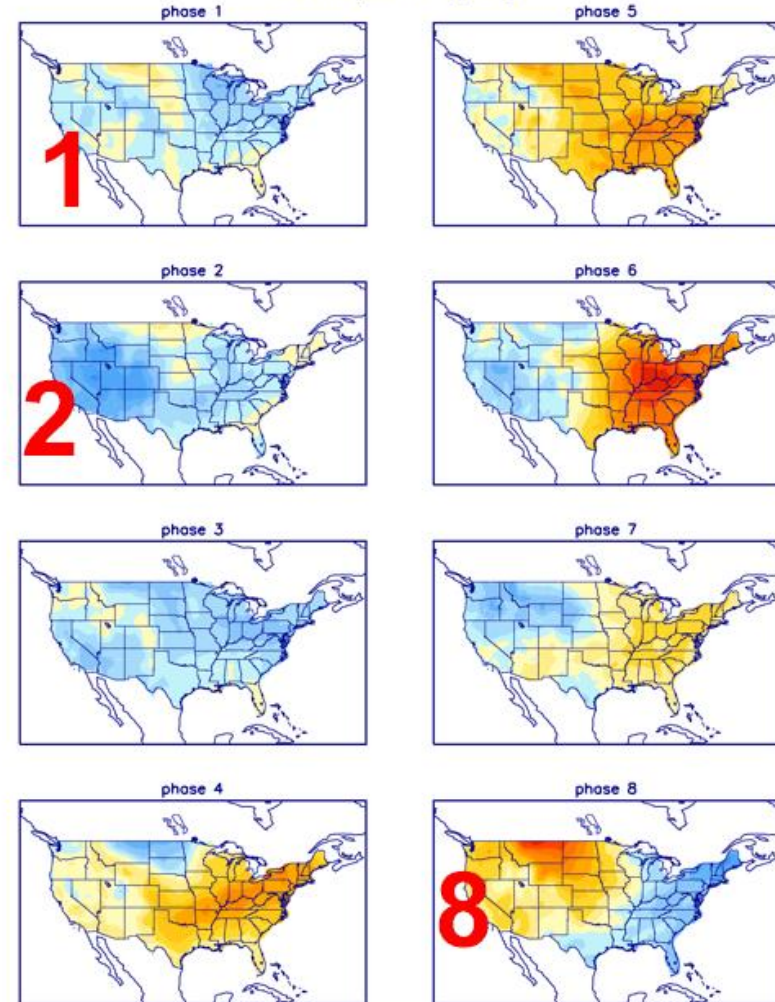
# IN FEB PHASE 8 2 1 DRY OVER PLAINS MIDWEST WET OVER EAST PHASE 1-2

# FEBRUARY

P composites (JFM)



T composites (JFM)

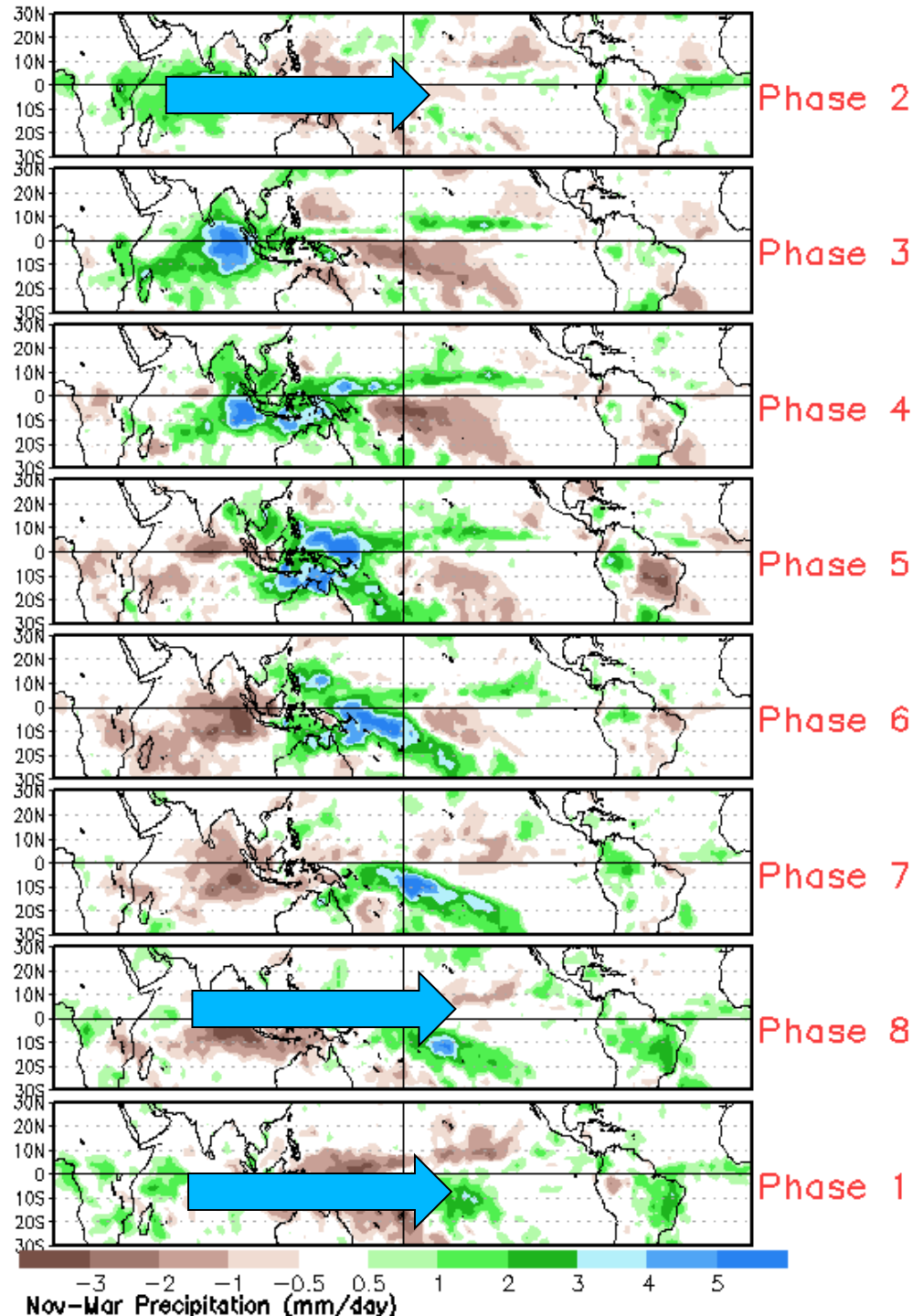


**PHASE 7 west  
BRAZIL TURNS  
WET NORMAL  
RAINS OVER  
ARG**

**PHASE 8**

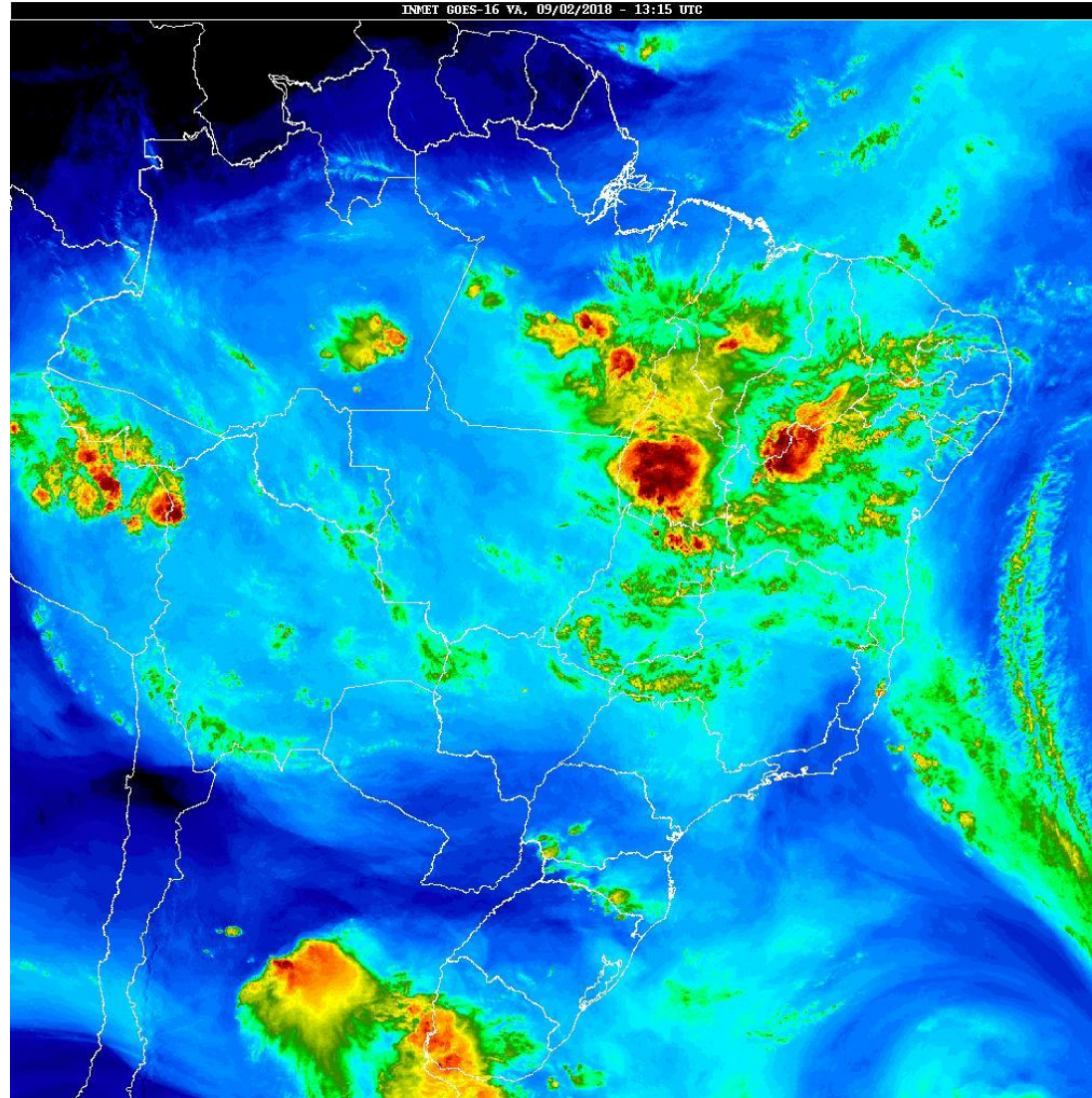
**PHASE 1**

**PHASE 2**



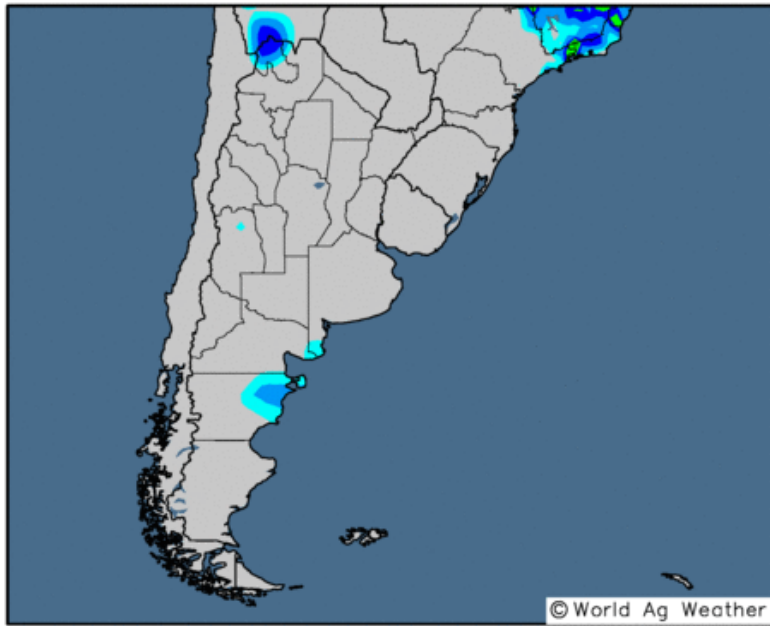
**MID FRI  
MORNING INFRA  
RED SATELLITE**

**Storms  
over  
central  
ARG**



## 24-hour Precipitation Analysis

Observed precipitation (inches) through 12 UTC 7 Feb 2018

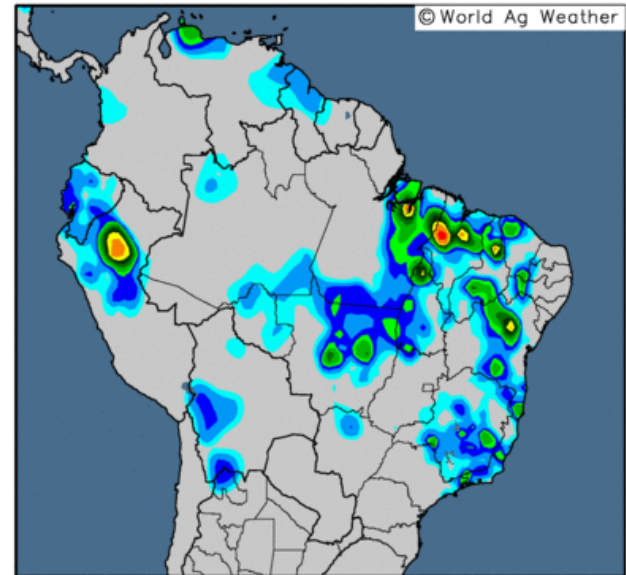


Map updates daily by approximately 20:30 UTC

# RAINFALL FEB 7-8

## 24-hour Precipitation Analysis

Observed precipitation (inches) through 12 UTC 7 Feb 2018



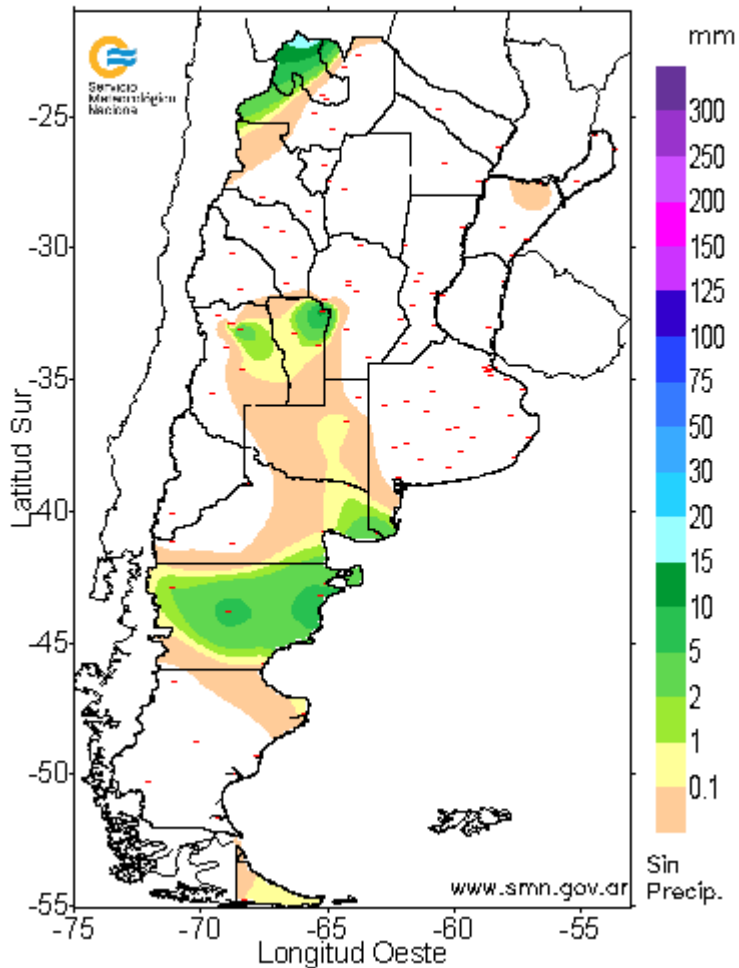
Map updates daily by approximately 20:30 UTC

# PRECIP FEB 8 IN AG & BRAZIL - pretty darn dry even over Brazil

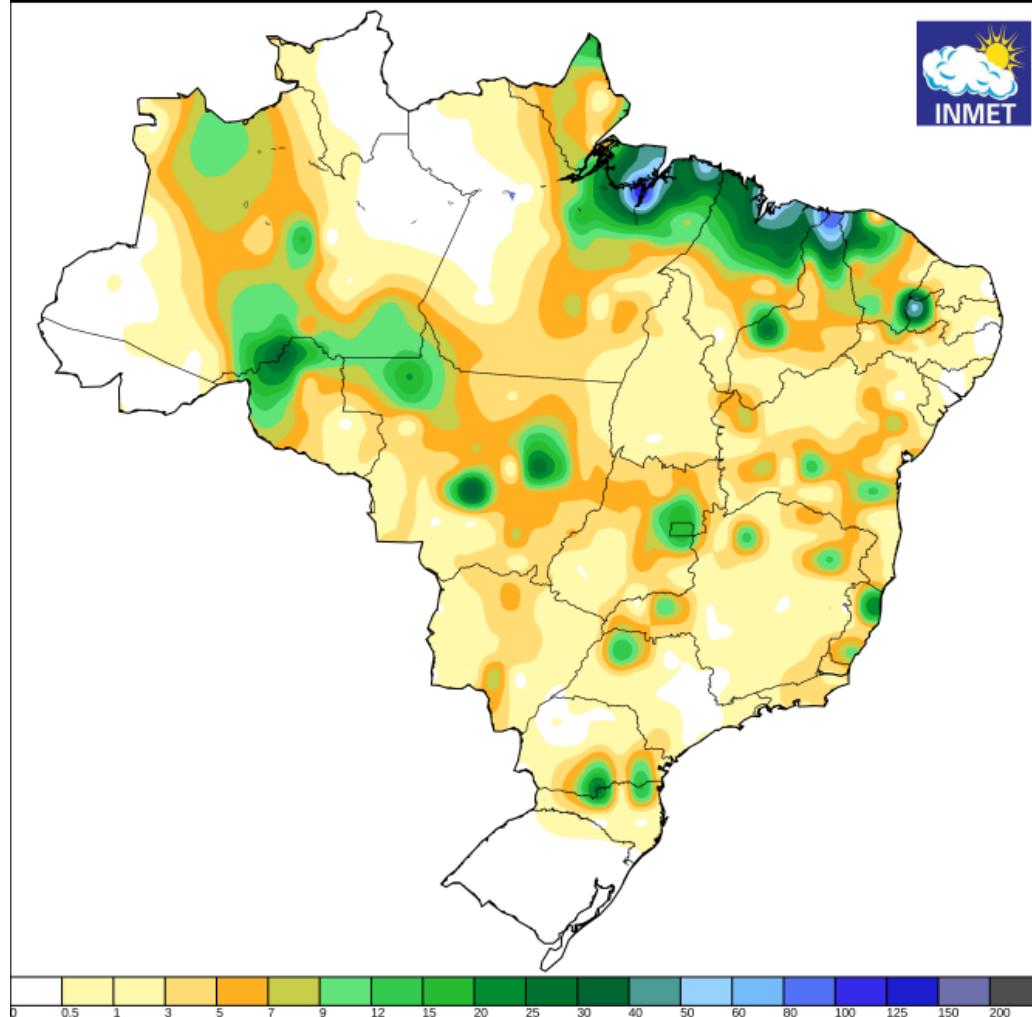
Servicio Meteorológico Nacional

PRECIPITACION (EN MILIMETROS) ACUMULADA EN 24 HORAS

Los valores corresponden al periodo comprendido entre las  
9 hs. del 06 / 02 / 2018 y las 9 hs. del 07 / 02 / 2018

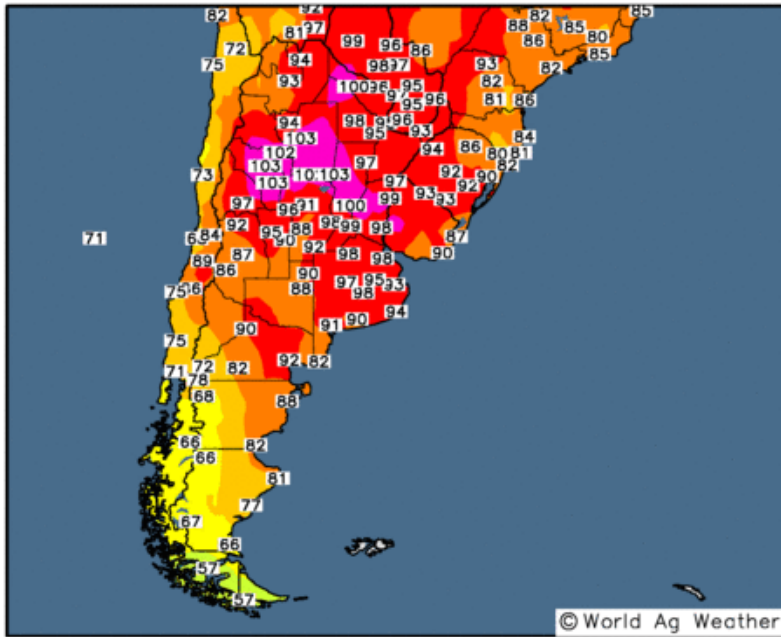


Instituto Nacional de Meteorologia - INMET  
Precipitação Acumulada em 24 horas  
Mapa do dia 08/02/2018



Observed Maximum Temperature (°F)

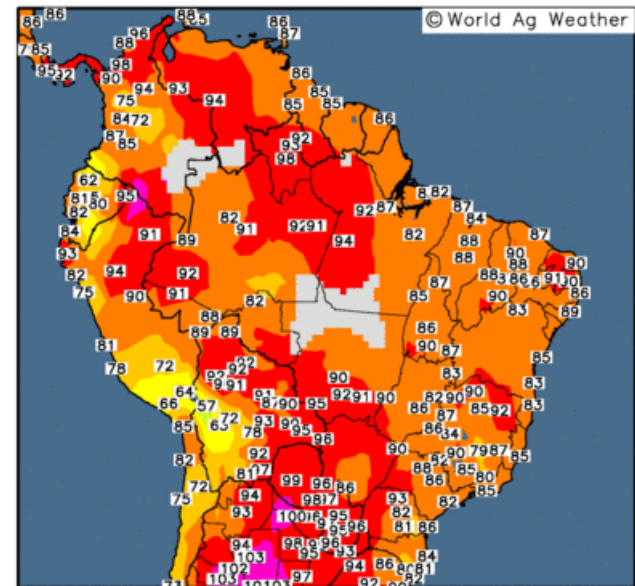
7 Feb 2018



**FEB 7 MAX  
TEMPS ARG  
95-104F/ 34-40c**

Observed Maximum Temperature (°F)

7 Feb 2018



Map updates daily by approximately 16:00 UTC

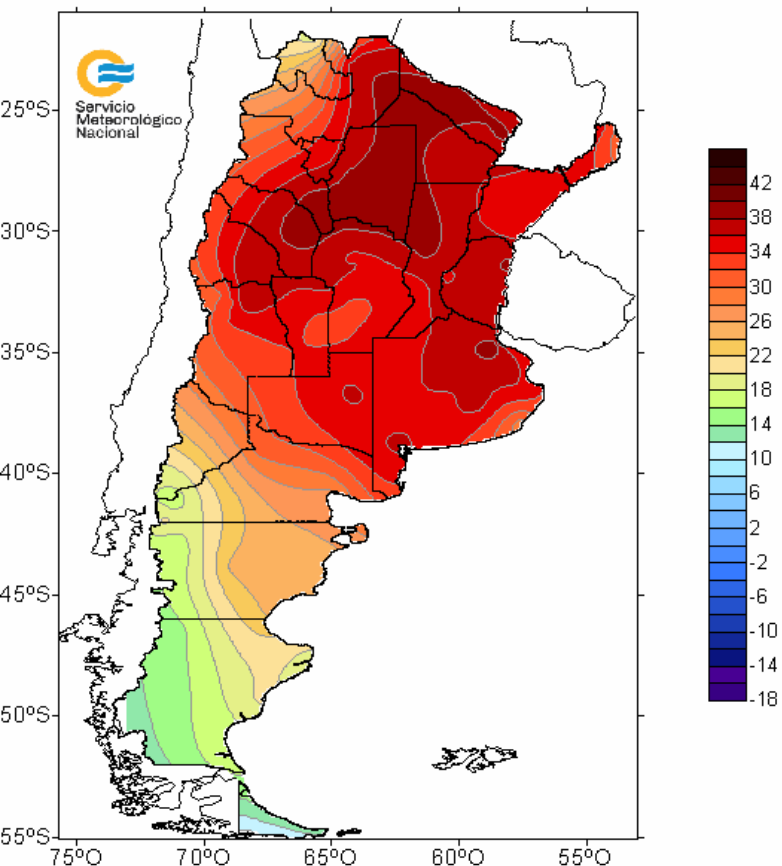
**FEB 7 MAX  
TEMPS Brazil**



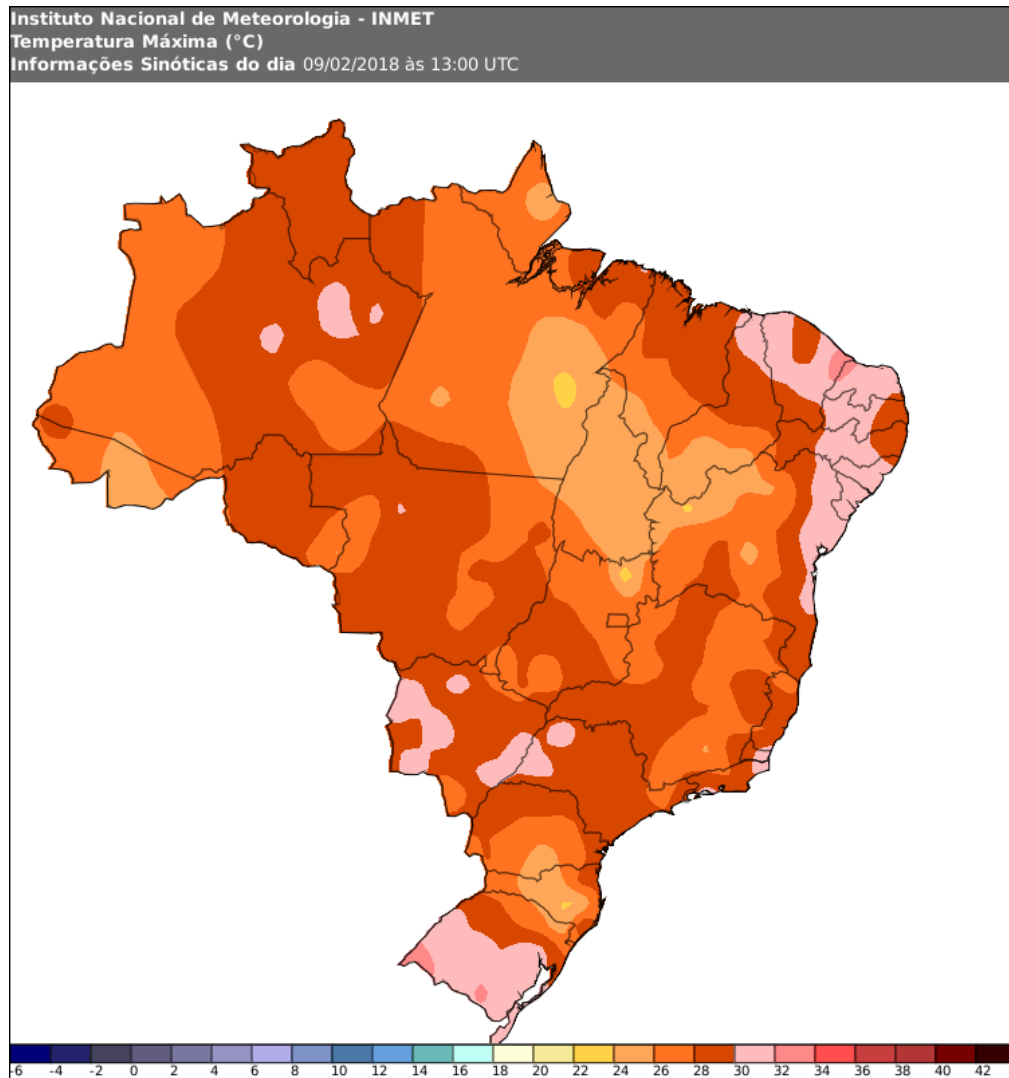
Map updates daily by approximately 16:00 UTC

# MAZ TEMP FEB 8 IN AG & BRAZIL - 34-38c/ 94-100f

## TEMPERATURAS MAXIMAS 08 de Febrero de 2018



Servicio Meteorológico Nacional

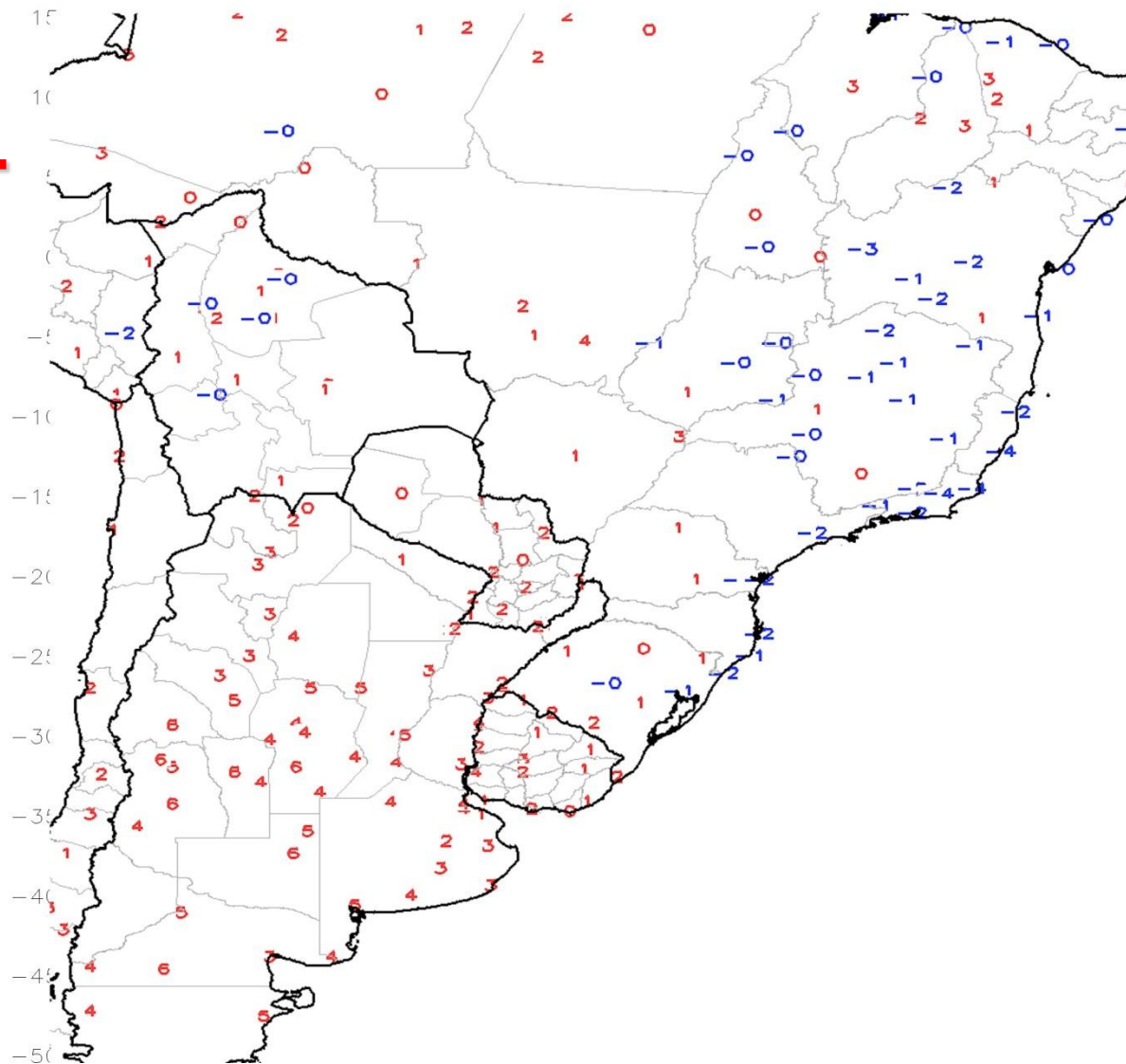




# TEMP ANOMALY PAST 7 DAYS OVER CENTRAL ARG

GTS Station Running 7-Day Average Temperature Anomaly (C)

Period: 01Feb2018 - 07Feb2018



# TOTAL RAINFALL FROM EURO ENSEMBLE NEXT 7 DAYS

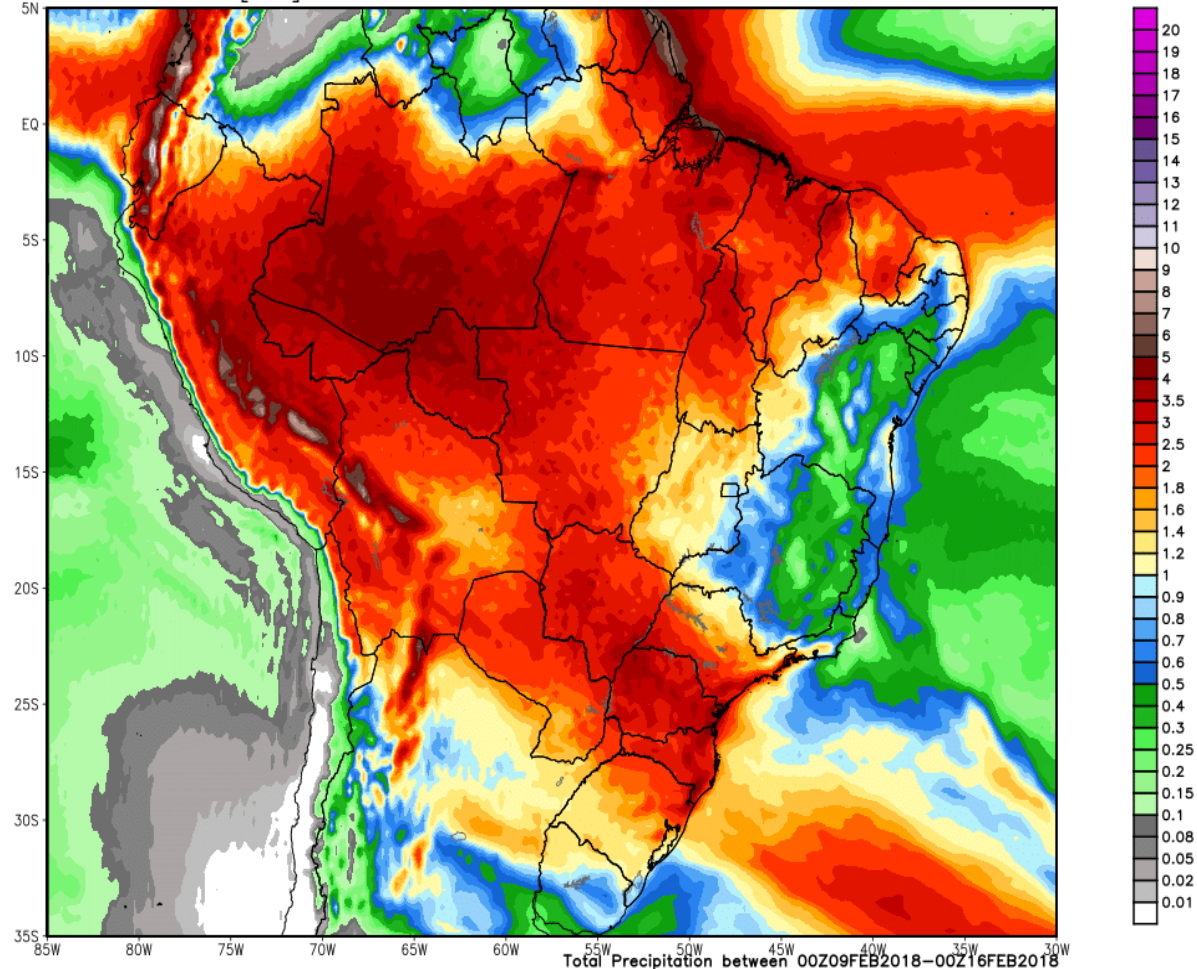
ECMWF EPS Ensemble Mean Total Precipitation [inches]  
Init: 00Z09FEB2018 -- [168] hr --> Valid thru Fri 00Z16FEB2018

Maximum: 13.1 in.

**2-4"/ 50-100mm**

**Sao Paulo Parana  
Santa Catarina  
MGDS Mato Grosso**

**0.5-1.5"/ 12-38mm  
60% coverage ARG  
70% North ARG**

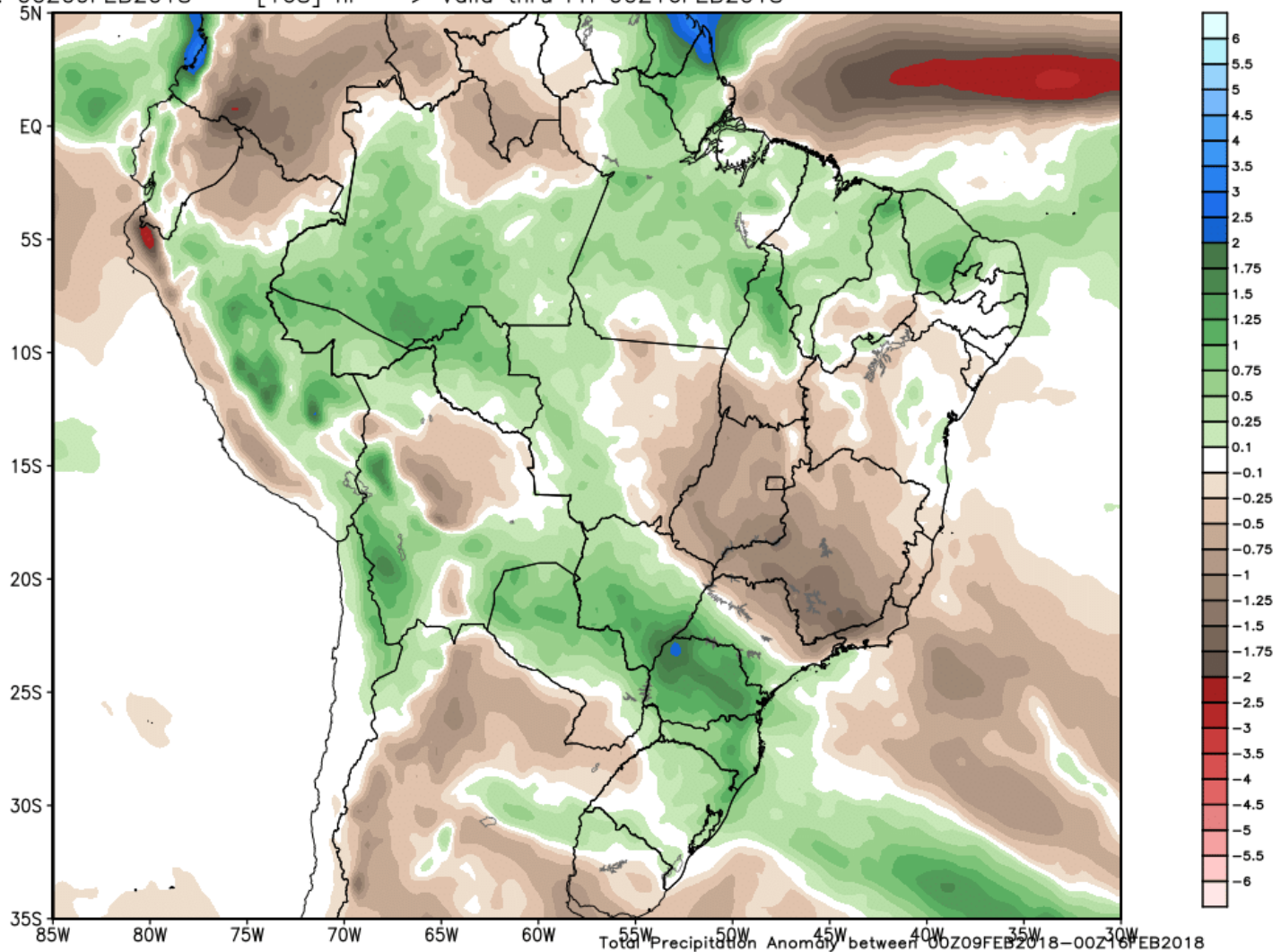


# PRECIP ANOMALIES OVER NEXT WEEK

...inches. Note even with these rains in ARG Much of that area is still on the dry side

ECMWF EPS Ensemble Mean Total Precipitation Anomaly [inches]  
Init: 00Z09FEB2018 -- [168] hr --> Valid thru Fri 00Z16FEB2018

Min|Max: -4.5 | 3.8 inch



# TOTAL RAINFALL FROM EURO ENSEMBLE NEXT 14 DAYS

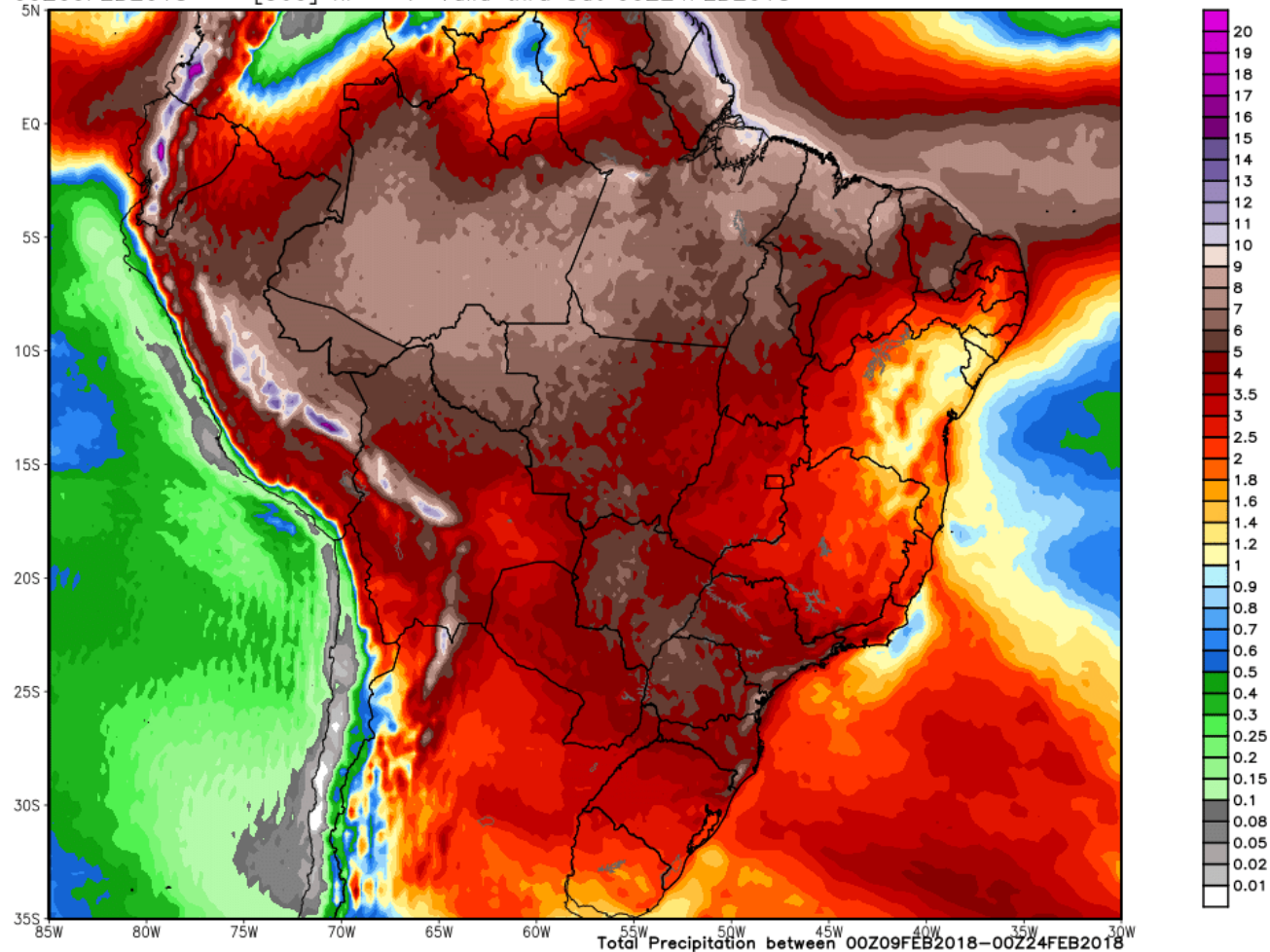
ECMWF EPS Ensemble Mean Total Precipitation [inches]  
Init: 00Z09FEB2018 -- [360] hr --> Valid thru Sat 00Z24FEB2018

Maximum: 21.5 in.

**3-47/ 75-175mm**

**Sao Paulo Parag  
Parana Santa  
Catarina MGDS  
Mato Grosso**

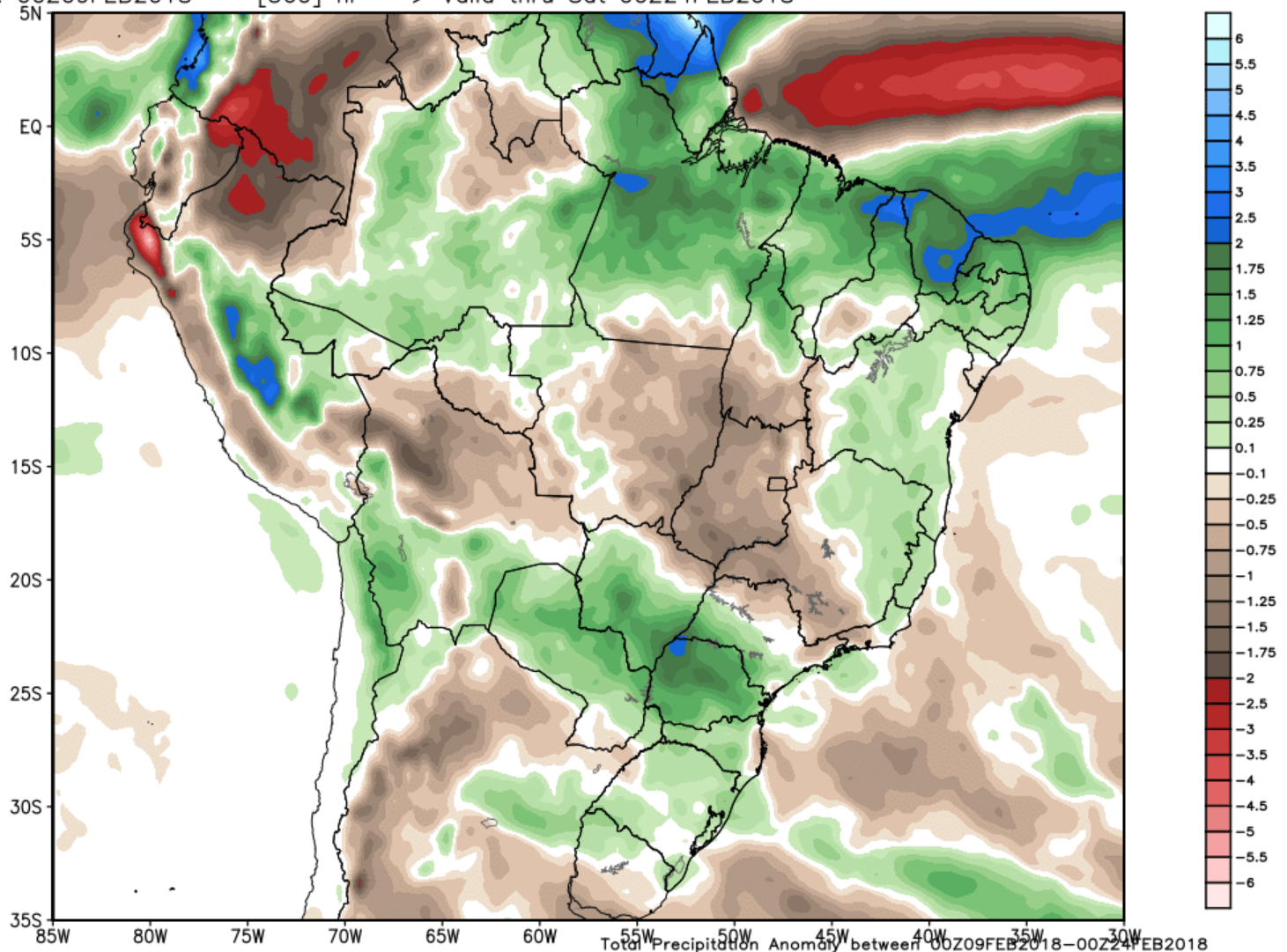
**1.0-2.0"/ 25-50  
mm central ARG  
2-4"/50-100mm  
North ARG**



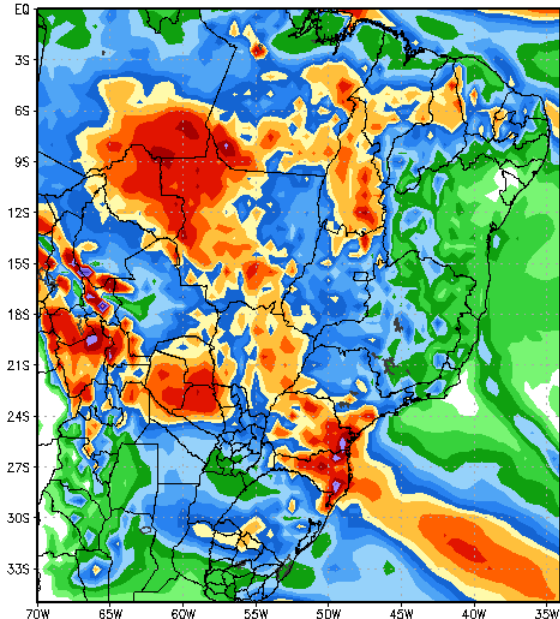
# PRECIP ANOMALIES OVER NEXT 2 WEEK ...inches. Note even with these rains in ARG Much of that area is still on the dry side

ECMWF EPS Ensemble Mean Total Precipitation Anomaly [inches]  
Init: 00Z09FEB2018 -- [360] hr --> Valid thru Sat 00Z24FEB2018

Min|Max: -7.8 | 6.8 inch



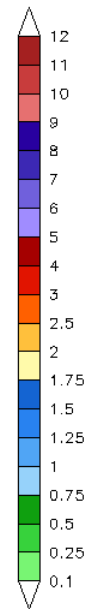
120 Hour Total Precipitation (in)  
Valid: 00z Fri 09 Feb 2018 - 00z Wed 14 Feb 2018



Max: 10.2 in  
Min: 0.0 in

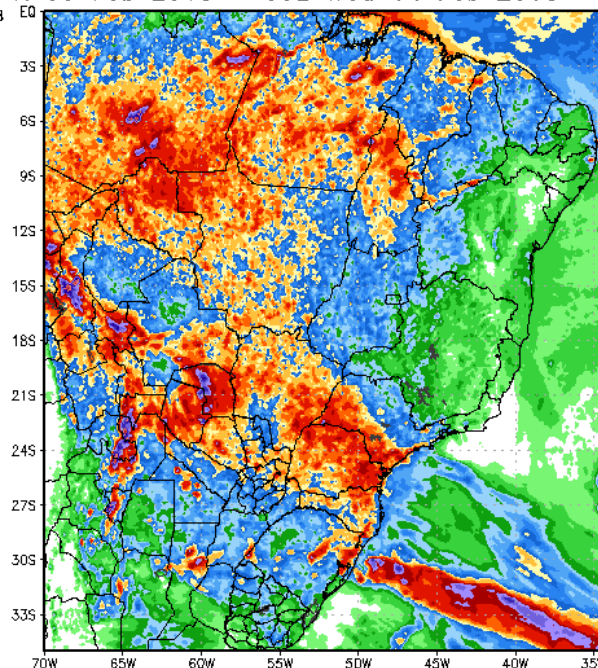
StormVistaWxModels.com

GFS-ENS-MAXRES  
Hour: 0 - 120



# RAINFALL NEXT 5 DAYS

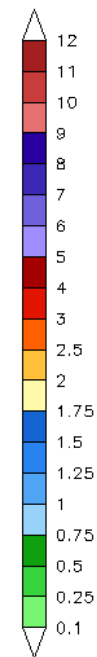
Total Precipitation (in)  
Fri 09 Feb 2018 - 00z Wed 14 Feb 2018



Max: 11.4 in  
Min: 0.0 in

StormVistaWxModels.com

ECMWF-MAXRES  
Hour: 0 - 120



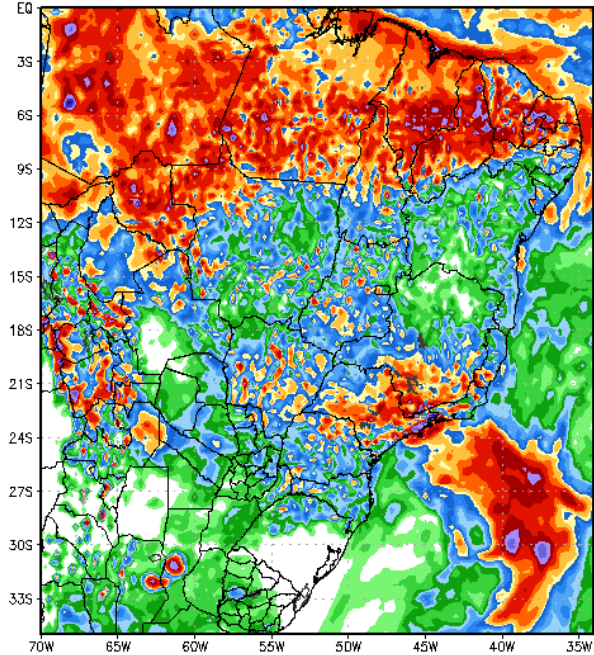
Init: 00z Fri 09 Feb 2018  
2018-02-09-06:20

**3-47/ 75-175mm**

**Sao Paulo Parag  
Parana Santa Catarina  
MGDS Mato Grosso**

120 Hour Total Precipitation (in)  
Valid: 00z Wed 14 Feb 2018 - 00z Mon 19 Feb 2018

GFS-MAXRES  
Hour: 120 - 240



Max: 10.7 in  
Min: 0.0 in

StormVistaWxModels.com

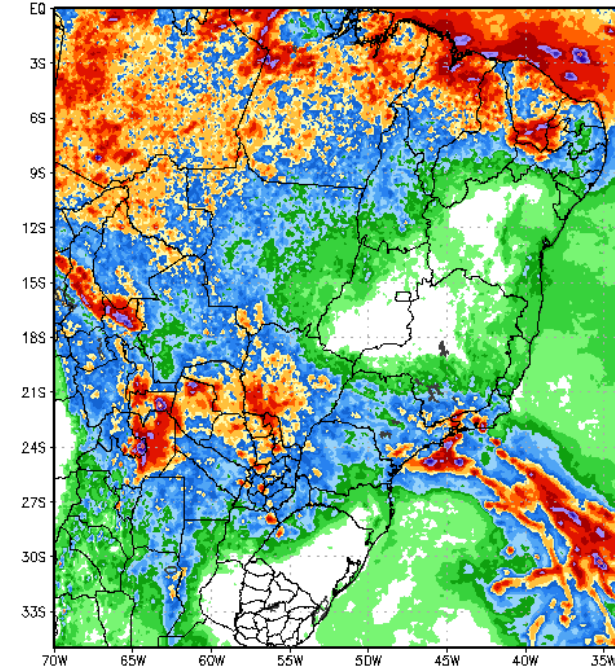
Init: 00z Fri 09 Feb 2018  
2018-02-09-04:41

# 6-10DAY RAINS

**Both Models are somewhat WETTER over ARG... compared to Thu/ Wed -- especially EURO. Still this is NOT a "lot " of rain 0.5-1.5"/12-38mm 50% coverage**

Total Precipitation (in)  
z Wed 14 Feb 2018 - 00z Mon 19 Feb 2018

ECMWF-MAXRES  
Hour: 120 - 240

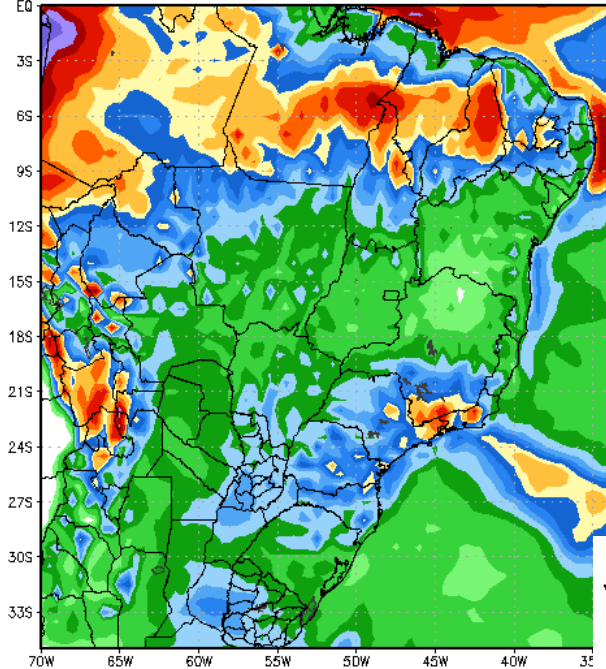


Max: 13.0 in  
Min: 0.0 in

StormVistaWxModels.com

Init: 00z Fri 09 Feb 2018  
2018-02-09-06:55

120 Hour Total Precipitation (in)  
Valid: 00z Wed 14 Feb 2018 - 00z Mon 19 Feb 2018



GFS-ENS-MAXRES  
Hour: 120 - 240

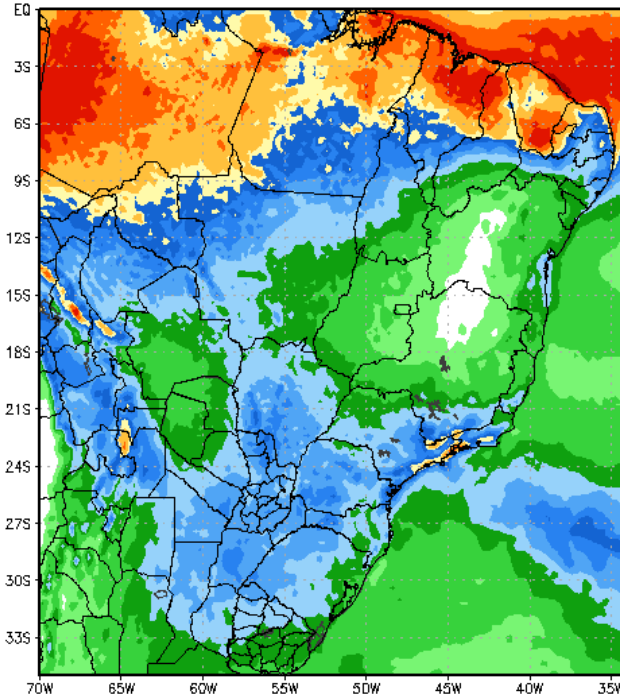
# 6-10DAY Ensembles

Max: 6.5 in  
Min: 0.0 in

StormVistaWxModels.com

120 Hour Total Precipitation (in)  
Valid: 00z Wed 14 Feb 2018 - 00z Mon 19 Feb 2018

ECMWF-EPS-MAXRES  
Hour: 120 - 240



Max: 4.5 in  
Min: 0.0 in

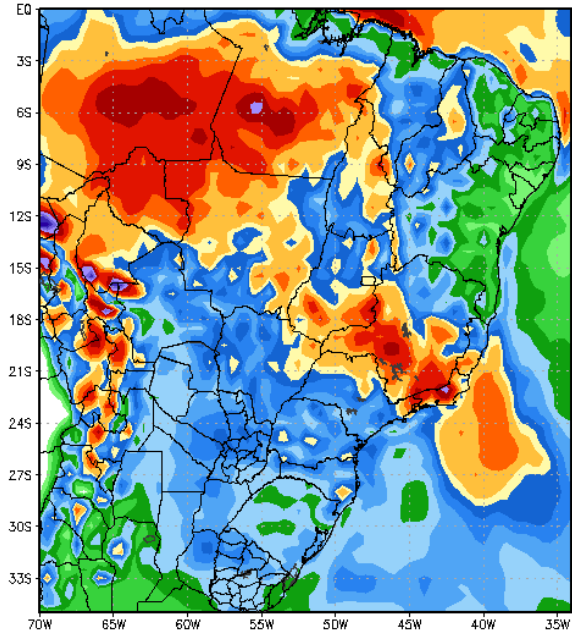
StormVistaWxModels.com

Init: 00z Fri 09 Feb 2018  
2018-02-09-07:41

**Both Models are WETTER over ARG... compared to Thu/ Wed -- especially EURO ensemble. Still this is NOT a "lot " of rain 0.5-1.5"/12-38mm**



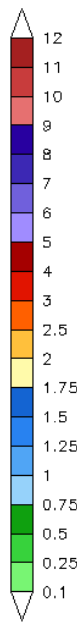
120 Hour Total Precipitation (in)  
Valid: 00z Mon 19 Feb 2018 - 00z Sat 24 Feb 2018



Max: 8.5 in  
Min: 0.0 in

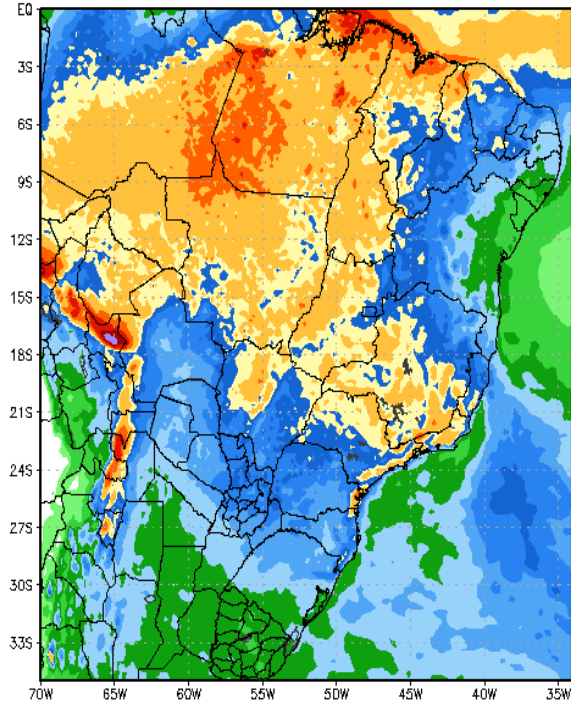
StormVistaWxModels.com

GFS-ENS-MAXRES  
Hour: 240 - 360



# 11-15 DAY Ensembles

120 Hour Total Precipitation (in)  
Valid: 00z Mon 19 Feb 2018 - 00z Sat 24 Feb 2018



Max: 5.8 in  
Min: 0.0 in

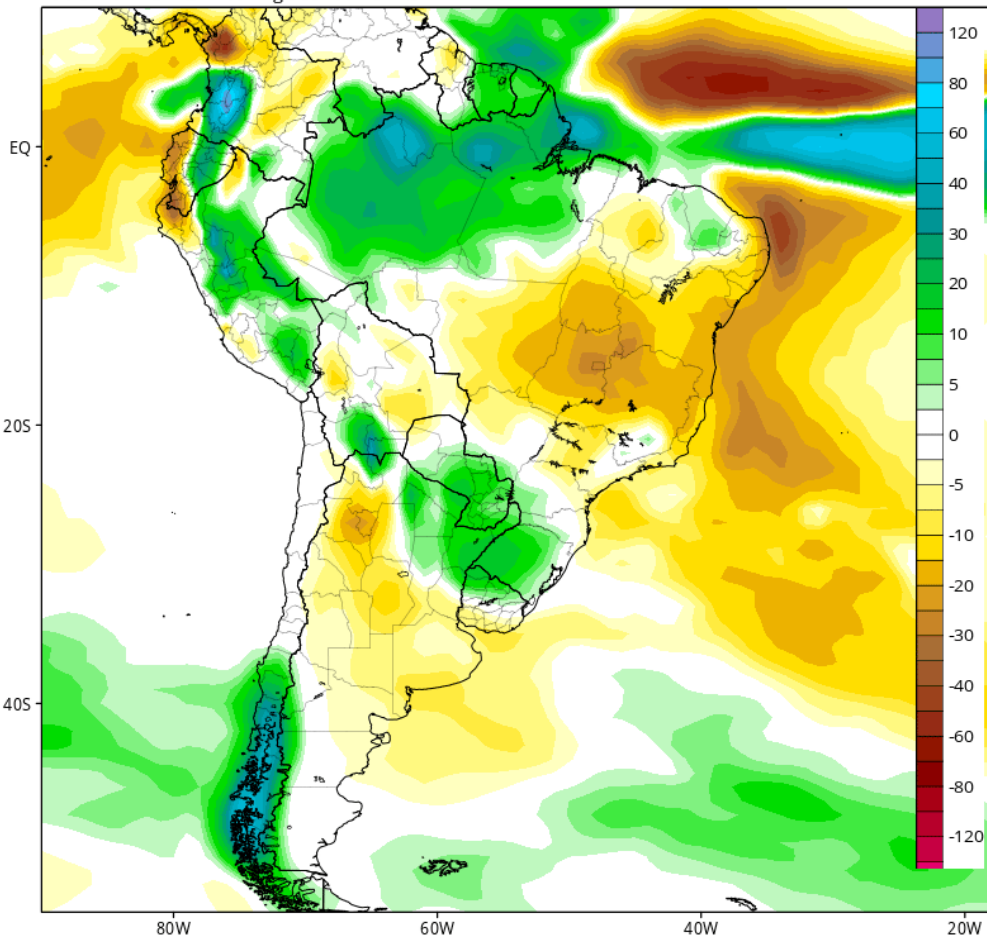
StormVistaWxModels.com

Init: 00z Fri 09 Feb 2018  
2018-02-09-08:01

CFSv2 Accumulated Precip. Anomaly (mm) from 00z16Feb2018 to 00z23Feb2018 (Days 8-14)

Average of last 48 forecasts (12 runs x 4 members)

Init: 06z Feb 06 2018 through 00z Feb 09 2018

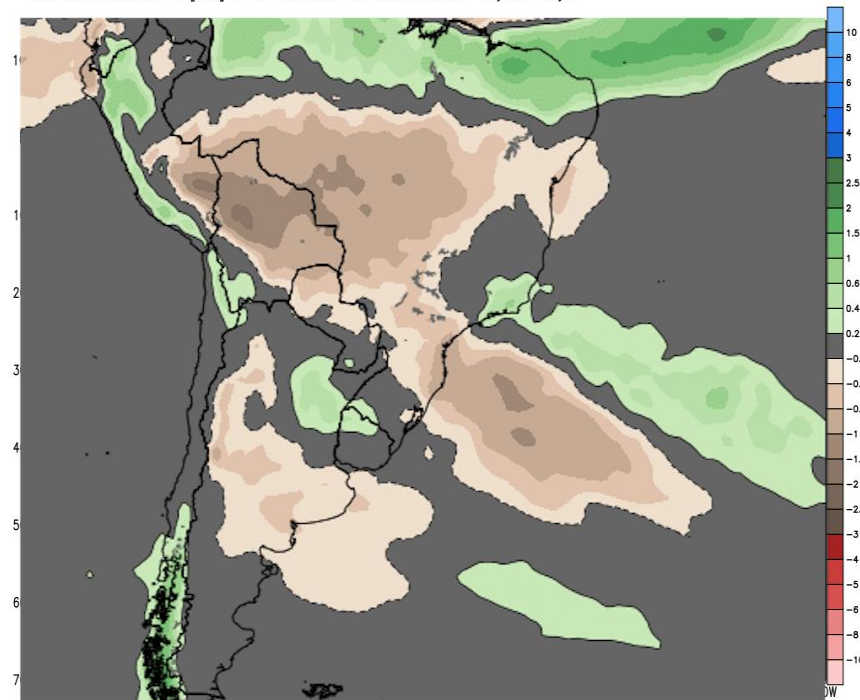


# WEEK 2 RAINFALL ANOMALIES

ECMWF EPS Ensemble Mean 7-day Avg Precipitation Anomaly [inch]

Init: 00Z08FEB2018 -- [168] hr --> Valid on Thu 00Z22FEB2018 Day 0 - Day 7

Min|Max Anom: -3.0 | 3.0 inch

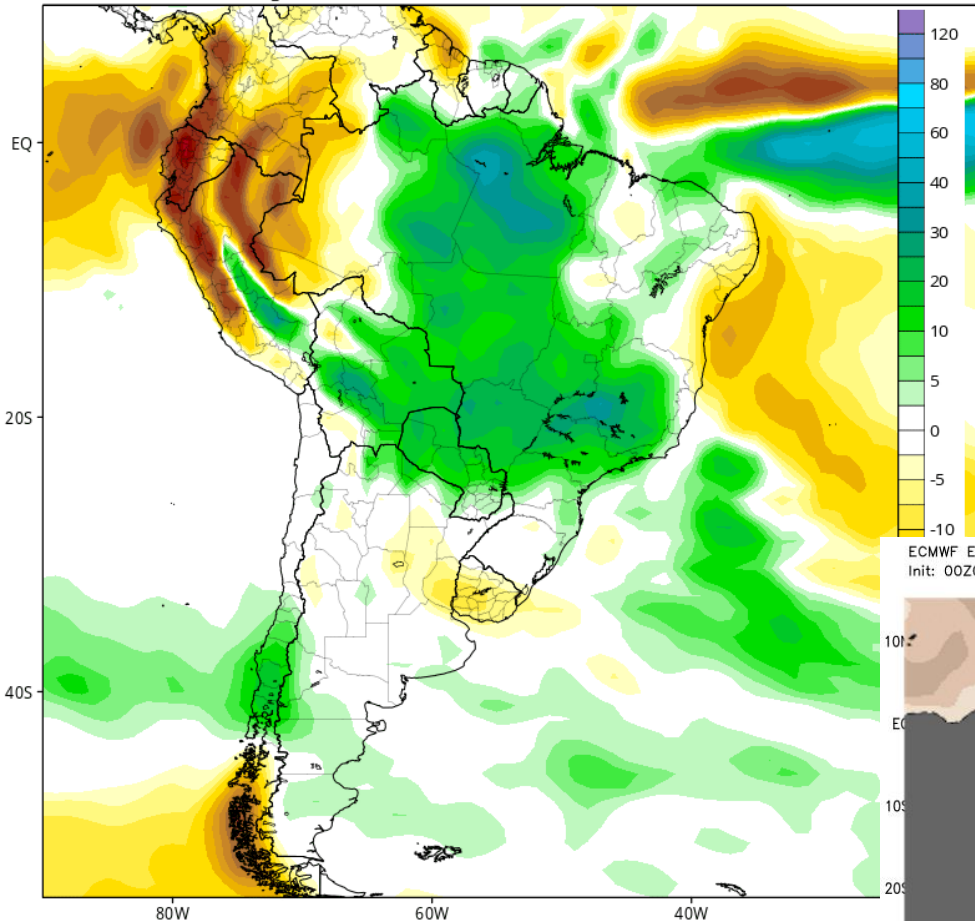


Accumulation between 00Z15FEB2018-00Z22FEB2018 | ECMWF EPS 1997-2016 Hindcast Climatology

CFSv2 Accumulated Precip. Anomaly (mm) from 00z23Feb2018 to 00z02Mar2018 (Days 15-21)

Average of last 48 forecasts (12 runs x 4 members)

Init: 06z Feb 06 2018 through 00z Feb 09 2018

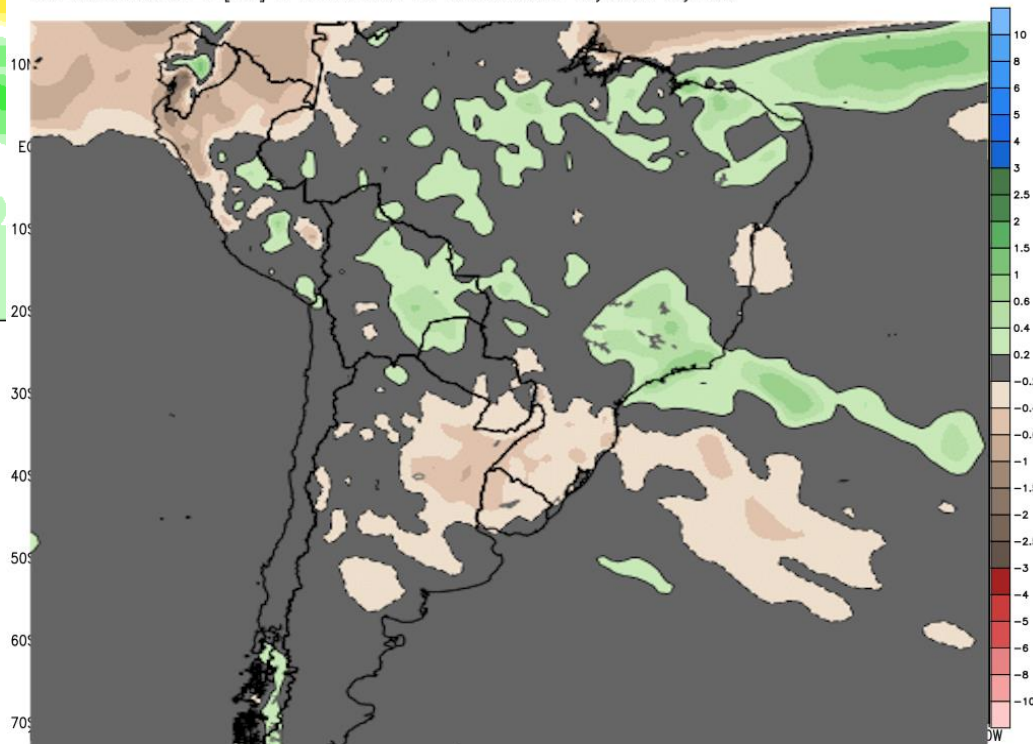


# WEEK 3 RAINFALL ANOMALIES

ECMWF EPS Ensemble Mean 7-day Avg Precipitation Anomaly [inch]

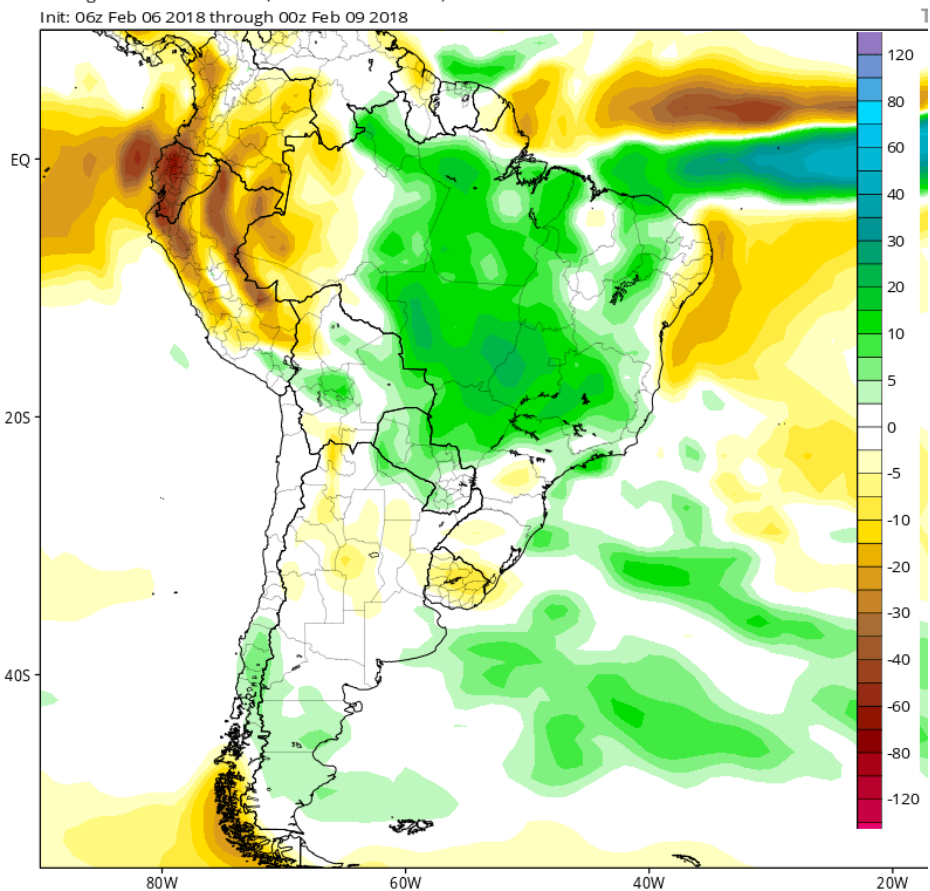
Init: 00Z08FEB2018 -- [252] hr --> Valid on Thu 00Z01MAR2018 Day 3.5 - Day 10.5

Min|Max Anom: -6.6 | 2.5 inch



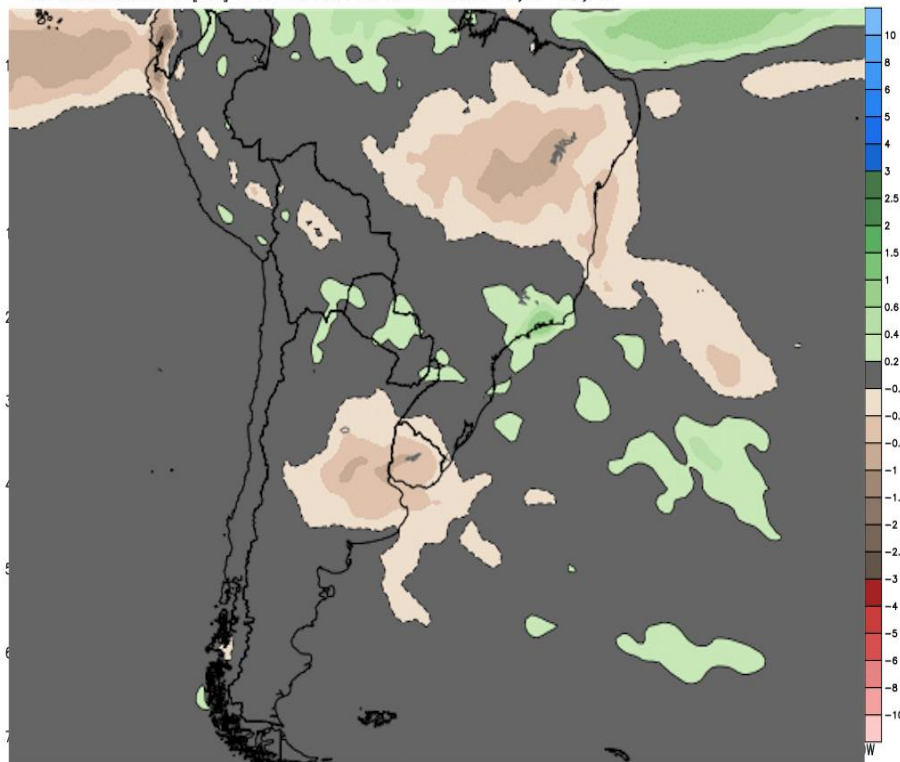
Accumulation between 00Z22FEB2018-00Z01MAR2018 | ECMWF EPS 1997-2016 Hindcast Climatology

CFSv2 Accumulated Precip. Anomaly (mm) from 00z02Mar2018 to 00z09Mar2018 (Days 22-28)  
Average of last 48 forecasts (12 runs x 4 members)  
Init: 06z Feb 06 2018 through 00z Feb 09 2018



# WEEK 4 RAINFALL ANOMALIES

ECMWF EPS Ensemble Mean 7-day Avg Precipitation Anomaly [inch]  
Init: 00Z08FEB2018 -- [336] hr --> Valid on Thu 00Z08MAR2018 Day 7 - Day 14  
Min|Max Anom: -3.1 | 2.8 inch



Accumulation between 00Z01MAR2018-00Z08MAR2018 | ECMWF EPS 1997-2016 Hindcast Climatology

# CFS FOR MARCH

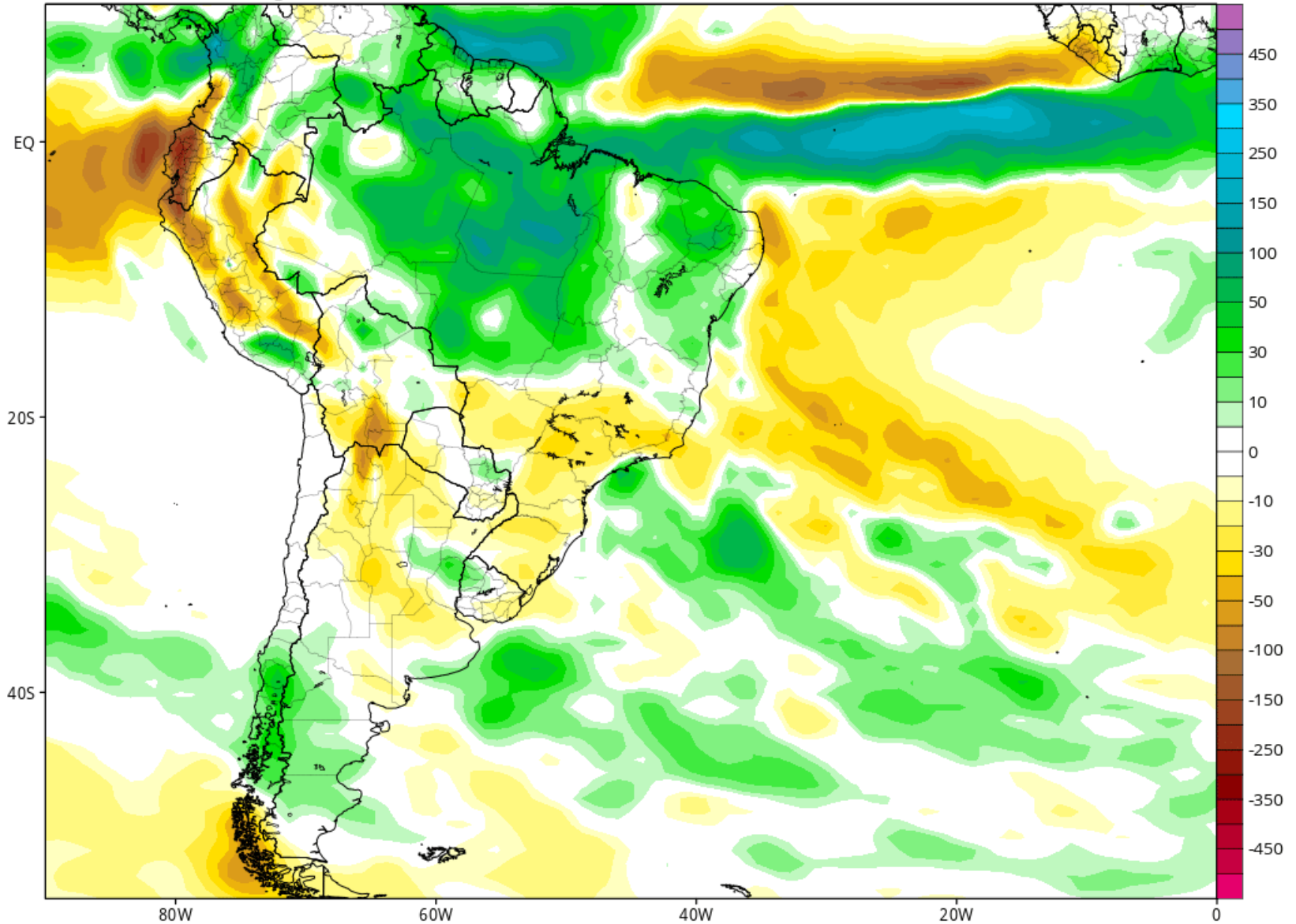
CFSv2 Total Accumulated Precipitation Anomaly (mm)

Average of last 12 forecasts (12 runs x 1 members)

Init: 00z Feb 06 2018 through 18z Feb 08 2018

Valid for: Mar 2018

TROPICALTIDBITS.COM



# SUMMARY

- 1. LA NINA still kicking ... Bias towards rains underperforming in ARG and east central Brazil**
- 2. MJO still moderate as it goes into Phase 8. Again this sets up bias for Below Normal rains over ARG Above Normal for Brazil especially east central Brazil. MJO 8 tends to counter impacts of La Nina**
- 3. 1-5D in ARG slightly weaker and this is also true for se and se Brazil rains**
- 4. 6-10D which was DRY in ARG on Wed & Thus wetter on all Models. Not BIG rains but clearly wetter**
- 5. 11-15D unchanged.. Still look like Moderate ran all of ARG with best rain over North third ARG 1-2"/ 25-60mm 70% coverage ... Central/ eastern ARG 0.5-1.5"/ 12-38mm.**
- 6. Extreme heat for ARG is over and not threat of it coming back for next 2 weeks**