



Weather Forecasting For
Traders, Investors, and Businesses

US HRWW / S.AMERICA GRAIN WEATHER ISSUES

as of FRIDAY
16 FEBRUARY 2018



LOCATED in Richmond VA

Featured frequently on AGRI-MONEY

EMAIL WXRISK@VERZION .NET



@WXRISK.COM



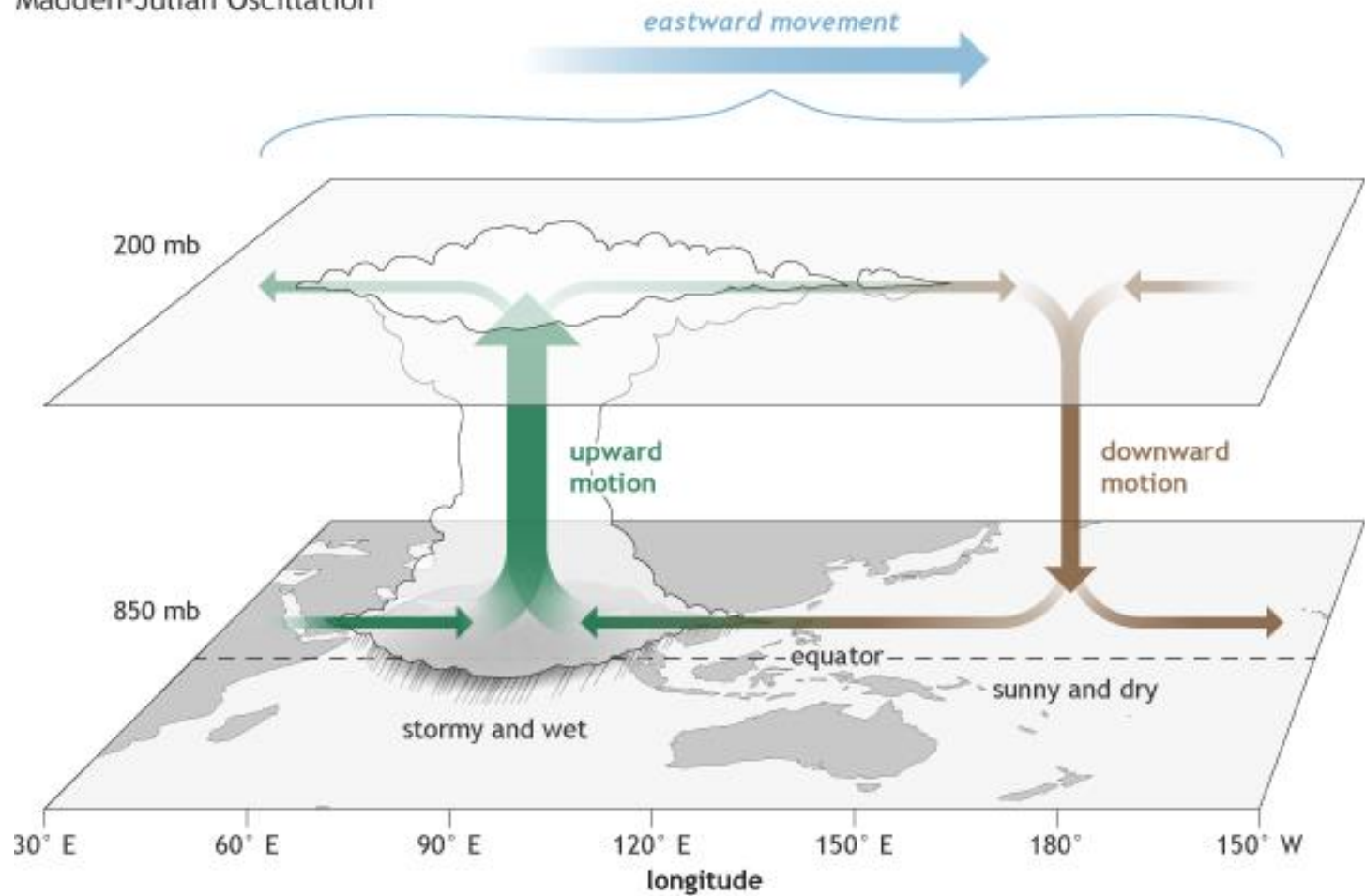
<https://www.facebook.com/WxRisk>

wxrisk@gmail.com

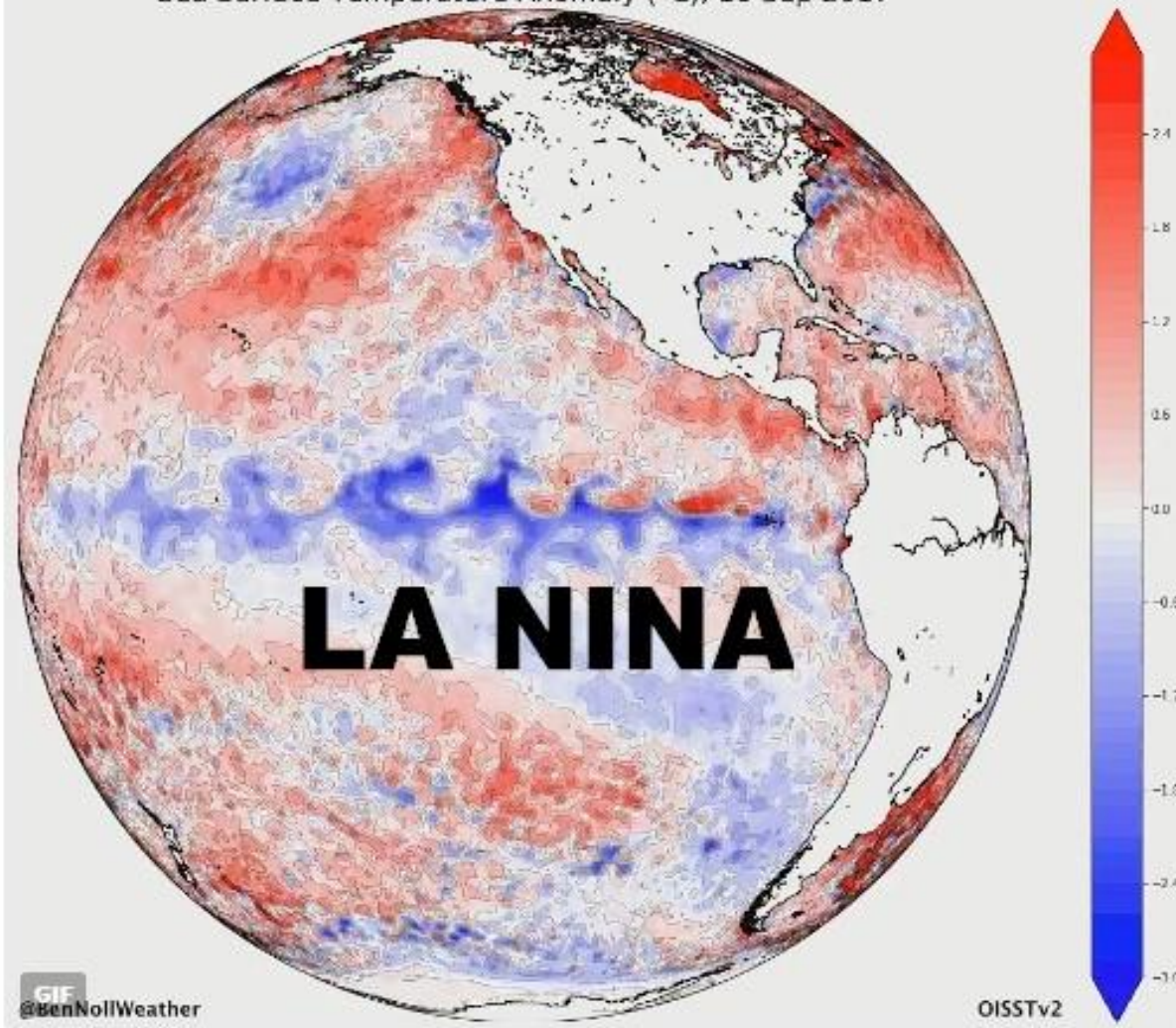


LETS TALK MJO/ENSO

Madden-Julian Oscillation

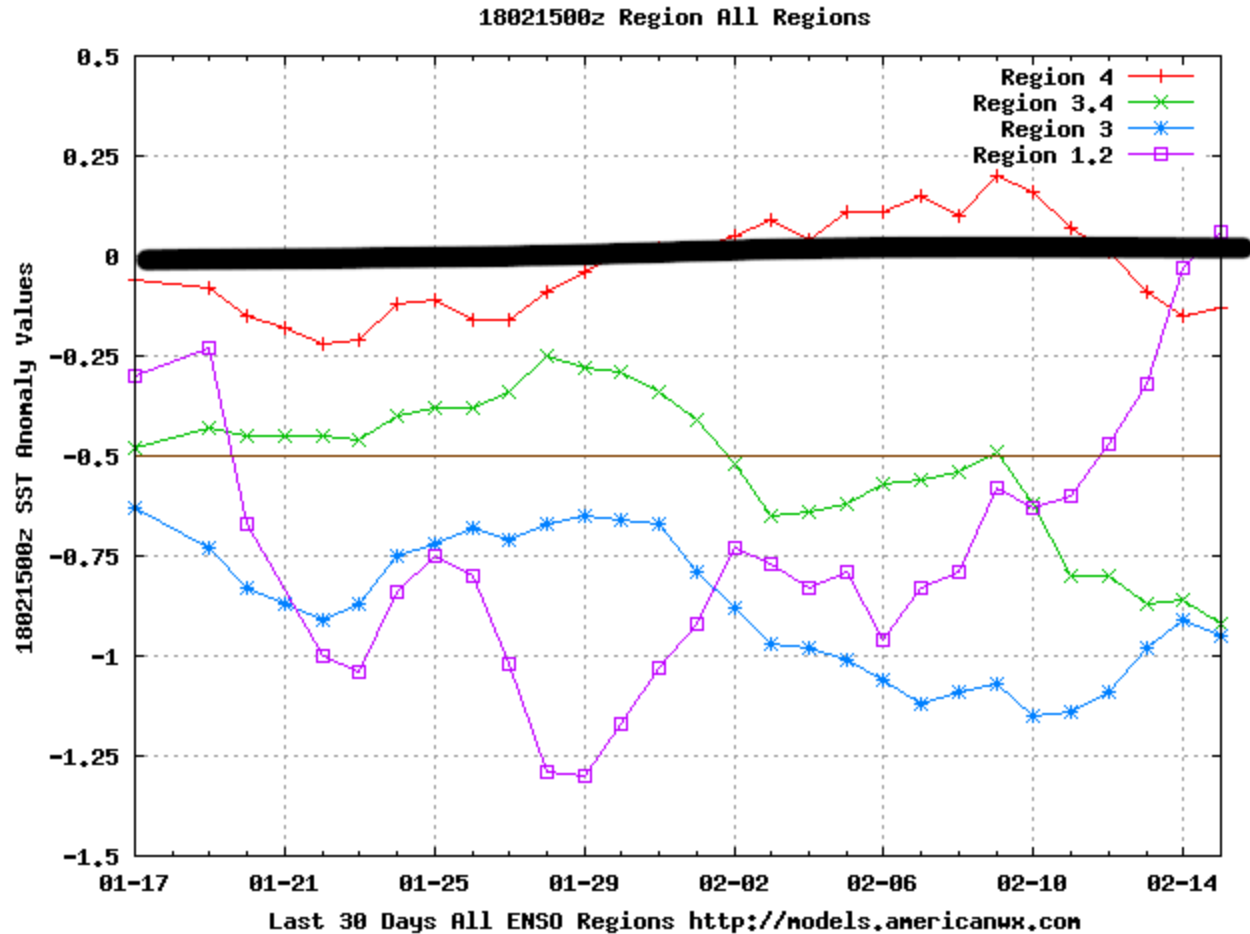


Sea Surface Temperature Anomaly (°C), 10 Sep 2017



6:29 AM - 13 Sep 2017

ACTUAL SEA SURFACE TEMP ANOMALIES – of all 4 regions.. **LA NINA NOW HOLDING**

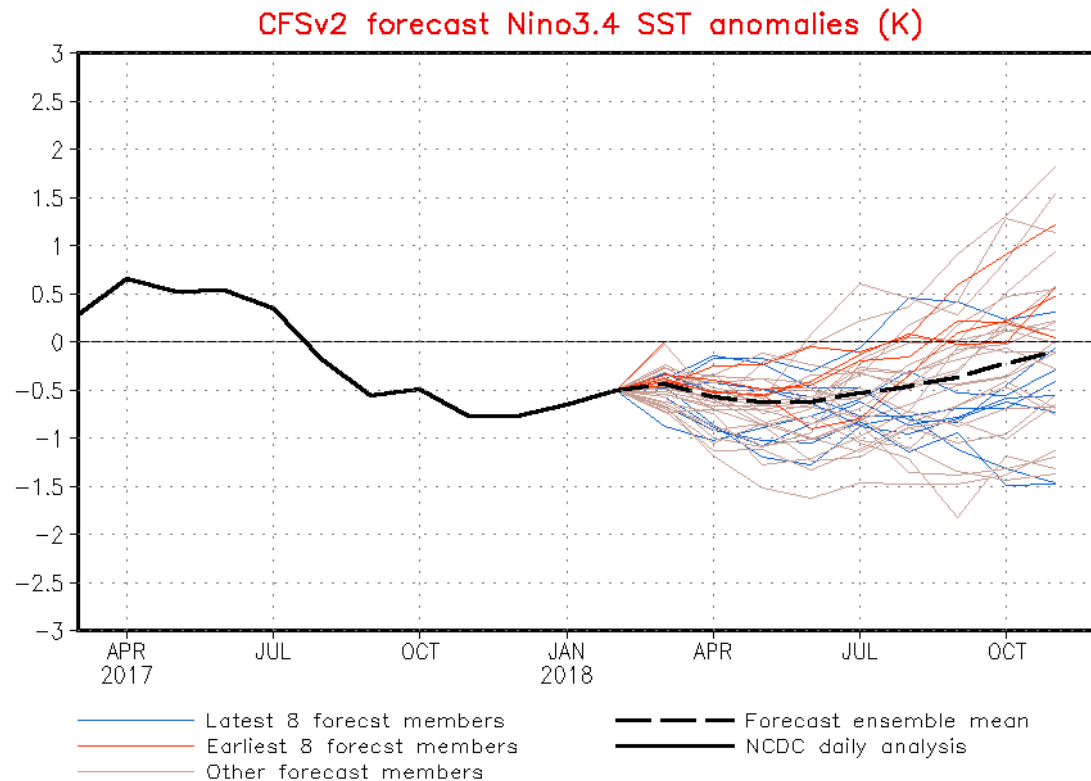


LATEST CFS MODEL PROJECTION = ** La Nina NEVER reaches threshold for MODERATE but stays weak into MAY / JUNE... Prolonging dry pattern into at least part of SPRING 2018



NWS/NCEP/CPC

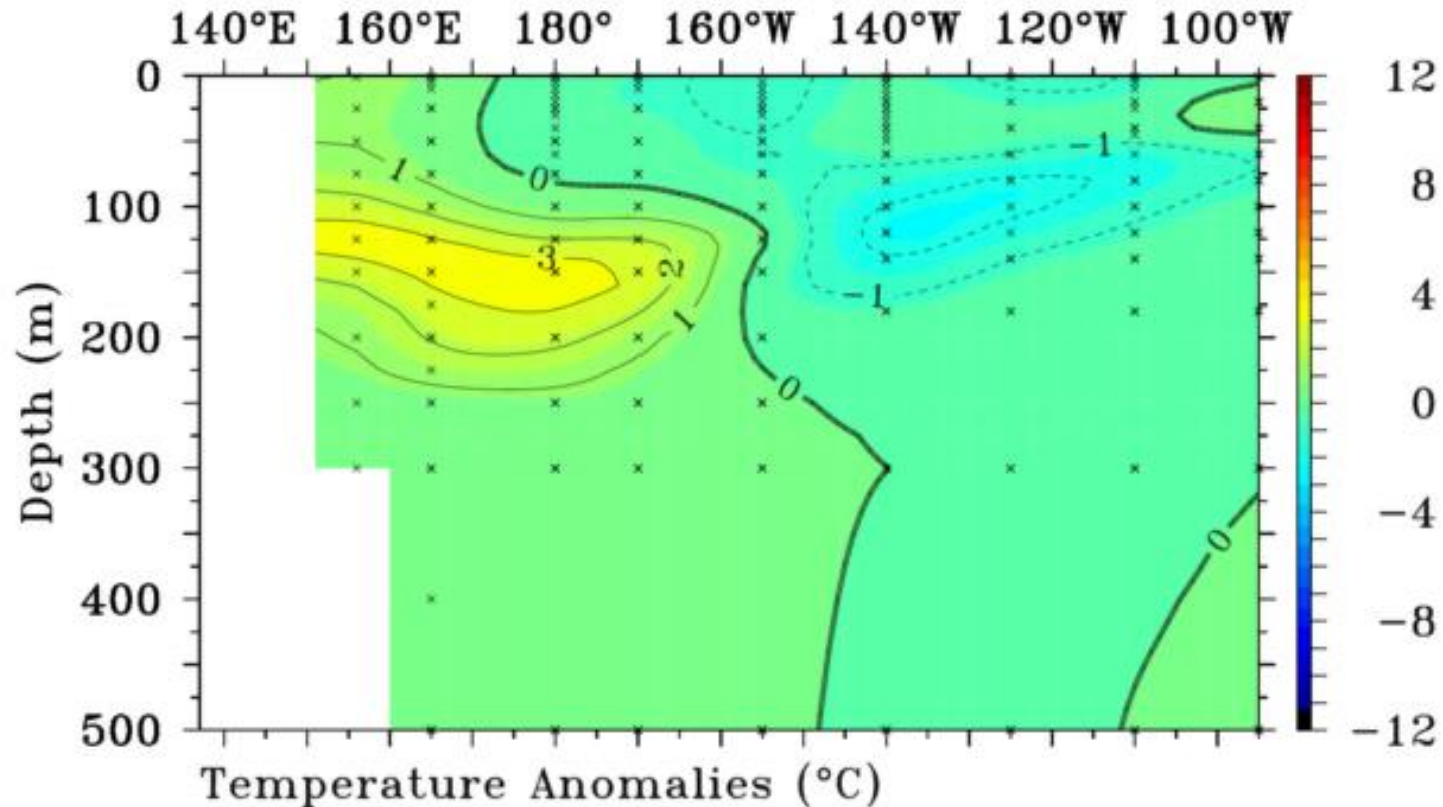
Last update: Thu Feb 15 2018
Initial conditions: 26Jan2018-4Feb2018



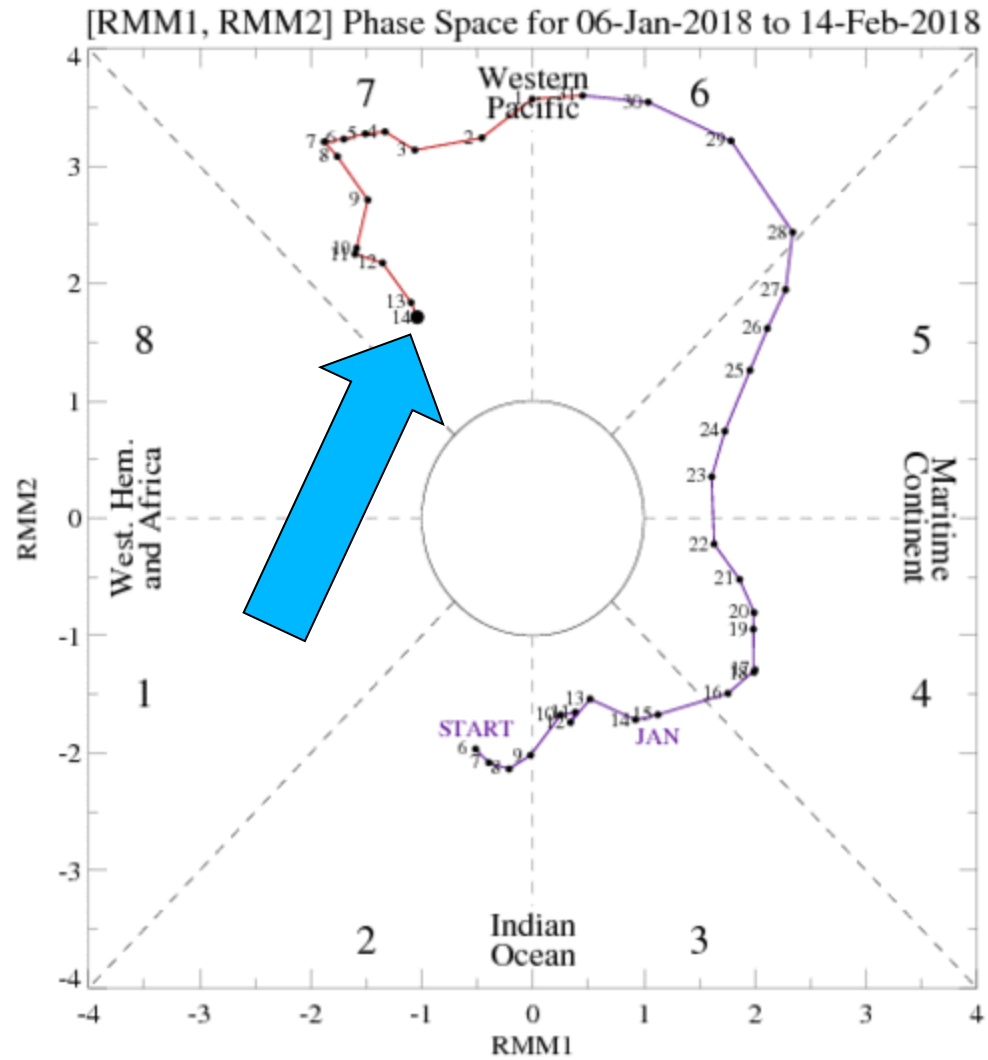
LOOKING BENEATH THE SURFACE ALONG EQUATORIAL PACIFIC ...WEAK LA NINA HOLDING ON

Five-Day Data

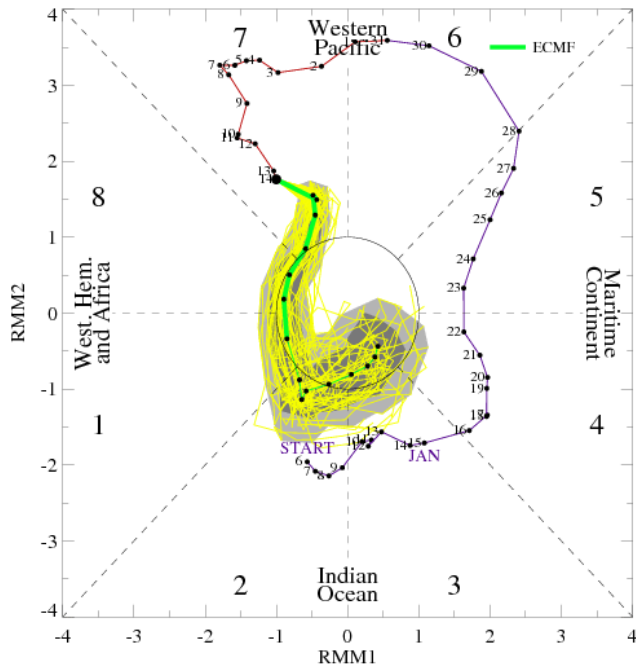
Ending On February 14 2018 2°S to 2°N Average



MJO IS IN PHASE 7

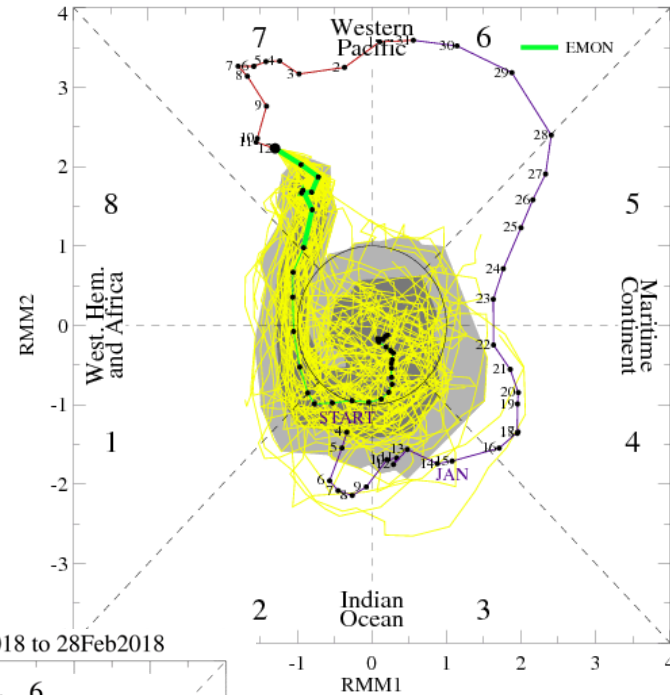


MJO Index Forecast for 15Feb2018-01Mar2018



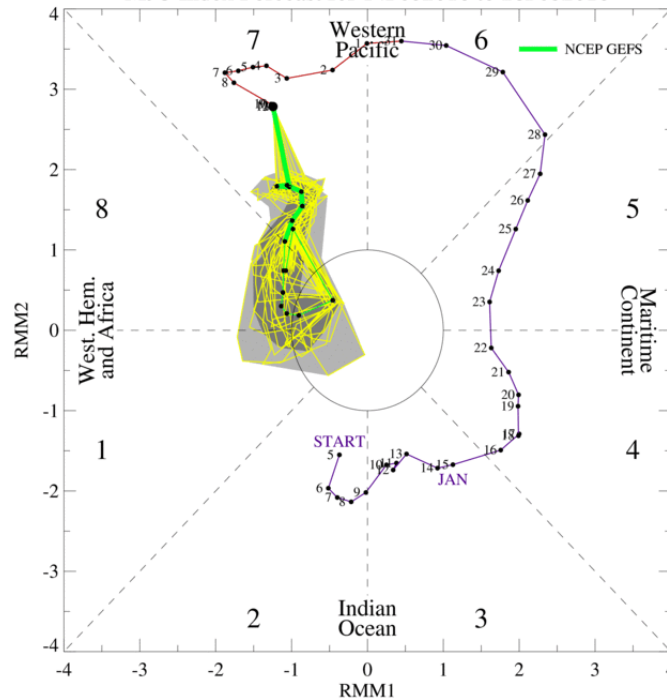
ALL MODELS
shows MJO
weakening
FAST & heading
towards
Neutral Circle.
MJO may
briefly into
Phase 8

MJO Index Forecast for 13Feb2018-16Mar2018



this implies a more
favorable pattern
may develop over
ARG by Mid March
but La Nina still there

MJO Index Forecast for 14Feb2018 to 28Feb2018

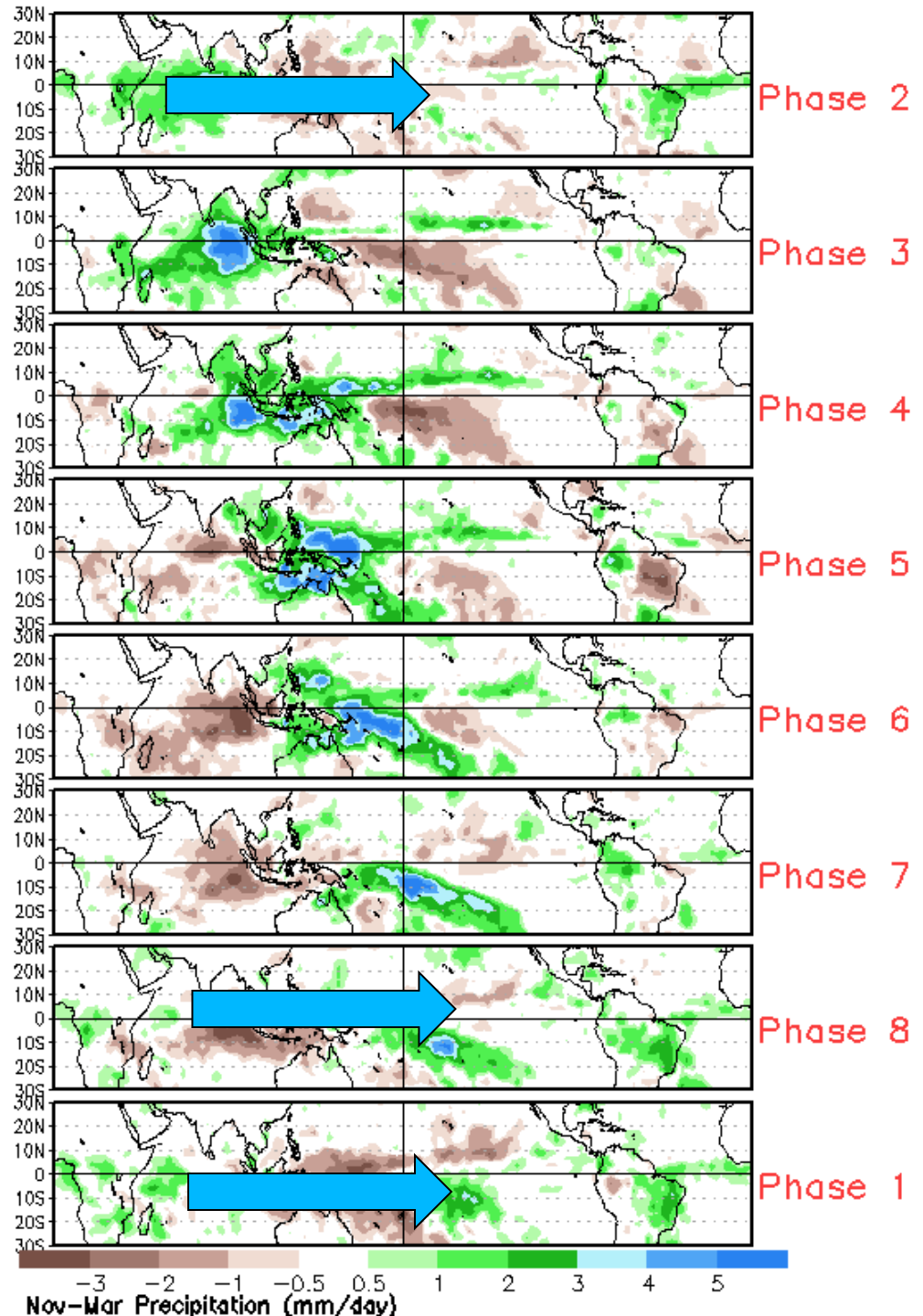


**PHASE 7 west
BRAZIL TURNS
WET NORMAL
RAINS OVER
ARG**

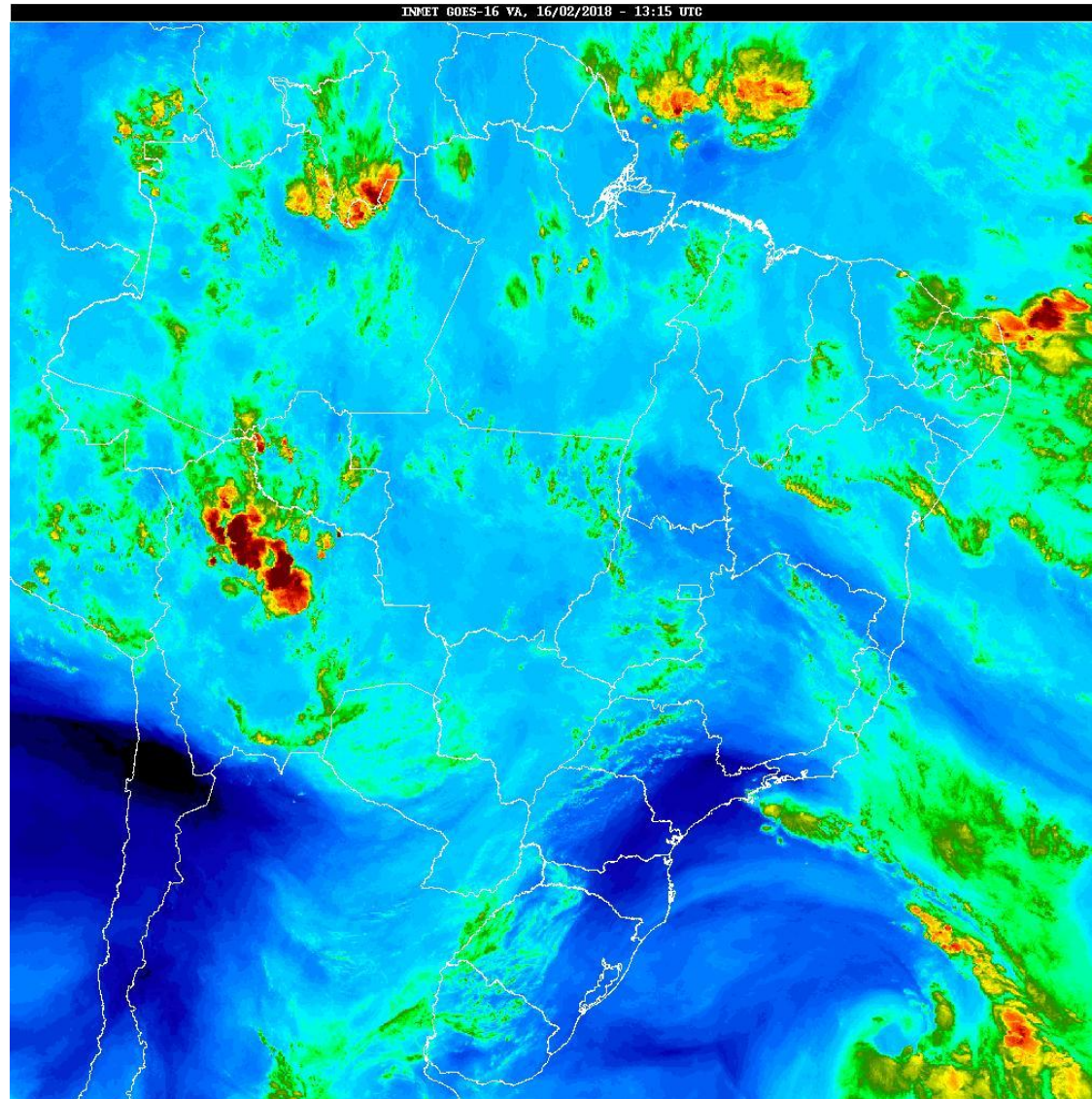
PHASE 8

PHASE 1

PHASE 2

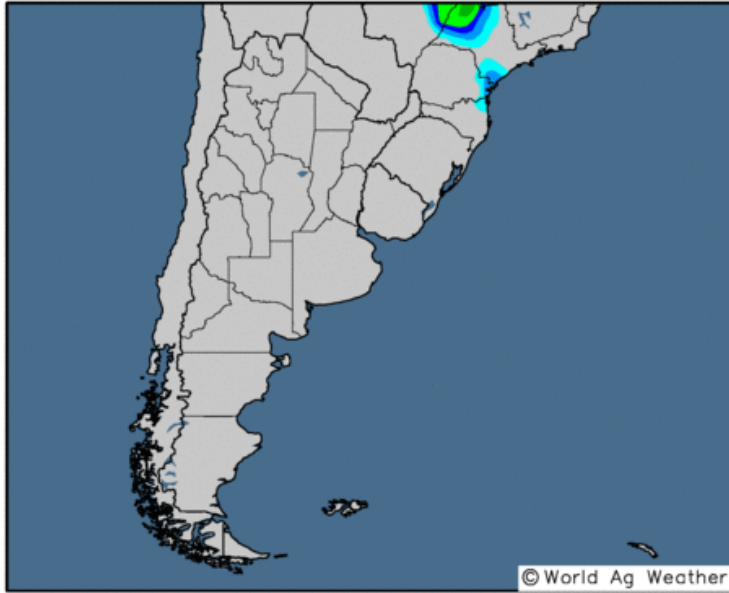


**MID FRI
MORNING INFRA
RED SATELLITE**



24-hour Precipitation Analysis

Observed precipitation (inches) through 12 UTC 14 Feb 2018



0.1 0.25 0.5 0.75 1 1.5 2 2.5 3 4 5 6 8 10

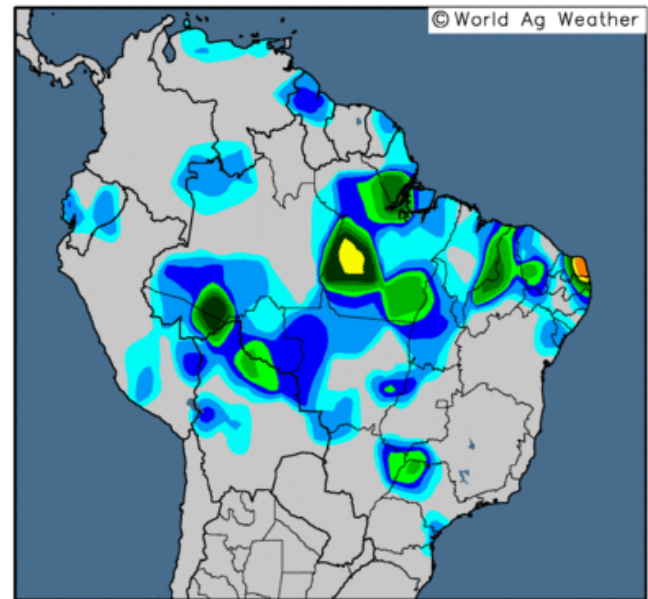
Map updates daily by approximately 20:30 UTC

RAINFALL

FEB 14-15

24-hour Precipitation Analysis

Observed precipitation (inches) through 12 UTC 14 Feb 2018



0.1 0.25 0.5 0.75 1 1.5 2 2.5 3 4 5 6 8 10

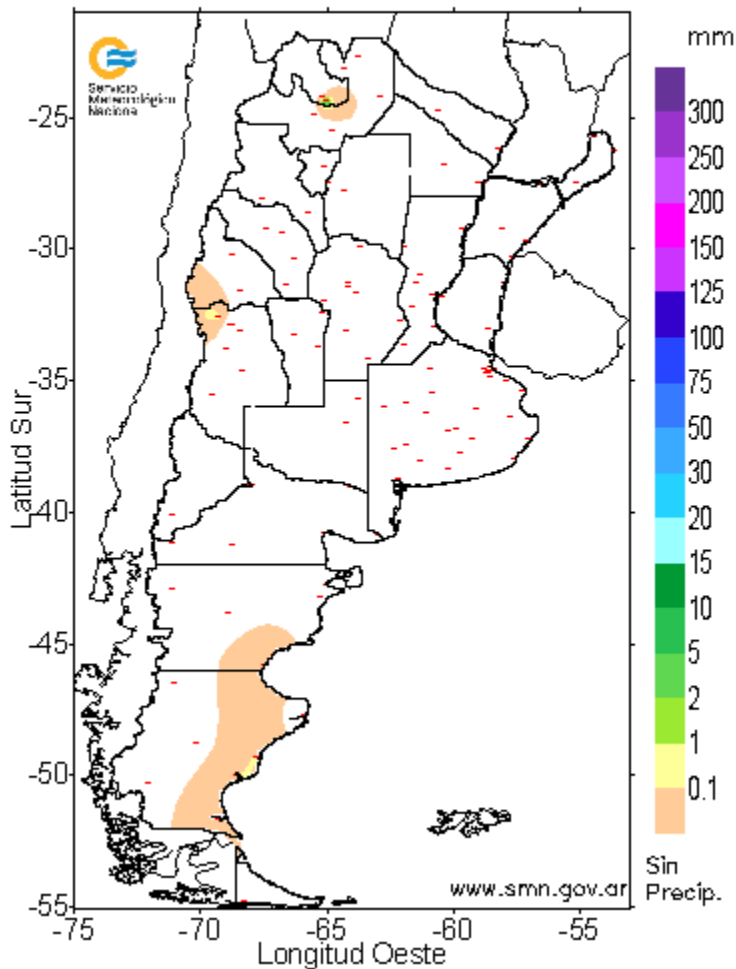
Map updates daily by approximately 20:30 UTC

PRECIP FEB 15 IN AG & BRAZIL - pretty darn dry even over Brazil

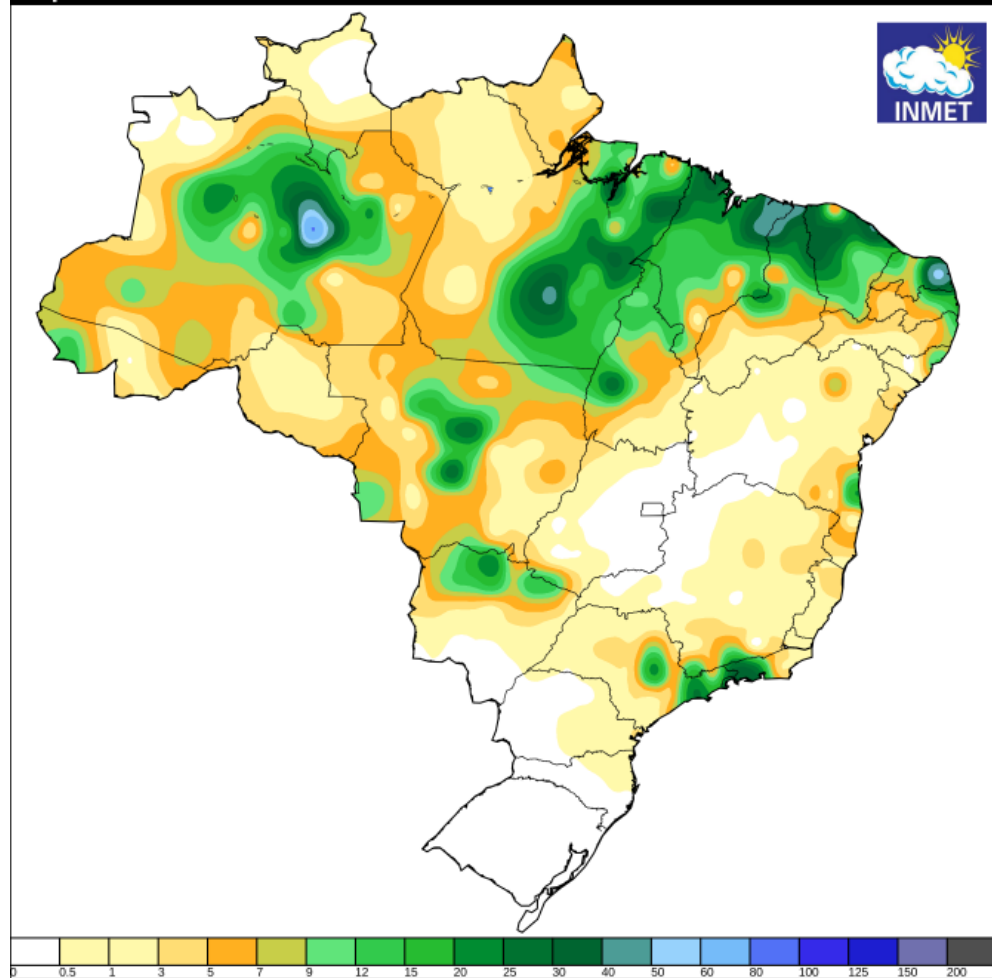
Servicio Meteorológico Nacional

PRECIPITACION (EN MILIMETROS) ACUMULADA EN 24 HORAS

Los valores corresponden al periodo comprendido entre las
9 hs. del 14/02/2018 y las 9 hs. del 15/02/2018

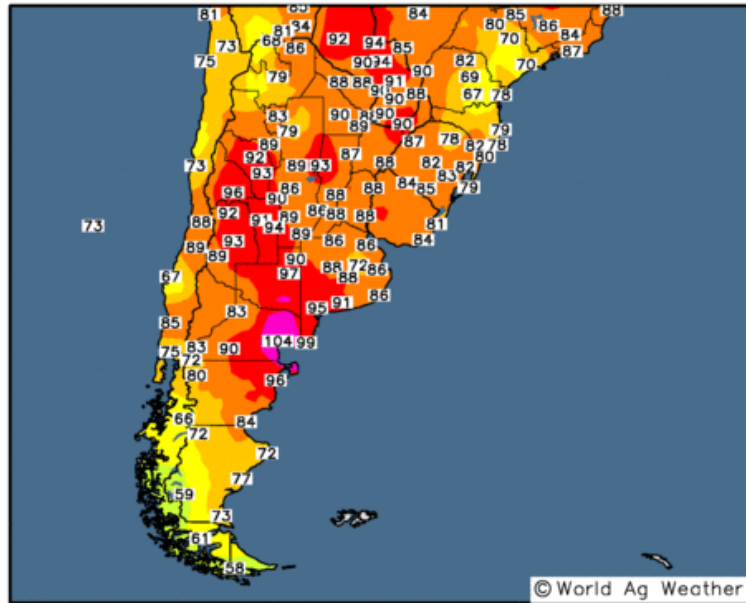


Instituto Nacional de Meteorologia - INMET
Precipitação Acumulada em 24 horas
Mapa do dia 15/02/2018



Observed Maximum Temperature (°F)

14 Feb 2018



-30 -20 -10 0 10 20 25 30 35 40 50 60 70 80 90 100

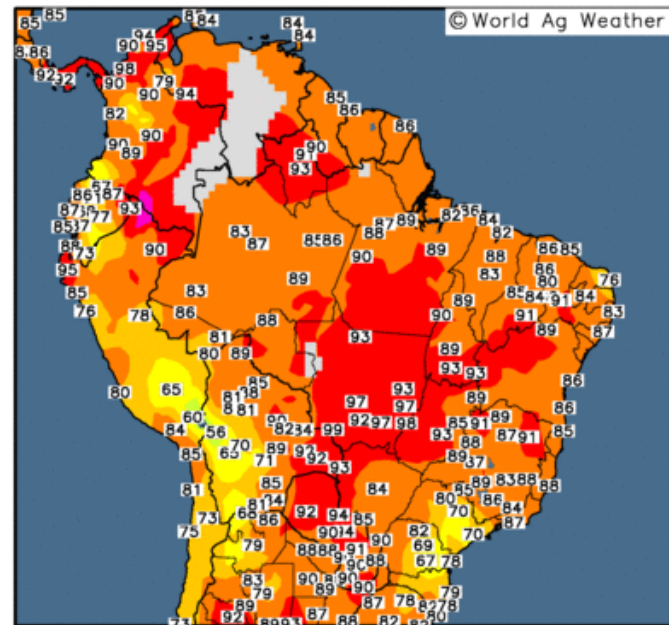
Map updates daily by approximately 16:00 UTC

**FEB 14 MAX
TEMPS Brazil**

**FEB 14 MAX
TEMPS ARG
95-104F/ 34-40c**

Observed Maximum Temperature (°F)

14 Feb 2018



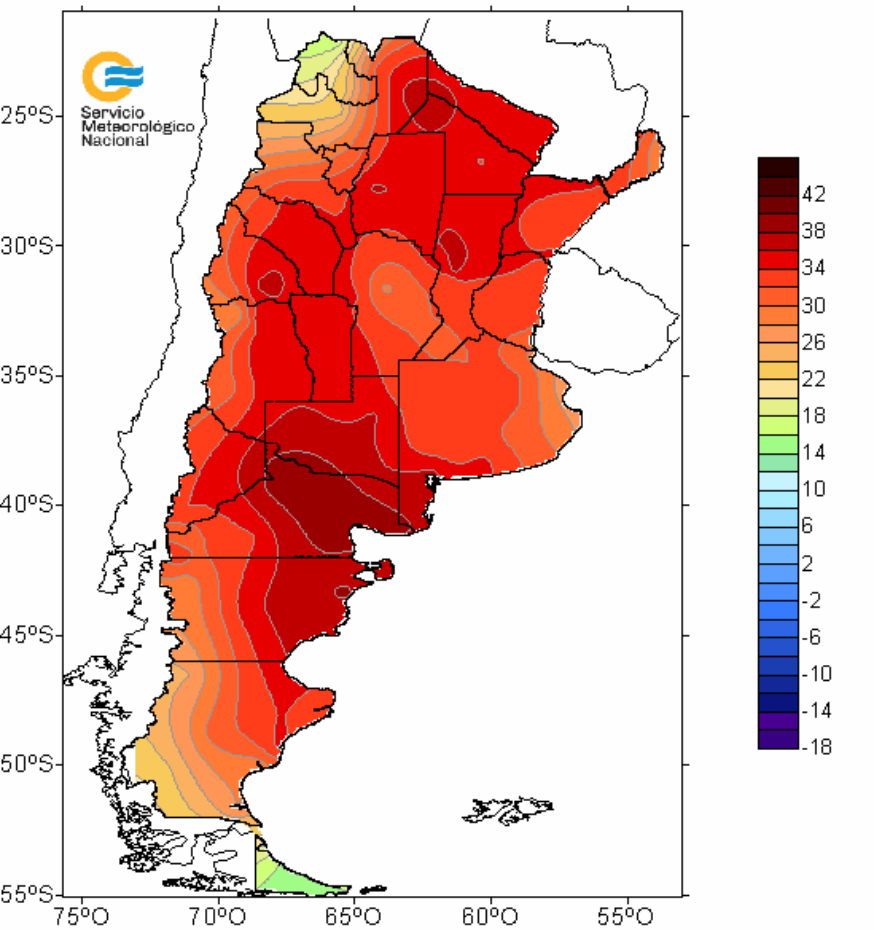
-30 -20 -10 0 10 20 25 30 35 40 50 60 70 80 90 100 110

Map updates daily by approximately 16:00 UTC

MAZ TEMP FEB 15 IN AG & BRAZIL - 34-38c/ 94-100f

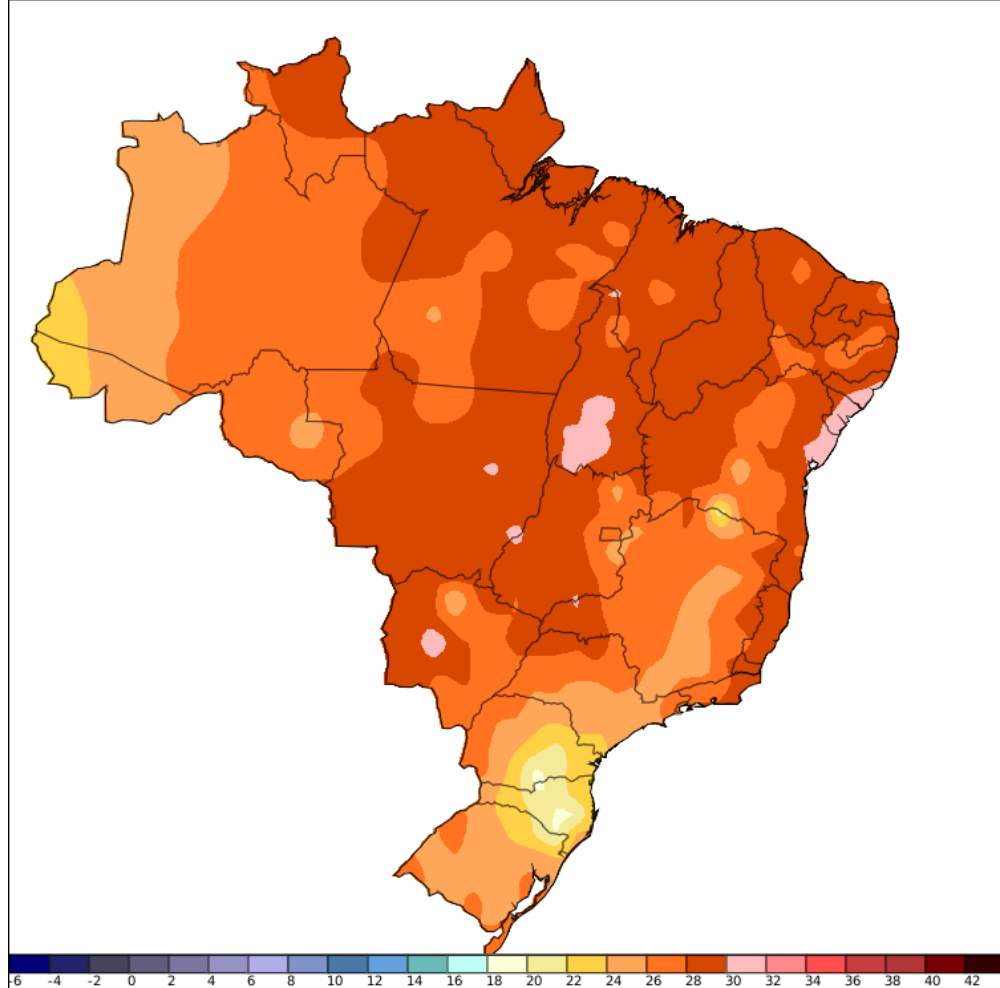
TEMPERATURAS MAXIMAS

15 de Febrero de 2018



Servicio Meteorológico Nacional

Instituto Nacional de Meteorologia - INMET
Temperatura Máxima (°C)
Informações Sinóticas do dia 16/02/2018 às 13:00 UTC



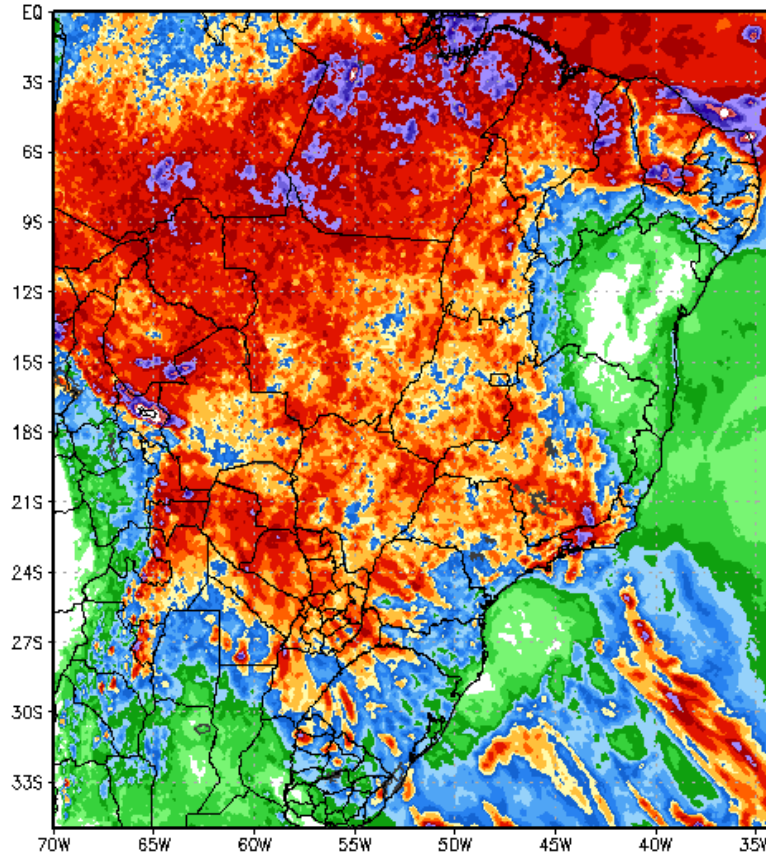
TOTAL RAINFALL FROM EURO NEXT 7 DAYS

174 Hour Total Precipitation (in)

Valid: 00z Fri 16 Feb 2018 - 06z Fri 23 Feb 2018

ECMWF-MAXRES

Hour: 0 - 174



Max: 25.6 in
Min: 0.0 in

StormVistaWxModels.com

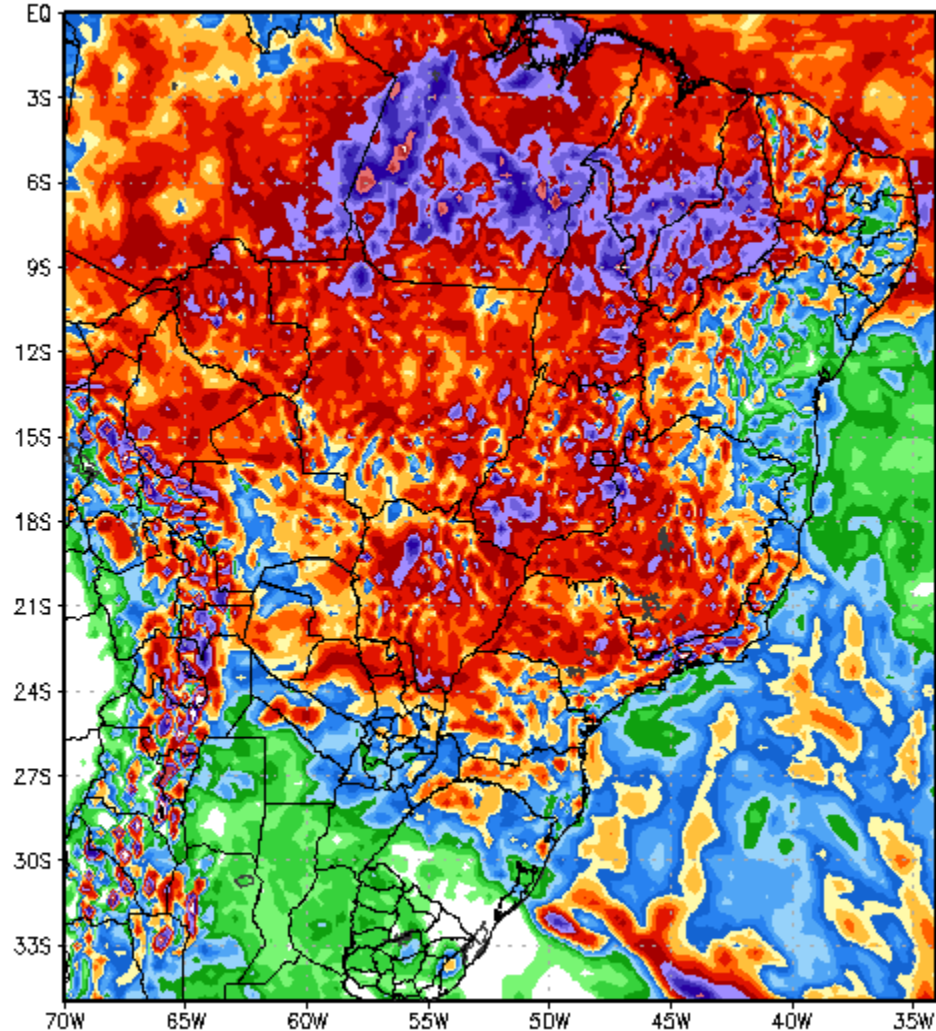
Init: 00z Fri 16 Feb 2018
2018-02-16-07:22

TOTAL RAINFALL FROM GFS NEXT 7 DAYS

174 Hour Total Precipitation (in)

Valid: 00z Fri 16 Feb 2018 - 06z Fri 23 Feb 2018

GFS-MAXRES
Hour: 0 - 174



Max: 25.4 in
Min: 0.0 in

StormVistaWxModels.com

Init: 00z Fri 16 Feb 2018
2018-02-16-04:22

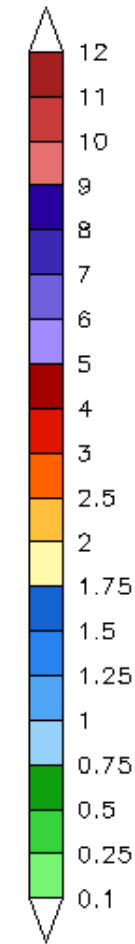
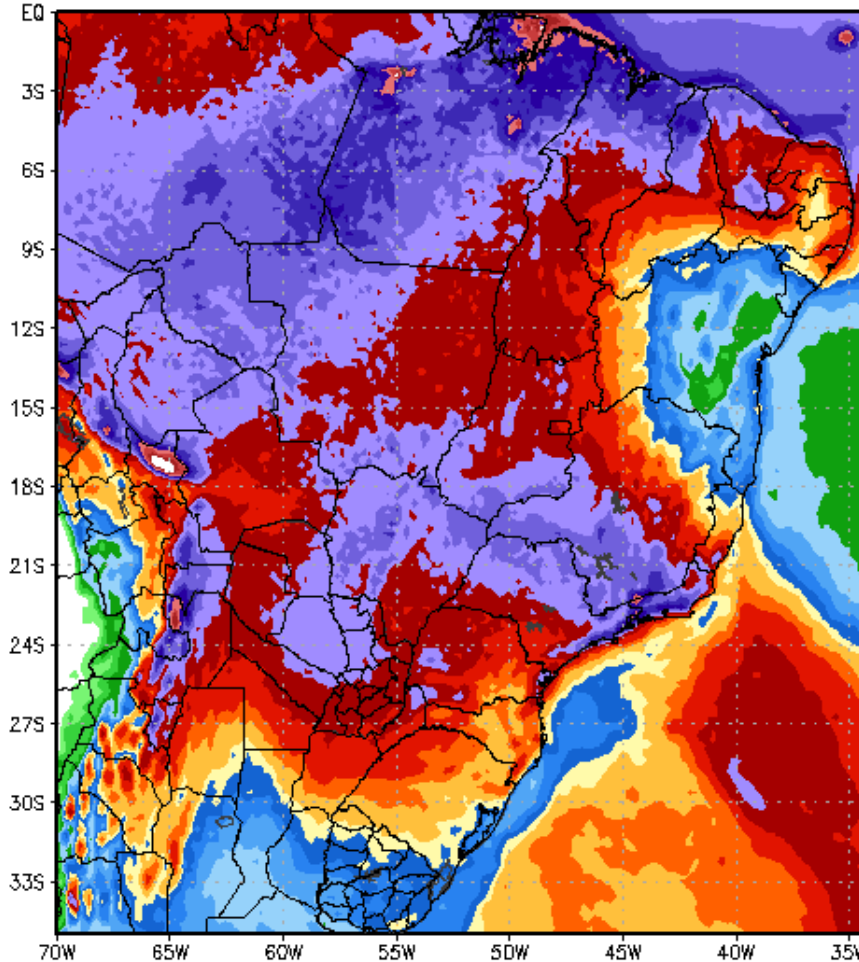
TOTAL RAINFALL FROM EURO ENSEMBLE NEXT 14 DAYS

360 Hour Total Precipitation (in)

Valid: 00z Fri 16 Feb 2018 - 00z Sat 03 Mar 2018

ECMWF-EPS-MAXRES

Hour: 0 - 360



Max: 14.3 in
Min: 0.0 in

StormVistaWxModels.com

Init: 00z Fri 16 Feb 2018
2018-02-16-09:10

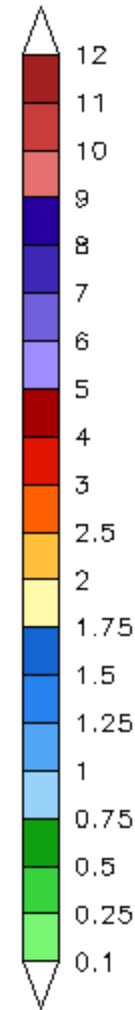
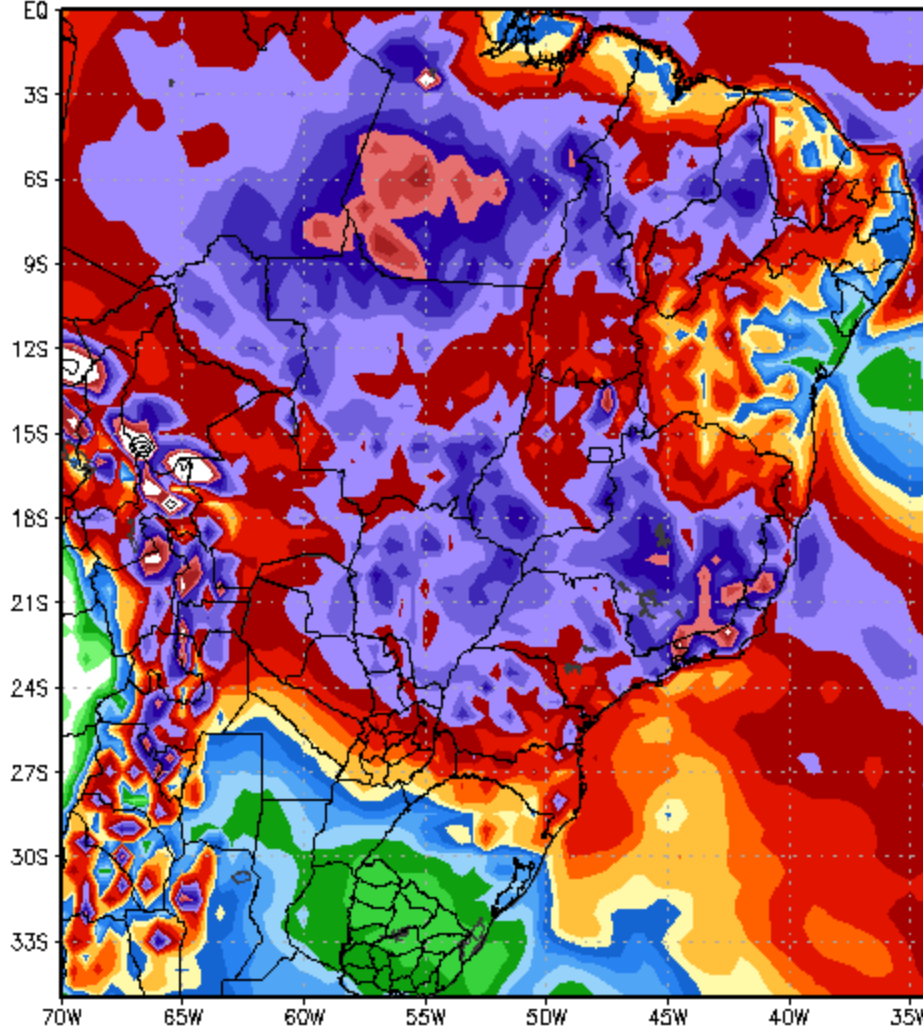
TOTAL RAINFALL FROM GFS ENSEMBLE NEXT 14 DAYS

360 Hour Total Precipitation (in)

Valid: 00z Fri 16 Feb 2018 - 00z Sat 03 Mar 2018

GFS-ENS-MAXRES

Hour: 0 - 360



Max: 29.4 in
Min: 0.0 in

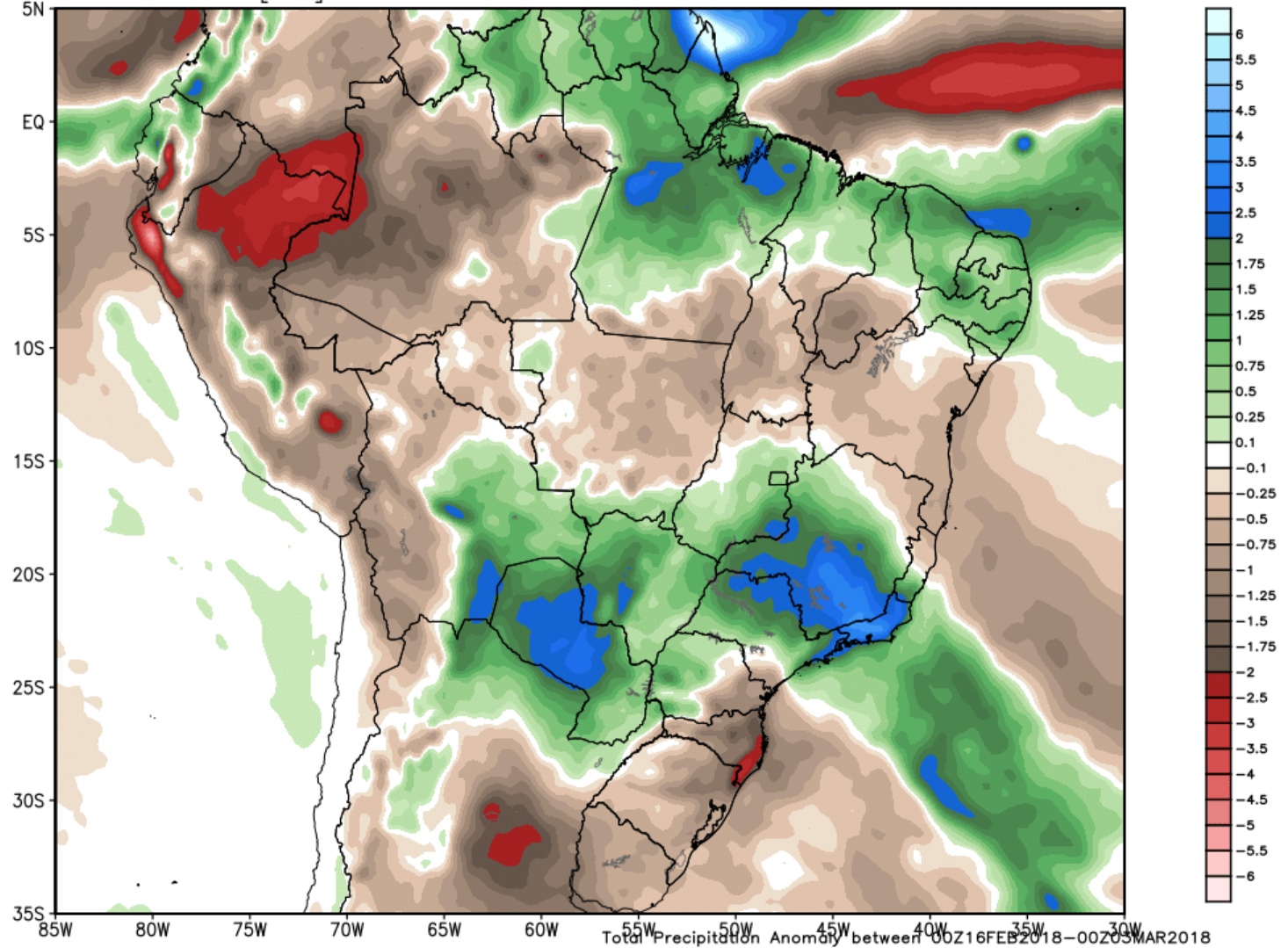
StormVistaWxModels.com

Init: 00z Fri 16 Feb 2018
2018-02-16-05:33

PRECIP ANOMALIES OVER NEXT 2 WEEK ...

ECMWF EPS Ensemble Mean Total Precipitation Anomaly [inches]
Init: 00Z16FEB2018 -- [360] hr --> Valid thru Sat 00Z03MAR2018

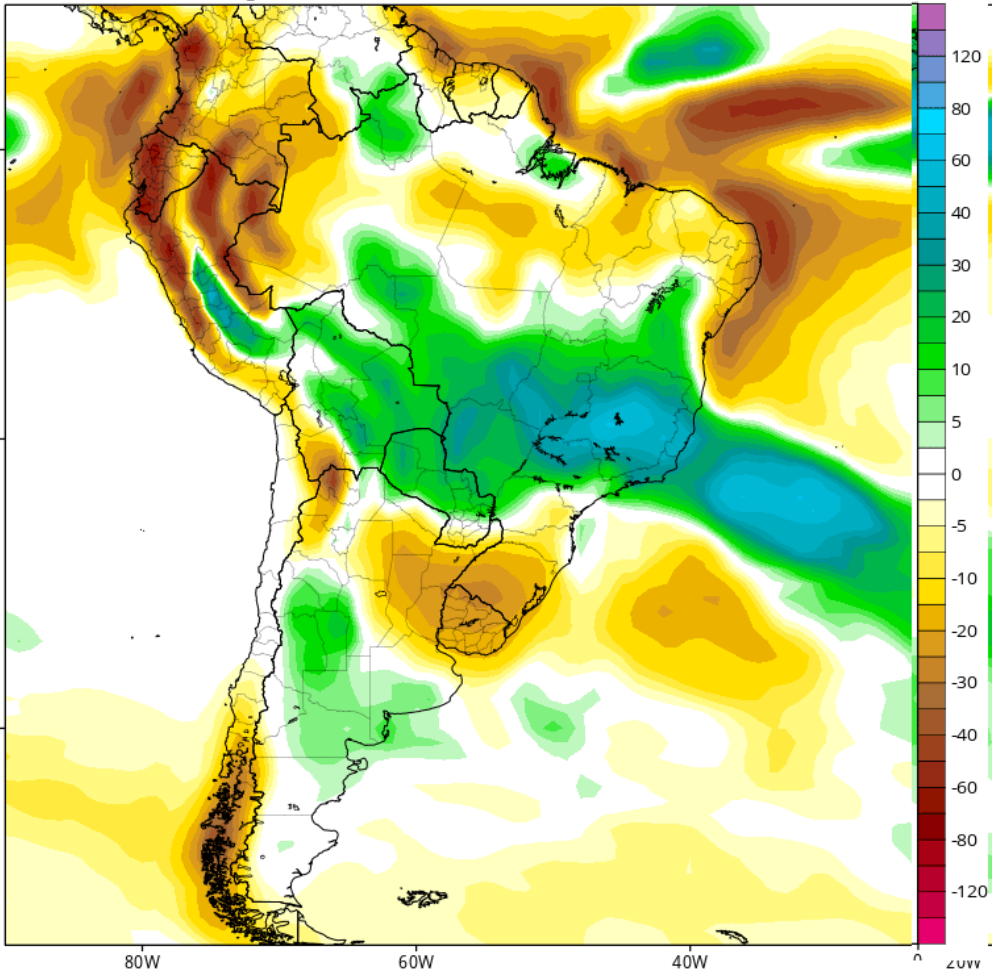
Min|Max: -9.9 | 10.6 inch



CFSv2 Accumulated Precip. Anomaly (mm) from 00z23Feb2018 to 00z02Mar2018 (Days 8-14)

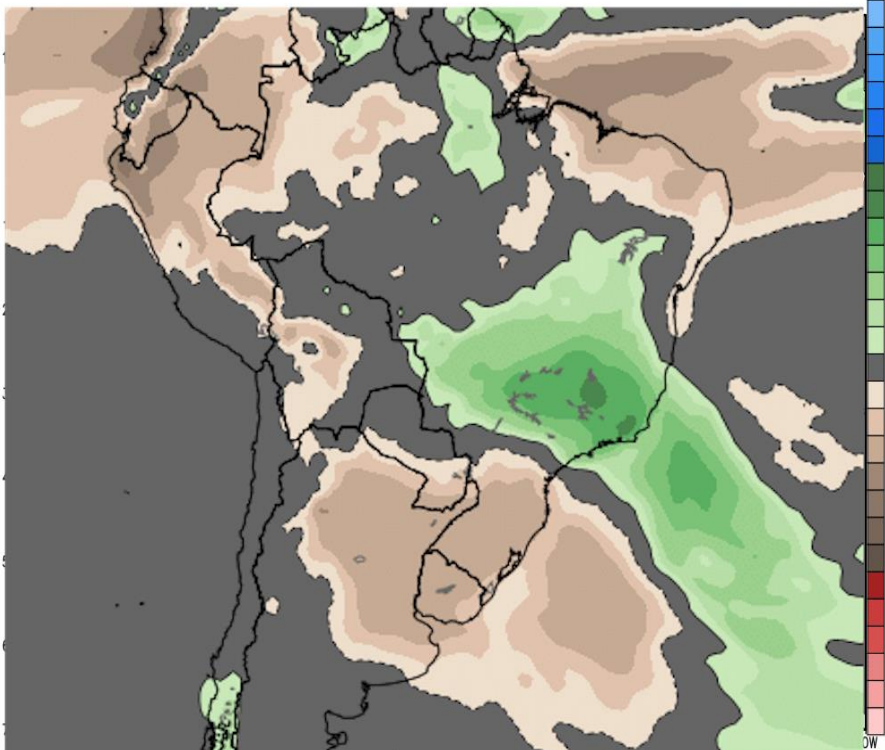
Average of last 48 forecasts (12 runs x 4 members)

Init: 06z Feb 13 2018 through 00z Feb 16 2018



WEEK 2 RAINFALL ANOMALIES

ECMWF EPS Ensemble Mean 7-day Avg Precipitation Anomaly [inch]
Init: 00Z15FEB2018 -- [168] hr --> Valid on Thu 00Z01MAR2018 Day 0 - Day 7
Min|Max Anom: -2.7 | 3.3 inch

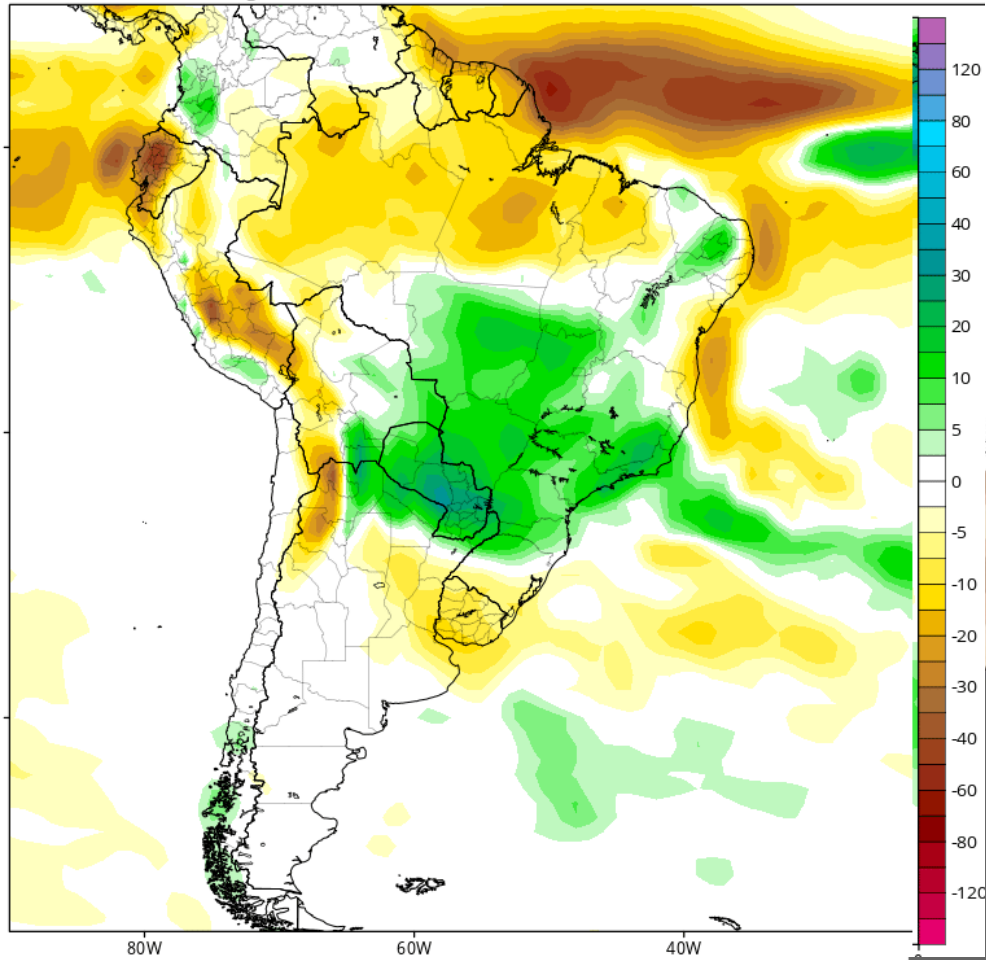


Accumulation between 00Z22FEB2018-00Z01MAR2018 | ECMWF EPS 1997-2016 Hindcast Climatology

CFSv2 Accumulated Precip. Anomaly (mm) from 00z02Mar2018 to 00z09Mar2018 (Days 15-21)

Average of last 48 forecasts (12 runs x 4 members)

Init: 06z Feb 13 2018 through 00z Feb 16 2018

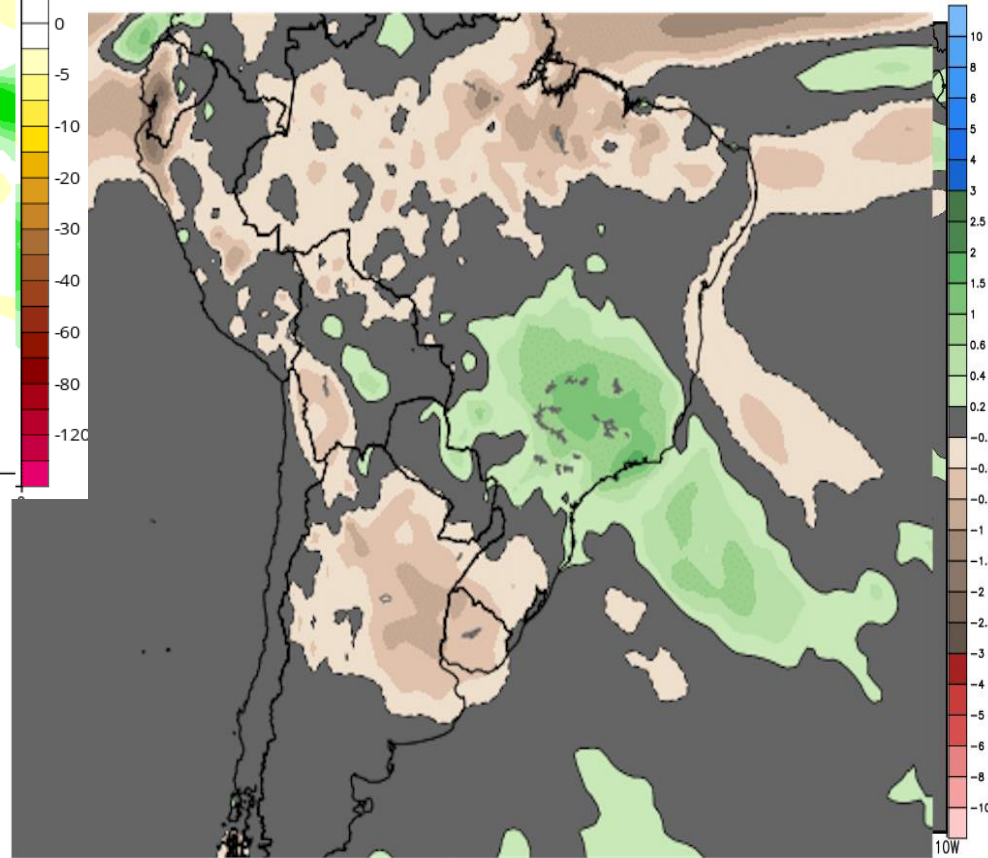


WEEK 3 RAINFALL ANOMALIES

EPS Ensemble Mean 7-day Avg Precipitation Anomaly [inch]

Z15FEB2018 -- [252] hr --> Valid on Thu 00Z08MAR2018 Day 3.5 - Day 10.5

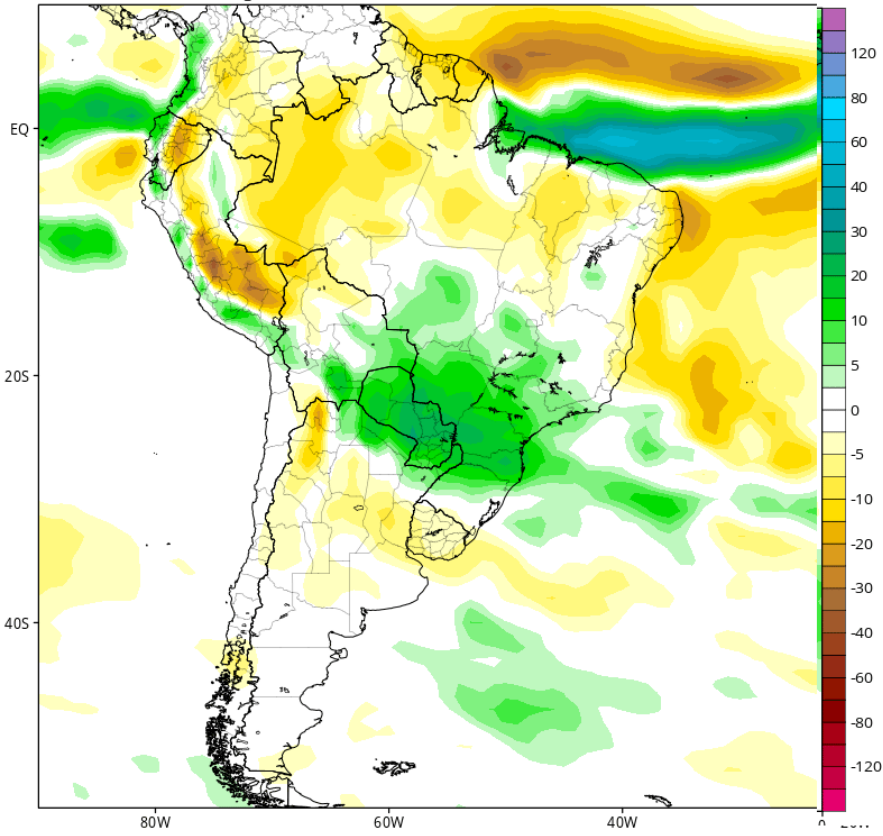
Min|Max Anom: -7.2 | 3.0 inch



CFSv2 Accumulated Precip. Anomaly (mm) from 00z09Mar2018 to 00z16Mar2018 (Days 22-28)

Average of last 48 forecasts (12 runs x 4 members)

Init: 06z Feb 13 2018 through 00z Feb 16 2018

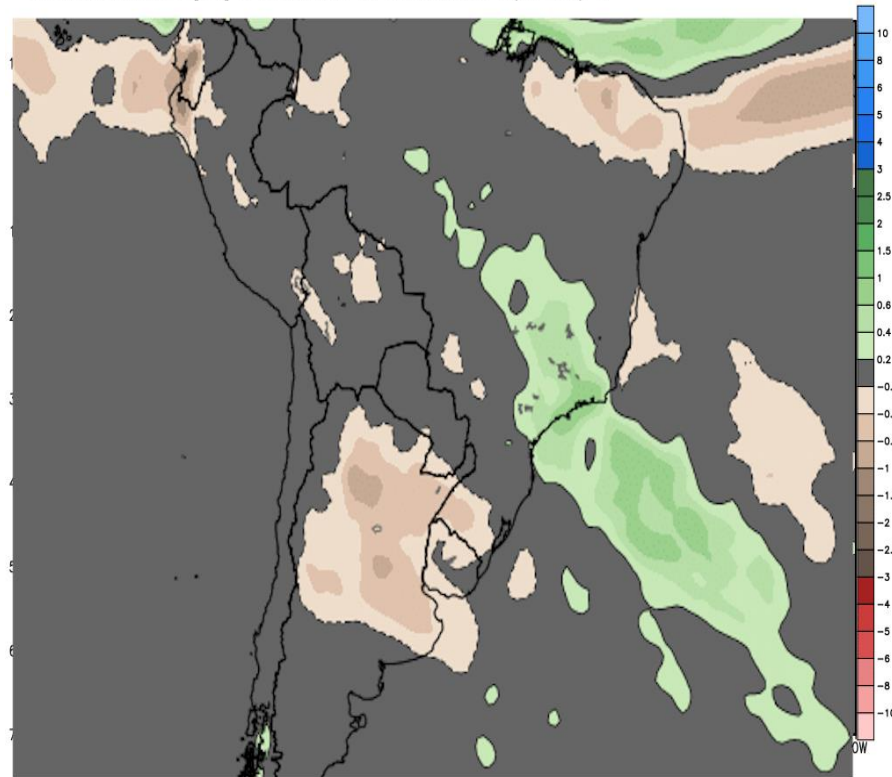


WEEK 4 RAINFALL ANOMALIES

ECMWF EPS Ensemble Mean 7-day Avg Precipitation Anomaly [inch]

Init: 00Z15FEB2018 -- [336] hr --> Valid on Thu 00Z15MAR2018 Day 7 - Day 14

Min|Max Anom: -3.1 | 2.9 inch



CFSv2 Total Accumulated Precipitation Anomaly (mm)

Average of last 12 forecasts (12 runs x 1 members)

Init: 00z Feb 13 2018 through 18z Feb 15 2018

Valid for: Mar 2018

