

**S.AMERICA
GRAIN WEATHER
ISSUES**

**as of FRIDAY
5 JANUARY 2018**



LOCATED in Richmond VA

Featured frequently on AGRI-MONEY

EMAIL WXRISK@VERZION .NET



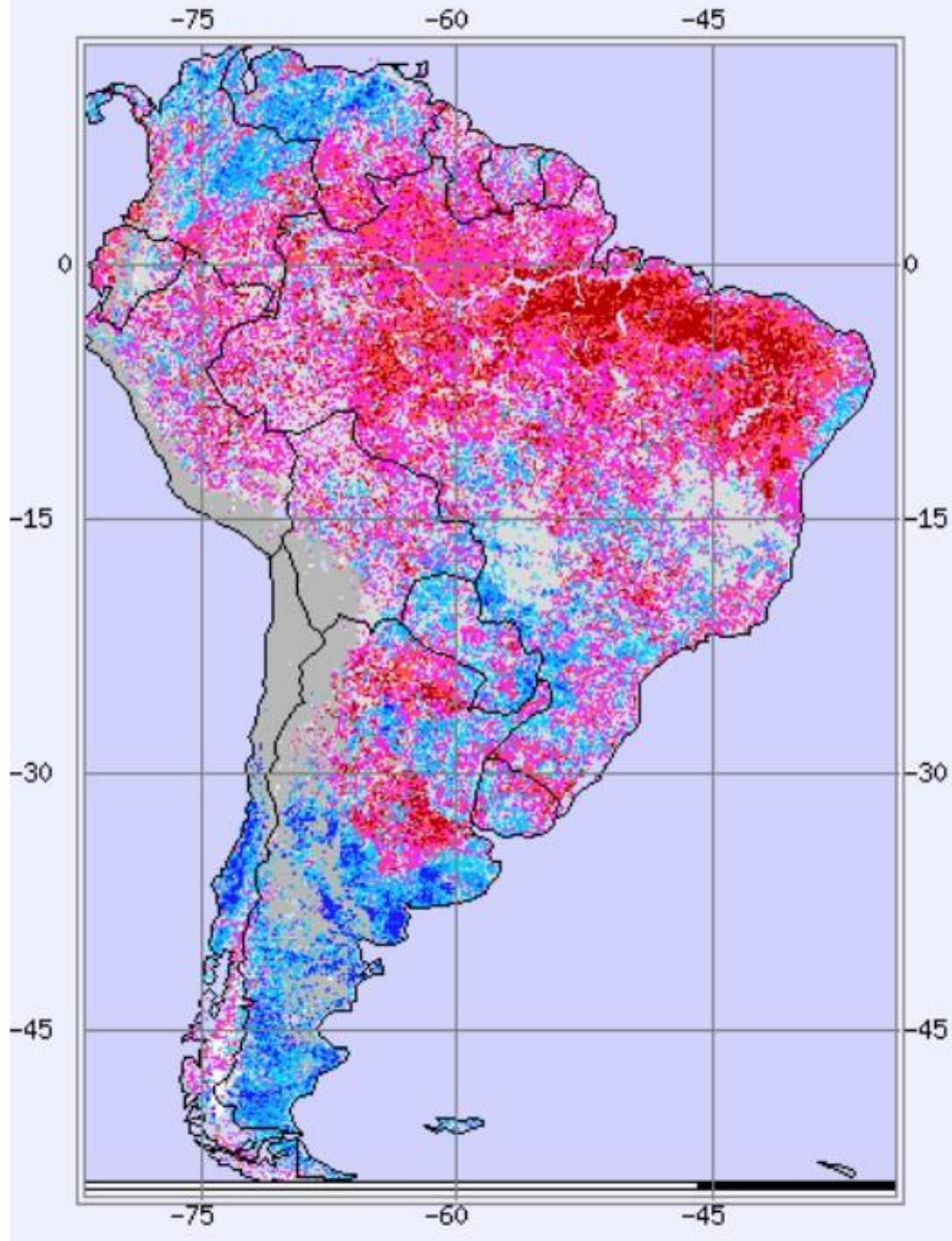
@WXRISK.COM



<https://www.facebook.com/WxRisk>

wxrisk@gmail.com

Dec. 30, 2017 (week 52)

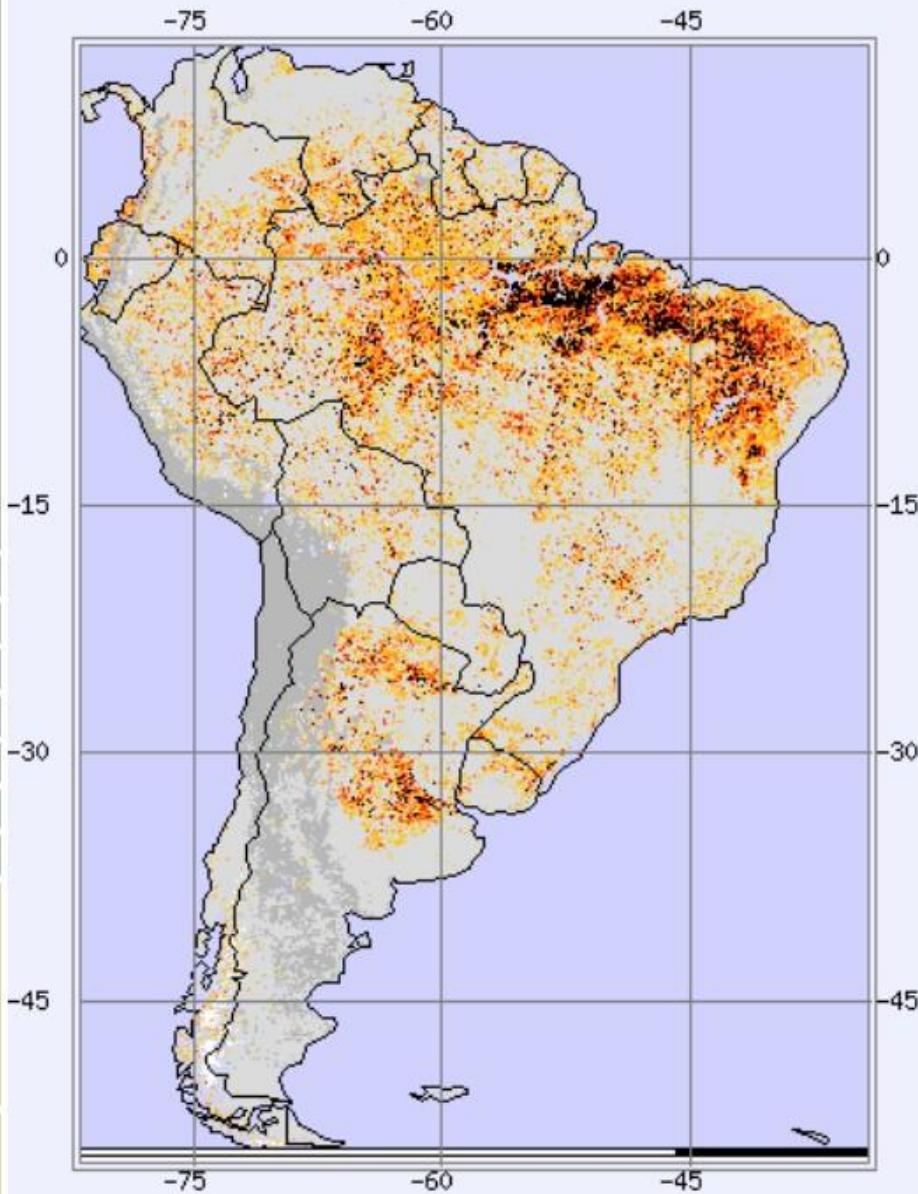


**DROUGHT
CONDITIONS
OVER MOST OF
PLAINS / DELTA
WORSENING
WEEKLY**



South America - Drought-Related Stress, 2017 week 52

Dec. 30, 2017 (week 52)



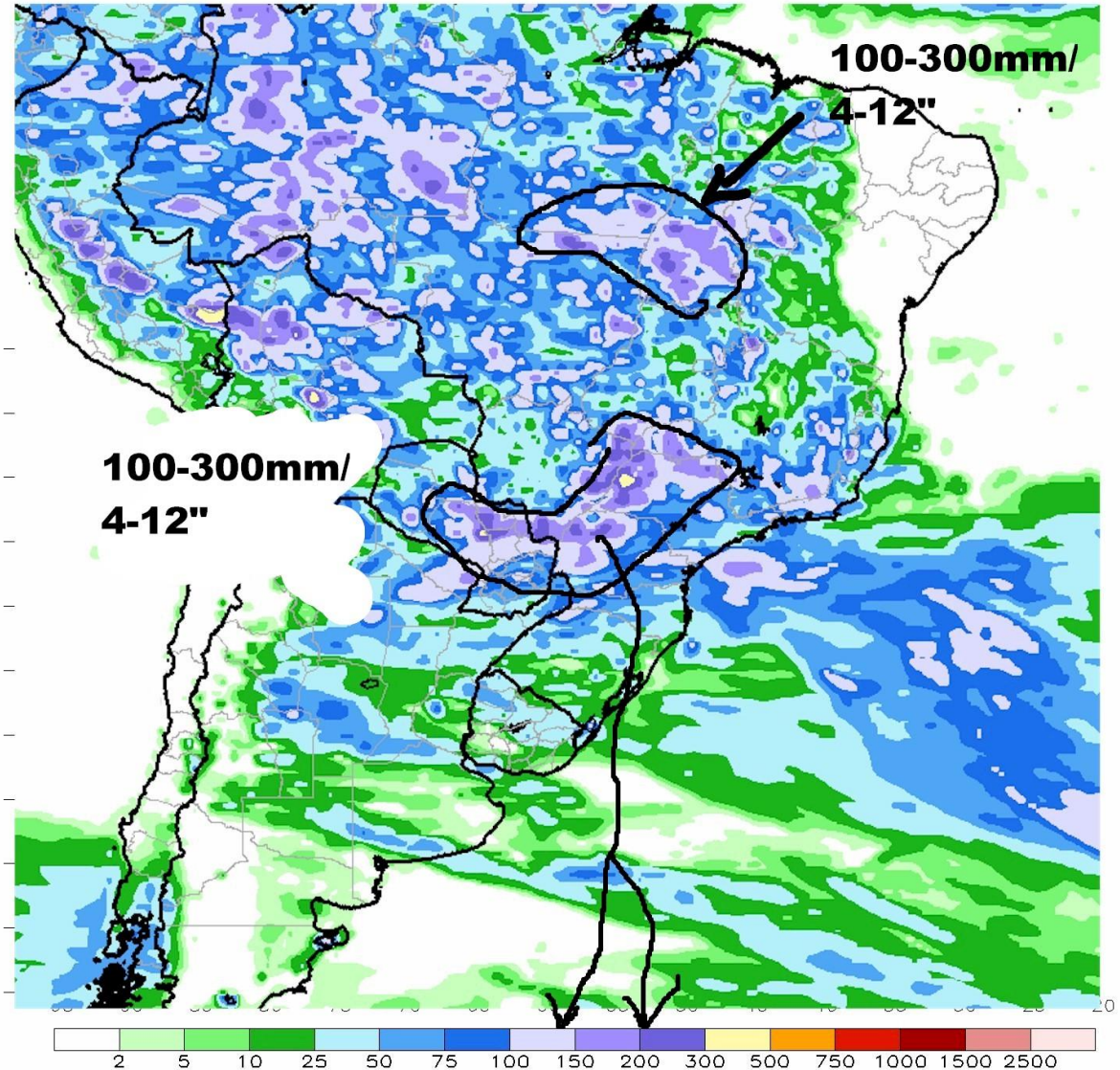
US DROUGHT CONDITIONS SINCE NOVEMBER 14

SA ACTUAL ANOMALIES LAST 10 DAYS

CMORPH 10-Day Total Rainfall (mm)

Period: 25Dec2017 - 03Jan2018

GOOD RAINS
eastern
PARAGUAY into
se MGDS
western **SAO**
PAULO & north
TOCATINS

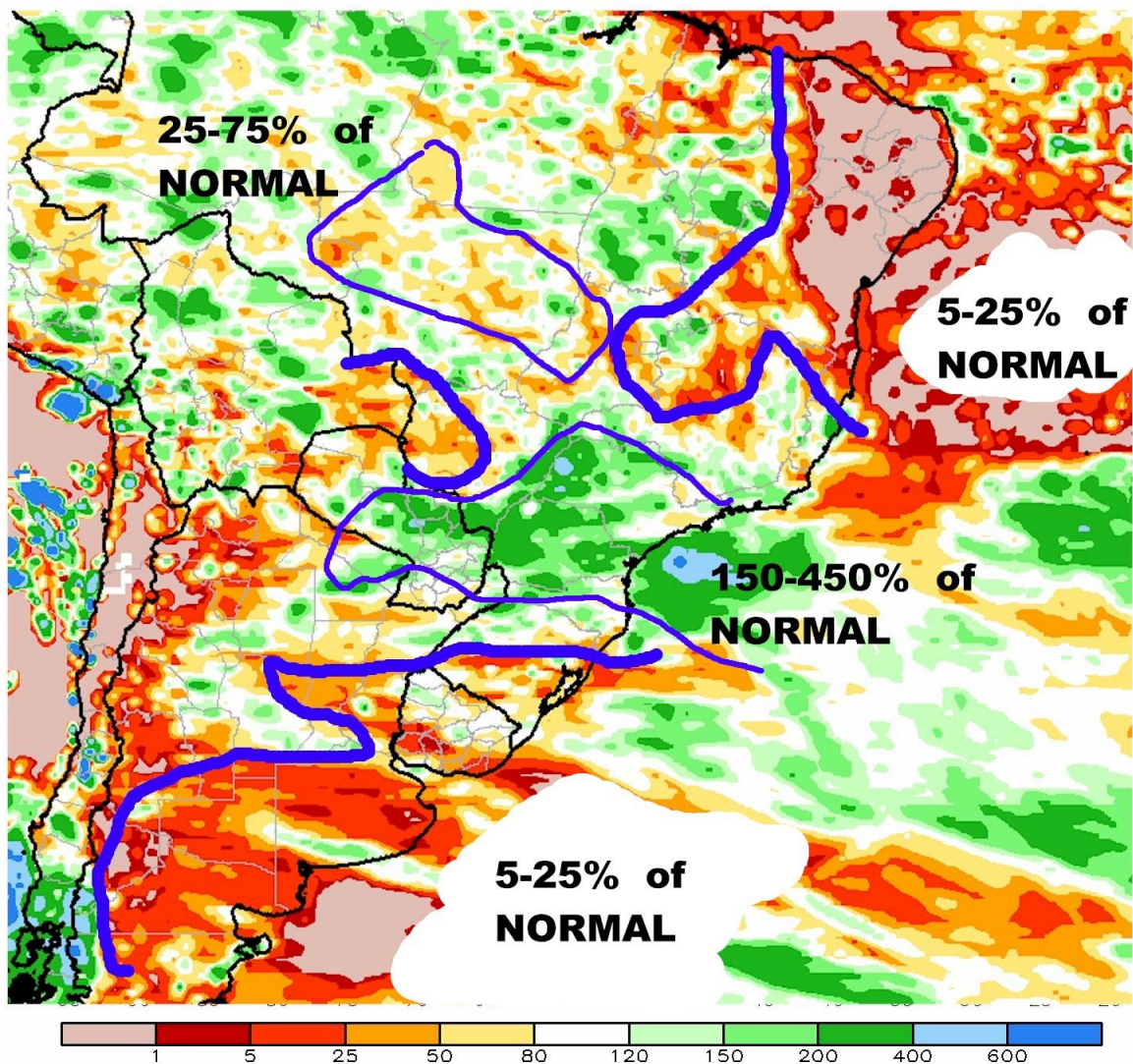


SA PRECIP ANOMALIES LAST 10 DAYS

CMORPH 10-Day Percent of Normal Rainfall (%)

Period: 25Dec2017 - 03Jan2018

VERY DRY most
of ARG and ne
Brazil ... **DRY-ish**
over Mato
Grosso **WET**
over eastern
PARG MGDS
Sao Paulo

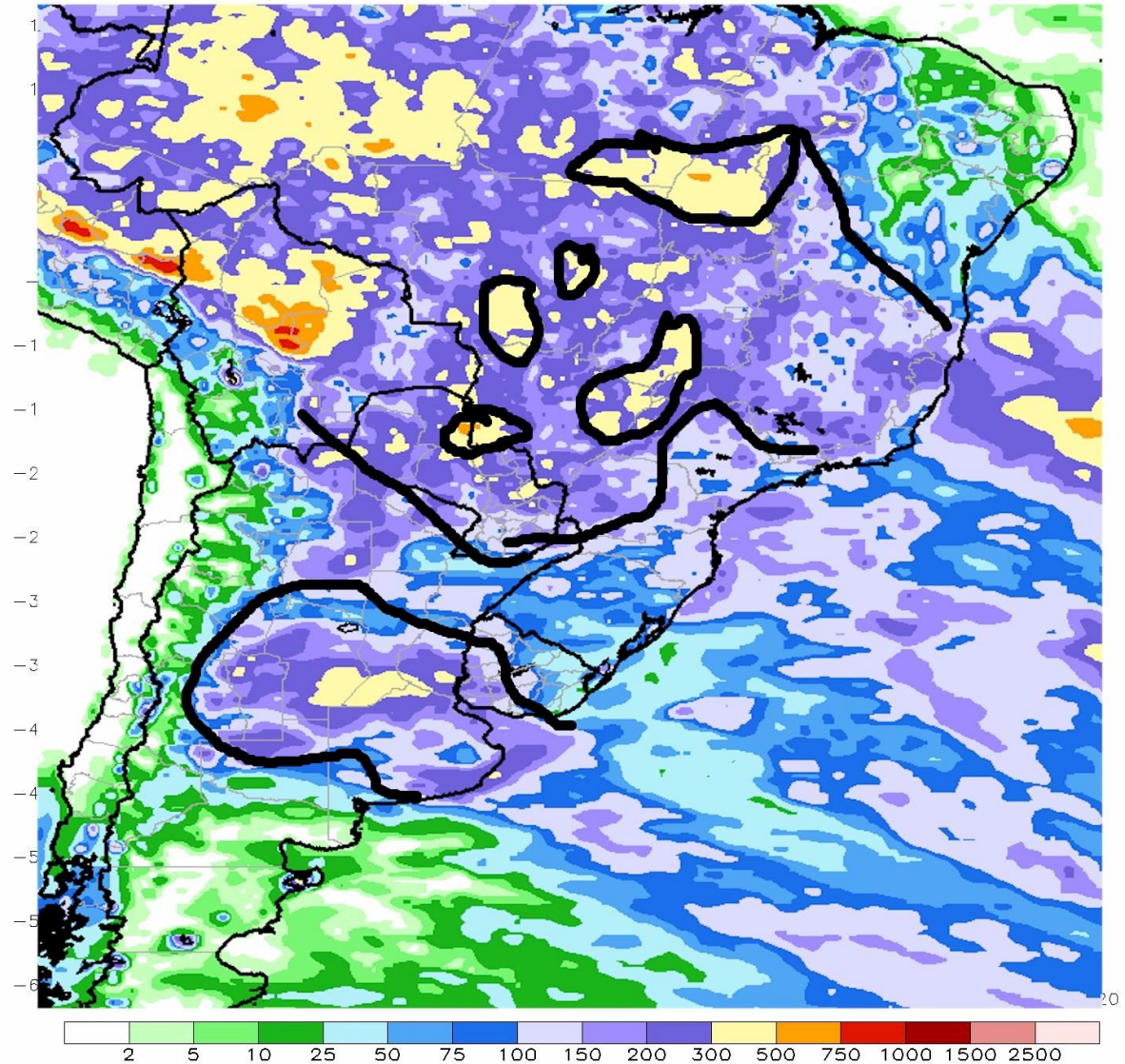


SA ACTUAL PRECIP DEC 2017

CMORPH 1-Month Total Rainfall (mm)

Period: 01Dec2017 - 31Dec2017

**GOOD RAINS
CENTRAL ARG
100-400mm/
4-16 inches and
all of Brazil had
Good rains IN
DEC 2017**

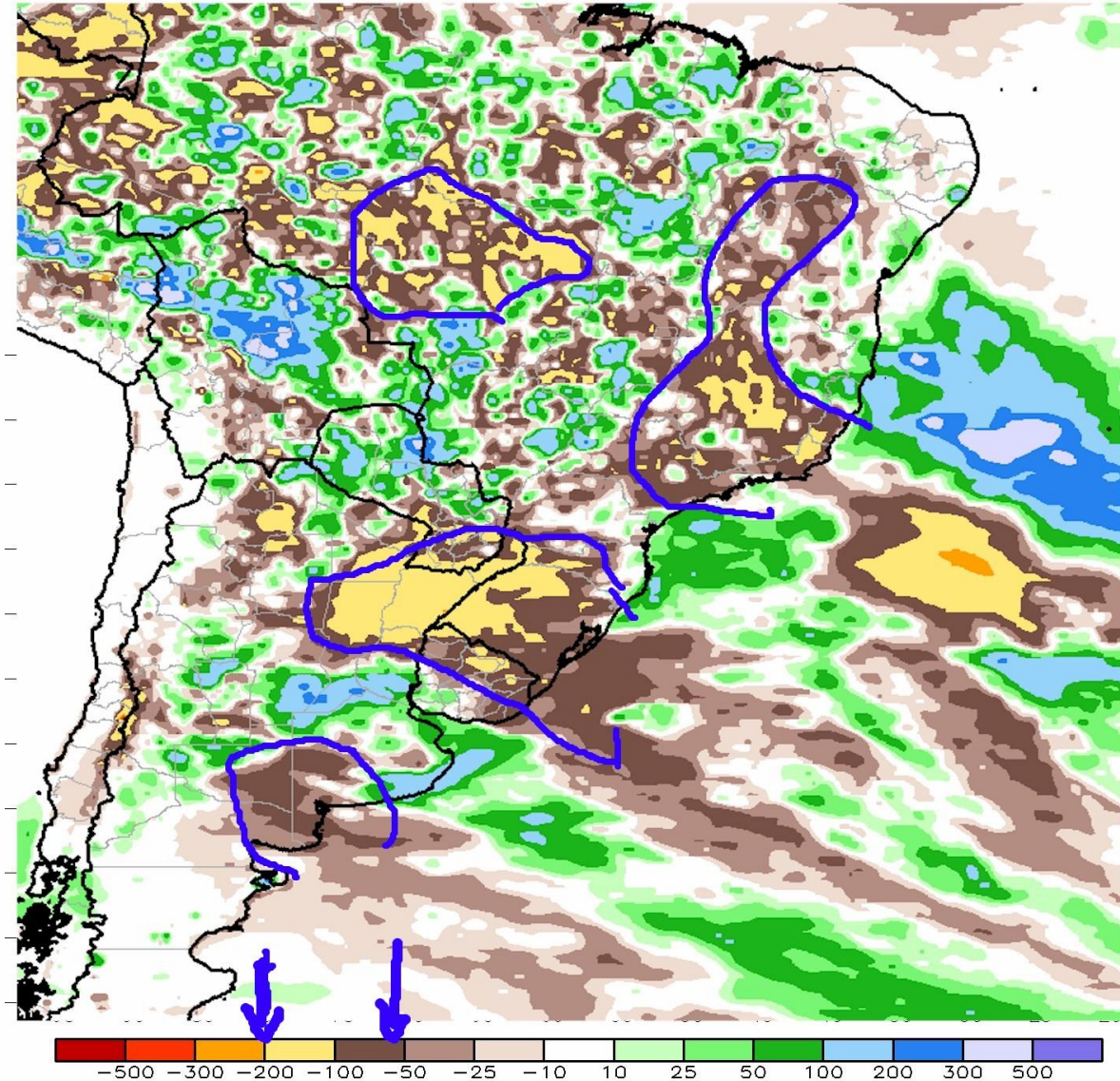


SA RAINFALL ANOMALIES IN MM

CMORPH 1-Month Total Rainfall Anomaly (mm)

Period: 01Dec2017 - 31Dec2017

in ARG the BIG rainfall “LOSS” over La Pampa western Buenos Aires into SE Brazil ... In Brazil Northern Minas into most of Bahia

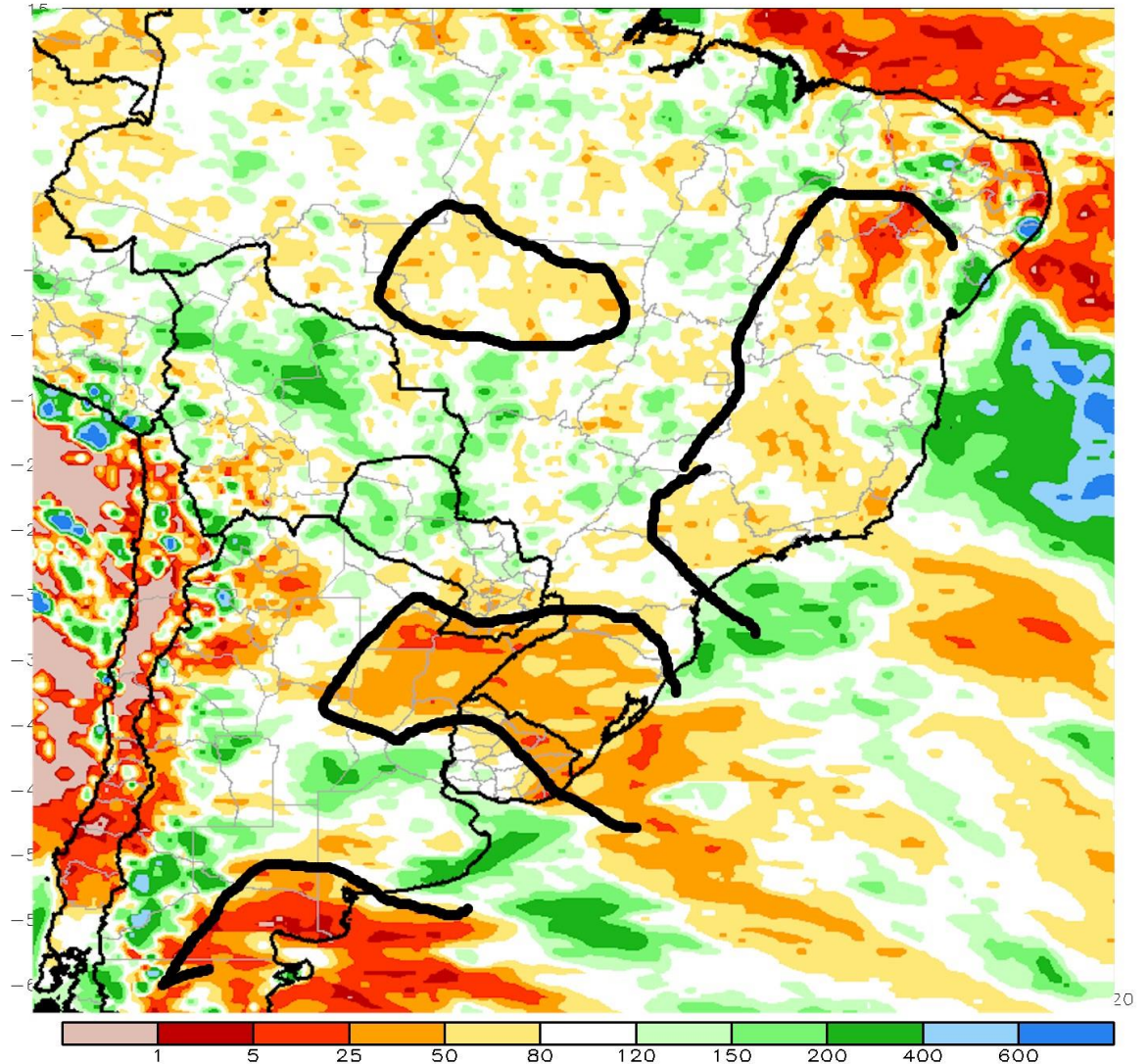


SA RAINFALL ANOMALIES DEC 2017

CMORPH 1-Month Percent of Normal Rainfall (%)

Period: 01Dec2017 - 31Dec2017

**Central ARG ws
NOT dry south
ARG and
Northern ARG
was much of
east central
Brazil saw
somewhat Below
Normal rains as
did Mato
Grosso**



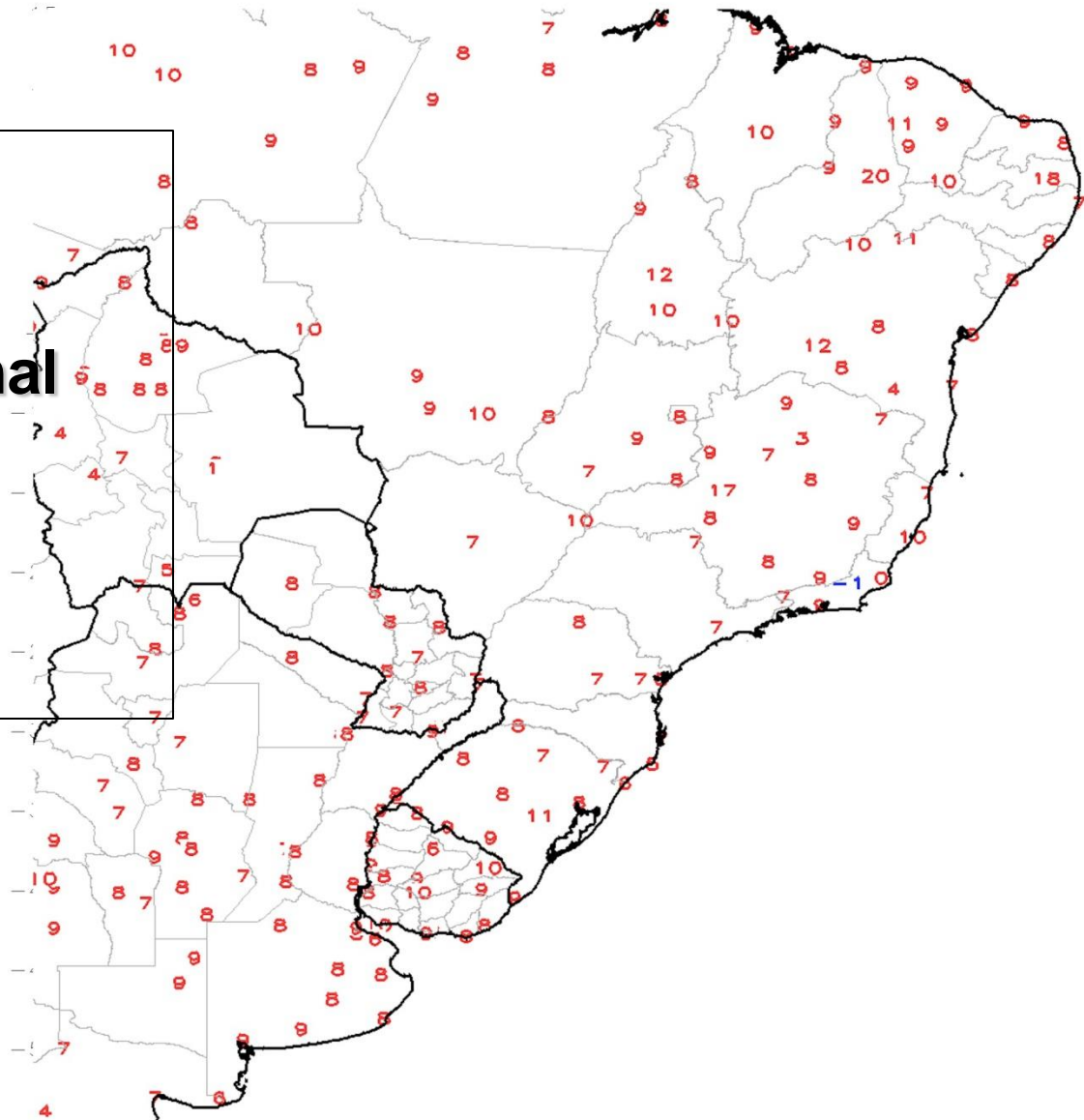
GTS Station Running 7-Day Average Temperature Anomaly (C)
Period: 28Dec2017 - 03Jan2018

HOT ALL AREAS!!

**ARG saw many areas
+7 to +9c ABOVE Normal**

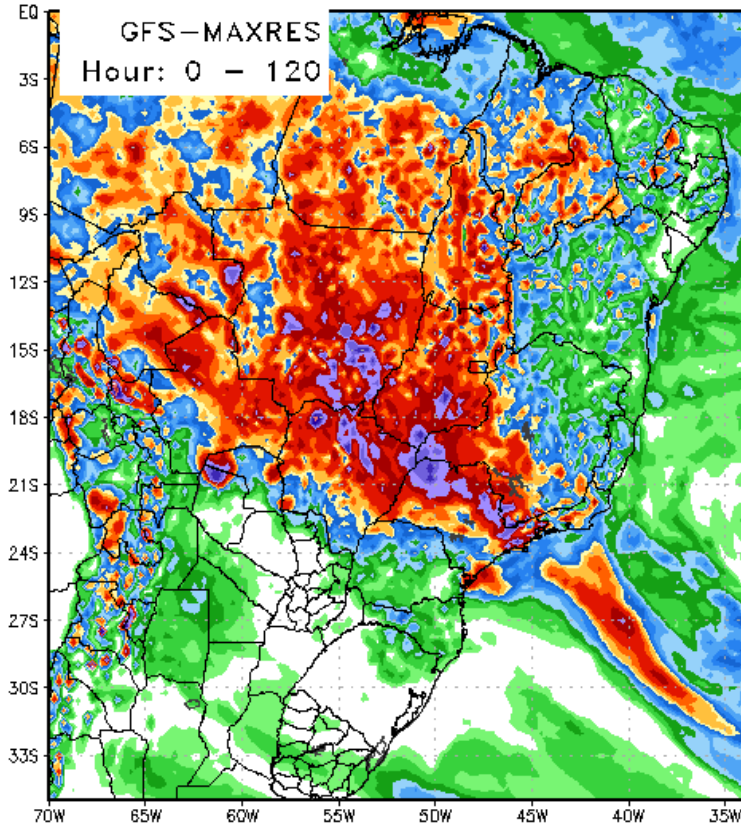
**all of Brazil also saw
MUCH above Normal
Temps +7 to +12c**

Above !!



Excellent model agreement GFS with heavier rainfall amounts ARG mostly dry

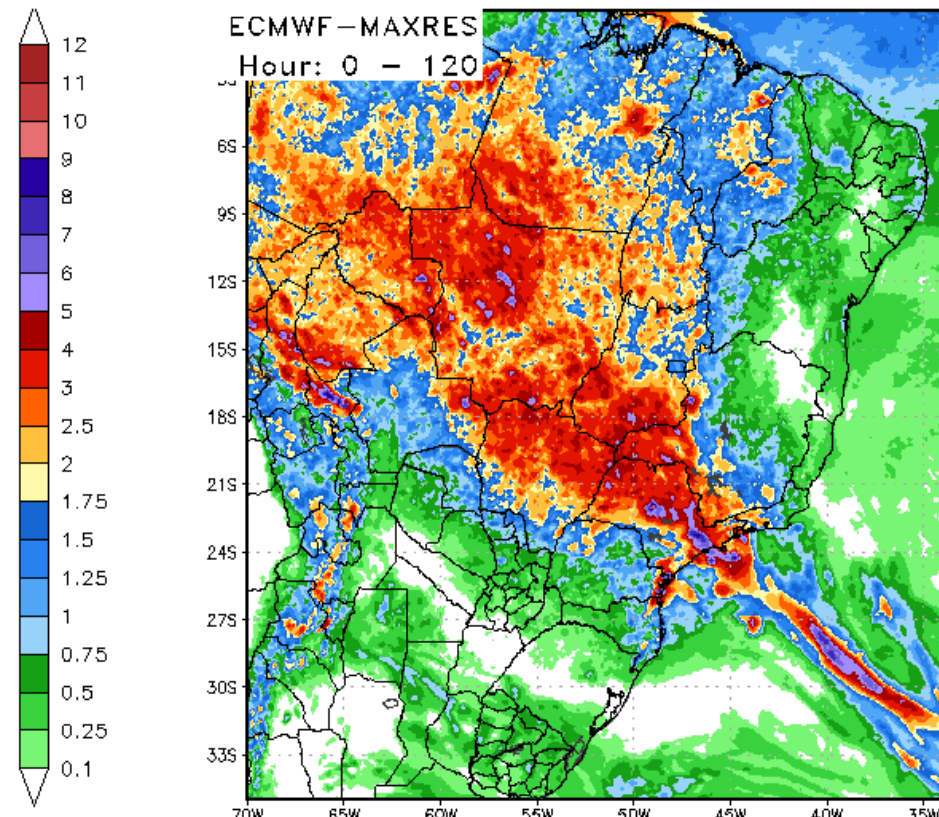
120 Hour Total Precipitation (in)
Valid: 00z Fri 05 Jan 2018 - 00z Wed 10 Jan 2018



Max: 15.3 in
Min: 0.0 in

StormVistaWxModels.com

120 Hour Total Precipitation (in)
Valid: 00z Fri 05 Jan 2018 - 00z Wed 10 Jan 2018



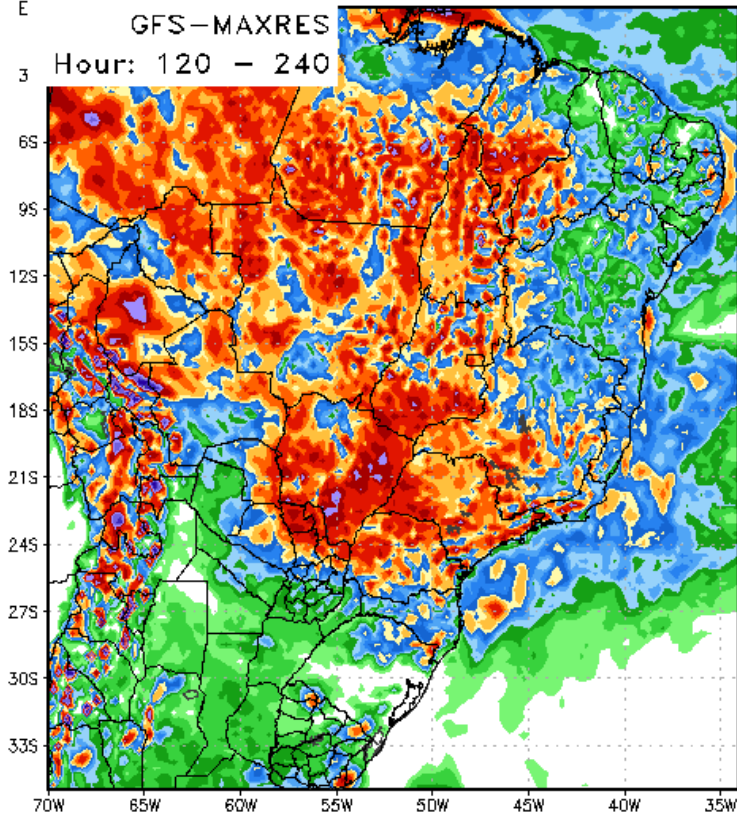
Max: 10.1 in
Min: 0.0 in

StormVistaWxModels.com

STRONG DISAGREEMENT -- GFS with

widespread 1-4"/ 25-100mm high % coverage all of Brazil except for north Minas Gerais & Bahia. EURO has heavy rains 2-8"/ 50-200mm over Parag into Parana Santa Catarina and much weaker rains over rest of west/ central Brazil

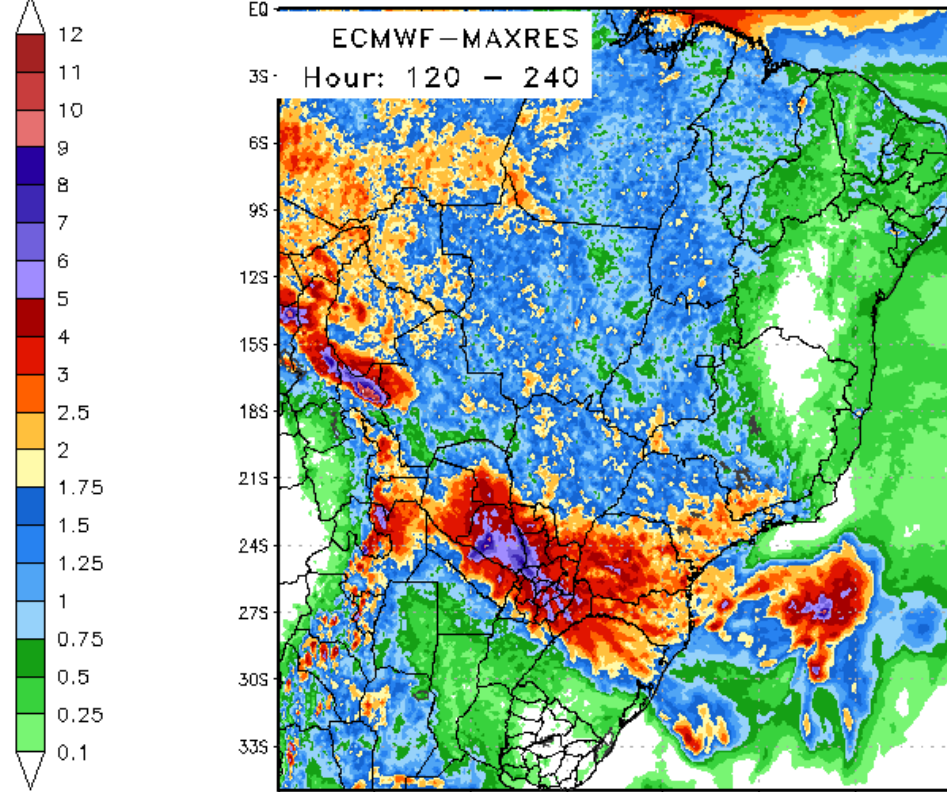
120 Hour Total Precipitation (in)
Valid: 00z Wed 10 Jan 2018 - 00z Mon 15 Jan 2018



Max: 13.1 in
Min: 0.0 in

StormVistaWxModels.com

120 Hour Total Precipitation (in)
Valid: 12z Wed 10 Jan 2018 - 12z Mon 15 Jan 2018

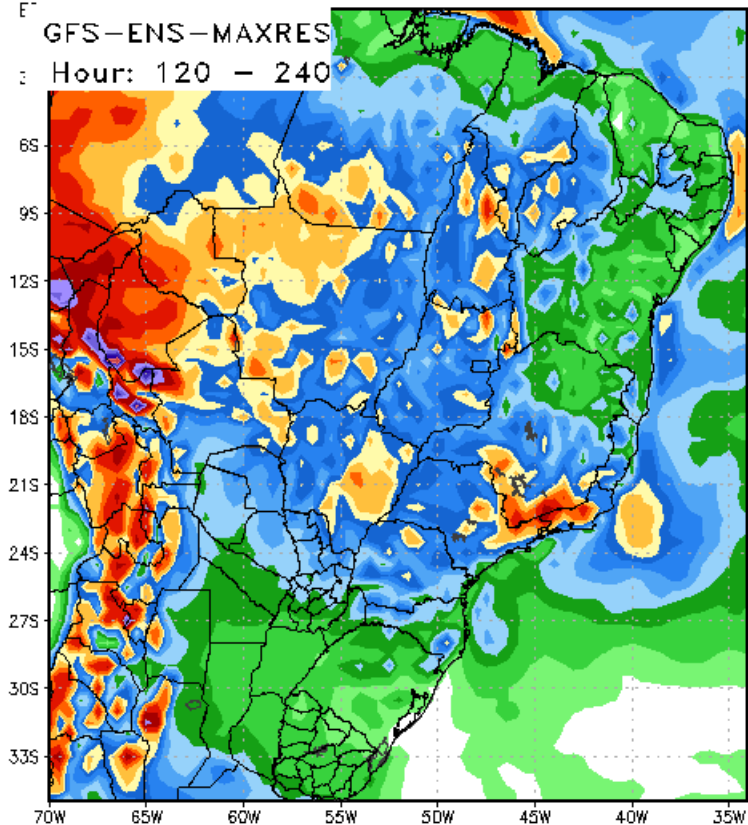


Max: 12.2 in
Min: -0.0 in

StormVistaWxModels.com

GOOD model agreement –Some moderate rains in ARG .. Hvy over sw/se Brazil

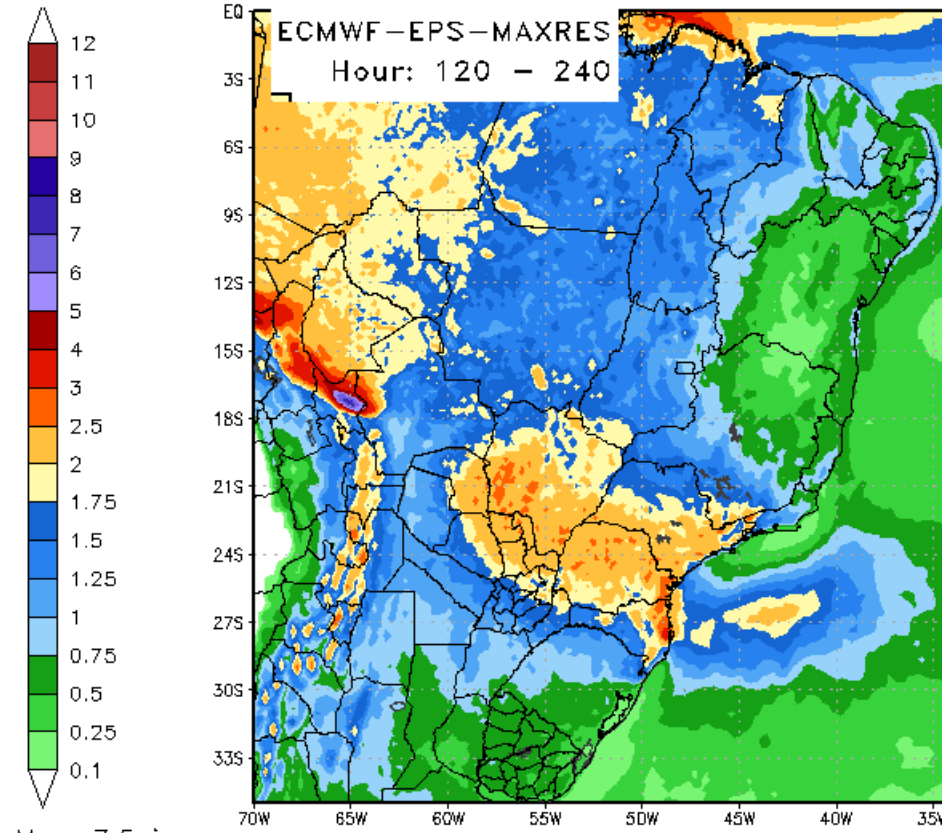
120 Hour Total Precipitation (in)
Valid: 00z Wed 10 Jan 2018 – 00z Mon 15 Jan 2018



Max: 11.0 in
Min: 0.0 in

StormVistaWxModels.com

120 Hour Total Precipitation (in)
Valid: 12z Wed 10 Jan 2018 – 12z Mon 15 Jan 2018

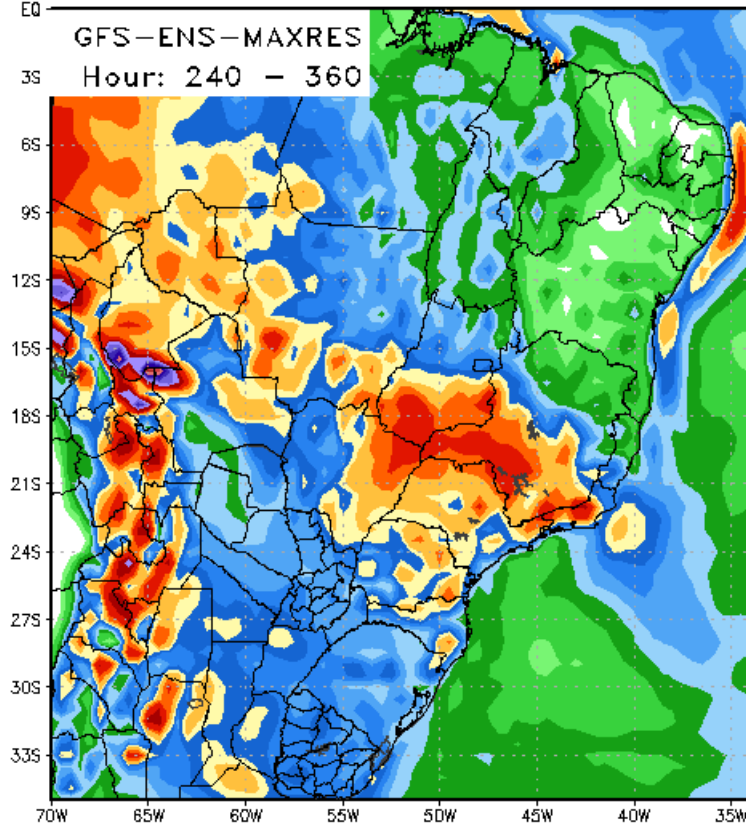


Max: 7.5 in
Min: 0.0 in

StormVistaWxModels.com

Excellent model agreement for 11-15 day GFS with heavier rainfall amounts both Models have good rains for ARG

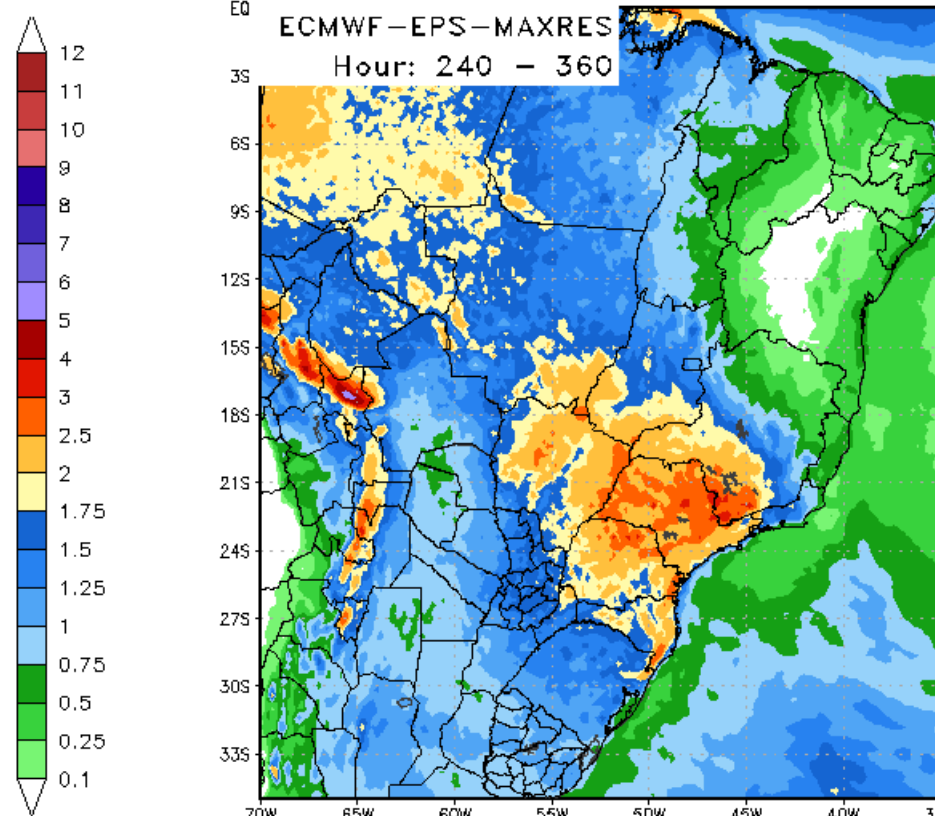
120 Hour Total Precipitation (in)
Valid: 00z Mon 15 Jan 2018 - 00z Sat 20 Jan 2018



Max: 11.5 in
Min: 0.0 in

StormVistaWxModels.com

120 Hour Total Precipitation (in)
Valid: 12z Mon 15 Jan 2018 - 12z Sat 20 Jan 2018



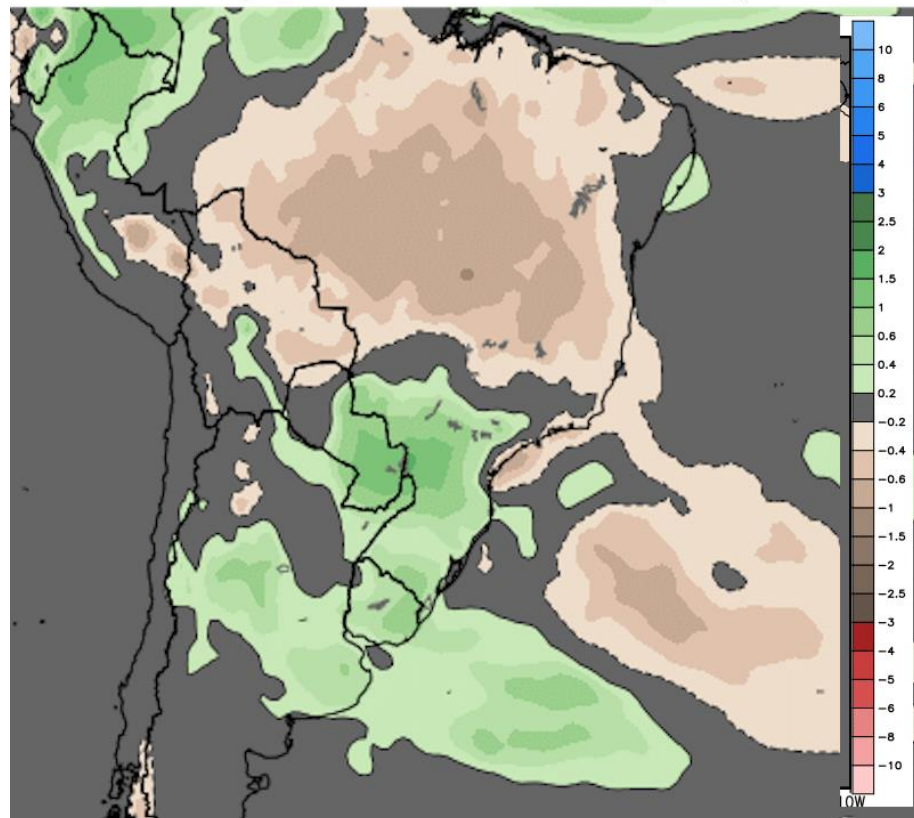
Max: 5.5 in
Min: -0.0 in

StormVistaWxModels.com

WEEK 3 JAN 12-18 Both models WET all of ARG into se / se Brazil

ECMWF EPS Ensemble Mean 7-day Avg Precipitation Anomaly [inch]
Init: 00Z04JAN2018 -- [168] hr --> Valid on Thu 00Z18JAN2018 Day 0 - Day 7

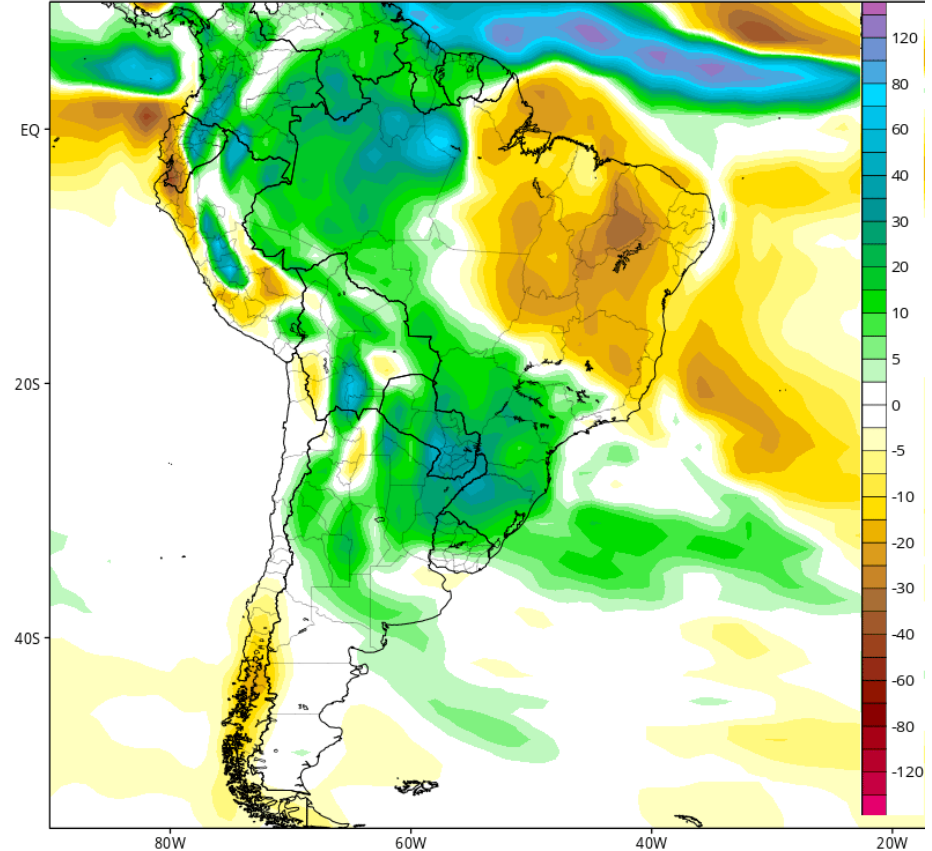
Min|Max



CFSv2 Accumulated Precip. Anomaly (mm) from 00z12Jan2018 to 00z19Jan2018 (Days 8-14)

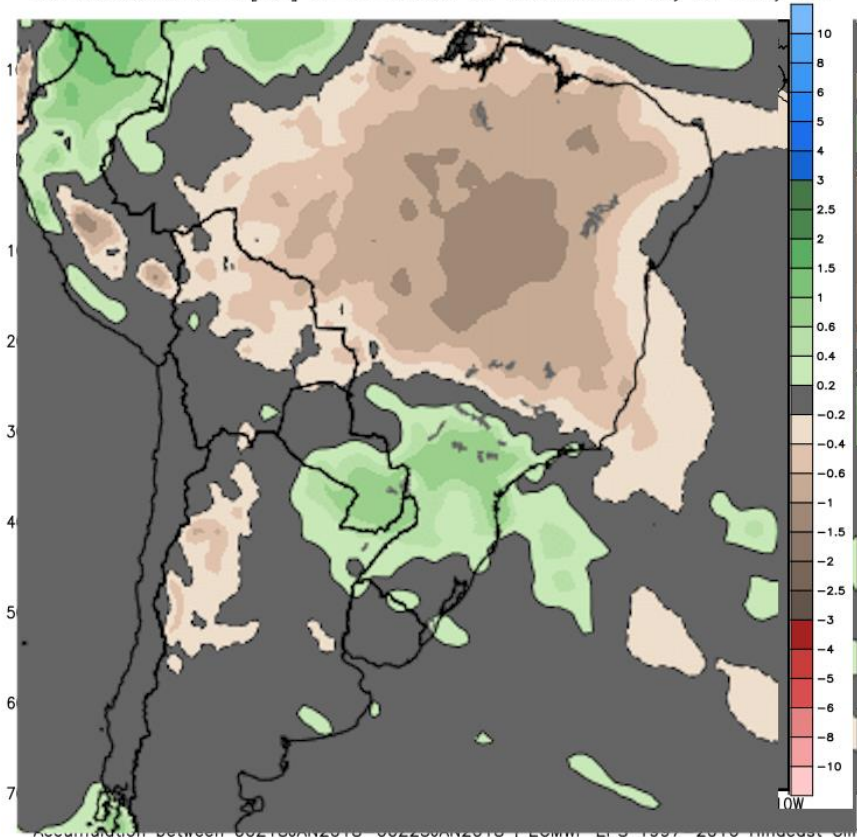
Average of last 48 forecasts (12 runs x 4 members)

Init: 06z Jan 02 2018 through 00z Jan 05 2018



WEEK 3 JAN 19-26 Both models WET over se Brazil DRY over all of central western eastern Brazil Near Normal for ARG

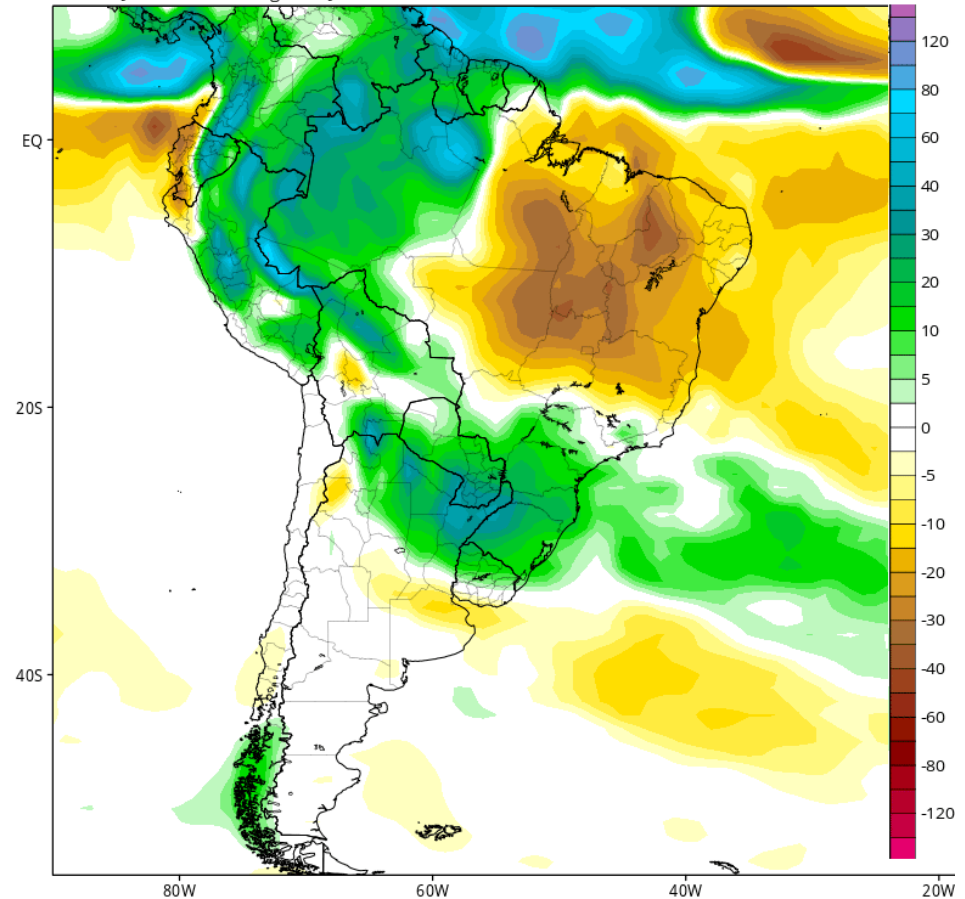
ECMWF EPS Ensemble Mean 7-day Avg Precipitation Anomaly [inch]
Init: 00Z04JAN2018 -- [252] hr --> Valid on Thu 00Z25JAN2018 Day 3.5 - Day 10.5



CFSv2 Accumulated Precip. Anomaly (mm) from 00z19Jan2018 to 00z26Jan2018 (Days 15-21)

Average of last 48 forecasts (12 runs x 4 members)

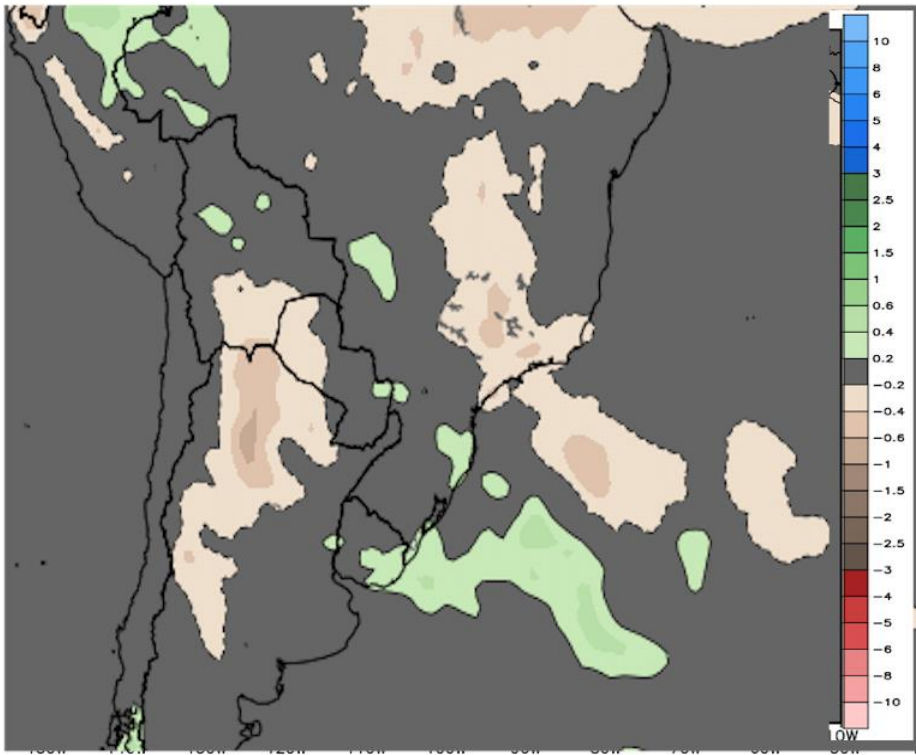
Init: 06z Jan 02 2018 through 00z Jan 05 2018



WEEK 3 JAN 26-FEB 2 Both Models sort of dry for ARG WET all se Brazil

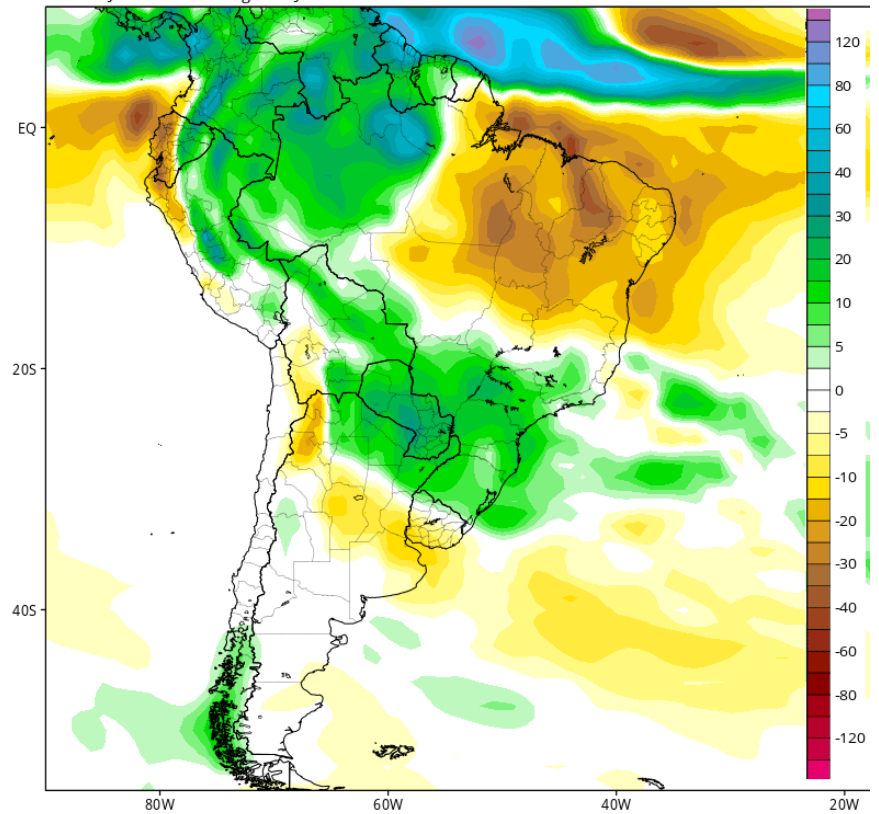
ECMWF EPS Ensemble Mean 7-day Avg Precipitation Anomaly [inch]
Init: 00Z04JAN2018 -- [336] hr --> Valid on Thu 00Z01FEB2018 Day 7 - Day 14

Mir



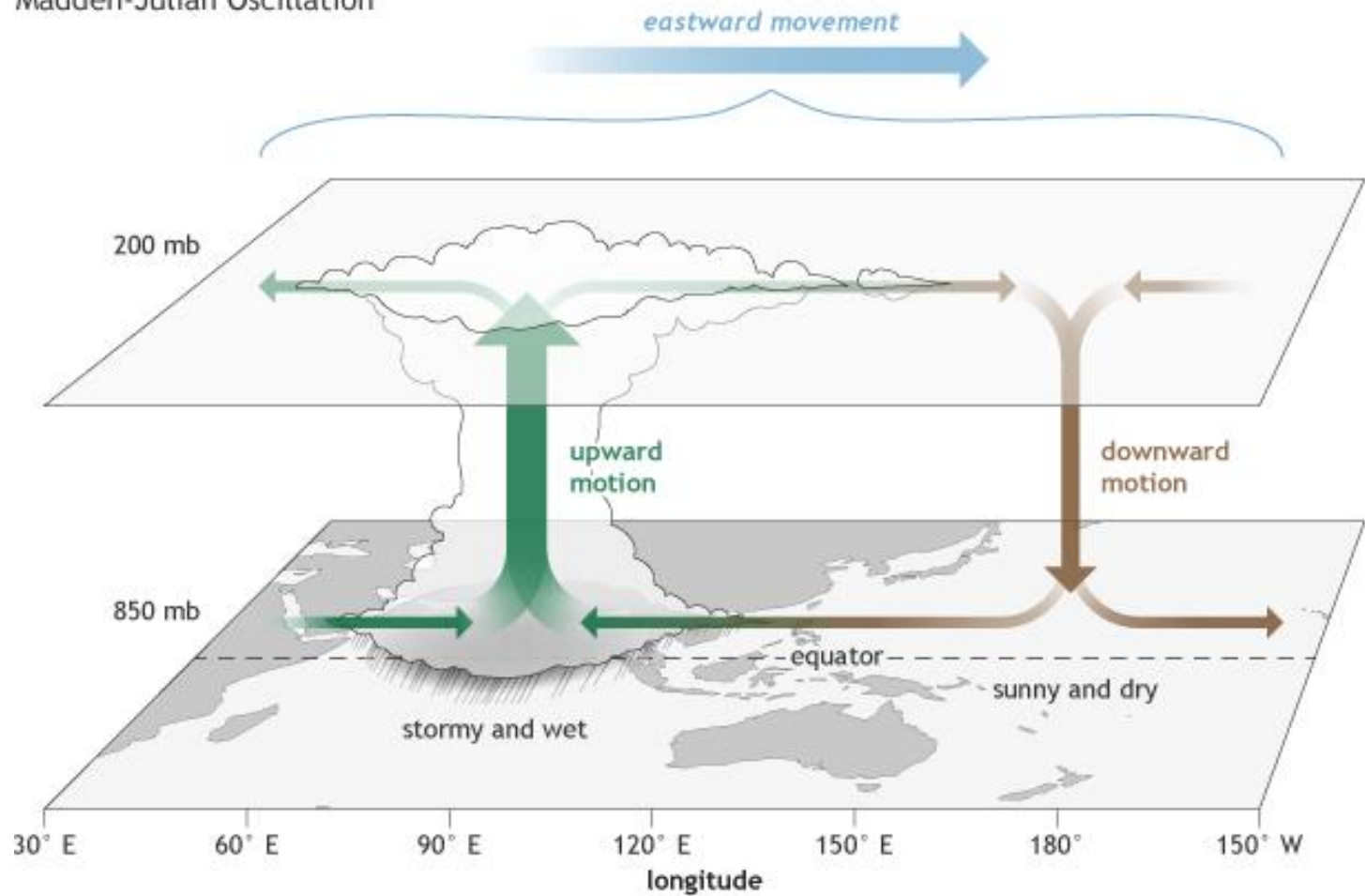
Accumulation between 00Z25JAN2018-00Z01FEB2018 | ECMWF EPS 1997-2016 Hindcast Climate

CFSv2 Accumulated Precip. Anomaly (mm) from 00z26Jan2018 to 00z02Feb2018 (Days 22-28)
Average of last 48 forecasts (12 runs x 4 members)
Init: 06z Jan 02 2018 through 00z Jan 05 2018

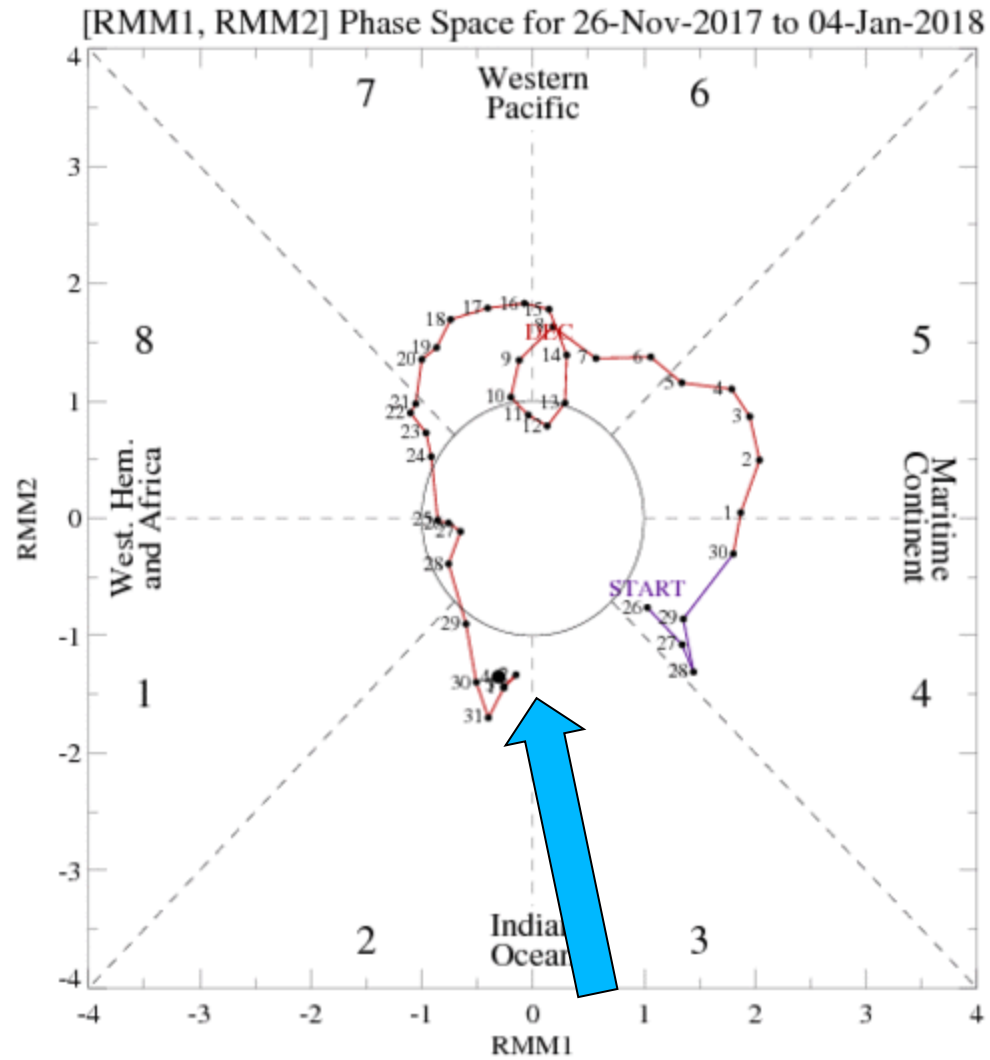


LETS TALK MJO/ENSO

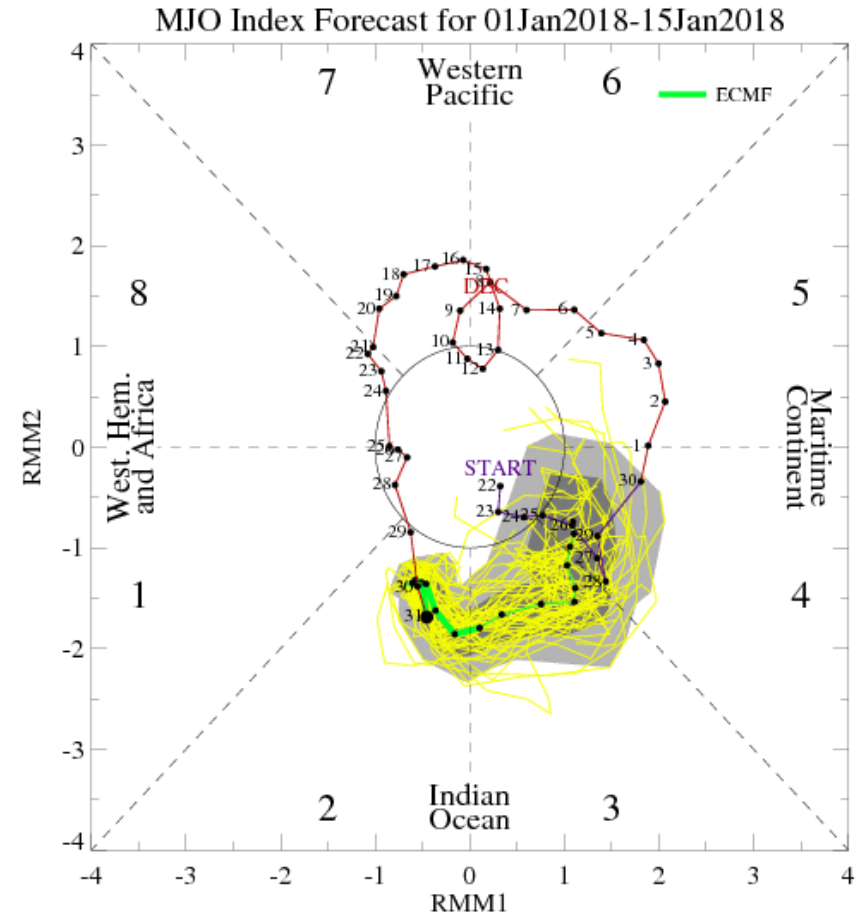
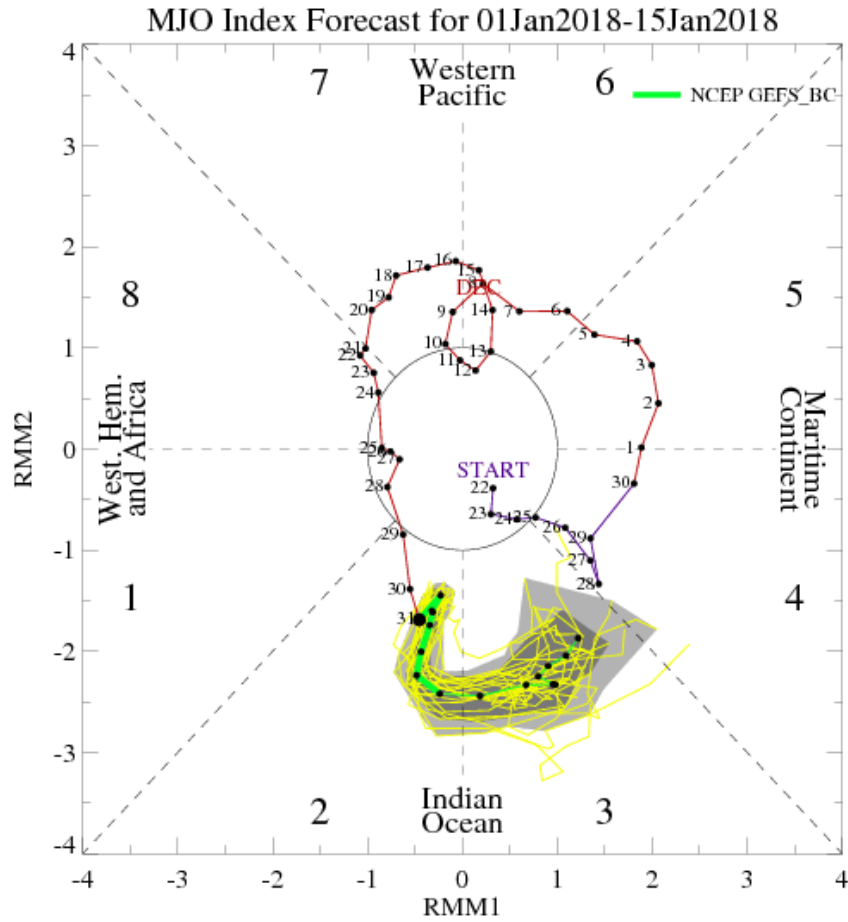
Madden-Julian Oscillation



MJO IS IN PHASE 2



MJO PHASE MOVES BACK OUT ..INTO PHASE 3 AND 4 BY MID / LATE JAN



**MJO MOVES
INTO PHASE 3
SHORTLY THEN**

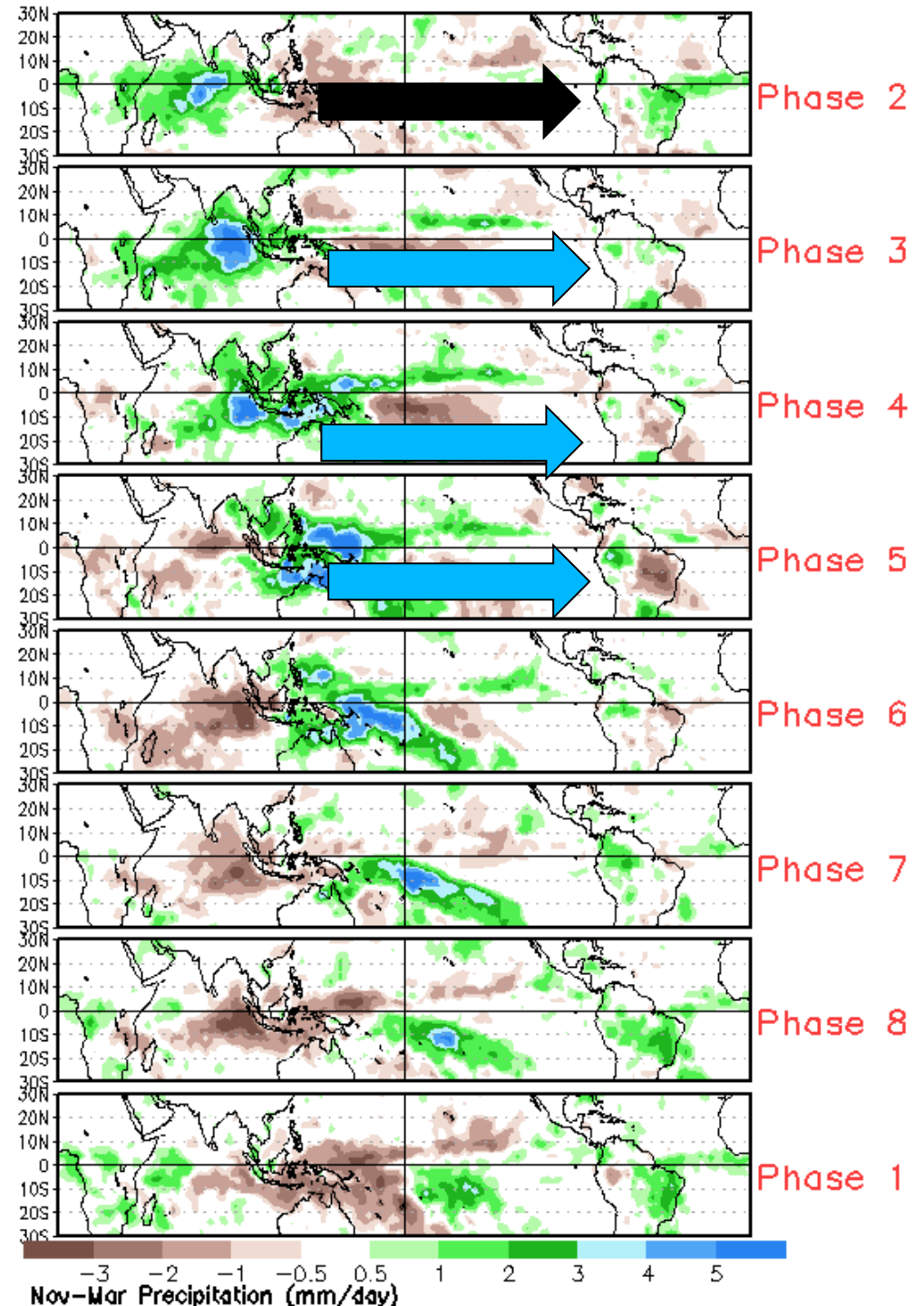
PHASE 4

PHASE 5

**3 = turns Drier in Brazil
wetter over ARG**

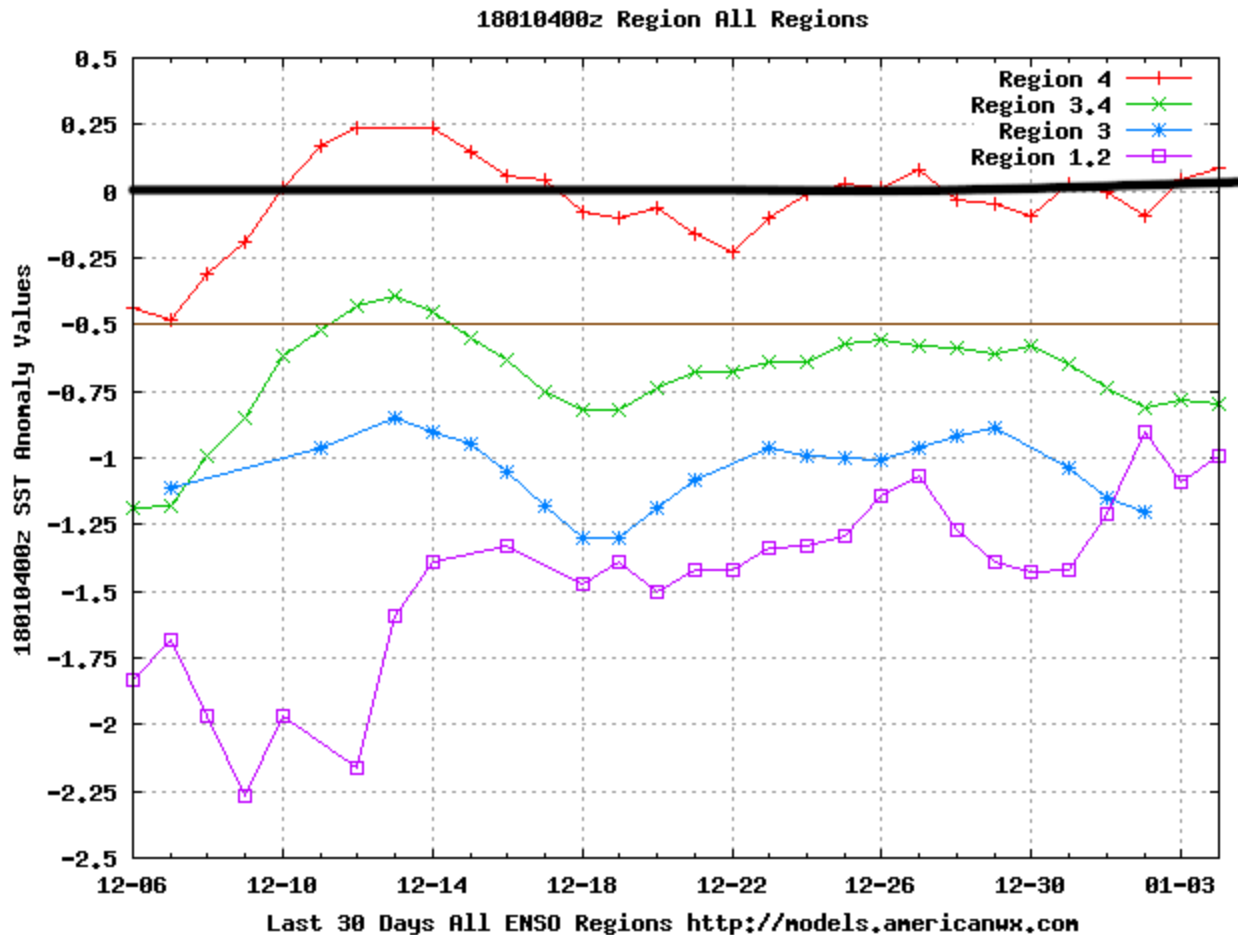
**4= Wet over ARG dry
over central/ eastern
Brazil**

**5= very dry Brazil
wet all of ARG**



ACTUAL SEA SURFACE TEMP ANOMALIES – of all 4 regions.. This is NOT a Model “projection”

Moderately cold SSTA ... shows LA NINA has stabilized



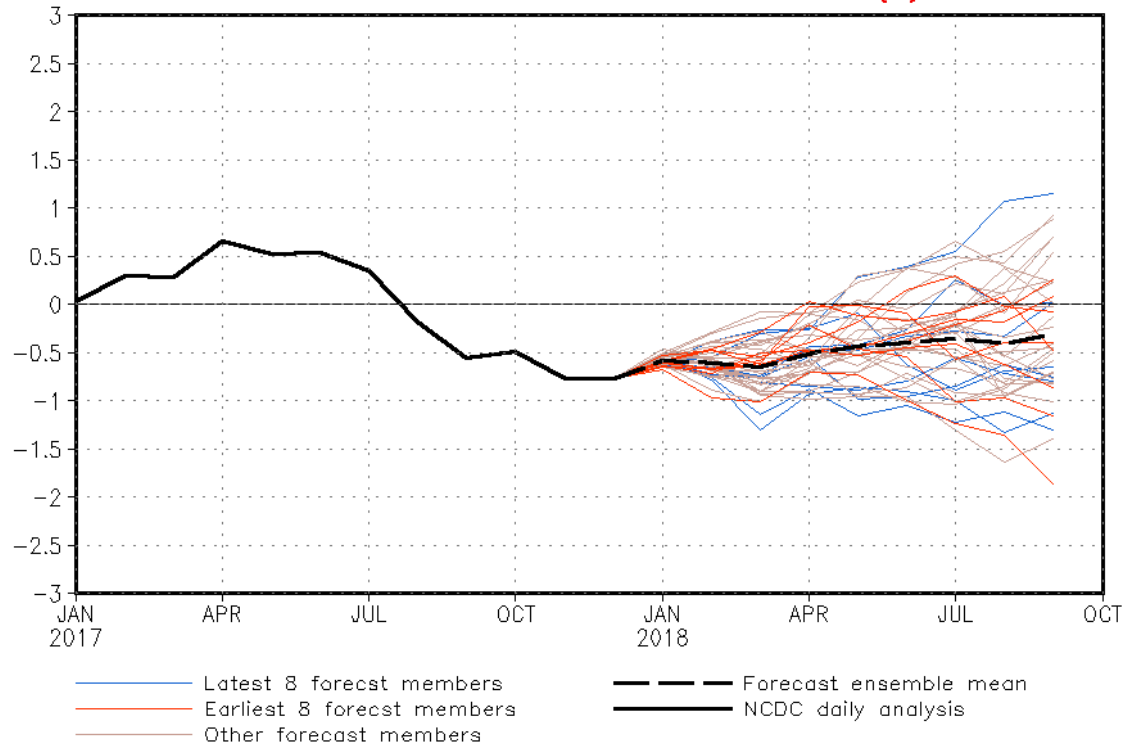
LATEST CFS MODEL PROJECTION = ** La Nina NEVER reaches threshold for MODERATE but stays weak into APRIL... Prolonging dry pattern into at least part of SPRING 2018



NWS/NCEP/CPC

Last update: Thu Jan 4 2018
Initial conditions: 24Dec2017-2Jan2018

CFSv2 forecast Nino3.4 SST anomalies (K)



SUMMARY S.AMERICA

1. LA NINA HOLDING ON .. Favors dry Argentina long term
2. MJO favors increased rains Mid / late January for all of Argentina and Below/ Much Below over Brazil
3. DRYNESS in ARG “feeding” HEAT wave . Much Above Normal temps LIKELY to last into Mid Jan before rains come in
4. JAN FEB will be “battle” between MJO which favors rains over ARG and La Nina which does not. If for any reason n MJO “fades” or turns back into the Neutral circle rains over ARG will collapse

Sometimes I wonder whether the world is being run by smart people who are putting us on, or by imbeciles who really mean it.

MARK TWAIN

