

S.AMERICA GRAIN WEATHER ISSUES

as of FRIDAY
19 JANUARY 2018



LOCATED in Richmond VA

Featured frequently on AGRI-MONEY

EMAIL WXRISK@VERZION .NET



@WXRISK.COM

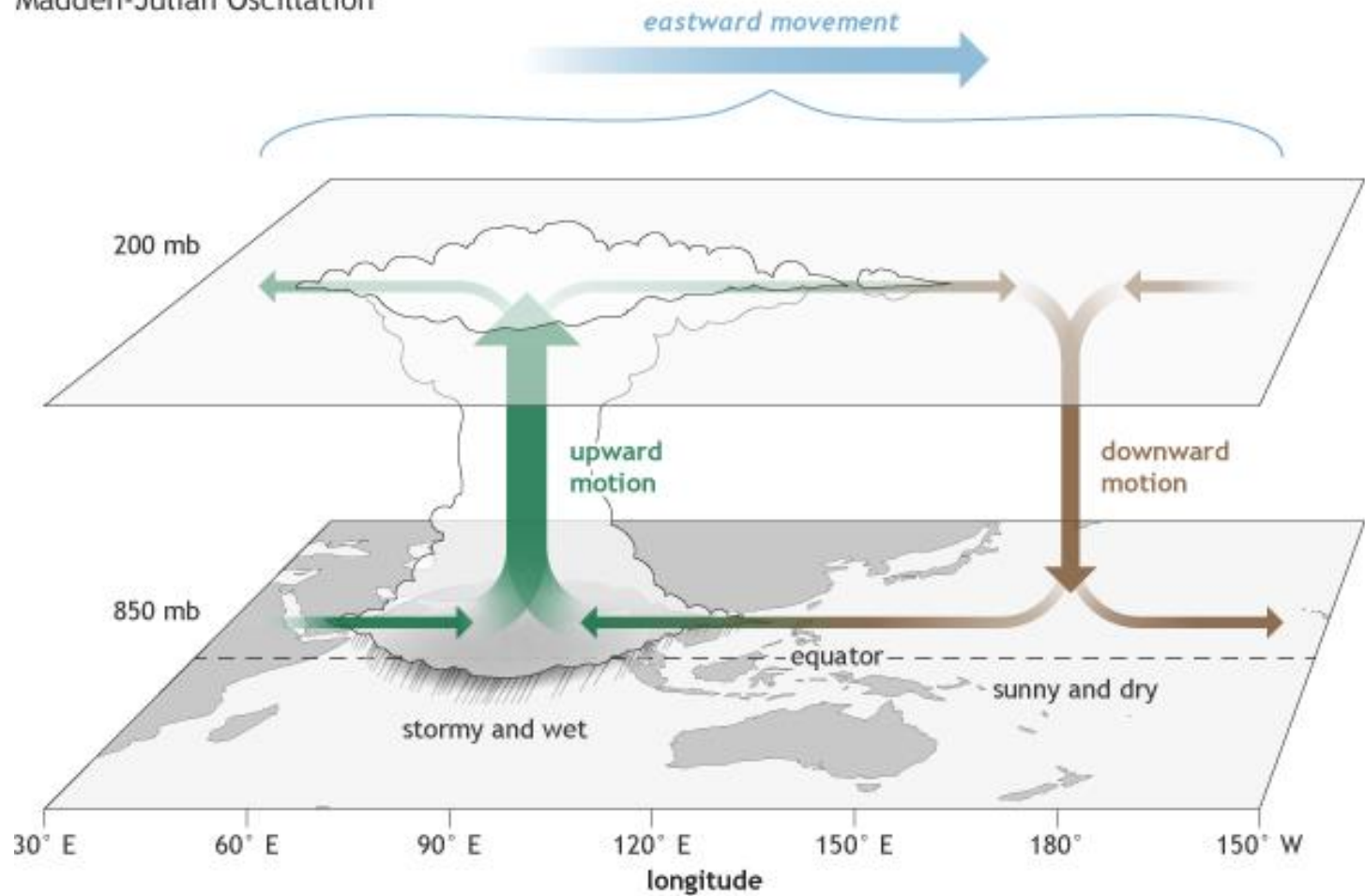


<https://www.facebook.com/WxRisk>

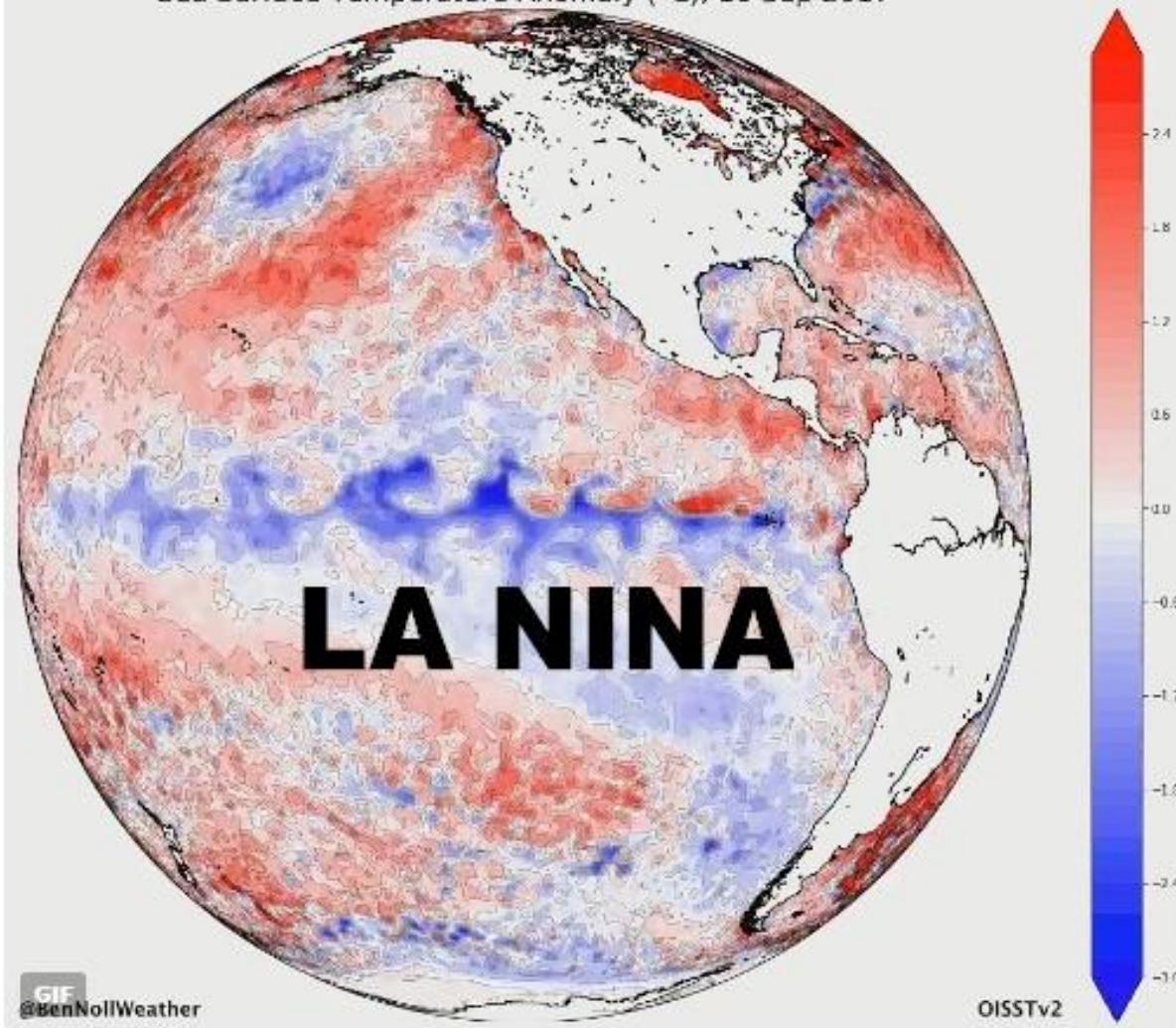
wxrisk@gmail.com

LETS TALK MJO/ENSO

Madden-Julian Oscillation

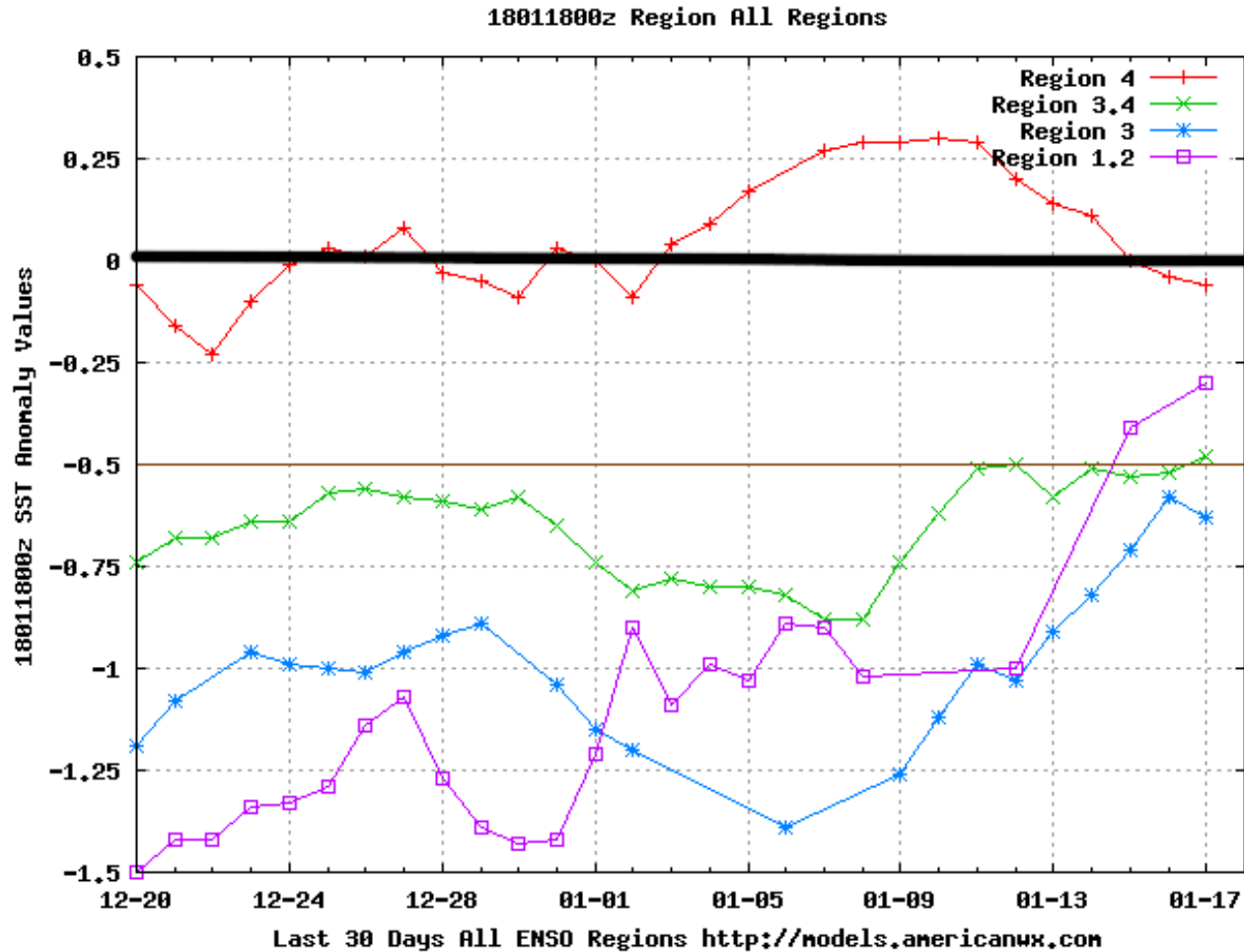


Sea Surface Temperature Anomaly (°C), 10 Sep 2017

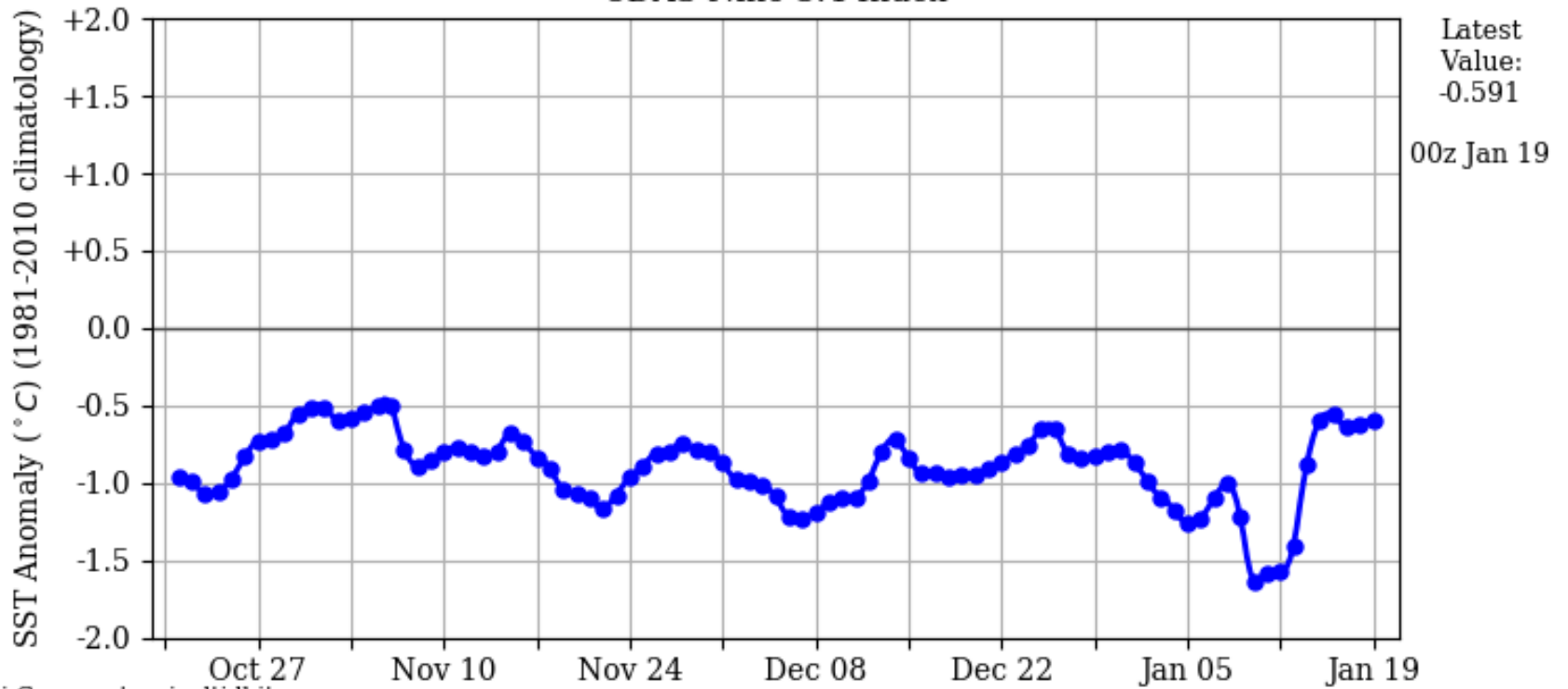


6:29 AM - 13 Sep 2017

ACTUAL SEA SURFACE TEMP ANOMALIES – of all 4 regions.. Is LA NINA weakening ?



CDAS Niño 3.4 Index

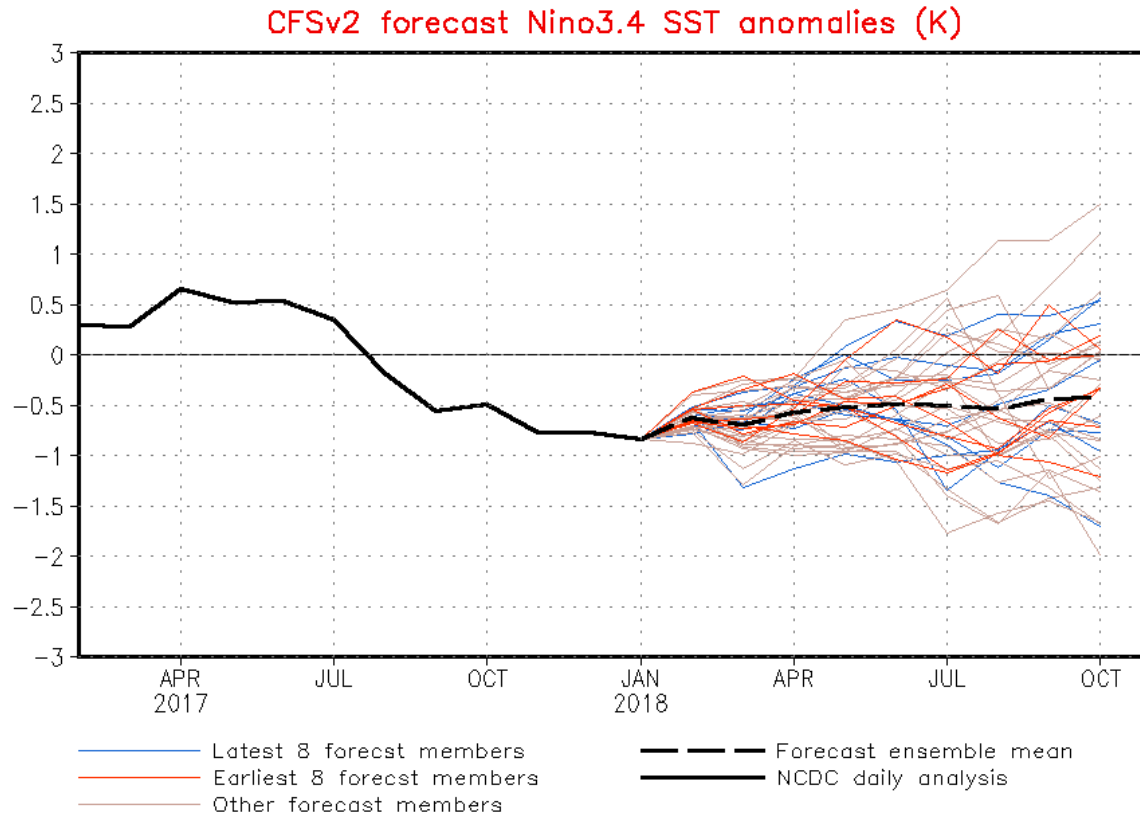


LATEST CFS MODEL PROJECTION = ** La Nina NEVER reaches threshold for MODERATE but stays weak into APRIL... Prolonging dry pattern into at least part of SPRING 2018

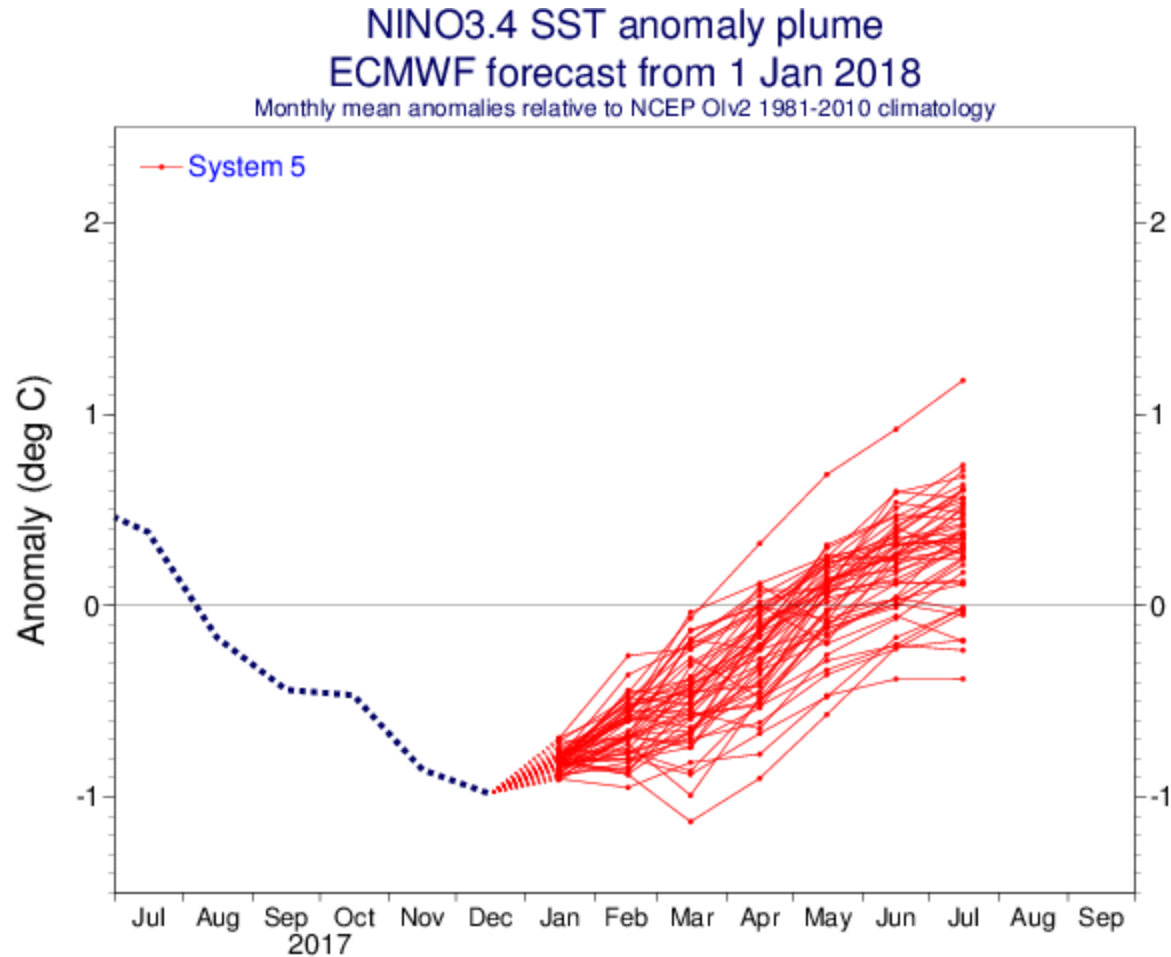


NWS/NCEP/CPC

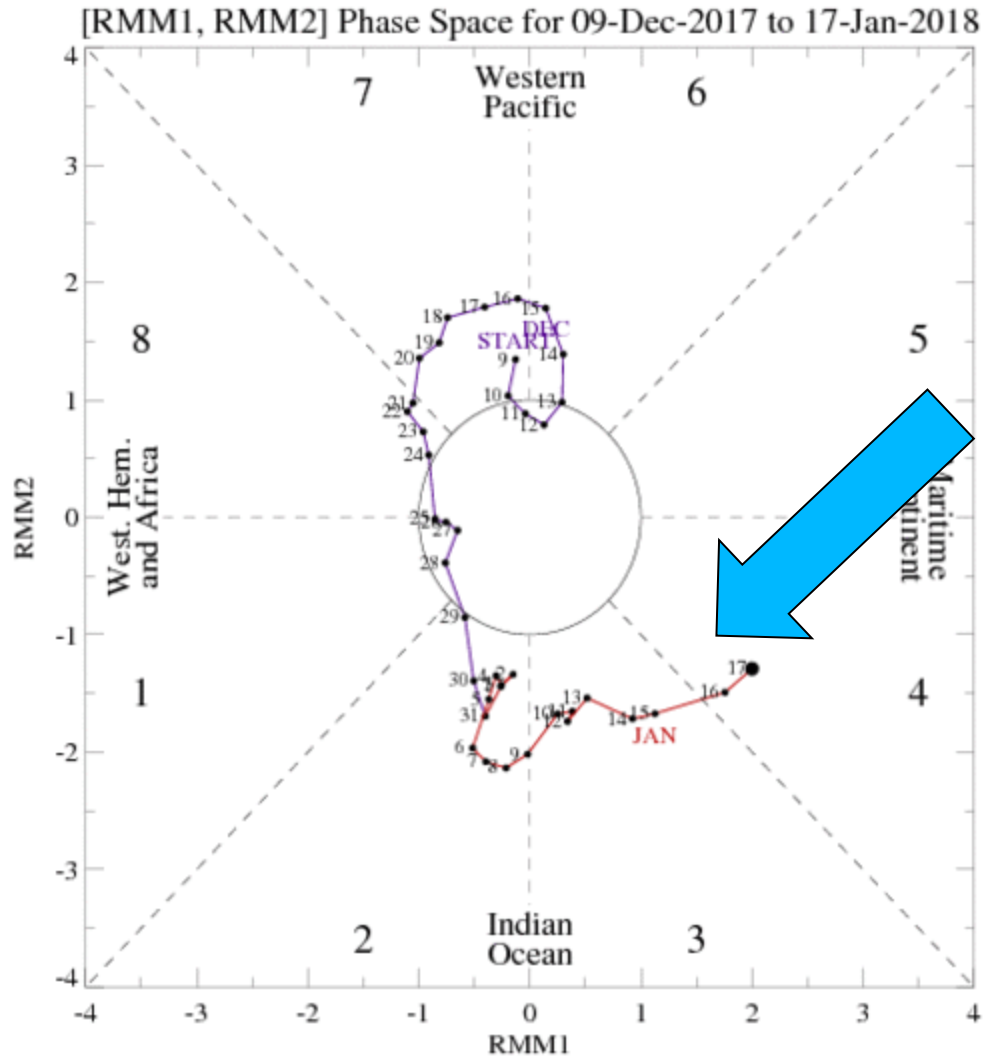
Last update: Wed Jan 17 2018
Initial conditions: 28Dec2017-6Jan2018



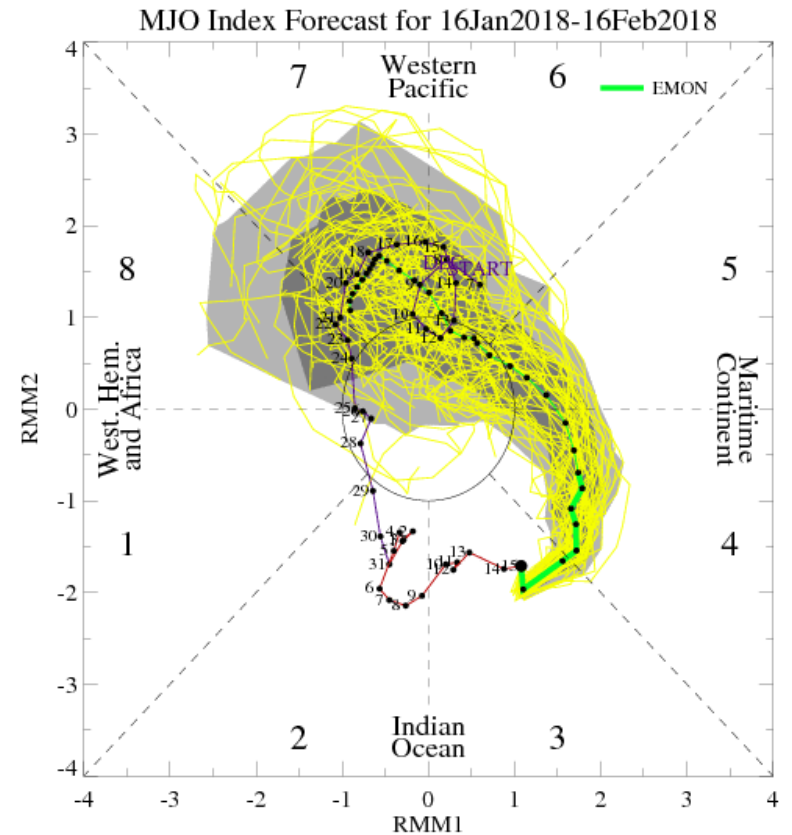
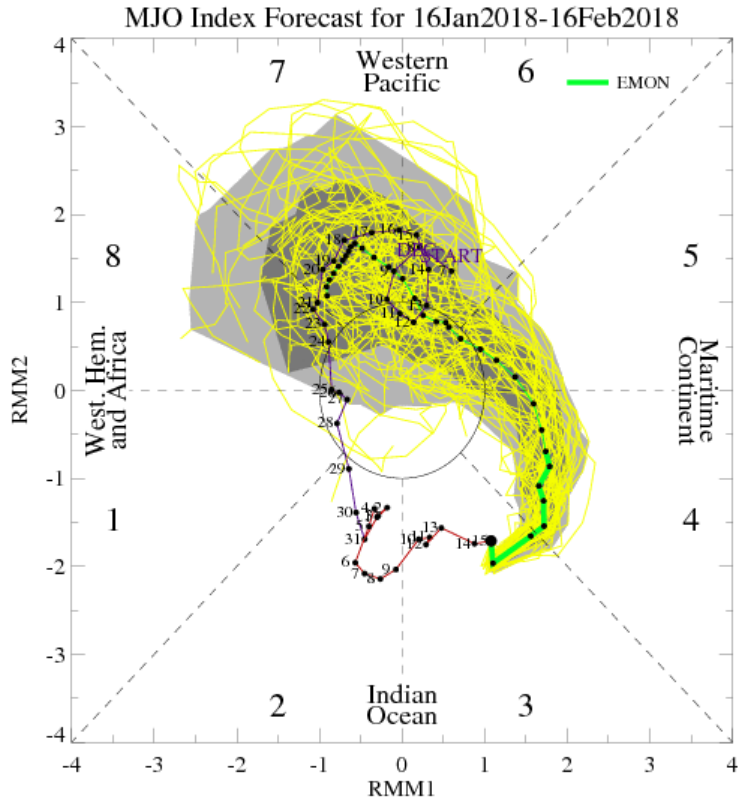
ECMWF ENSO PLUMES ... Weakenig La Nina ...NEUTRAL by APRIL / MAY



MJO IS IN PHASE 4



MJO PHASE MOVES BACK OUT ..INTO PHASE 5 AND 6 BY MID / LATE JAN ... And PHASE 7 by EARLY FEB...

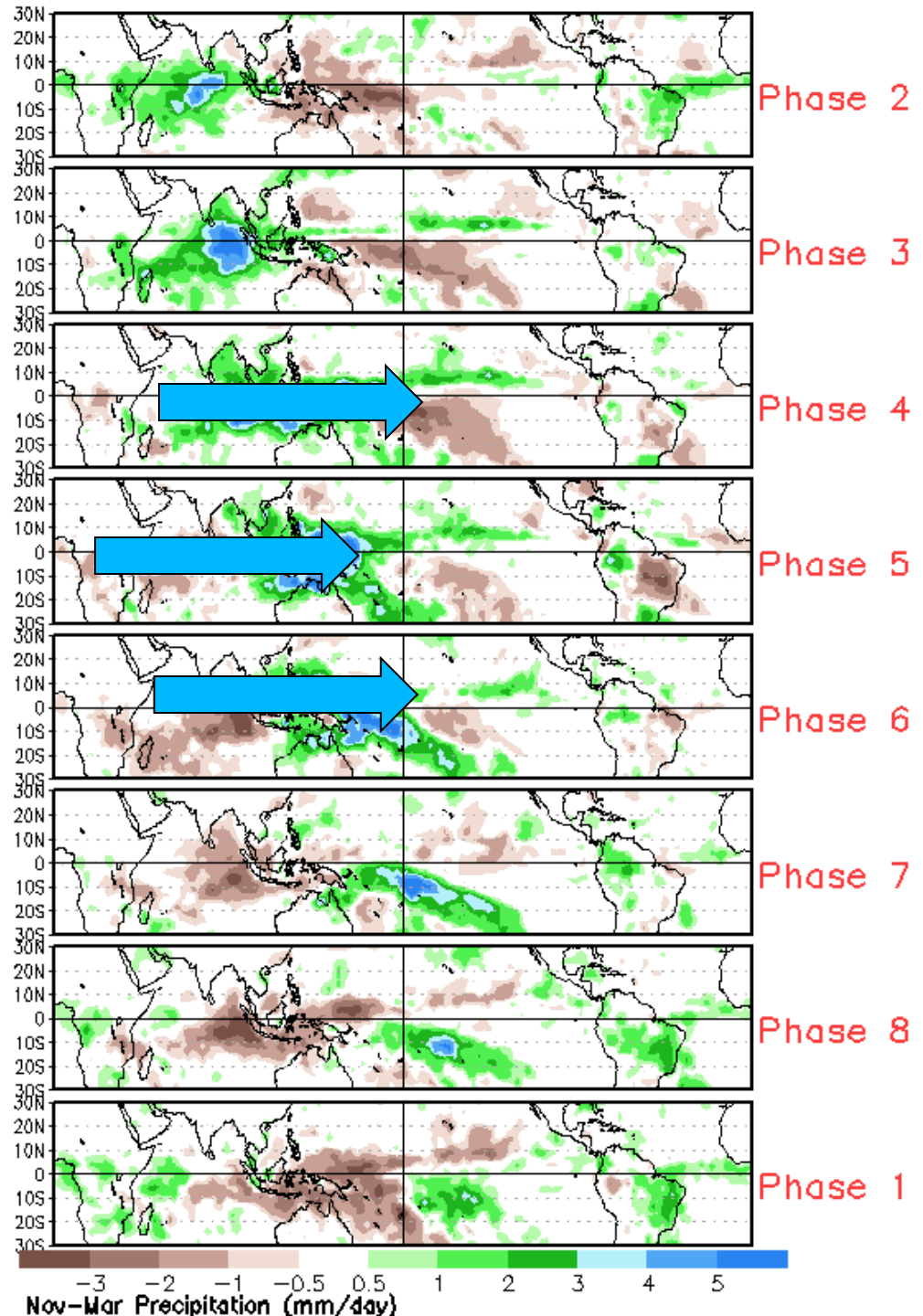


**PHASE 4 NEAR
NORMAL RAINS BRAZIL
STILL WET OVER ARG**

**PHASE 5 Super dry
BRAZIL WET ARG**

PHASE 6 SAME

**PHASE 7 Neutral
Rains ARG/ BRZ**

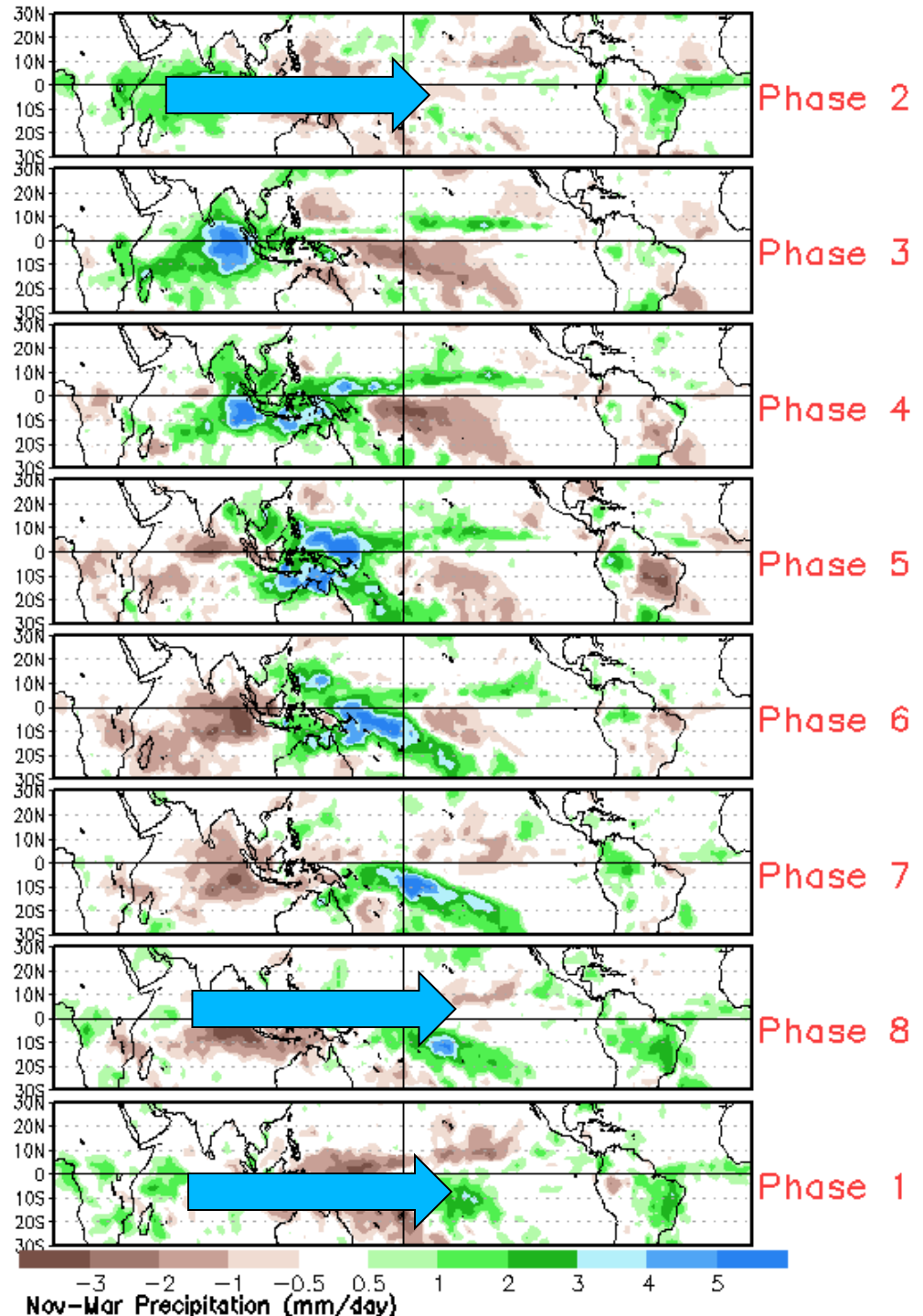


**PHASE 7 west
BRAZIL TURNS
WET NORMAL
RAINS OVER
ARG**

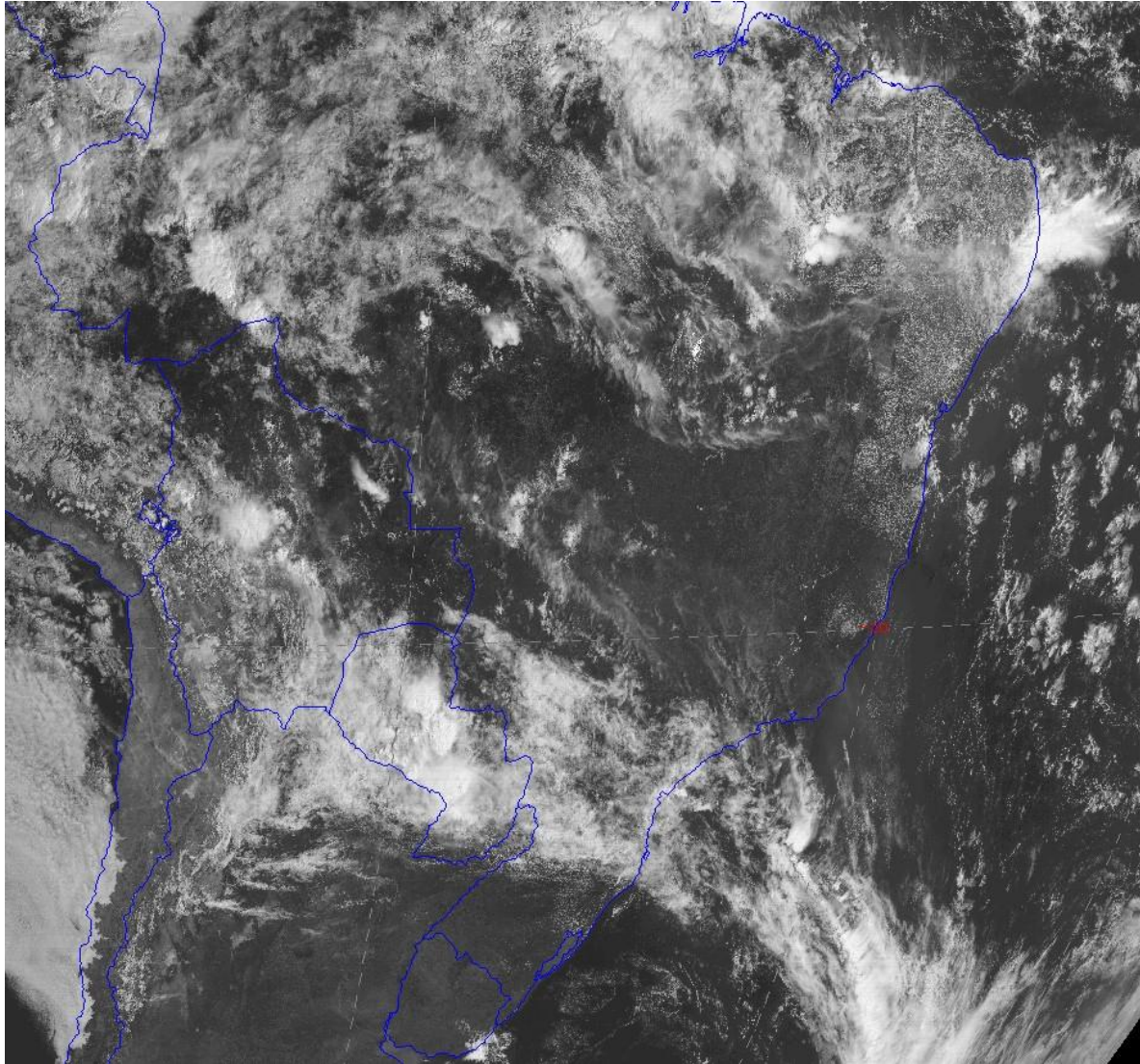
PHASE 8

PHASE 1

PHASE 2



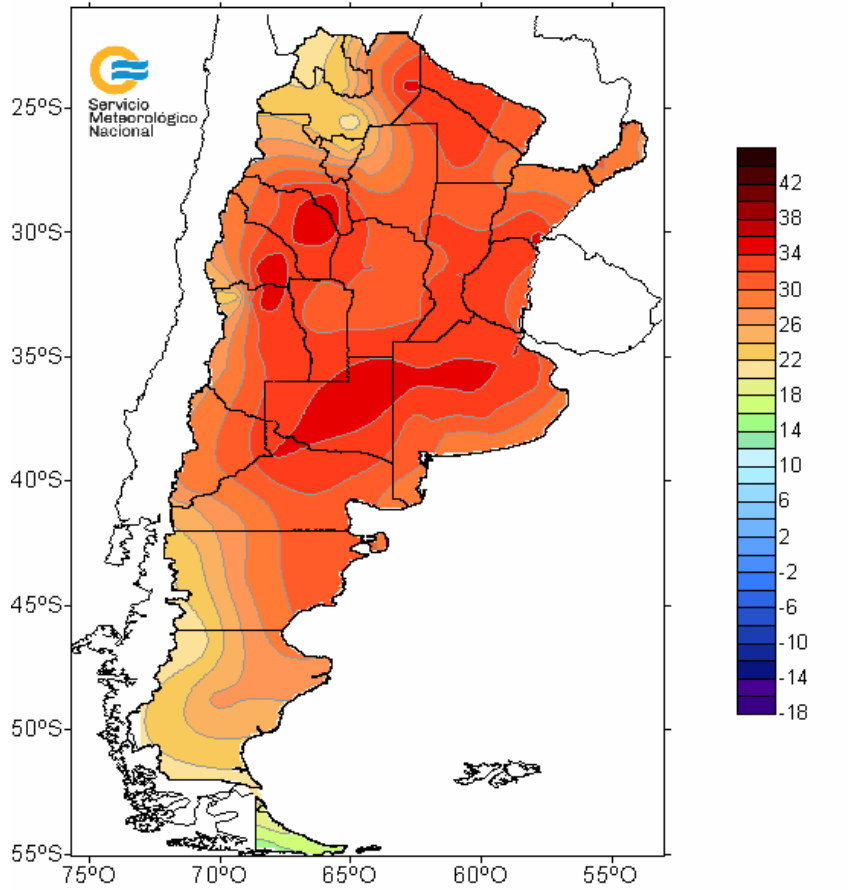
NO BIG storms Friday am



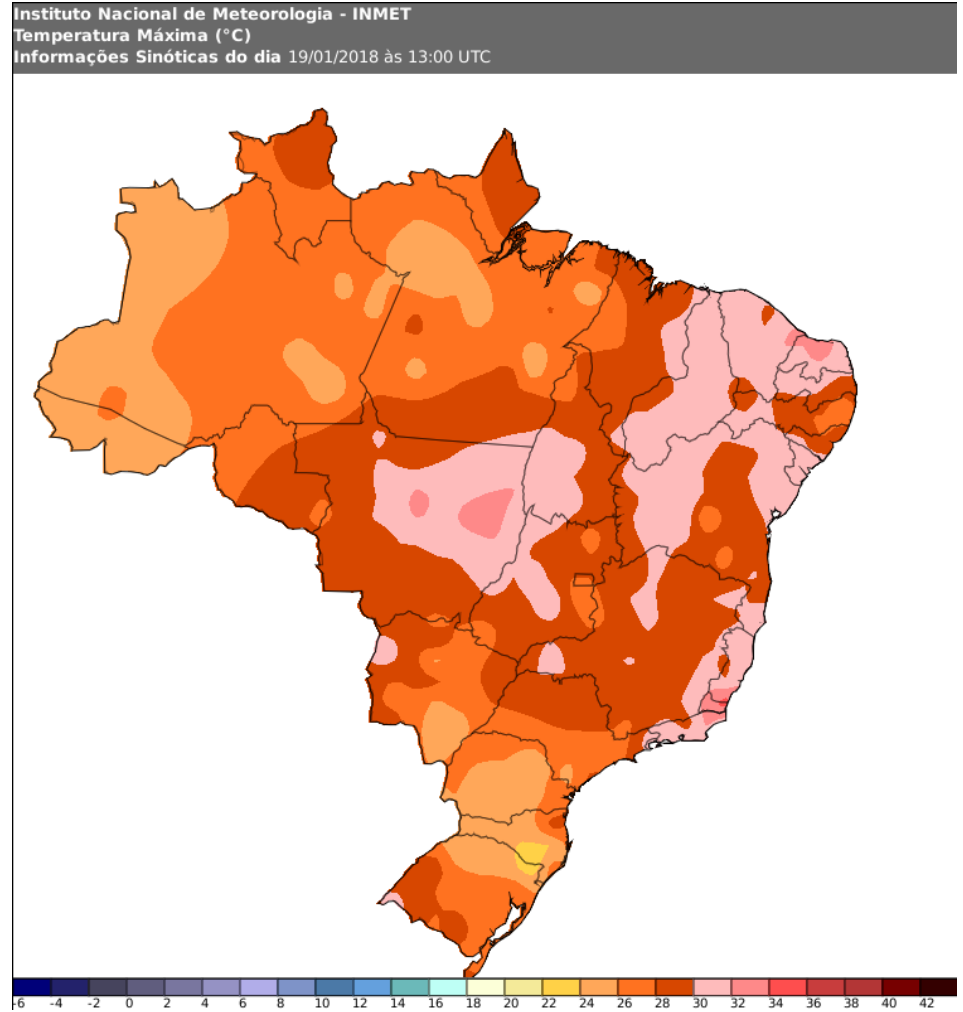
MAX TEMPS JAN 18

TEMPERATURAS MAXIMAS

18 de Enero de 2018



Servicio Meteorológico Nacional

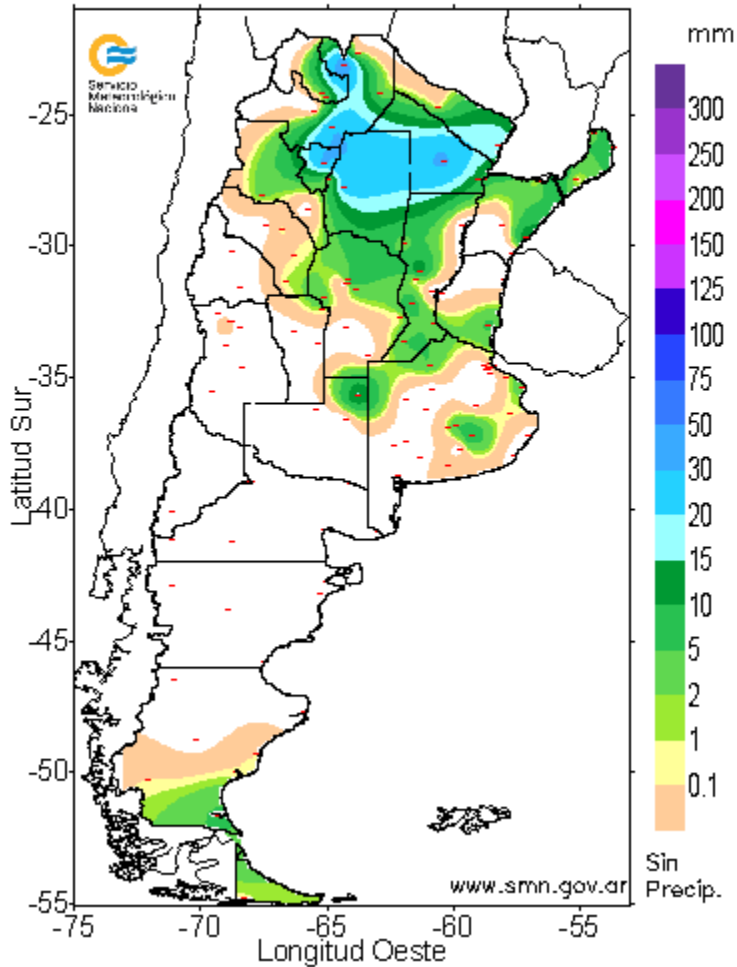


RAINFALL JAN 17

Servicio Meteorológico Nacional

PRECIPITACION (EN MILIMETROS) ACUMULADA EN 24 HORAS

Los valores corresponden al periodo comprendido entre las
9 hs. del 17 / 01 / 2018 y las 9 hs. del 18 / 01 / 2018

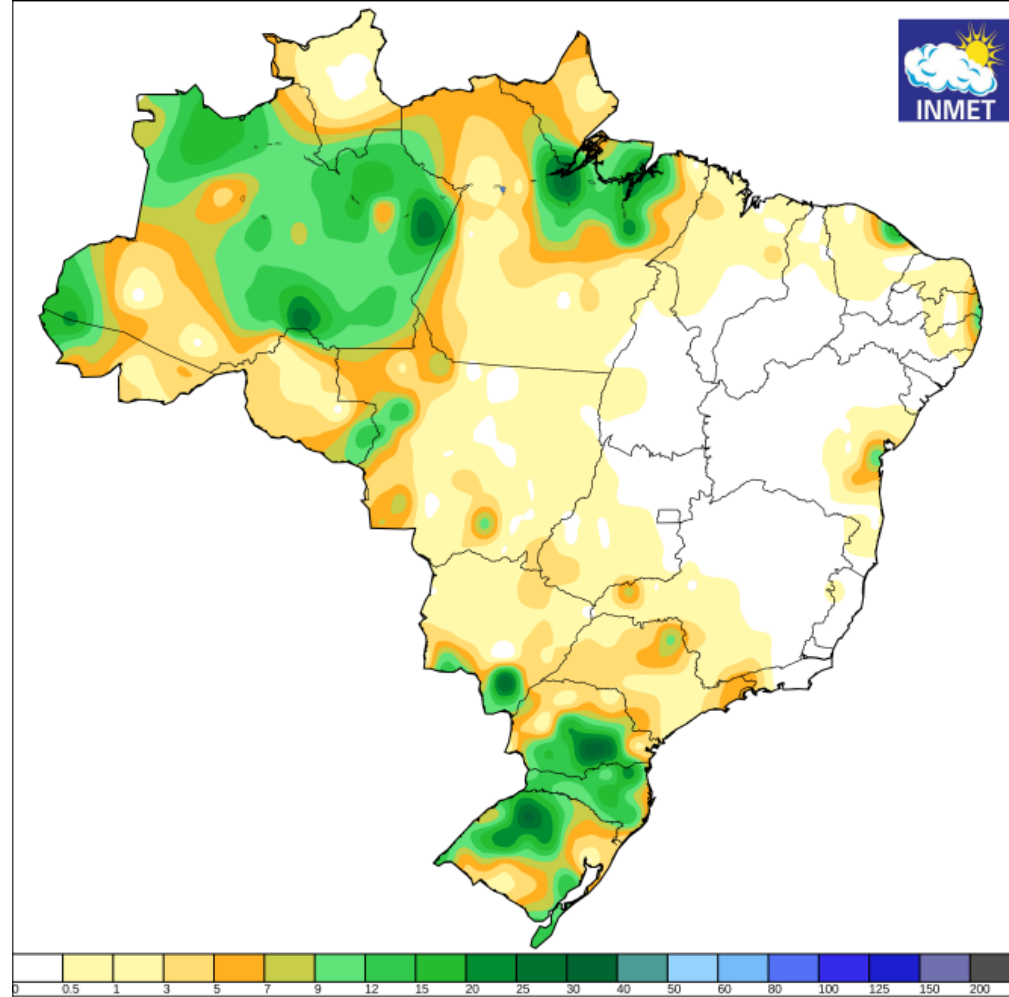


RAINFALL JAN 17

Instituto Nacional de Meteorologia - INMET

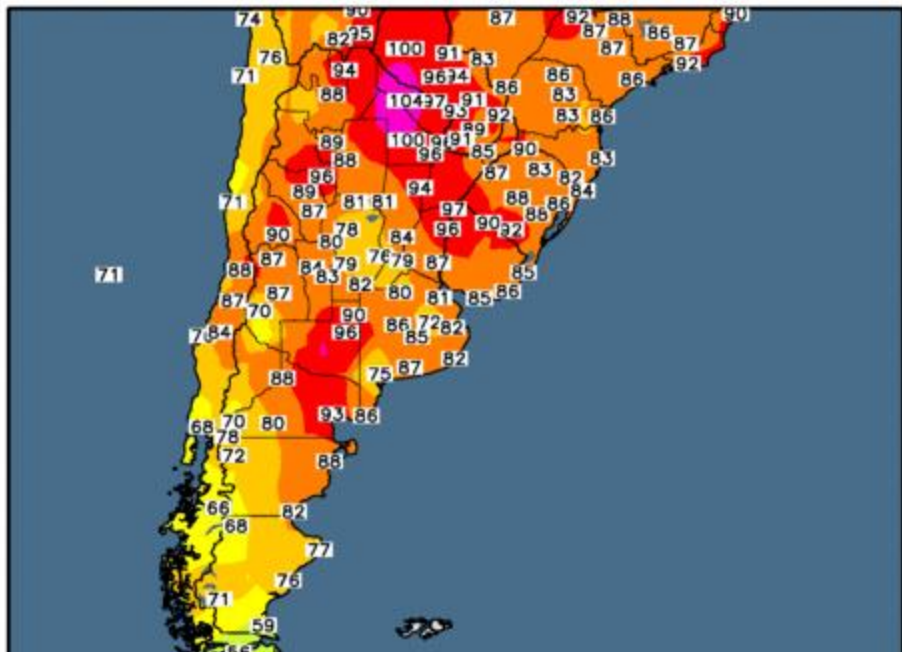
Precipitação Acumulada em 24 horas

Mapa do dia 18/01/2018



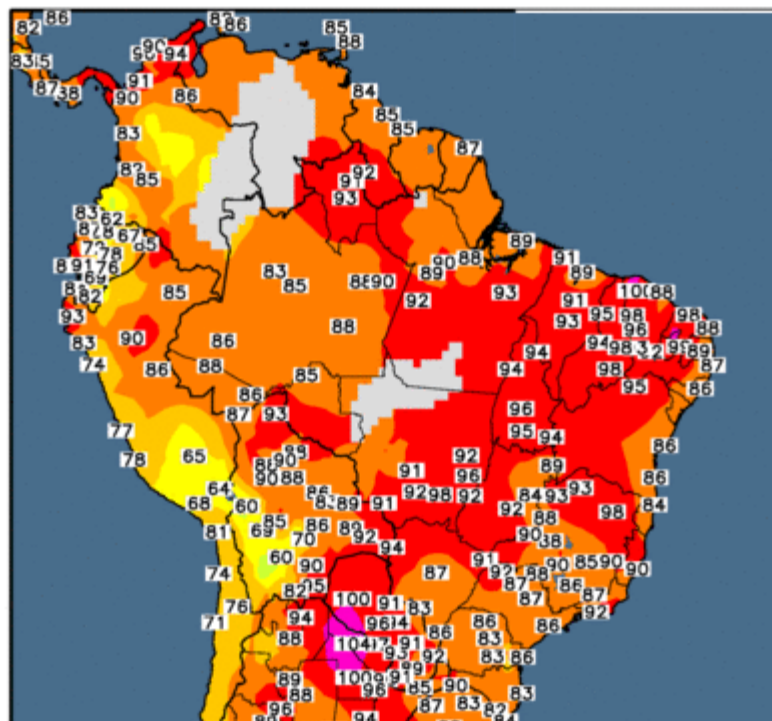
Observed Maximum Temperature (°F)

17 Jan 2018



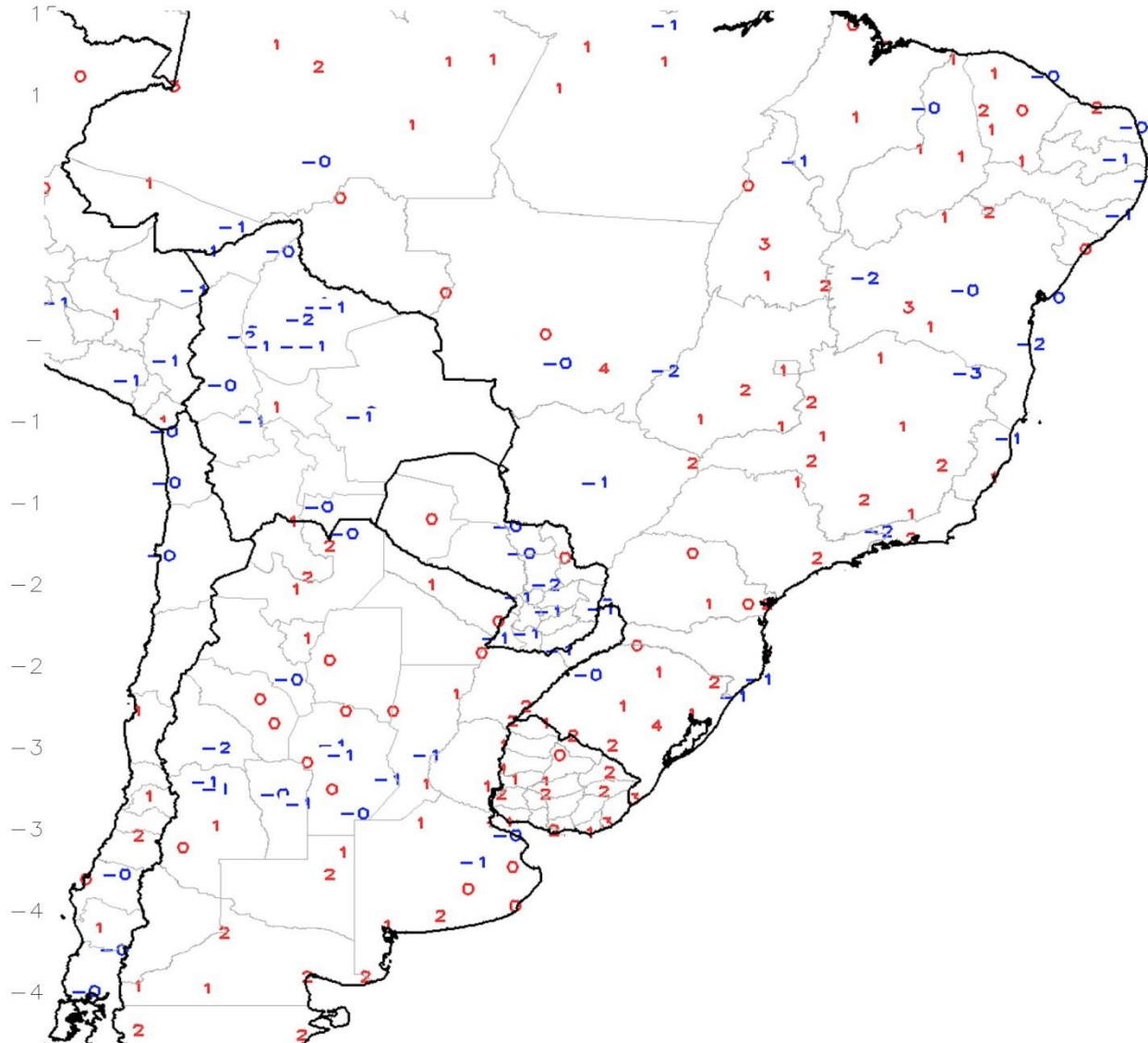
Observed Maximum Temperature (°F)

17 Jan 2018



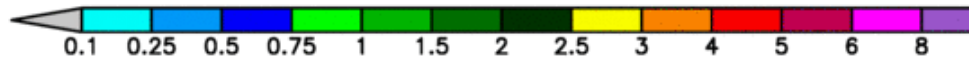
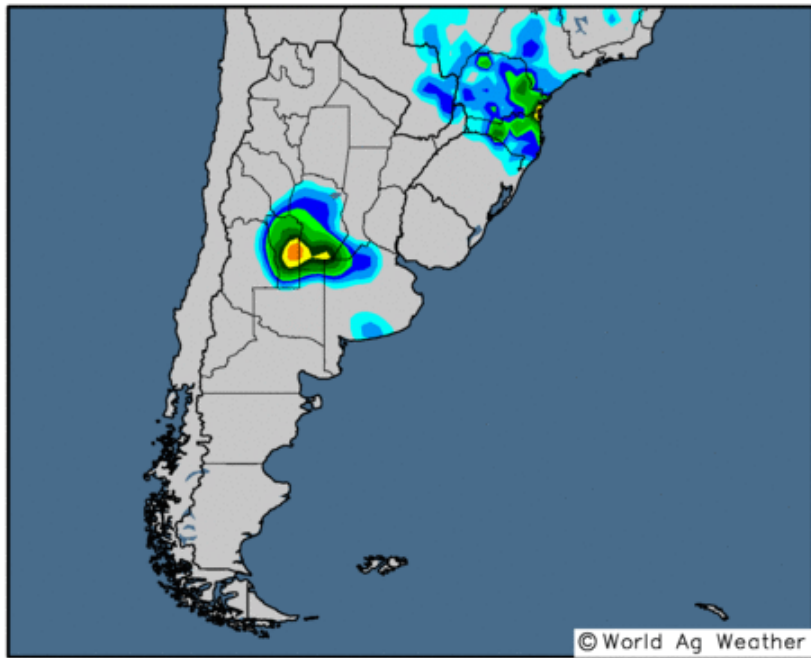
GTS Station Running 7-Day Average Temperature Anomaly (C)

Period: 11Jan2018 - 17Jan2018



24-hour Precipitation Analysis

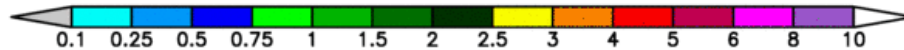
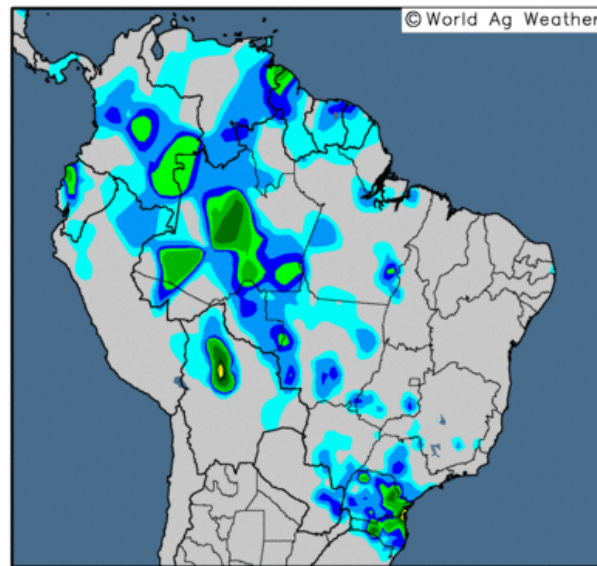
Observed precipitation (inches) through 12 UTC 17 Jan 2018



Map updates daily by approximately 20:30 UTC

24-hour Precipitation Analysis

Observed precipitation (inches) through 12 UTC 17 Jan 2018

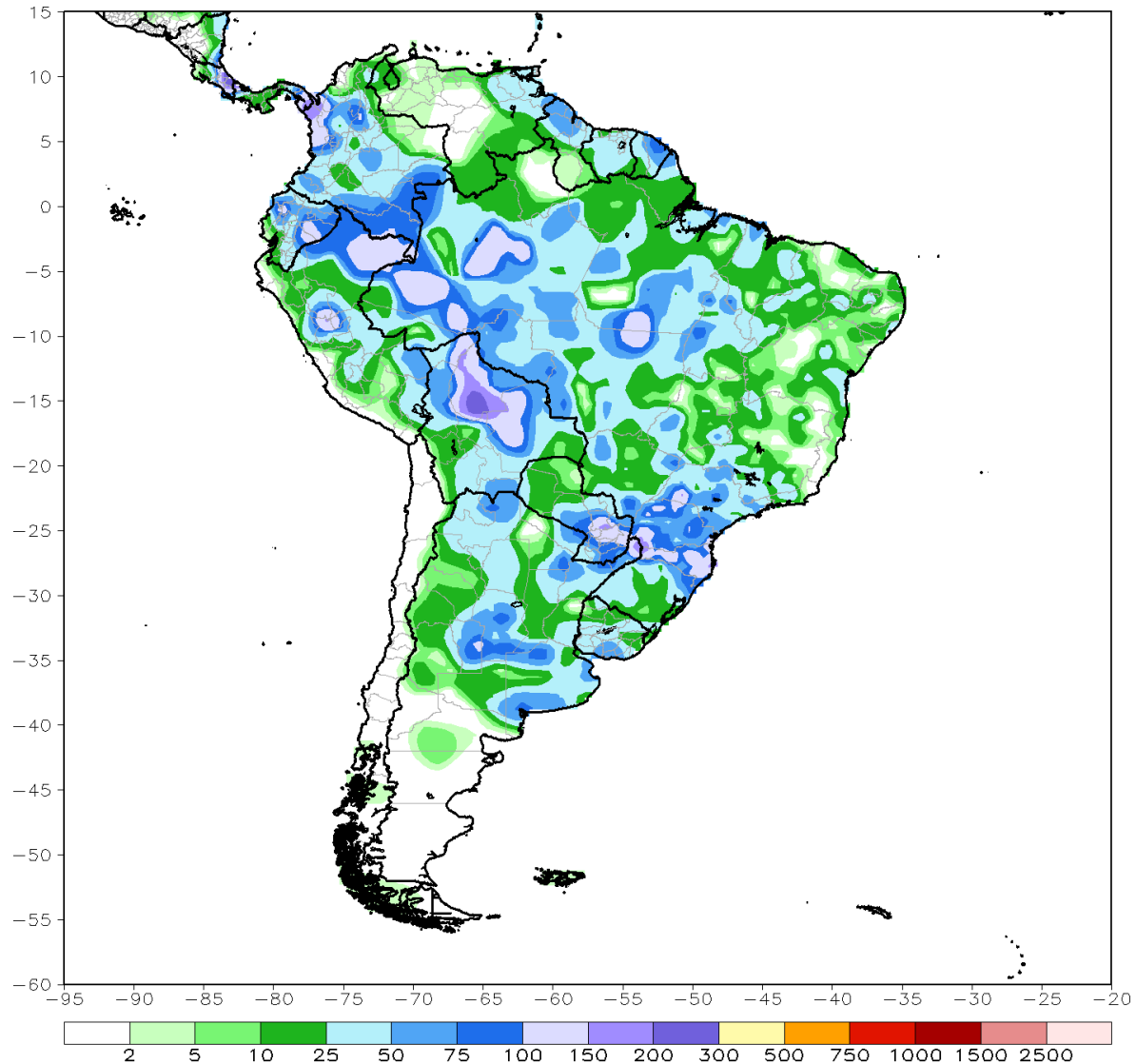


Map updates daily by approximately 20:30 UTC

TOTAL RAINFALL LAST 7 DAYS

CPC Unified Gauge 7-Day Total Rainfall (mm)

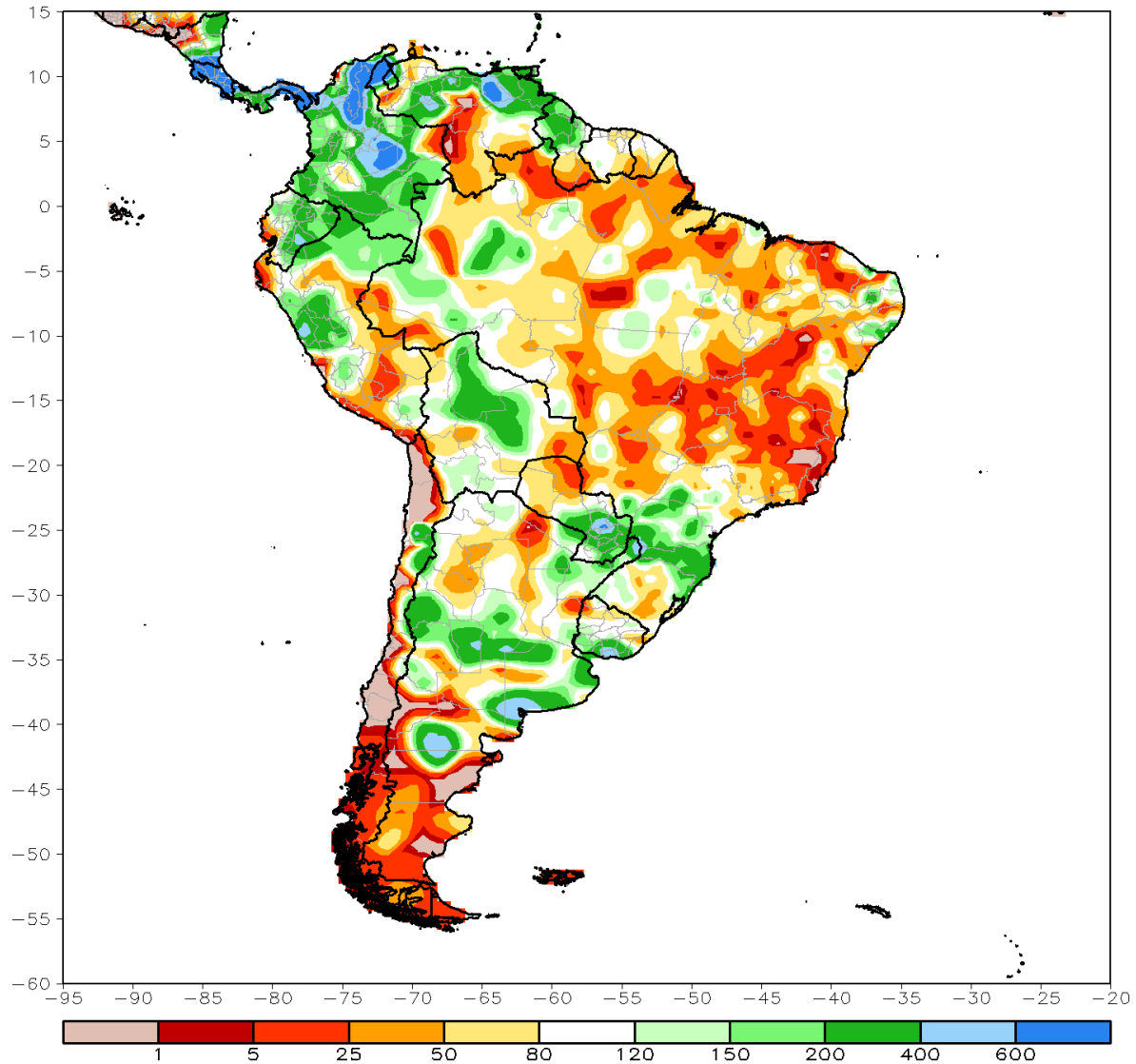
Period: 11Jan2018 - 17Jan2018



RAINFALL DEPARTURE FROM NORMAL PAST 7 DAYS

CPC Unified Gauge 7-Day Percent of Normal Rainfall (%)

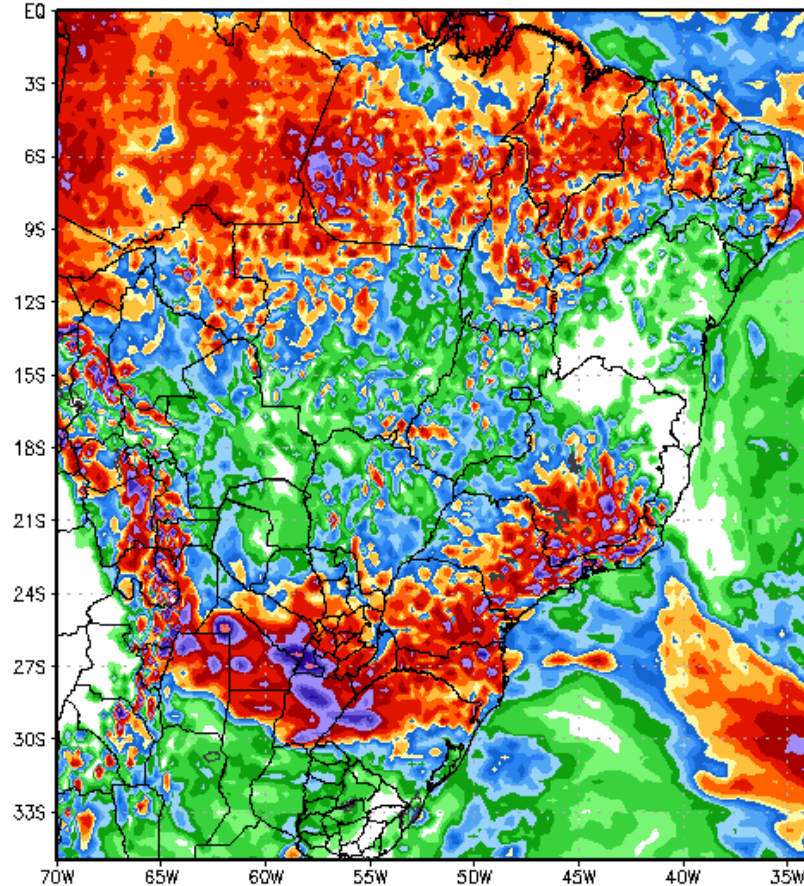
Period: 11Jan2018 - 17Jan2018



GFS RAINS NEXT 7 DAYS shows heavy rains 3-9"/75-225mm over northern ARG...se Paraguay into RGDS into Santa Catarina Sao Paulo southern Minas into southeast Brazil ...1-3"/25-75mm over Parana

168 Hour Total Precipitation (in)
Valid: 00z Fri 19 Jan 2018 - 00z Fri 26 Jan 2018

GFS-MAXRES
Hour: 0 - 168



Max: 14.2 in
Min: 0.0 in

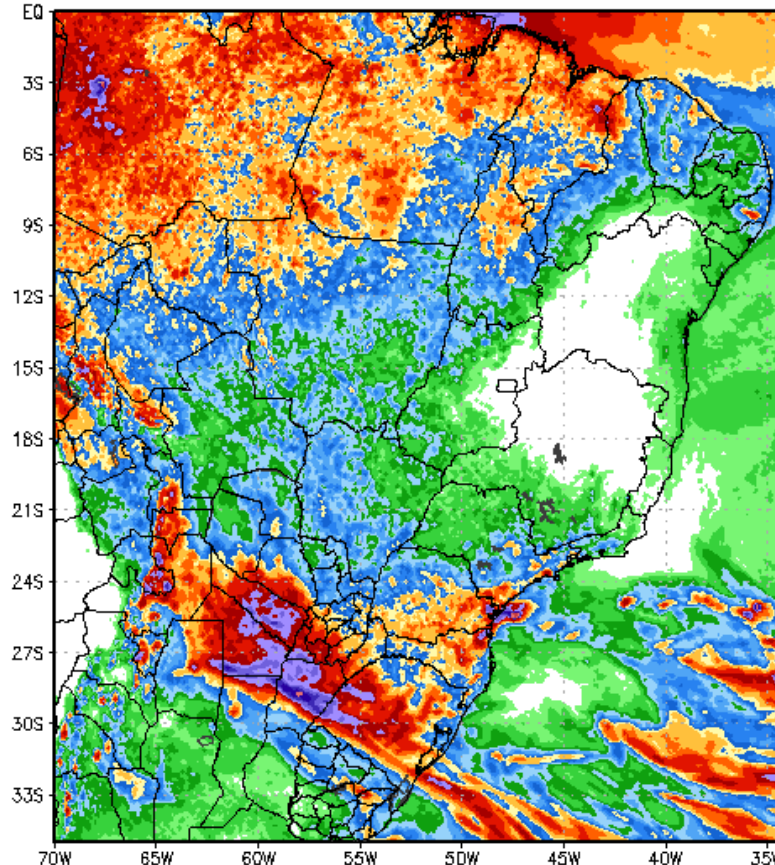
EUROPEAN NEXT 7 DAYS – also shows heavy rains 3-8"/7 5-200mm over northern ARG into RGDS into southeast Brazil ...1-3"/25-75mm over Parana ...1-2" / 25-50mm in MGDS

174 Hour Total Precipitation (in)

Valid: 00z Fri 19 Jan 2018 – 06z Fri 26 Jan 2018

ECMWF-MAXRES

Hour: 0 – 174

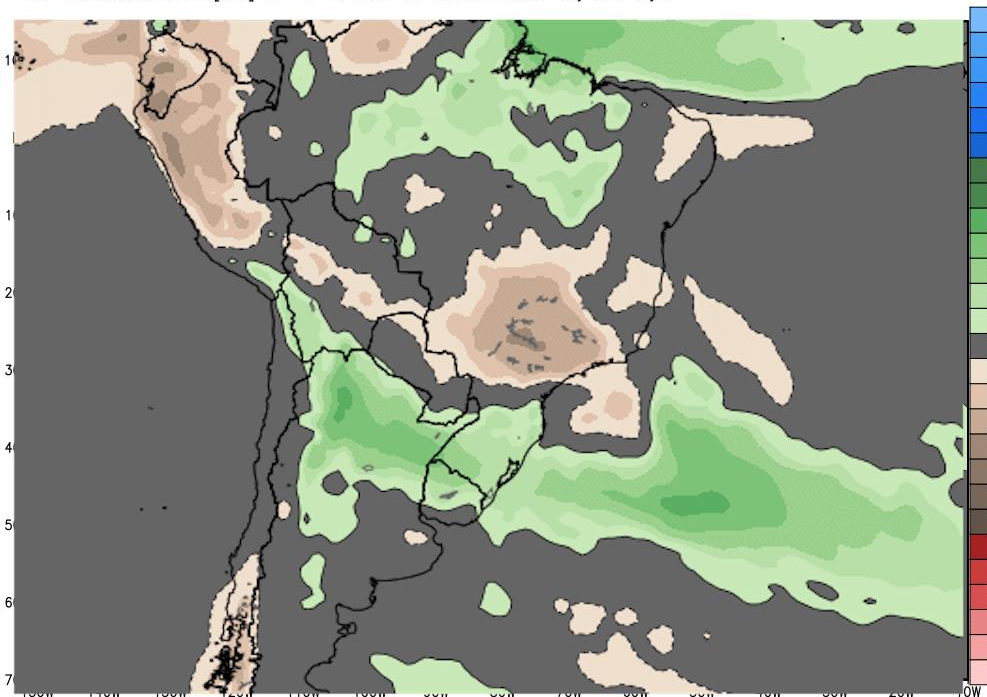


Max: 11.1 in
Min: 0.0 in

StormVistaWxModels.com

Init: 00z Fri 19 Jan 2018
2018-01-19-06:37

EUROPEAN WEEKLIES WEEK 2 WET over north half of ARG ...DRY SW / EAST CENTRAL BRAZIL

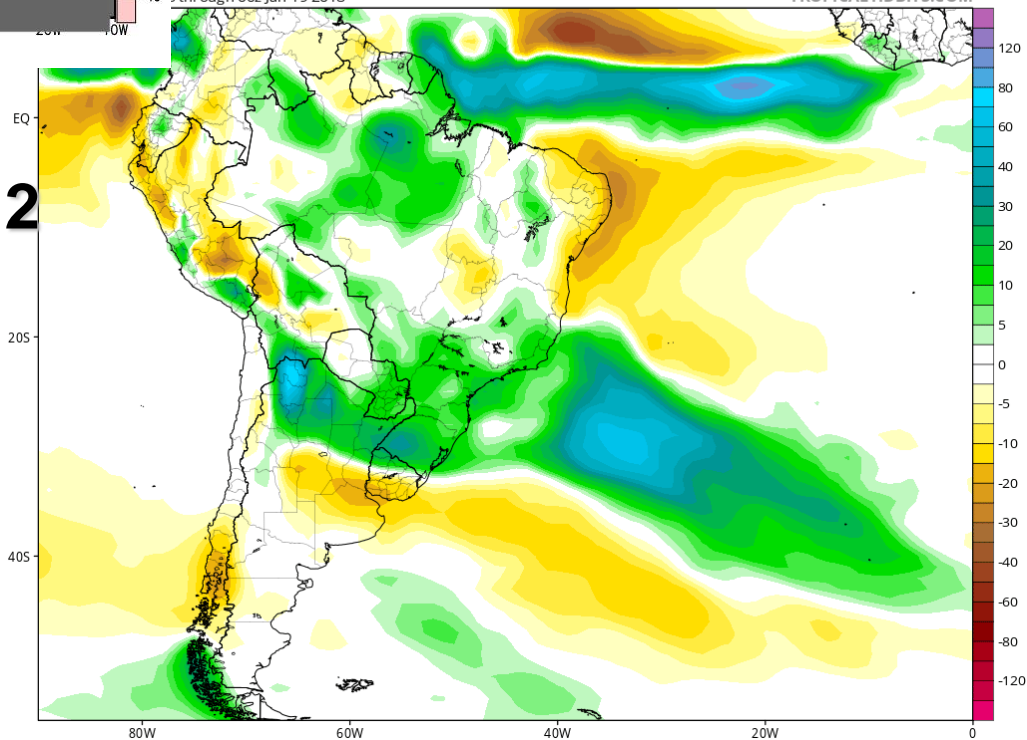


Accumulation between 00Z25JAN2018-00Z01FEB2018 | ECMWF EPS 1997-2016 Hindcast Climatology

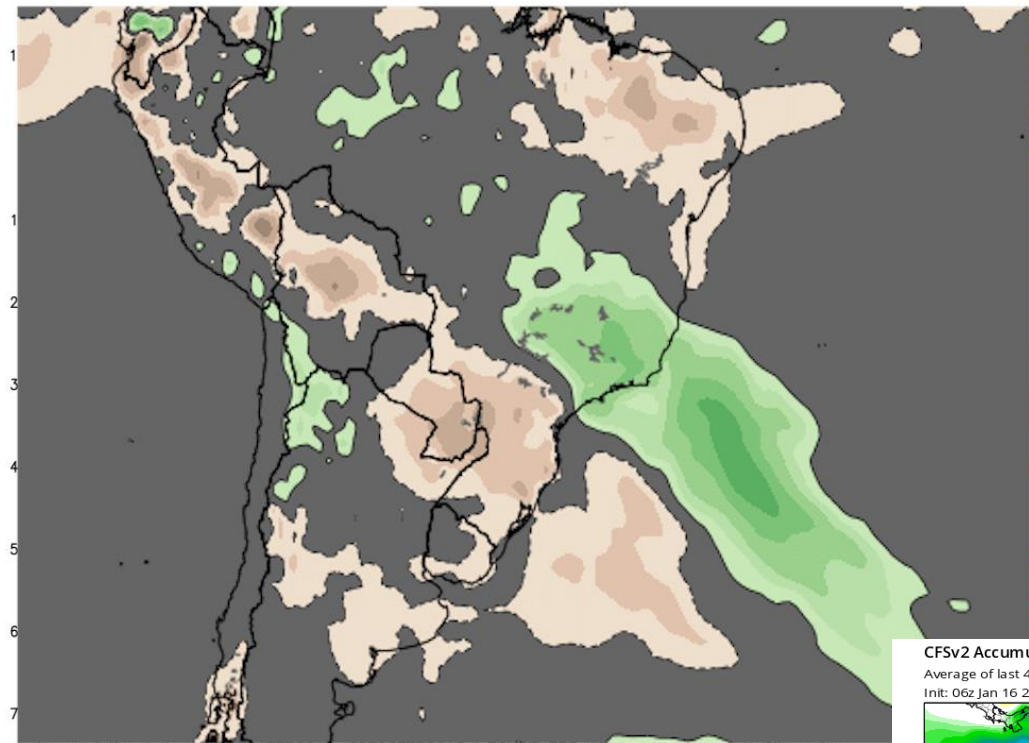
ted Precip. Anomaly (mm) from 00z26Jan2018 to 00z02Feb2018 (Days 8-14)
orecasts (12 runs x 4 members)
-10 3 through 00z Jan 19 2018

TROPICALTIDBITS.COM

CFS WEEKLIES WEEK 2 WET over north half of ARG ...DRY CENTRAL ARG WET SE BRAZIL



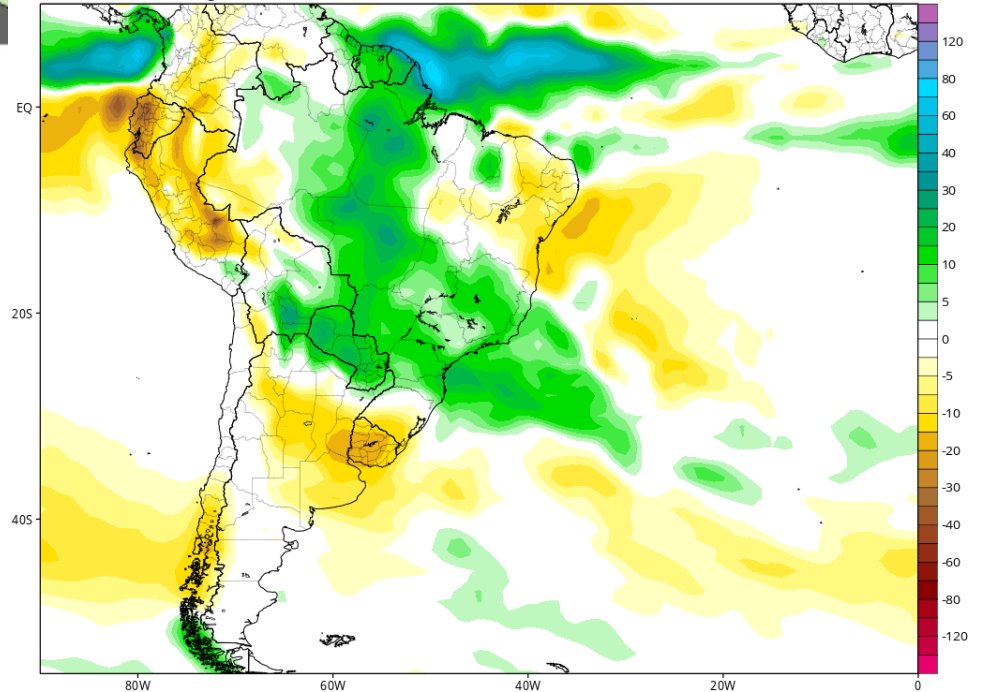
EUROPEAN WEEKLIES WEEK 3 ARG TURNS DRY AGAIN RAINS SHIFT INTO EAST CENTRAL BRAZIL



Accumulation between 00Z01FEB2018-00Z08FEB2018 | ECMWF EPS 1997-2016 Hindcast Climatology

CFSv2 Accumulated Precip. Anomaly (mm) from 00z02Feb2018 to 00z09Feb2018 (Days 15-21)
Average of last 48 forecasts (12 runs x 4 members)
Init: 06z Jan 16 2018 through 00z Jan 19 2018

TROPICALTIDBITS.COM



CFS AGREES