



SOUTH AMERICA GRAIN WEATHER

12/11/17 OVERVIEW

SUMMARY

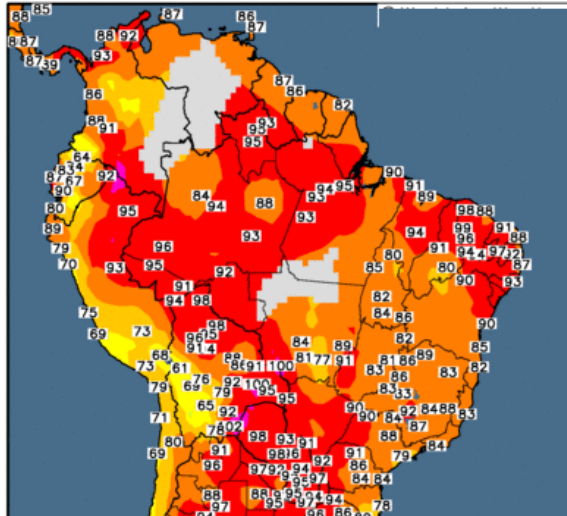
The prolonged cycle of extremely heavy rains over central and East Central Brazil into Mato Grosso which has been the dominant theme for the past few weeks is slowly coming to an end. The model data shows the next five days will be the end of the heavy rain but these next five days and also be the heaviest rains of the past few weeks especially over portions of Goiás and Tocantins. The models do agree that significant rains will begin to develop in the 6 to 10 day and continue into 11 to 15 day over most of Argentina. In Australia there are some signs of more typical summer time Aussie heat developing on the southwest areas which will migrate into southeastern Australia over next few days. Most areas look pretty dry and this will give the water logged areas of Victoria and eastern New South Wales a real chance to dry out during the next 10 days with generally below normal rainfall over the eastern third of the country and above Normal temps

BRAZIL TEMPS DEC 9-10

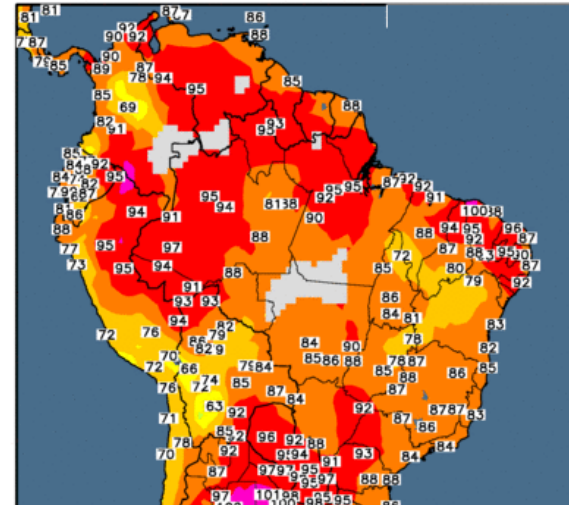
temperatures over most of Brazil both on December 9 and December 10 were pretty close to seasonal for this time of year. Most areas saw Max temperatures ranging between 88 and 92°/ 31-33° C. In Argentina the dry conditions have allowed the heat buildup and on December 9 many areas in central eastern and northern Argentina had max temperatures between 94 -98°/ 34-38c This trend continued on

December 9 the some areas reaching 100% 38c.

Observed Maximum Temperature (°F)
9 Dec 2017

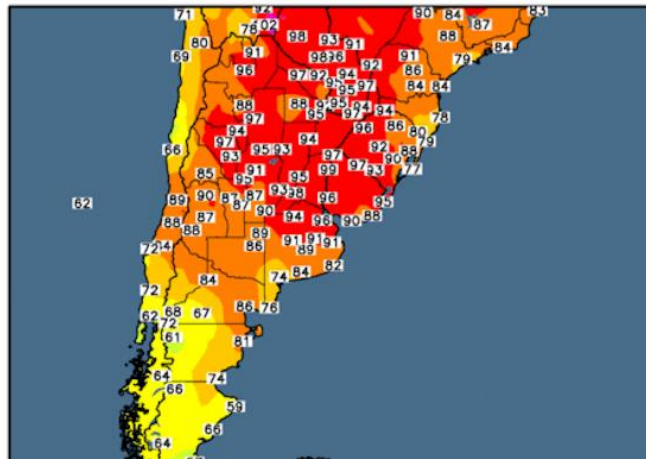


Observed Maximum Temperature (°F)
10 Dec 2017

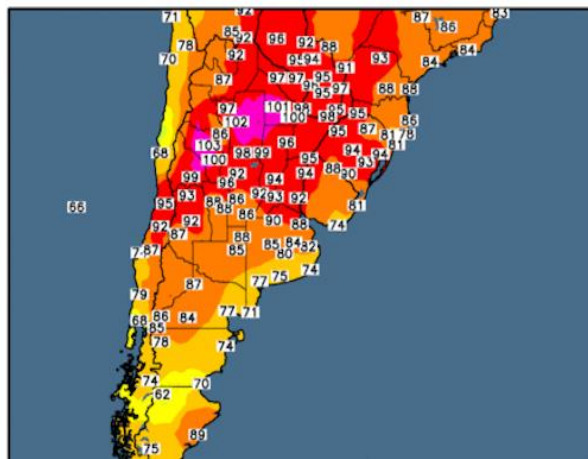


ARGENTINA TEMPS DEC 9 10

Observed Maximum Temperature (°F)
9 Dec 2017



Observed Maximum Temperature (°F)
10 Dec 2017

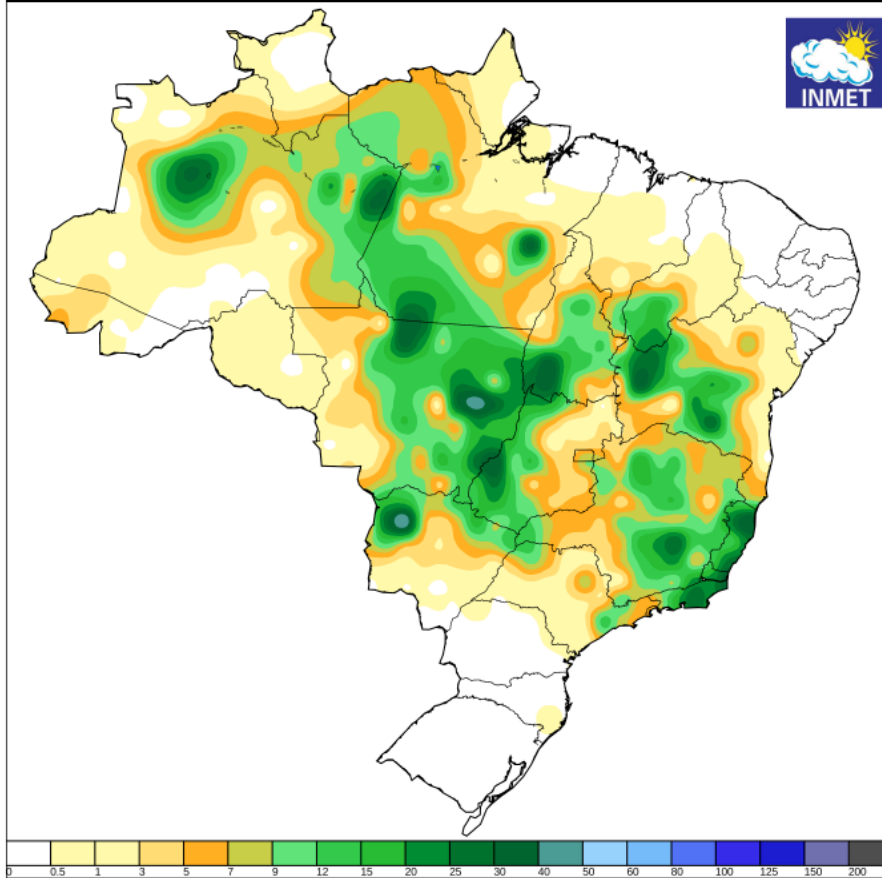


BRAZIL RAINFALL DEC 9 AND DEC 10 ending 0000 UTC

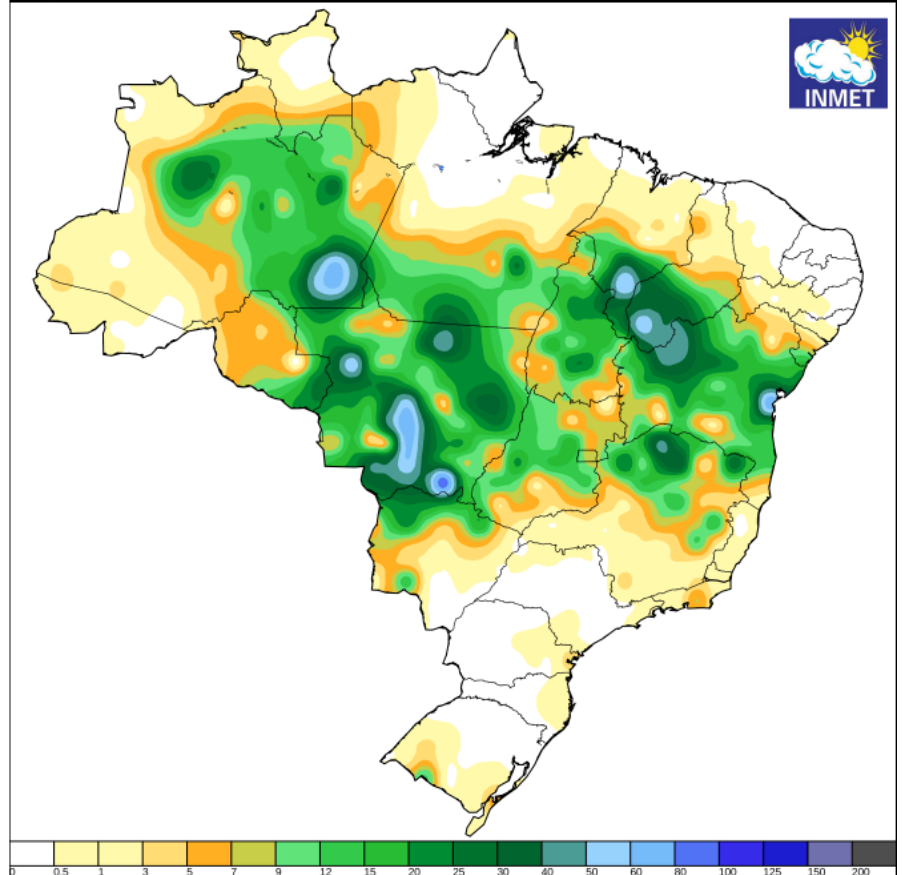
There was widespread moderate rain on December 9 across much of east central .. central and west central Brazil. Rainfall amounts range from 10-30mm/ 0.40-1.25" mm with 60% coverage over Minas Gerais southern Bahia southern eastern Mato Grosso and western half of Goiás and Tocantins..... All of southeastern Brazil was dry .

On December 10 a rain falls a bit more significant but almost the same locations. Rainfall amounts range from 10 to 50mm/ 0.40-2.0" with 60 70% coverage over northern Minas Gerais Bahia Tocantins Goiás and all of Mato Grosso –

Instituto Nacional de Meteorologia - INMET
Precipitação Acumulada em 24 horas
Mapa do dia 09/12/2017



Instituto Nacional de Meteorologia - INMET
Precipitação Acumulada em 24 horas
Mapa do dia 10/12/2017



ARGENTINA RAINFALL DEC 9 and DEC 10

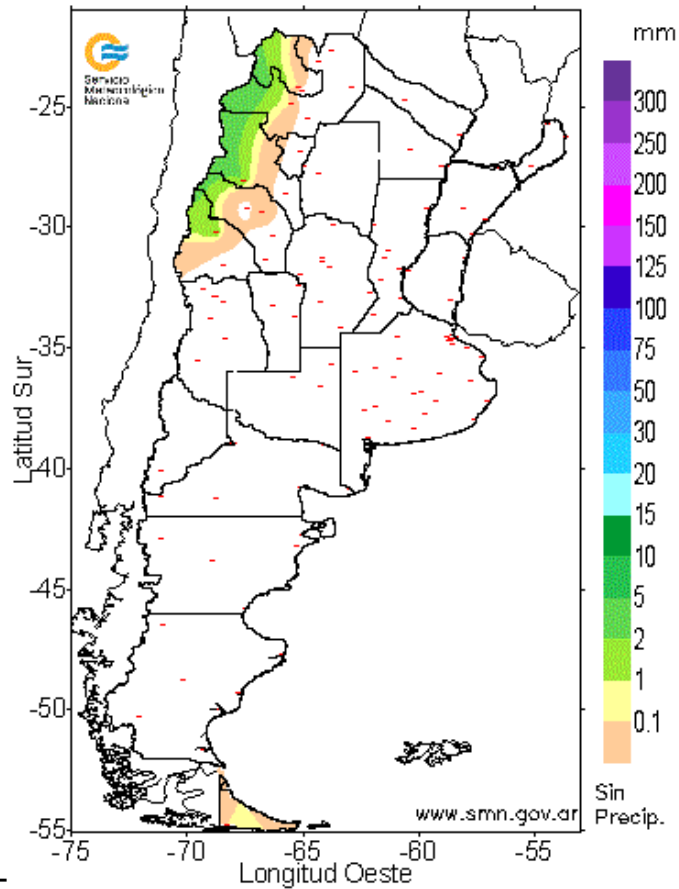
T

Servicio Meteorológico Nacional

PRECIPITACION (EN MILIMETROS) ACUMULADA EN 24 HORAS

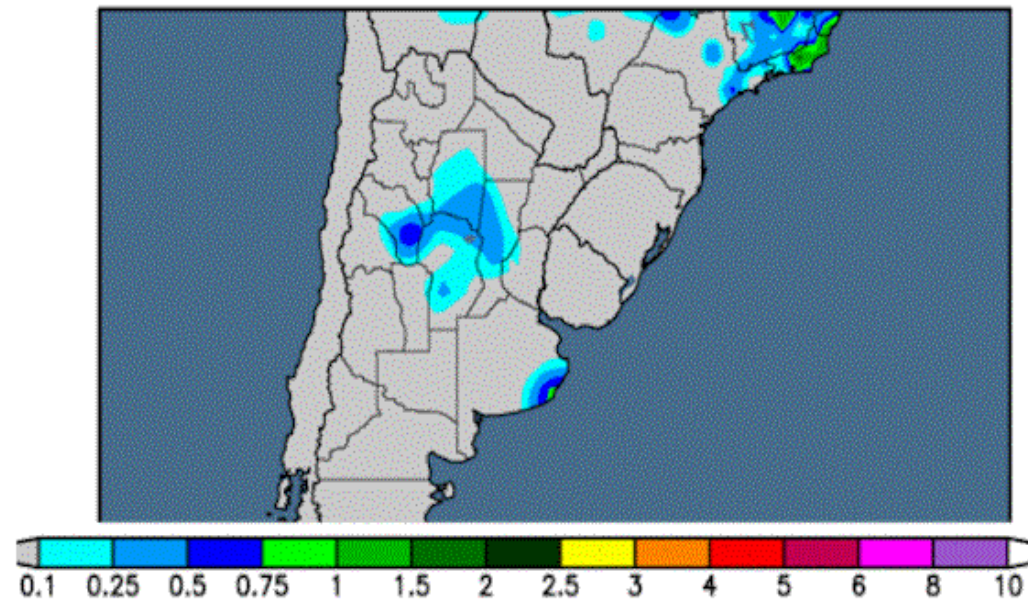
Los valores corresponden al periodo comprendido entre las

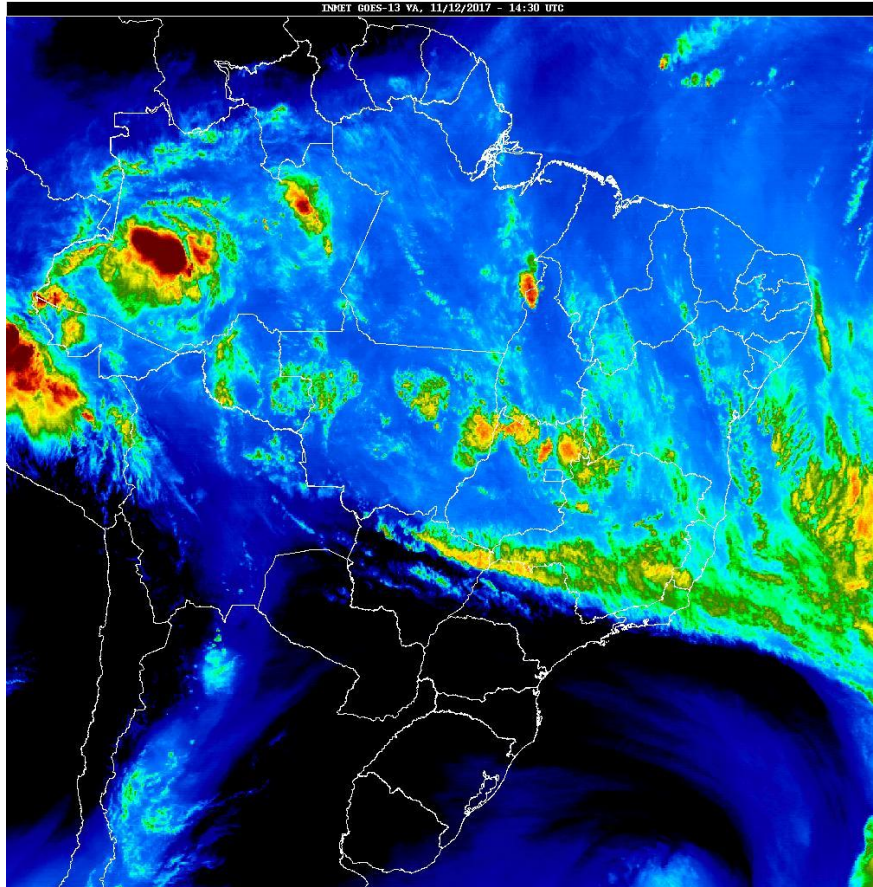
9 hs. del 10 / 12 / 2017 y las 9 hs. del 11 / 12 / 2017



24-hour Precipitation Analysis

Observed precipitation (inches) through 12 UTC 9 Dec 2017





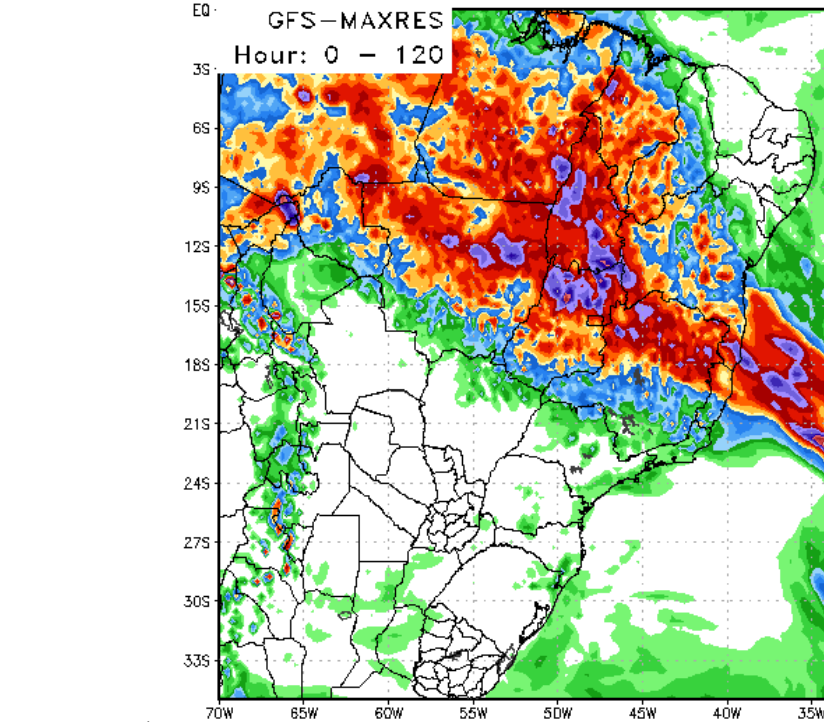
The midday satellite picture shows storms over eastern Mato Grosso northern Goias southern Minas Gerais and clear skies over all of southeast and southwest Brazil...Paraguay and all of Argentina.

DISCUSSION

The data is unchanged from late last week. As you can see all models show widespread significant heavy rains in a general west to east direction across northern portions of Minas Gerais far southern Bahia northern Goias all of Tocantins and northern Mato Grosso.... with amounts 3 to 8"/ 75-200mm with isolated amounts to 10"/ 250mm over portions of Goias and Tocantins. What is most impressive is that these heavy rainfall amounts here and show open the European model which of course is normally drier than the GFS. To the south all of

southwestern and southeastern Brazil remains completely dry as is Paraguay and all of Argentina

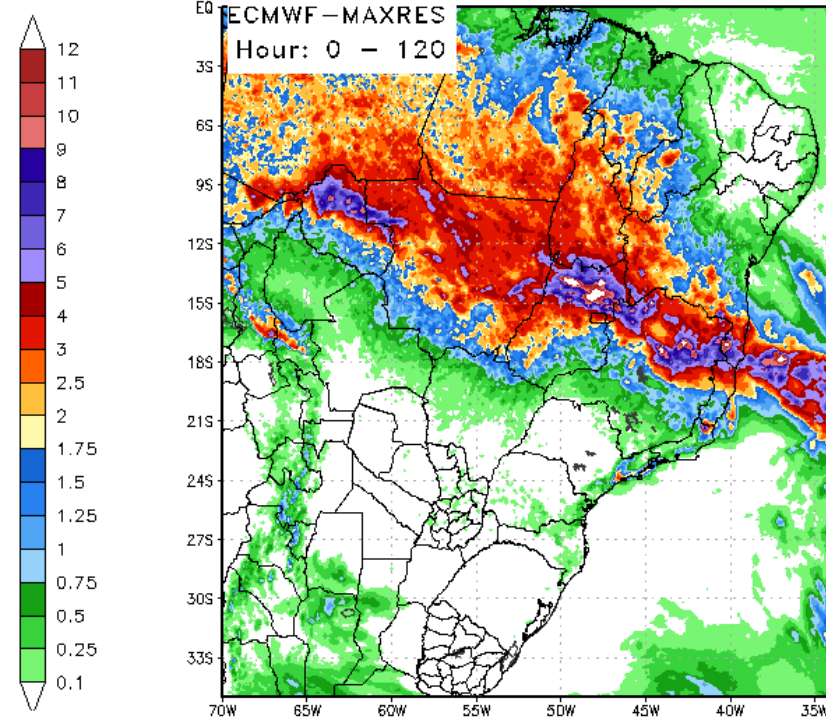
120 Hour Total Precipitation (in)
Valid: 00z Mon 11 Dec 2017 – 00z Sat 16 Dec 2017



Max: 13.1 in
Min: 0.0 in

StormVistaWxModels.com

120 Hour Total Precipitation (in)
Valid: 00z Mon 11 Dec 2017 – 00z Sat 16 Dec 2017

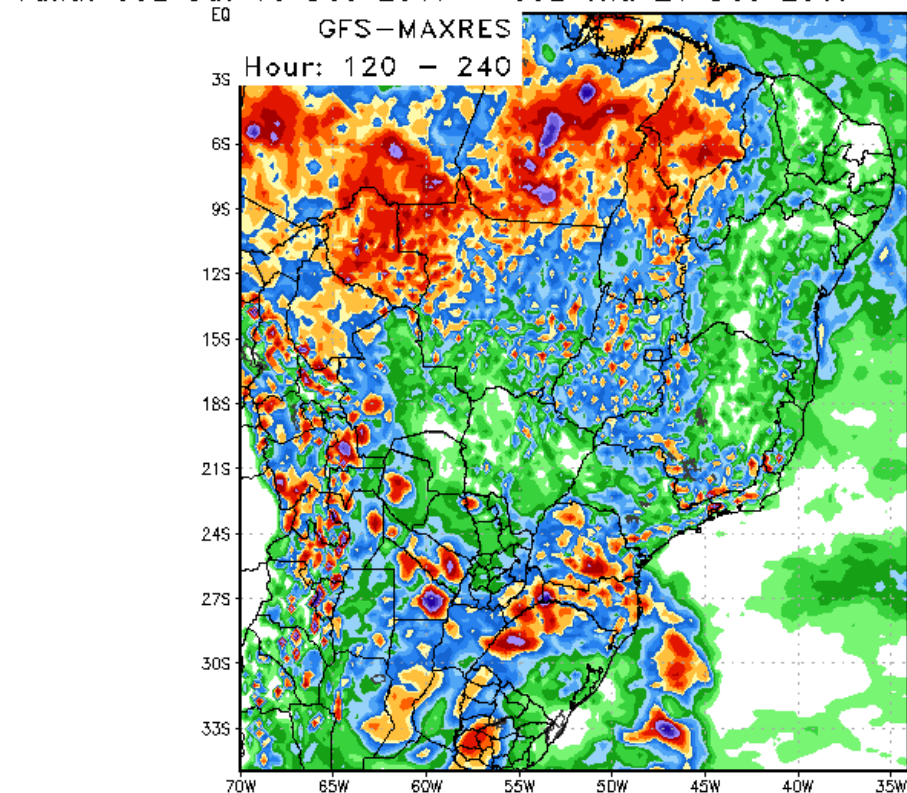


Max: 17.1 in
Min: 0.0 in

StormVistaWxModels.com

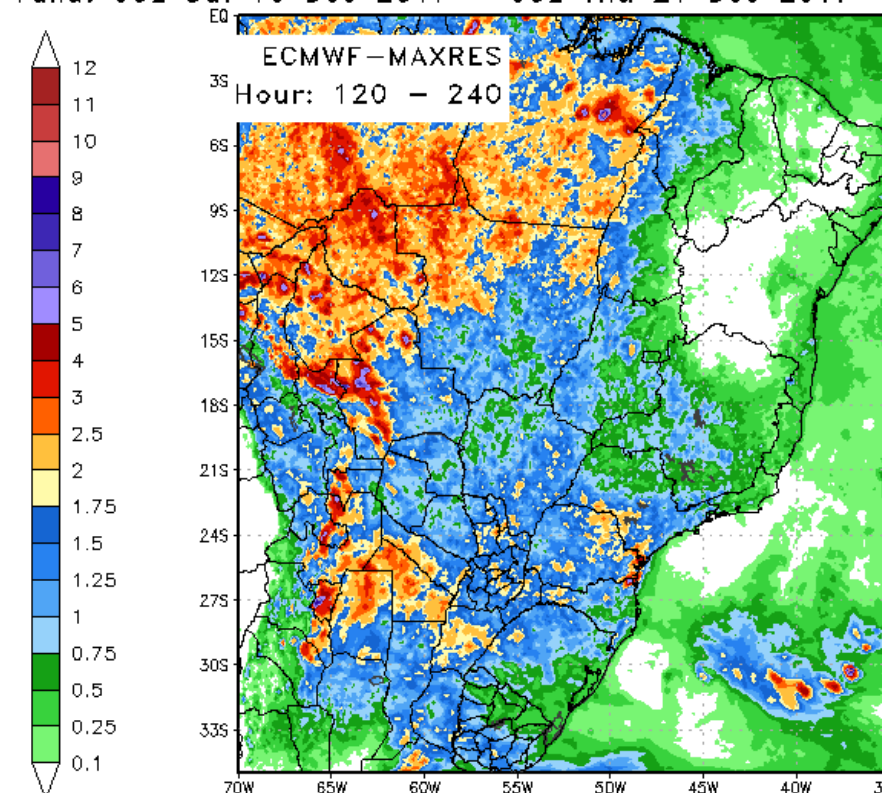
The model agreement in the 6-10day th th is only fair with some differences. Both models show the heavy rains breaking up over most of western central and east central Brazil and shifting to a much more typical 1.0-2.5"/ 25-60mm rains with coverage range between 40 to 60% over portions of Mato Grosso Goias southern Minas Gerais . To the south we seen increasing rains over southeastern Brazil and much of central and Northern Argentina. The rains appear in the heaviest over southeastern Brazil with amounts up to 1-3"/ 25-75mm and 70% coverage in Parana Santa Catarina and RGDS and 1.0-2.5"/ 25-60mm over 70% of central eastern and northern Argentina

120 Hour Total Precipitation (in)
Valid: 00z Sat 16 Dec 2017 – 00z Thu 21 Dec 2017



StormVistaWxModels.com

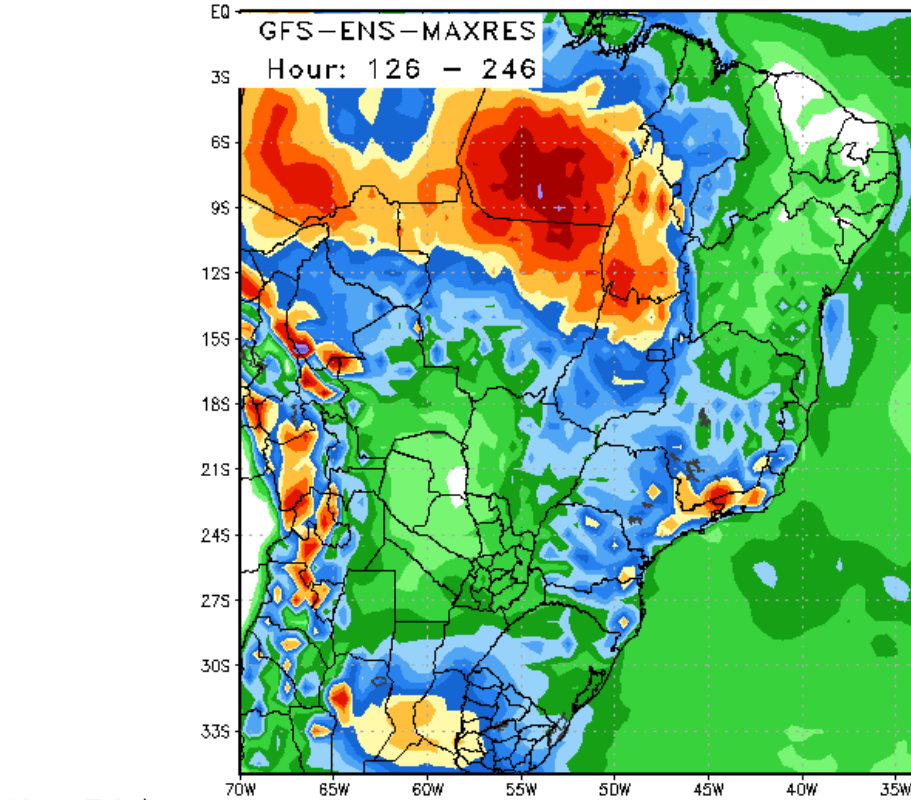
120 Hour Total Precipitation (in)
Valid: 00z Sat 16 Dec 2017 – 00z Thu 21 Dec 2017



StormVistaWxModels.com

6-1DAY ENSEMBLES The GFS and EURO ensembles are little different in that they continue more significant rain over the northern half of Mato Grosso --- the GFS ensemble has more significant rains over Tocantins than what we see on the European. Both models do show significant rains over much of central Argentina but the European has more rain as you can see over northern Argentina ...Paraguay and southeastern Brazil and the GFS does

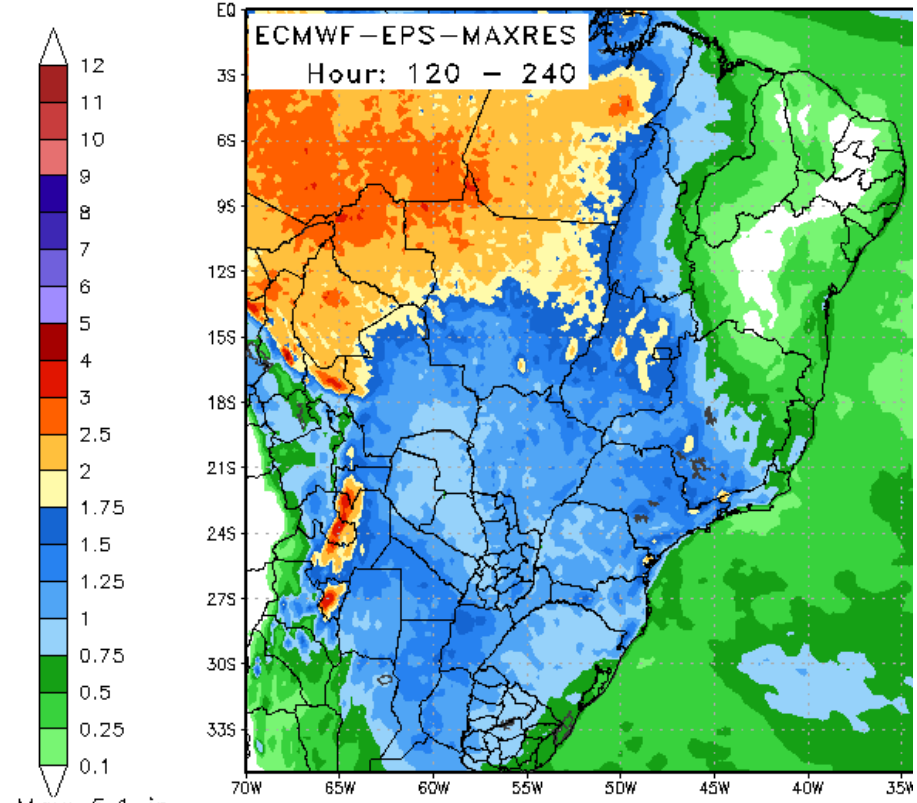
120 Hour Total Precipitation (in)
Valid: 06z Sat 16 Dec 2017 – 06z Thu 21 Dec 2017



Max: 7.1 in
Min: 0.0 in

StormVistaWxModels.com

120 Hour Total Precipitation (in)
Valid: 00z Sat 16 Dec 2017 – 00z Thu 21 Dec 2017



Max: 5.1 in
Min: 0.0 in

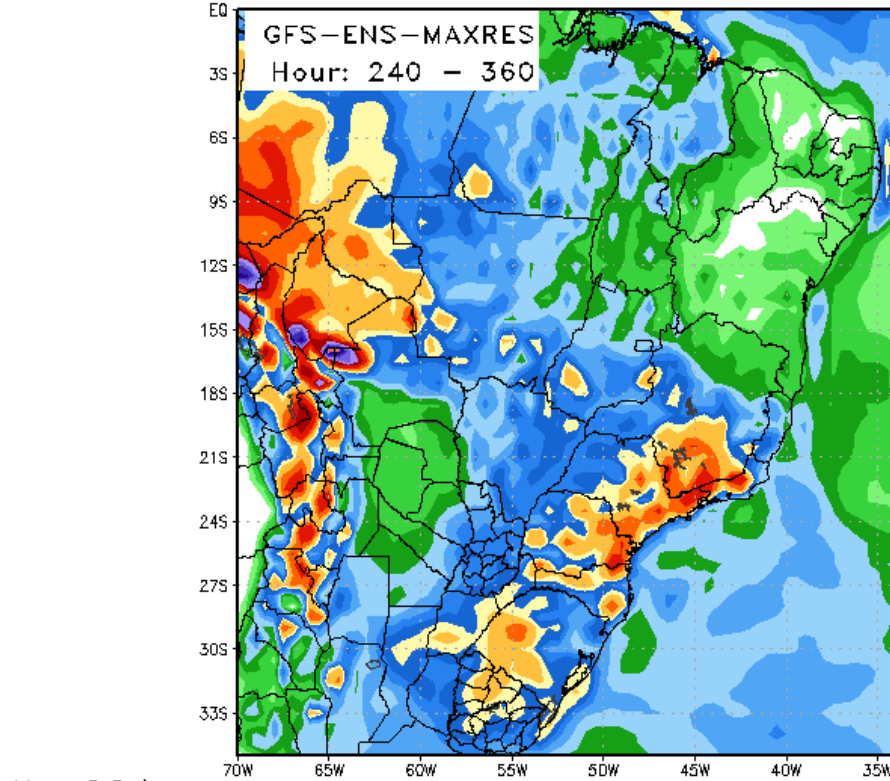
StormVistaWxModels.com

11-15 DAY ENSEMBLES

Both models continue show significant rains over central eastern and Northern Argentina into southeastern Brazil with rainfall amounts ranging from 1-2"/ 25-50mm with 70% coverage in all of these areas in Argentina. That being said both models show concentration of 1-3"/ 25-75mm rains over Santa Catarina Parana Sao Paulo MGDS southern Goias southern Minas Gerais. If you notice however the

GFS has these rains confined to the coastal areas where the European 1 to 3 inch rain area has a much higher coverage of 75% and covers deep into the interior portions of southern and southwestern Brazil.

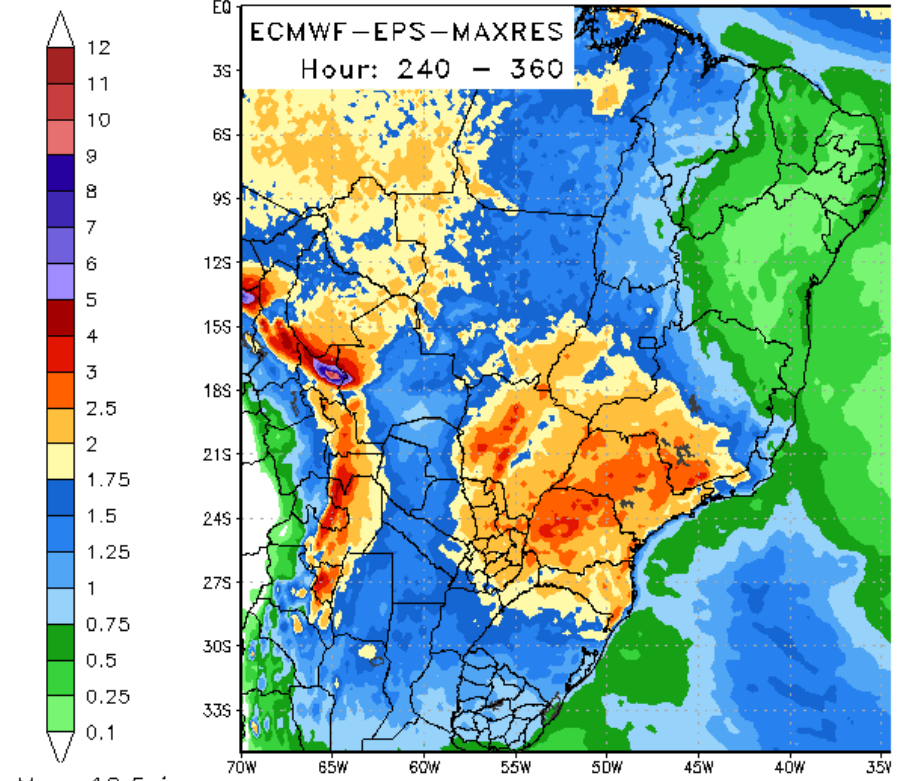
120 Hour Total Precipitation (in)
Valid: 00z Thu 21 Dec 2017 – 00z Tue 26 Dec 2017



Max: 9.9 in
Min: 0.0 in

StormVistaWxModels.com

120 Hour Total Precipitation (in)
Valid: 00z Thu 21 Dec 2017 – 00z Tue 26 Dec 2017



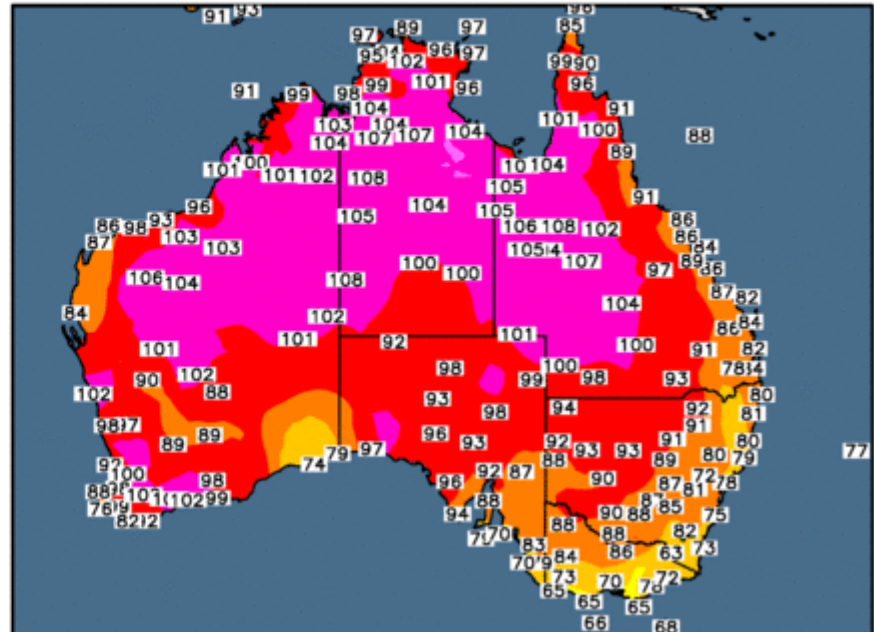
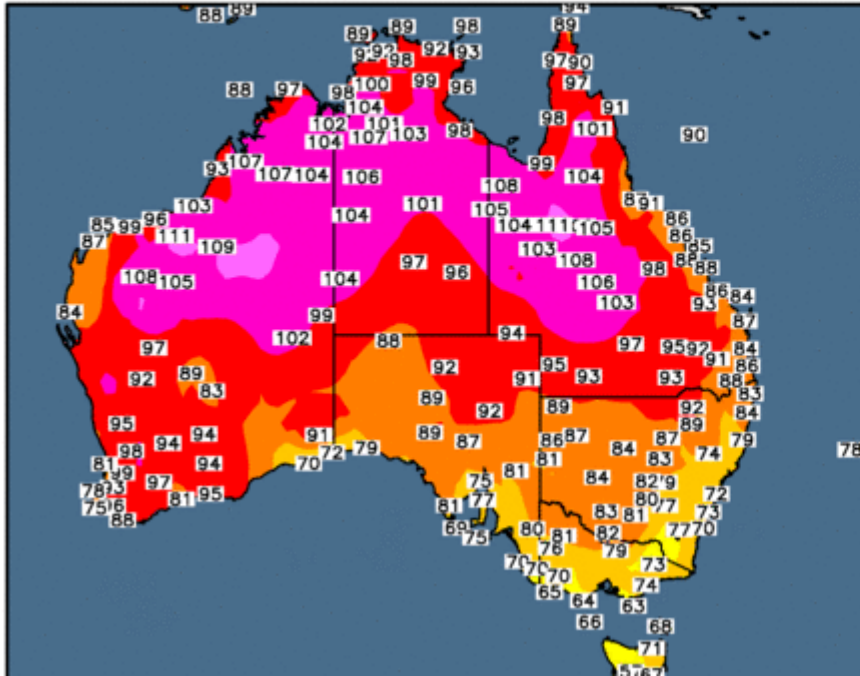
Max: 10.5 in
Min: -0.0 in

StormVistaWxModels.com

AUSTRALIAN GRAIN WX

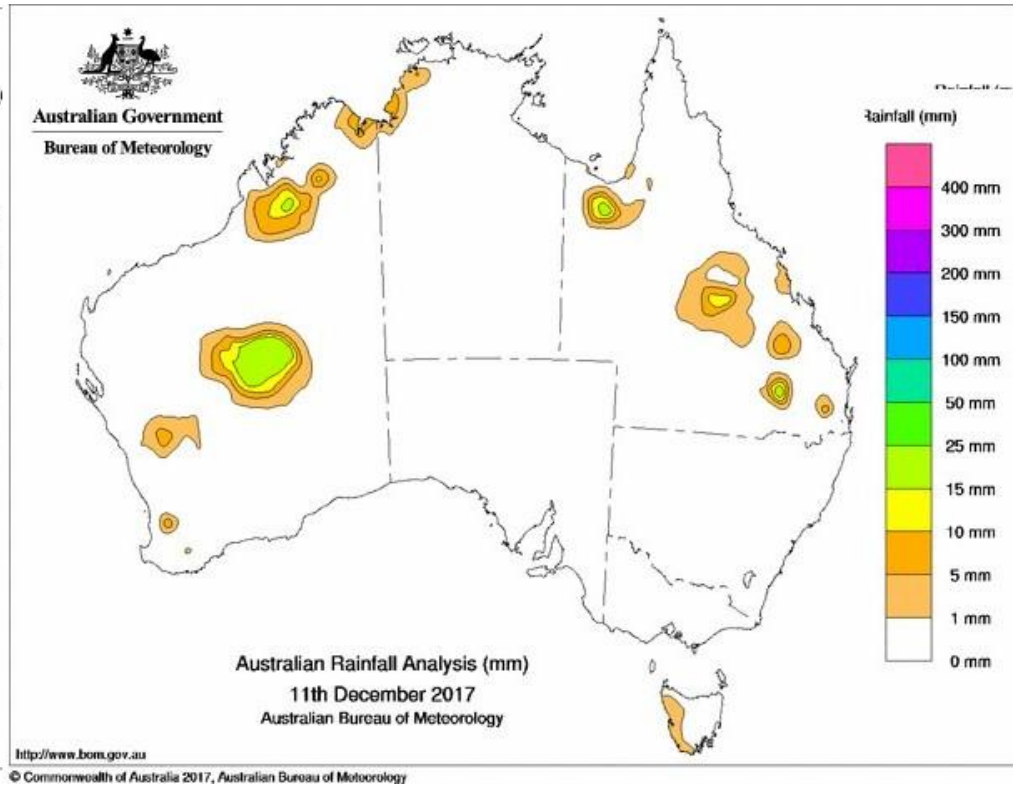
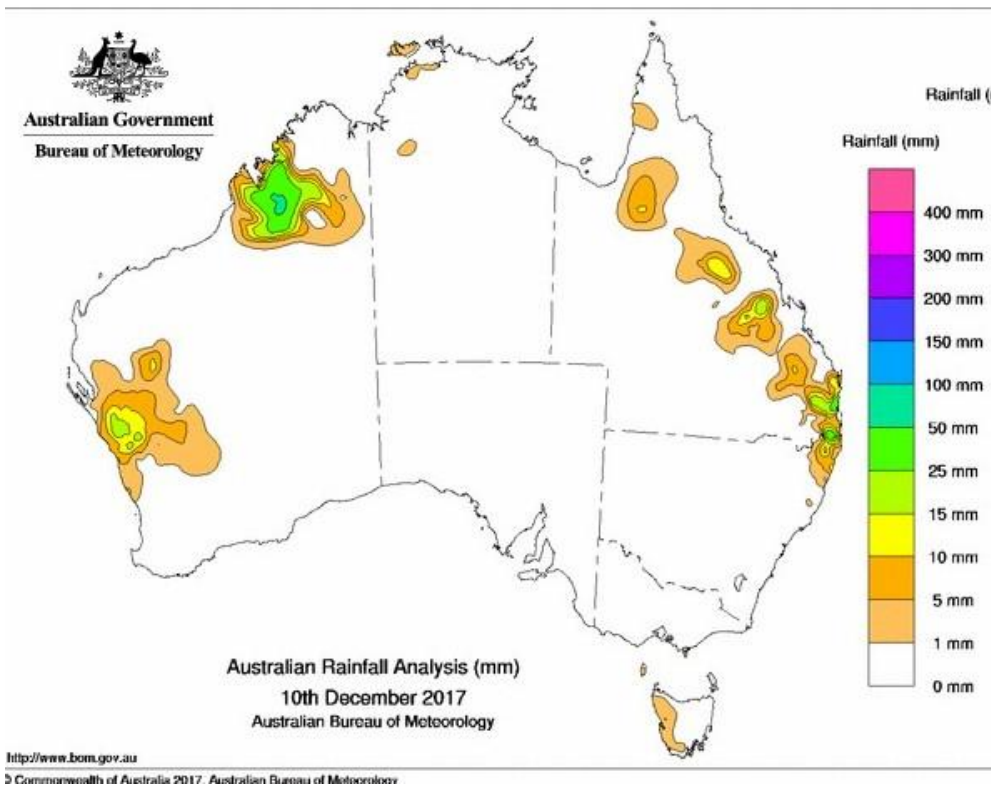
TEMPERATURE PAST 2 DAYS -- A finally seeing some heat over southwest Australia for the first time in the Australian Summer

Observed Maximum Temperature (°F) 9 Dec 2017 Observed Maximum Temperature (°F) 10 Dec 2017

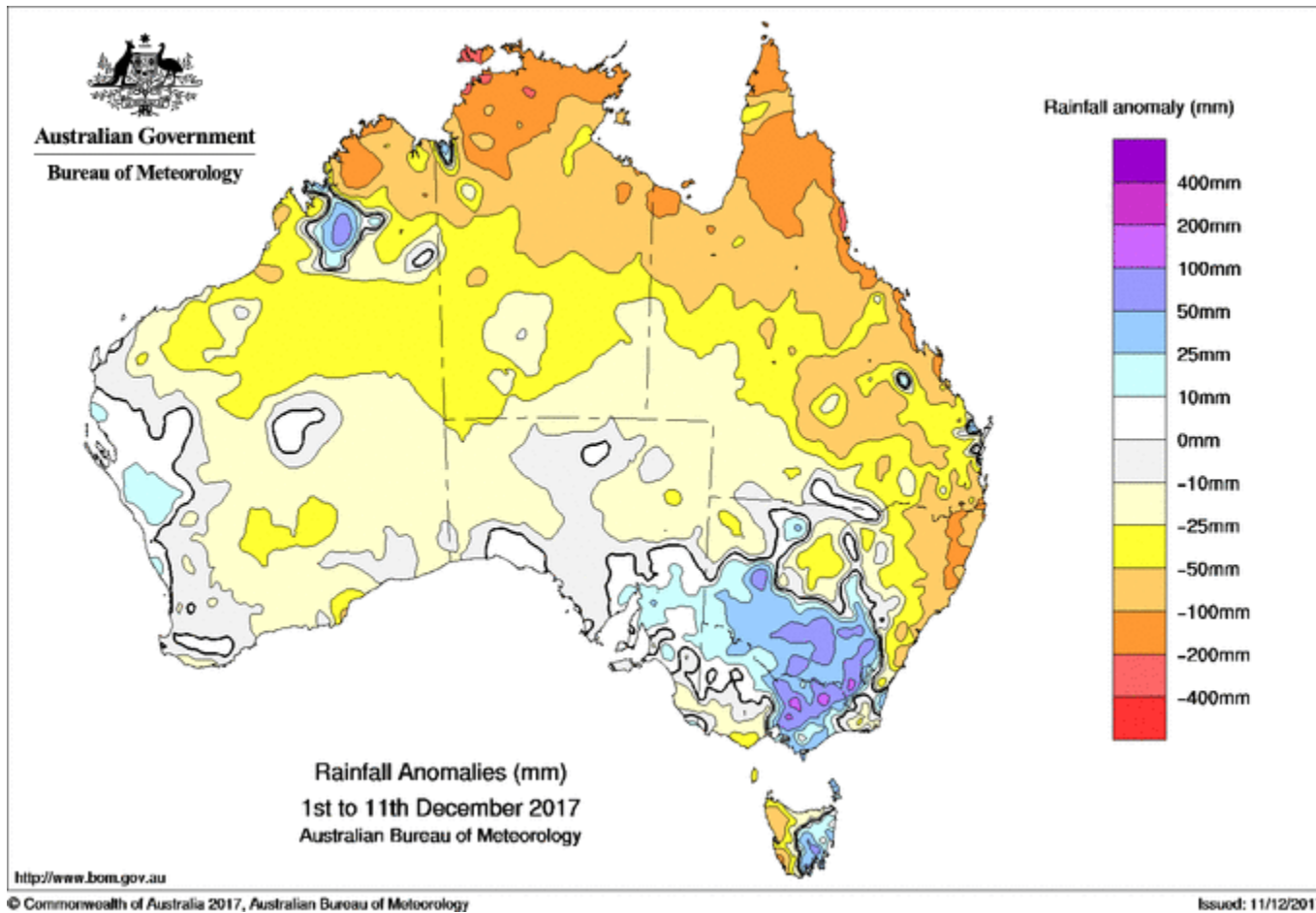


RAINFALL last 2 days - DEC 11 DEC 10

Last two days has featured a lot dry conditions especially over the previously wet portions of Victoria New South Wales and southeastern Queensland



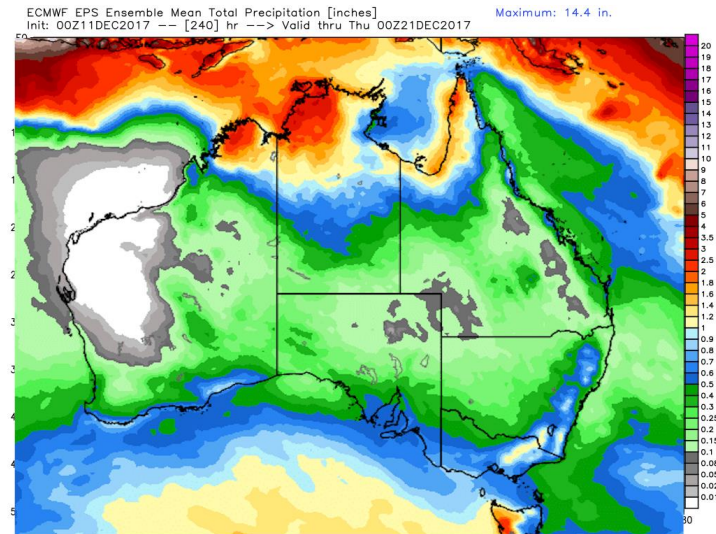
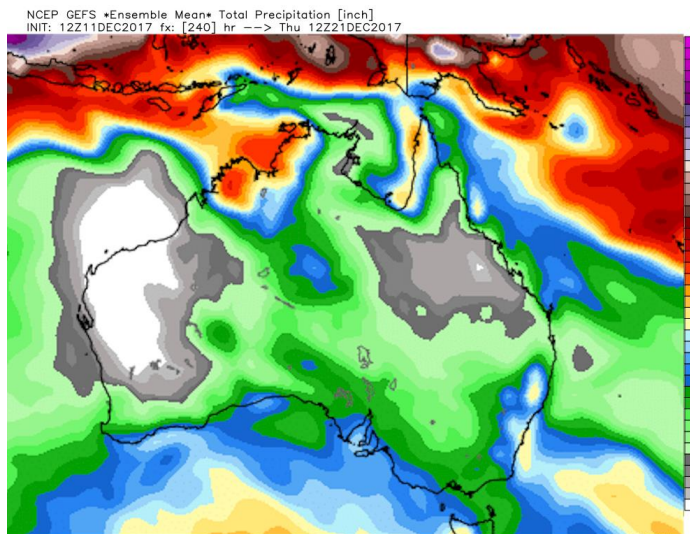
Looking at the rainfall anomalies for the month since December 1 we can see that most of Eastern Victoria and the southeast third of New South Wales has seen anywhere from 25 to 100 mm/ 1-4" above normal rainfall. Even though they have been some pretty good rains in southeastern Queensland those rains actually running a little below normal for early December



AUSTRALIA NEXT 10 DAYS

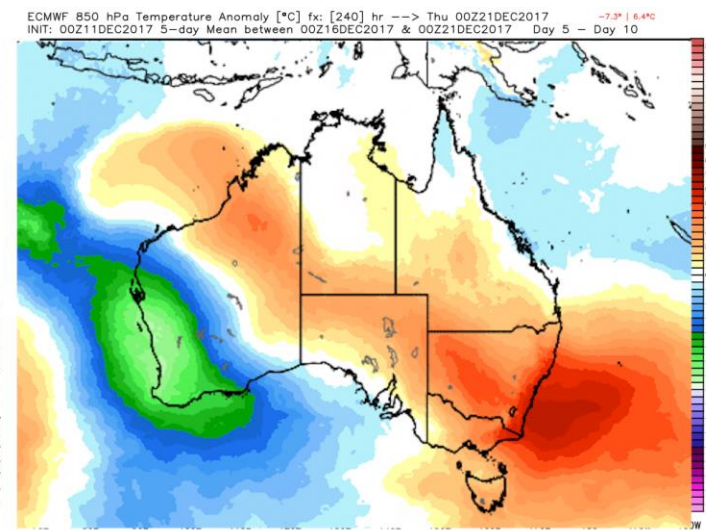
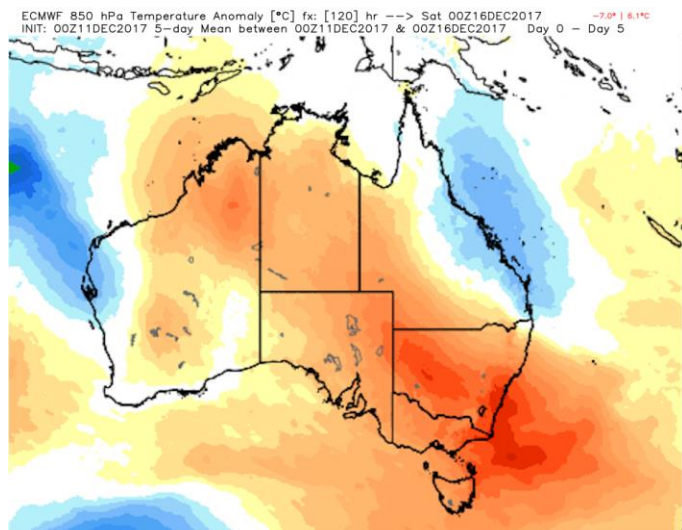
The operational models show most areas are pretty dry for next 5 days. However the midday December 11 operational GFS shows 1 to 2 inch rains over the southeast third of the Southern Australia Territory. This rain does not show up and the European model but the European model has somewhat heavier rains over the eastern third of New South Wales then the GFS.

As you can see from these images however both the European and the GFS ensembles do not show that same sort of significant rain over the southeast third of the Southern Australia Territory.



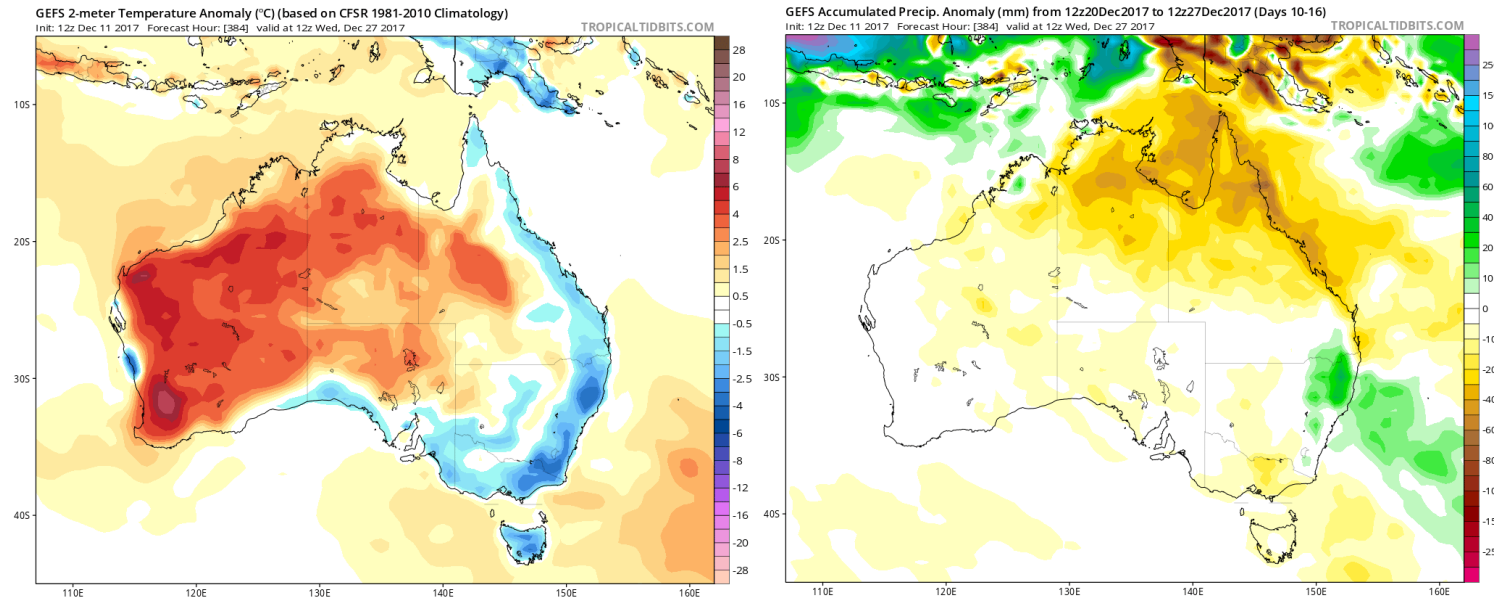
TEMPS NEXT 10 DAYS AUSTRALIA

The heat over southwestern Australia will spread eastward into New South Wales and Victoria of the next 5 days and intensify their the 6-10day while southwest Australia turns cool than normal after day 5..



Week 3 AUSTRALIA

In the 11 to 15 day both the GFS and the European model do show significant rains over the northeast 25% of New South Wales and southeastern 25% of Queensland with amounts up to 2 inches



DT wxrisk.com OFFICE 804 715 8330 CELL 804 307 8070