

**US .. SOUTH AMERICA  
and AUSTRALIA**

**GRAIN WEATHER  
ISSUES**

**as of FRIDAY  
24 NOVEMBER 2017**



LOCATED in Richmond VA

Featured frequently on AGRI-MONEY

**EMAIL WXRISK@VERZION .NET**



@WXRISK.COM



<https://www.facebook.com/WxRisk>

[wxrisk@gmail.com](mailto:wxrisk@gmail.com)

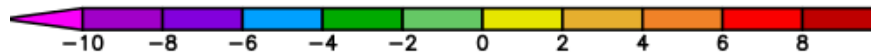
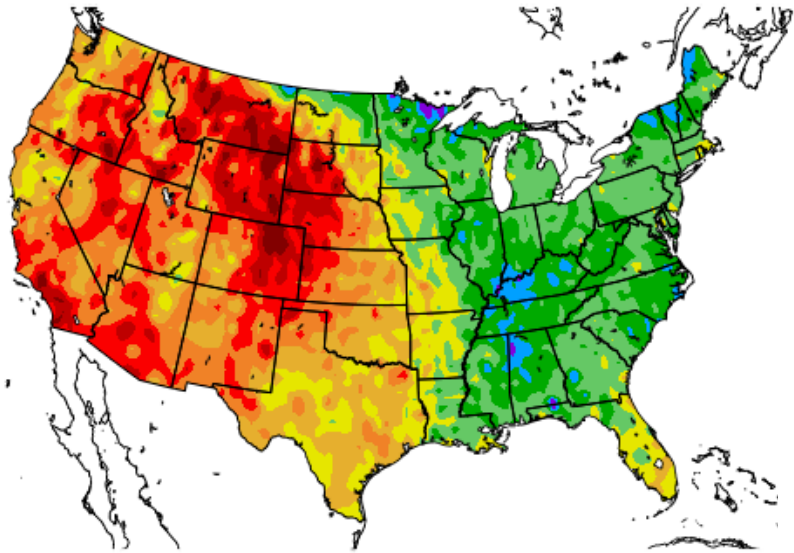


## Who we are

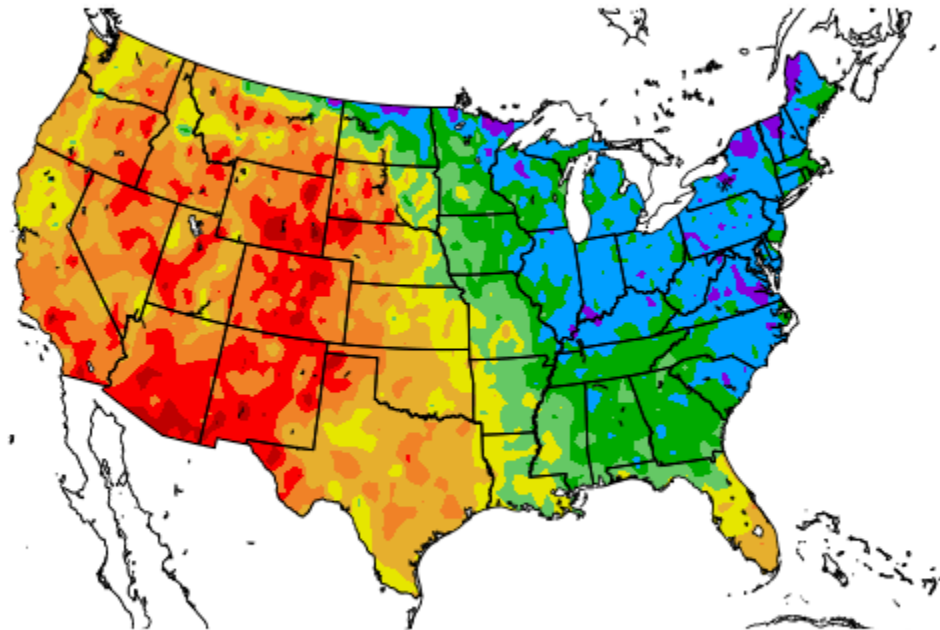
WxRisk is a private, subscription, Weather Forecasting Company. Founded in 1998, the company specializes in providing the most detailed and accurate weather forecasts for Days 3 through 30, as well as seasonal forecasts, for Grain Traders, Farmers, Energy Traders, Construction companies, Oil and Heat associations, Wineries and other businesses impacted by weather. Geographic areas covered include, but are not limited to: The Middle Atlantic region of the U.S., all of the Continental U.S., South America, Europe, Ukraine/Southern and western Russia, Kazakhstan, India, Australia & China. Current and previous clients include large and mid-size commodity trading houses, energy firms, gas and propane companies, ski resorts, individual farmers and business involved in providing transportation and construction services throughout the world.

# US TEMP ANOMALIES LAST 7 and 14 DAYS

Departure from Normal Temperature (F)  
11/17/2017 - 11/23/2017



Departure from Normal Temperature (F)  
11/10/2017 - 11/23/2017

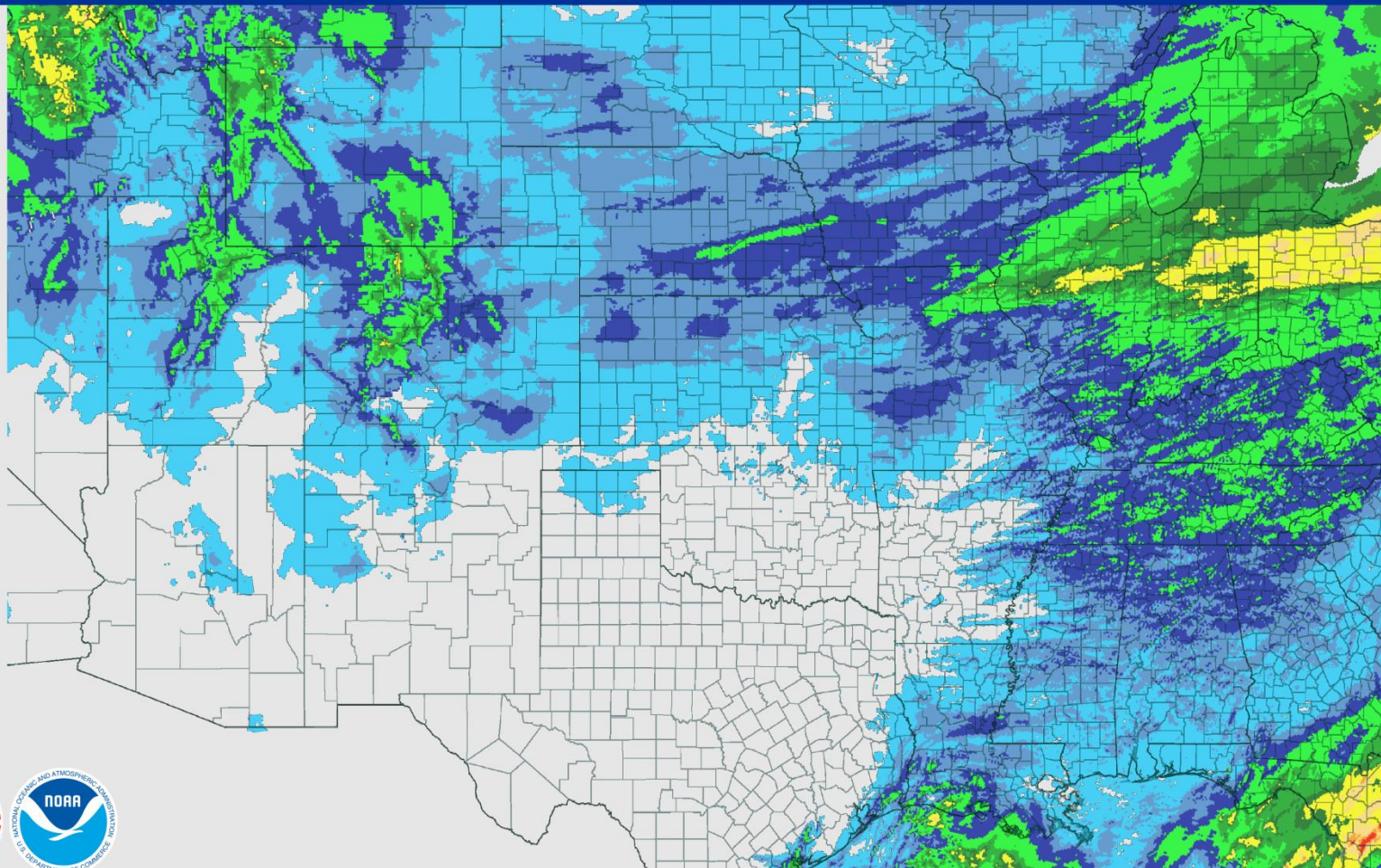


# RAINFALL PAST 7 DAYS—

November 24, 2017 7-Day Observed Precipitation

Created on: November 24, 2017 - 17:53 UTC

Valid on: November 24, 2017 12:00 UTC



Inches

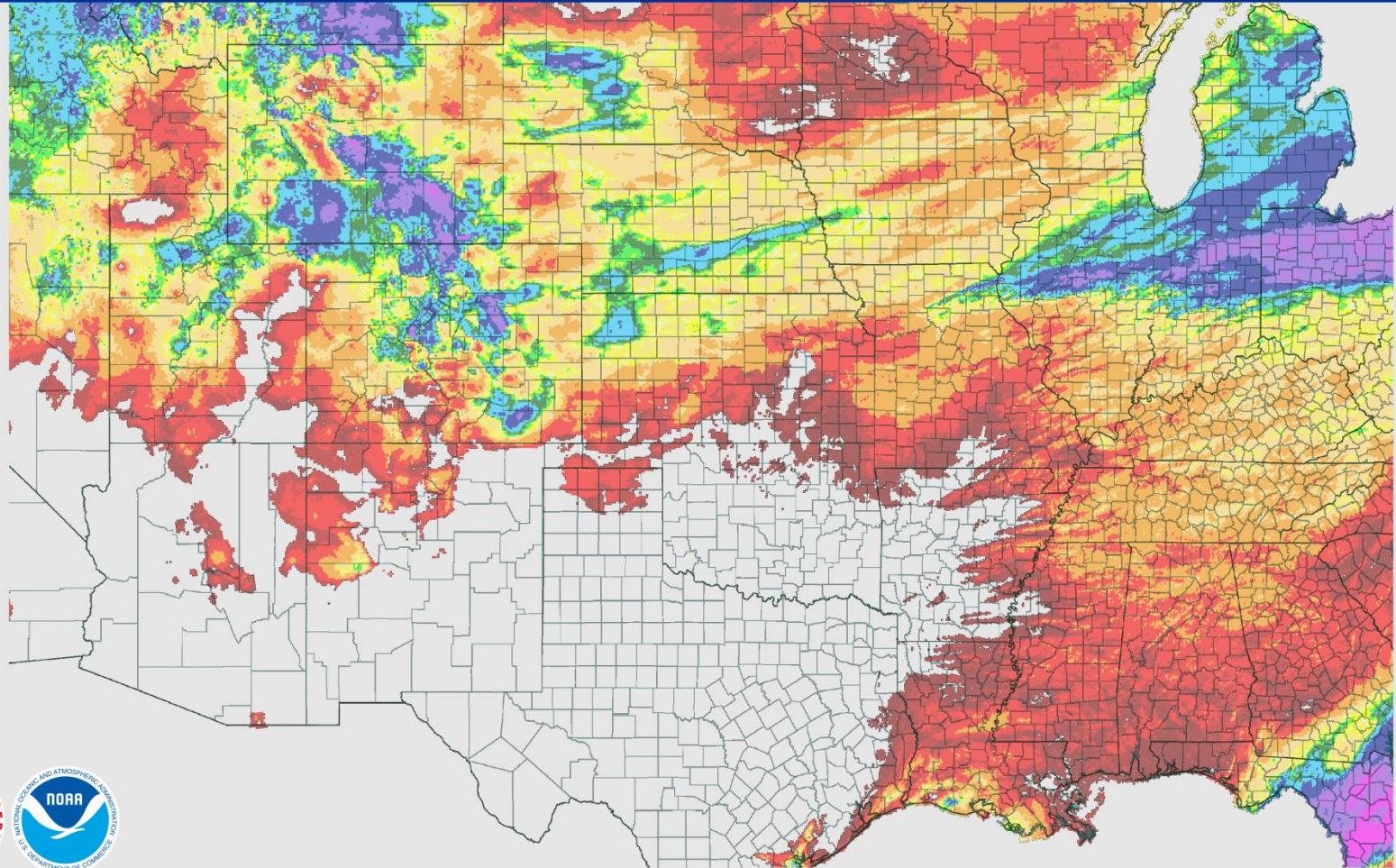


# PRECIP ANOMALIES PAST 7D

November 24, 2017 7-Day Percent Precipitation

Created on: November 24, 2017 - 17:55 UTC

Valid on: November 24, 2017 12:00 UTC

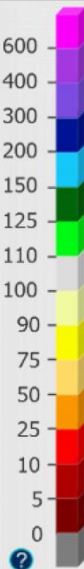
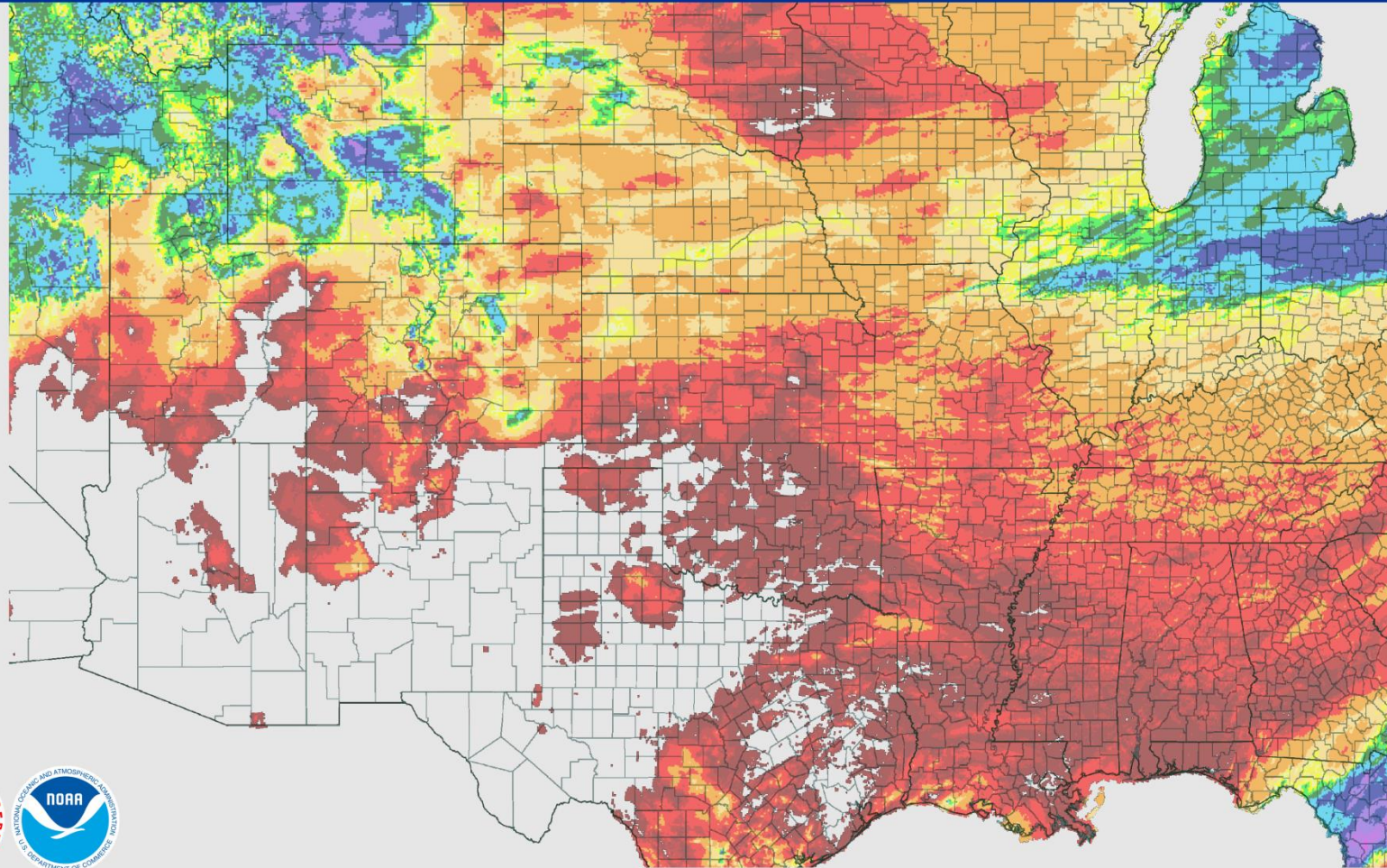


# PRECIP ANOMALIES PAST 14 DAYS

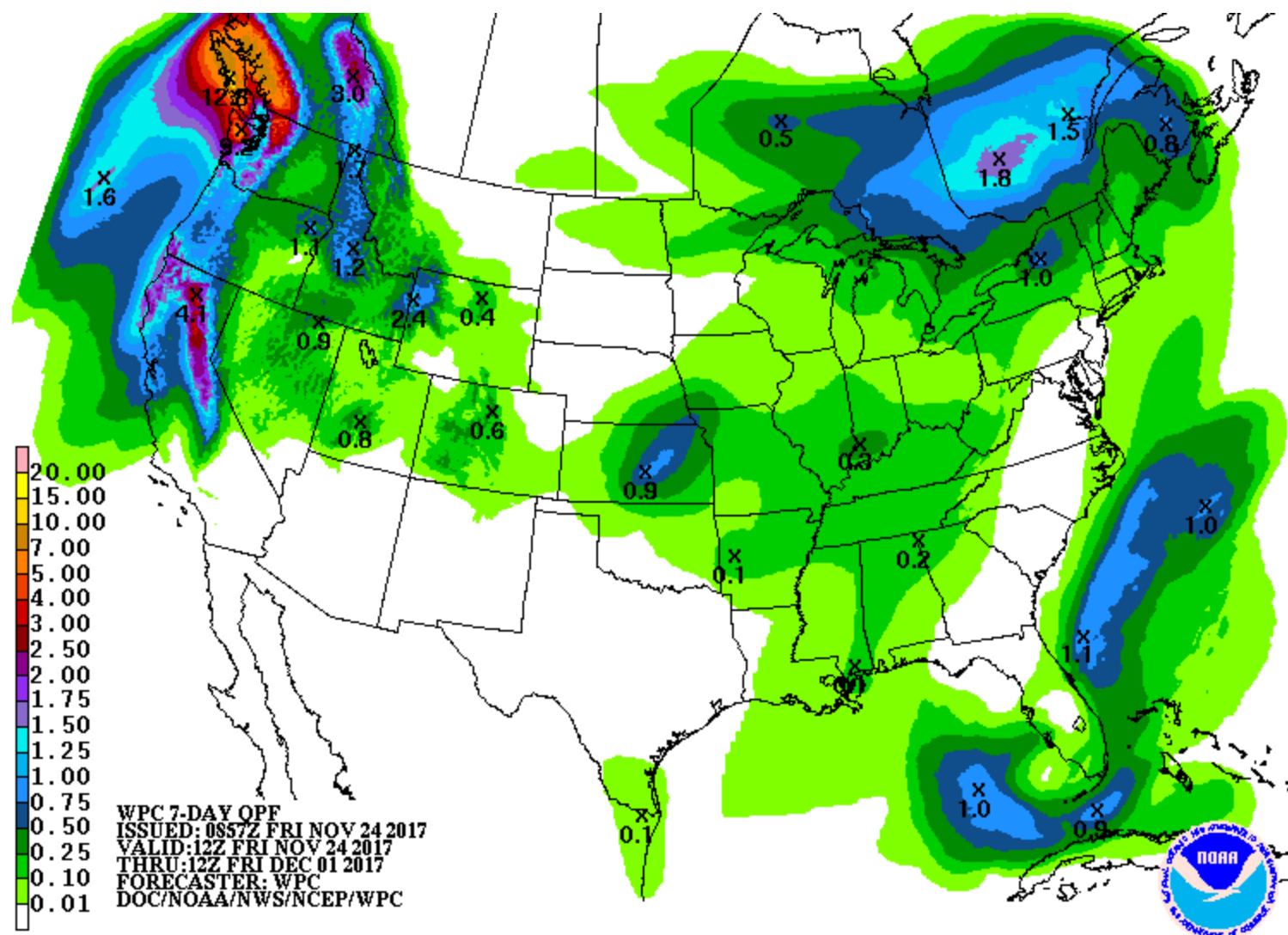
November 24, 2017 14-Day Percent Precipitation

Created on: November 24, 2017 - 18:14 UTC

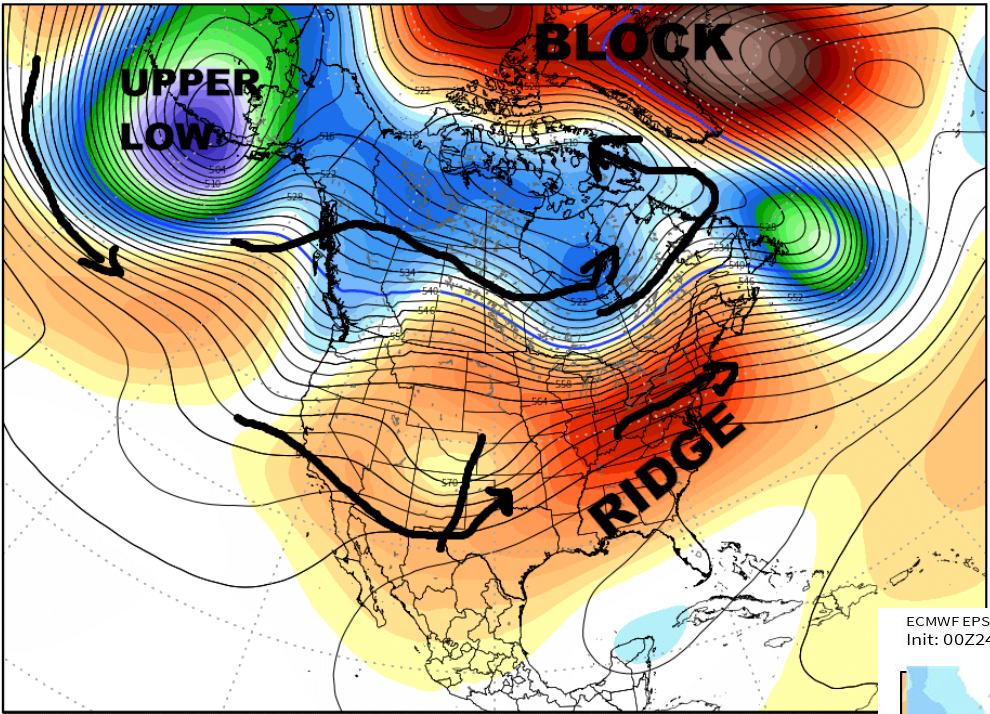
Valid on: November 24, 2017 12:00 UTC



# NWS OFFICIAL RAINFALL NEXT 7 DAYS



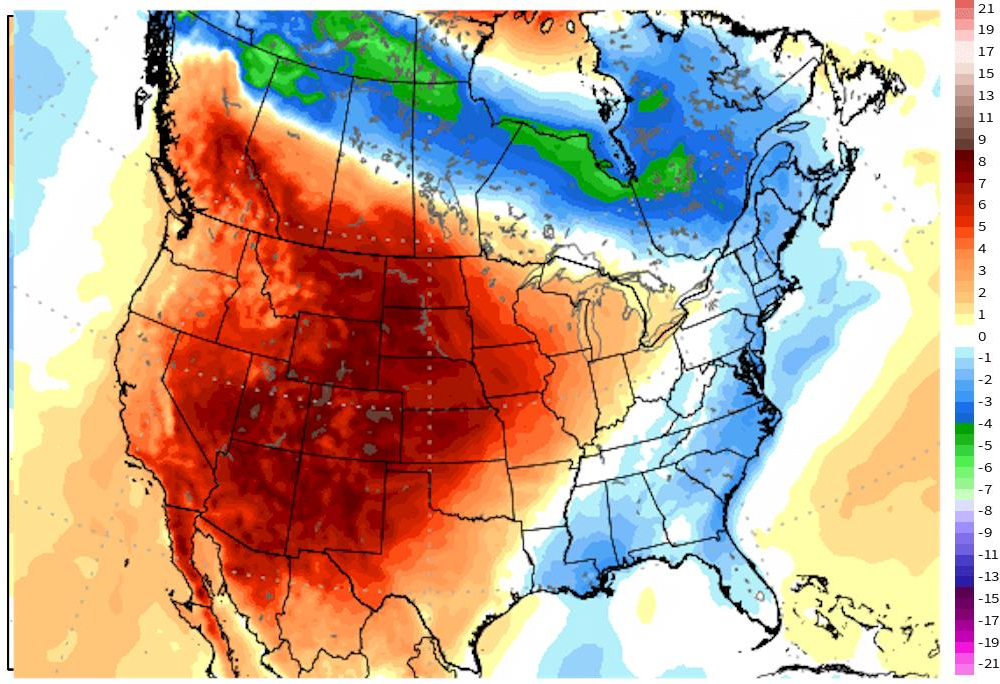




# LAST WEEK OF NOV -- big ridge over western US spreads east into Midwest/ eastern US so pattern turns milder but dry

ECMWF EPS 2-meter Temperature Anomaly [°C] | 5-day Ensemble Mean --> 00Z24NOV2017 & 00Z29NOV2017 Day 0 - Day 5  
Init: 00Z24NOV2017 -- [120] hr --> Valid Wed 00Z29NOV2017  
MIN|MAX -11.7° | 17.1°C

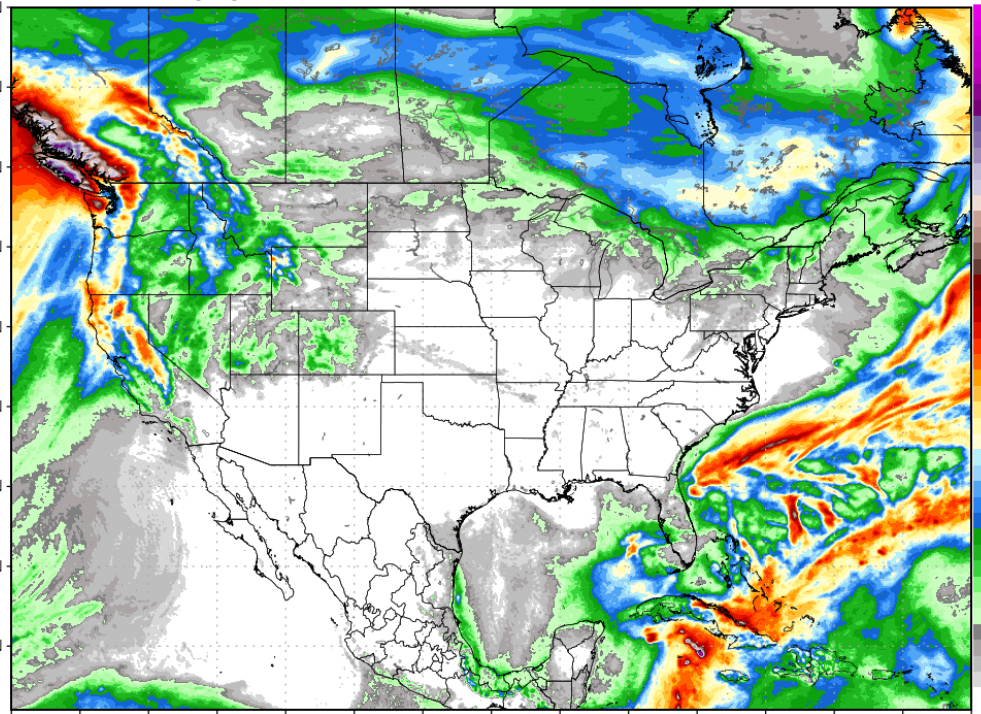
This service is based on data and products of the European Centre for Medium-range Weather Forecasts (ECMWF) [weather](#)



ECMWF Total Precipitation [inch]  
Init: 00Z24NOV2017 -- [120] hr --> Valid Wed 00Z29NOV2017

MAX: 14.8 inch

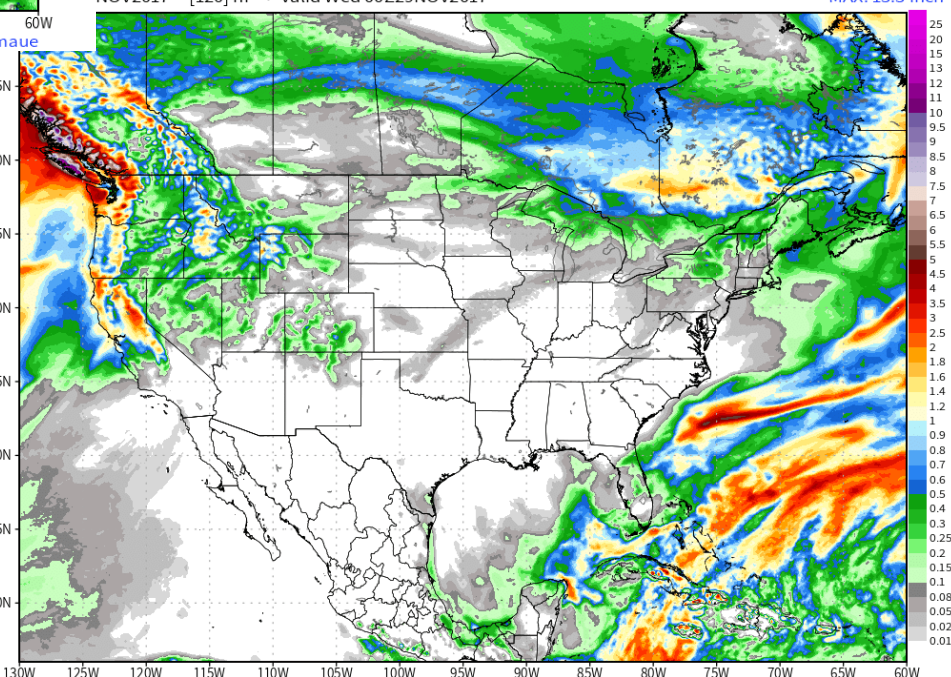
# EURO RAINFALL NEXT 5 DAYS



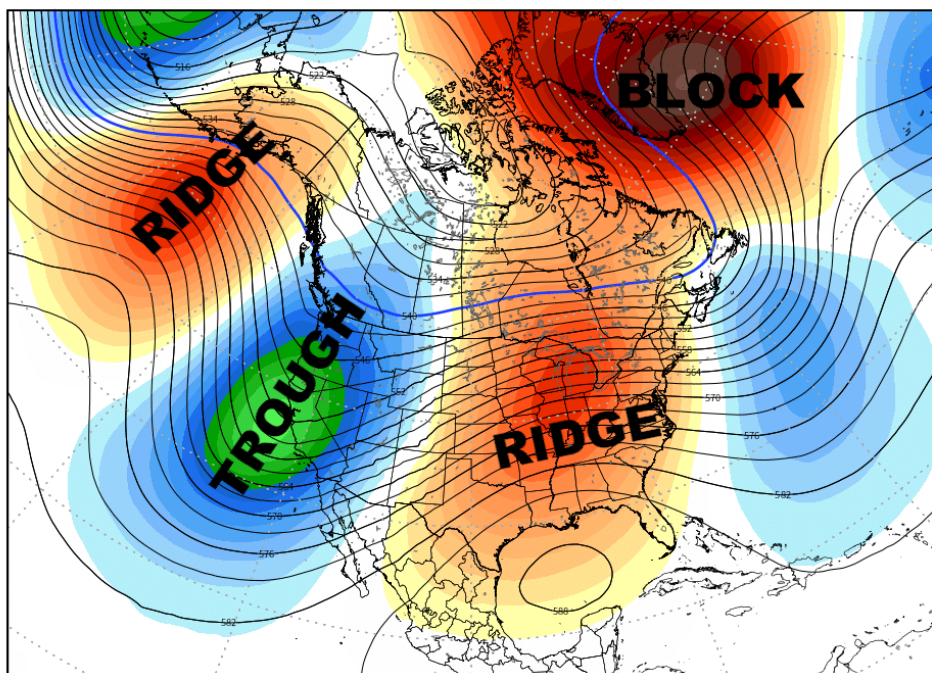
This service is based on data and products of the European Centre for Medium-range Weather Forecasts (ECMWF)

[@ryanmaue](https://weather.us)

# RAINFALL ANOMALIES NEXT 5 DAYS



[@ryanmaue](https://weather.us)

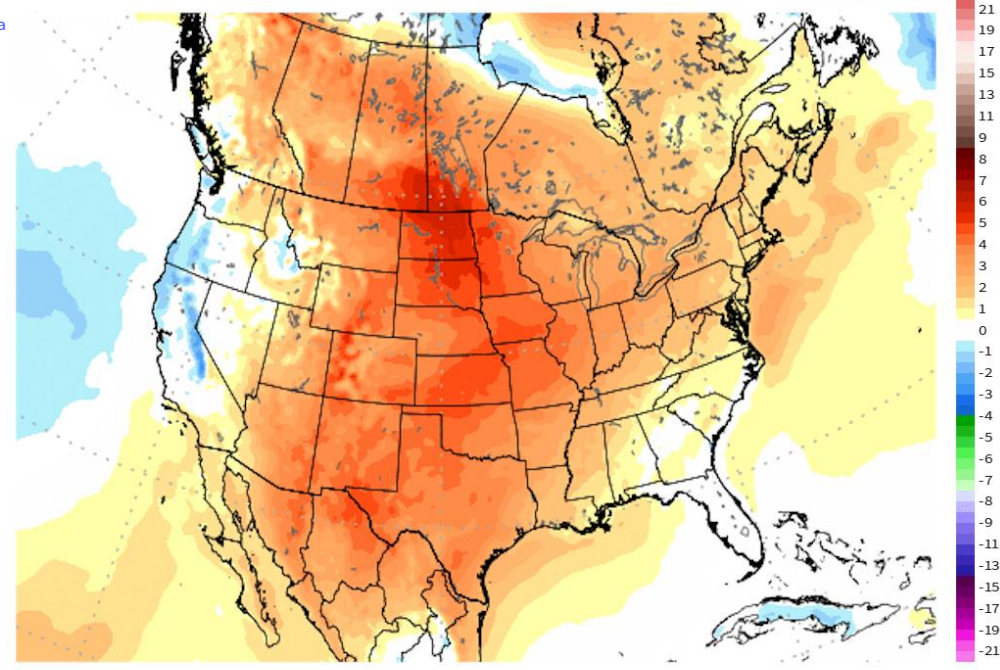


**6-10 D – into 1<sup>st</sup> week of DEC shows DEEP trough over West coast = big ridge over se US= warm & dry central/ eastern US**

ECMWF EPS 2-meter Temperature Anomaly [°C] | 5-day Ensemble Mean --> 00Z29NOV2017 & 00Z04DEC2017 Day 5 - Day 10  
 Init: 00Z24NOV2017 -- [240] hr --> Valid Mon 00Z04DEC2017  
 MIN|MAX -10.3° | 13.6°C

This service is based on data and products of the European Centre for Medium-range Weather Forecasts (ECMWF)

[@rya](http://weather.us)



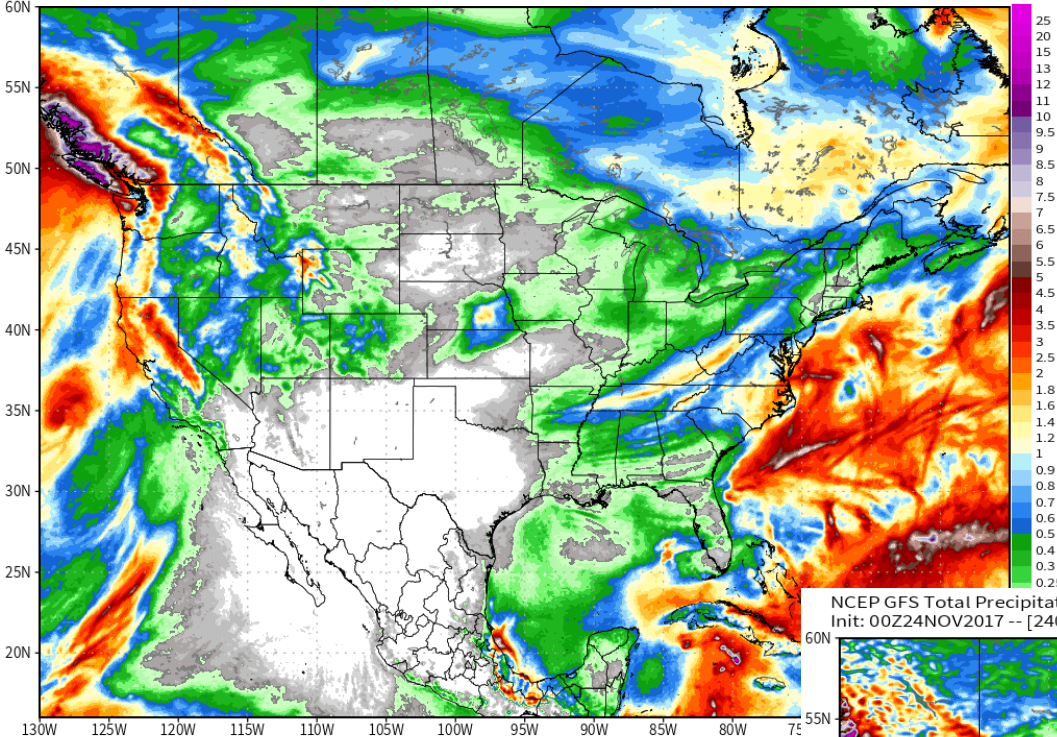
This service is based on data and products of the European Centre for Medium-range Weather Forecasts (ECMWF)

[@ryanmaue](http://weather.us)

ECMWF Total Precipitation [inch]  
Init: 00Z24NOV2017 -- [240] hr --> Valid Mon 00Z04DEC2017

MAX: 15.4 inch

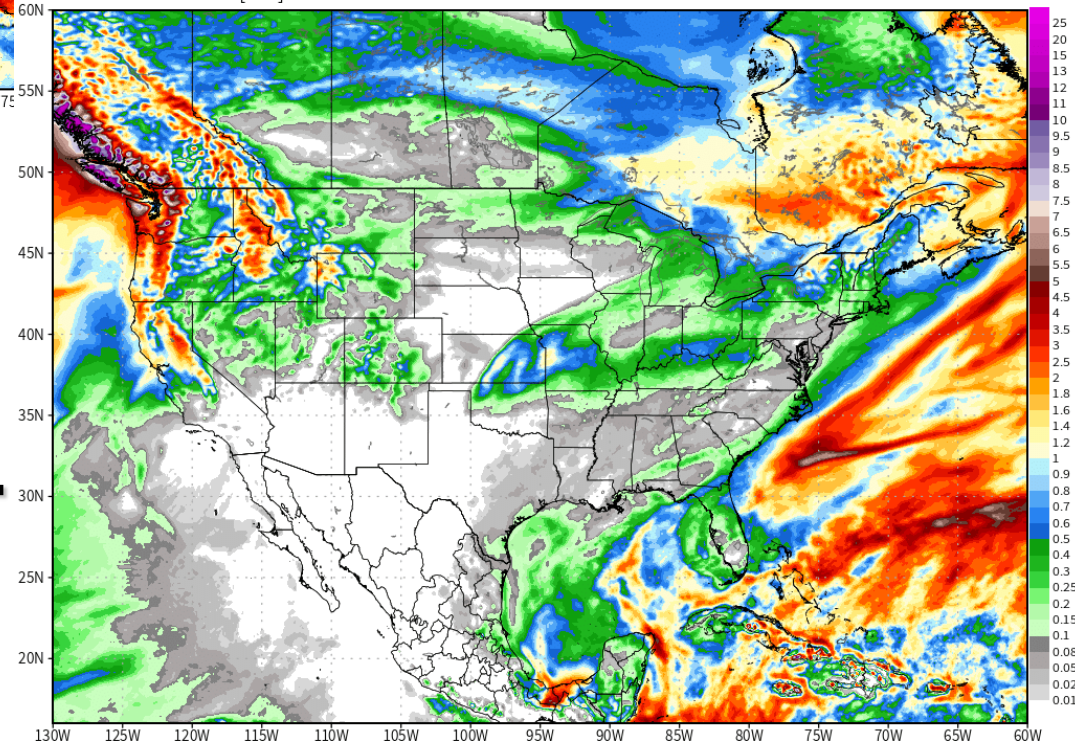
# EURO RAINFALL 6-10DAY

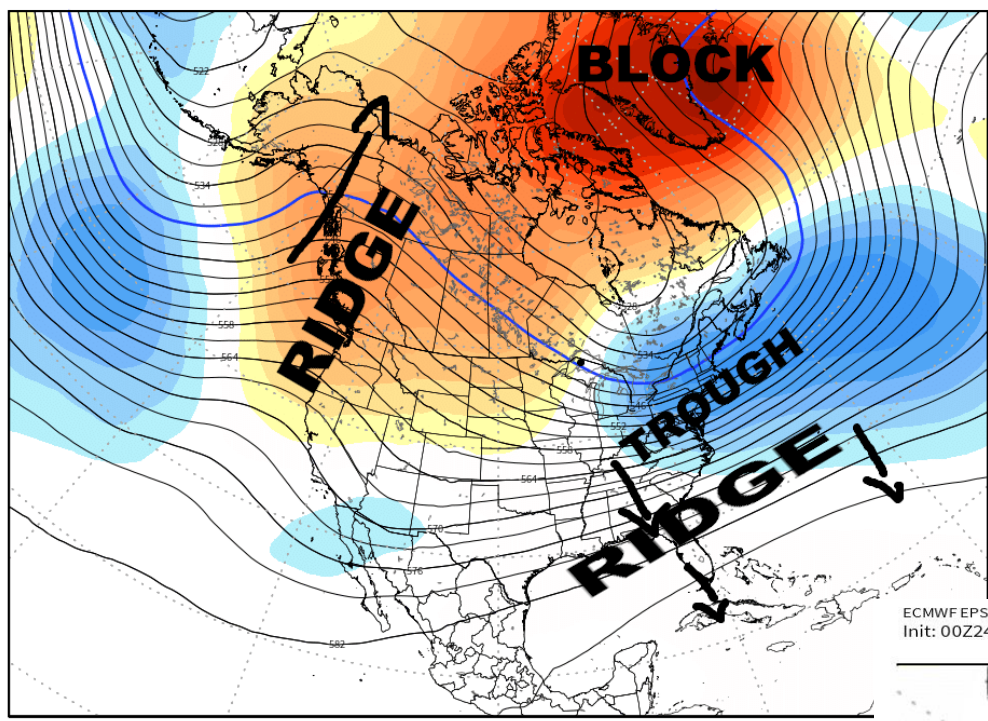


NCEP GFS Total Precipitation [inch]  
Init: 00Z24NOV2017 -- [240] hr --> Valid Mon 00Z04DEC2017

MAX: 16.3 inch

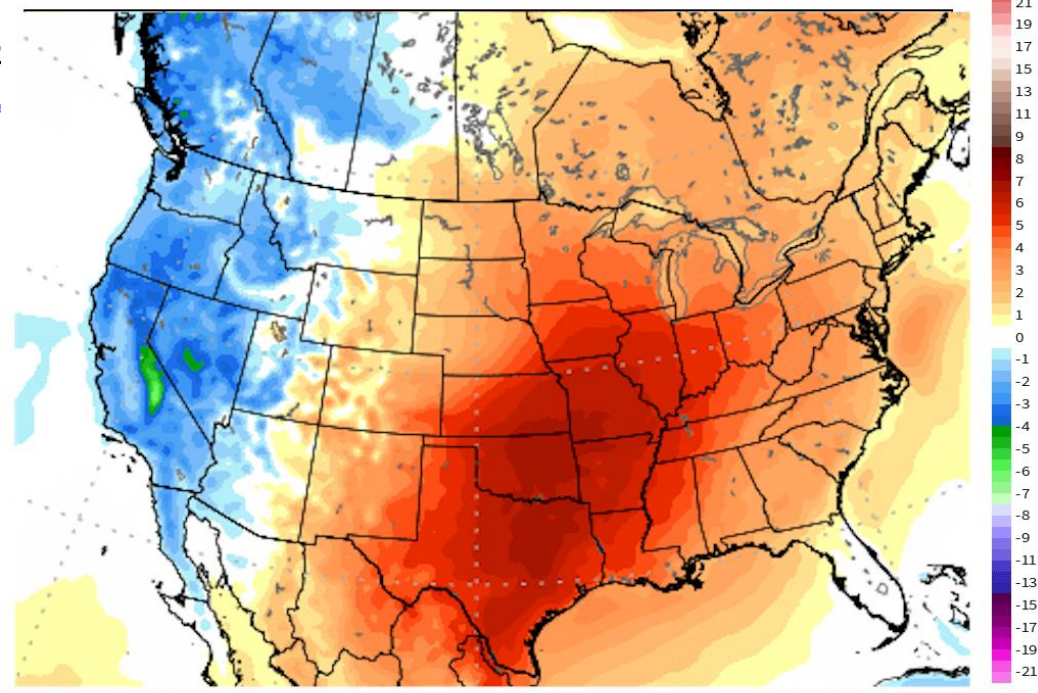
# GFS RAINFALL 6-10D





**11-15D – MAJOR  
PATTERN CHANGE  
BEGINS -- ridge  
replaces trough on  
West... Trough moves  
into NE US suppresses  
se US ridge**

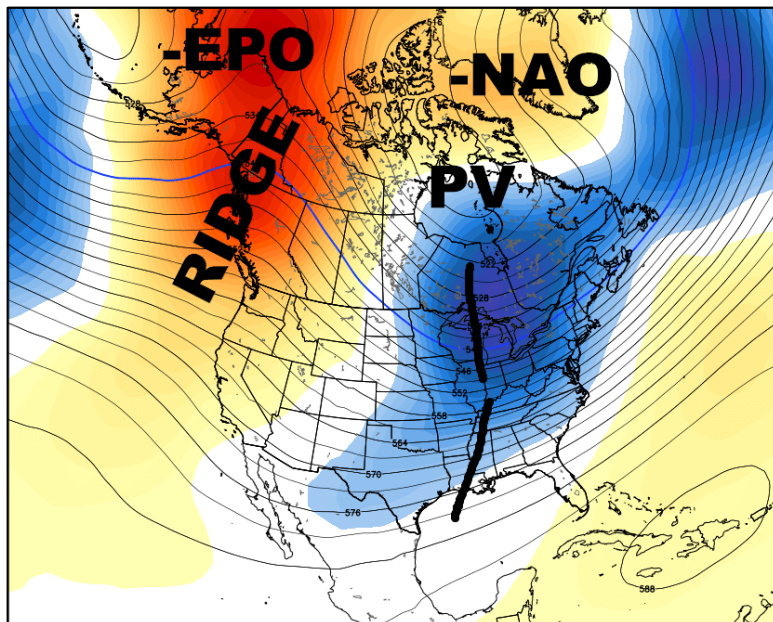
ECMWF EPS 2-meter Temperature Anomaly [°C] | 5-day Ensemble Mean --> 12Z03DEC2017 & 12Z08DEC2017 Day 9.5 - Day 14.5  
Init: 00Z24NOV2017 -- [348] hr --> Valid Fri 12Z08DEC2017  
MIN|MAX -7.3° | 13.2°C



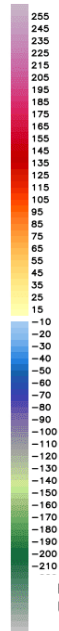
**11-15D – TEMPS warm  
over the 5 days but  
new pattern doesn't kick  
in until day 14-15**

# -AO DEC 13-14

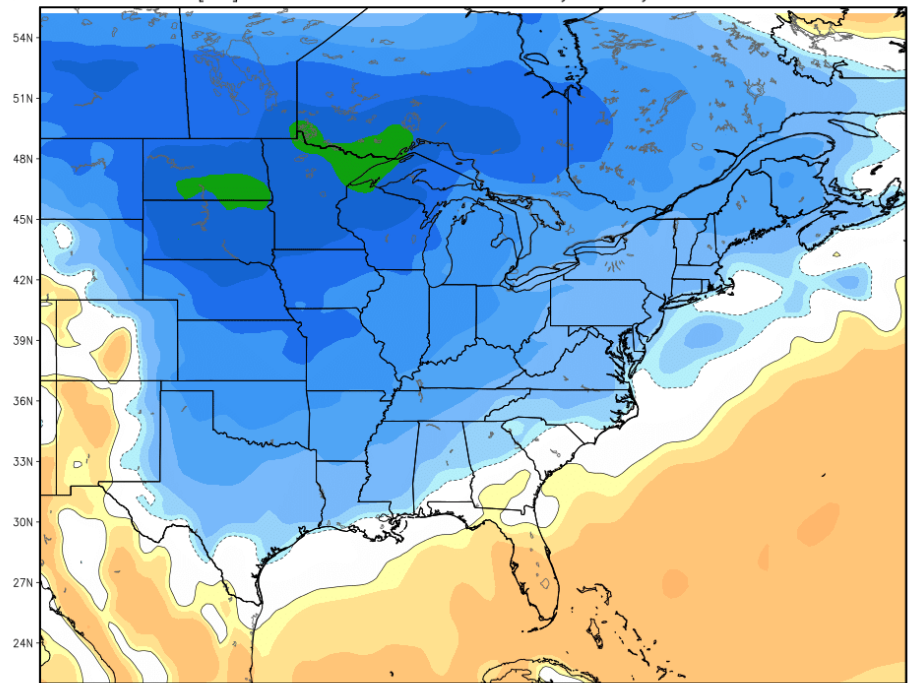
ECMWF EPS Monthly Ensemble Mean 500 hPa Geopotential Height [dm] & Anomaly [m]  
INIT: 00Z23NOV2017 fx: [504] hr --> Thu 00Z14DEC2017 Min|Max: -78.6 | 141.3 m



## 16-20D – MAJOR PATTERN IN PLACE BEGINS -- colder and stormy especially east of the Mississippi river

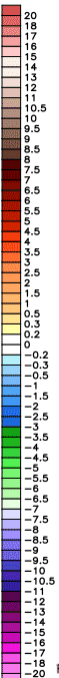
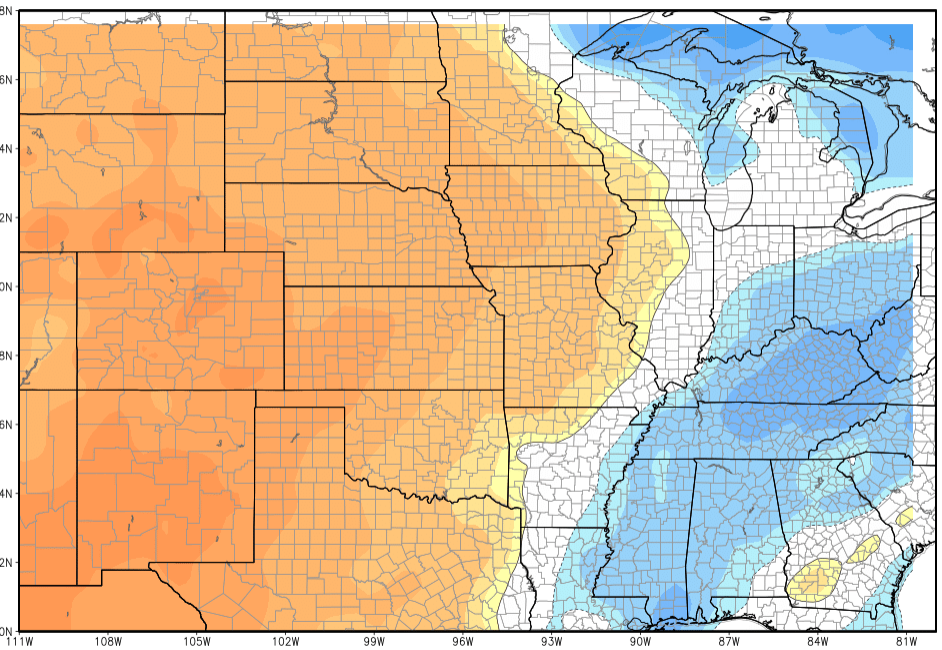


ECMWF EPS Ensemble Mean 7-day Avg 2m Temperature Anomaly [°C]  
Init: 00Z23NOV2017 -- [600] hr --> Valid on Mon 00Z18DEC2017 Day 18 - Day 25 Min|Max: -3.6° | 1.4°C



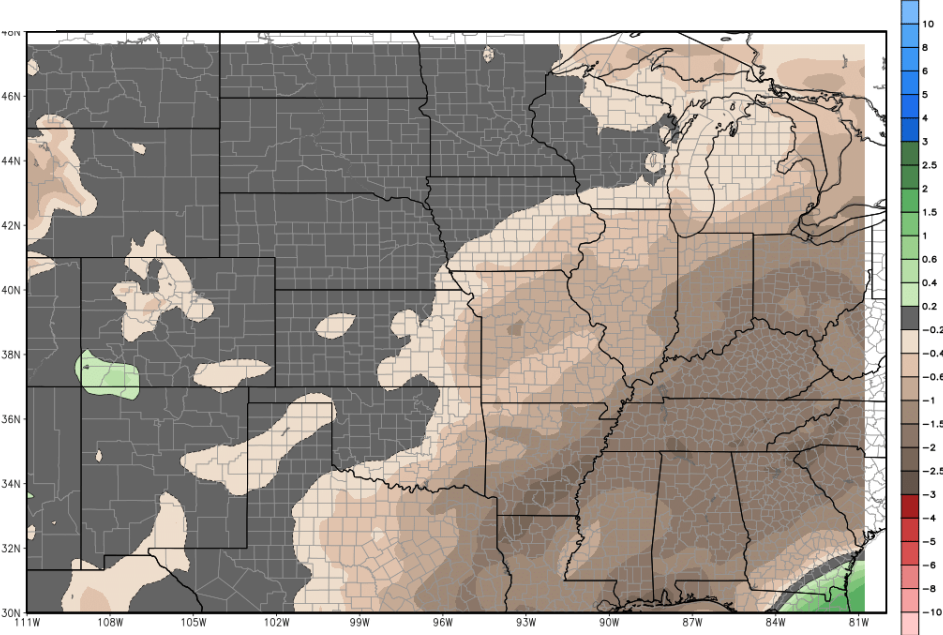
Average between 00Z11DEC2017-00Z18DEC2017 | ECMWF EPS 1997-2016 Hindcast Climatology

**TEMP ANOMALIES next 32 days to Mid DEC . Yes it may turn cold after DEC 10-15 but until then it is mild**



Average between 00Z23NOV2017-00Z25DEC2017 | ECMWF EPS 1996-2015 Hindcast Climatology

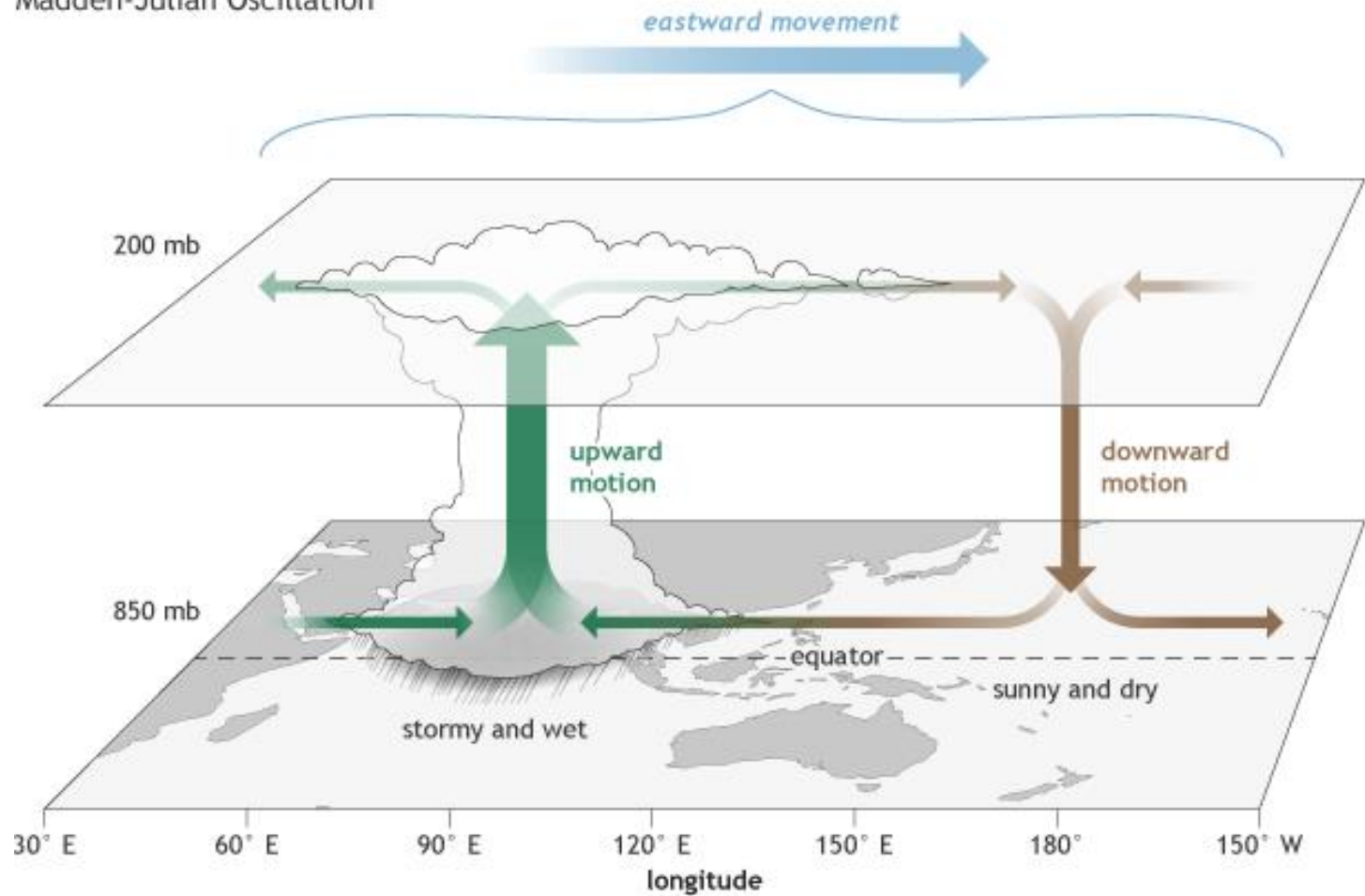
**RAINFL ANOMALIES next 32 days to Mid DEC . DRY over Delta into ECB deep south**



Accumulation between 00Z23NOV2017-00Z25DEC2017 | ECMWF EPS 1996-2015 Hindcast Climatology

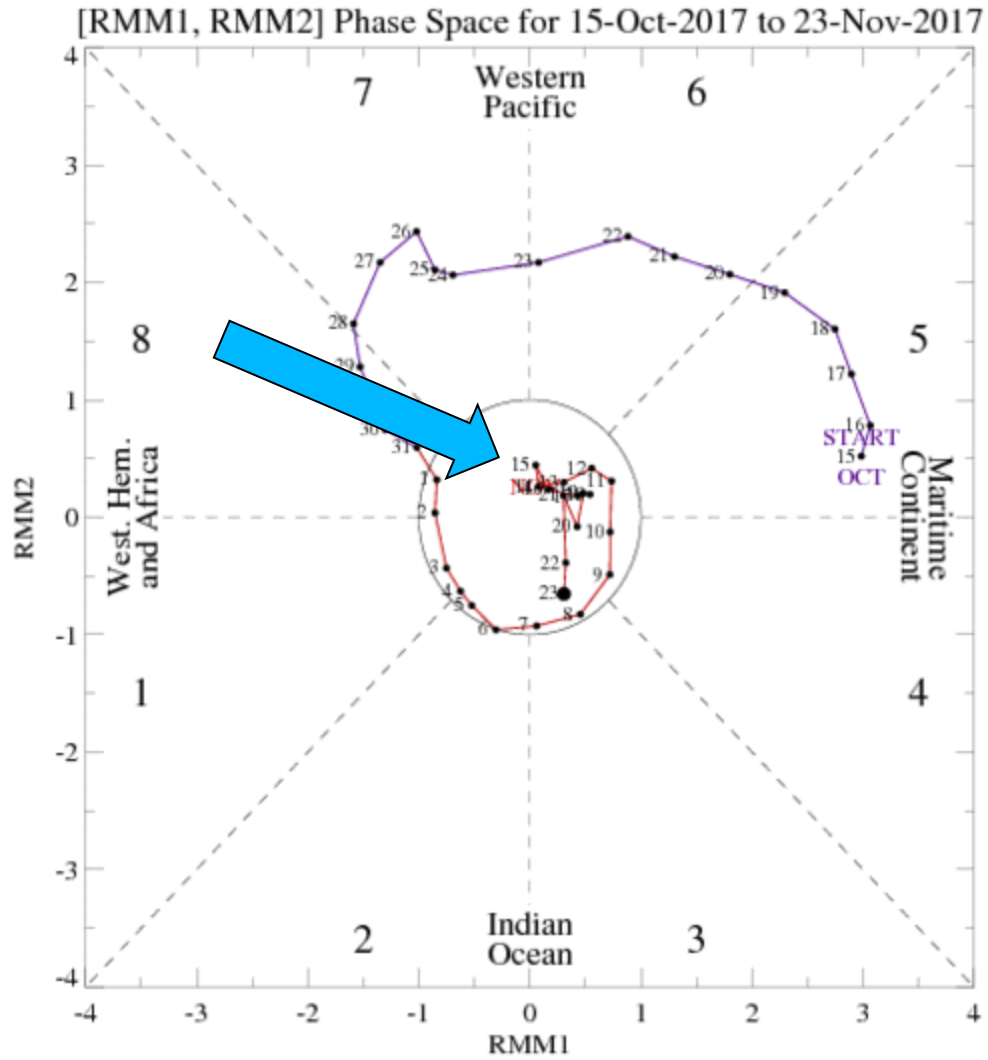
# LETS TALK MJO/ENSO

Madden-Julian Oscillation

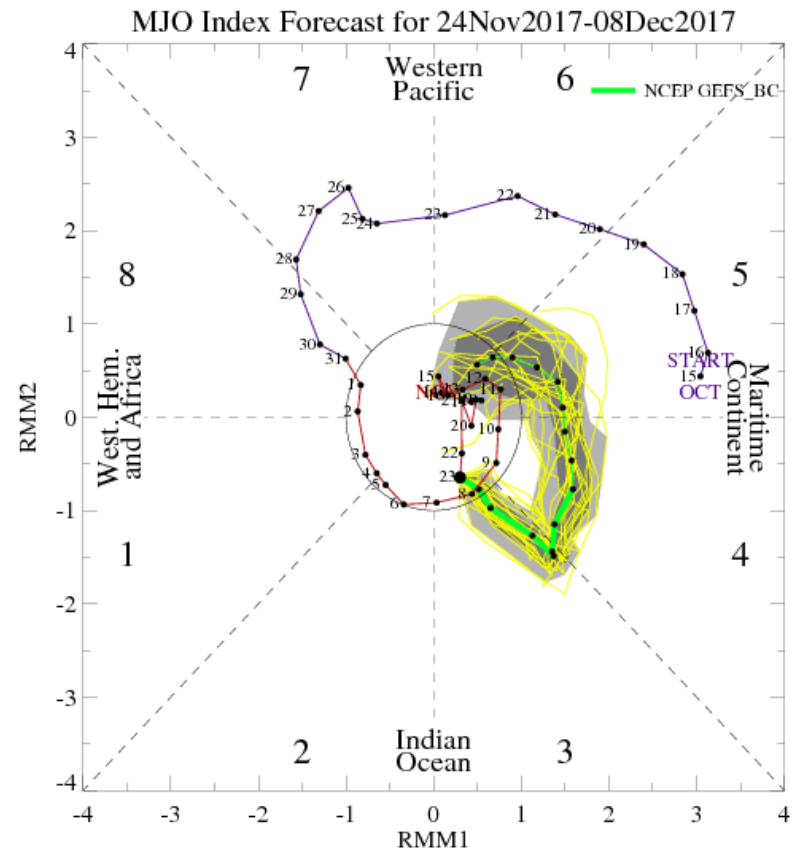
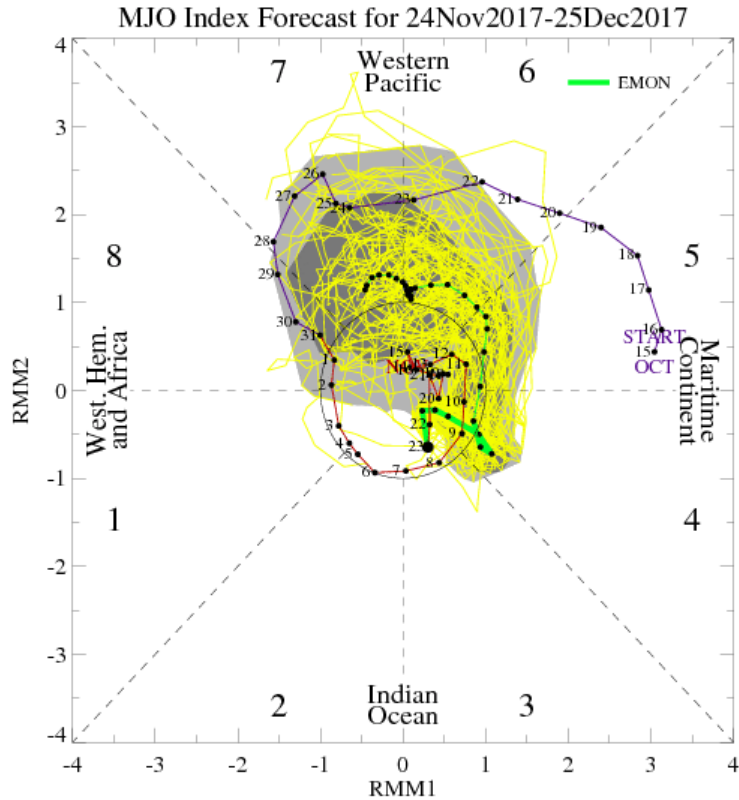




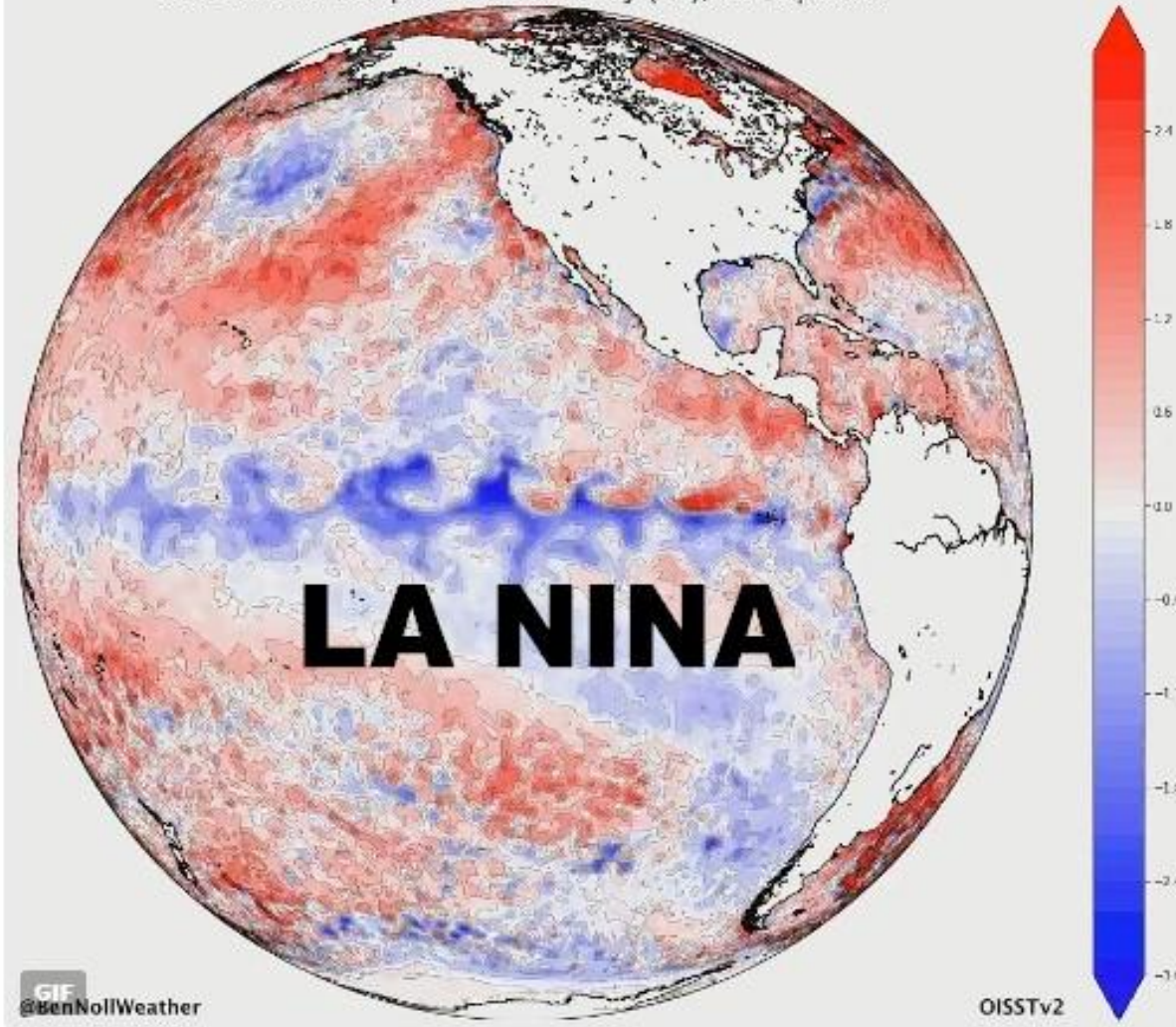
# MJO IS DEAD



# MJO WAKES UP...INTO PHASE 3... 4 and 5 through DEC 8 possible into phase 7-8 by DEC 25



Sea Surface Temperature Anomaly (°C), 10 Sep 2017



6:29 AM - 13 Sep 2017

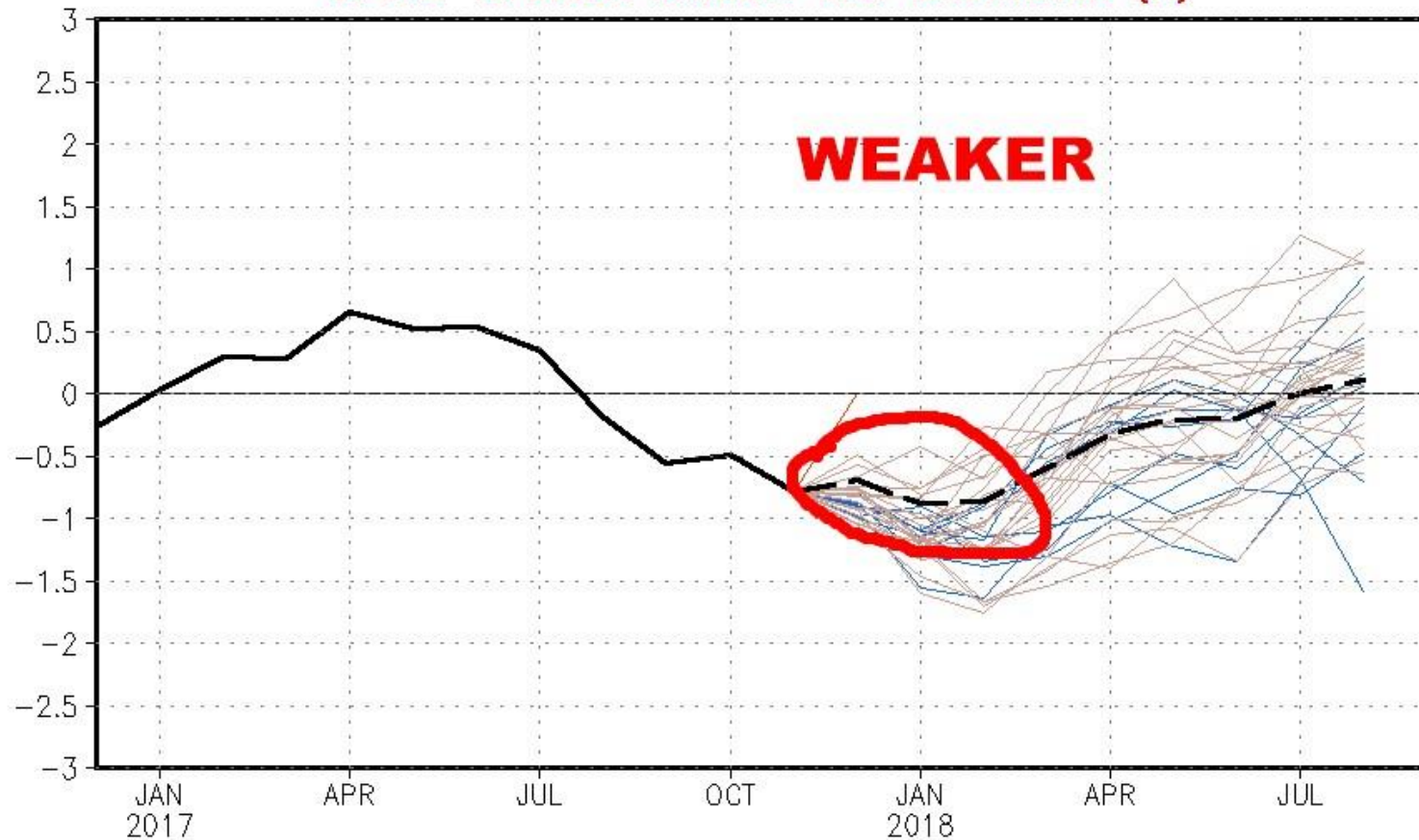
# LATEST CFS MODEL PROJECTION = \*\* La Nina is WEAKER .. Does NOT reach MODERATE by JAN ...then weakens to Neutral by MARCH.



NWS/NCEP/CPC

Last update: Fri Nov 24 2017  
Initial conditions: 25Oct2017-3Nov2017

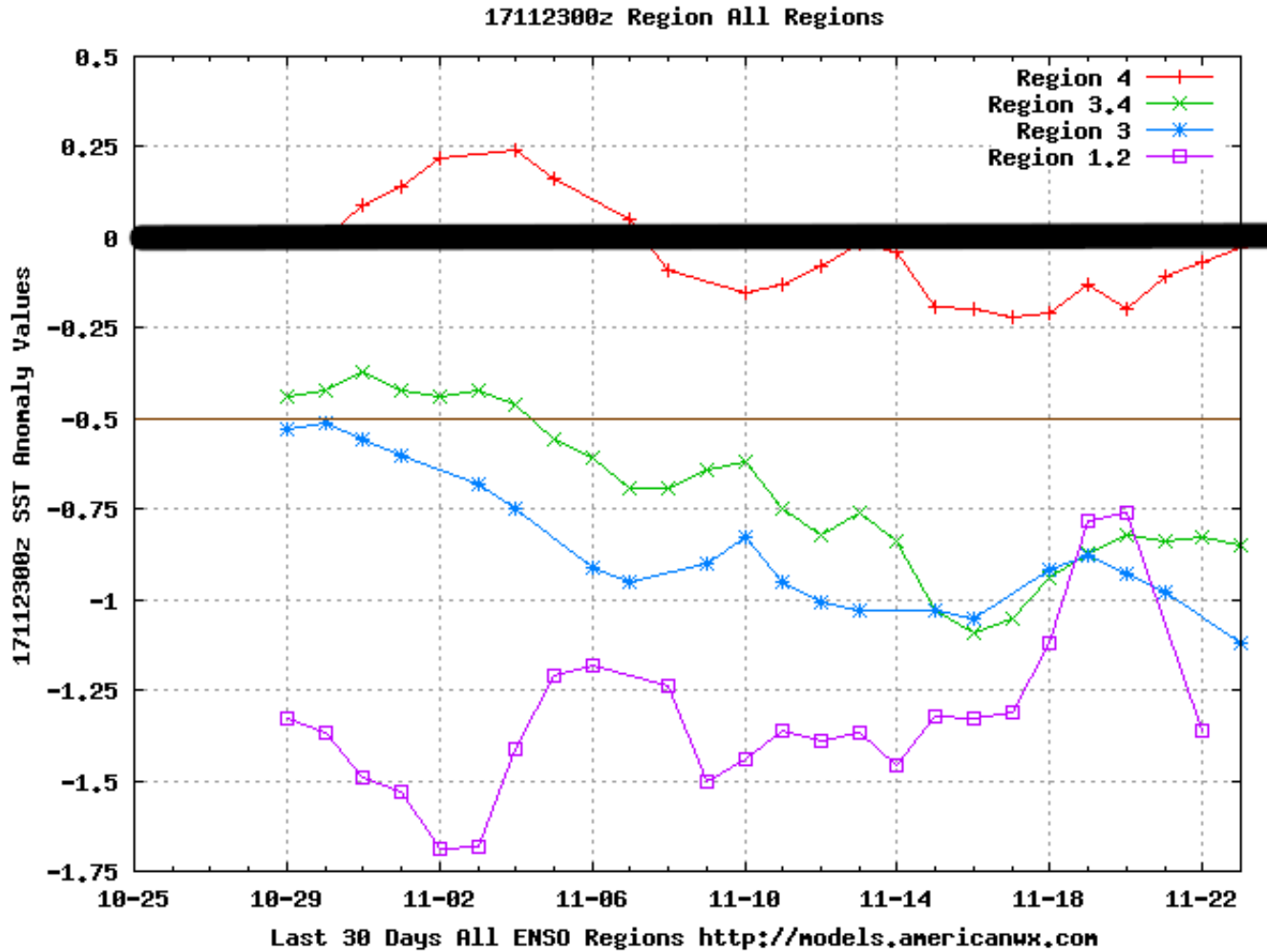
CFSv2 forecast Nino3.4 SST anomalies (K)



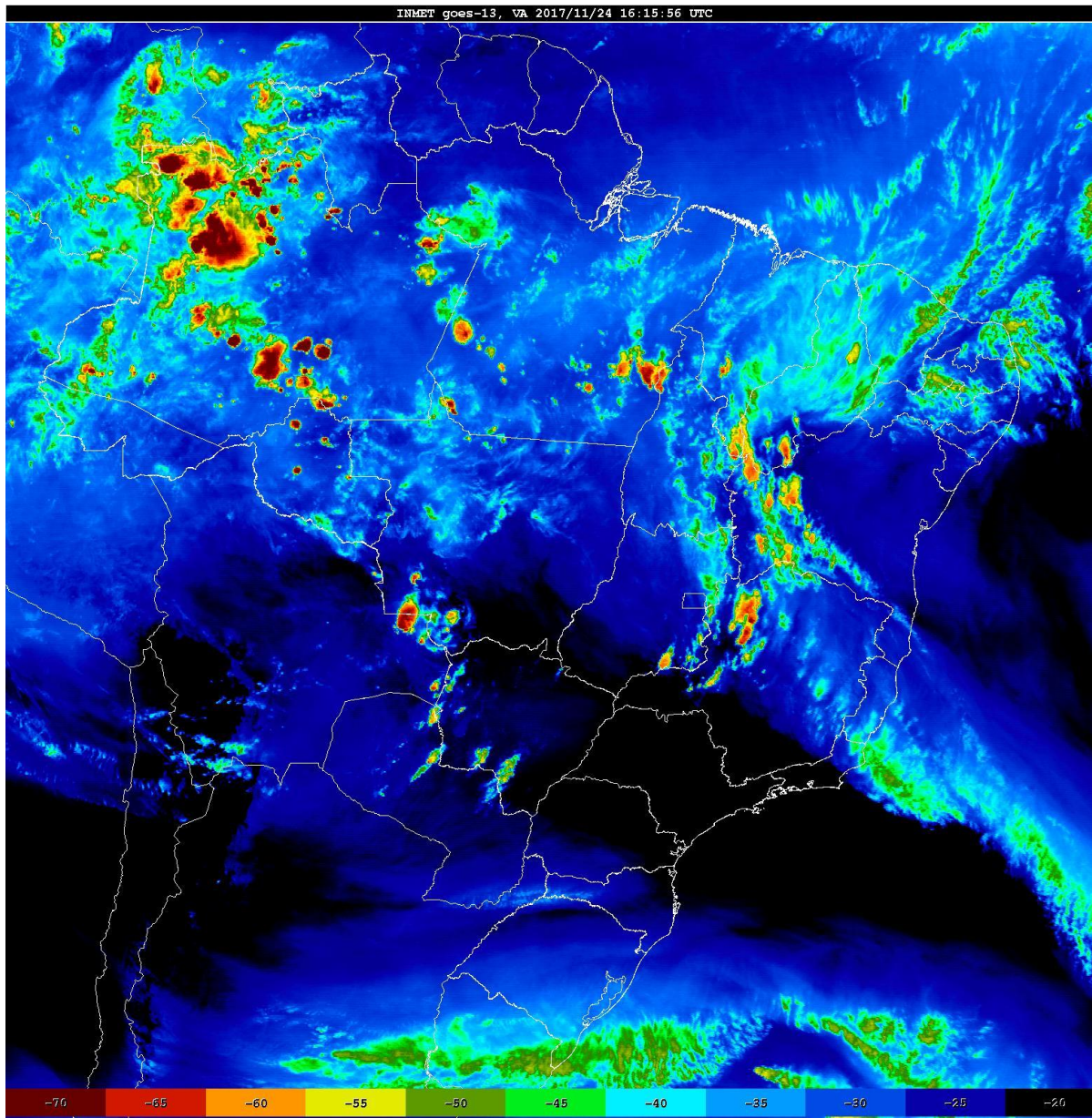
— Latest 8 forecast members  
— Earliest 8 forecast members  
— Other forecast members

--- Forecast ensemble mean  
— NCDC daily analysis

# ACTUAL SEA SURFACE TEMP ANOMALIES – not projection .. Large area of cold water surface and sub surface -- weak LA NINA is here



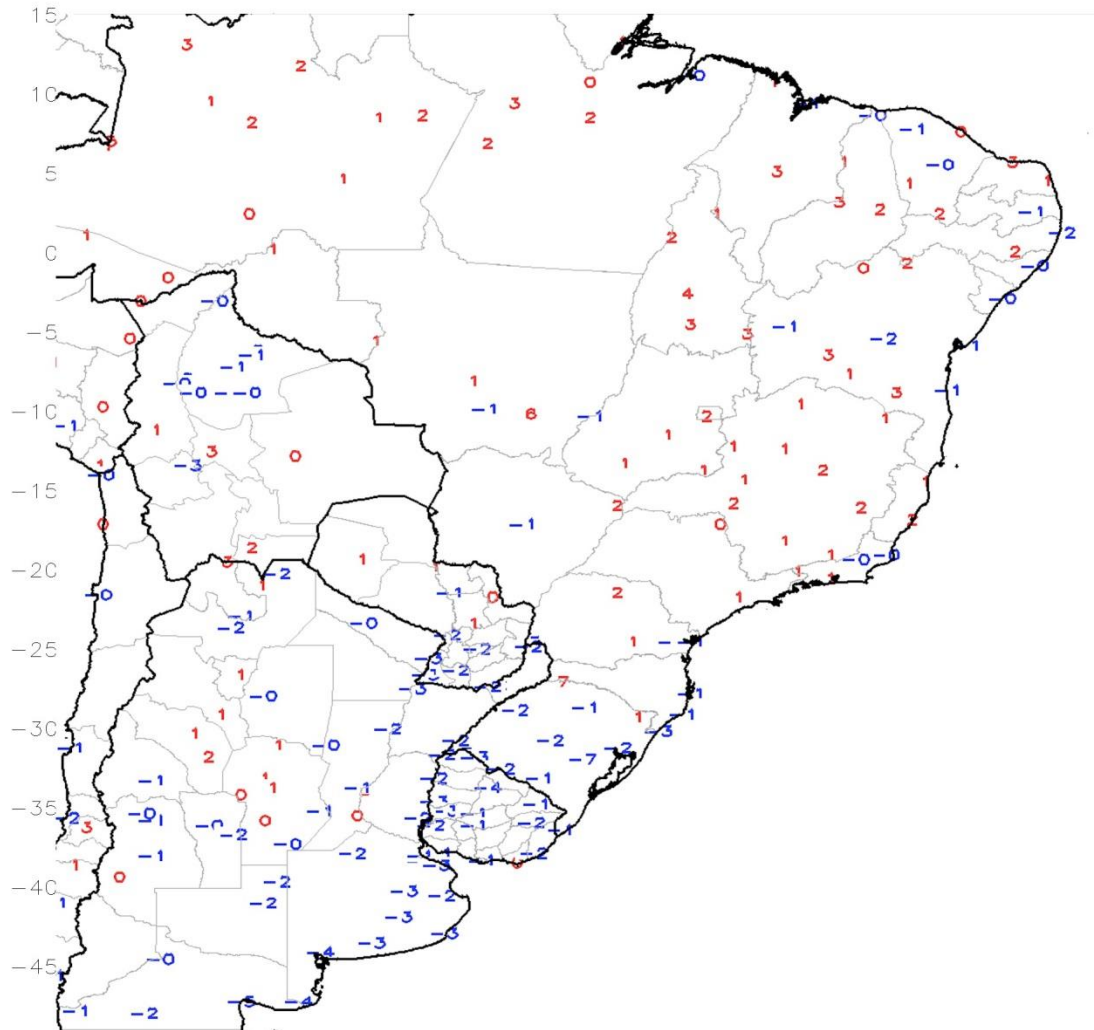
# Low and middle clouds over most of Brazil but not big storm clusters or rain



# TEMP ANOMALIES LAST 7 DAYS

GTS Station Running 7-Day Average Temperature Anomaly (C)

Period: 17Nov2017 – 23Nov2017



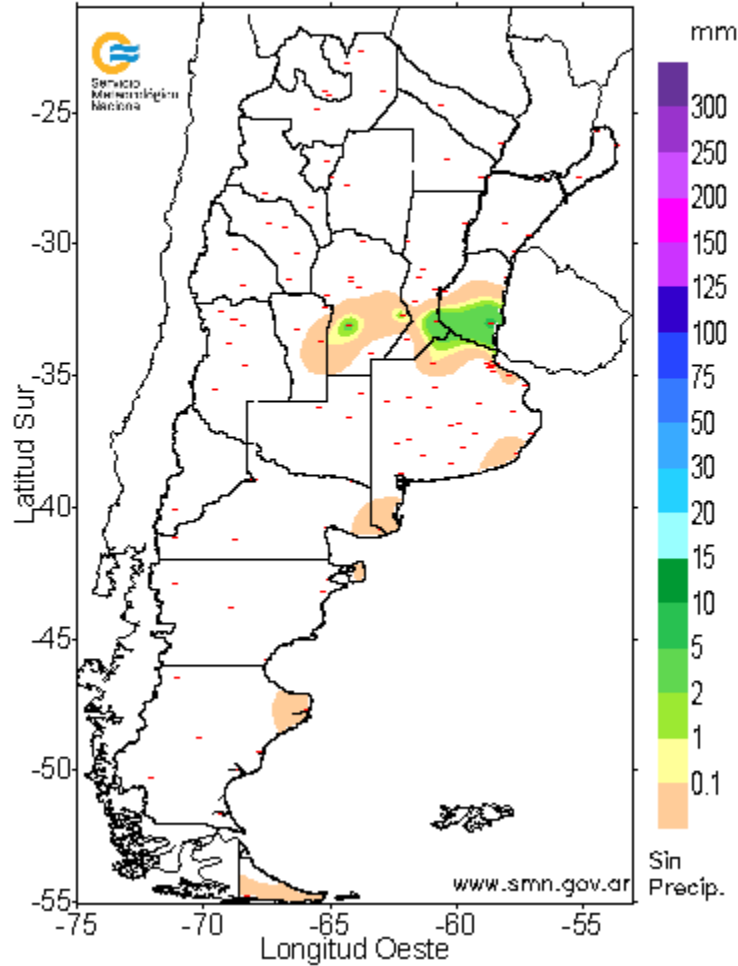
# RAINFALL NOV 23

# RAINFALL NOV 22

Servicio Meteorológico Nacional

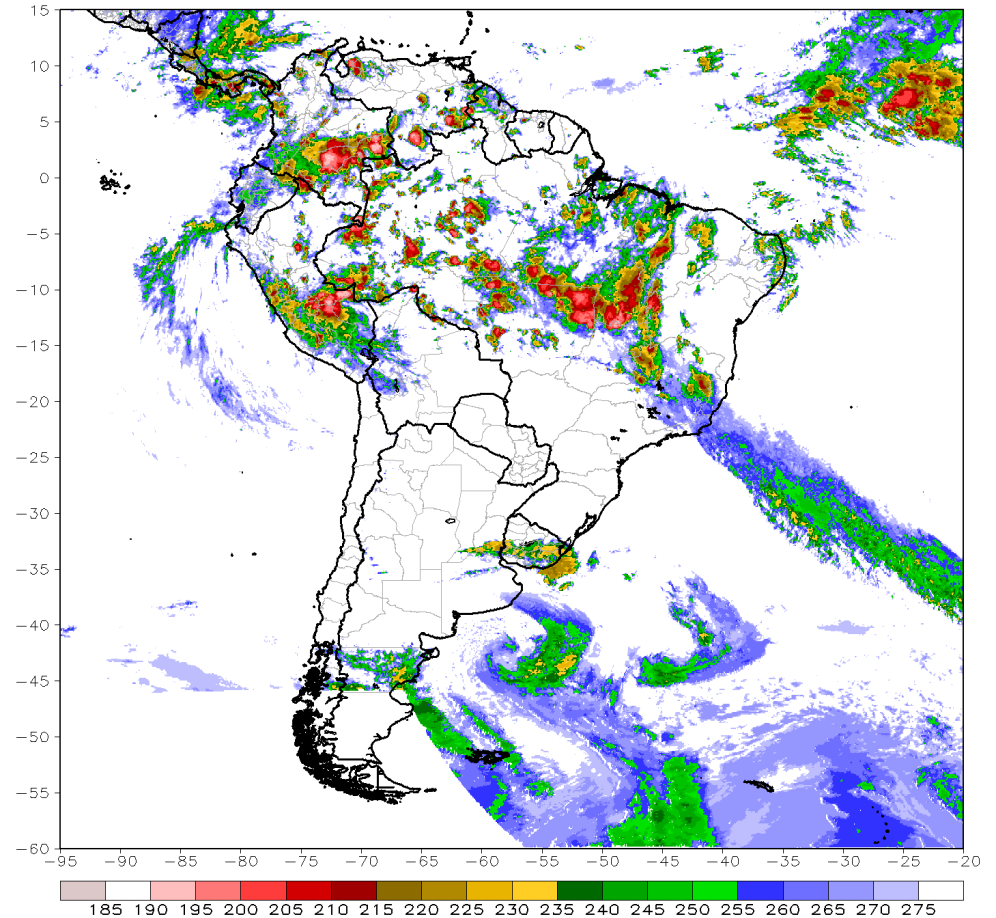
PRECIPITACION (EN MILIMETROS) ACUMULADA EN 24 HORAS

Los valores corresponden al periodo comprendido entre las  
9 hs. del 23 /11 /2017 y las 9 hs. del 24 /11 /2017



Infra-Red Temperatures (K)

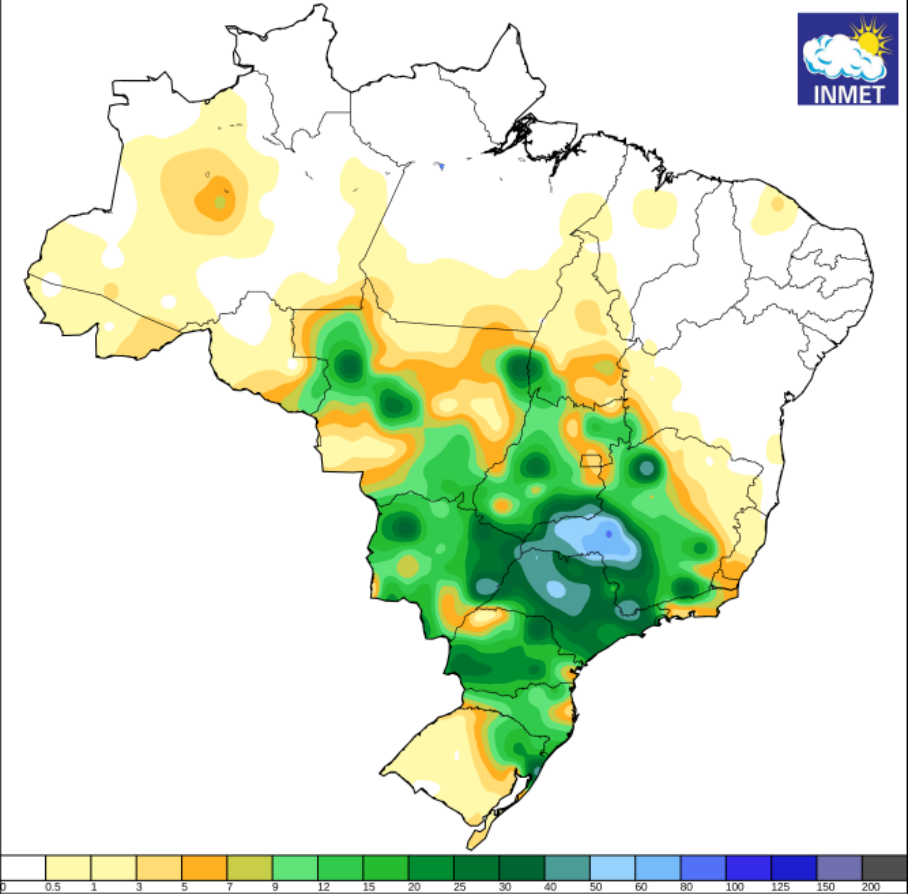
Period: 22Z 23Nov2017





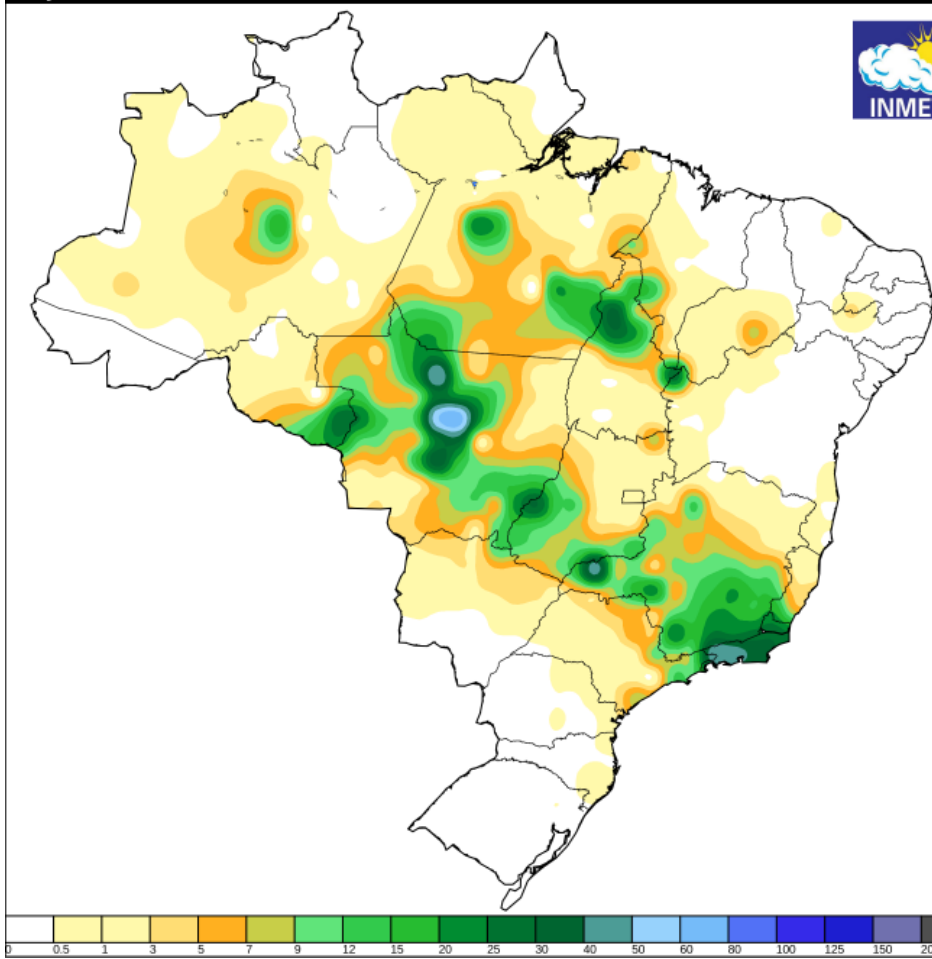
# RAINFALL NOV 24

Instituto Nacional de Meteorologia - INMET  
Precipitação Acumulada em 24 horas  
Mapa do dia 22/11/2017



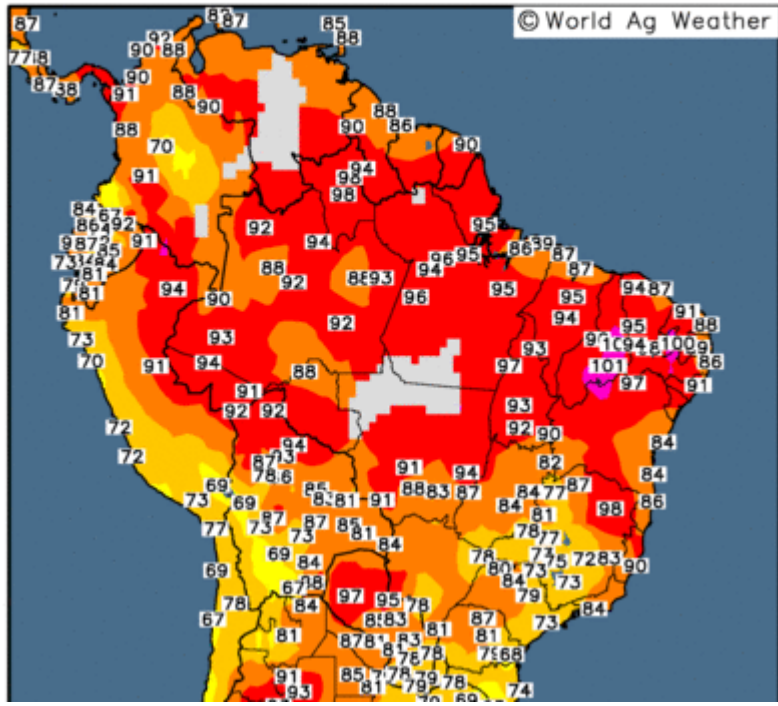
# RAINFALL NOV 23

Instituto Nacional de Meteorologia - INMET  
Precipitação Acumulada em 24 horas  
Mapa do dia 23/11/2017



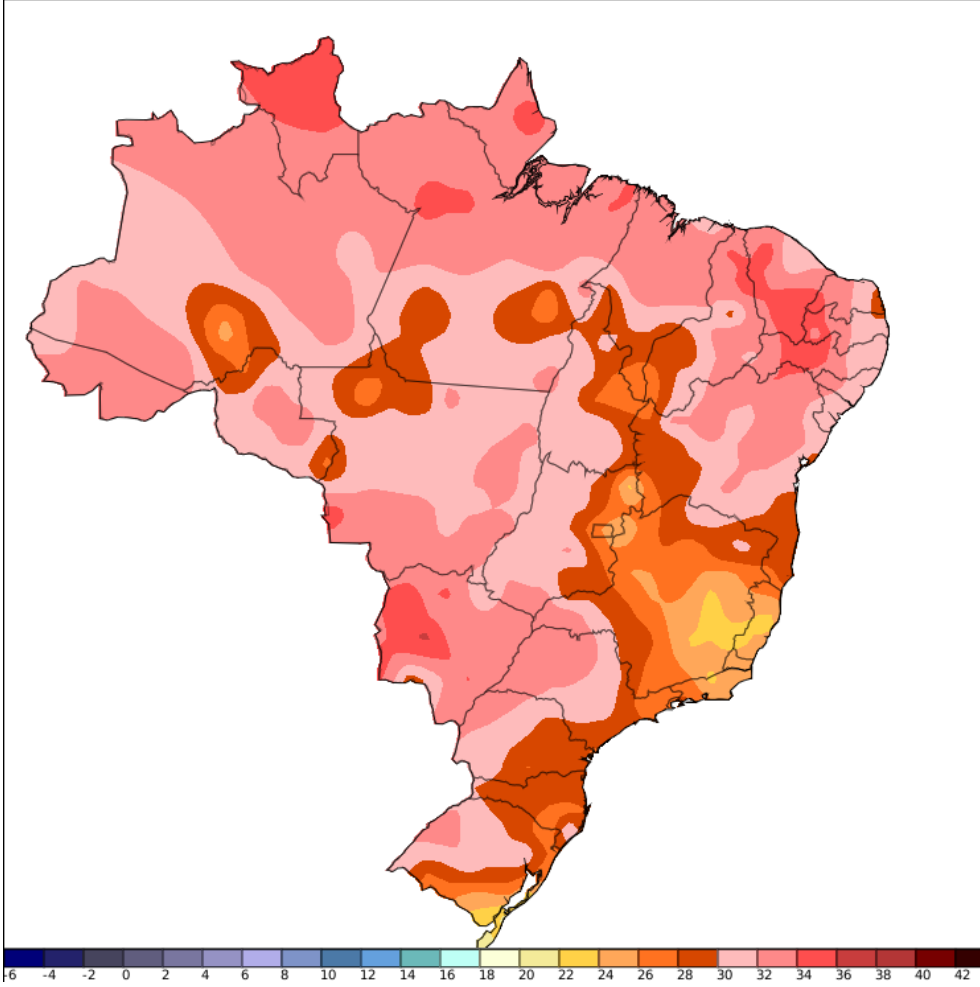
# TEMPS NOV 15- 35c/ 95f over MGDS western Parana western RGDS

Observed Maximum Temperature (°F)  
22 Nov 2017



# TEMPS NOV 16 - no heat

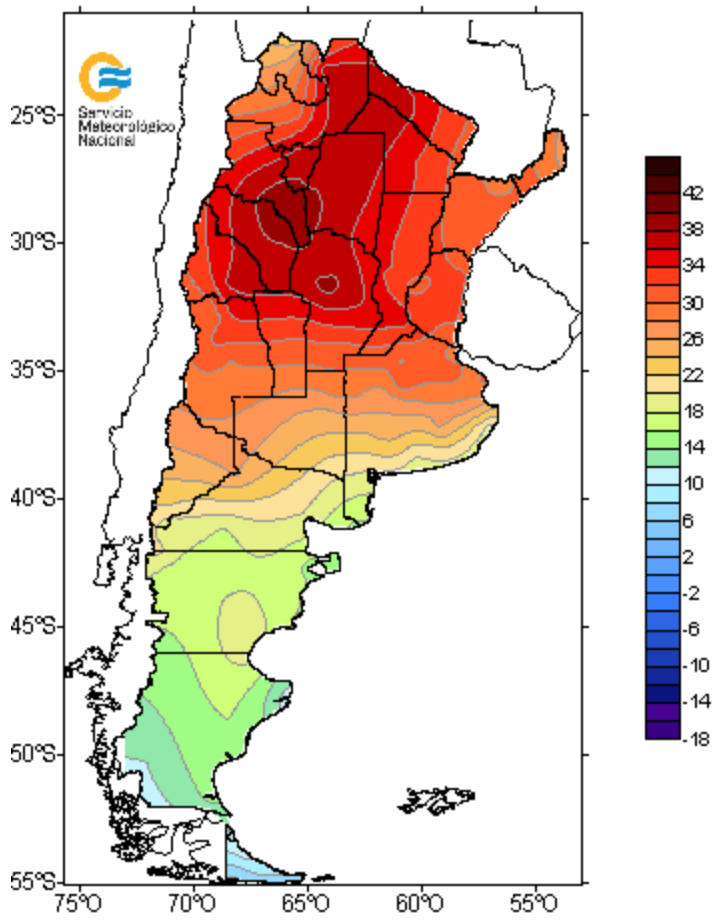
Instituto Nacional de Meteorologia - INMET  
Temperatura do Ar (°C)  
Informações Sinóticas do dia 24/11/2017 às 17:00 UTC



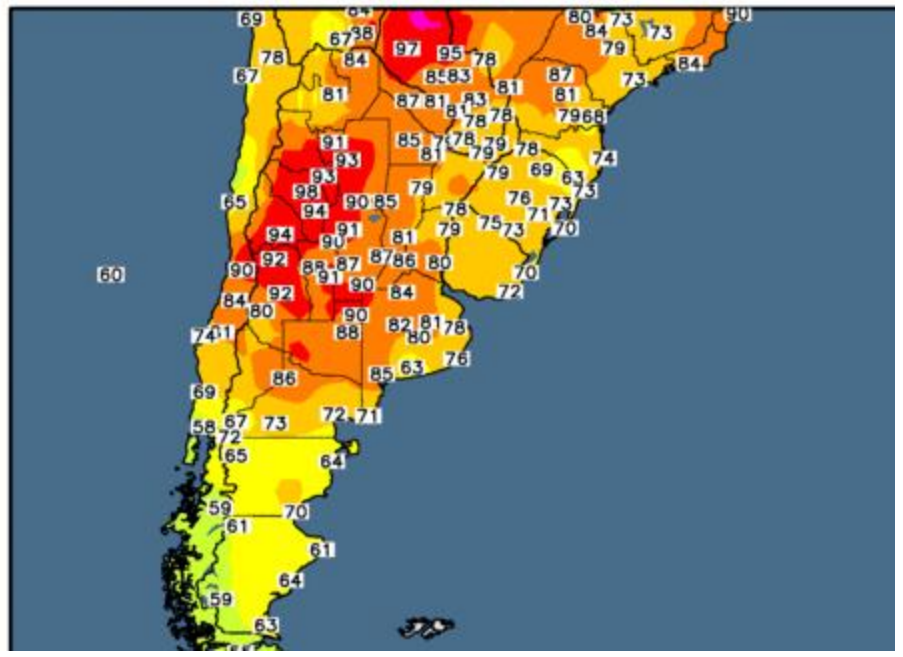
# MAX TEMPS NOV 23-- 35-42C/ 95-104F over North half of ARG

# max temps NOV 22

TEMPERATURAS MAXIMAS  
23 de Noviembre de 2017



Observed Maximum Temperature (°F)  
22 Nov 2017

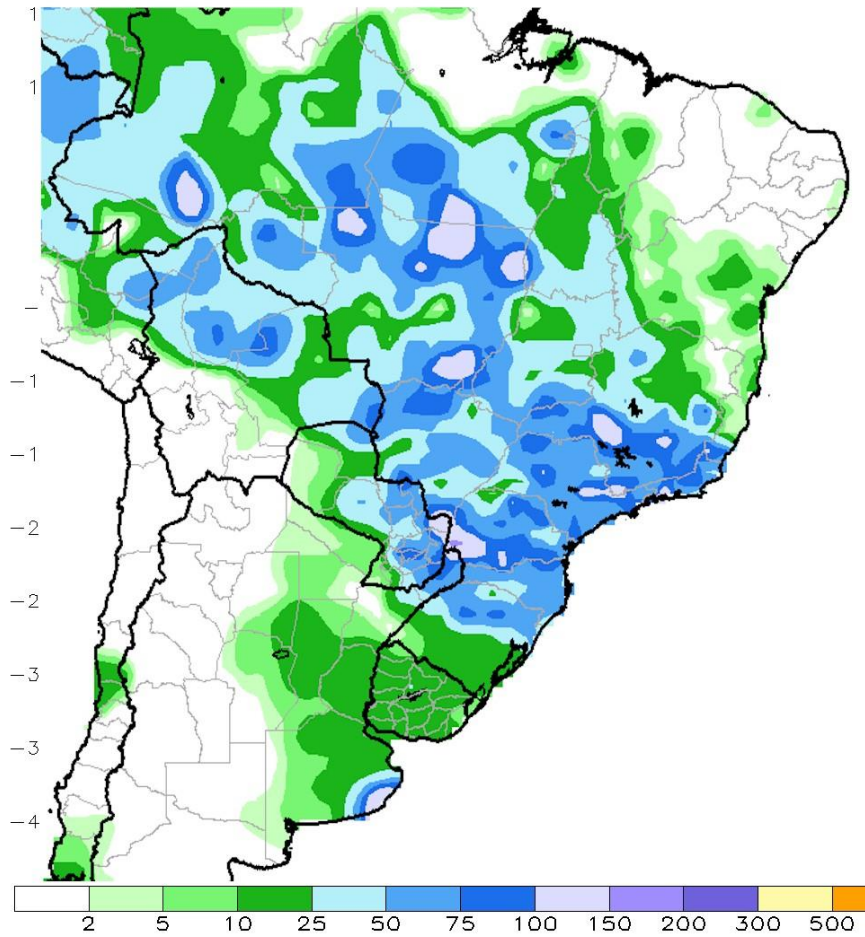


Servicio Meteorológico Nacional

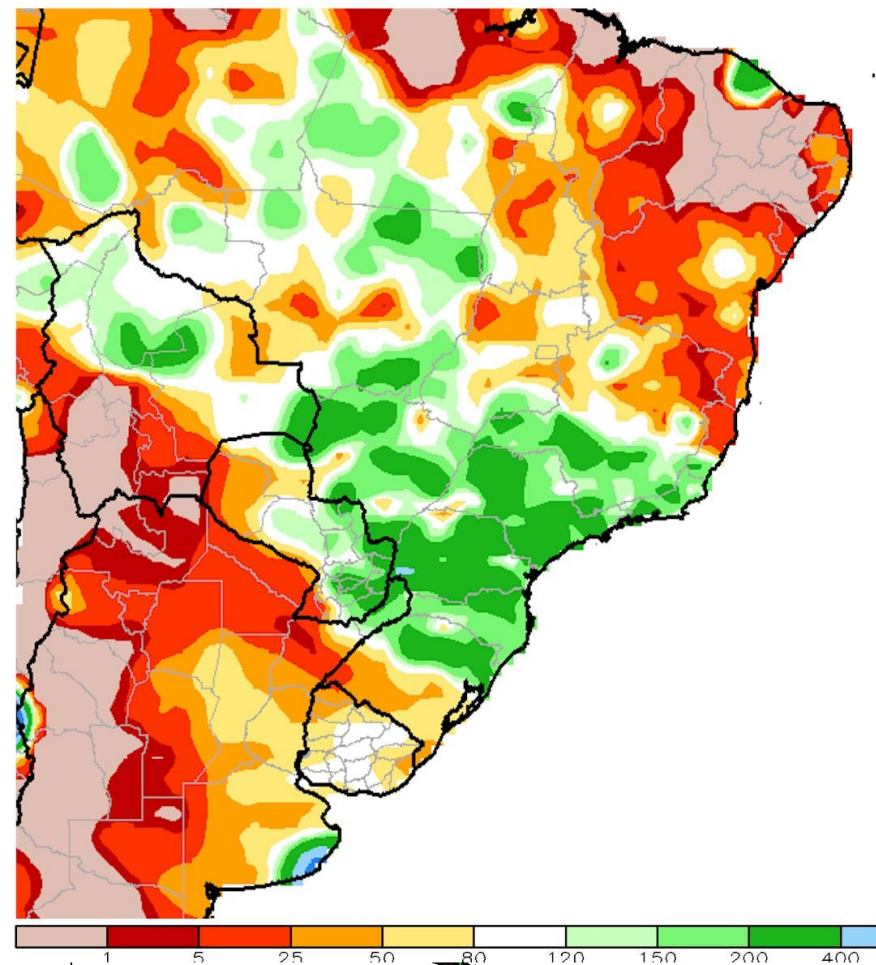
**TOTAL RAINFALL LAST 7 DAYS**  
**east ARG 10-25mm/ 0.40-1.0"**  
**much of interior Brazil 25-100mm/**  
**1-4" - Bahia dry Tocantins 10-**  
**25mm/**

**RAINFALL ANOMALIES LAST 7D**  
**very dry Bahia Tocantins & most**  
**of ARG - Most of SE Brazil**  
**Parag Mgds south Mato Grosso**  
**Sao Paulo south Goias 125-**  
**200% of Normal**

CPC Unified Gauge 7-Day Total Rainfall (mm)  
 Period: 16Nov2017 - 22Nov2017

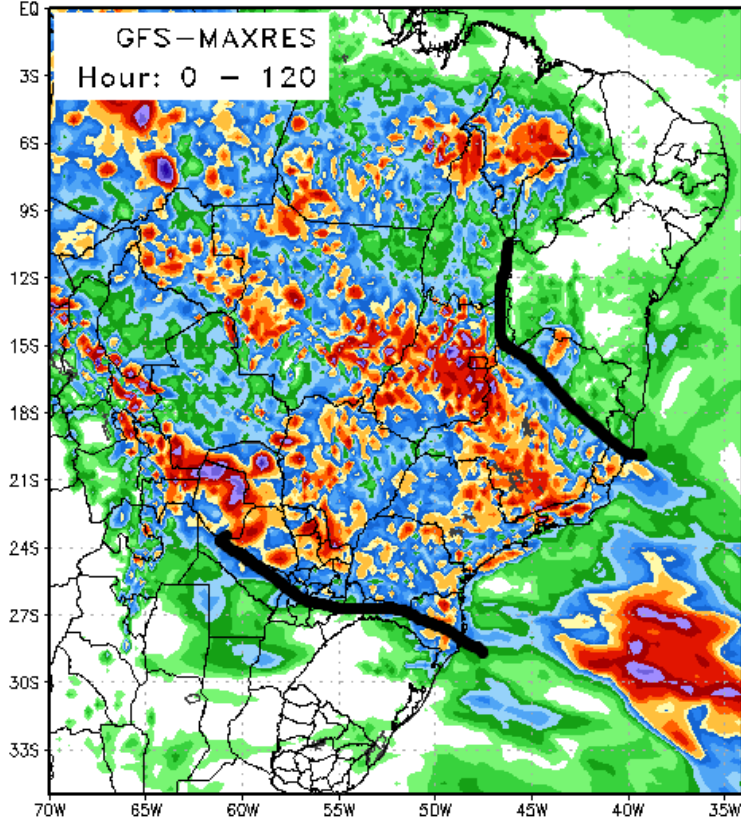


CPC Unified Gauge 7-Day Percent of Normal Rainfall (%)  
 Period: 16Nov2017 - 22Nov2017



# EXCELLENT Model agreement here.. GFS with heavier & more rain into central Minas Gerais Goias se Mato Grosso

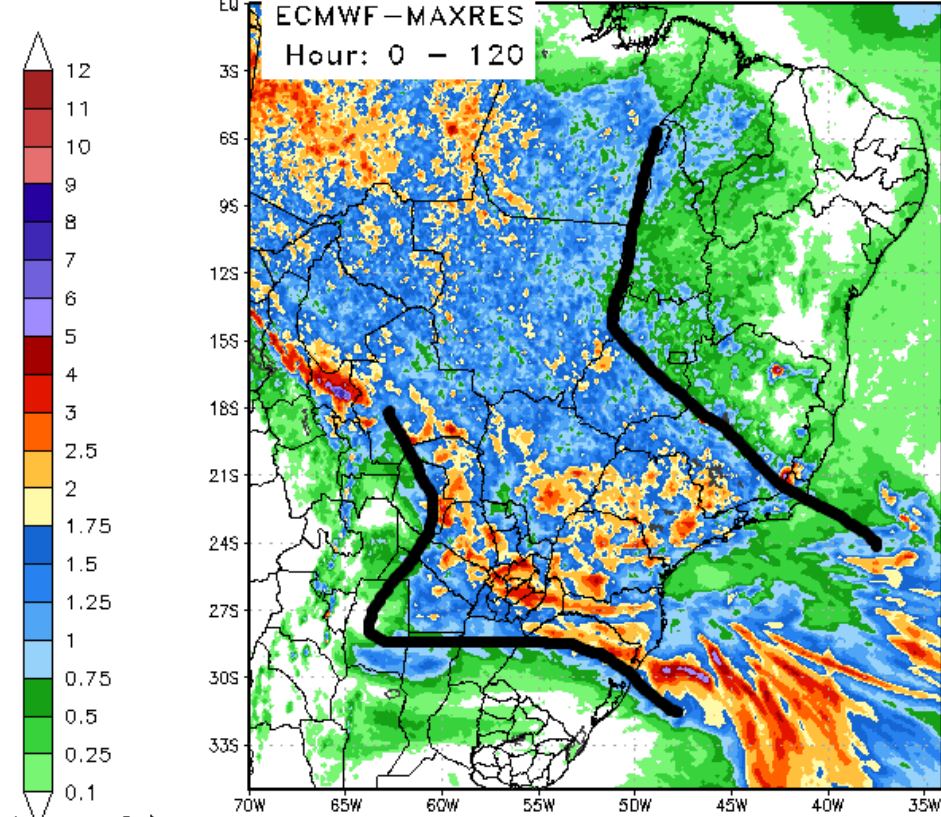
120 Hour Total Precipitation (in)  
Valid: 00z Fri 24 Nov 2017 - 00z Wed 29 Nov 2017



Max: 10.7 in  
Min: 0.0 in

StormVistaWxModels.com

120 Hour Total Precipitation (in)  
Valid: 00z Fri 24 Nov 2017 - 00z Wed 29 Nov 2017

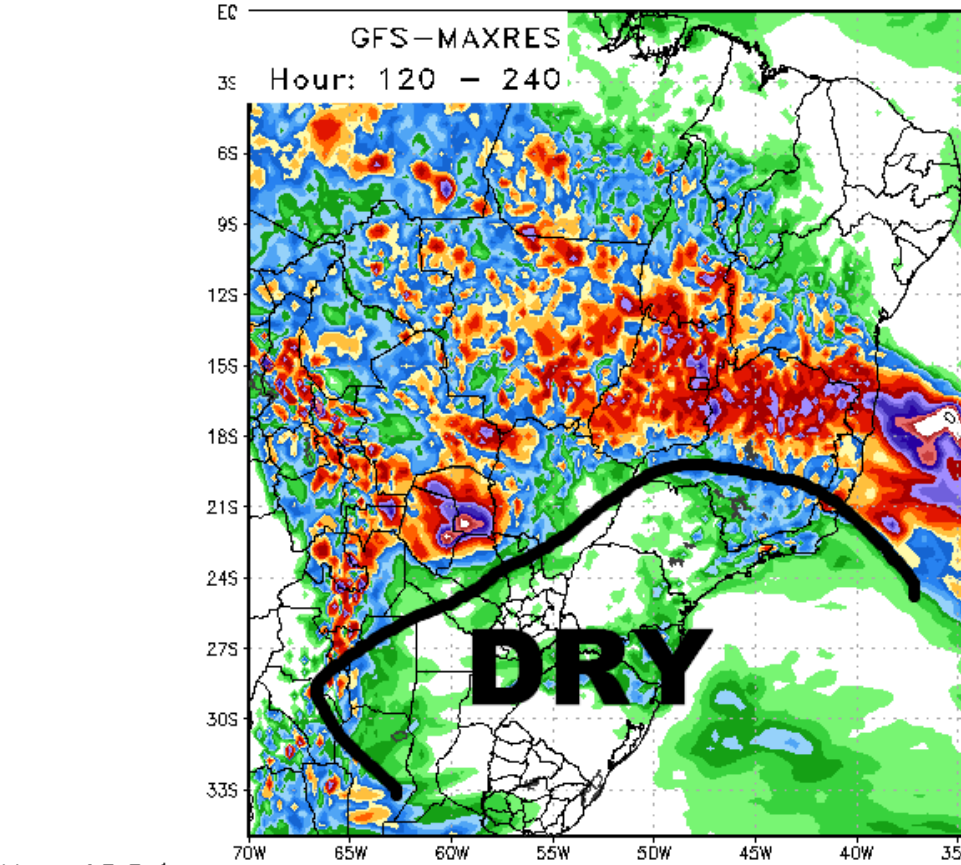


Max: 10.7 in  
Min: 0.0 in

StormVistaWxModels.com

# EXCELLENT Model agreement AGAIN . All of se Brazil & most of ARG very dry. 2-6"/ 50-150mm over 75% Minas Gerais & Goias ...1-3"/ 25-75mm 75% coverage for Mato Grosso

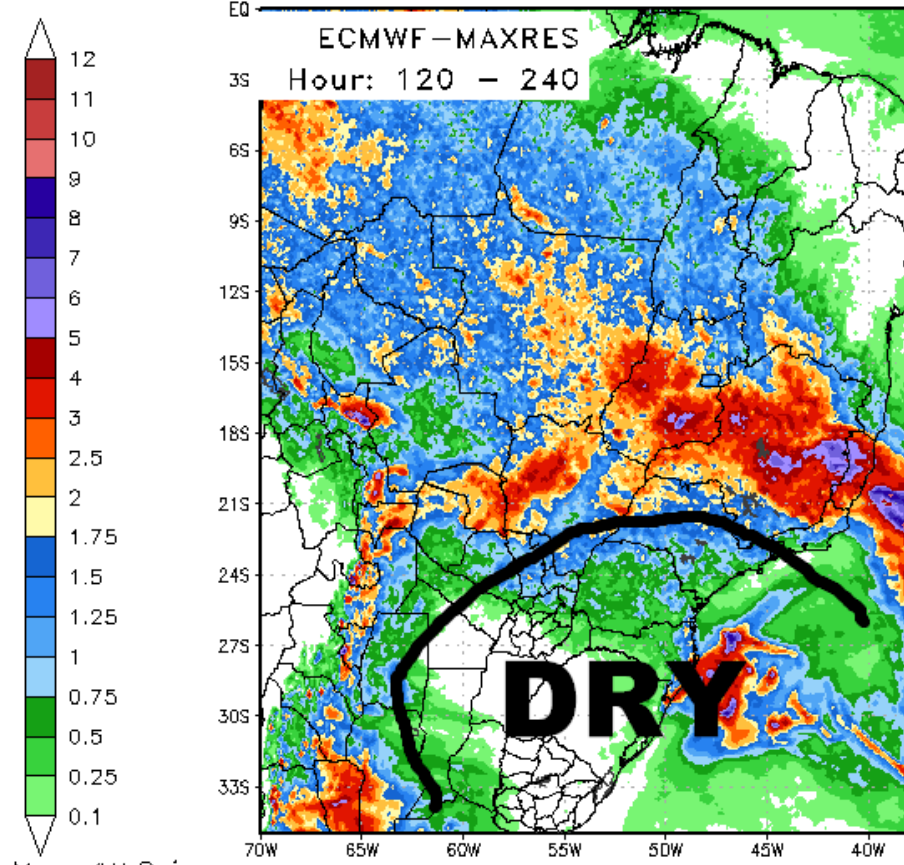
120 Hour Total Precipitation (in)  
Valid: 00z Wed 29 Nov 2017 - 00z Mon 04 Dec 2017



Max: 18.0 in  
Min: 0.0 in

StormVistaWxModels.com

120 Hour Total Precipitation (in)  
Valid: 00z Wed 29 Nov 2017 - 00z Mon 04 Dec 2017

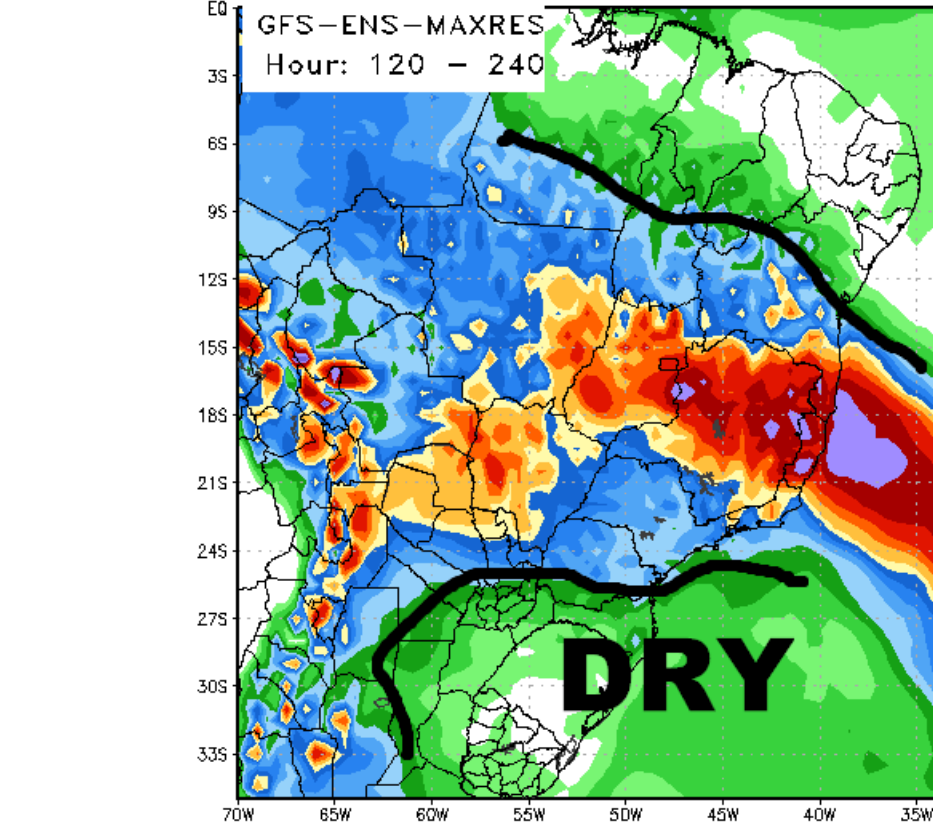


Max: 18.9 in  
Min: -0.0 in

StormVistaWxModels.com

# EXCELLENT Model agreement AGAIN . All of se Brazil & most of ARG very dry. 2-5"/ 50-125mm over 75% Minas Gerais & Goias ...1-3"/ 25-75mm 75% coverage for Mato Grosso

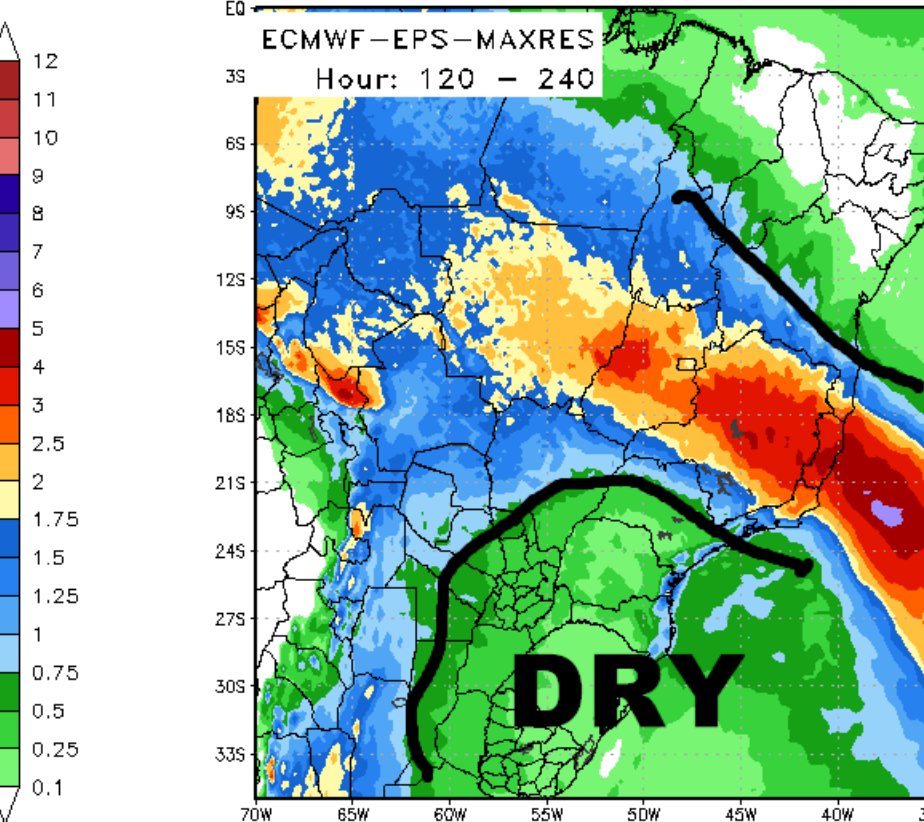
120 Hour Total Precipitation (in)  
Valid: 00z Wed 29 Nov 2017 - 00z Mon 04 Dec 2017



Max: 7.1 in  
Min: 0.0 in

StormVistaWxModels.com

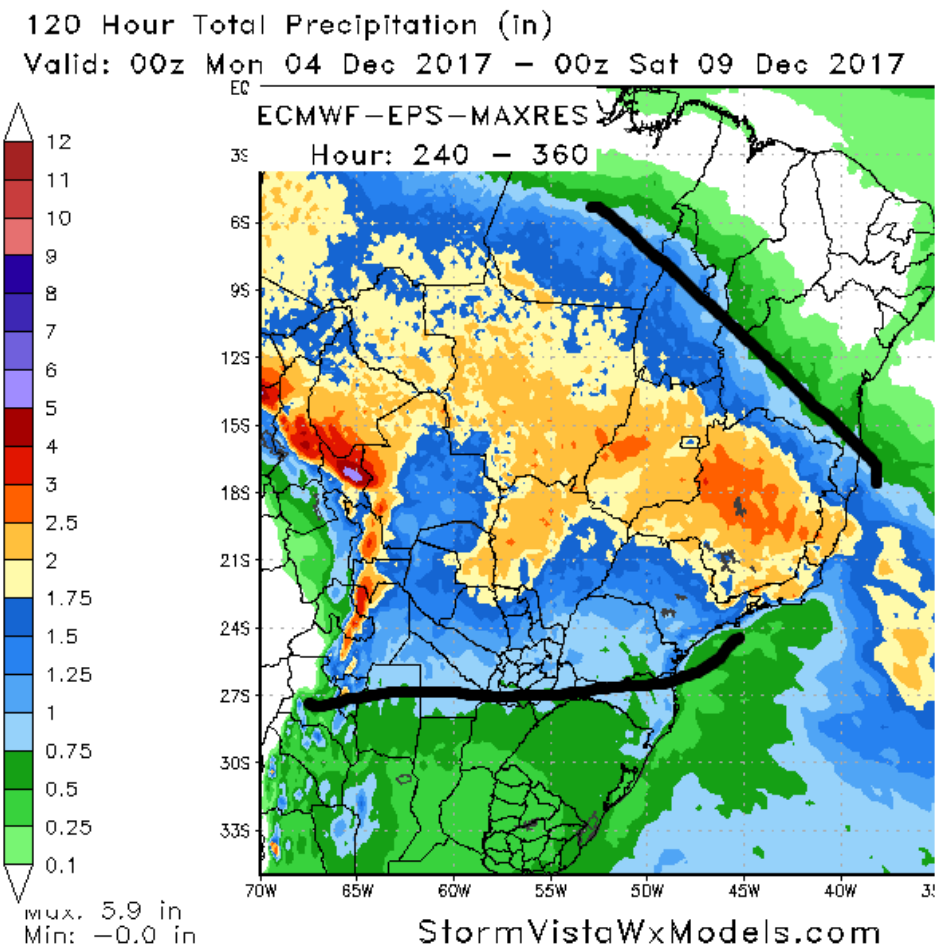
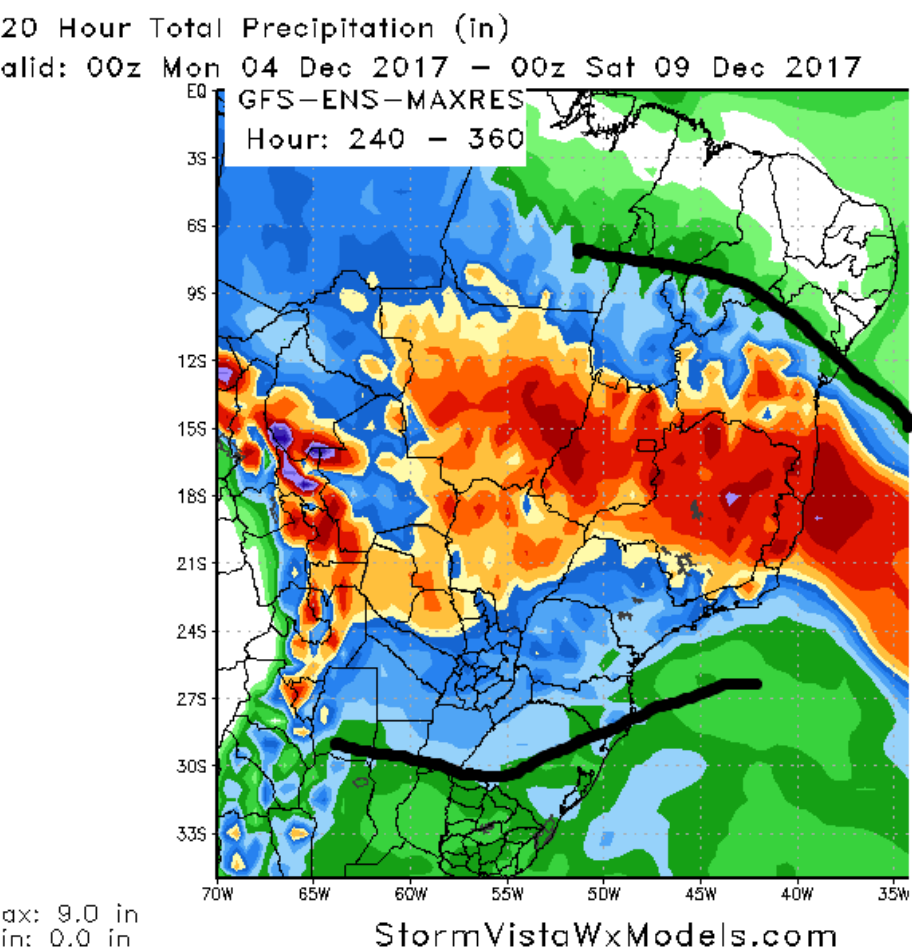
120 Hour Total Precipitation (in)  
Valid: 00z Wed 29 Nov 2017 - 00z Mon 04 Dec 2017



max: 5.4 in  
Min: 0.0 in

StormVistaWxModels.com

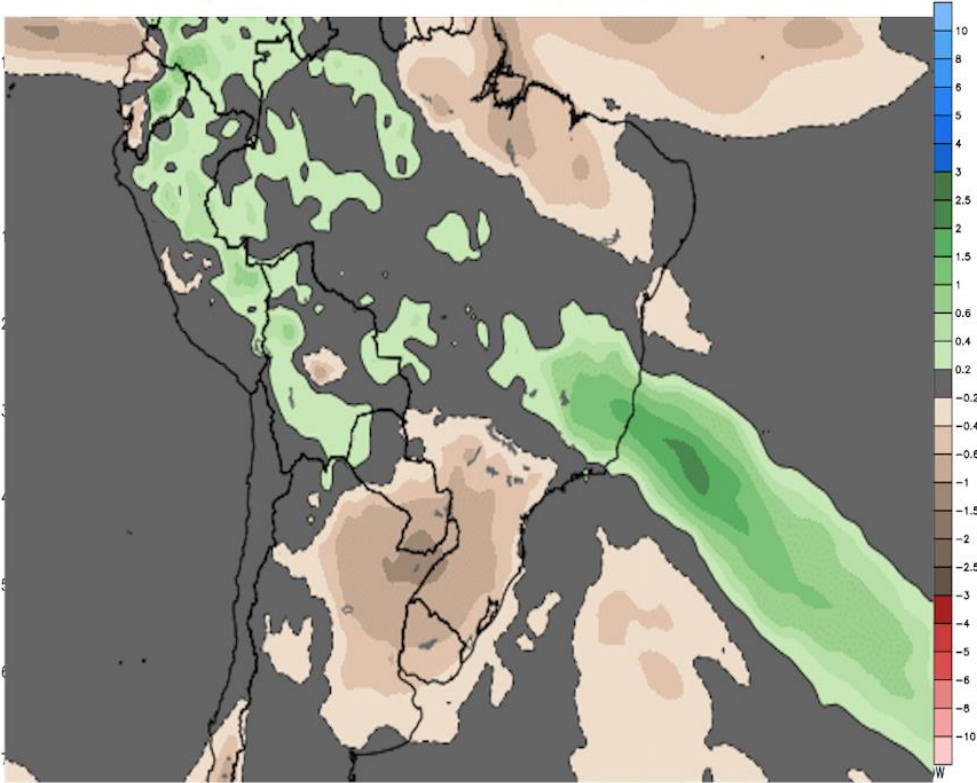
**NO CHANGES HERE...large major area of widespread rains in W- E alignment Minas Gerais Goias Mato Grosso MGDS 1-4"/ 25-100mm -- most of ARG "mostly dry".**





ECMWF EPS Ensemble Mean 7-day Avg Precipitation Anomaly [inch]  
Init: 00Z23NOV2017 -- [252] hr --> Valid on Thu 00Z14DEC2017 Day 3.5 - Day 10.5

Min|Max Anom: -7.3 | 3.0 inch

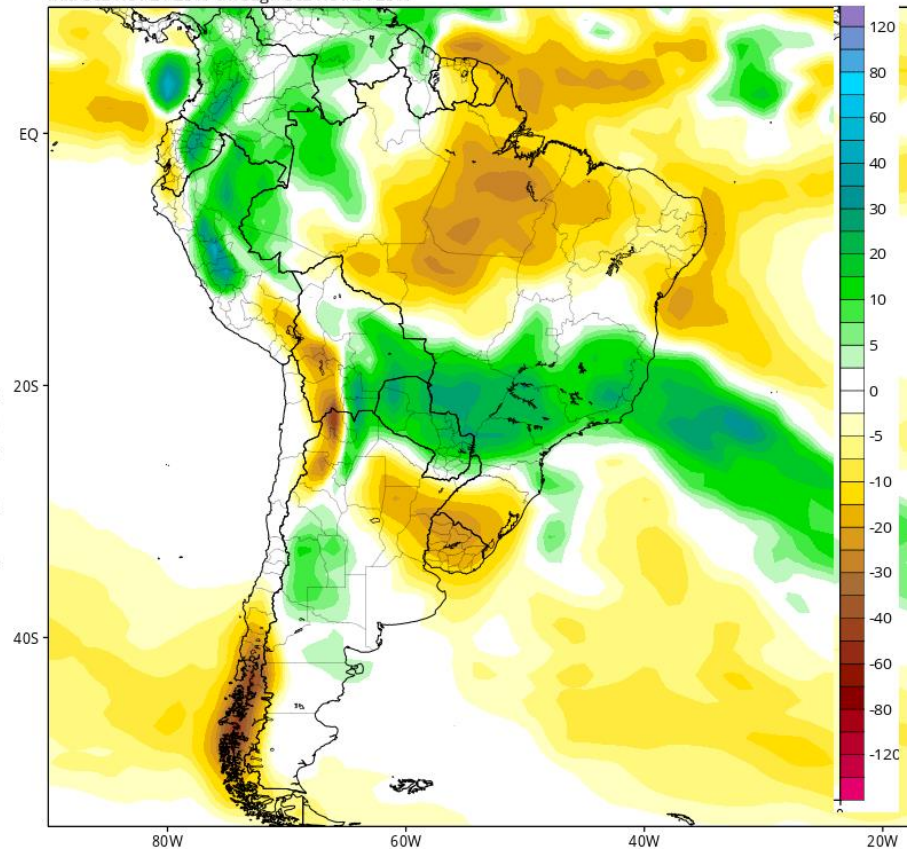


Accumulation between 00Z07DEC2017-00Z14DEC2017 | ECMWF EPS 1997-2016 Hindcast Climatology

CFSv2 Accumulated Precip. Anomaly (mm) from 00z08Dec2017 to 00z15Dec2017 (Days 15-21)

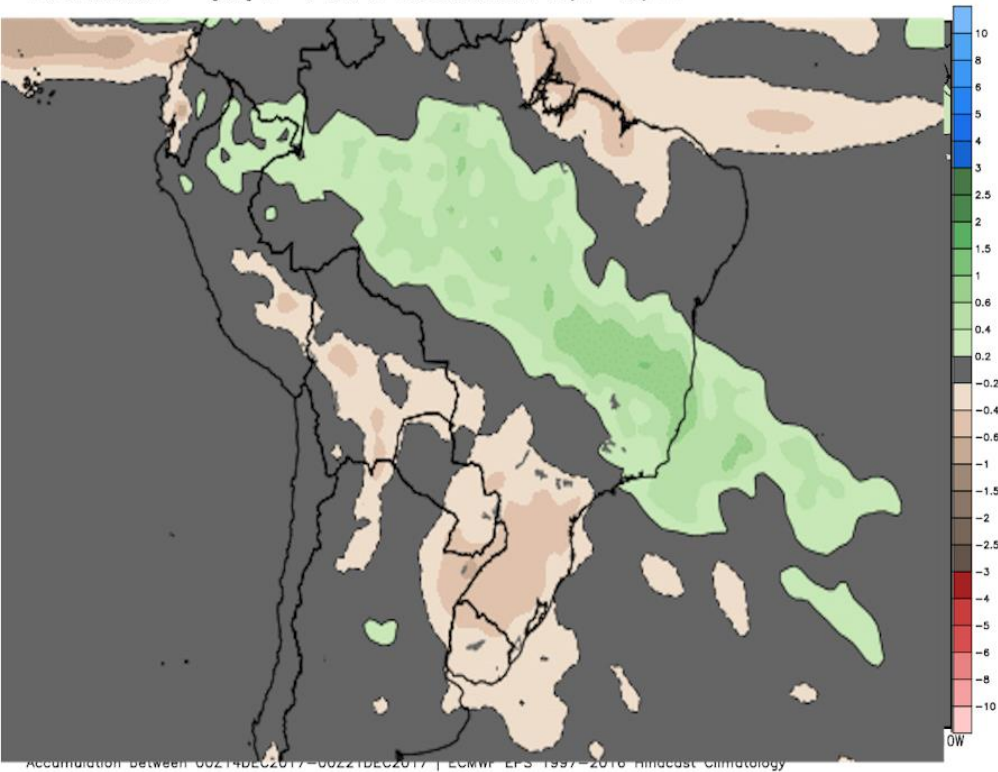
Average of last 48 forecasts (12 runs x 4 members)

Init: 06z Nov 21 2017 through 00z Nov 24 2017



ECMWF EPS Ensemble Mean 7-day Avg Precipitation Anomaly [inch]  
Init: 00Z23NOV2017 -- [336] hr --> Valid on Thu 00Z21DEC2017 Day 7 - Day 14

Min|Max Anom: -2.5 | 1.6 inch

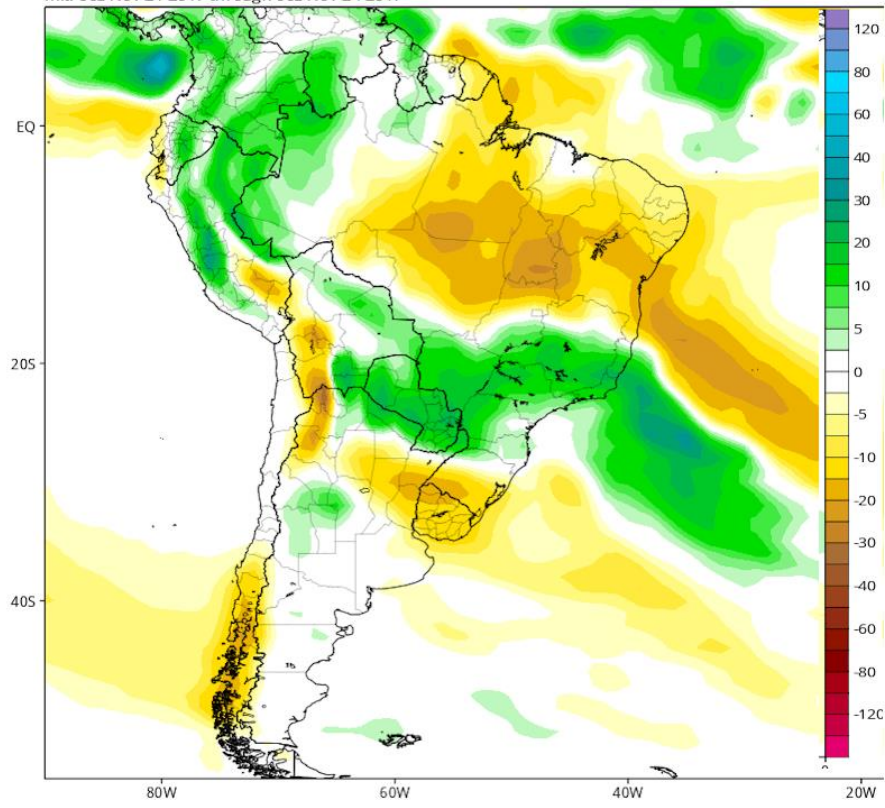


Accumulation between 00z14DEC2017-00z21DEC2017 | ECMWF EPS 1997-2016 hindcast climatology

CFSv2 Accumulated Precip. Anomaly (mm) from 00z15Dec2017 to 00z22Dec2017 (Days 22-28)

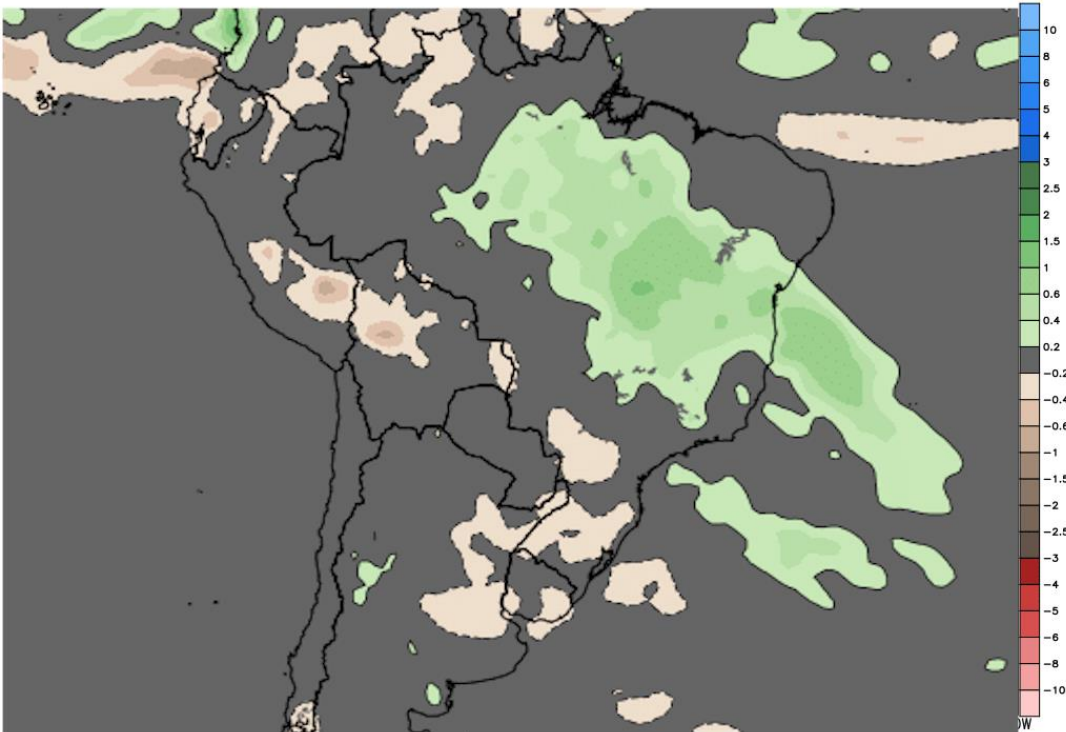
Average of last 48 forecasts (12 runs x 4 members)

Init: 06z Nov 21 2017 through 00z Nov 24 2017



ECMWF EPS Ensemble Mean 7-day Avg Precipitation Anomaly [inch]  
Init: 00Z23NOV2017 -- [420] hr --> Valid on Thu 00Z28DEC2017 Day 10.5 - Day 17.5

Min|Max Anom: -2.3 | 2.0 inch

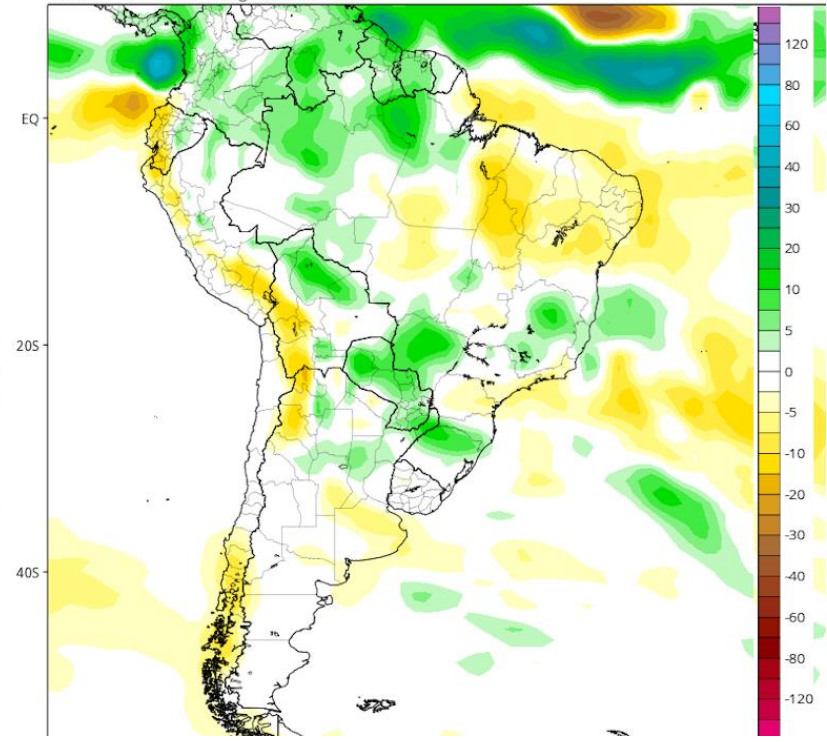


Accumulation between 00Z21DEC2017-00Z28DEC2017 | ECMWF EPS 1997-2016 Hindcast Climatology

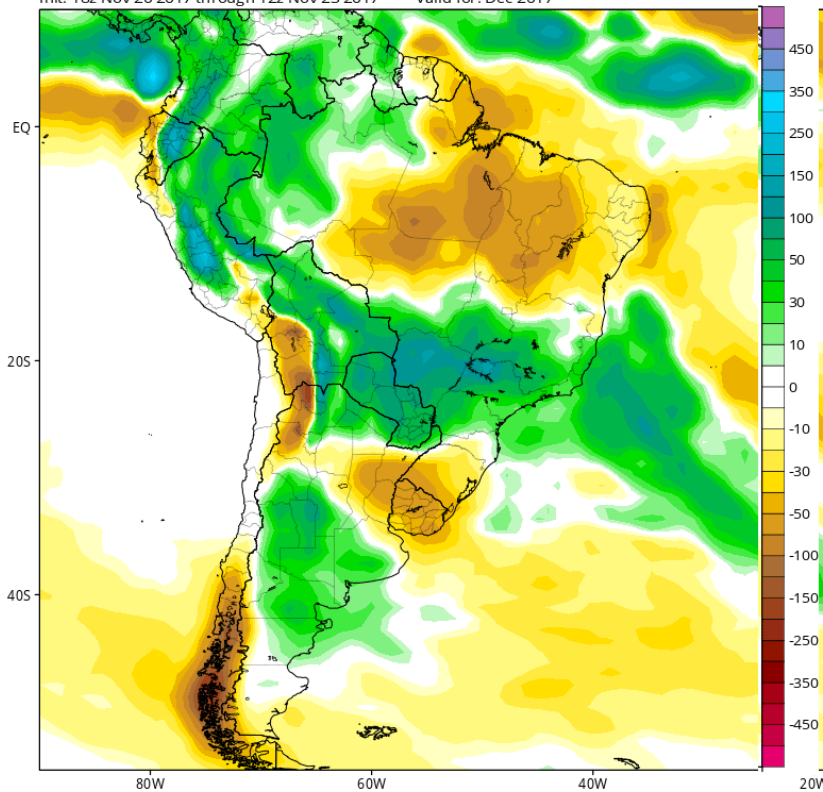
CFSv2 Accumulated Precip. Anomaly (mm) from 00z22Dec2017 to 00z29Dec2017 (Days 29-35)

Average of last 48 forecasts (12 runs x 4 members)

Init: 06z Nov 21 2017 through 00z Nov 24 2017



Average of last 12 forecasts (12 runs x 1 members)  
Init: 18z Nov 20 2017 through 12z Nov 23 2017 Valid for: Dec 2017



**NEW CFS FOR DEC 2017**  
**better rains over MGDS**  
**south Goias Sao Paulo**  
**south Minas Gerais Parana**  
**& over Buenos Aires La**  
**Pampa**

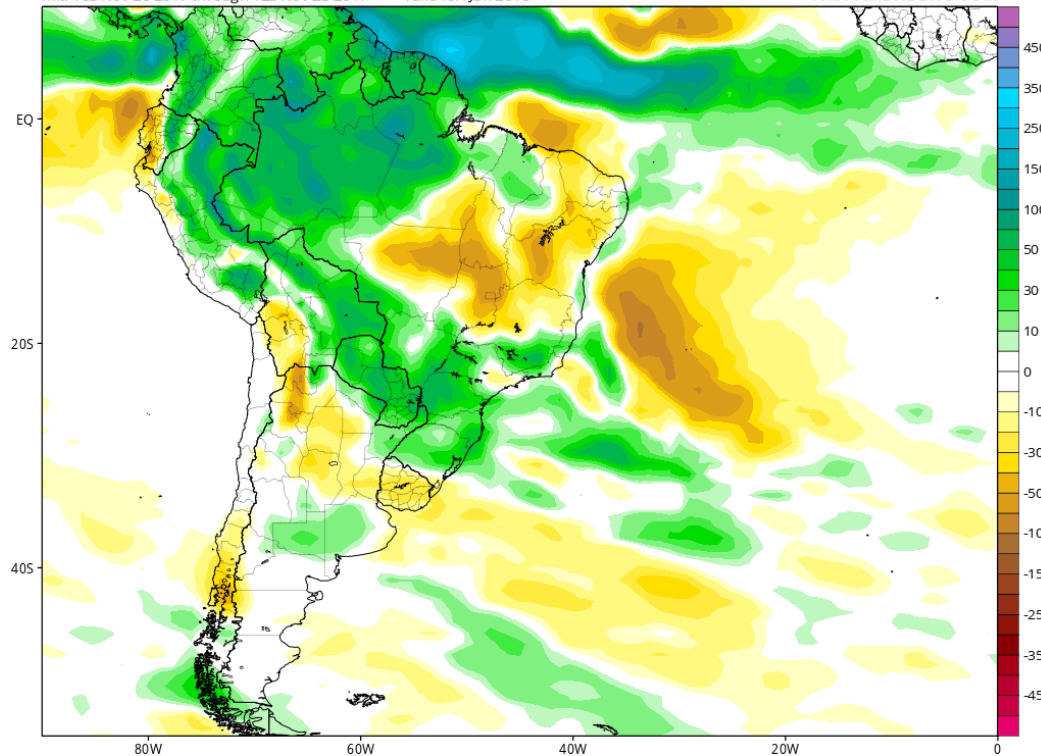
**CFS FOR JAN 2017**  
**the large dryness area**  
**over central Brazil**  
**weaker more rain over**  
**Parg Sao Paulo Parana**  
**RGDS Still dry over**  
**central ARG**

CFSv2 Total Accumulated Precipitation Anomaly (mm)

Average of last 12 forecasts (12 runs x 1 members)

Init: 18z Nov 20 2017 through 12z Nov 23 2017 Valid for: Jan 2018

TROPICALTIDBITS.COM



**Sometimes I wonder whether the world is being run by smart people who are putting us on, or by imbeciles who really mean it.**

**MARK TWAIN**

