

**US .. SOUTH AMERICA
GRAIN WEATHER
ISSUES**

**as of FRIDAY
3 NOVEMBER 2017**



LOCATED in Richmond VA

Featured frequently on AGRI-MONEY

EMAIL WXRISK@VERZION .NET



@WXRISK.COM



<https://www.facebook.com/WxRisk>

wxrisk@gmail.com

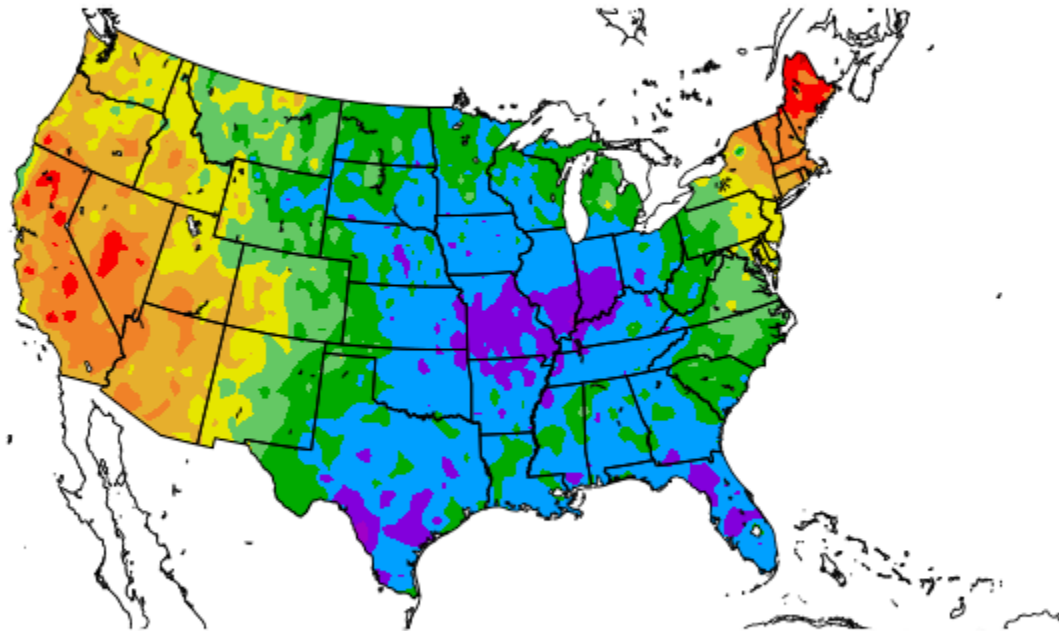


Who we are

WxRisk is a private, subscription, Weather Forecasting Company. Founded in 1998, the company specializes in providing the most detailed and accurate weather forecasts for Days 3 through 30, as well as seasonal forecasts, for Grain Traders, Farmers, Energy Traders, Construction companies, Oil and Heat associations, Wineries and other businesses impacted by weather. Geographic areas covered include, but are not limited to: The Middle Atlantic region of the U.S., all of the Continental U.S., South America, Europe, Ukraine/Southern and western Russia, Kazakhstan, India, Australia & China. Current and previous clients include large and mid-size commodity trading houses, energy firms, gas and propane companies, ski resorts, individual farmers and business involved in providing transportation and construction services throughout the world.

TEMP ANOMALIES LAST 7 DAYS

Departure from Normal Temperature (F)
10/26/2017 - 11/1/2017

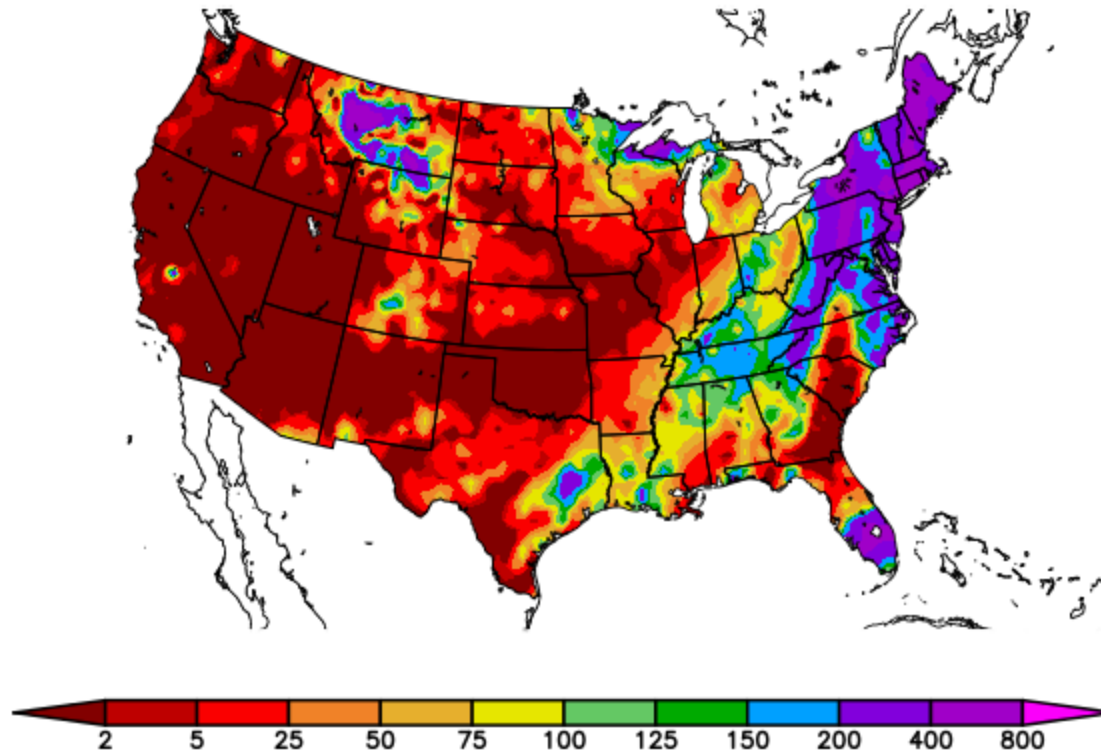


Generated 11/2/2017 at HPRCC using provisional data.

NOAA Regional Climate Centers

RAINFALL PAST 7 DAYS—

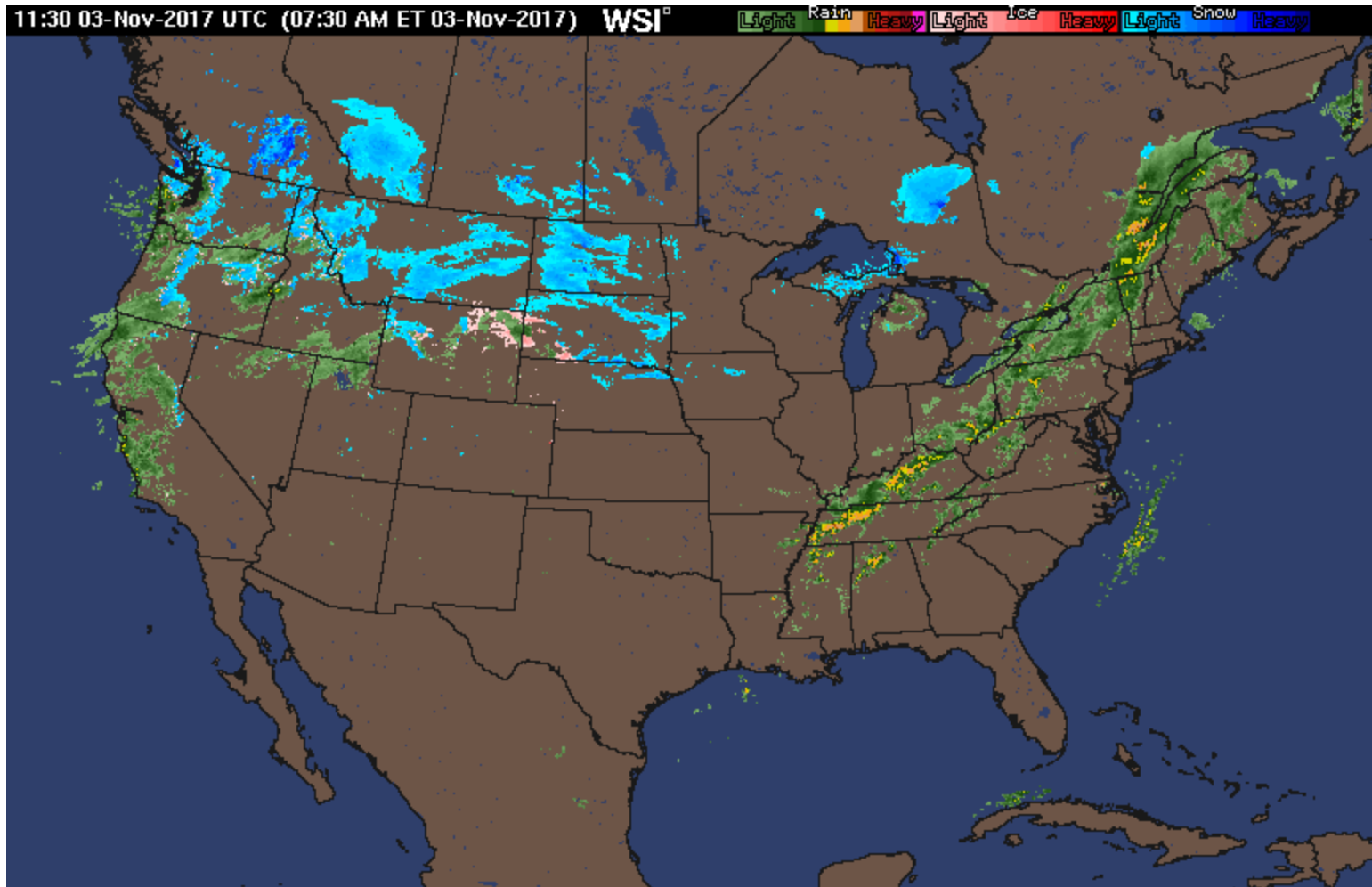
Percent of Normal Precipitation (%)
10/26/2017 – 11/1/2017



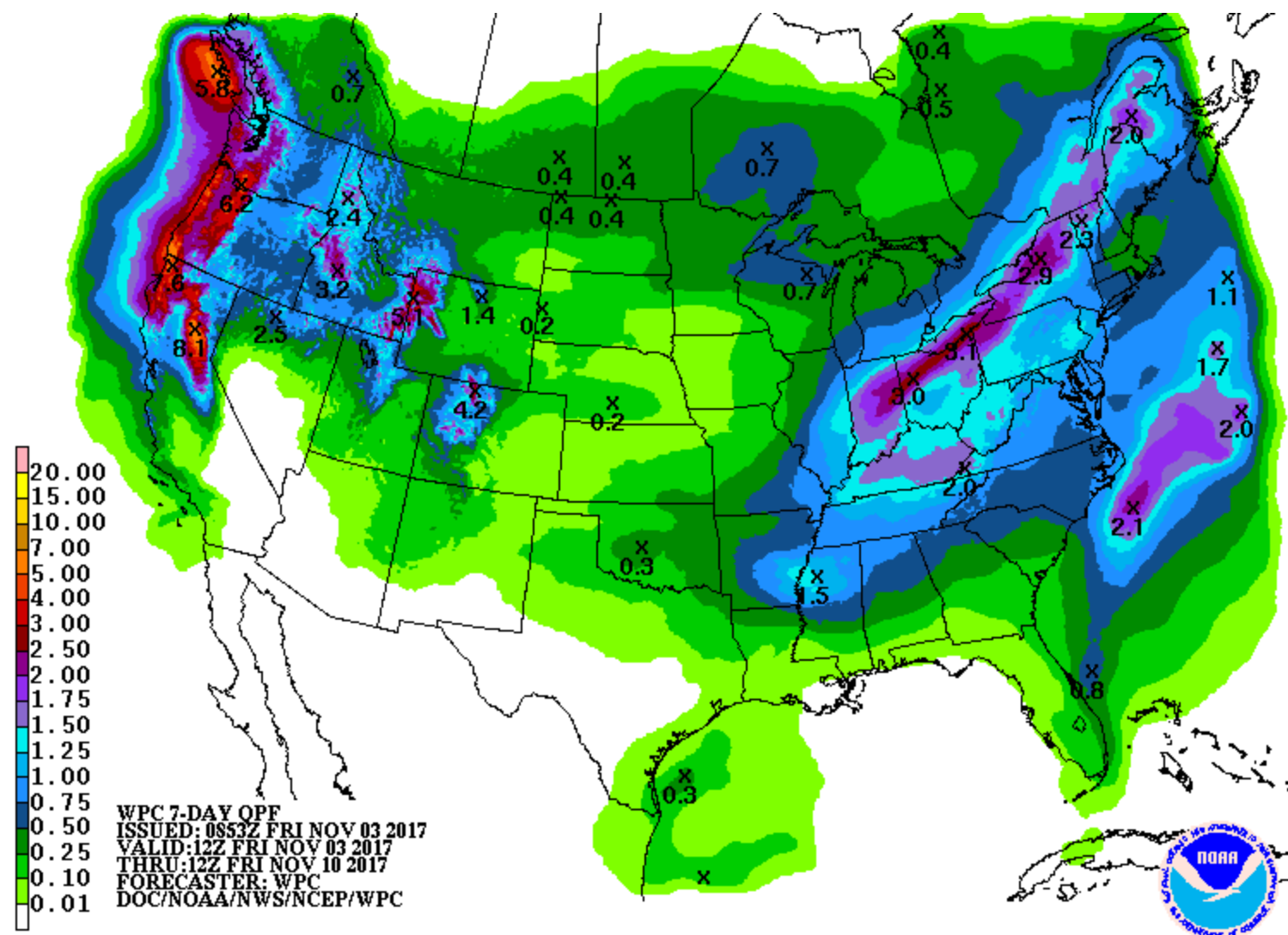
Generated 11/2/2017 at HPRCC using provisional data.

NOAA Regional Climate Centers

RADAR 7AM FRIDAY



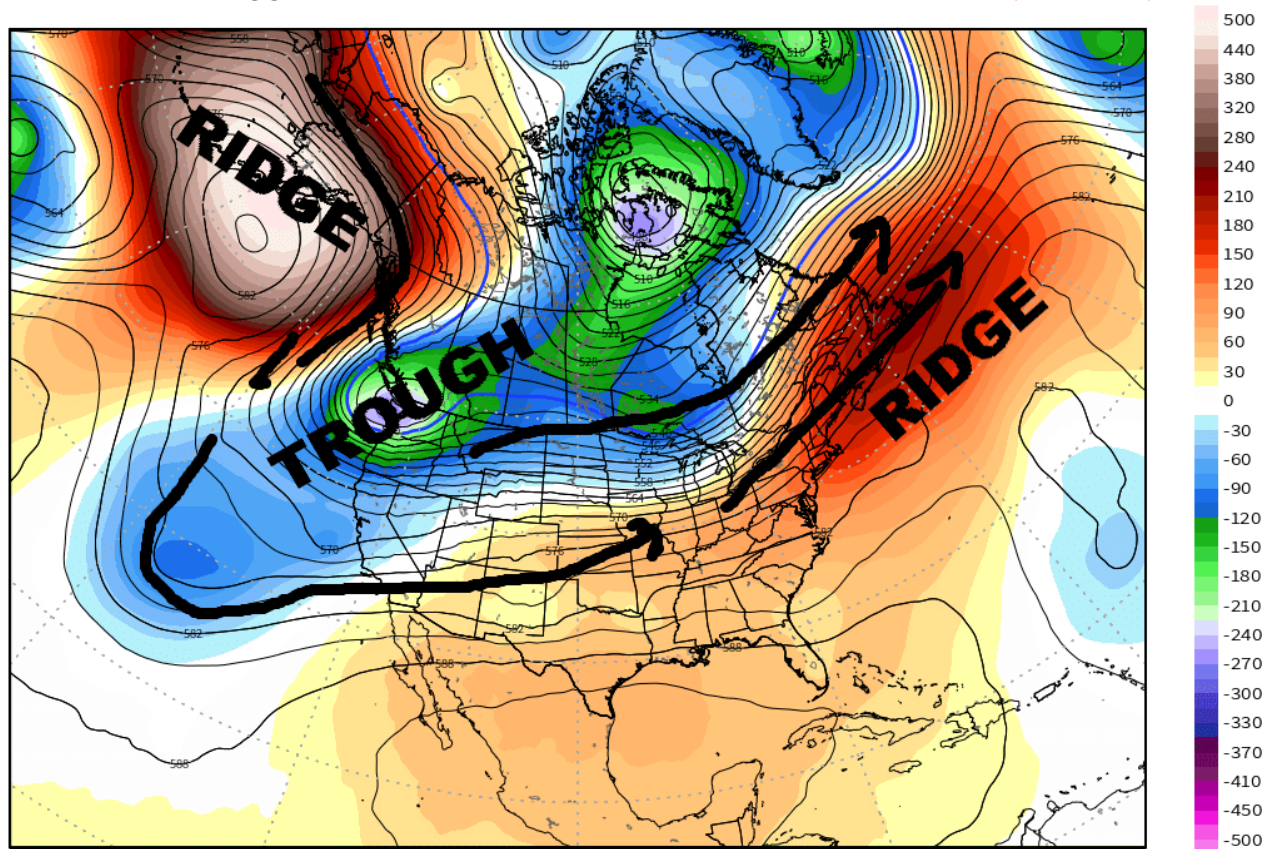
NWS OFFICIAL RAINFALL NEXT 7 DAYS



CURRENET JET STREAM 500mb PATTERN - Huge ridge over Alaska keeps deep trough over Pac nw / sw Canada.. RIDGE over East Coast. COLD air builds over Pac NE/ North Rockies sw Canada. Big temp contrast across Midwest...

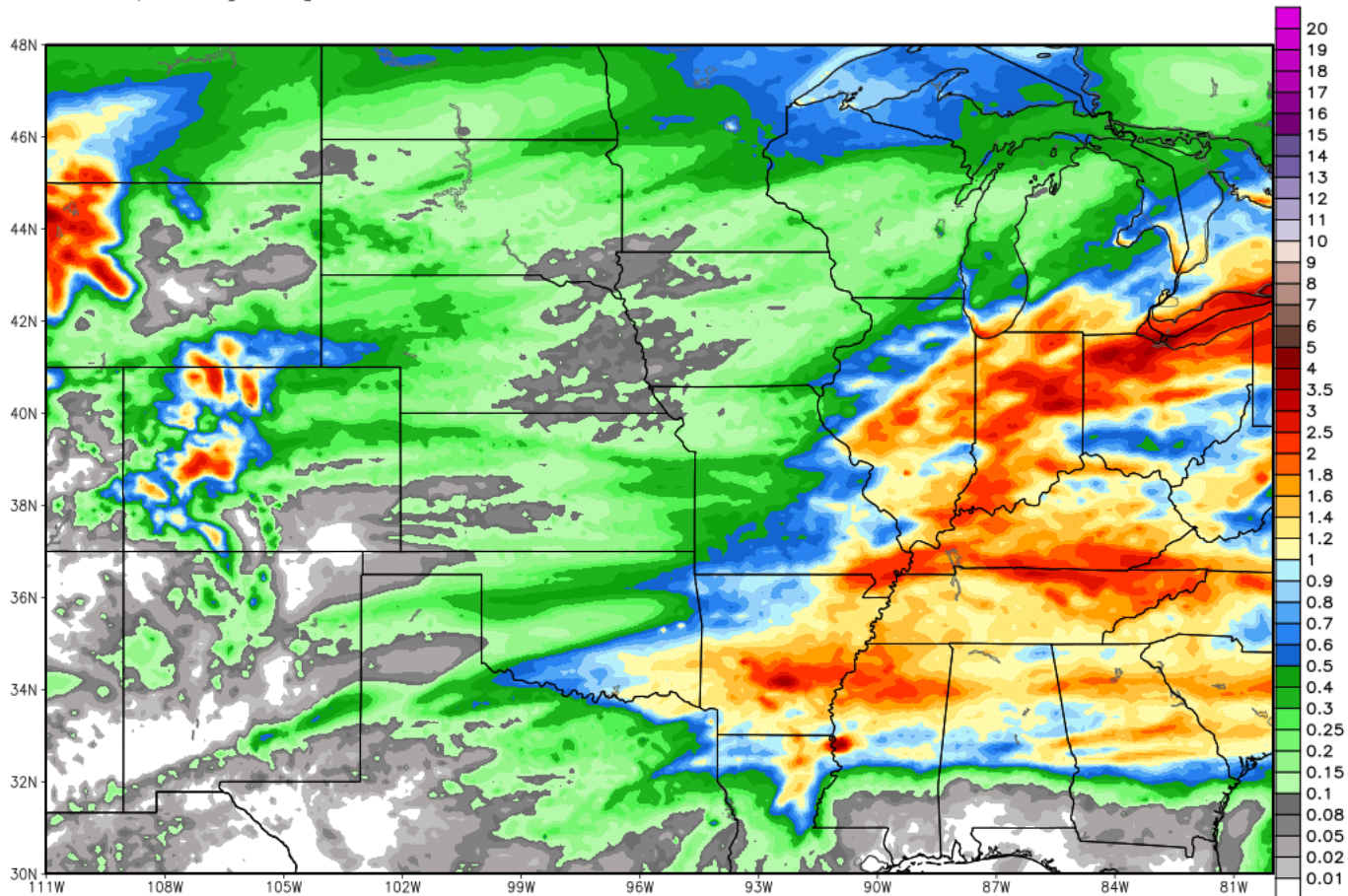
ECMWF EPS 500 hPa Geopotential Height [dm] & Anomaly [m] | Ensemble Mean | 1997-2006 Hindcast M-Climate
Init: 00Z03NOV2017 -- [6] hr --> Valid Fri 06Z03NOV2017

MIN|MAX: -264.4 | 520.4 m



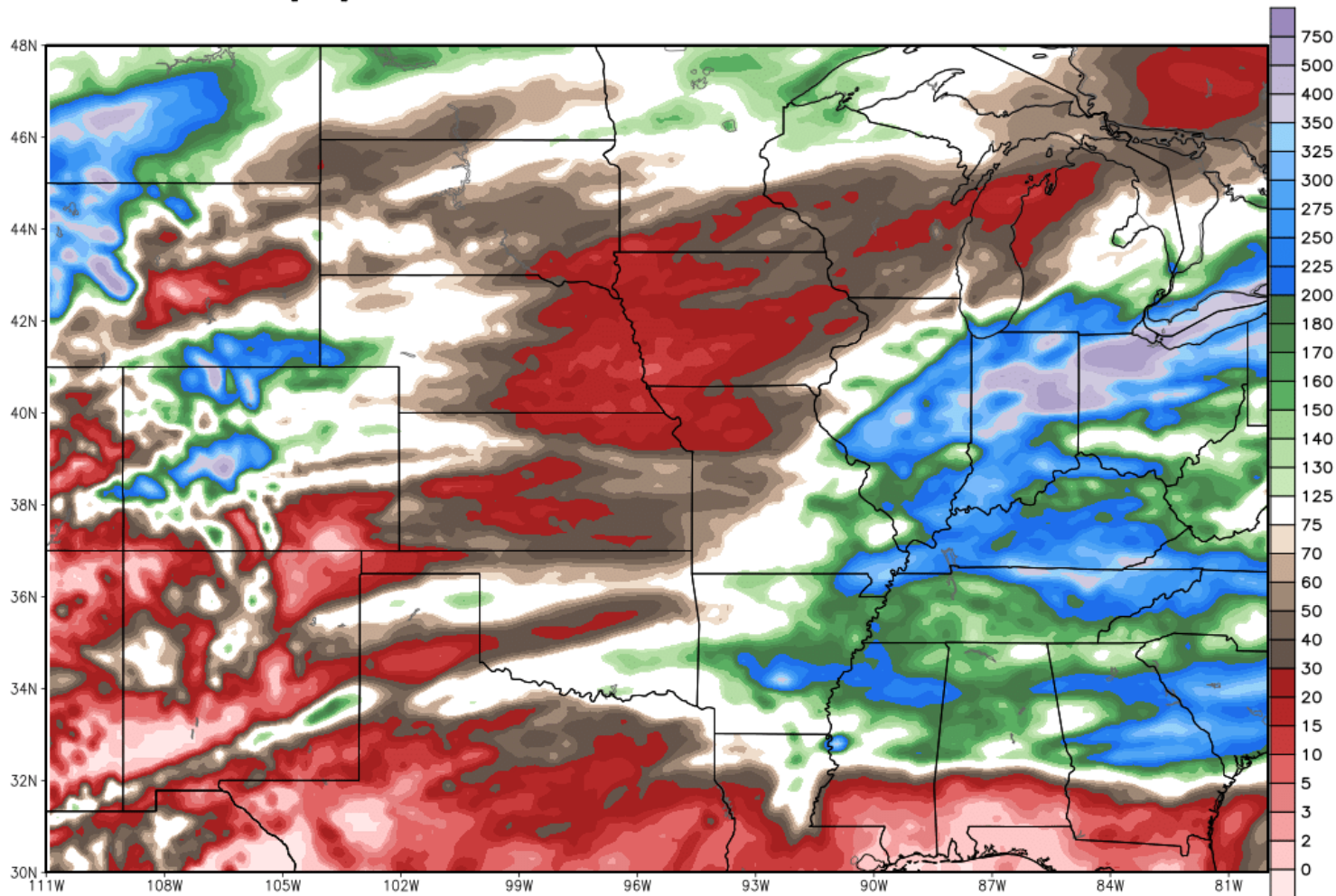
RAINFALL from EURO Models next 7 DAYS - dry all of Plains & WCB -- ECB 0.75-3.5"/ 20-90mm high % coverage

ECMWF 7-day Precipitation [inch] INIT: 00Z03NOV2017 fx: [168] hr --> Fri 00Z10NOV2017
Total Precipitation [inches] between 00Z03NOV2017 -- 00Z10NOV2017



7 DAY RAINFALL ANOMALIES

ECMWF 7-day Precip Anomaly [% of normal] between 00Z03NOV2017 -- 00Z10NOV2017
INIT: 00Z03NOV2017 fx: [168] hr --> Fri 00Z10NOV2017

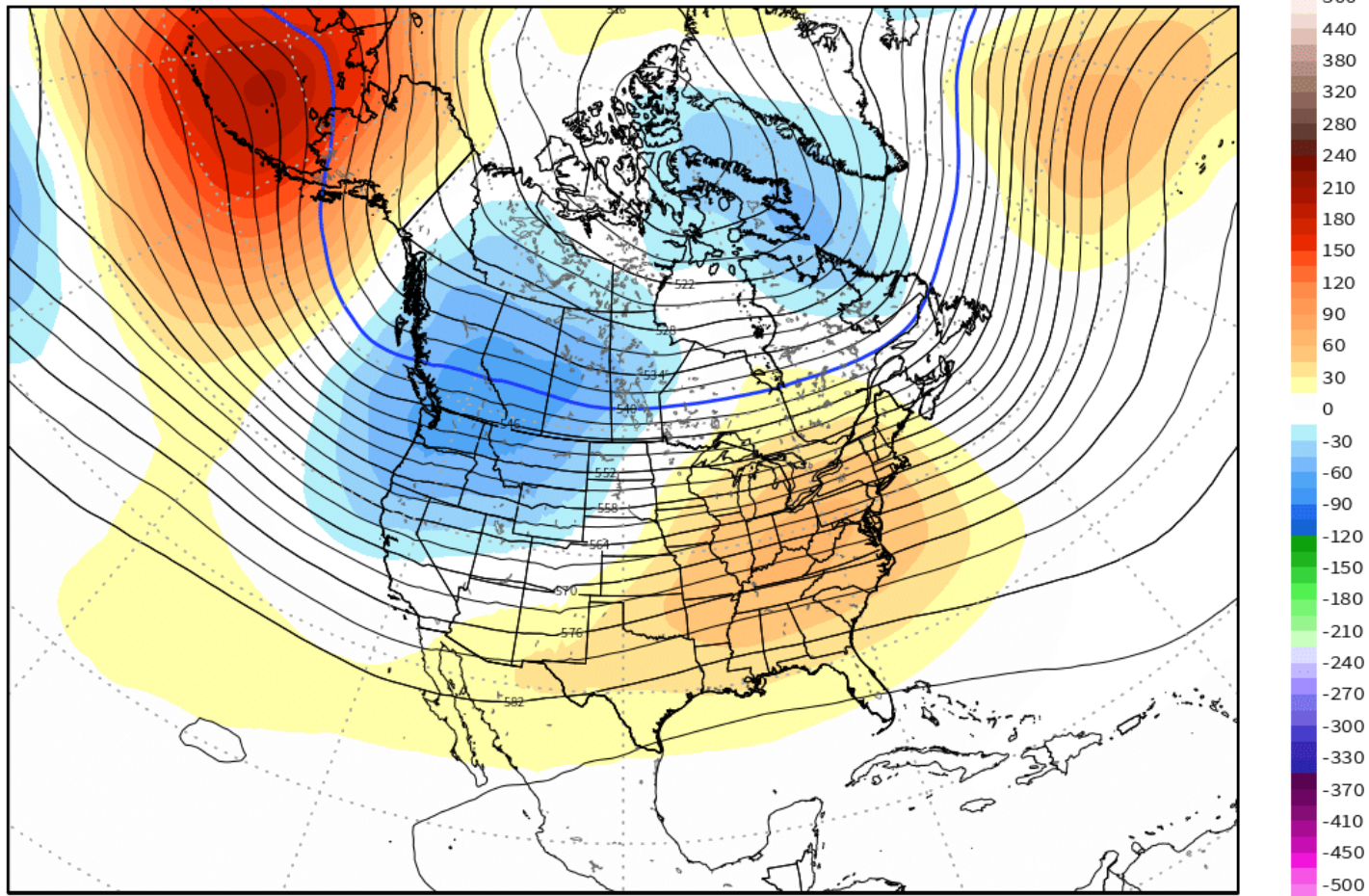


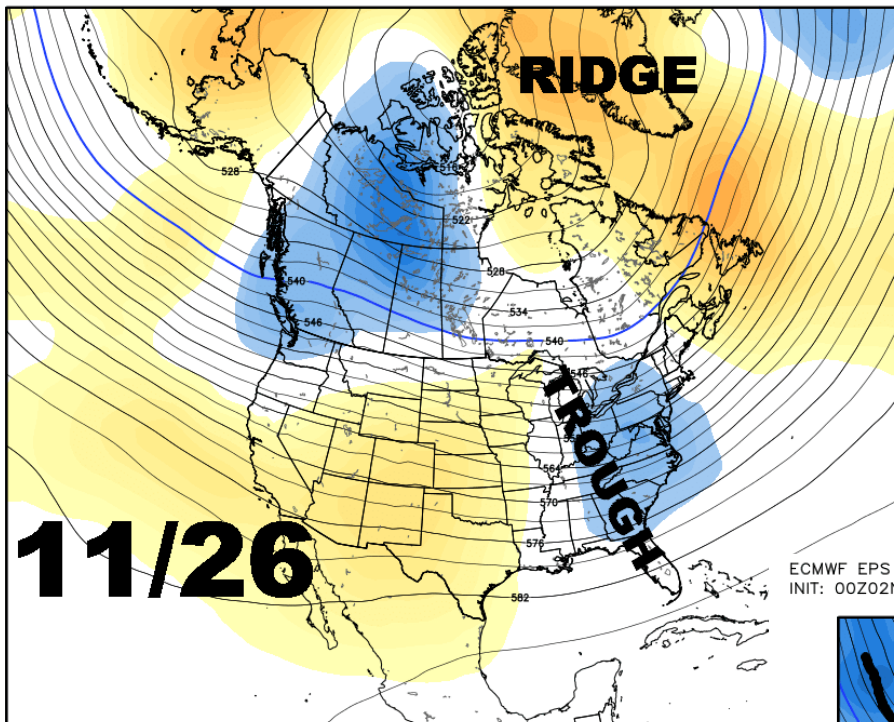
DAY 15 JET STREAM 500mb PATTERN

-not much changes. Big ridge over Alaska & downstream TROUGH over Pac NW/ sw Canada.. RIDGE over southeast US

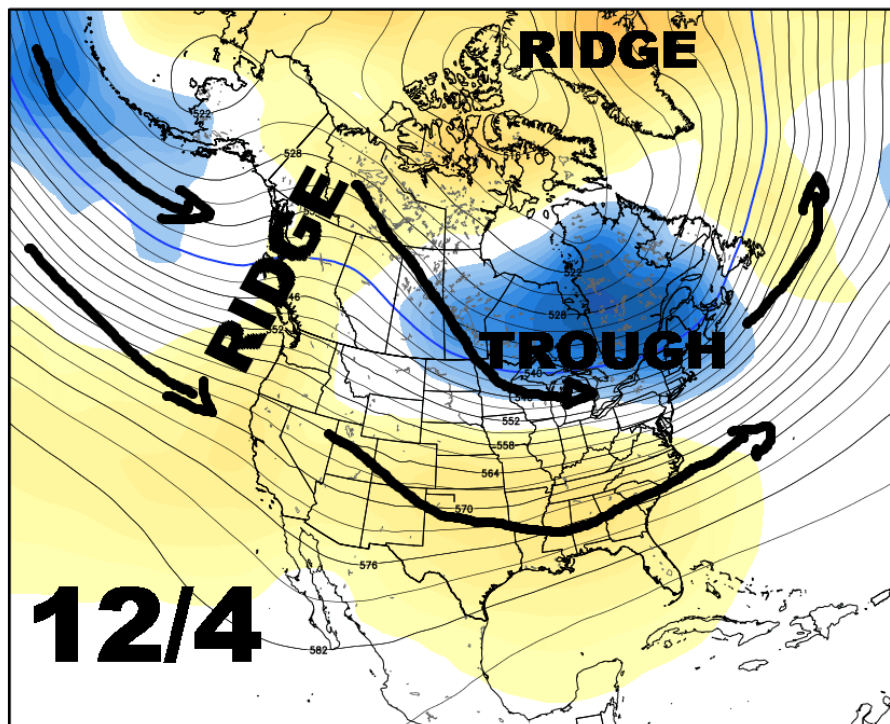
ECMWF EPS 500 hPa Geopotential Height [dm] & Anomaly [m] | Ensemble Mean | 1997-2006 Hindcast M-Climate
Init: 00Z03NOV2017 -- [360] hr --> Valid Sat 00Z18NOV2017

MIN|MAX: -67.8 | 197.3 m





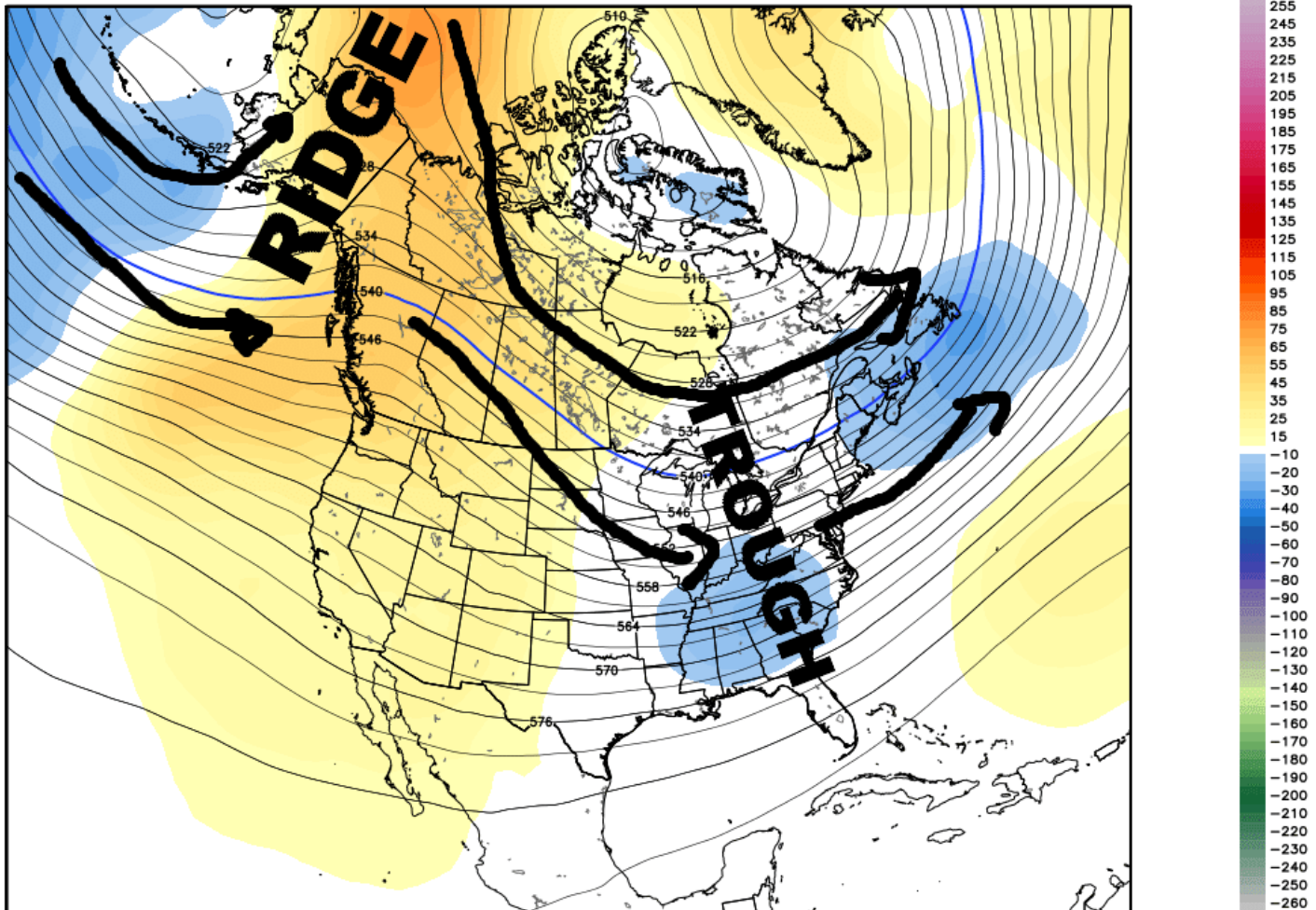
ECMWF EPS Monthly Ensemble Mean 500 hPa Geopotential Height [dm] & Anomaly [m]
INIT: 00Z02NOV2017 fx: [792] hr --> Tue 00Z05DEC2017



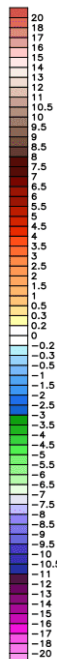
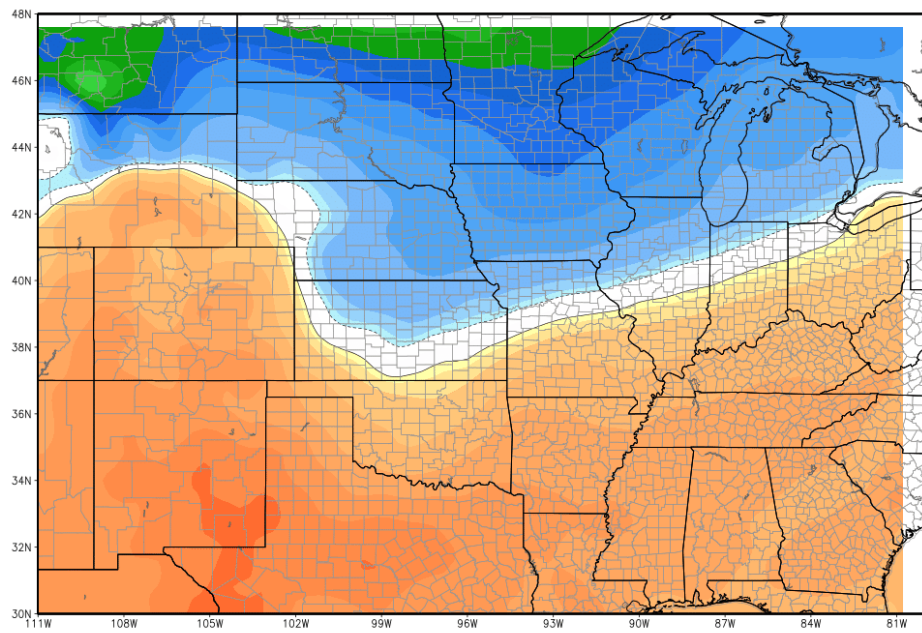
11/3 EURO WEEKLIES 500 mb map valid 12/13

ECMWF EPS Monthly Ensemble Mean 500 hPa Geopotential Height [dm] & Anomaly [m]
INIT: 00Z02NOV2017 fx: [1008] hr --> Thu 00Z14DEC2017

Min|Max: -35.2 | 77.9 m



NOV 3 NEXT 30 DAYS TEMP ANOMALIES EURO WEEKLIES

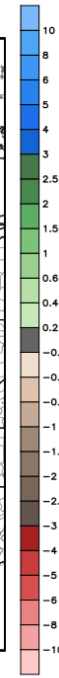
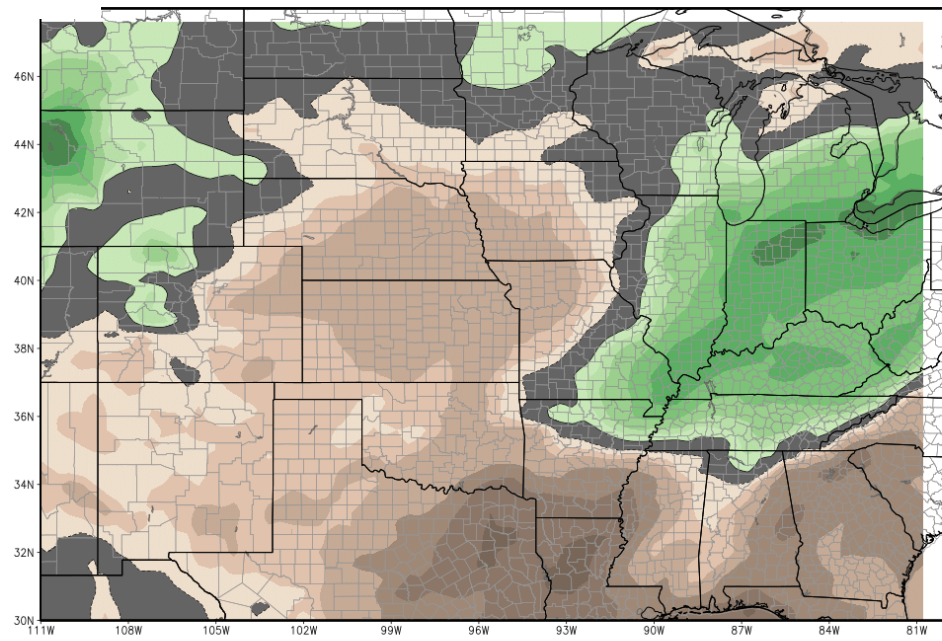


>S Ensemble Mean 32-day Avg Precipitation Anomaly [inch]
Init: 02NOV2017 -- [768] hr --> Valid on Mon 00Z04DEC2017 Day 0 - Day 32

Min|Max Anom: -2.2 | 2.5 inch

Average between 00Z02NOV2017-00Z04DEC2017 | ECMWF EPS 1996-2015 Hindcast Climatology

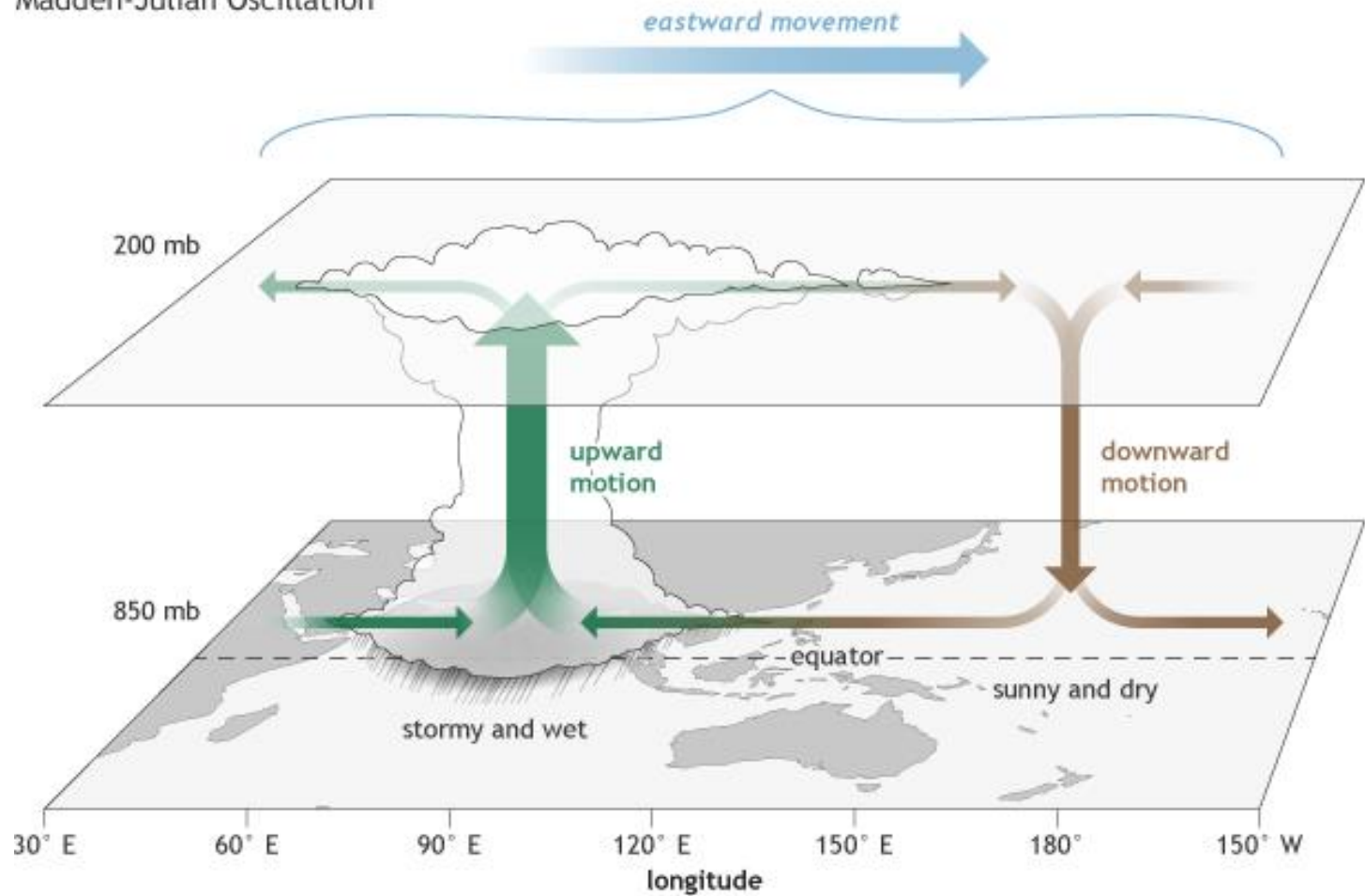
NOV 3 .. EURO WEEKLIES next 30 day PRECIP ANOMALIES



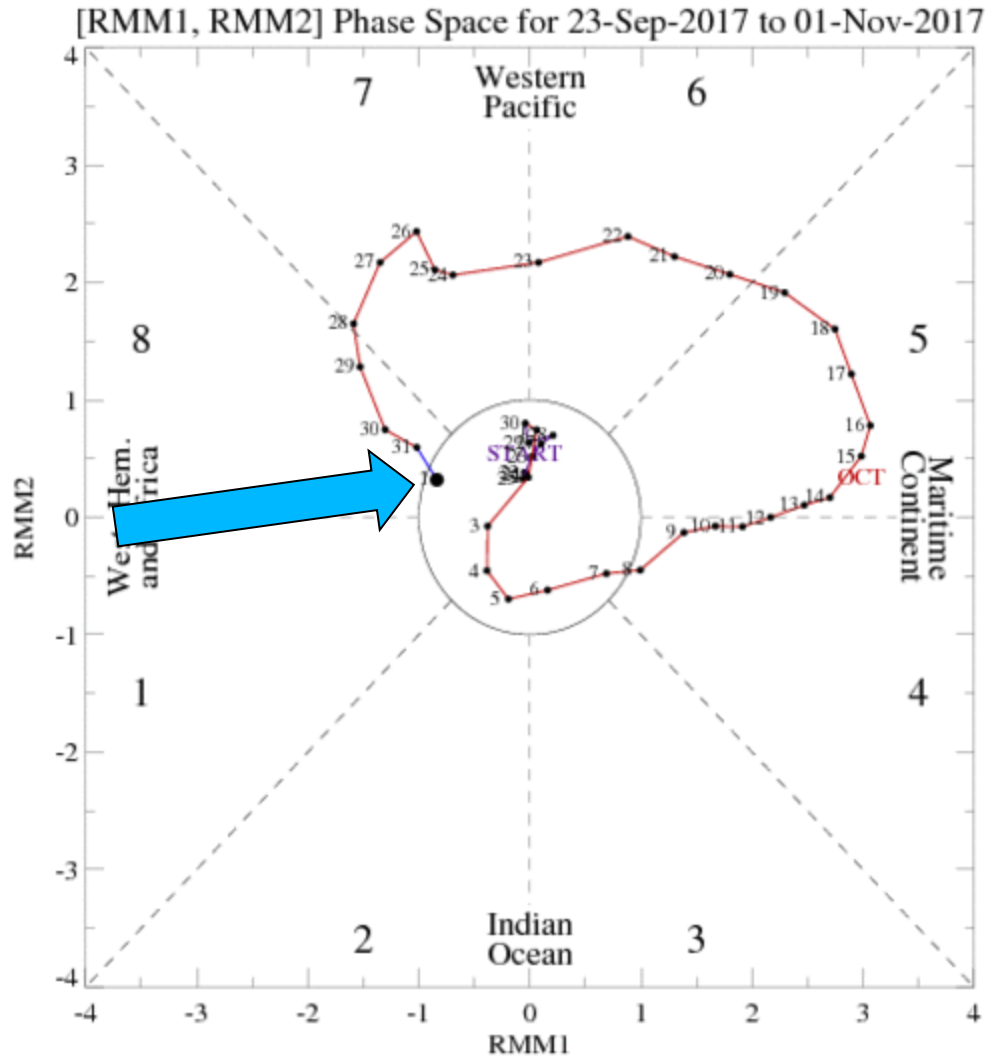
Accumulation between 00Z02NOV2017-00Z04DEC2017 | ECMWF EPS 1996-2015 Hindcast Climatology

LETS TALK MJO/ENSO

Madden-Julian Oscillation

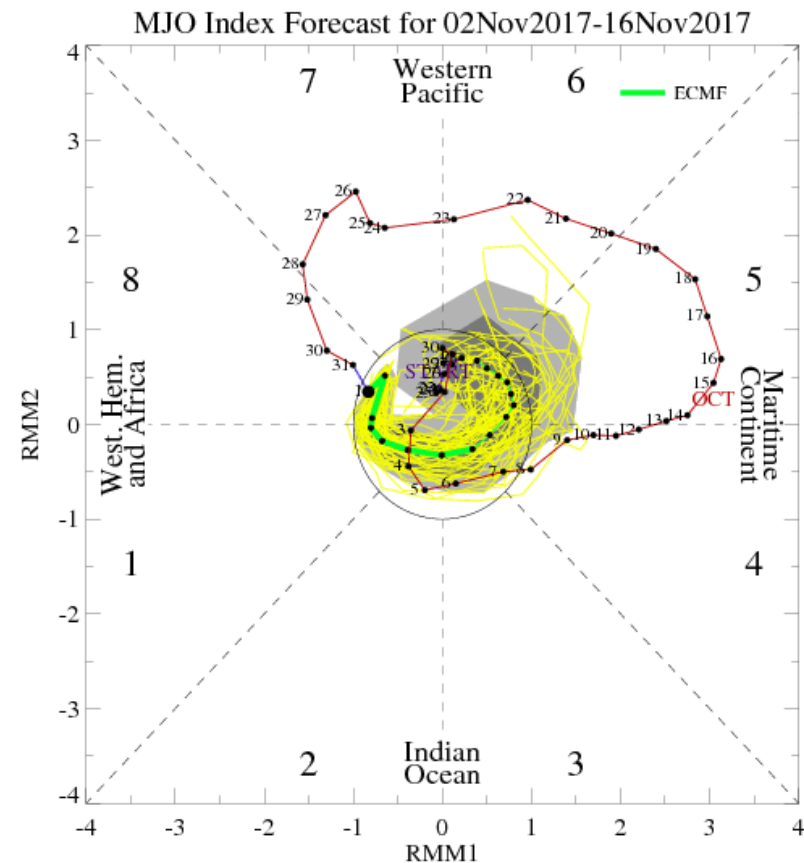
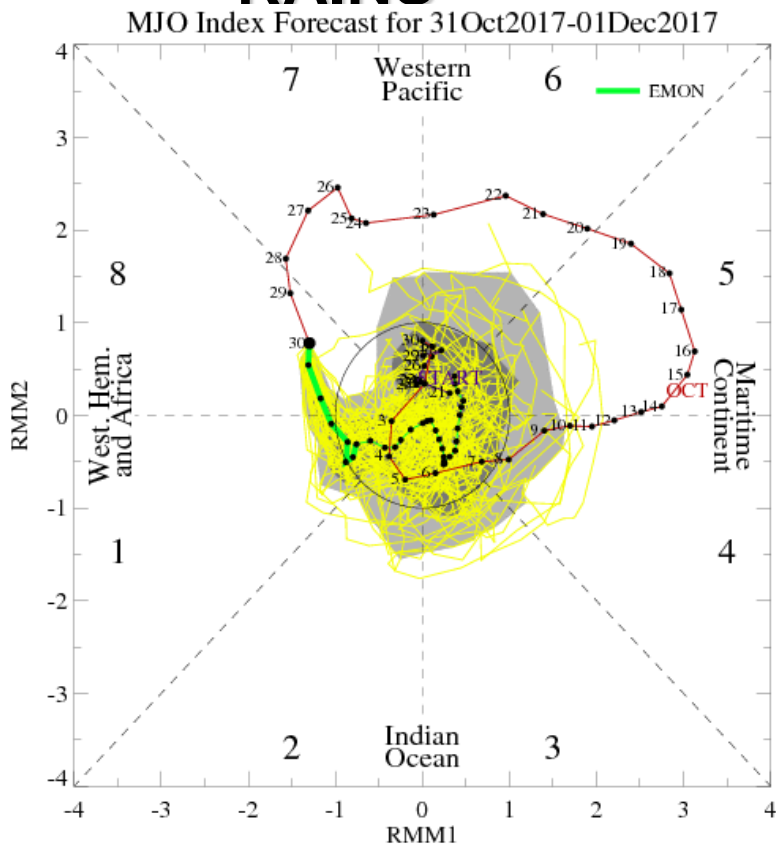


MJO IS STRONG

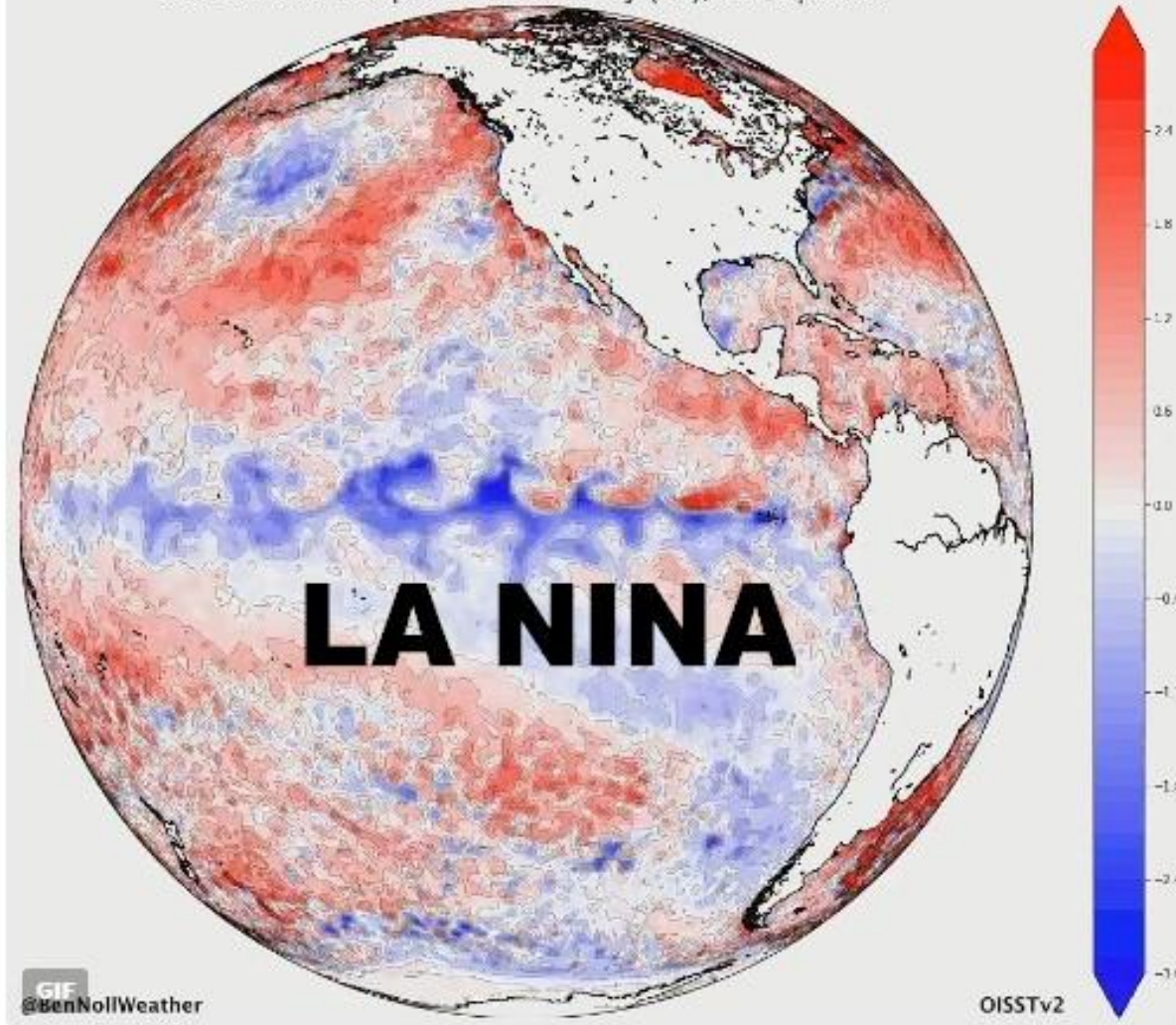


MJO HAS DIED... AND HAS MOVED INTO NEUTRAL CIRCLE ... AND STAYS IN CIRCLE REST OF THE MONTH

SIGNIFICANT IMPLICATIONS FOR S.AMERICAN/ BRAZIL MUCH NEED RAINS



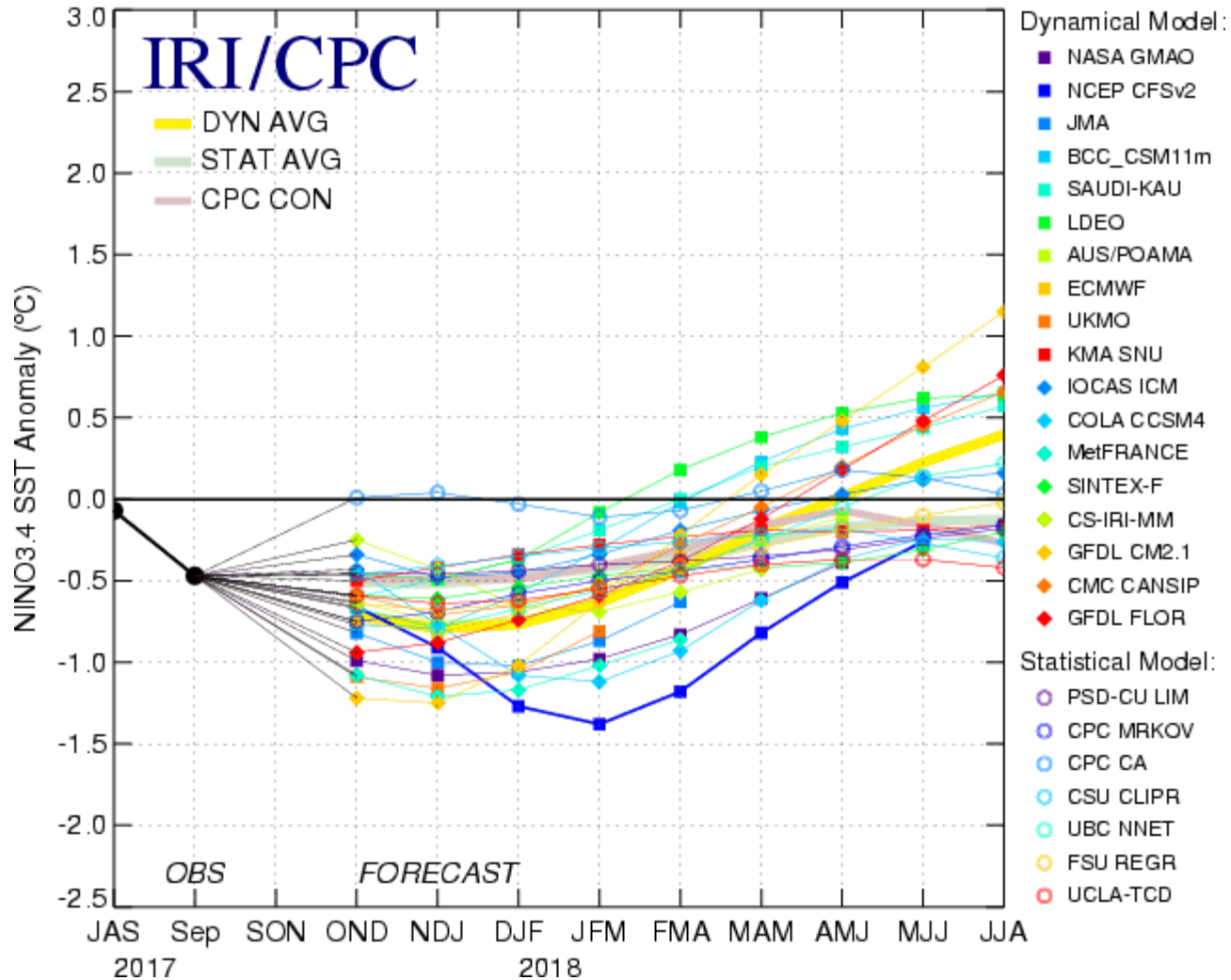
Sea Surface Temperature Anomaly (°C), 10 Sep 2017



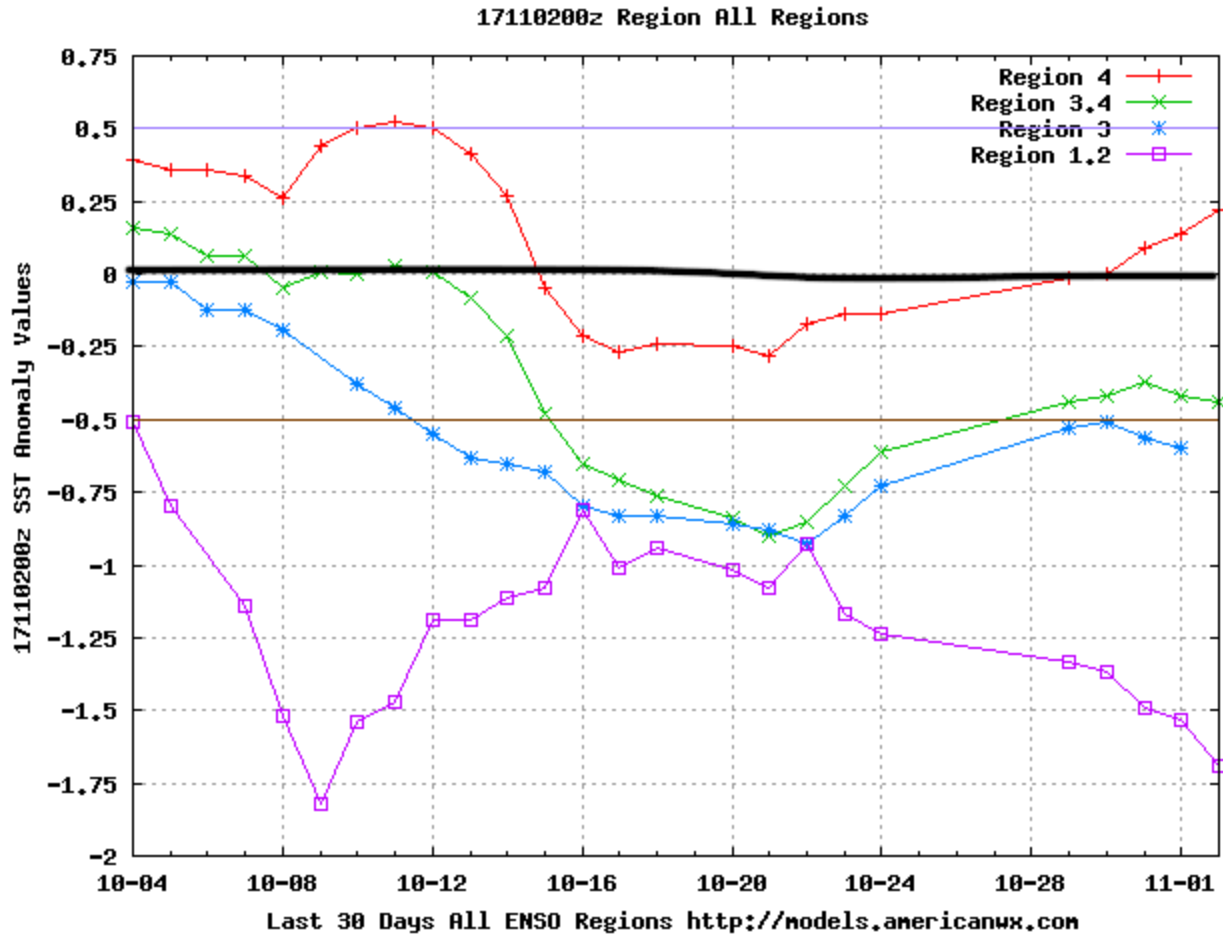
6:29 AM - 13 Sep 2017

ALL CLIMATE MODELS -- again CFS MODEL PROJECTION COLDER STRONGER LA NINA THAN ANY OTHER MODEL

Mid-Oct 2017 Plume of Model ENSO Predictions

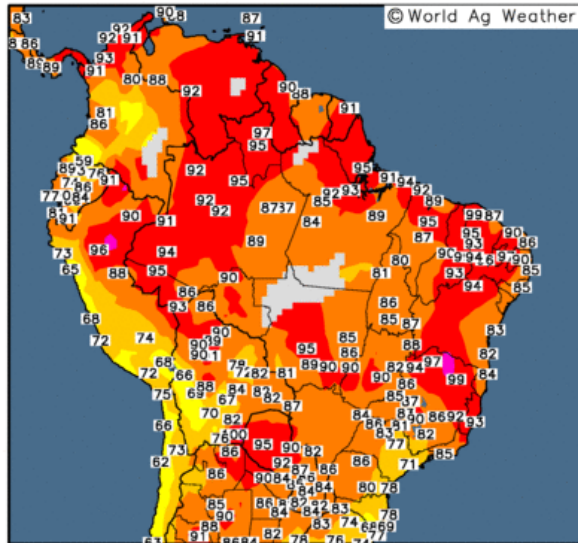


ACTUAL SEA SURFACE TEMP ANOMALIES – not projection .. Large area of cold water surface and sub surface



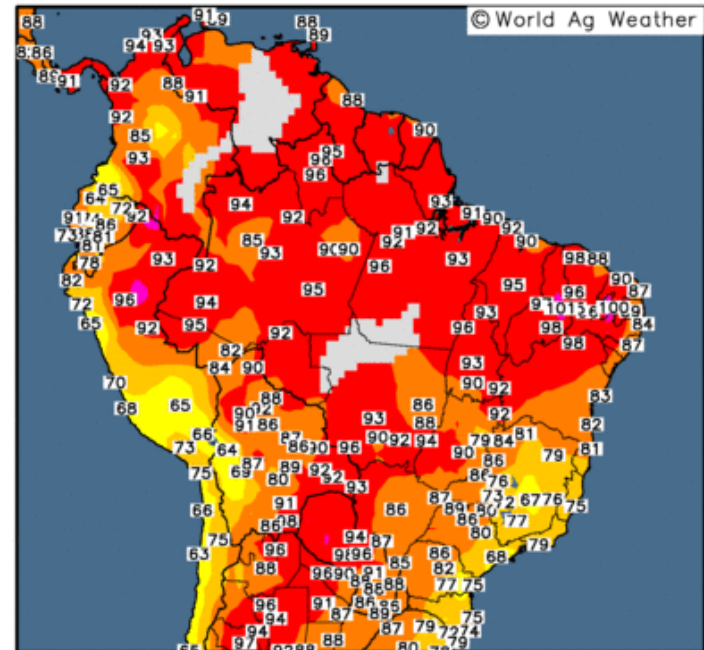
HEAT WAVE IN BRAZIL Diminish

Observed Maximum Temperature (°F)
31 Oct 2017



Map updates daily by approximately 16:00 UTC

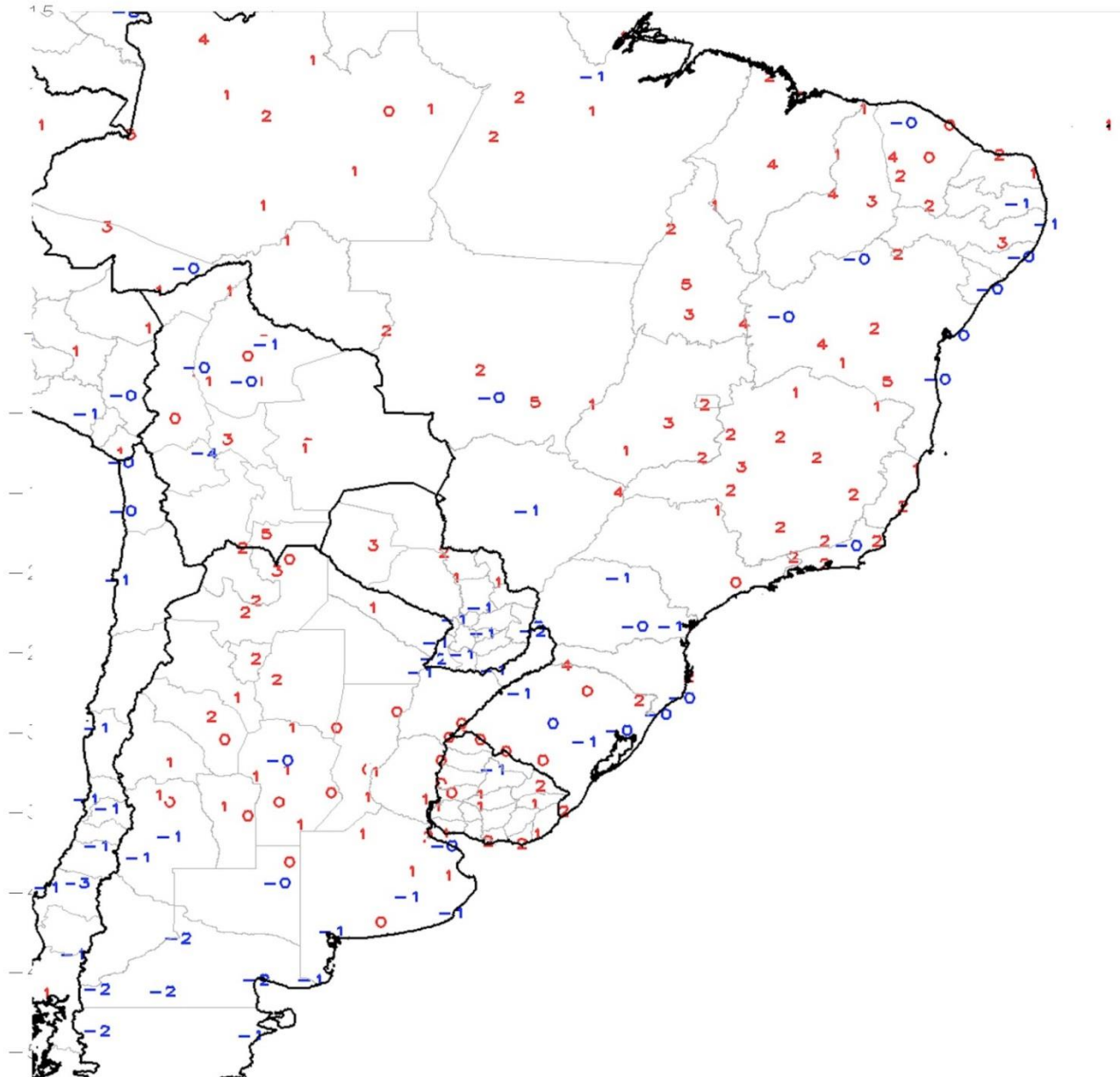
Observed Maximum Temperature (°F)
1 Nov 2017



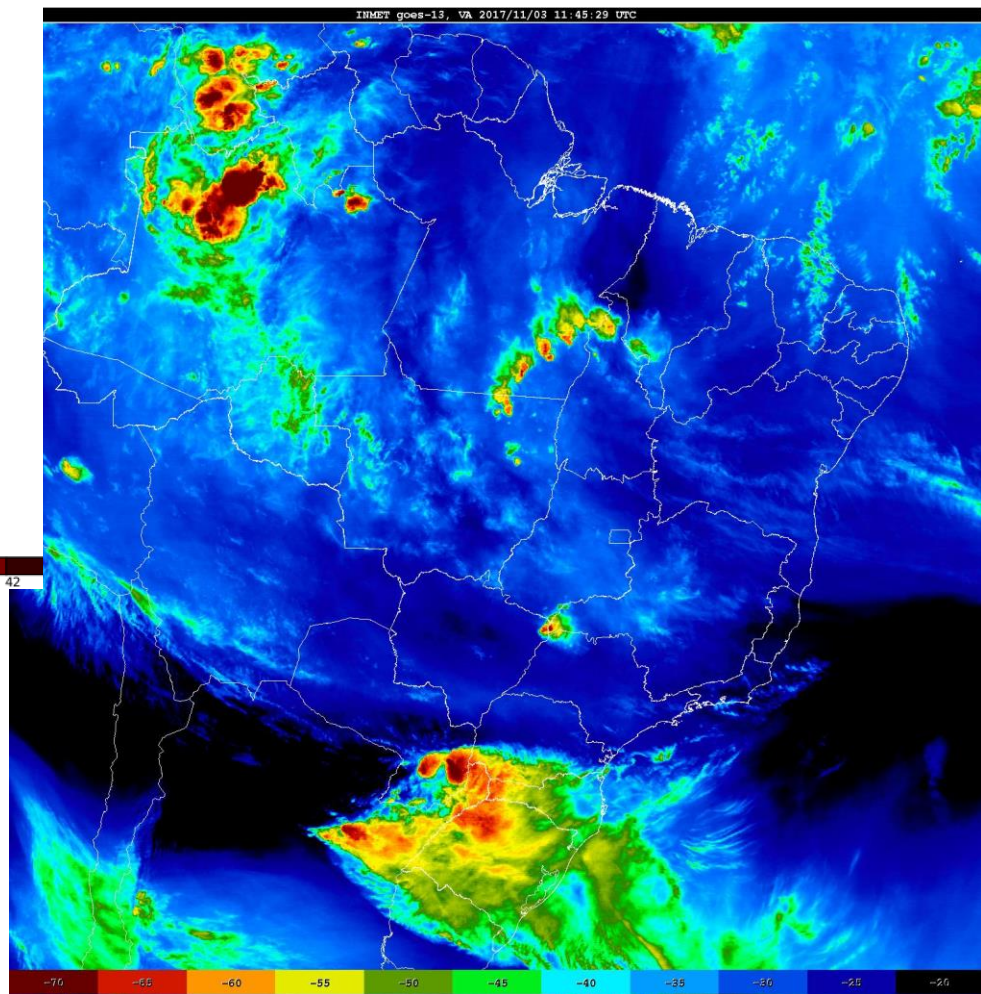
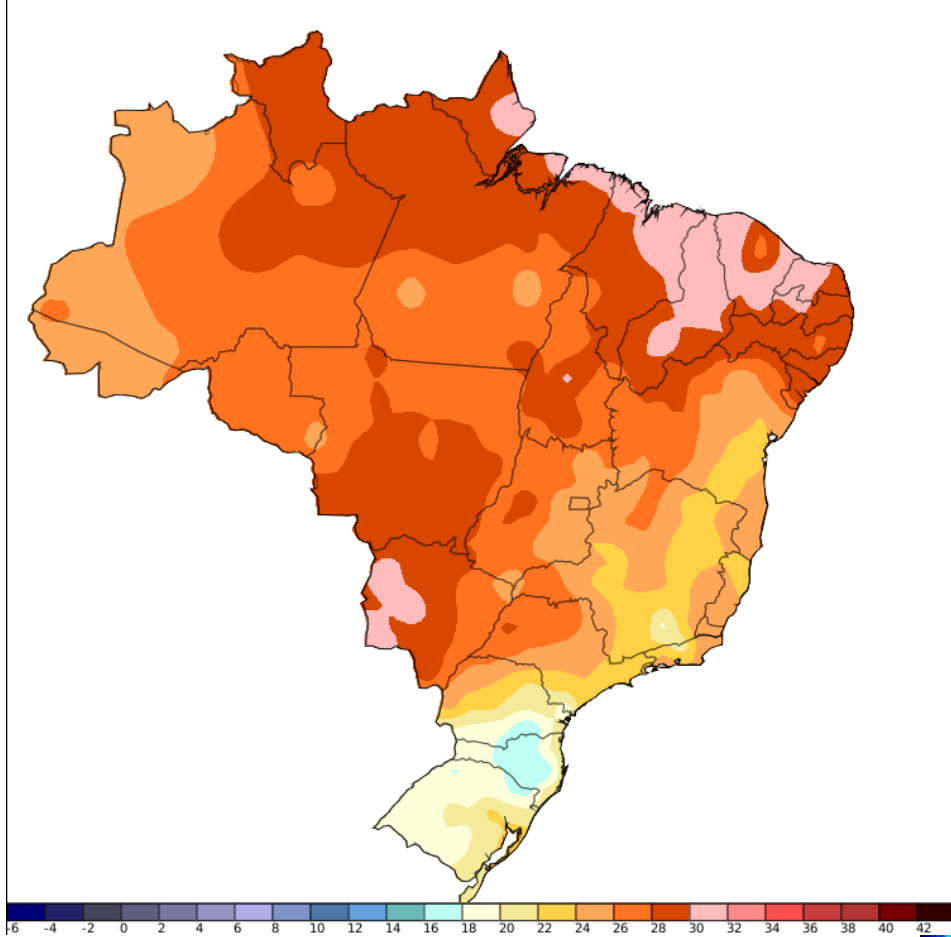
Map updates daily by approximately 16:00 UTC

GTS Station Running 7-Day Average Temperature Anomaly (C)

Period: 26Oct2017 – 01Nov2017



MAX TEMPS NOV 2- SEASONAL TEMPS



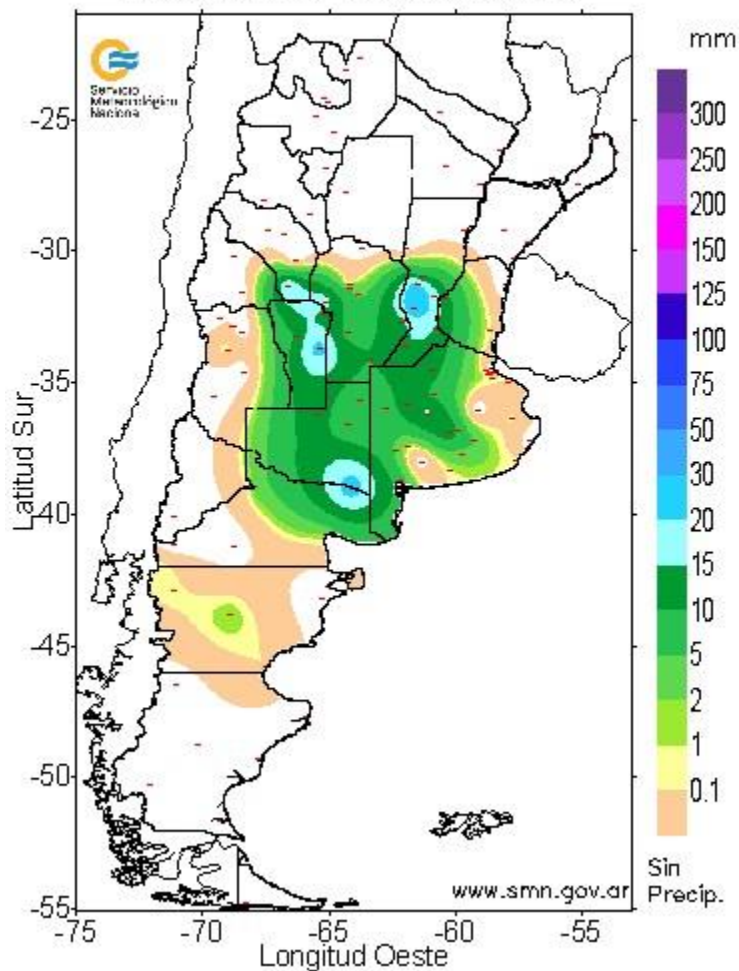
**BIG storms over ne
Corrientes RGDS Santa
Catarina southern
Parana**

PRECIP 11-2-17- ending midnight

Servicio Meteorológico Nacional

PRECIPITACION (EN MILIMETROS) ACUMULADA EN 24 HORAS

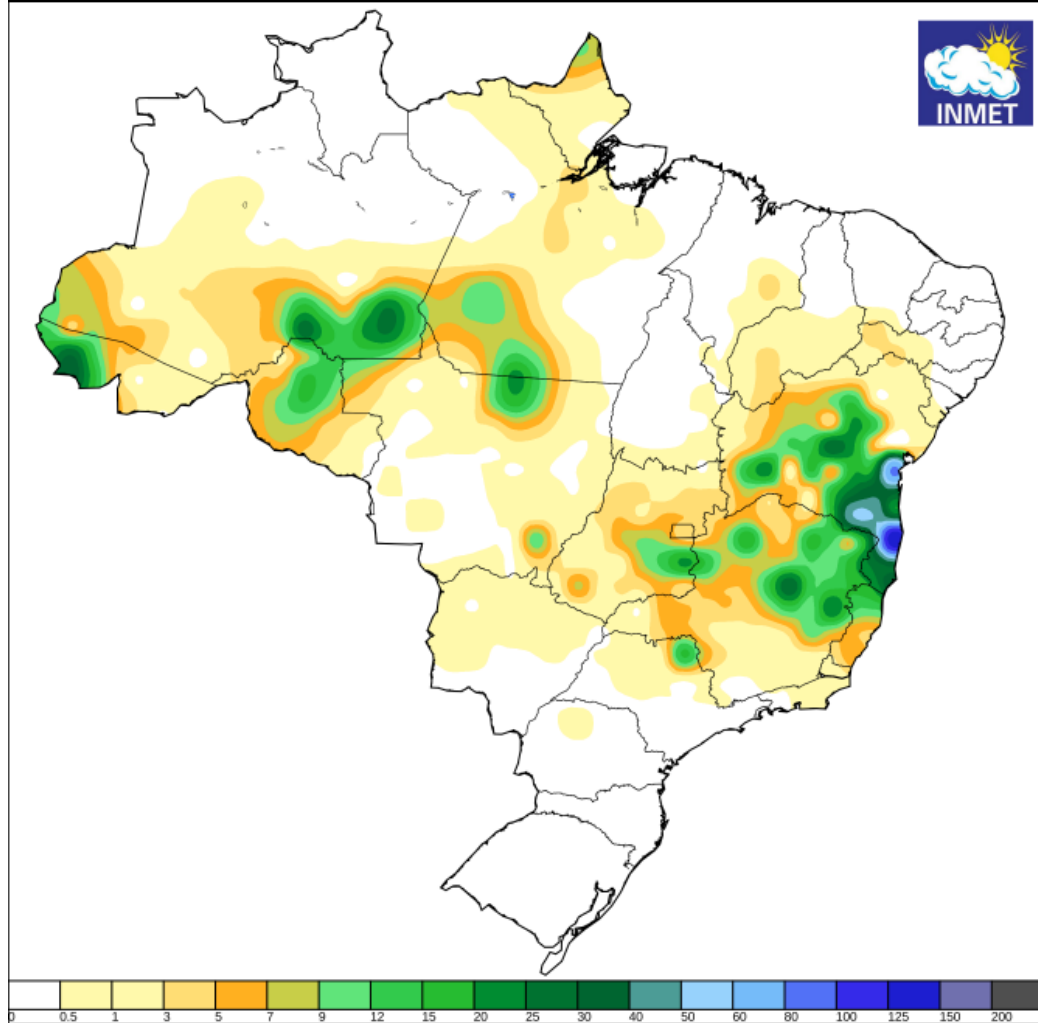
Los valores corresponden al periodo comprendido entre las
9 hs. del 01 / 11 / 2017 y las 9 hs. del 02 / 11 / 2017



Instituto Nacional de Meteorologia - INMET

Precipitação Acumulada em 24 horas

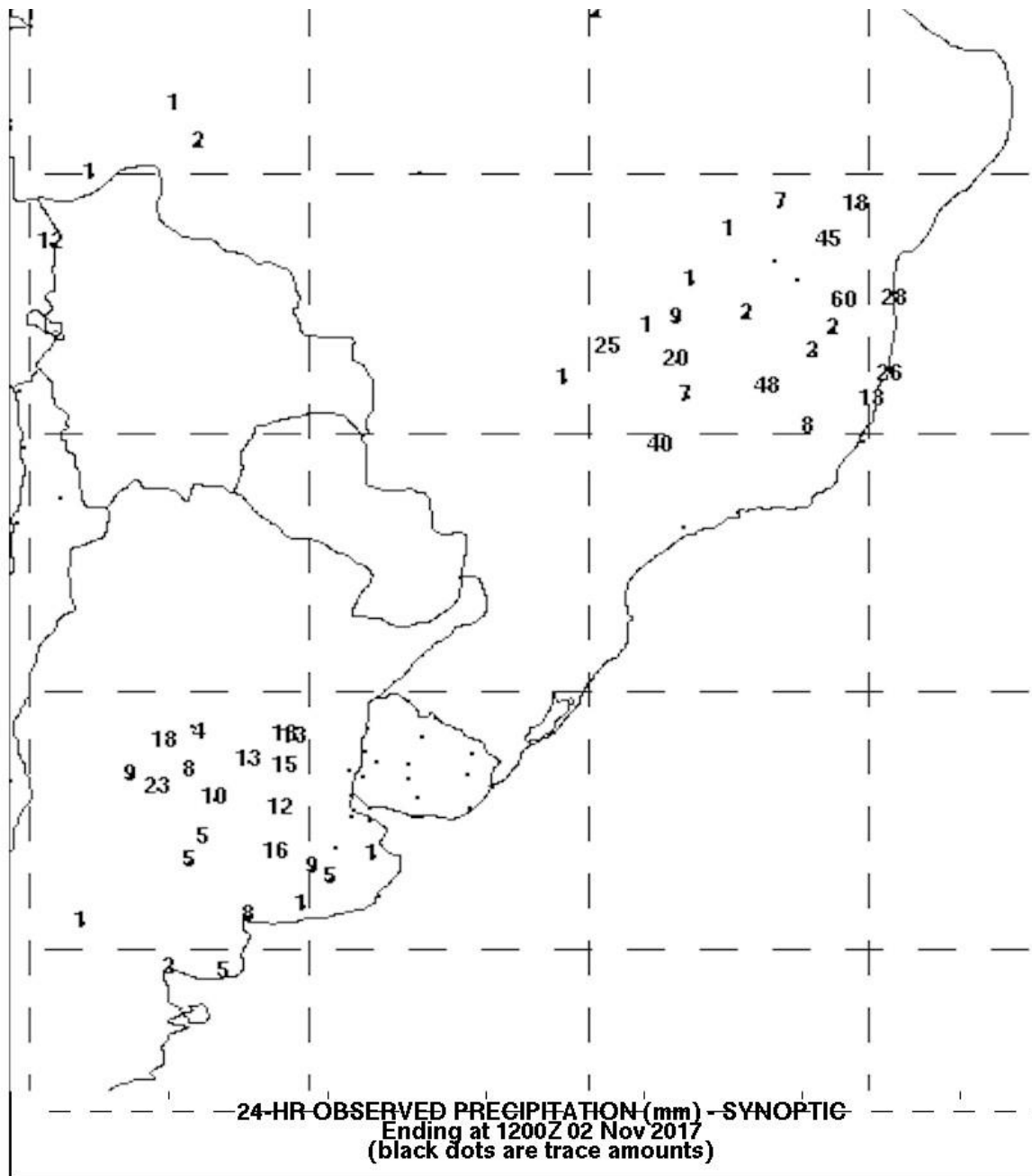
Mapa do dia 02/11/2017



PRECIP NOV 1-2

**2 areas – 5-25m/ 0.25-1.0” over Cordoba
Santa Fe western
Buenos Aires 60-70%
coverage.**

**5-60mm/ 0.25-2.5”
50% coverage north
Minas Gerais south
Bahia southern
Goias**



ACTUAL OCTOBER RAINFALL

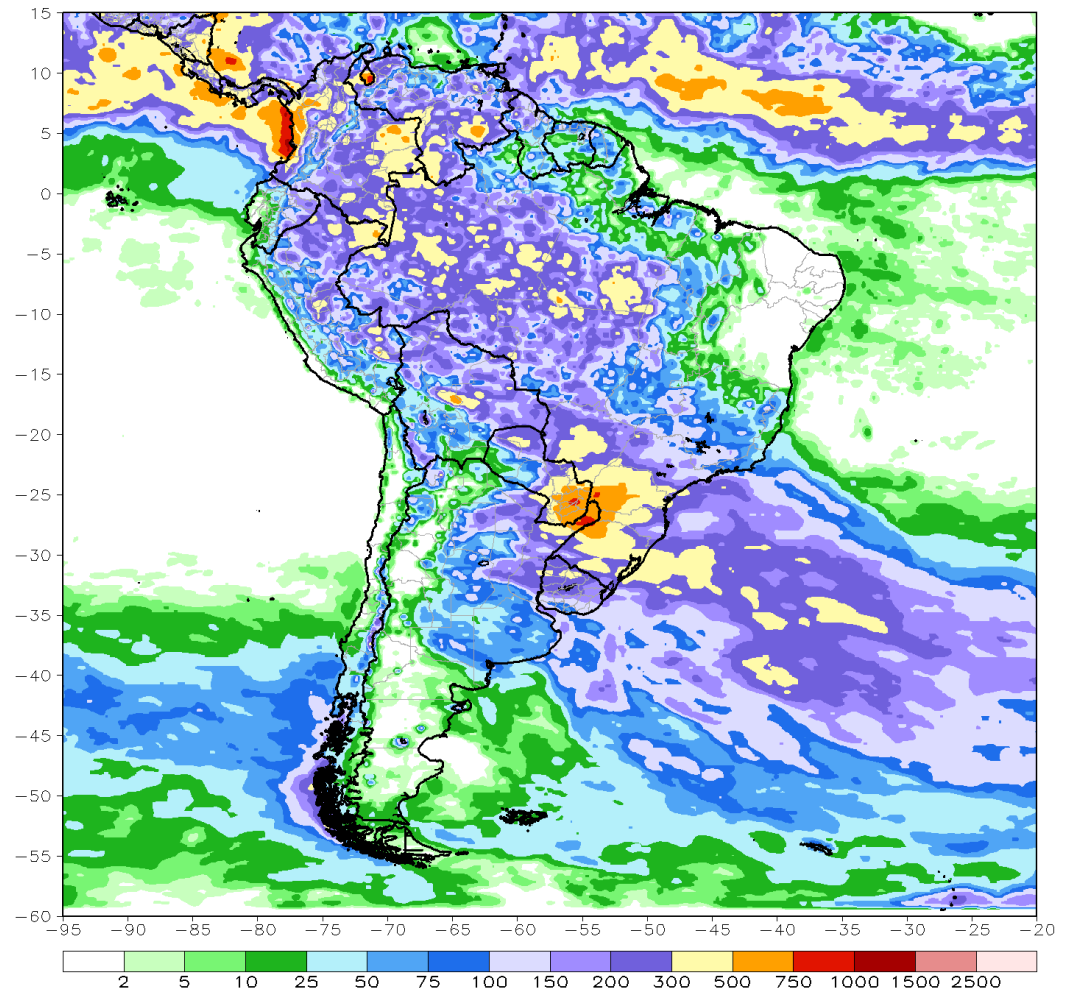
**500mm / 20'' over se
Paraguay western
Parana/ Santa Catarina
west RGDS & ne trip
of Corrientes.**

**Central ARG =50-
100mm/ 2-4''**

**Mato Grosso Goias
MGDS Tocantins Sao
Paulo 150-400mm/ 6-8''**

CMORPH 1-Month Total Rainfall (mm)

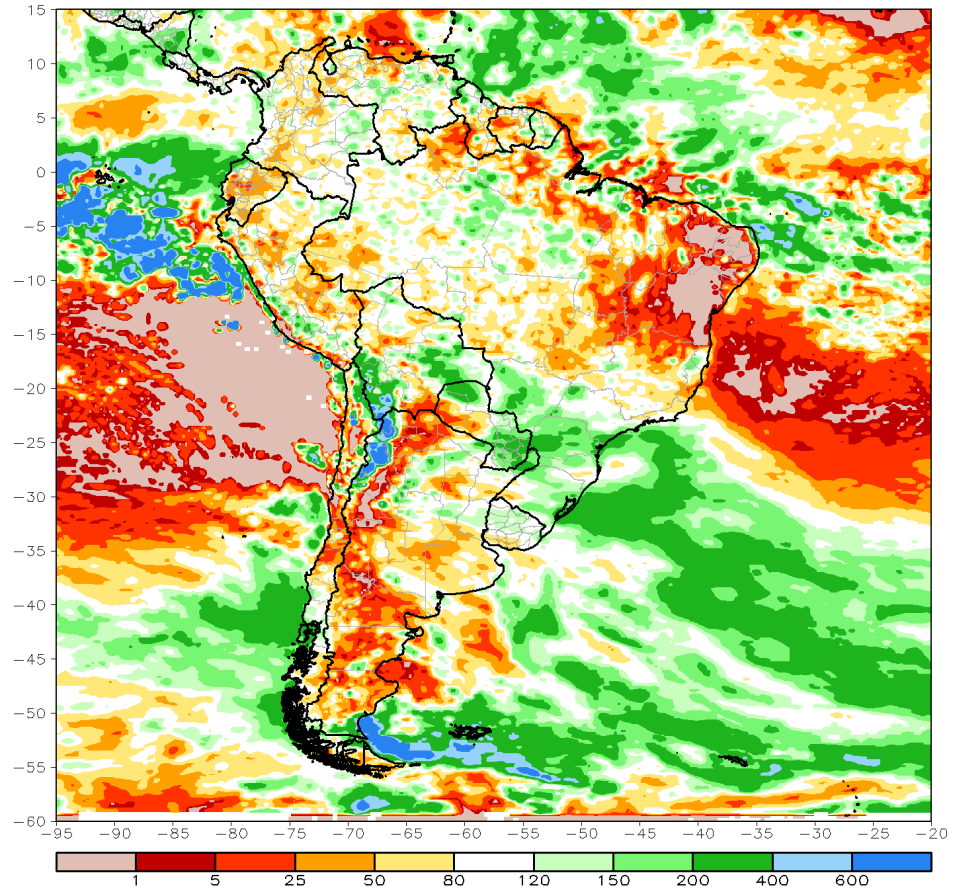
Period: 01Oct2017 - 31Oct2017



OCTOBER RAINFALL ANOMALIES

**Still dry over western/
central Brazil and
over central / eastern
ARG -- VERY dry
Bahia. Above Normal
rains eastern Parg
MGDS all of se Brazil**

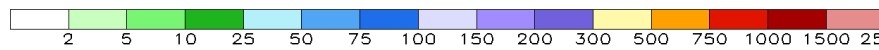
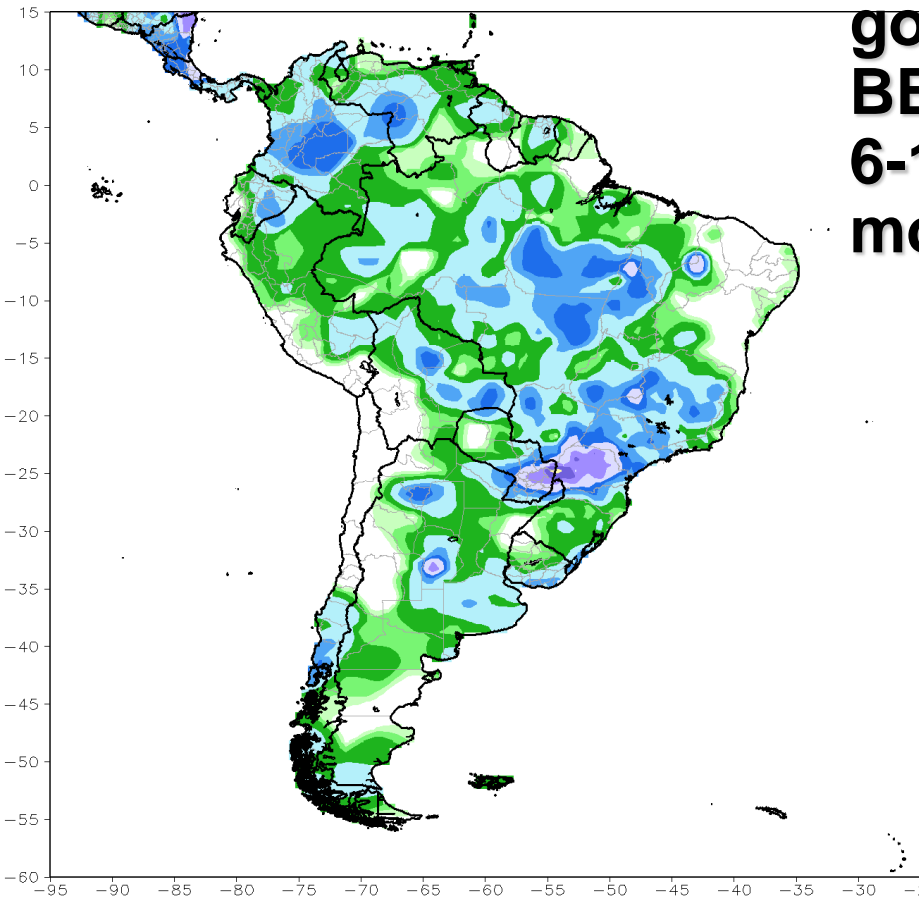
CMORPH 1-Month Percent of Normal Rainfall (%)
Period: 01Oct2017 - 31Oct2017



CPC Unified Gauge 7-Day Total Rainfall (mm)

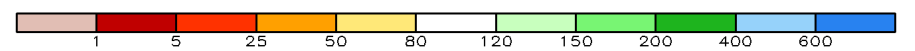
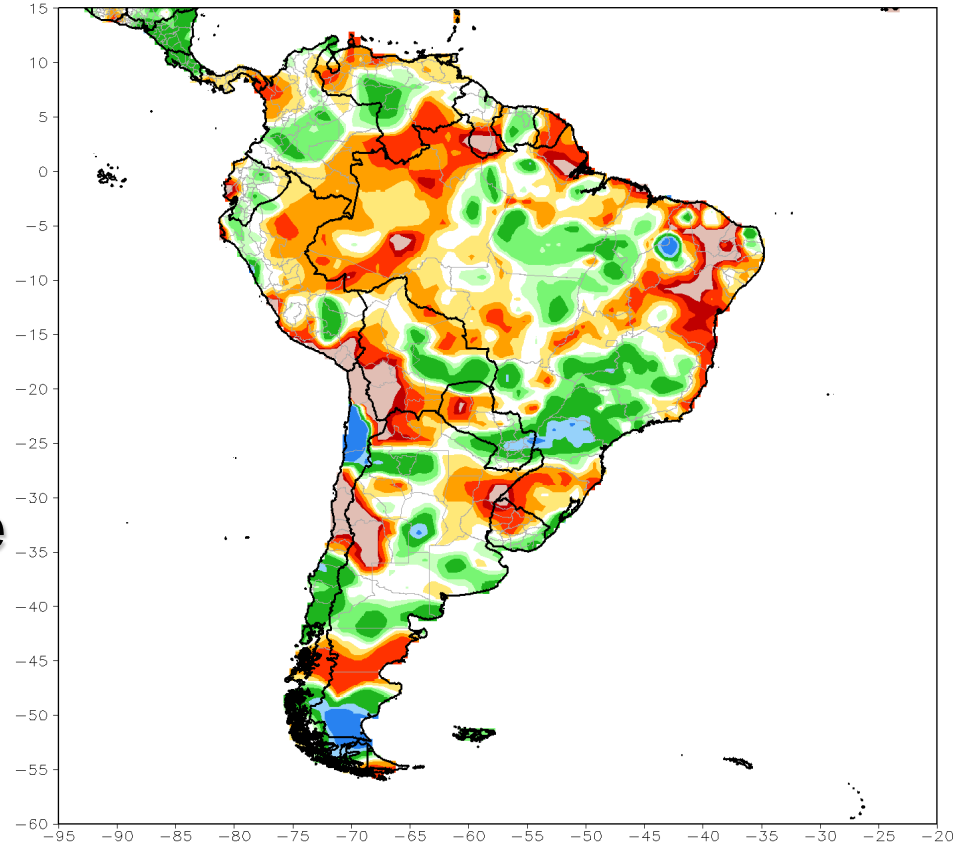
Period: 26Oct2017 - 01Nov2017

**RAINFALL PAST 7 D -
good rains in all areas
BEST rains 150-300mm/
6-12" East Parg into
most fo Parana**



CPC Unified Gauge 7-Day Percent of Normal Rainfall (%)

Period: 26Oct2017 - 01Nov2017



**BELOW NORMAL over se
Brazil east central ARG
ABOVE & MUCH ABOVE
Normal much of Brazil**

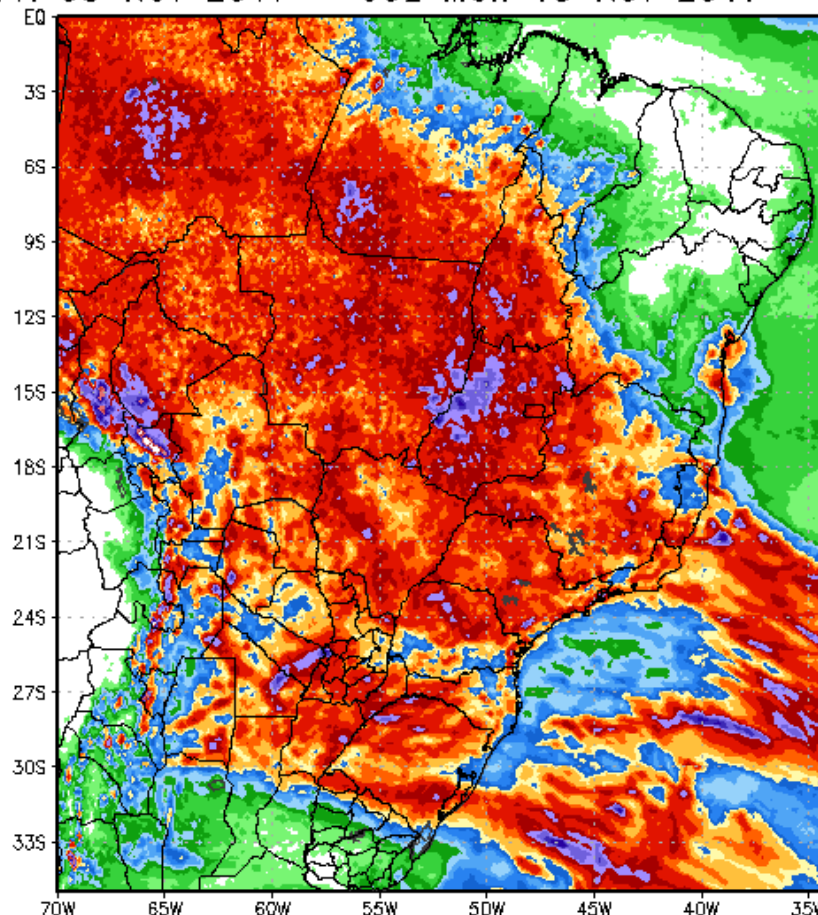
EURO TOTAL RAINFALL DAY 10- widespread 2-4"/50-100mm CORE of 5-7"/ 125-175mm over Goias & small blobs of 5" rains over all areas... even into North ARG ... DRY over central ARG

240 Hour Total Precipitation (in)

Valid: 00z Fri 03 Nov 2017 - 00z Mon 13 Nov 2017

ECMWF-MAXRES

Hour: 0 - 240



Max: 14.9 in
Min: 0.0 in

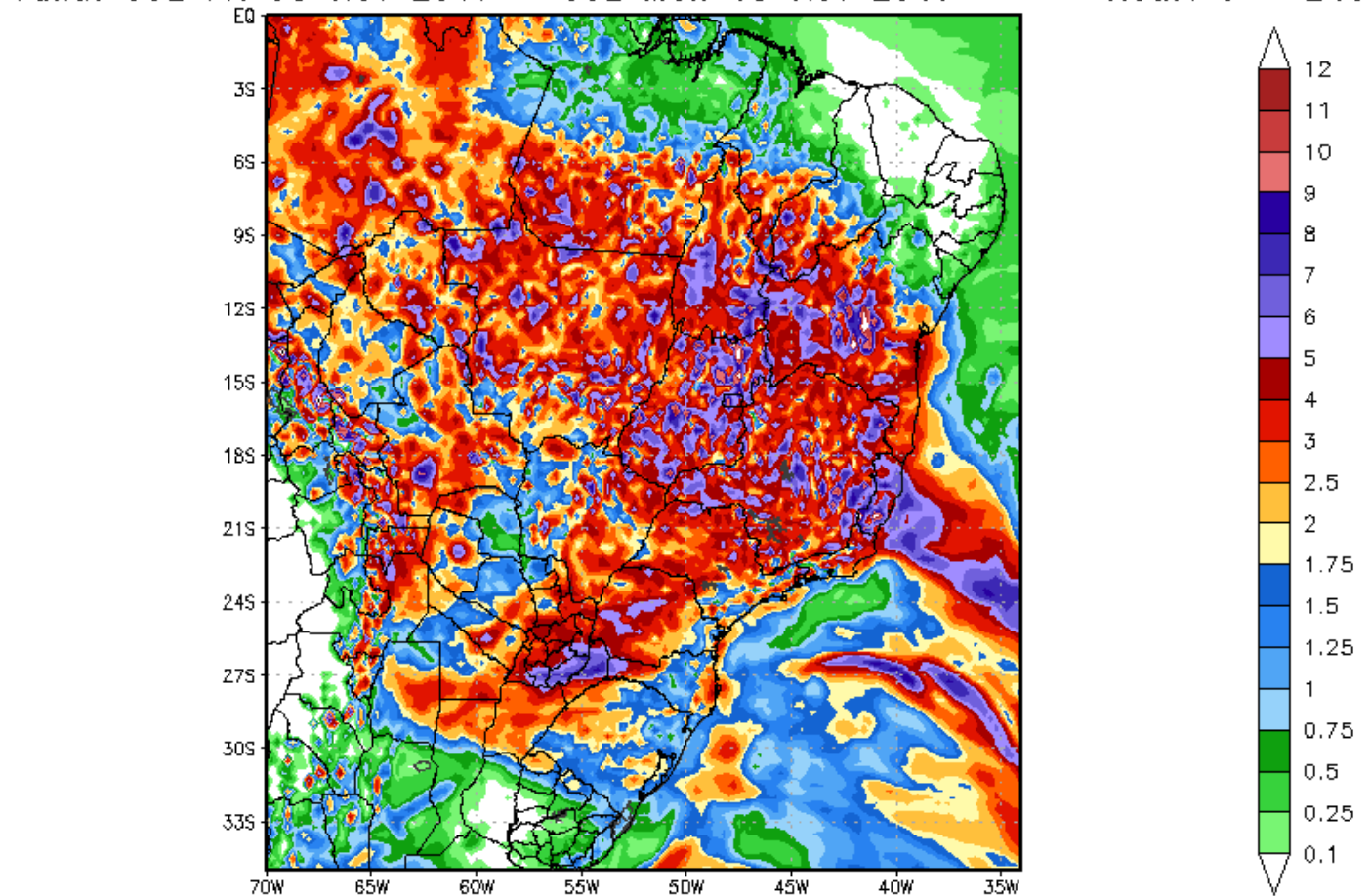
StormVistaWxModels.com

Init: 00z Fri 03 Nov 2017
2017-11-03-06:55

GFS TOTAL RAINFALL DAY 10- much heavier rain all !! Again this is what I mean when I tell you the GFS has wet bias. This is **WAAAAAY** over done - because so many rely on **GS** they **OVER** forecast the rains

240 Hour Total Precipitation (in)
Valid: 00z Fri 03 Nov 2017 - 00z Mon 13 Nov 2017

GFS-MAXRES
Hour: 0 - 240



Max: 19.0 in
Min: 0.0 in

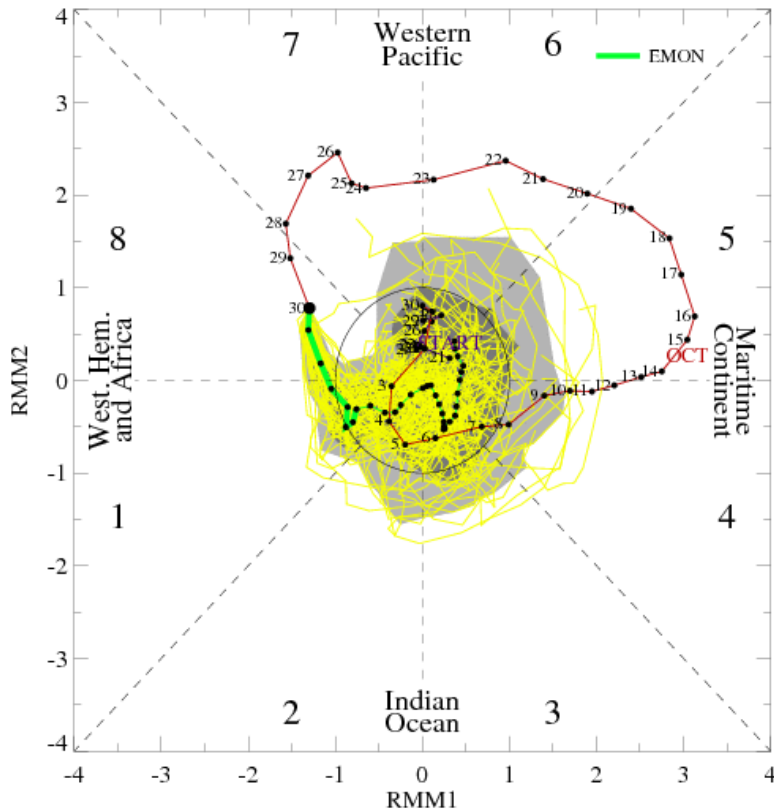
StormVistaWxModels.com

Init: 00z Fri 03 Nov 2017
2017-11-03-04:42

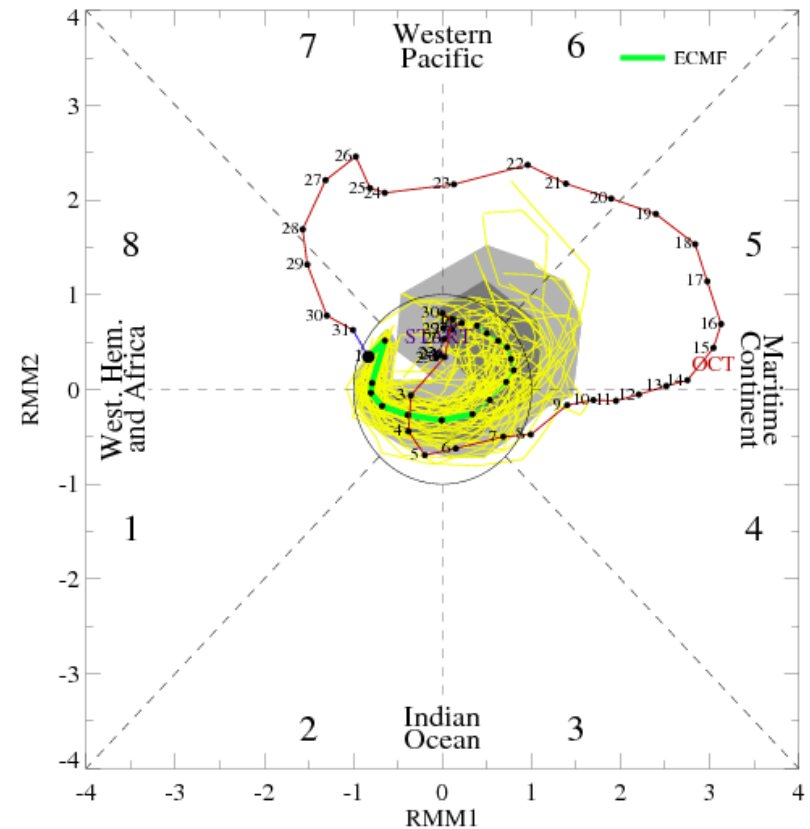
The COLLAPSE OF CURRENT MJO back into the NEUTRAL CIRCLE - strongly implies S.AMERICA will not see wet MJO phases 1-2 .. The “window” for wet Brazil comes to and end by NOV 9-10.

The RISK of western/ central/ east central Brazil going back HOT & DT for Mid/late NOV has

MJO Index Forecast for 31Oct2017-01Dec2017



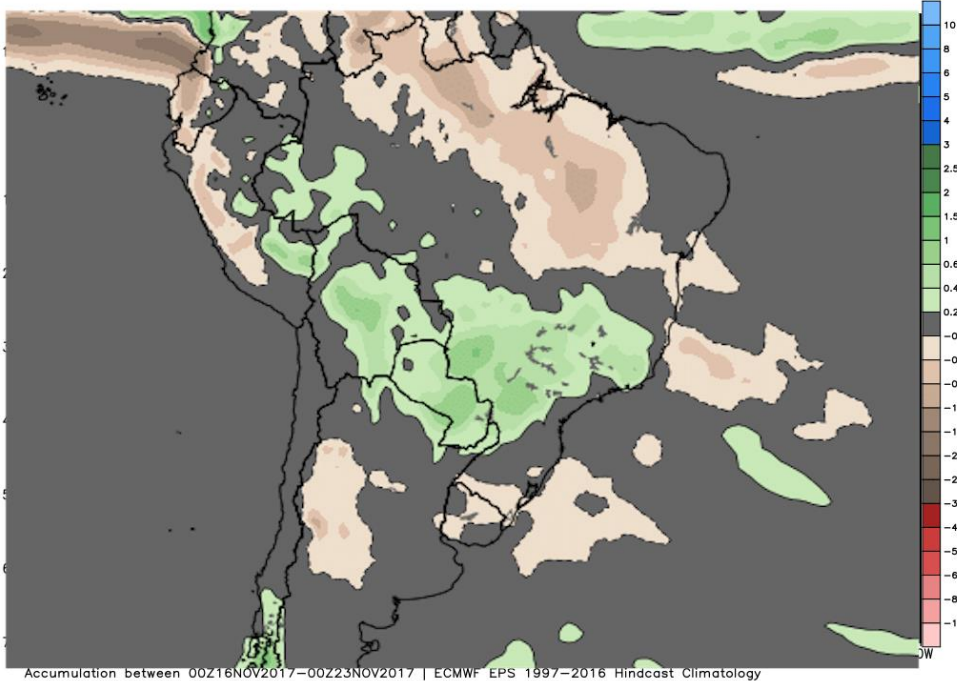
MJO Index Forecast for 02Nov2017-16Nov2017



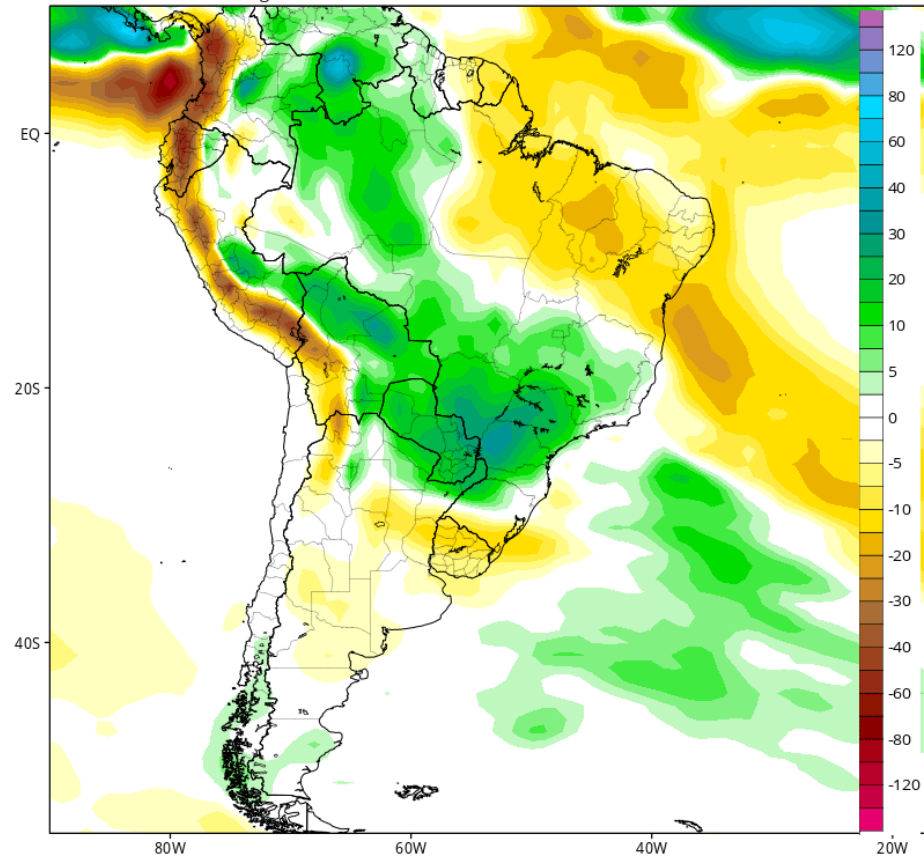
LATEST CFS Model for WEEK 3 - 11/22

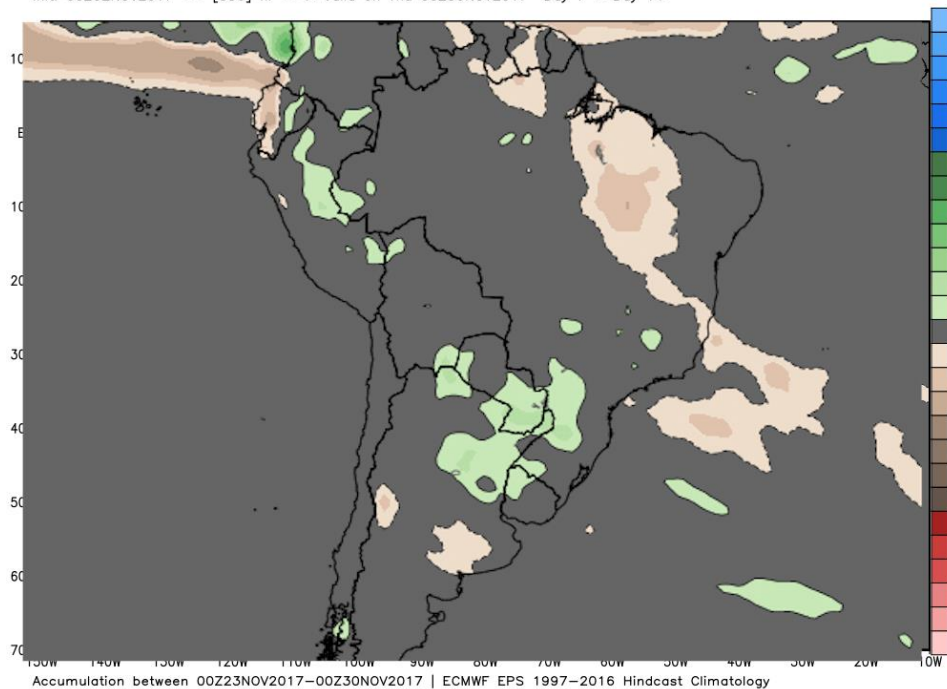
good rains over SW/ SE Brazil only near Normal over central Brazil

ECMWF EPS Ensemble Mean 7-day Avg Precipitation Anomaly [inch]
Init: 00Z02NOV2017 -- [252] hr --> Valid on Thu 00Z23NOV2017 Day 3.5 - Day 10.5



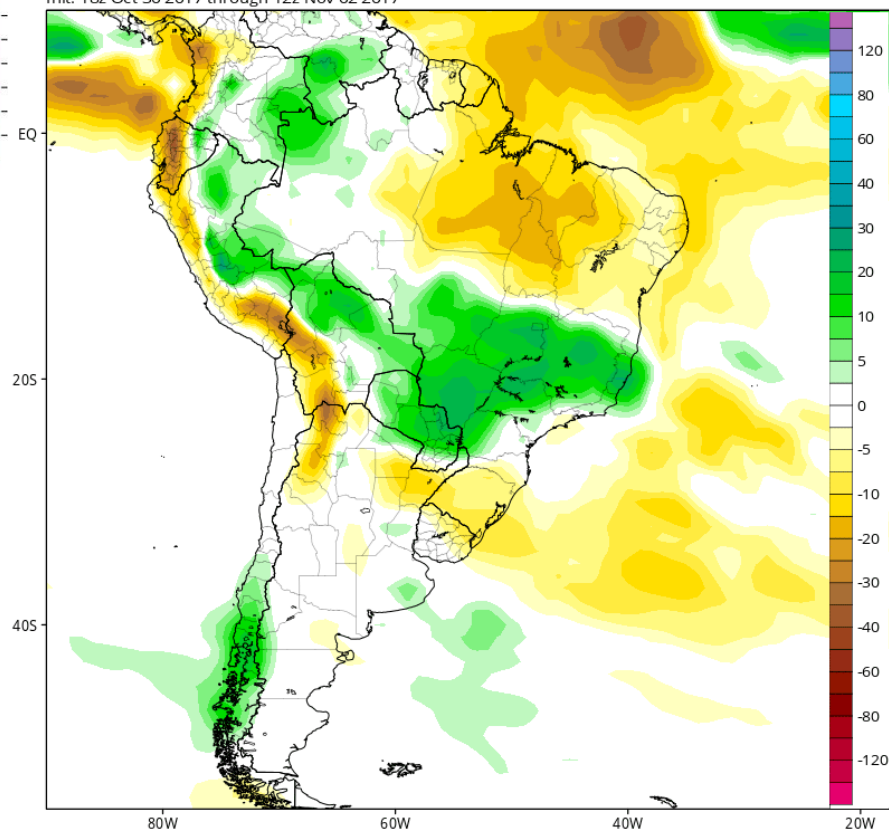
CFSv2 Accumulated Precip. Anomaly (mm) from 12z16Nov2017 to 12z23Nov2017 (Days 15-21)
Average of last 48 forecasts (12 runs x 4 members)
Init: 18z Oct 30 2017 through 12z Nov 02 2017





EURO shows Above Normal rains shift SOUTH back into Parag & se Brazil – west/central Brazil near Normal

CFSv2 Accumulated Precip. Anomaly (mm) from 12z23Nov2017 to 12z30Nov2017 (Days 22-28)
Average of last 48 forecasts (12 runs x 4 members)
Init: 18z Oct 30 2017 through 12z Nov 02 2017



CFS somewhat similar

Sometimes I wonder whether the world is being run by smart people who are putting us on, or by imbeciles who really mean it.

MARK TWAIN

