

SOUTH AMERICA / AUSTRALIAN GRAIN WEATHER

10/23/17 OVERVIEW

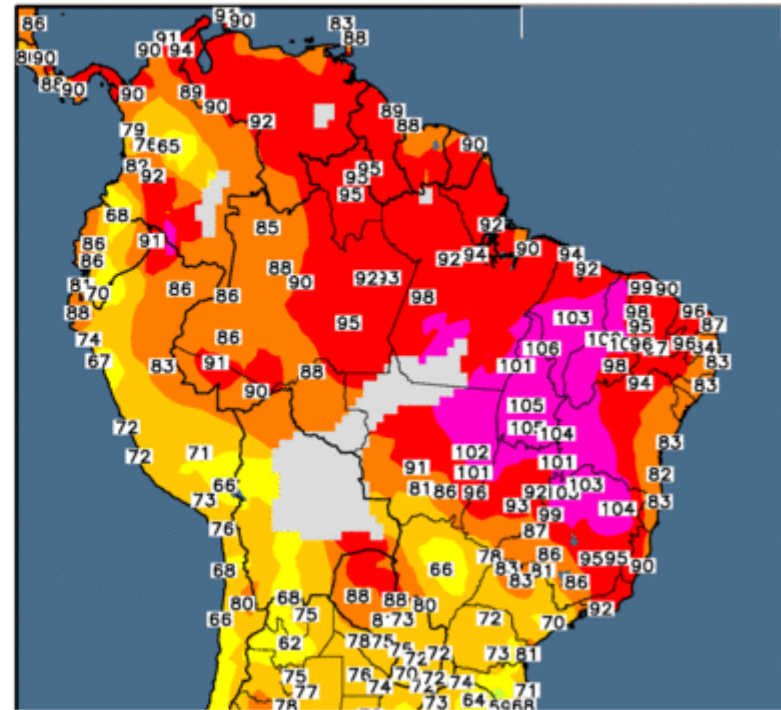
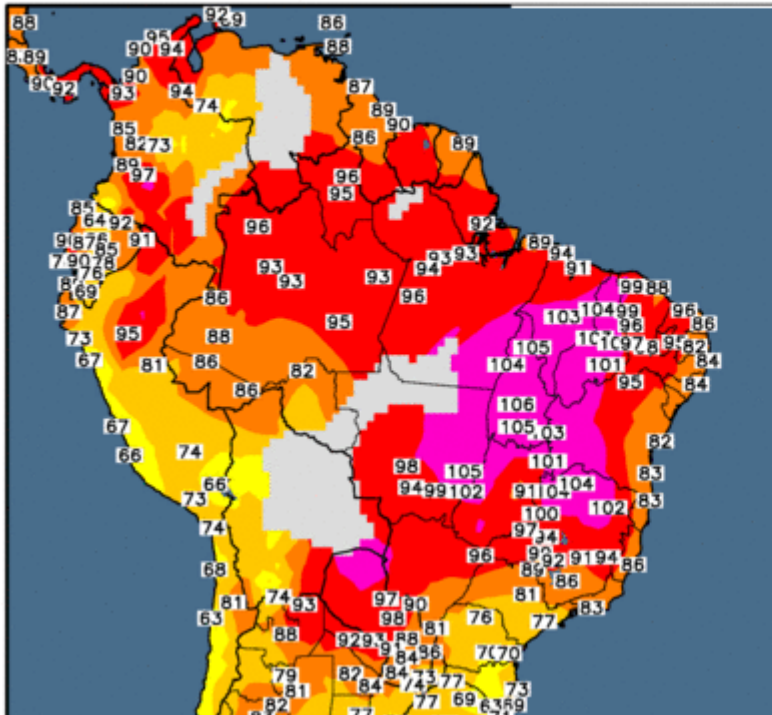
SUMMARY

There are no major changes from the forecast from last Friday. Weather models continue show a concentrated area of heavy rains over Eastern Paraguay and southwestern Brazil all the next five days. But the big story remains the expansion of the rain shield that will develop over the next few weeks into much of western central and East Central Brazil were has been extremely dry. As you read about port you'll see that the data shows the vegetative stress index up but but is extremely high over much of Brazil but. There are some reports which show areas of Central Brazil have not seen any significant rain and over 90 days.

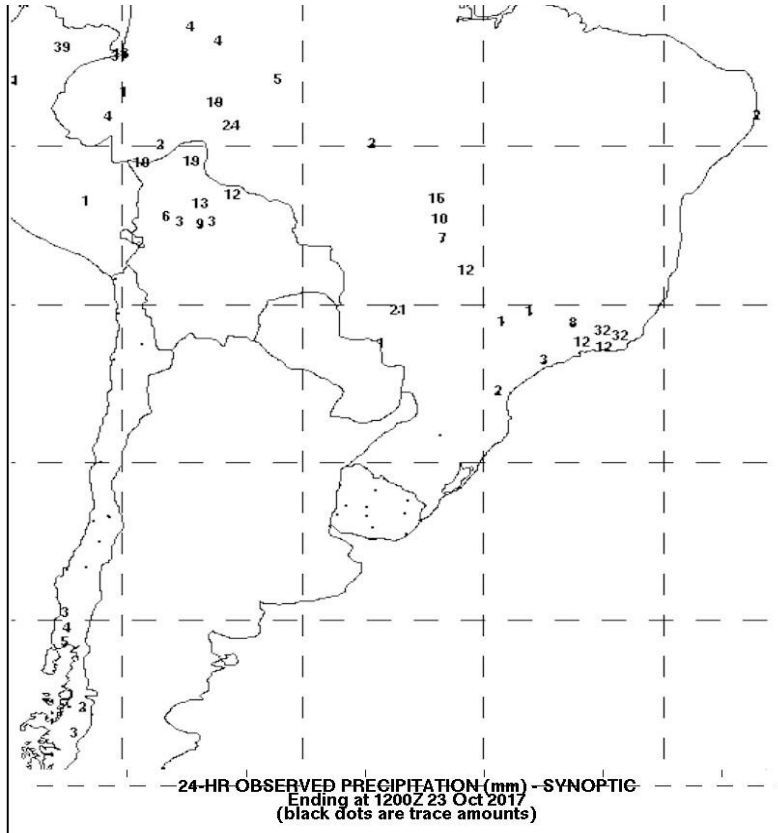
TEMPS OCT 22-OCT 22

Temperatures remain quite hot over the interior portions of western central and decent Brazil during the weekend. As you can see from the images below many areas reporting Max temperatures well above 100°/38° C. The heat even expanding into the eastern and central areas of Bahia Minas Gerias and northern sao Paulo. Southeast Brazil as well as most of Argentina saw temperatures either normal or below

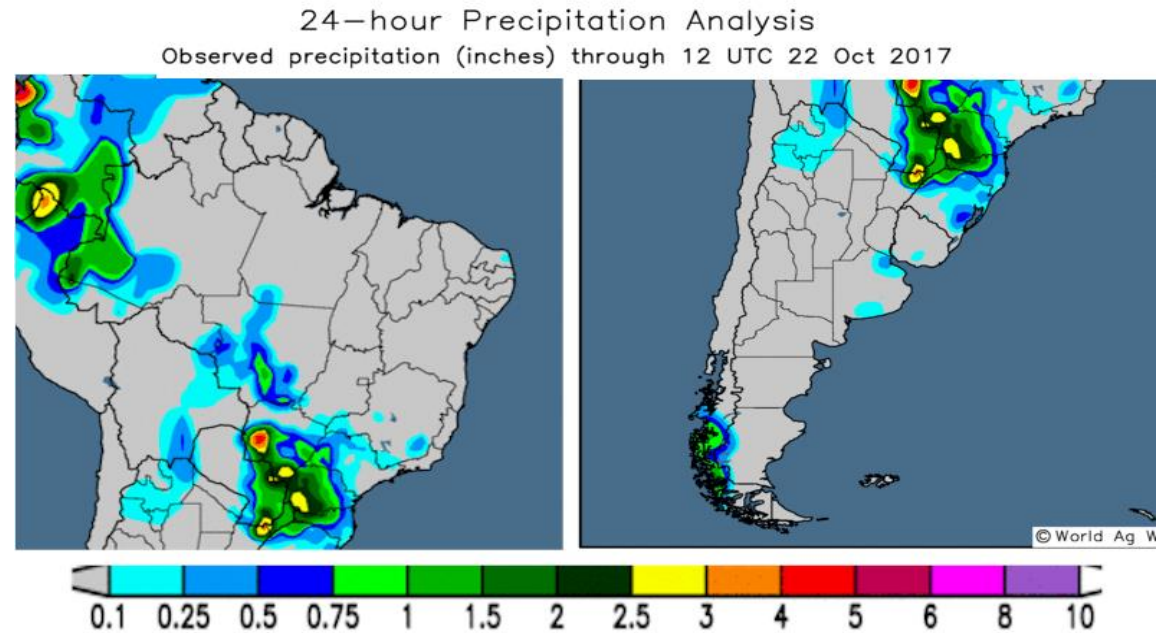
Observed Maximum Temperature (°F) 21 Oct 2017 Observed Maximum Temperature (°F) 22 Oct 2017



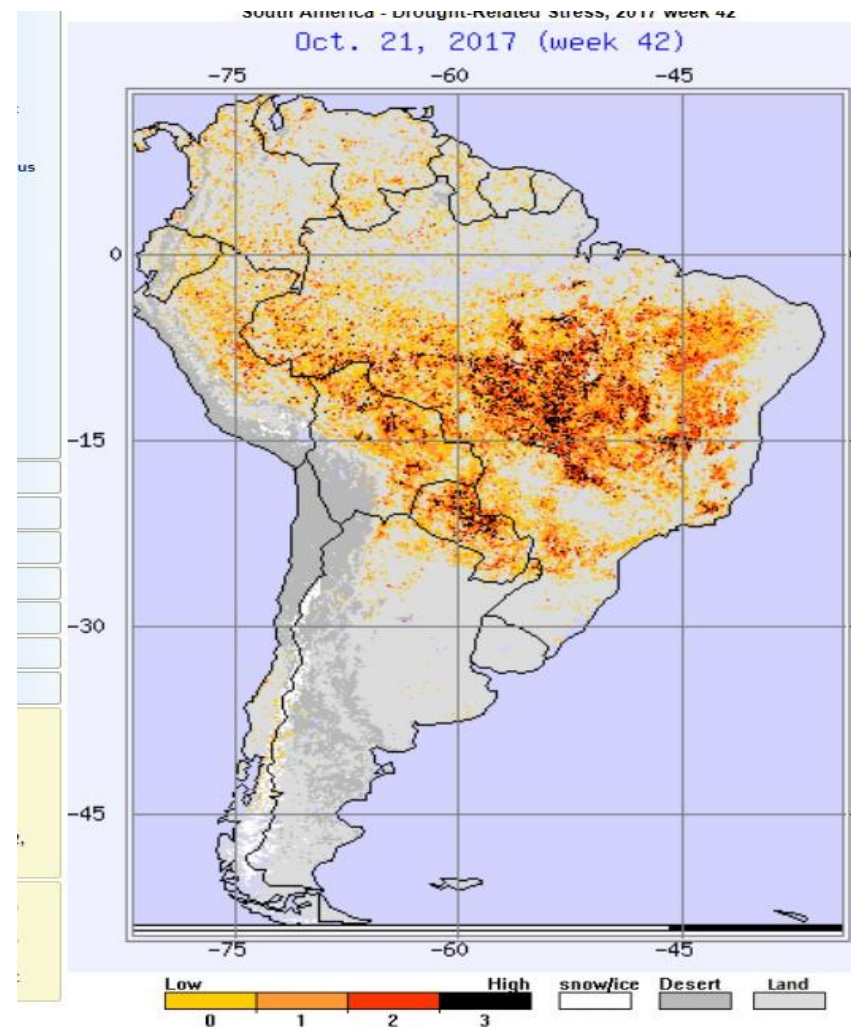
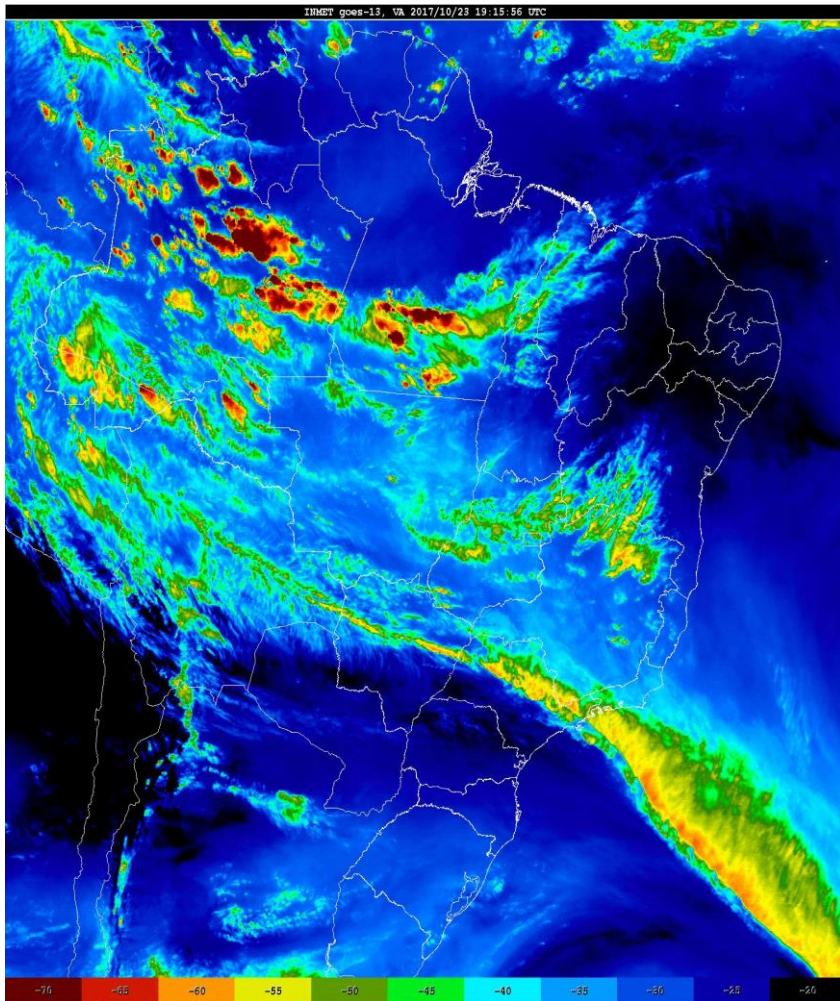
Rainfall as of 7:00 AM on 10/23/17 was pretty sparse over most areas. There was an area of 7-16mm/ 0.30-0.60" over eastern Mato Grosso widely scattered showers over 30% of Sao Paulo. All other areas were dry



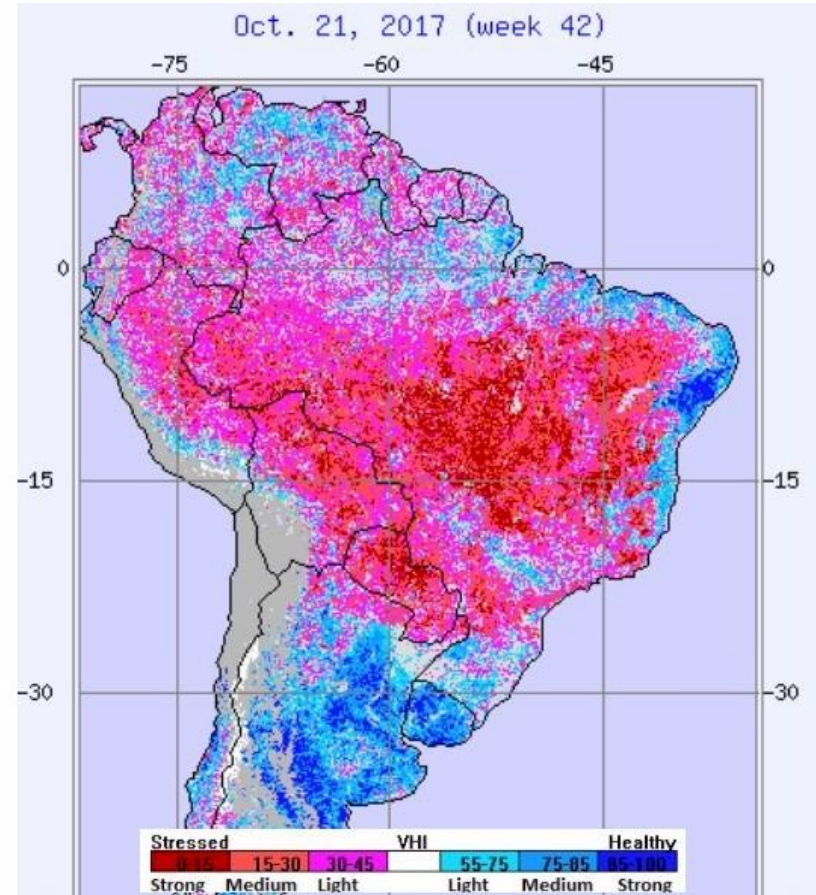
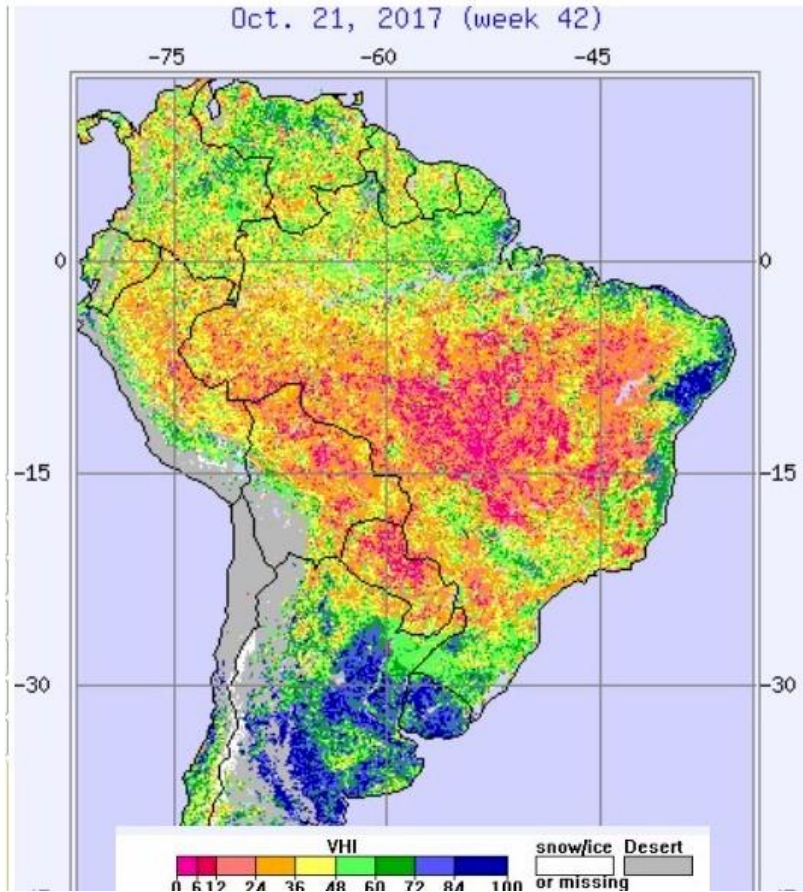
Most of Argentina was completely dry rainfall 10/21- 10/22 was quite a bit more active with a large area of 0.20-0.75" over eastern Paraguay western Parana into southern MGDS. There were some lighter rains over southwest Mato Grosso with amounts up to 1"/25mm



Rainfall as of 7:00 AM on 10/23/17 was pretty sparse over most areas. There was an area of 7-16mm/ 0.30-0.60" over eastern Mato Grosso widely scattered showers over 30% of Sao Paulo. Most of Argentina was completely dry rainfall 10/21- 10/22 was quite a bit more active with a large area of 0.20-0.75mm/ 0.75-3.0" over eastern Paraguay western Parana into southern MGDS. There were some lighter rains over southwest Mato Grosso with amounts up to 1"/25mm. This image on the RIGHT is valid as of October 21 -- it shows the drought conditions over much of Brazil because of the persistent lack a rain from last summer all the way to this October. Notice that there are some severely drought ridden areas over eastern Mato Grosso... Goias... Tocantins... and over western Paraguay into west Parana.



Not surprisingly the various vegetative health index these are pretty ominous looking if you're in Brazil but ideal over southeastern Brazil and Argentina. The image on the left rear of measures overall vegetative health and as you can see all of Argentina is an excellent shape while there remains route of pork conditions over most of Brazil except for the southeast and Paraguay. The image on the right measures both the vegetative stress and the vegetative health and one small we can see that the entire Amazon Basin in Brazil was under severe stress because of lack a rain. On the other hand conditions are extremely healthy with respect to rainfall and no stress over all of Argentina Uruguay and southeastern Brazil. There are some areas in Central Brazil which have not seen any significant rain over trace amounts in over 90 days

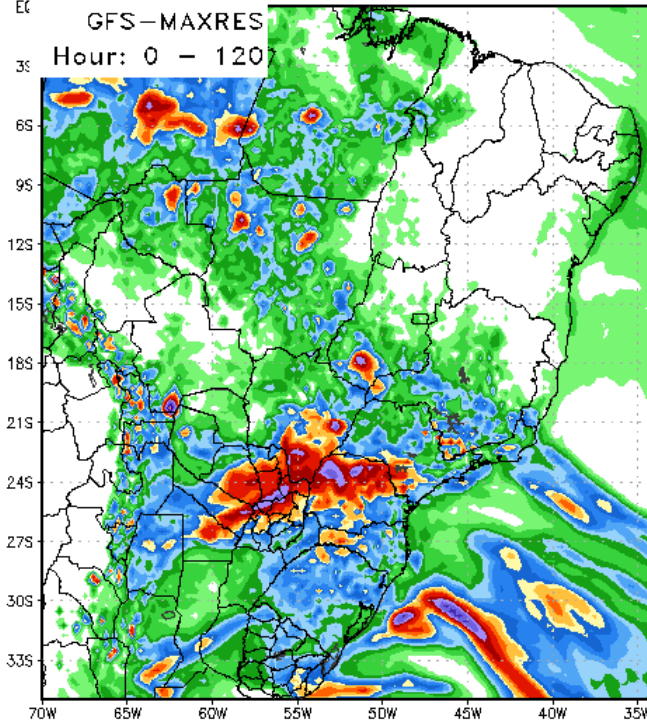


1-5 DAY

The model greening here is quite strong. Both the European and the GFS models show a concentrated area of 2-7"/ 50-175mm rains centered over eastern Paraguay Parana and Santa Catarina with 80% coverage. RGDS and portions of Corrientes sees 1"/ 25mm rains and 560% coverage. Similar rainfall amounts fall over western and central Mato Grosso. The GFS model also has some additional small but locally heavy thunderstorms over southern Goias and southern Minas Gerais

120 Hour Total Precipitation (in)

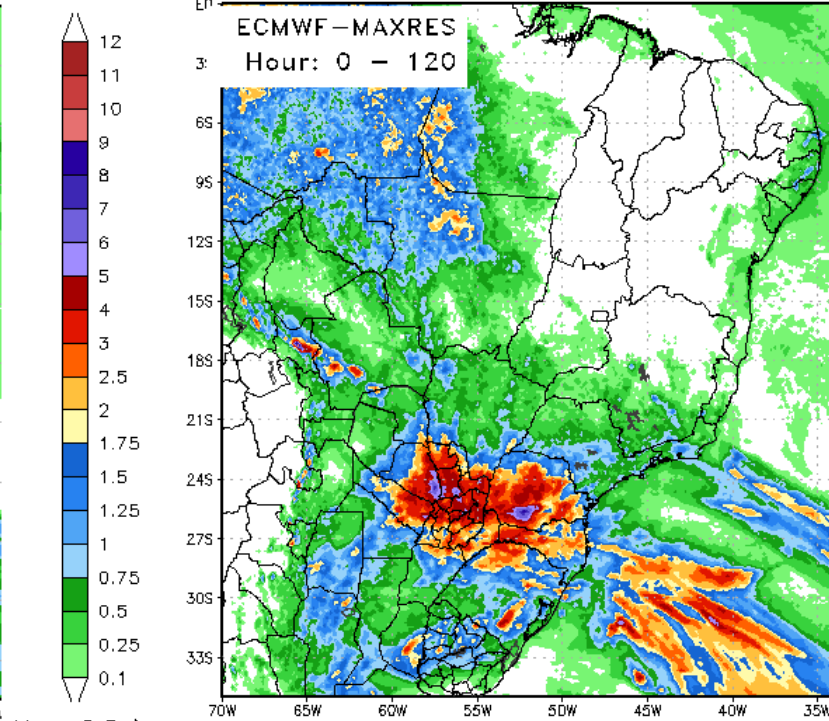
Valid: 12z Mon 23 Oct 2017 - 12z Sat 28 Oct 2017



StormVistaWxModels.com

120 Hour Total Precipitation (in)

Valid: 12z Mon 23 Oct 2017 - 12z Sat 28 Oct 2017



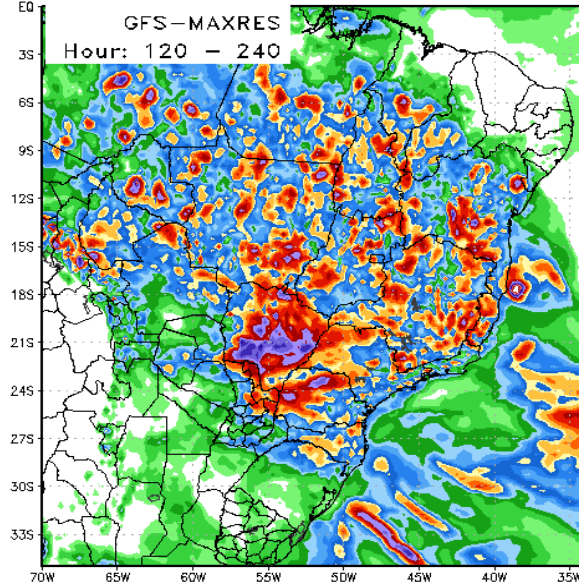
StormVistaWxModels.com

6-10 DAY.

Here we are seeing significant differences and the rainfall coverage and rainfall amounts but we do see model agreement in terms of the overall rain shield. Both models expand the rain significantly northward into all of western central and East Central Brazil and both models show off the rains of Argentina RGDS. The big difference is that the GFS has large area of 3-6"/ 75-150mm rains over 75% of MGDS .. 10-3"/ 25-75mm also with 70-80-% coverage over RGDS Parana Sao Laulo and 60% of Minas Gerais and central Brazil int Mato Grosso..

120 Hour Total Precipitation (in)

Valid: 12z Sat 28 Oct 2017 - 12z Thu 02 Nov 2017

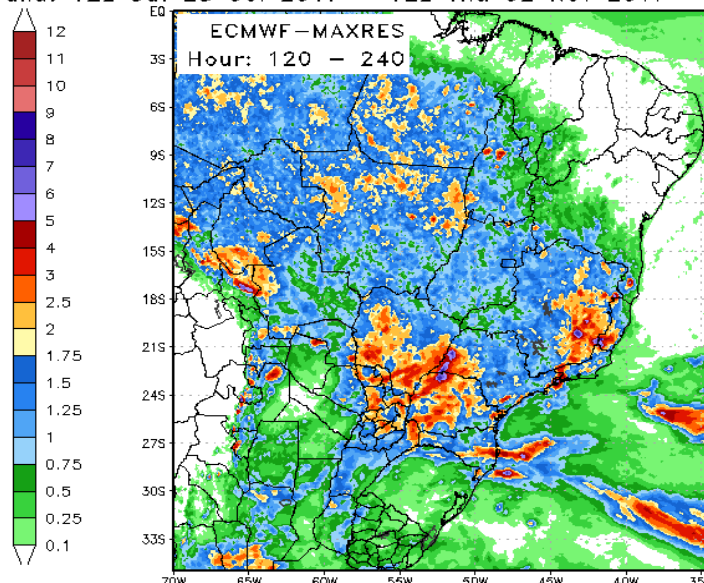


Max: 13.2 in
Min: 0.0 in

StormVistaWxModels.com

120 Hour Total Precipitation (in)

Valid: 12z Sat 28 Oct 2017 - 12z Thu 02 Nov 2017



Max: 8.9 in
Min: -0.0 in

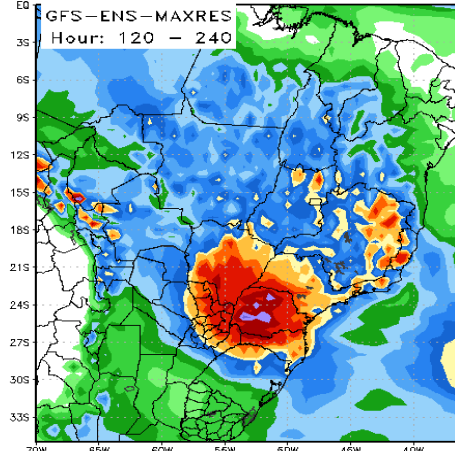
StormVistaWxModels.com

the model agreement is much better in the 6-10D ENSEMBLE as well. Notice that both models show a concentrated rain area of rain with amounts up to a least 4"/100mm centered over eastern Paraguay and southeastern Brazil. But we do see additional significant rains expanding into most of western

central and east central Brazil during the first several days of October.

120 Hour Total Precipitation (in)

Valid: 12z Sat 28 Oct 2017 - 12z Thu 02 Nov 2017

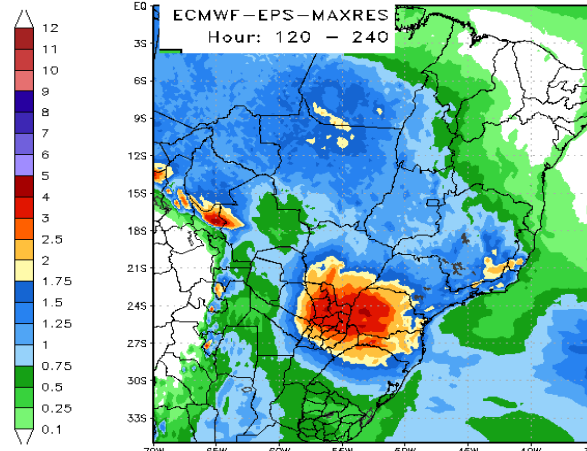


Max: 6.5 in
Min: 0.0 in

StormVistaWxModels.com

120 Hour Total Precipitation (in)

Valid: 12z Sat 28 Oct 2017 - 12z Thu 02 Nov 2017



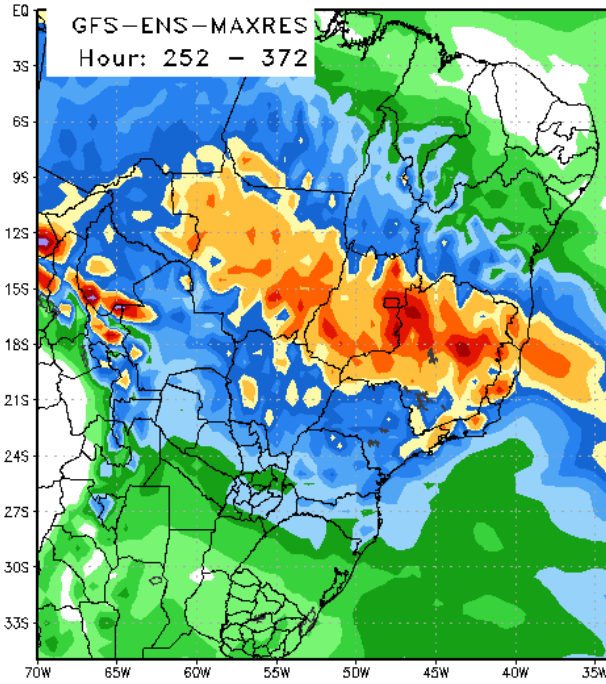
Max: 4.6 in
Min: -0.0 in

StormVistaWxModels.com

11-15 DAY

The model agreement here is also quite strong but again the GFS simply has more rain in it's rain shield than the European does. Both models to agree with the trend which showed up on the extended models about two weeks ago--- that significant rain would expand into most of western ...central ..and east central Brazil during the first week of November. Now clearly the GFS has a significant area of 1-3"/ 25-75mm rains cutting across the heart of Brazil and general west to East direction. The European has significant rain in all areas but not quite amounts of 1-3"/ 25-75mm. At this point in time it's important to realize that the model agreement is tending cords a wetter November

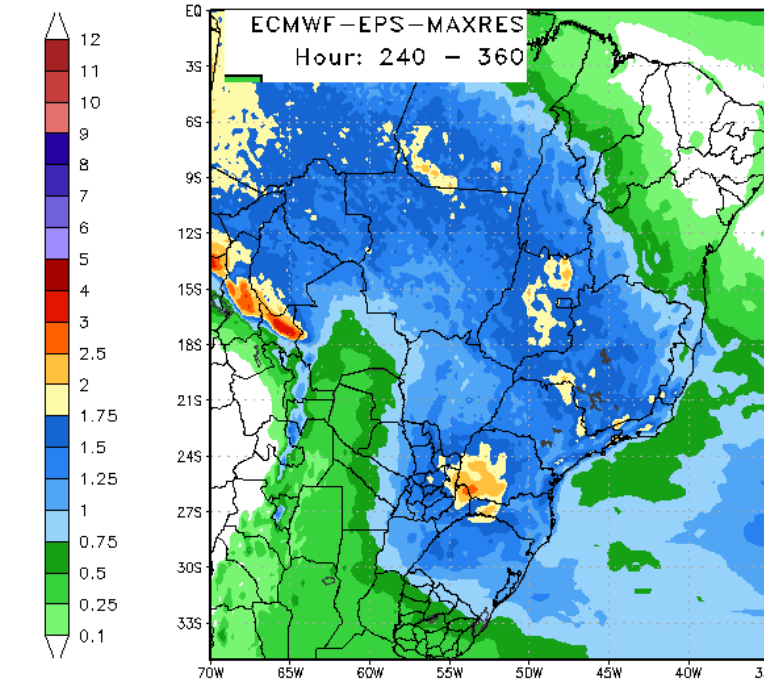
120 Hour Total Precipitation (in)
Valid: 00z Fri 03 Nov 2017 - 00z Wed 08 Nov 2017



Max: 5.8 in
Min: 0.0 in

StormVistaWxModels.com

120 Hour Total Precipitation (in)
Valid: 00z Thu 02 Nov 2017 - 00z Tue 07 Nov 2017

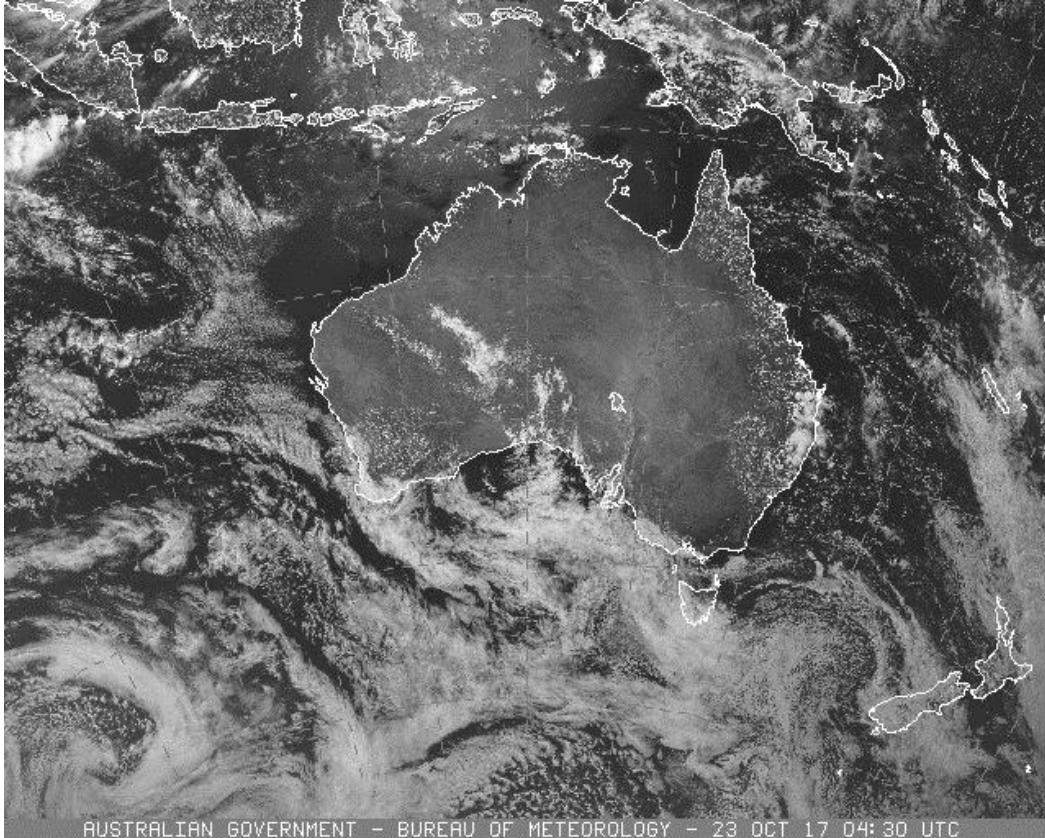


Max: 3.9 in
Min: 0.0 in

StormVistaWxModels.com

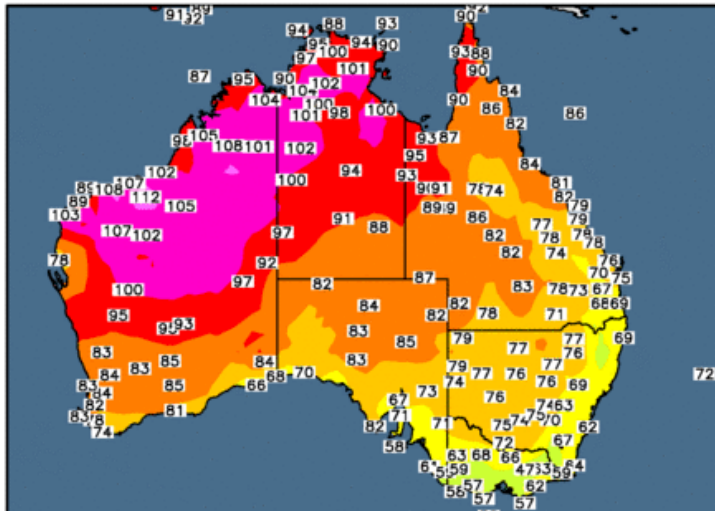
AUSTRALIAN GRAIN WX

Things look rather quiet over most of Australia for next 10 days without a lot of significant rain and temperatures very close to normal for this time of year over southwestern south central and southeastern areas..

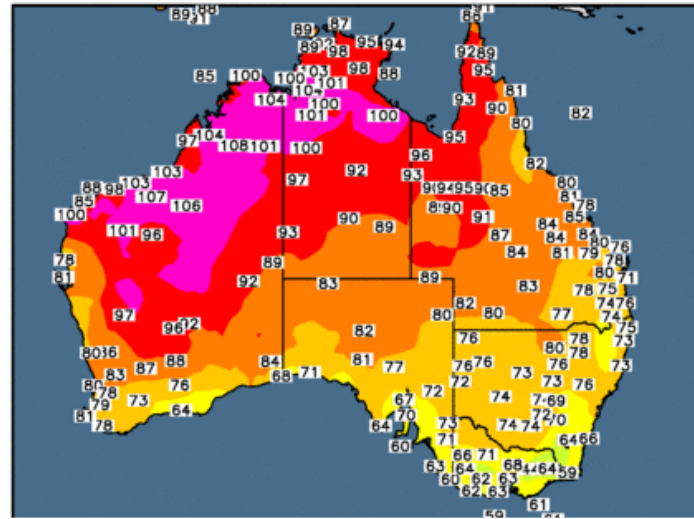


The morning satellite picture does not show a lot of activity anywhere... And the temperatures over the past two days have remain very close to seasonal for this time of year of all the heat over far northwestern and North Central Australia. Most of the readings over southwest Australia... the Southern Australia Territory... Victoria New South Wales.... and southeastern Greenland have been in the 70s/ 25c

Observed Maximum Temperature (°F)
21 Oct 2017

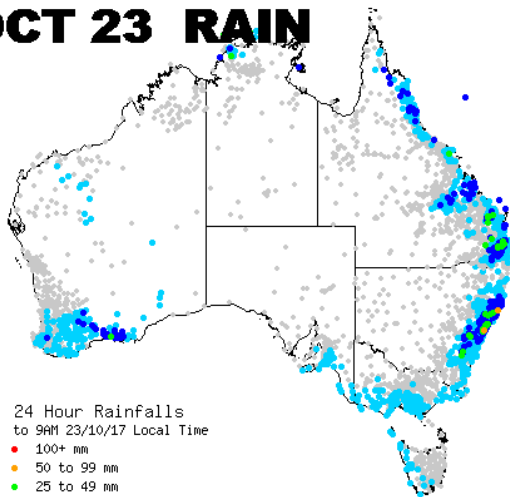


Observed Maximum Temperature (°F)
22 Oct 2017



Rainfall as of October 23 was non-existent except for the coastal areas of Victoria, New South Wales, and southeast Queensland, but there was some light rain over the southwest area. Things even drier on October 22 over most of Australia.

OCT 23 RAIN

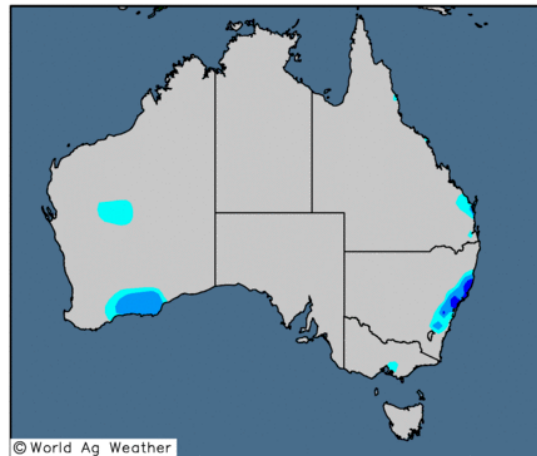


24 Hour Rainfalls
to 9AM 23/10/17 Local Time

- 100+ mm
- 50 to 99 mm
- 25 to 49 mm
- 10 to 24 mm
- >0.2 to 9 mm
- 0 mm

(Updated 12:35PM AEST)

24-hour Precipitation Analysis
Observed precipitation (inches) through 12 UTC 22 Oct 2017



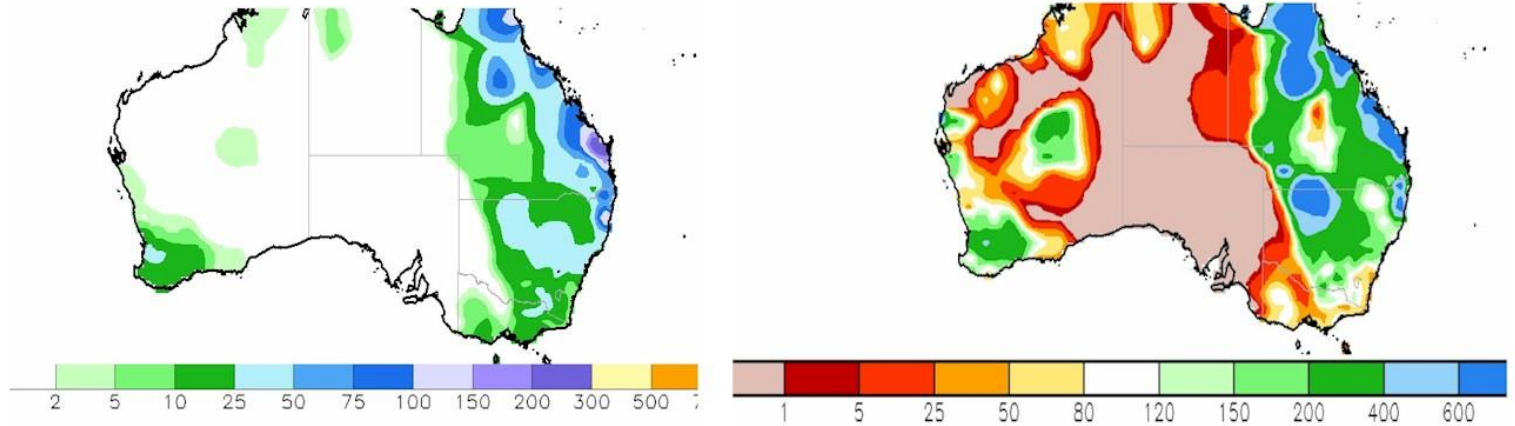
© World Ag Weather



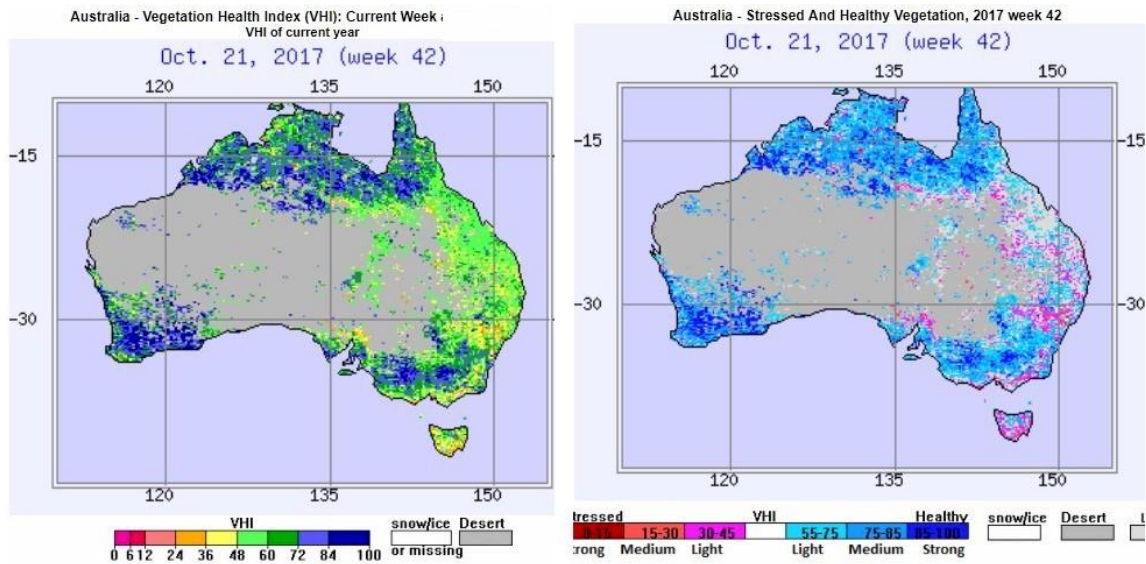
Over the last 7 yrs we have seen significant rains over southeastern Queensl and and moderate rains over the eastern half of New South Wales and the northeast and Queensland. The rainfall anomalies show 200 to 400% above normal over most of New South Wales and southeastern Queensland. By the rainfall anomalies are below normal over Victoria and the Southern Australia Territory

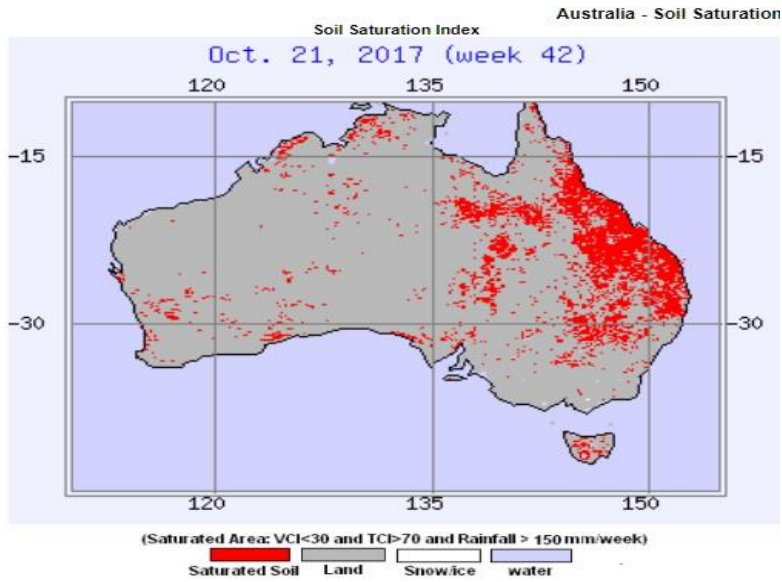
CPC Unified Gauge 7-Day Total Rainfall (mm)
Period: 150ct2017 - 210ct2017

CPC Unified Gauge 7-Day Percent of Normal Rainfall (%)
Period: 150ct2017 - 210ct2017



the Australian vegetative health index and health and stress index values look to be in great shape. .

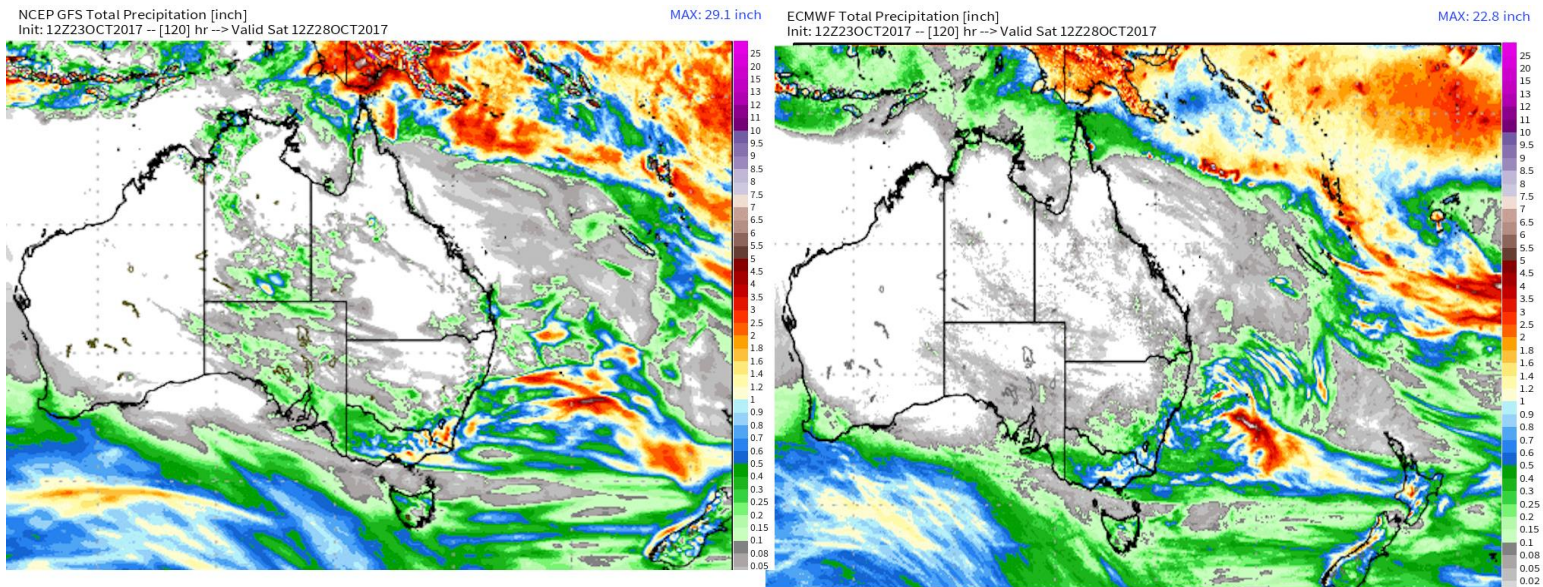




This image shows the soil moisture content and as you can see again Queensland is seriously wet and flooding will continue to be an issue when that area sees more heavy rains.

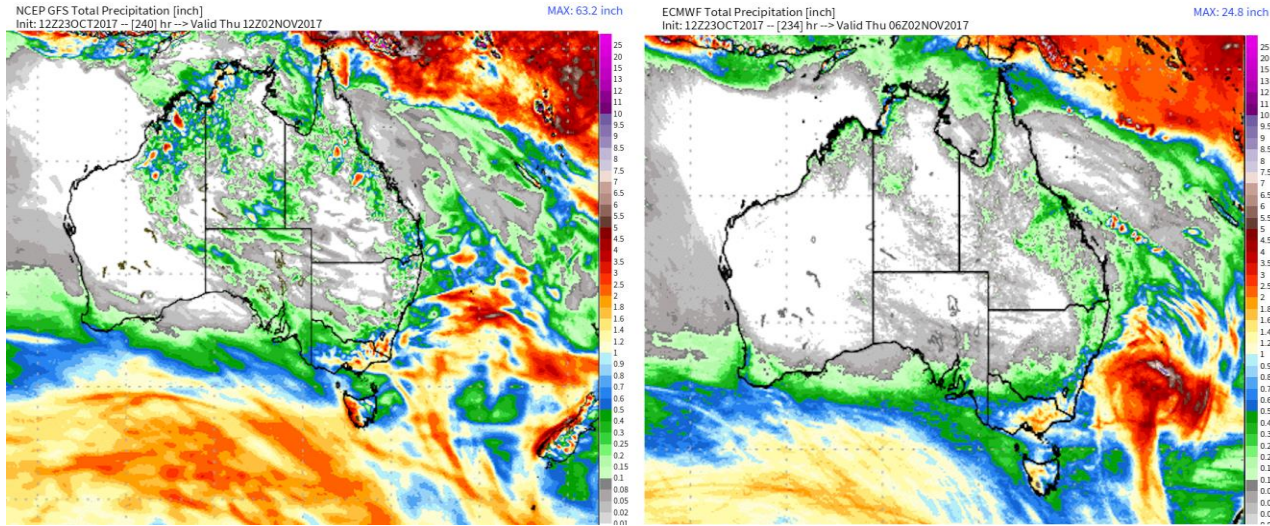
1-5 DAY

things remain very quiet all the next five days with no significant rain outside of some moderate rain over Victoria up to 1 inch. All other areas but in the grain regions of Australia are dry.



6 - 10 DAY

Not much changes in the sixth attend a. As you can see th the only significant rain that falls is all of Victoria. All other areas of the grain region's and Australia are dry in the 6 to 10 day without any significant rain.



DT wxrisk.com OFFICE 804 715 8330 CELL 804 307 8070