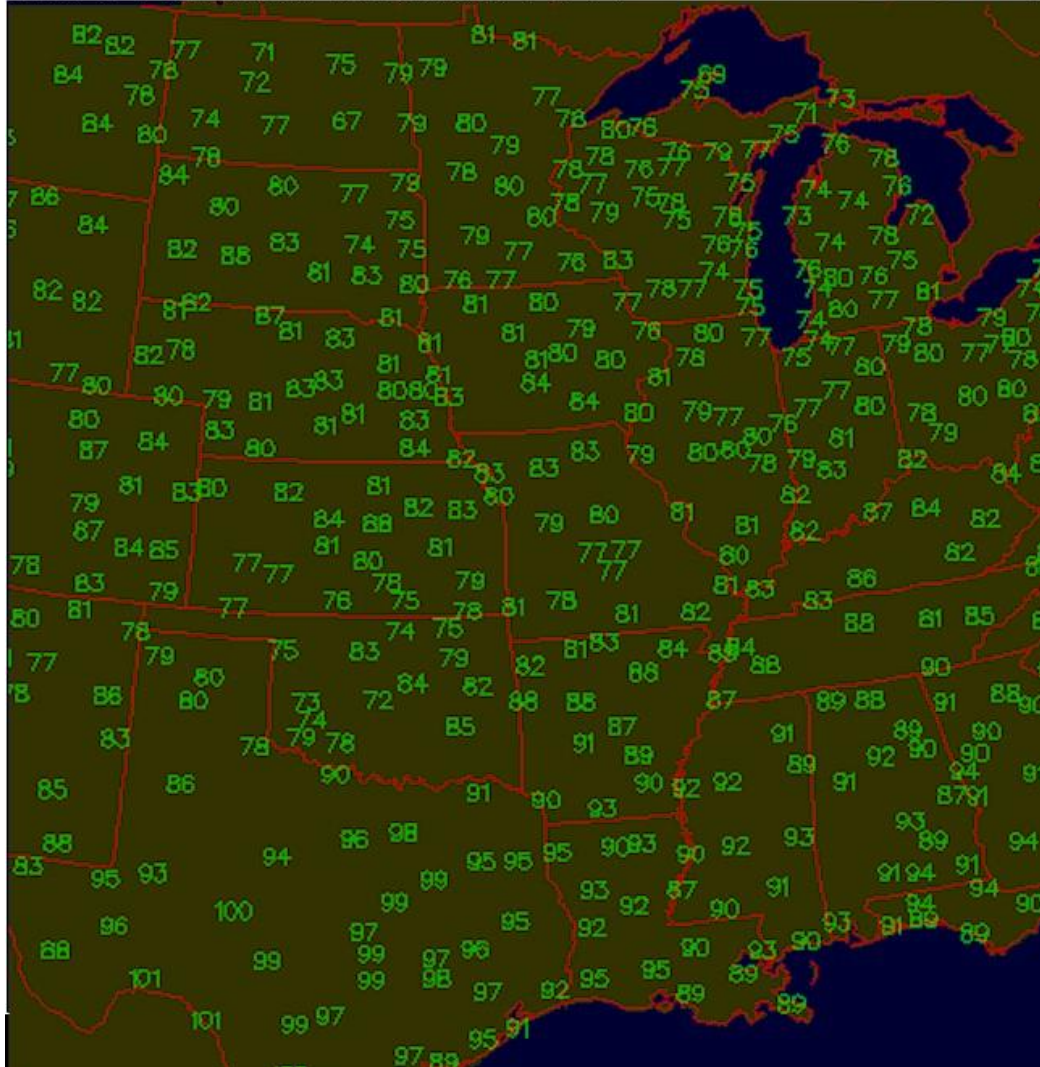


# LATE SUNDAY/ EARLY MONDAY US GRAIN WEATHER 8/13/17 OVERVIEW

## SUMMARY

As we have been talking about for the past several days the pattern which has kept all the rain out of the Plains and the Midwest and in the Deep South is coming to an end. Because that pattern is coming to an end -and the cool temperatures are also coming to an end -the trend over the weekend has been to increase the rains over the next several days over the WCB and the eastern Plains. This has been reflected on all the weekend models but especially on the Sunday afternoon. We did forecast this trend would develop over the weekend and so far our prediction regarding the model trends appears to be correct. In addition the 6-10 day Models are also wetter than the 11-15 Day from last week and the new CFS in week 3 is also fairly wet.

Surface Maximum temperature [F] Data for 00Z 13 AUG 17



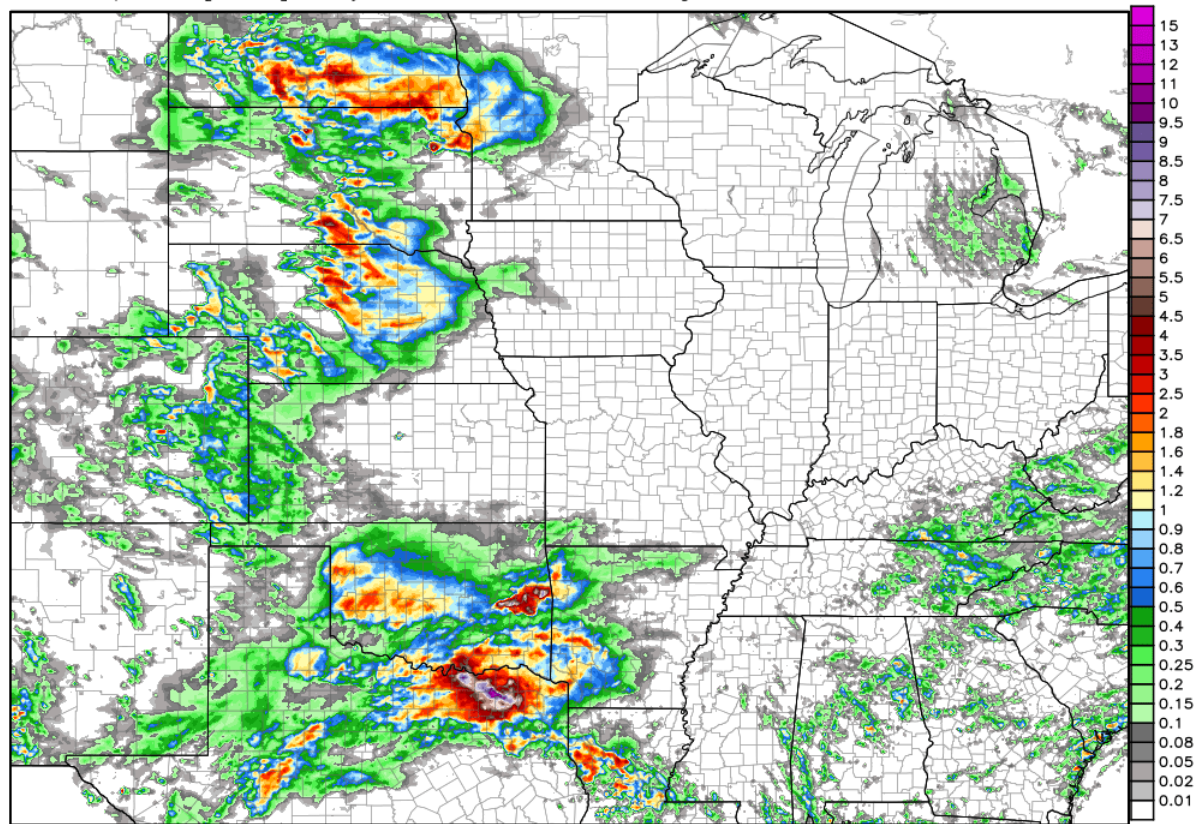
## MAX TEMPS 12 AUGUST

70s over ND MN WI MI OH IND ILL... and over central and eastern OK and southwest KS.. 80s over KY TN ARK MO IA eastern MT/WY / COL SD NEB most of KS the Tx Panhandle 90S over the rest of TX with some 100+ degree readings in far southern TX

## RAINFALL SATURDAY 12 AUGUST 0700 cdt - SUNDAY 12 AUGUST 0700 CDT

Rainfall in last 24 hours featured three distinct areas all of which fell across the Plains and none of which fell over the Midwest. The first area featured 0.5-4.0"/12-100mm with 70% coverage across central and southern ND and far northeast portions of SD into west central MN. The second area featured 0.5- 3.0"/ 12-75mm rains over central and north central NEB with 60-70% coverage. The third significant area of rain from 0.5-2.0"/ 12-50mm rains across 70% of central and Eastern Ok..northeastern TX into north central TX. However embedded this area was a heavy thunderstorm over northeastern Tx which dropped rainfall amounts up to 9-10"/ 225-250mm. These rains fell east of Dallas .. NORTH of I- 20 over areas such as Sulfur springs ...Commerce ...and Mount Vernon Texas.

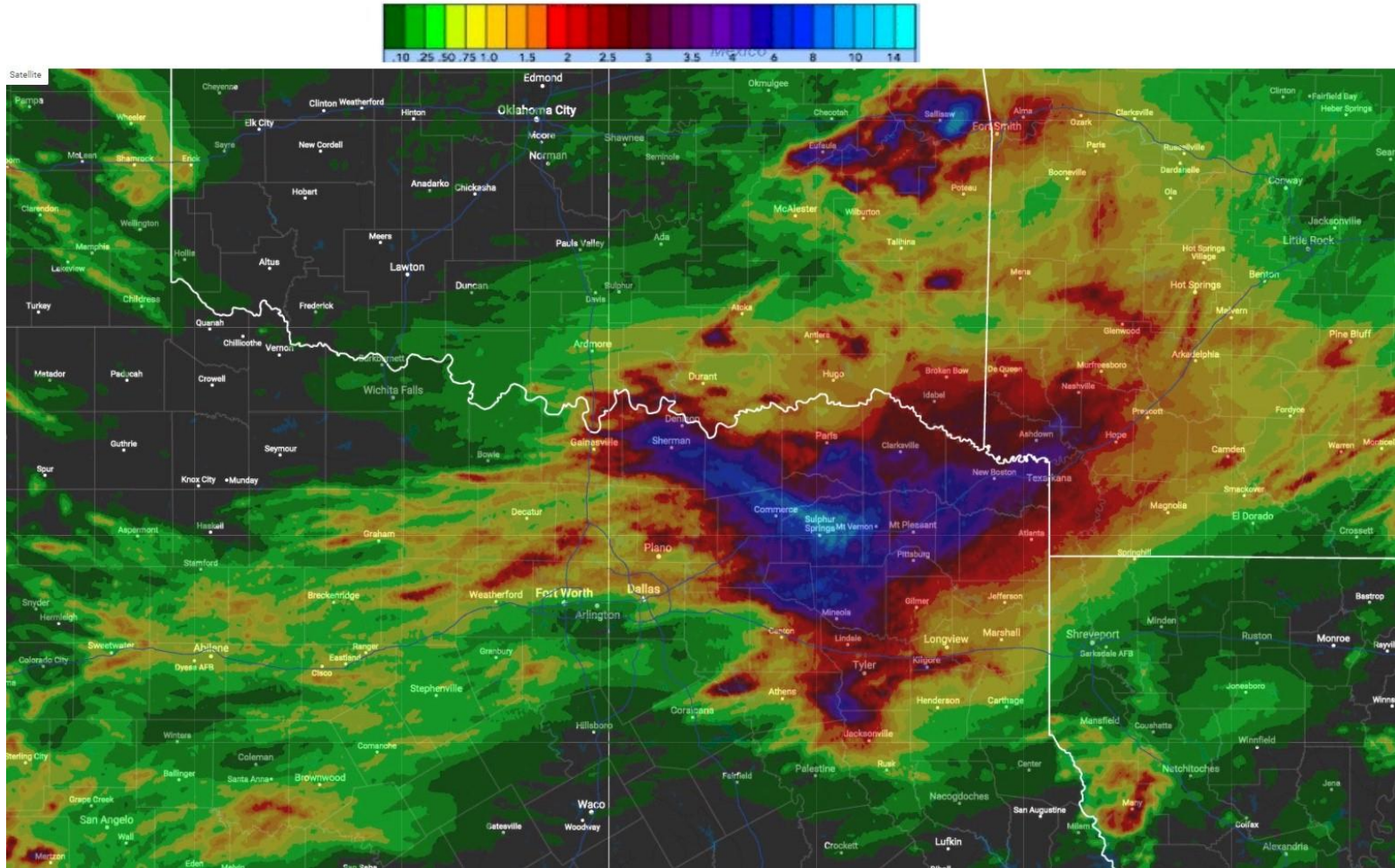
NWS Precipitation Analysis 4-km HRAP Grid -- 1-day Total Accumulation Domain Max: 13.1 in.  
Total Precipitation [inches] 1 days 12Z12AUG2017 --> through --> 12Z13AUG2017



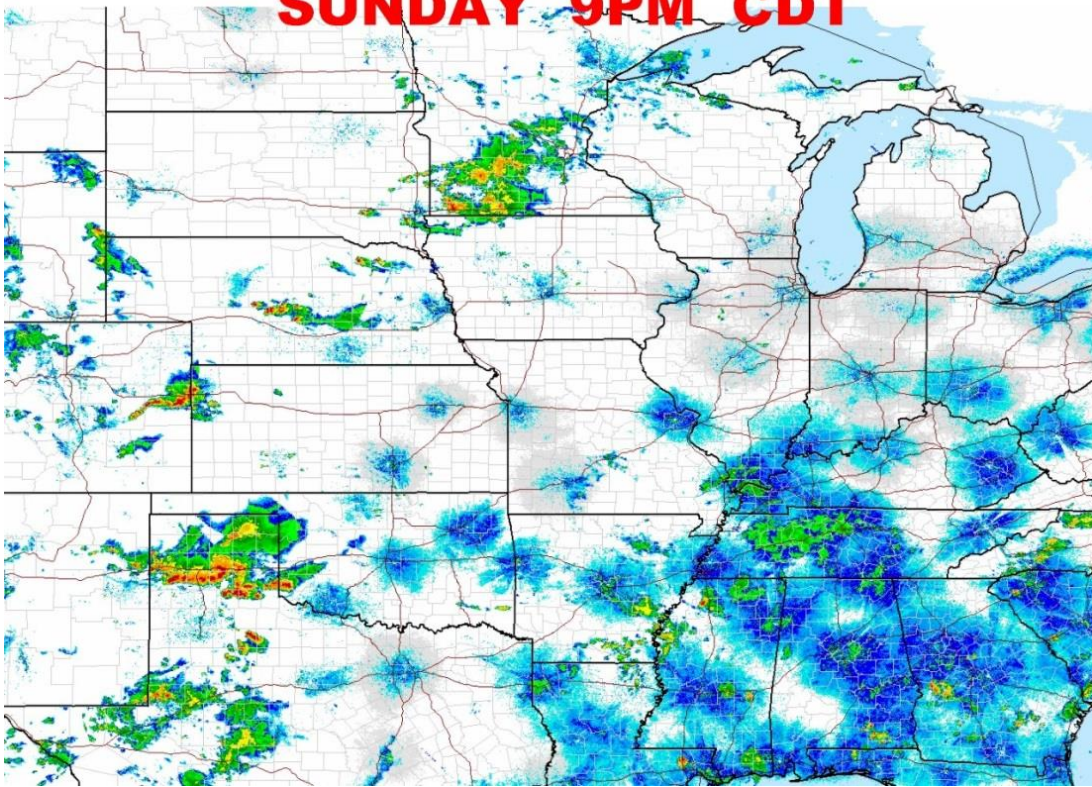
4 km HRAP grid | End of hydrological day at 1200 UTC | <http://water.weather.gov/precip>



# ENLARGED / FOCUS ON BIG RAINS NORTHEAST TX



**SUNDAY 9PM CDT**



The Sunday EVENING radar shows storms over 50% of the southwest and central MN and over the Texas Panhandle with 75% coverage and 40% coverage on southwest TX. There are some scattered storms over 25% of central NEB

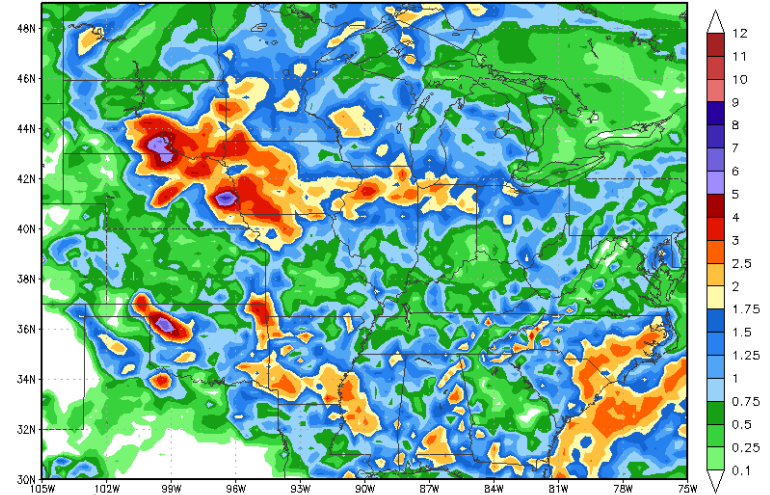
**1-5 DAY**

The main issue is the significant rain which appears to be showing up on many of the models all the next five days for the eastern Plains and the WCB. We talked about last week how the model trend was going to shift for this weekend and that appears to be the case.

The operational GFS Sunday afternoon is quite wet showing a large area of 1-4"/ 25-100mm rains over 75% of the eastern ...central ...and upper Plains and all of the WCB with lighter rains of 1-2"/ 25-50mm into the rest of the Midwest and Deep south. This is supported by the GFS ensemble and the Canadian model. The operational European model is somewhat drier over the WCB with larger gaps and Iowa but the European ensemble is also quite wet but- almost as wet as the Canadian and GFS ensemble.

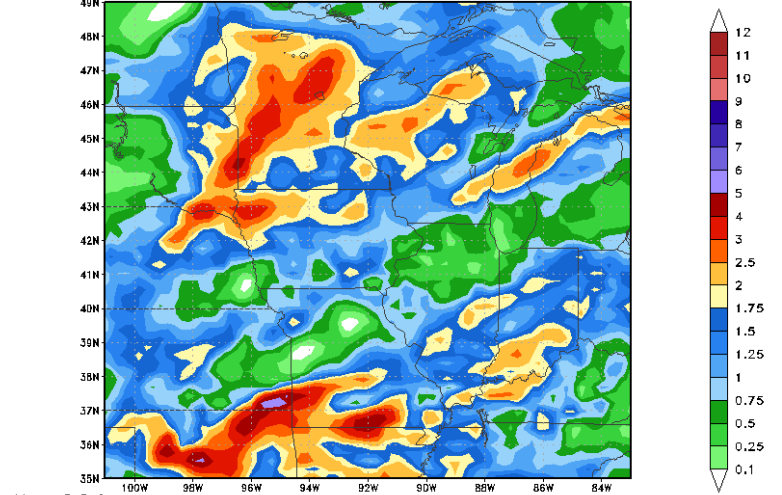


120 Hour Total Precipitation (in)  
Valid: 12z Sun 13 Aug 2017 - 12z Fri 18 Aug 2017  
GFS-MAXRES  
Hour: 0 - 120

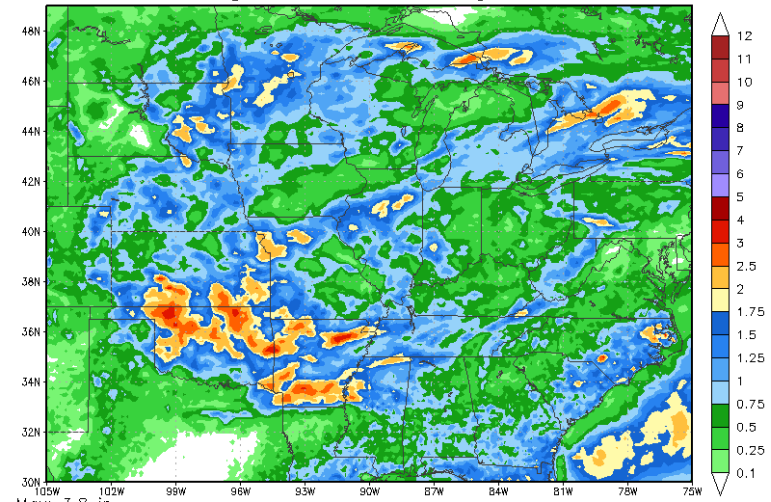


Max: 7.7 in  
Min: 0.0 in  
StormVistaWxModels.com  
Init: 12z Sun 13 Aug 2017  
2017-08-13-16:02  
Valid: 12z Sun 13 Aug 2017 - 12z Fri 18 Aug 2017

5 Day Total Precipitation (in)  
Valid: 12z Sun 13 Aug 2017 - 12z Fri 18 Aug 2017  
CMC  
Hour: 0 - 120



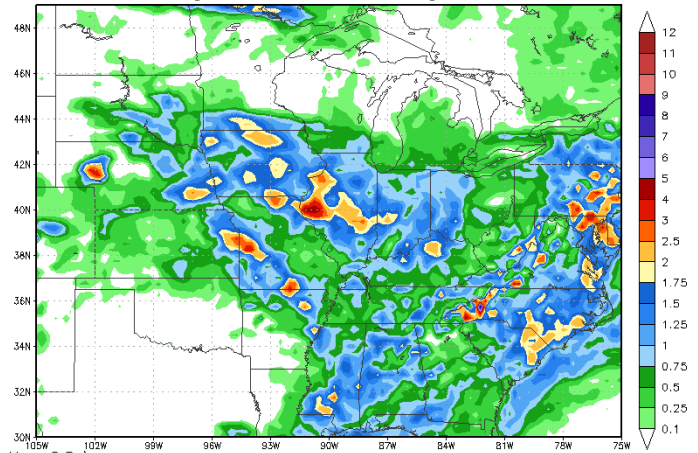
Max: 6.0 in  
Min: 0.0 in  
StormVistaWxModels.com  
Init: 12z Sun 13 Aug 2017  
2017-08-13-12:19  
Valid: 12z Sun 13 Aug 2017 - 12z Fri 18 Aug 2017



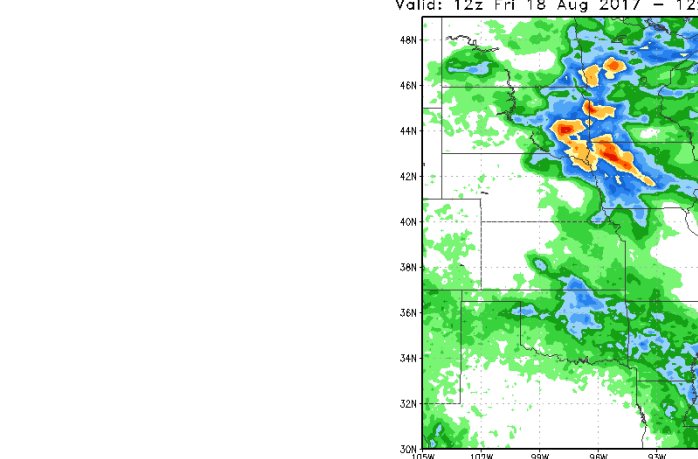
Max: 3.8 in  
Min: 0.0 in  
StormVistaWxModels.com  
Init: 12z Sun 13 Aug 2017  
2017-08-13-18:20  
Valid: 12z Sun 13 Aug 2017 - 12z Fri 18 Aug 2017

# 6-10 DAY

120 Hour Total Precipitation (in)  
Valid: 12z Fri 18 Aug 2017 - 12z Wed 23 Aug 2017 Hour: 120 - 240

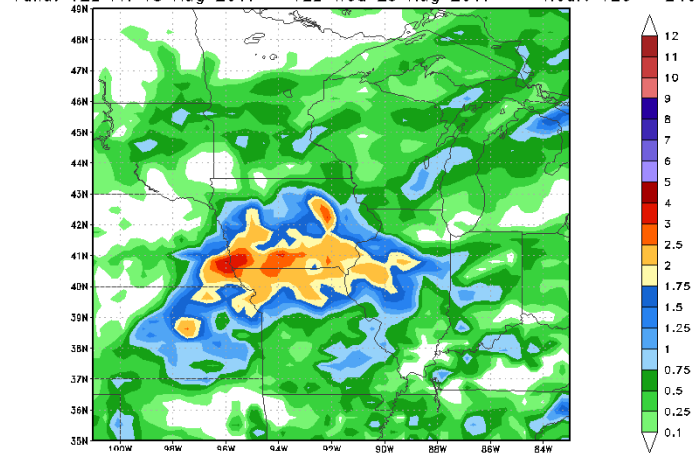


StormVistaWxMo 120 Hour Total Precipitation (in)  
Valid: 12z Fri 18 Aug 2017 - 12z Wed 23 Aug 2017 Hour: 120 - 240

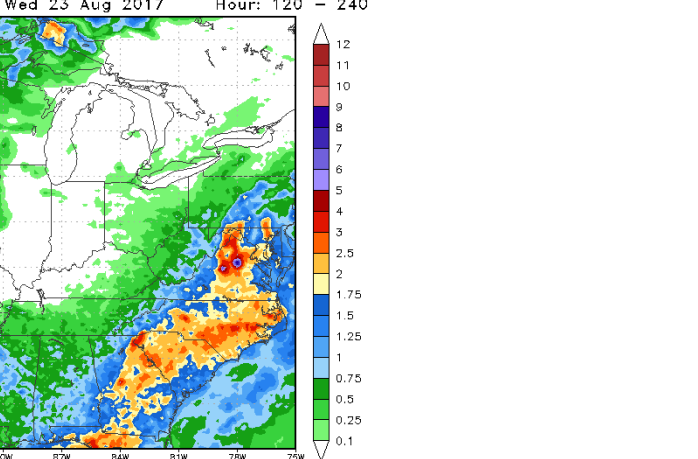


StormVistaWxModels.com 120 Hour Total Precipitation (in)  
Valid: 12z Fri 18 Aug 2017 - 12z Wed 23 Aug 2017 Hour: 120 - 240

5 Day Total Precipitation (in)  
Valid: 12z Fri 18 Aug 2017 - 12z Wed 23 Aug 2017 Hour: 120 - 240



StormVistaWxMo 5 Day Total Precipitation (in)  
Valid: 12z Fri 18 Aug 2017 - 12z Wed 23 Aug 2017 Hour: 120 - 240



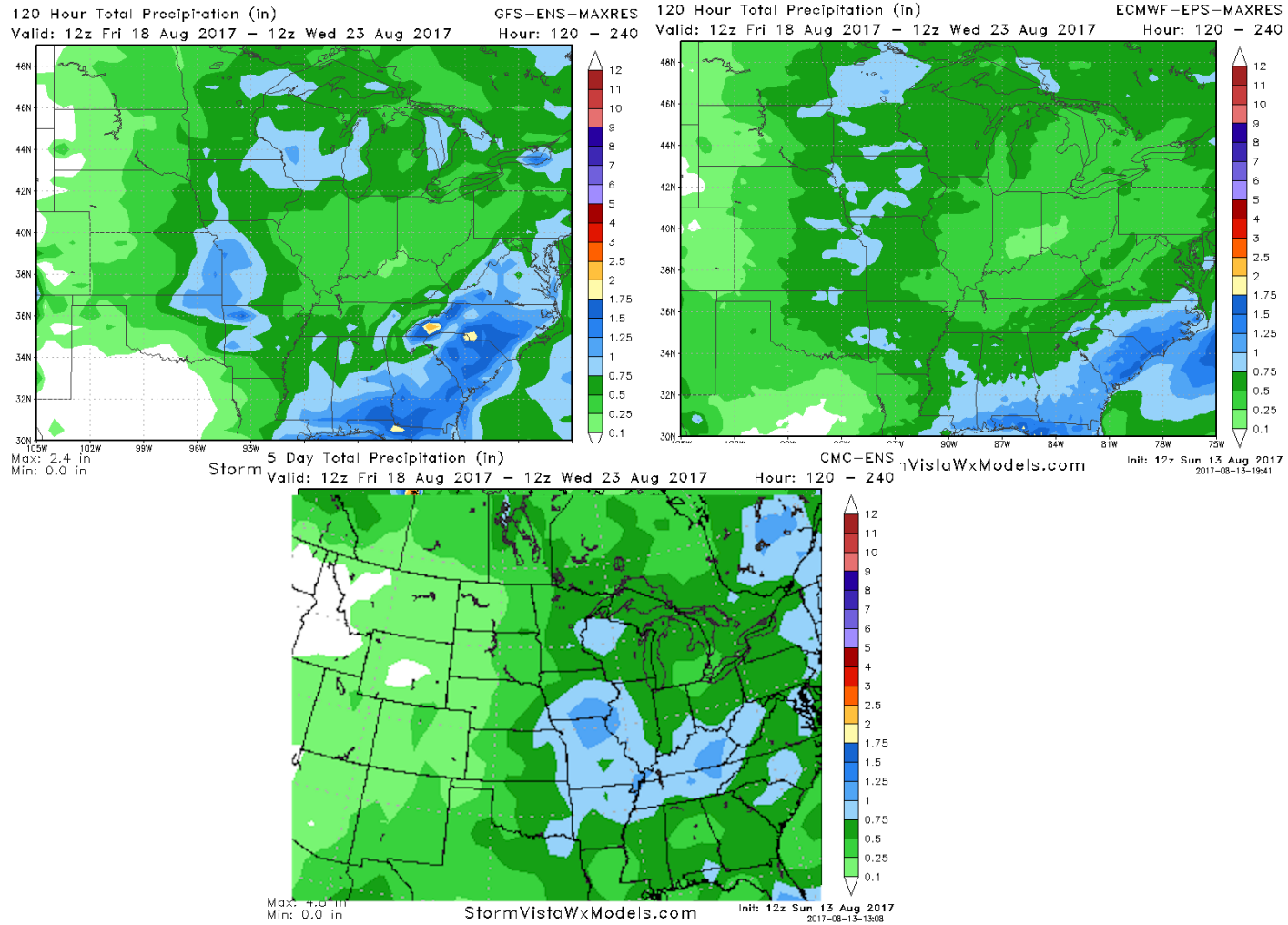
StormVistaWxModels.com 5 Day Total Precipitation (in)  
Valid: 12z Fri 18 Aug 2017 - 12z Wed 23 Aug 2017 Hour: 120 - 240

The regular GFS model stays WET with over 75% coverage of IA ILL IND into western OH ..and over eastern NEB into southwest 1-3"/25-75mm.

The European Model is somewhat similar but its rains of 1-3"/ 25-75mm are over western half of IA southern MN and eastern third of SD with 60% coverage. The Euro is MUCH drier over rest of MO ILL IND and OH.

The Canadian model has good rains over southern IA.. eastern KS the north half of MO into west central ILL

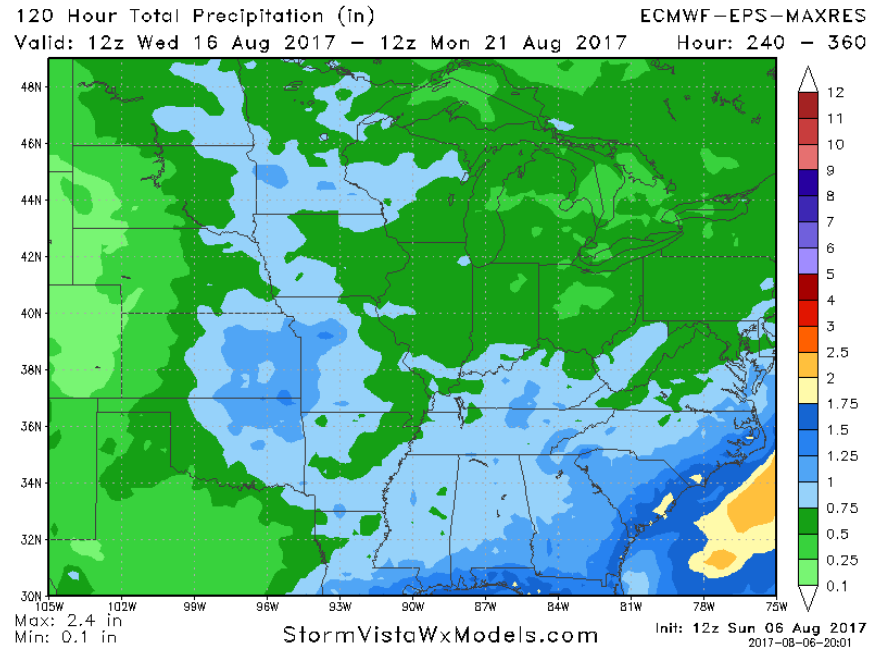
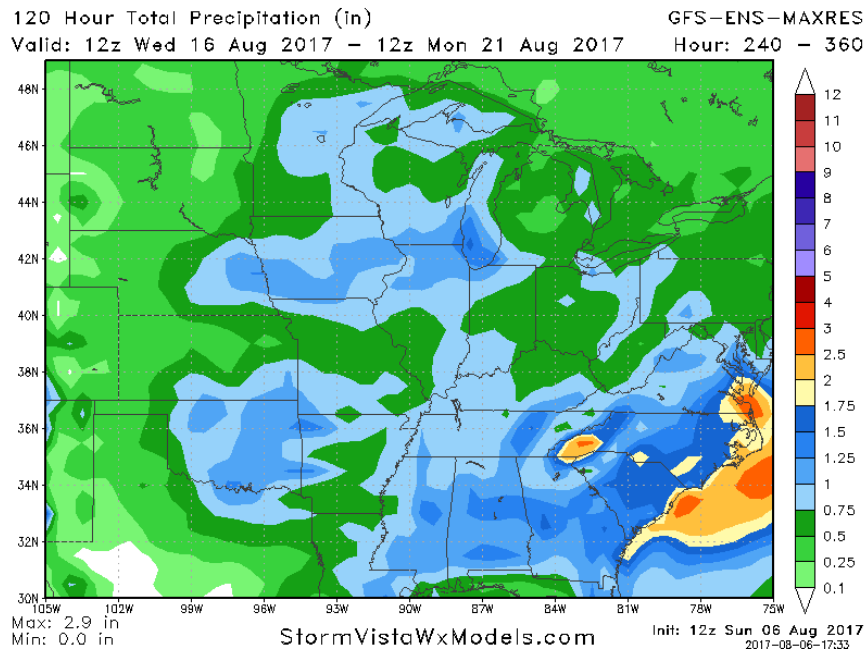
**GFS CANADIAN and EURO ENSEMBLES are also in good agreement** The GFS ensemble has moderate rains over MN WI IA MO of 0.50-1.50"/ 12-38mm and less rain over ILL ID OH KY. The European ensemble is very close to this and is the Canadian ensemble





# 11-15 DAY

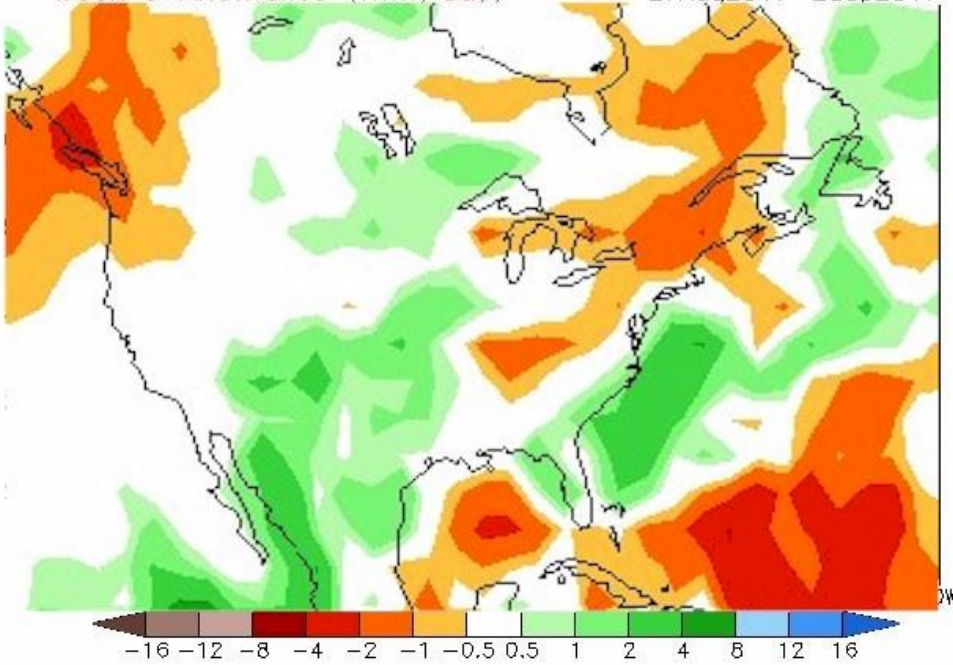
the GFS ensemble is "MOSTLY DRY" over the WCB as is the ECB whereas the Euro and Canadian ensemble show more moderate rains over 75%+ of the WCB as well as eastern third of ND SD NEB KS and northern MO



WEEK 3 CFS AUG 27 - SEPT 2- above Normal rains over all of the Plains and WCB

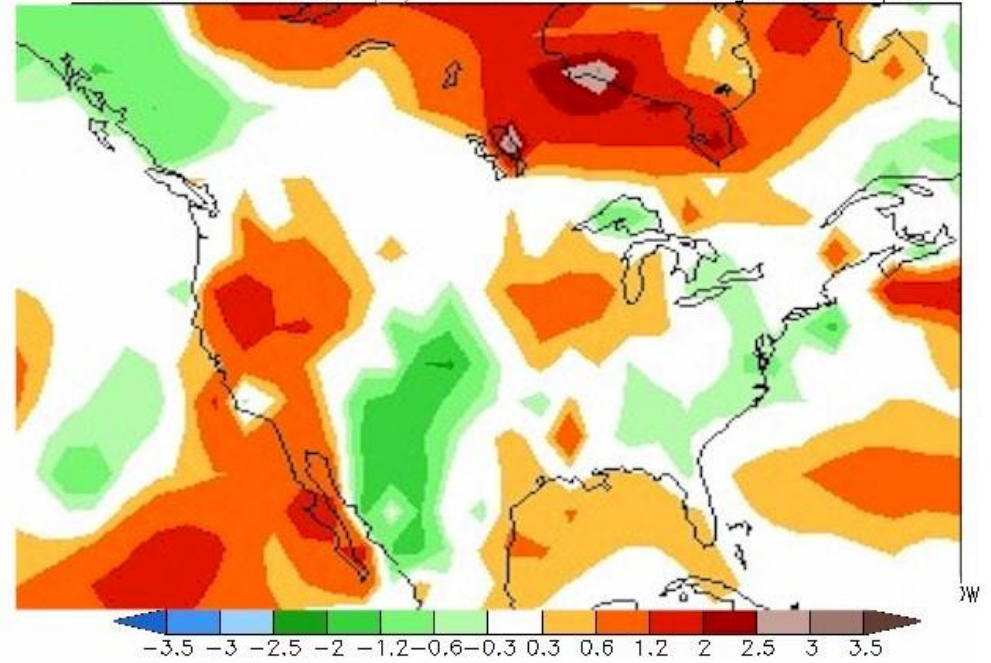
CFSv2 Weeks 3 & 4 Precipitation  
16 Member Ensemble Mean Forecast from 12Aug2017

Week 3 Anomalies (mm/day) 27Aug2017-2Sep2017



CFSv2 Extended Range Temperature  
16 Member Ensemble Mean Forecast from 12Aug2017

Week 3 Anomalies (K) 27Aug2017-2Sep2017



\*\*\*\*\*

DT wxrisk.com OFFICE 804 715 8330 CELL 804 307 8070