

THE LAST WORD

FRIDAY AFTERNOON US GRAIN WEATHER

and looking at Sunday

8/11/17 OVERVIEW

The main issue continues to remain the uncertainty with regard to rainfall over the WCB and the eastern Plains area sometime next week into next weekend. All the midday models would turn wetter and this is strongly supported by the midday ensembles. But given the history and how dry it has been over the WCB ...even a moderate rainfall forecast can be treated with a lot of skepticism. We are not forecasting a significant rain event for the WCB--- by that we mean a widespread textbook 2-4"/50-100mm rain event over the WCB with 75 - 80% coverage.

Instead our forecast a fairly moderate but it's also a tricky because even a 1-2"/ 25-50mm rain event over the WCB would be the best rain those areas have seen in several weeks.

The pattern change is going to get underway after August 20 and we should move into a warmer weather pattern with the last 10 days of August featuring a fairly strong ridge across the Deep South and lower plains and POSSIBLE "ring of fire thunderstorms" across the Dakotas and portions of the Midwest into the Great Lakes.

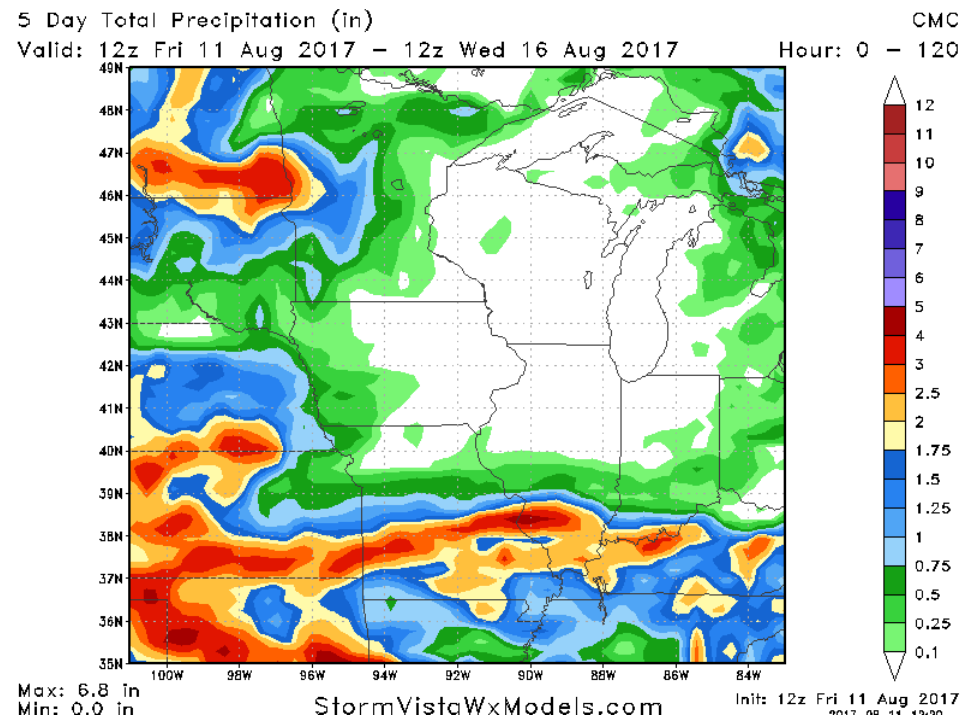
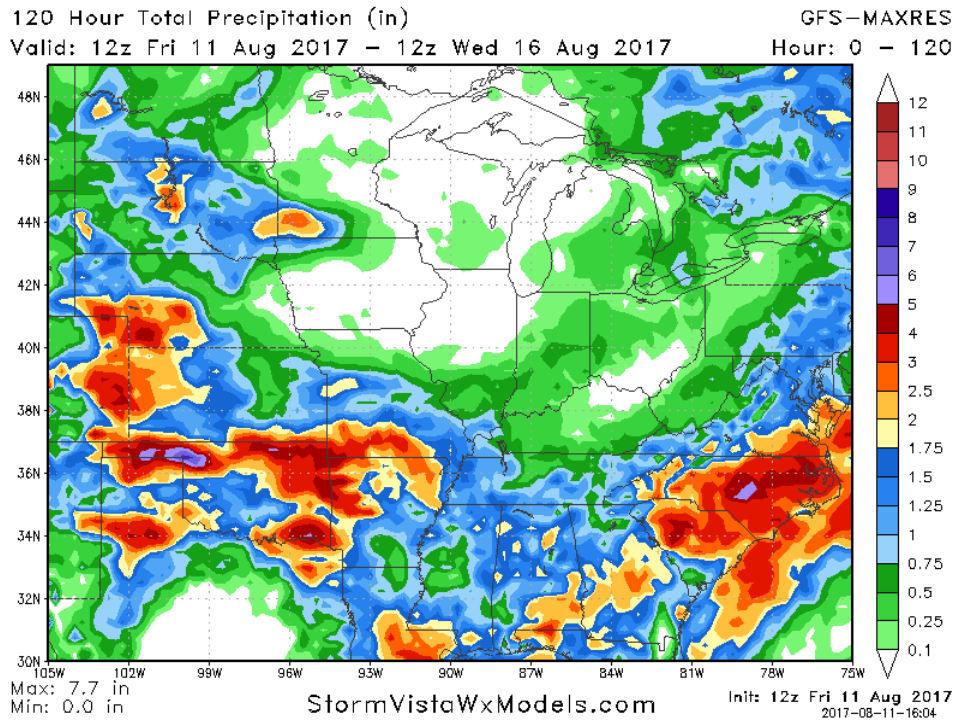
There has also been a lot of talk about the potential for a frost in early September. The temperatures will remain cool if the European extended models and the CFS BUT if there is in fact a significant ridge developing over the Deep South as we move into September that would prevent any sort of early season cold air outbreak. This discrepancy between what the climate models are showing on what the Extended daily weather models are showing for the end of August and beginning of September will have to be watched and resolved by next week. This is not one of the situations where you can take a compromise. If we end up getting a strong ridge in the jet stream over the Deep South and we are not going to have early frost during the first week or 10 days of September.

[FAST LOADING RADAR](#)

The midday radar shows heavy storms over central and northeastern Oklahoma and then moderate rain showers over southeastern Missouri far southern Illinois Southwest Indiana. There are additional showers and storms over Southern Tennessee Western North Carolina Southwest Virginia.. A 3rd area of moderate showers and some weak storms can be found over Eastern Ontario Canada in around Lake Superior Lake Erie and Lake Ontario and over far northeastern Ohio and Northwest Pennsylvania

1-5 DAY

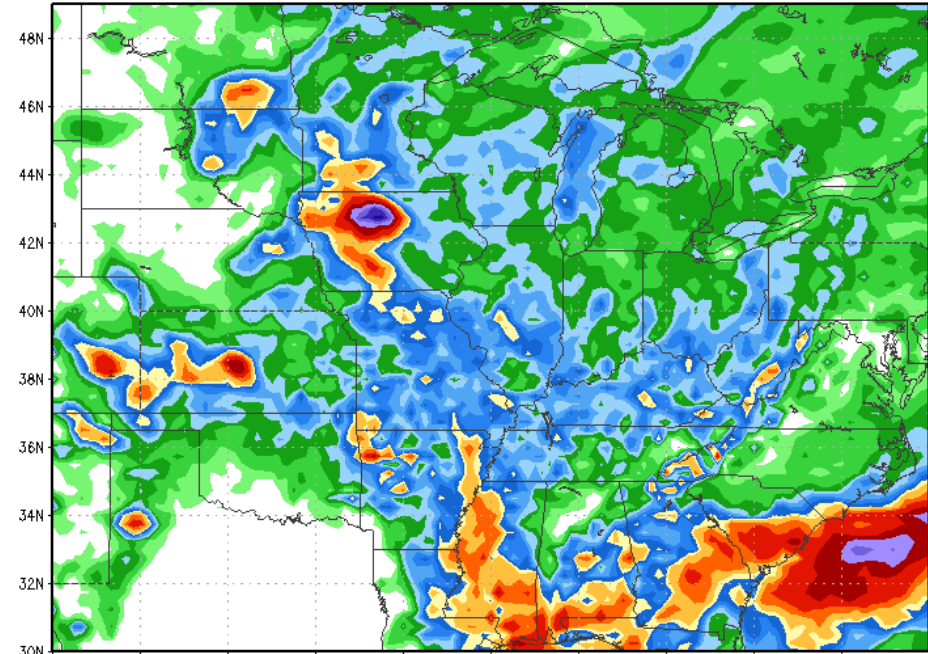
The midday Canadian and GFS models have not change significantly over the next 5 days. As you can see all of Ohio Indiana Illinois most of Iowa most of Minnesota and Wisconsin are completely dry all the next 5 days although both models to show showers and storms moving into southwest Minnesota and the eastern Dakotas and central Nebraska next Monday and Tuesday. Note again the significant rains as the models are forecasting for Western Kansas 80% of Oklahoma 80% of the Texas panhandle 70% of Louisiana and Arkansas. Rainfall amounts in these areas will range from 2-5"/ 50-125mm and 1-3"/ 25-75mm h rains across all of the Gulf coast into the Carolinas and Southeast Virginia



DAYS 6 - 10 DAY

This image is the early morning 6 to 10 day based on the data came out around 1:00 AM Friday morning. Notice that the Canadian is pretty dry over Nebraska Iowa Illinois and Missouri. Even the GFS which has a bull's eye of the 9 inch rains in North Central Iowa also shows large gaps the rainfall coverage....

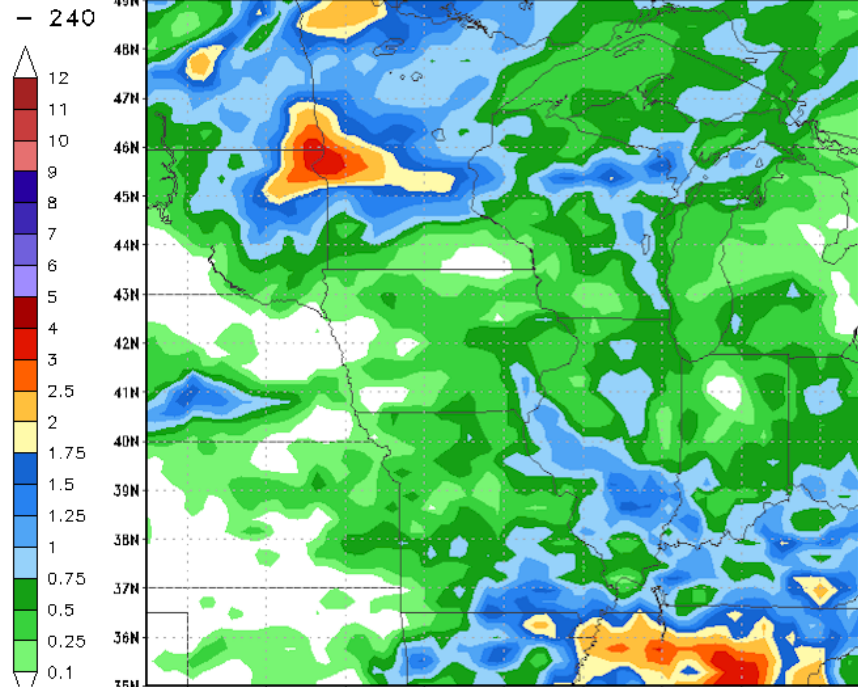
120 Hour Total Precipitation (in)
 Valid: 00z Wed 16 Aug 2017 - 00z Mon 21 Aug 2017 Hour: 120 - 240



Max: 8.3 in
 Min: 0.0 in

5 Day Total Precipitation (in)
 Valid: 00z Wed 16 Aug 2017 - 00z Mon 21 Aug 2017

GFS-MAXRES 00z Wed 16 Aug 2017 - 00z Mon 21 Aug 2017 Hour: 120 - 240



Max: 9 in
 Min: 0.0 in

StormVistaWxModels.com

Init: 00z Fri 11 Aug 2017
 2017-08-11-00:32

The second image is the updated 6 to 10 day from Friday afternoon and we can see the GFS model shows that it coverage was less gaps the rainfall shield. Notice that 80% of Missouri Illinois Western Wisconsin Minnesota and 70% of Iowa sees 0.75 to 2 inch rains with a few isolated heavier amounts. Additional moderate to significant rains extend into Western Tennessee Kentucky and the deep south. Th the Canadian model is substantially wetter with only Northwest Iowa missing out on the rains.

120 Hour Total Precipitation (in)

Valid: 12z Wed 16 Aug 2017 - 12z Mon 21 Aug 2017

GFS-MAXRES

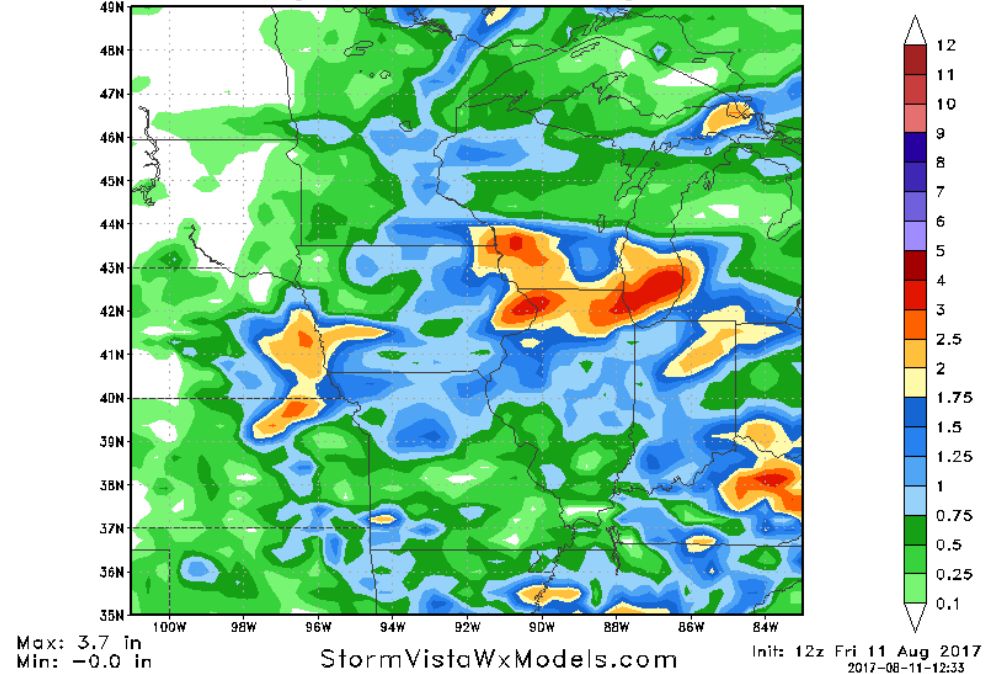
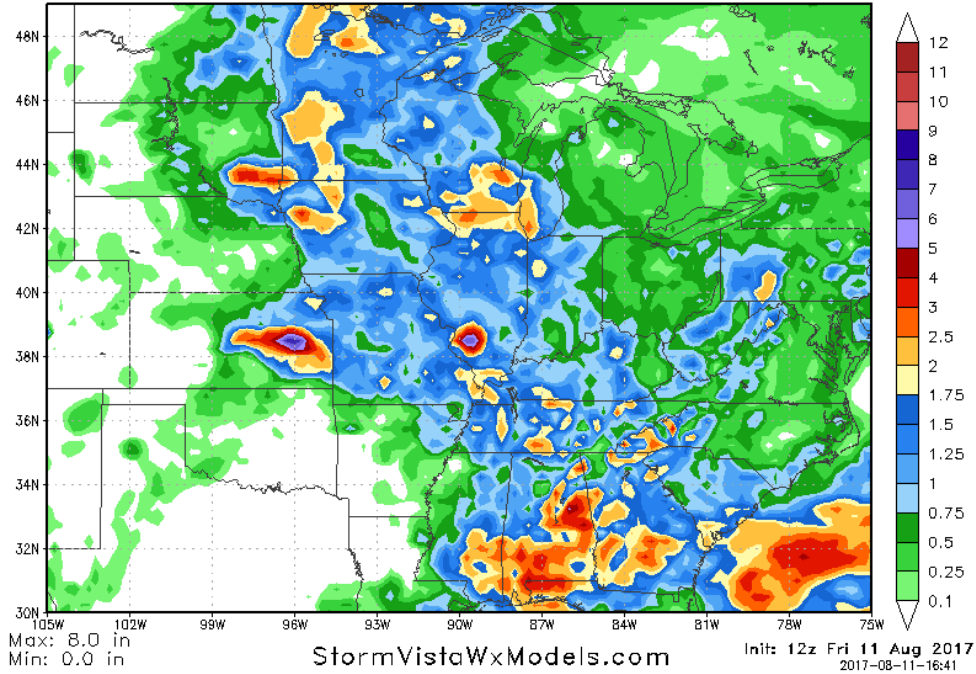
Hour: 120 - 240

5 Day Total Precipitation (in)

Valid: 12z Wed 16 Aug 2017 - 12z Mon 21 Aug 2017

CMC

Hour: 120 - 240



Next we can compare the ensembles from early this morning and at midday. This next image is showing the 6-10day ensemble from the GFS and the Canadian models from early Friday morning.

120 Hour Total Precipitation (in)

Valid: 00z Wed 16 Aug 2017 - 00z Mon 21 Aug 2017

GFS-ENS-MAXRES

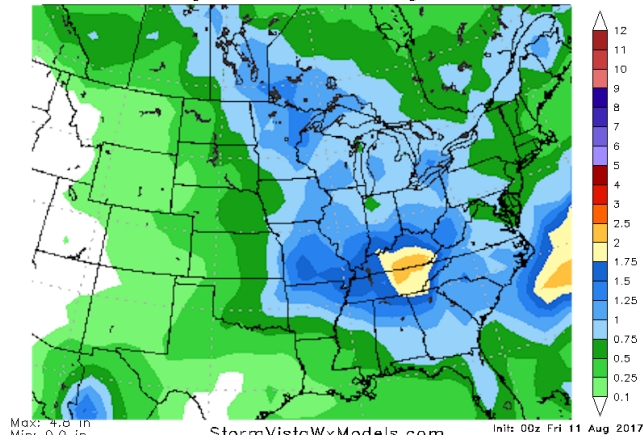
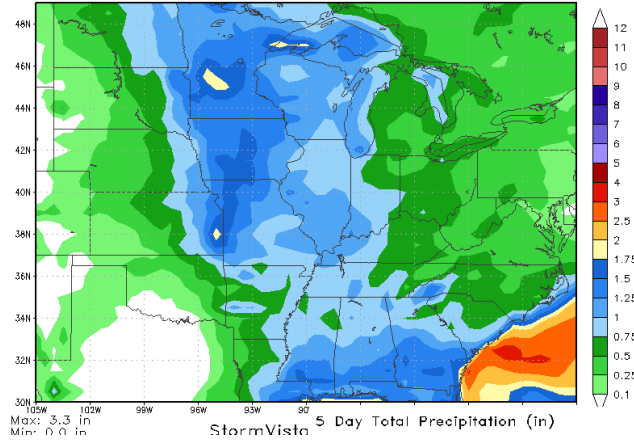
Hour: 120 - 240

5 Day Total Precipitation (in)

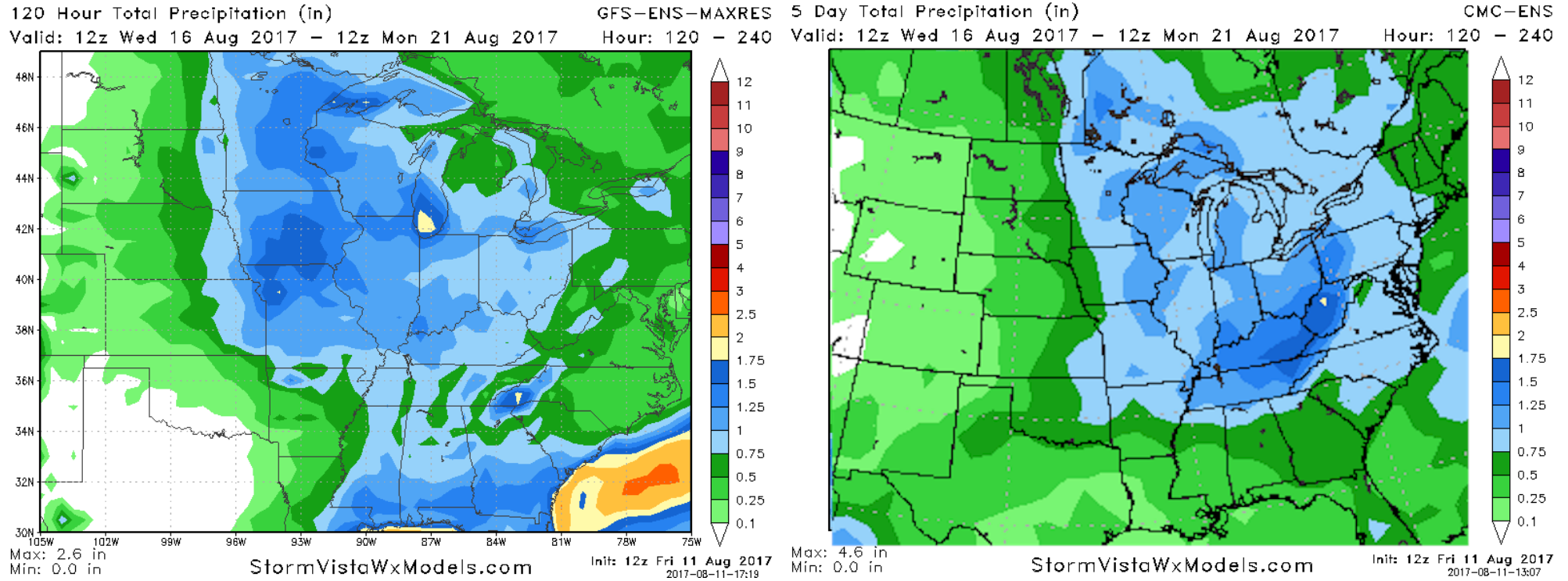
Valid: 00z Wed 16 Aug 2017 - 00z Mon 21 Aug 2017

CMC-ENS

Hour: 120 - 240



here is the updated or 12z GFS and Canadian models and they are just as wet ...if not wetter ... with the the coverage and amounts . The WCB sees around 70 to 75% with the amounts ranging from 1 to 2"/ 25-50mm with a few small areas somewhat higher



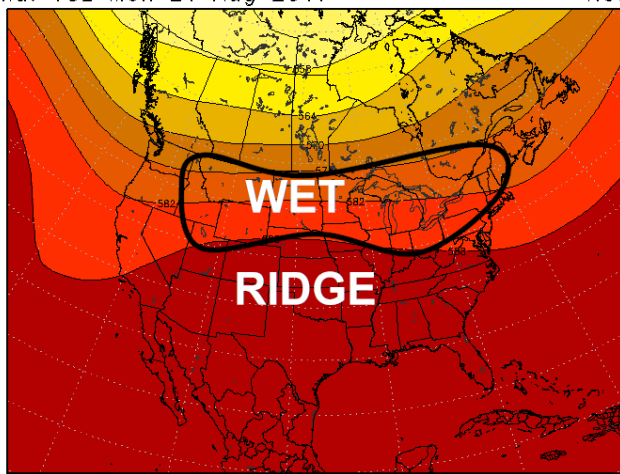
SUMMARY the rain coming up in late next week and into next weekend over the WCB is going to bring a Moderate rain event. The fact that the operational regular models turn wetter this afternoon is an encouraging sign and tells me that the ensemble are probably the correct way to forecast this event. We are not forecasting a ideal textbook 2-4"/ 50-100mm rain with 75 are 80% coverage over a Iowa or the WCB. But certainly a widespread 1- 2.5"/ 25-60mm rain seems possible with 60 to 70% coverage. This should be the best rain several weeks but it's not an ideal or textbook rain that would end the drought conditions in the Dakotas th or the WCB.

11-15 DAY

In the 11 to 15 day the GFS and the Canadians of actually increased the rains again over the WCB. This supports two overall pattern which seems to favor a return to more normal weather conditions.

This image is the European model from this morning VALID August 21 and August 25 . What is important to note here is the development of a strong RIDGE in the jet stream over the central and Lower Plains and the Deep South. A new surge in jet stream energy coming in from the Pacific Northwest wil track over the top of the ridge bringing the "ring of fire thunderstorms" to the Dakotas and potentially into Nebraska and the WCB. This is the typical pattern we see in July and early August. This is one of reasons WHY the CFS in week 3 and week 4 has turned wet.

500 mb Height
Valid: 18z Mon 21 Aug 2017

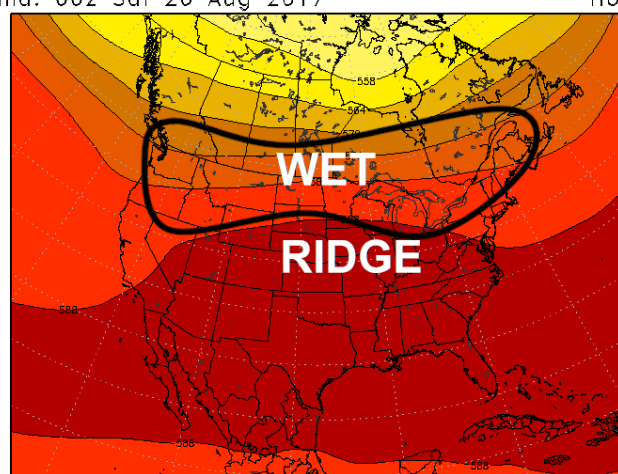


GRADS: COJA/IGES

StormVistaWxModels.com

Init: 00z Fri 11 Aug 2017
2017-08-11-03:43

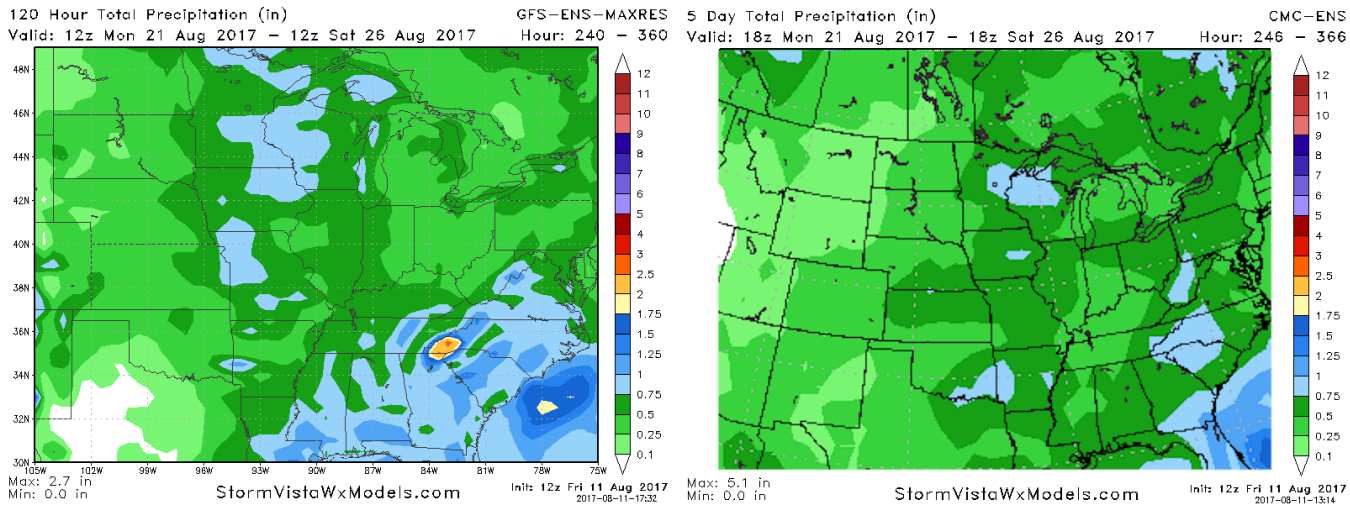
ECMWF-EPS 500 mb Height
Hour: 258 Valid: 00z Sat 26 Aug 2017



GRADS: COJA/IGES

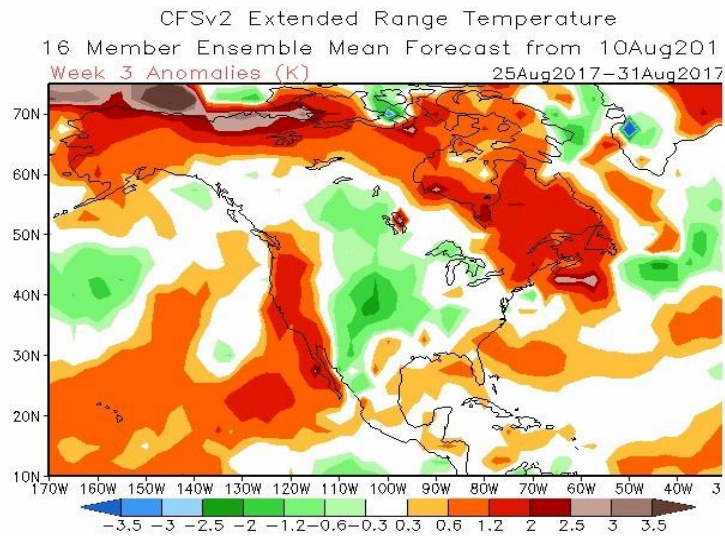
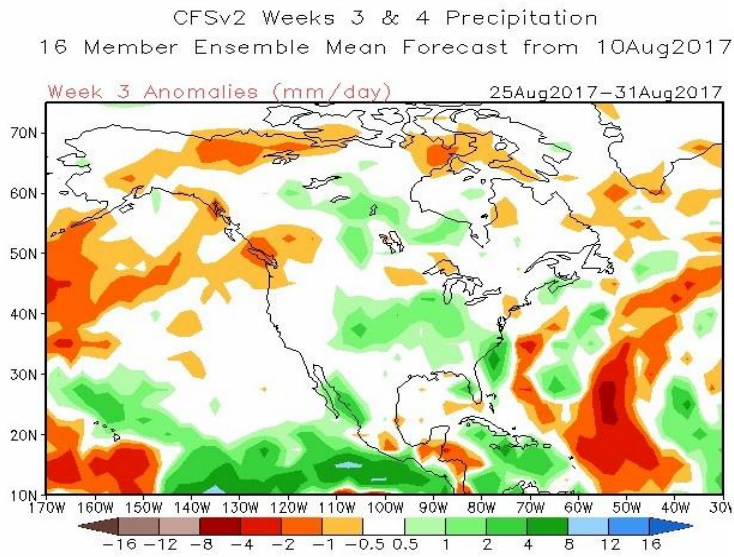
StormVistaWxModels.com

Init: 00z Fri 11 Aug 2017
2017-08-11-04:00

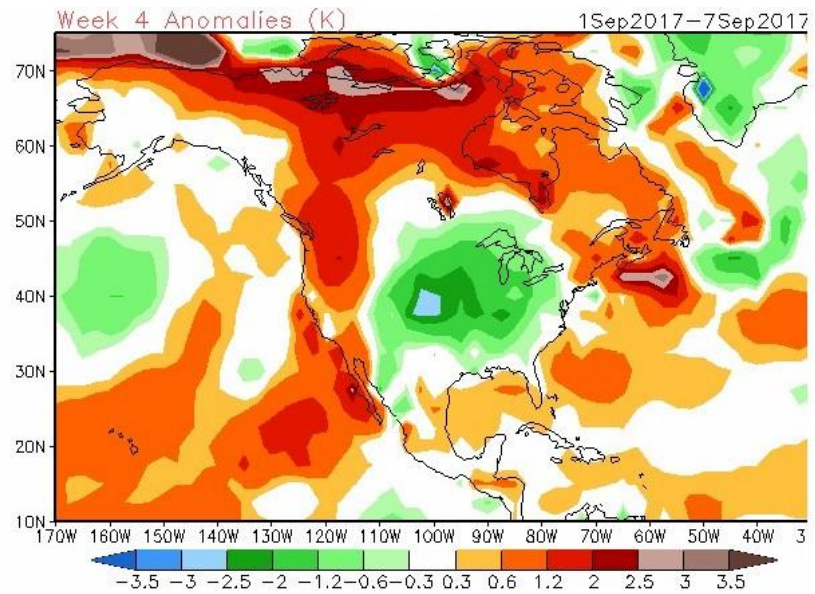
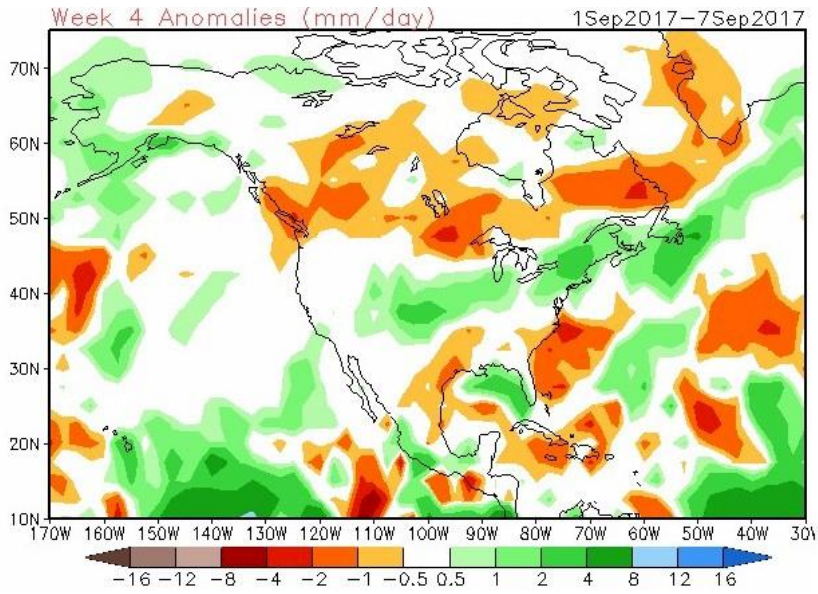


WEEK 3 and WEEK 4

The new week 3 and week 4 CFS models are out and as you can see they continue to show fairly wet pattern over most of the Midwest and central Plains in week 3 with below Normal temps over the Plains



Week 4 sees more of the same but the temps are colder..



DT wxrisk.com OFFICE 804 715 8330 CELL 804 307 8070