

US and OVERSEAS GRAIN WEATHER ISSUES

**as of FRIDAY
18 AUG 2017**



LOCATED in Richmond VA

Featured frequently on AGRI-MONEY

EMAIL WXRISK@VERZION .NET



@WXRISK.COM



<https://www.facebook.com/WxRisk>

wxrisk@gmail.com

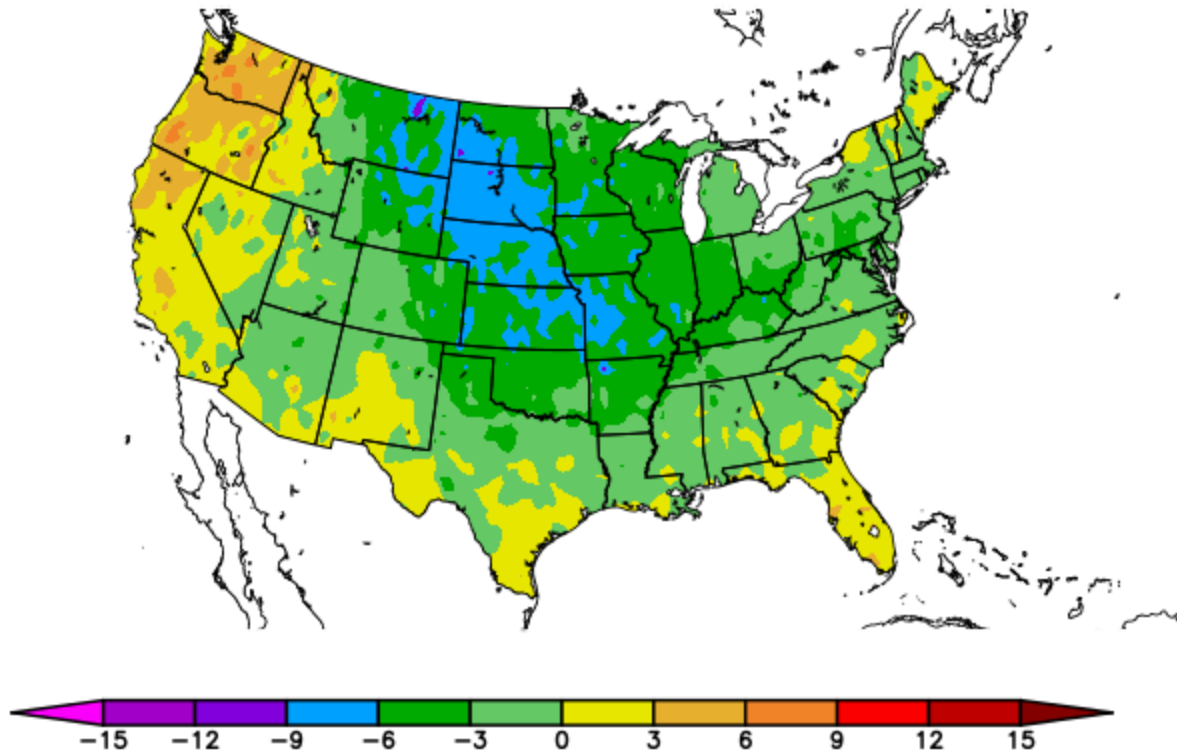


Who we are

WxRisk is a private, subscription, Weather Forecasting Company. Founded in 1998, the company specializes in providing the most detailed and accurate weather forecasts for Days 3 through 30, as well as seasonal forecasts, for Grain Traders, Farmers, Energy Traders, Construction companies, Oil and Heat associations, Wineries and other businesses impacted by weather. Geographic areas covered include, but are not limited to: The Middle Atlantic region of the U.S., all of the Continental U.S., South America, Europe, Ukraine/Southern and western Russia, Kazakhstan, India, Australia & China. Current and previous clients include large and mid-size commodity trading houses, energy firms, gas and propane companies, ski resorts, individual farmers and business involved in providing transportation and construction services throughout the world.

notice strong Negative TEMP ANOMALIES 2 WEEKS AGO

Departure from Normal Temperature (F)
8/3/2017 - 8/16/2017

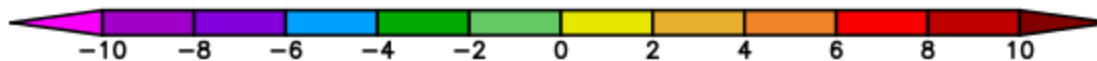
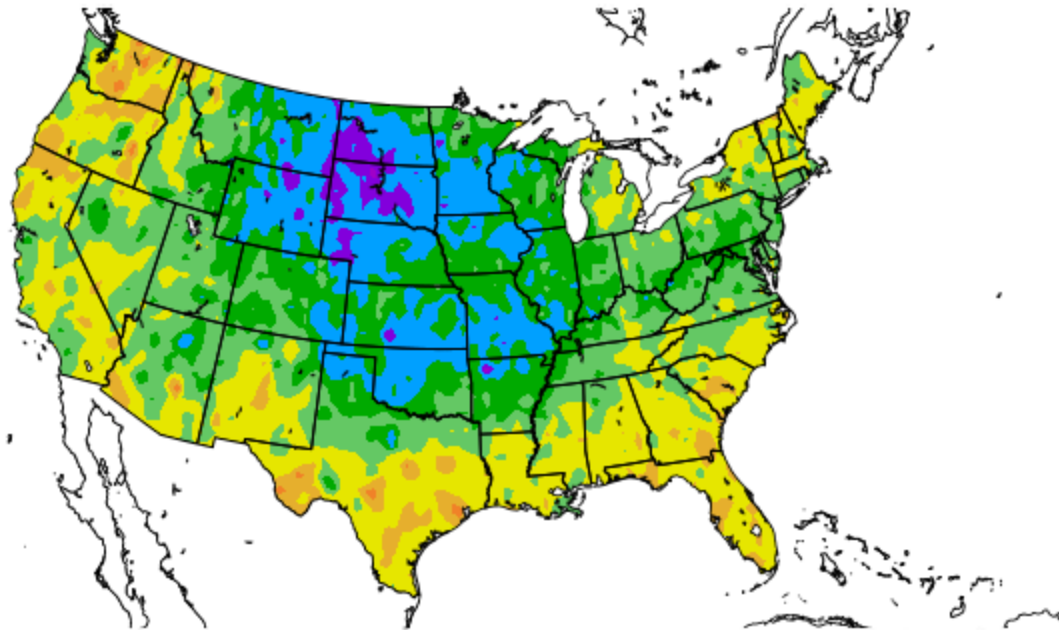


Generated 8/17/2017 at HPRCC using provisional data.

NOAA Regional Climate Centers

TEMP ANOMALIES LAST 7 DAYS.. Now much cooler

Departure from Normal Temperature (F)
8/10/2017 - 8/16/2017



Generated 8/17/2017 at HPRCC using provisional data.

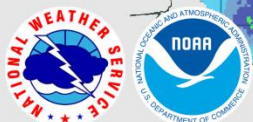
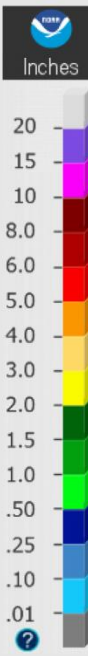
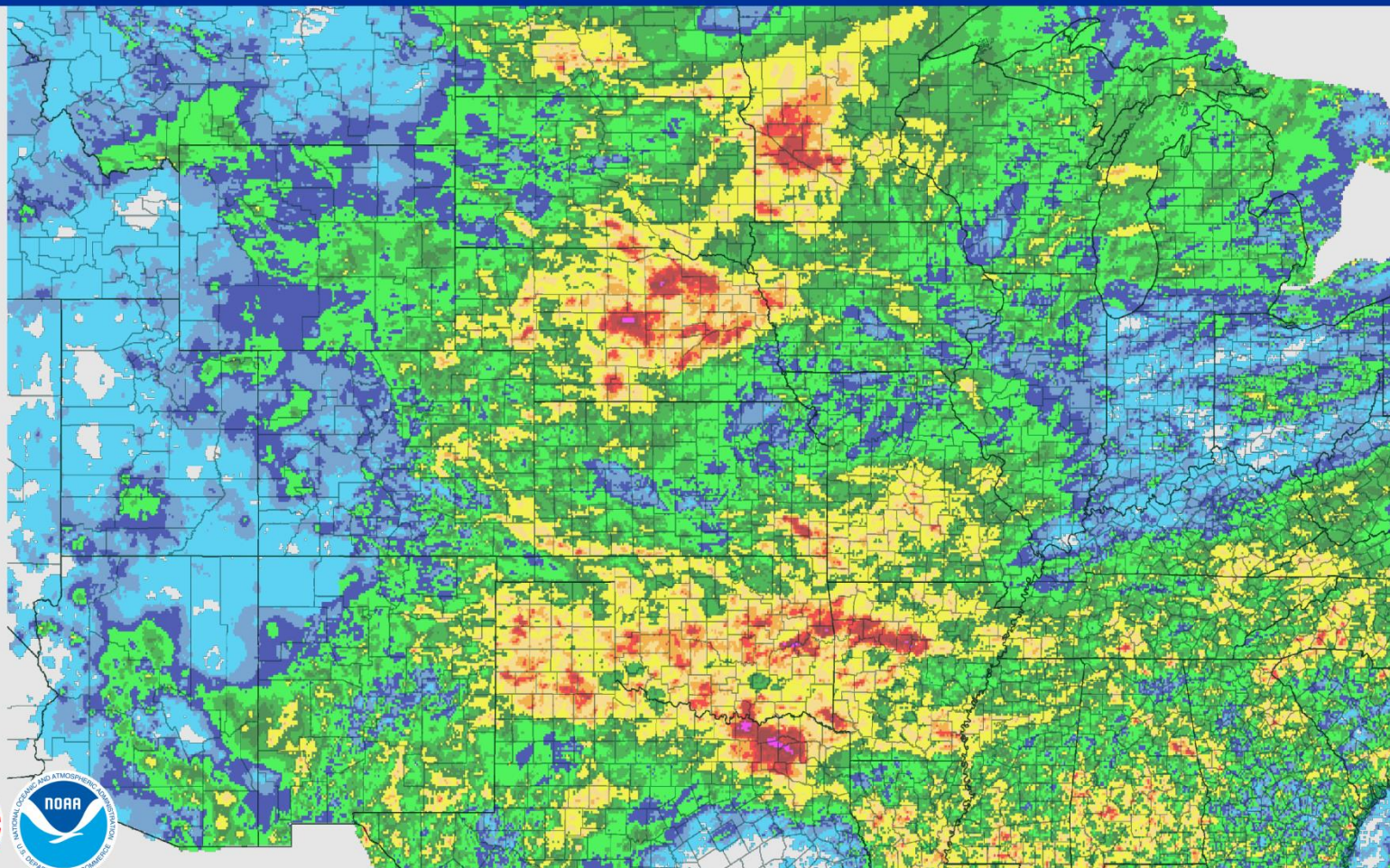
NOAA Regional Climate Centers

RAINFALL PAST 7 DAYS— several areas 2-7"/ 50-175mm over MN central/ ne NEB Much of OK Tx Panhandle ARK sw MO... DRY over eastern third IA ILL IND OH KY

August 17, 2017 7-Day Observed Precipitation

Created on: August 18, 2017 - 05:59 UTC

Valid on: August 17, 2017 12:00 UTC

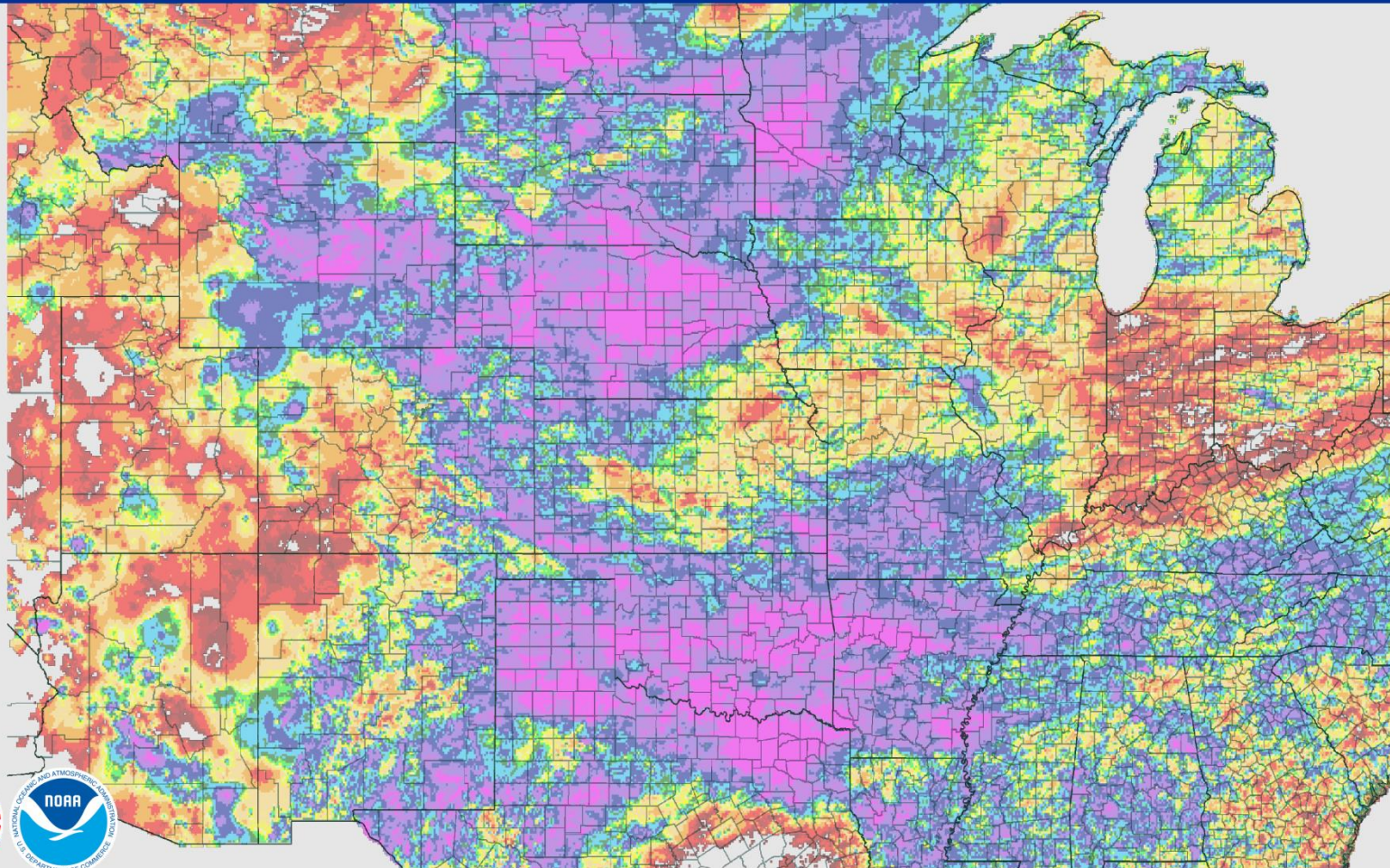


PRECIP ANOMALIES PAST 7D- 300-600% of Normal = ND west MN far southern SD most of NEB east WY OK Tx Panhandle ARK sw MO

August 17, 2017 7-Day Percent Precipitation

Created on: August 18, 2017 - 06:00 UTC

Valid on: August 17, 2017 12:00 UTC

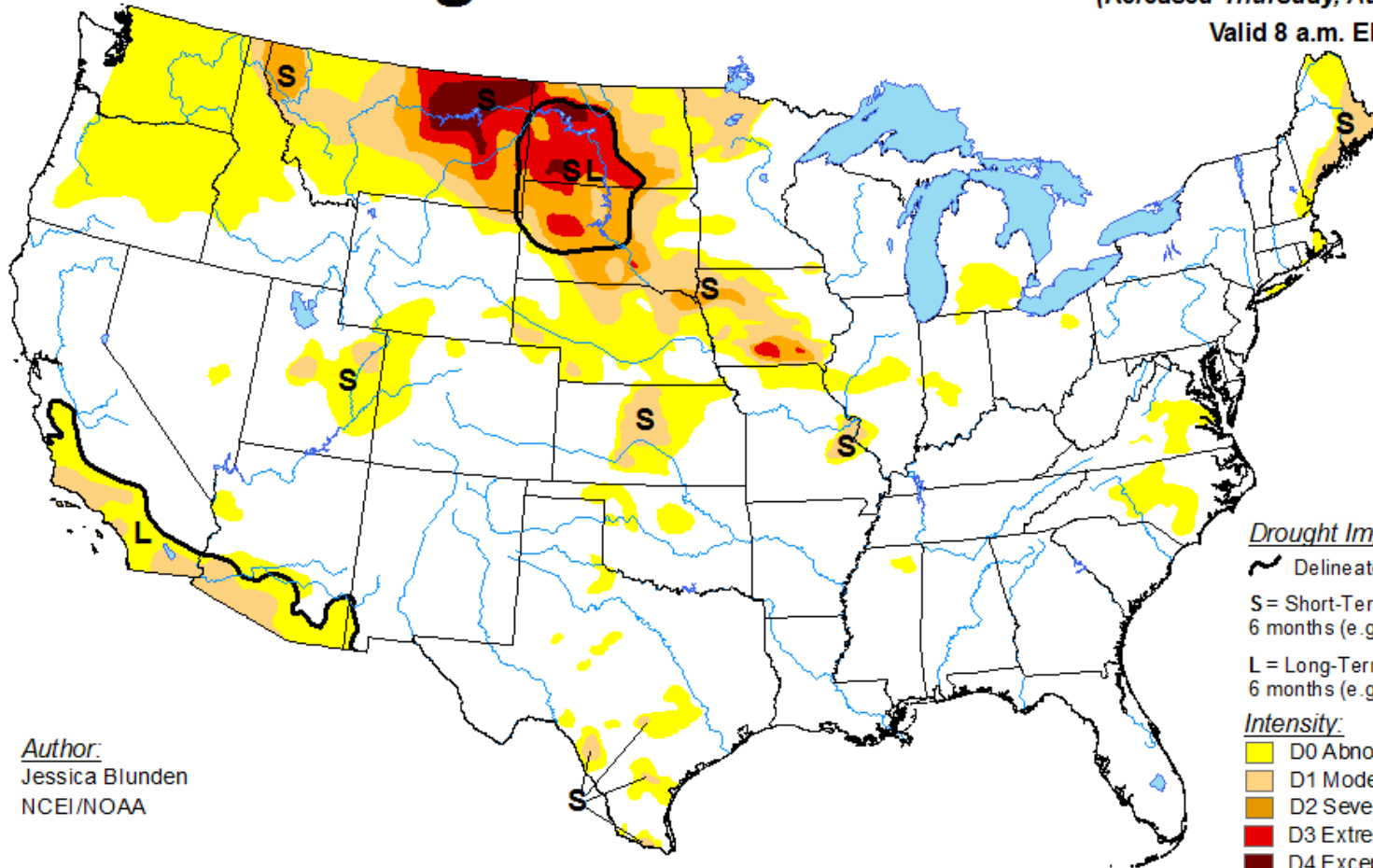


U.S. Drought Monitor


August 15, 2017

(Released Thursday, Aug. 17, 2017)






Valid 8 a.m. EDT



Drought Impact Types:

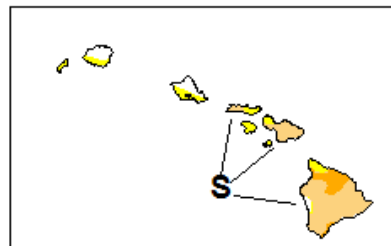
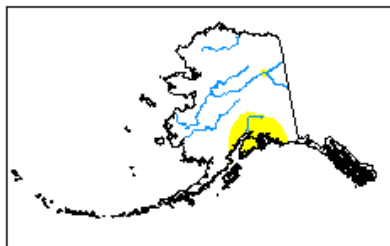
-  Delineates dominant impacts
- S = Short-Term, typically less than 6 months (e.g. agriculture, grasslands)
- L = Long-Term, typically greater than 6 months (e.g. hydrology, ecology)

Intensity:

-  D0 Abnormally Dry
-  D1 Moderate Drought
-  D2 Severe Drought
-  D3 Extreme Drought
-  D4 Exceptional Drought

The Drought Monitor focuses on broad-scale conditions. Local conditions may vary. See accompanying text summary for forecast statements.

Author:
Jessica Blunden
NCEI/NOAA

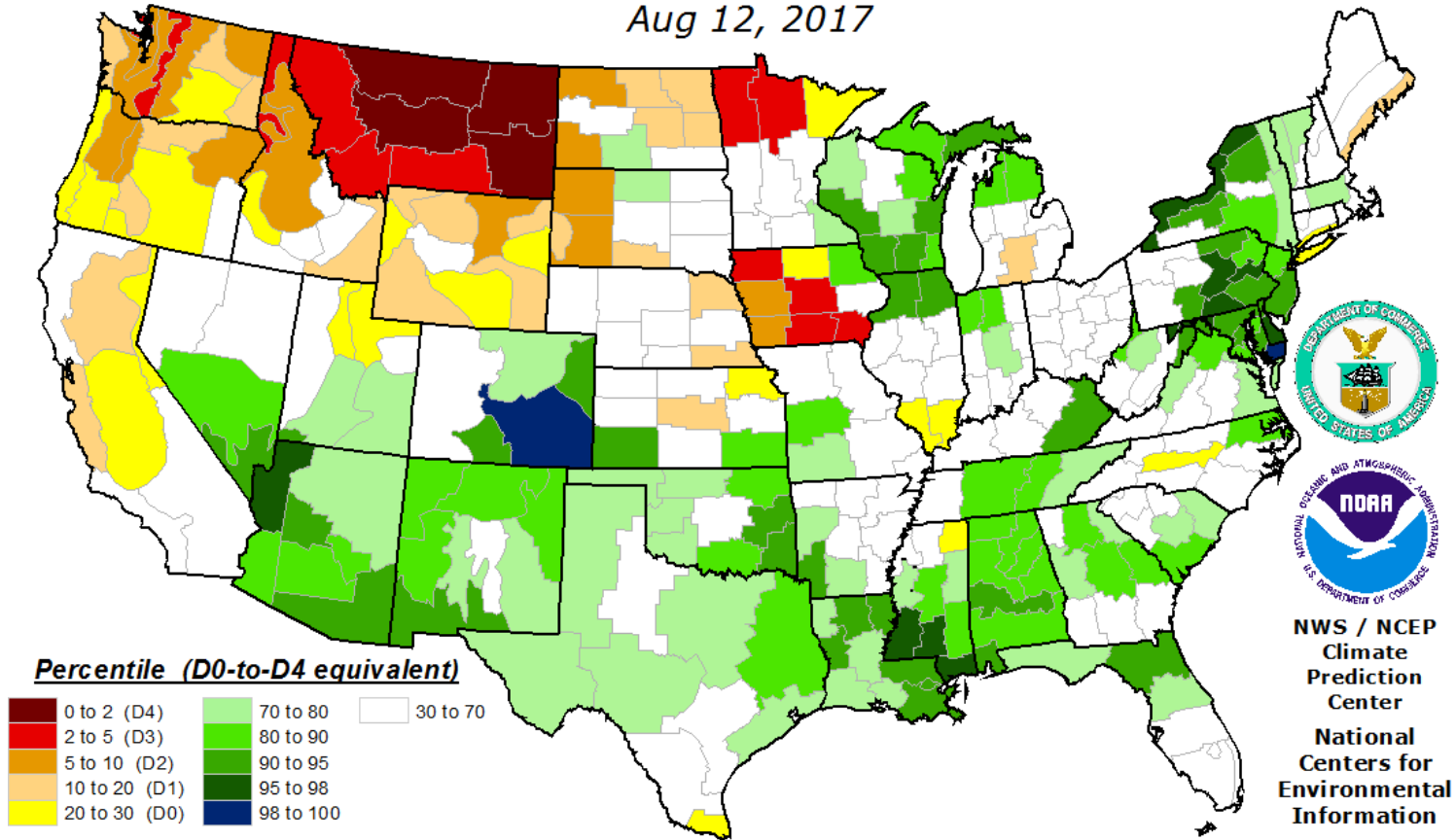


<http://droughtmonitor.unl.edu/>

Last 4 weeks DRYNESS increasing over MT IA western Dakotas IA Moisture increasing COL OK TX LA MS AL ILL WI PA MD NY

Objective Short-Term Drought Indicator Blend Percentiles

Aug 12, 2017



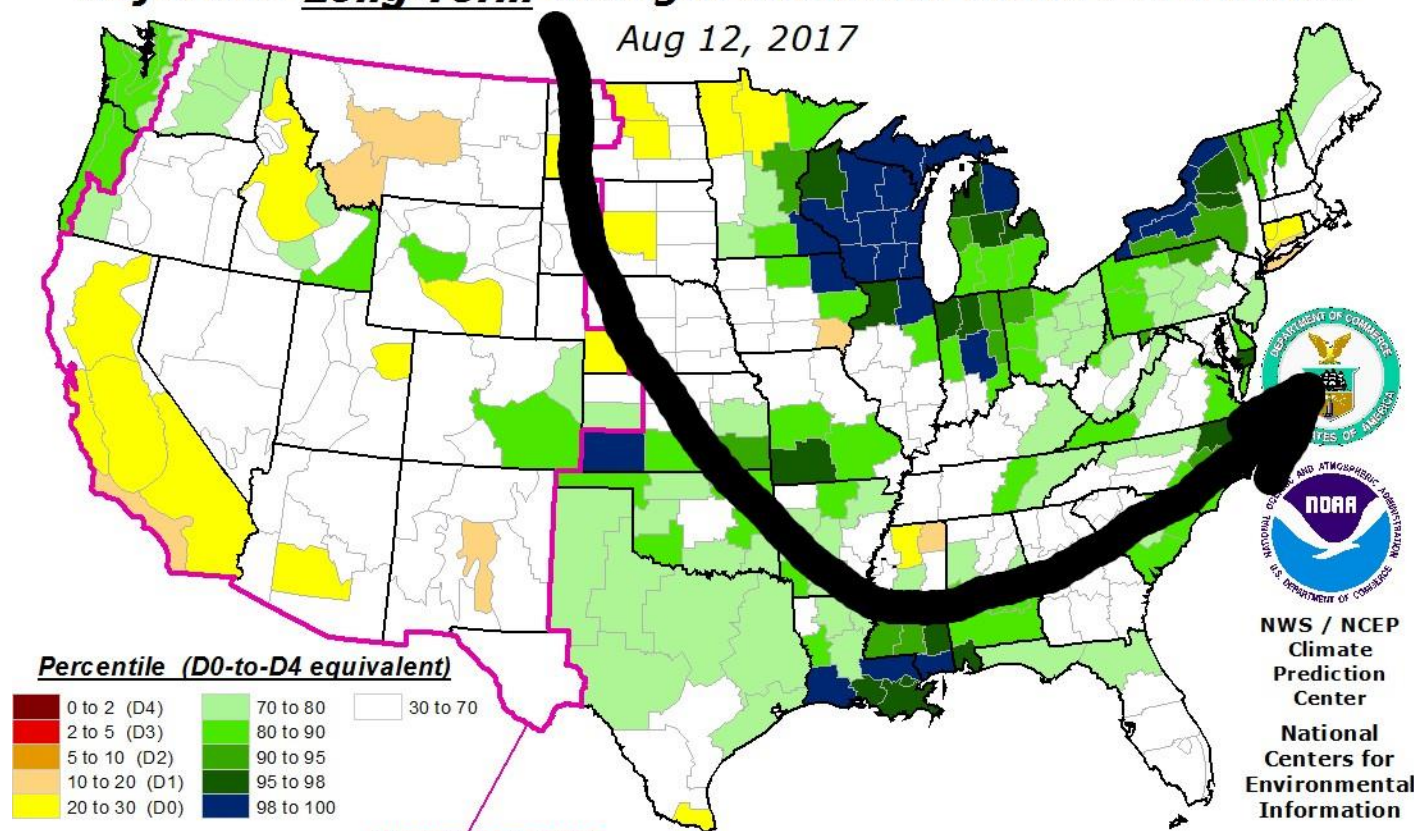
This map approximates impacts that respond to precipitation over several days to a few months, such as agriculture, topsoil moisture, unregulated streamflows, and most aspects of wildfire danger. The relationship between indicators and impacts can vary significantly with location and season. Do not interpret this map too literally.

This map is based on preliminary climate division data. Local conditions and/or final data may differ. See the detailed product suite description for more details.

Last 4 Months saturated ground over Midwest into Delta = mean trough in Jet stream is favored to stay here . . . Making cold air outbreak in SEPT more impressive leading to FROST SCARES

Objective Long-Term Drought Indicator Blend Percentiles

Aug 12, 2017



Percentile (D0-to-D4 equivalent)



Inputs (as percentiles):

- 25% Palmer Hydrologic Index
- 20% 24-Month Precipitation
- 20% 12-Month Precipitation
- 15% 6-Month Precipitation
- 10% 60-Month Precipitation
- 10% CPC Soil Moisture Model

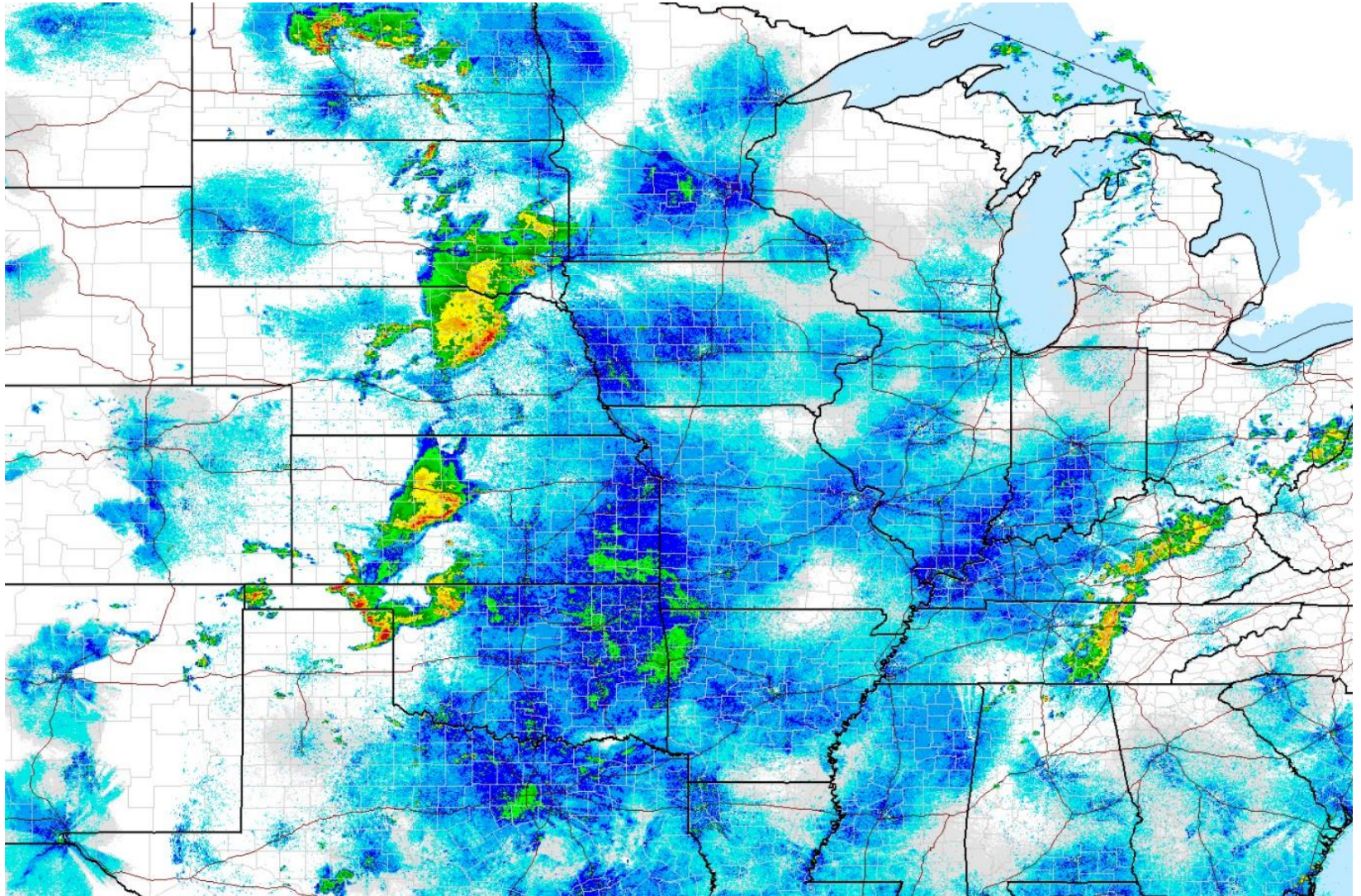
Western Formulation Inputs (as percentiles):

- 30% Palmer Hydrologic Index
- 30% 60-Month Average Z-Index
- 10% 60-Month Precipitation
- 10% 24-Month Precipitation
- 10% 12-Month Precipitation
- 10% CPC Soil Moisture Model

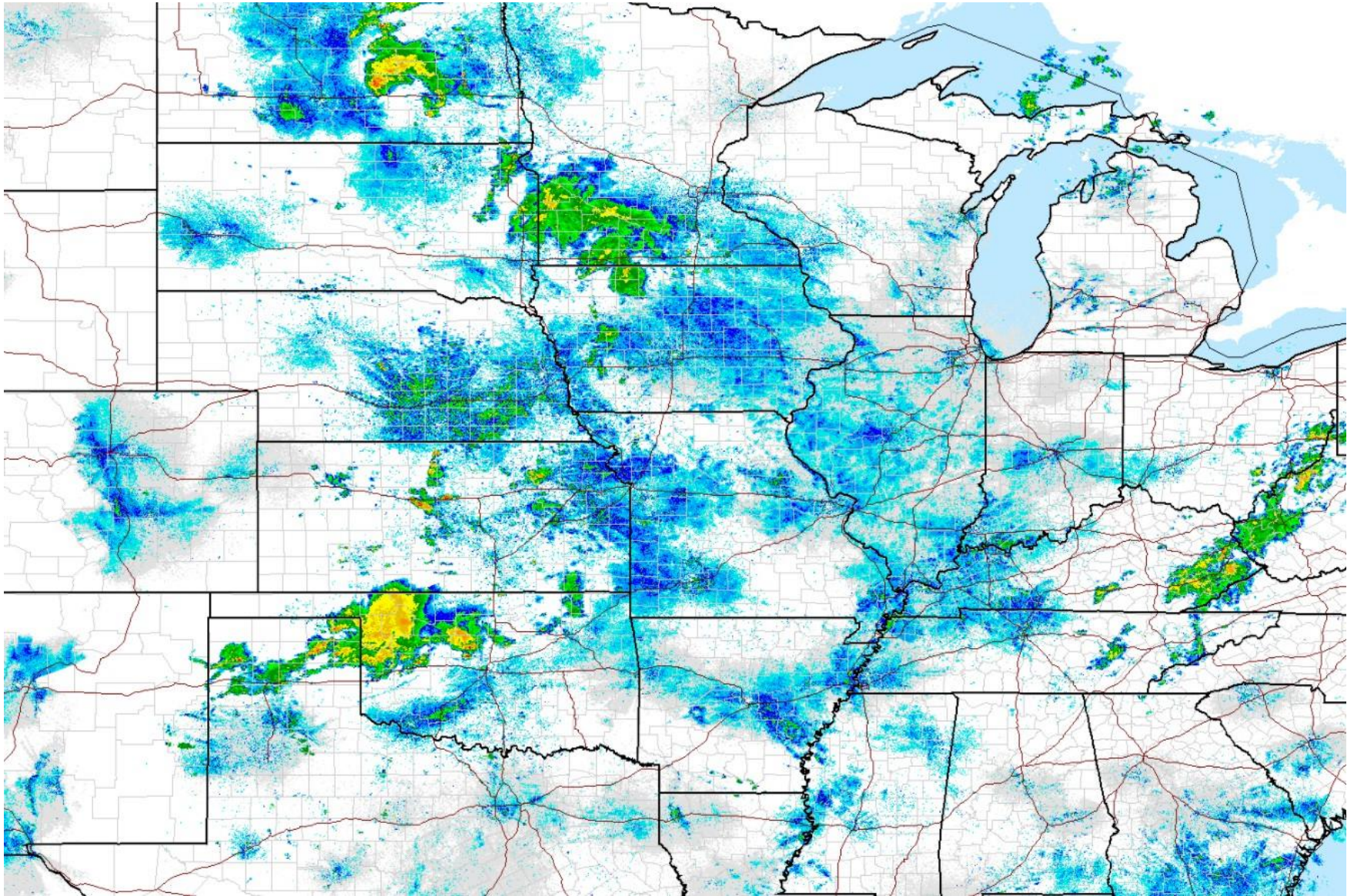
This map approximates impacts responding to precipitation over the course of several months to a few years, such as reservoir content, groundwater, and lake levels. **HOWEVER, THE RELATIONSHIP BETWEEN INDICATORS AND WATER SUPPLIES CAN VARY MARKEDLY WITH LOCATION, SEASON, SOURCE, AND MANAGEMENT PRACTICE.** Do not interpret this map too literally.

This map is based on preliminary climate division data. Local conditions and/or final data may differ. See the detailed product suite description for more details.

RADAR 12 AM FRIDAY



RADAR 7AM CDT FRIDAY

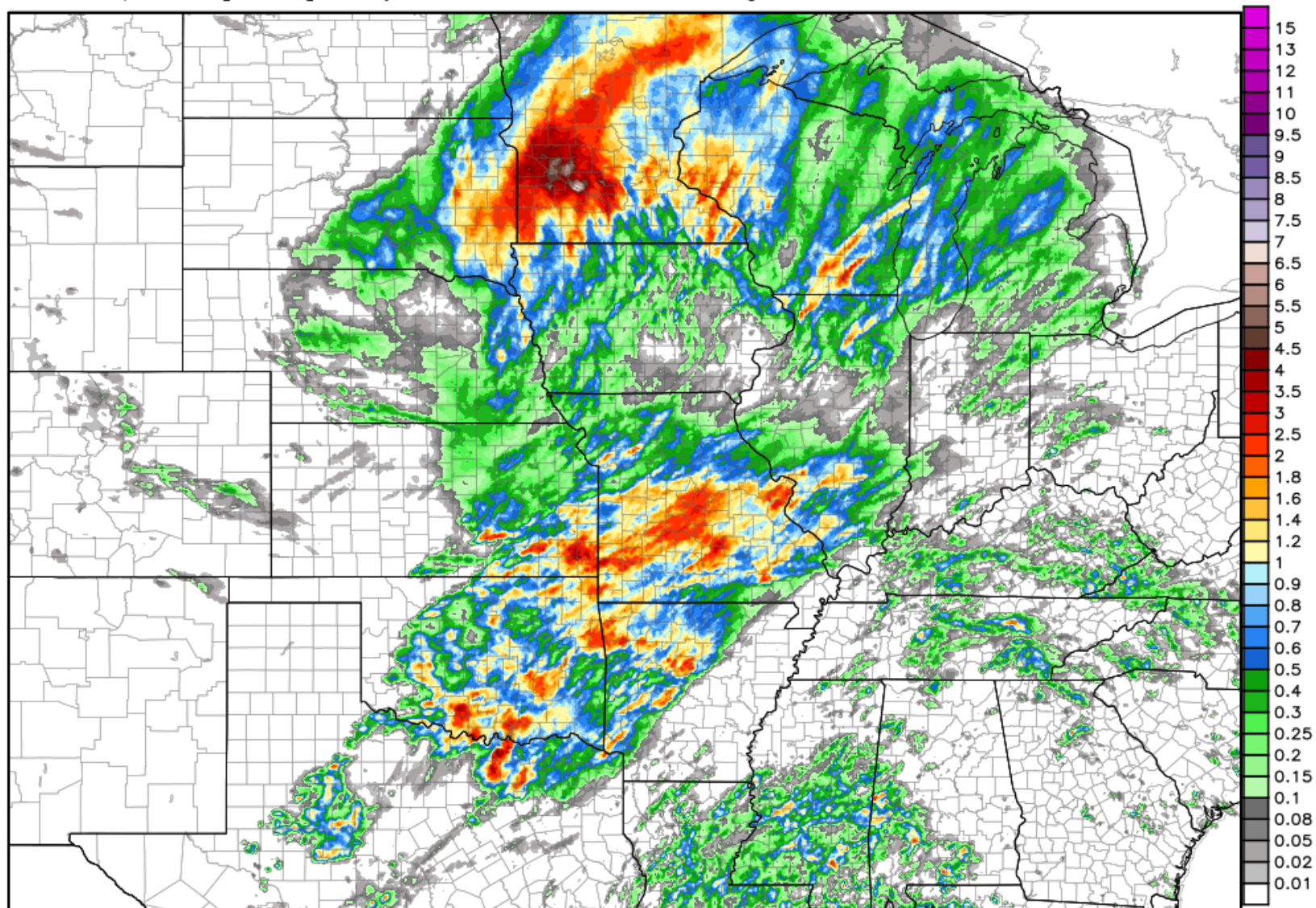


RAINFALL AS OF AUGUST 17

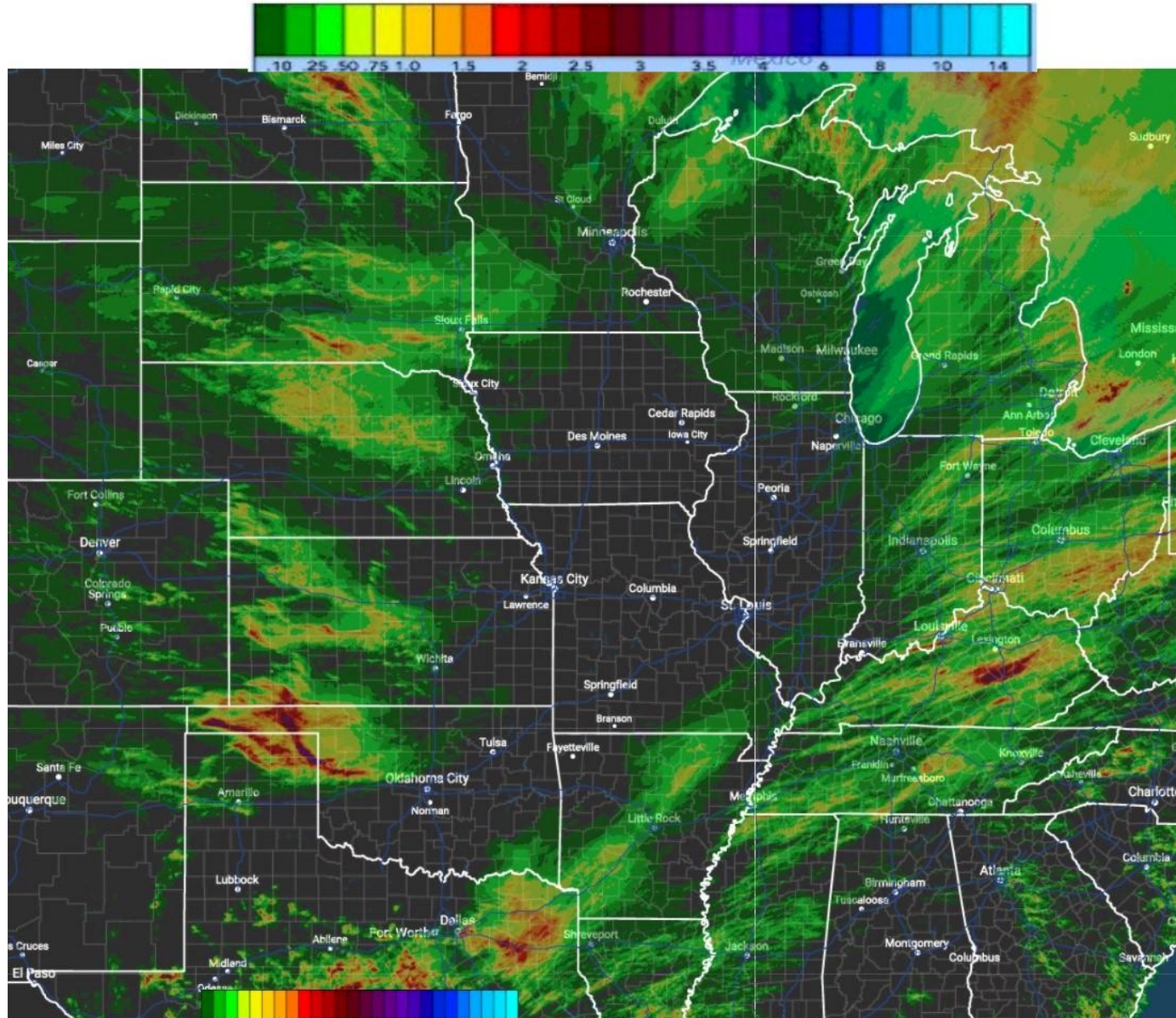
NWS Precipitation Analysis 4-km HRAP Grid -- 1-day Total Accumulation

Domain Max: 7.6 in.

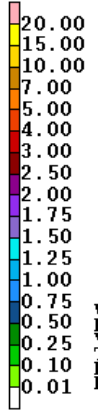
Total Precipitation [inches] 1 days 12Z16AUG2017 --> through --> 12Z17AUG2017



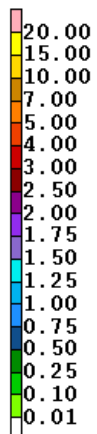
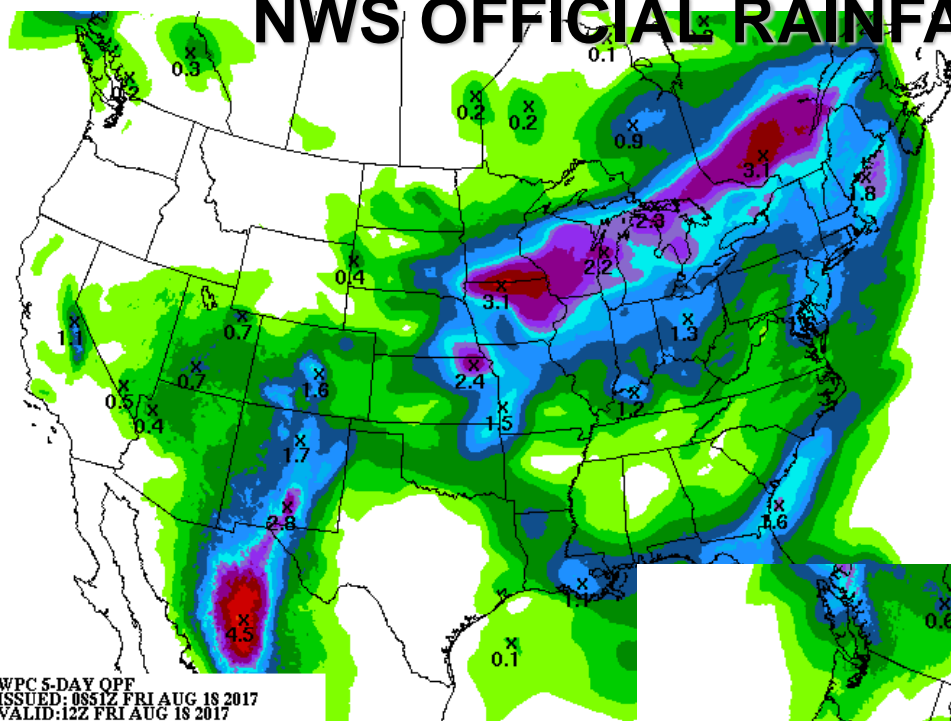
RAINFALL AS OF AUGUST 18



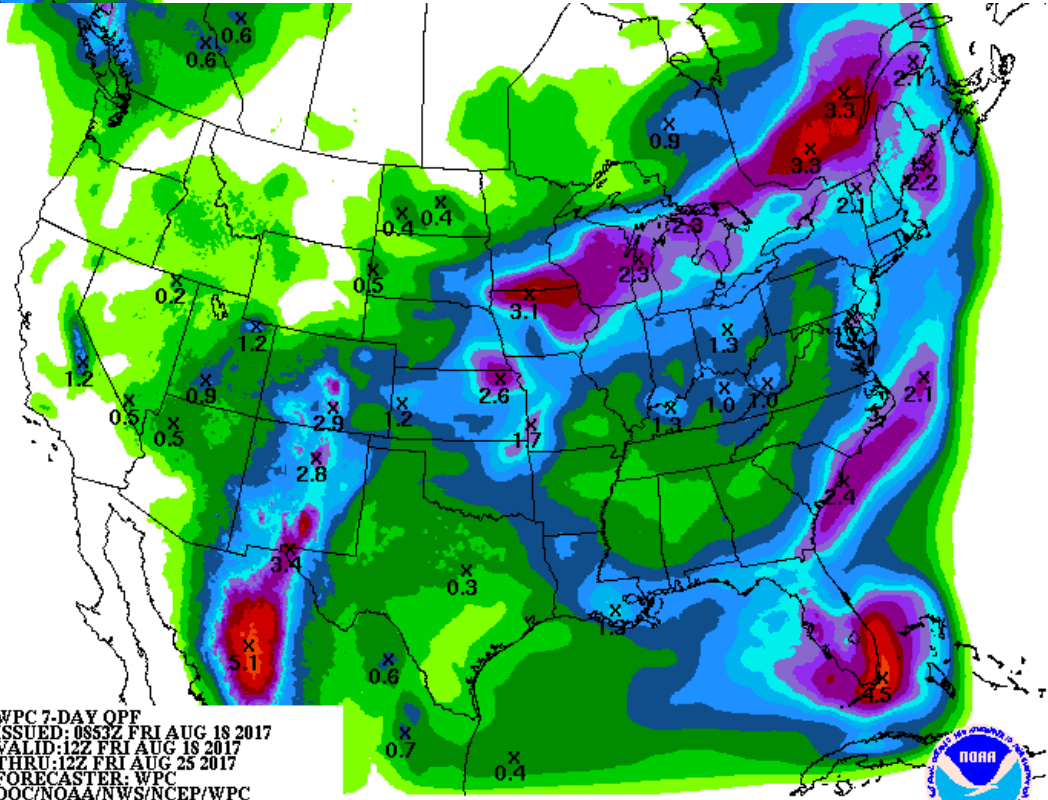
NWS OFFICIAL RAINFALL NEXT 5/7 DAYS



WPC 5-DAY QPF
 ISSUED: 0851Z FRI AUG 18 2017
 VALID: 12Z FRI AUG 18 2017
 THRU: 12Z WED AUG 23 2017
 FORECASTER: WPC
 DOC/NOAA/NWS/NCEP/WPC

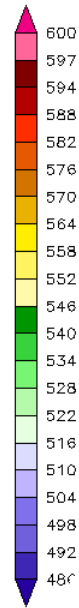
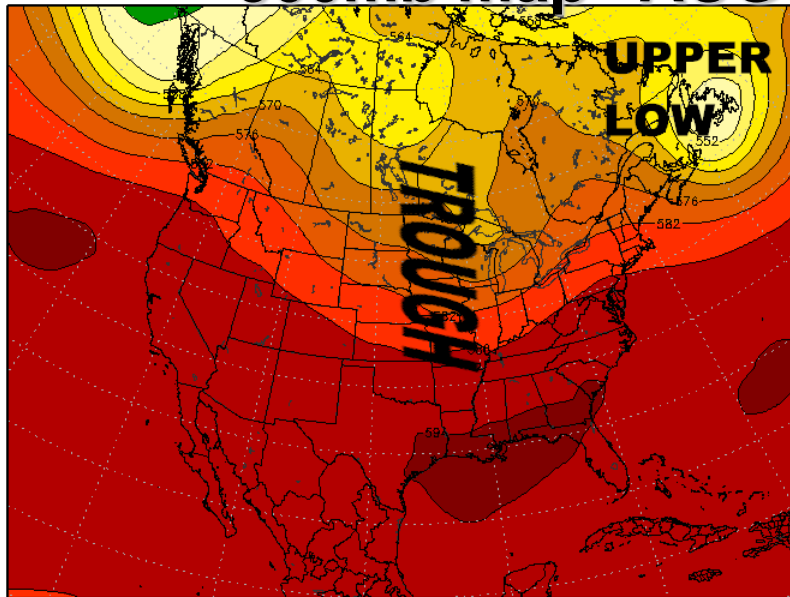


WPC 7-DAY QPF
 ISSUED: 0853Z FRI AUG 18 2017
 VALID: 12Z FRI AUG 18 2017
 THRU: 12Z FRI AUG 25 2017
 FORECASTER: WPC
 DOC/NOAA/NWS/NCEP/WPC



500 mb Height
Valid: 03z Fri 18 Aug 2017

500mb map AUGUST 18 & AUGUST 22



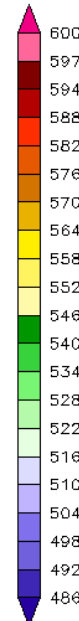
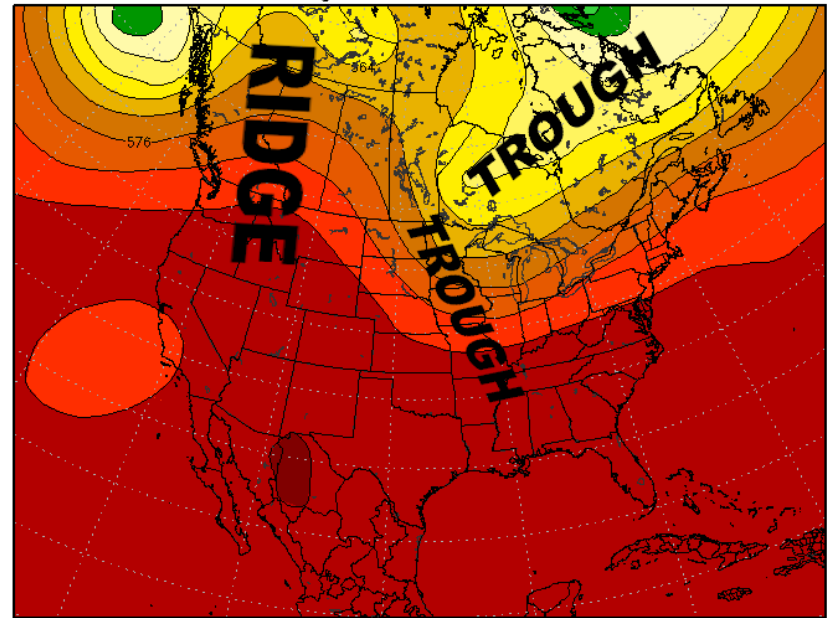
GRADS: COLA/IGES

StormVistaWxModels.com

Init: 00z Fri 18 Aug 2017-08-18-01:41

500 mb Height
Valid: 18z Tue 22 Aug 2017

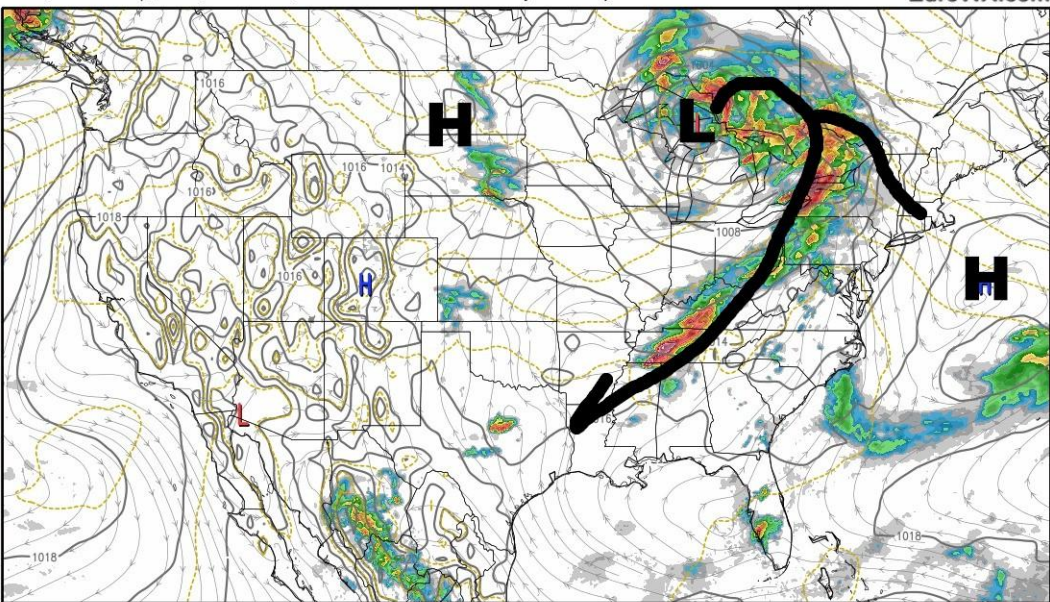
ECMWF
Hour: 114



GRADS: COLA/IGES

StormVistaWxModels.com

Init: 00z Fri 18 Aug 2017-08-18-02:19



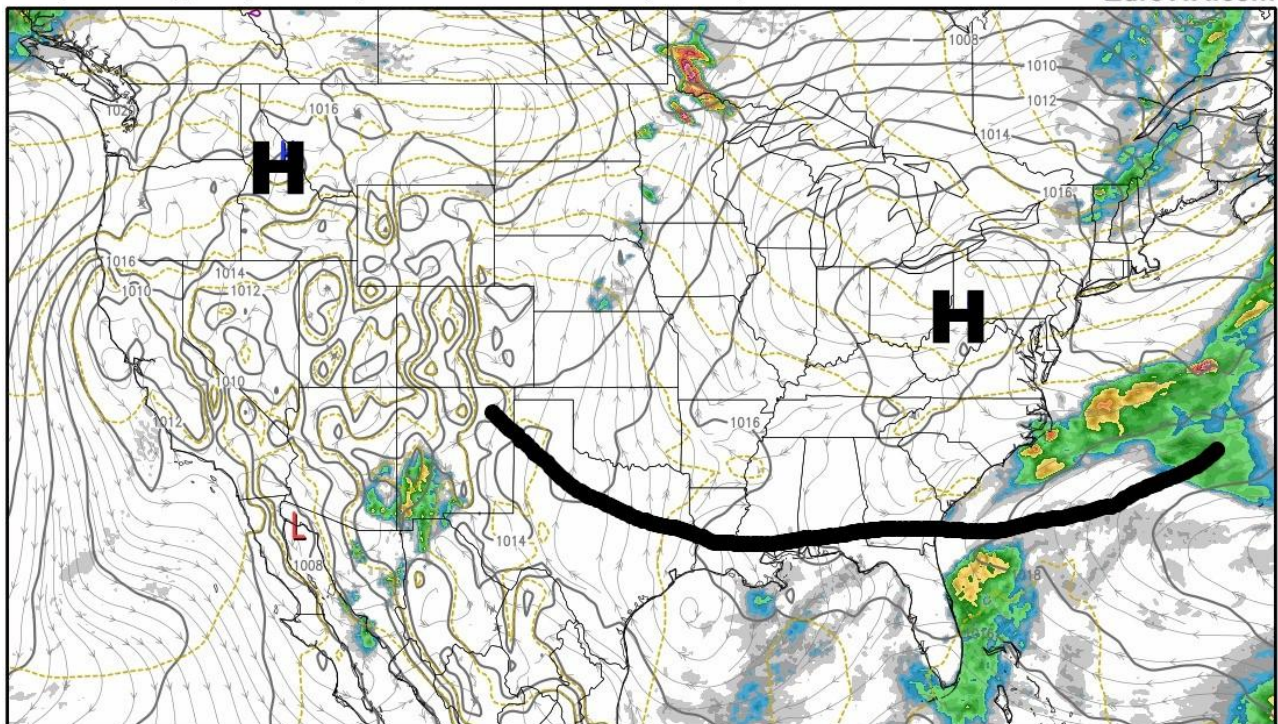
**In SURFACE map next
60 hrs... big HIGH
dominates Plains/
Midwest .. Some
warning Sunday over
Plains**



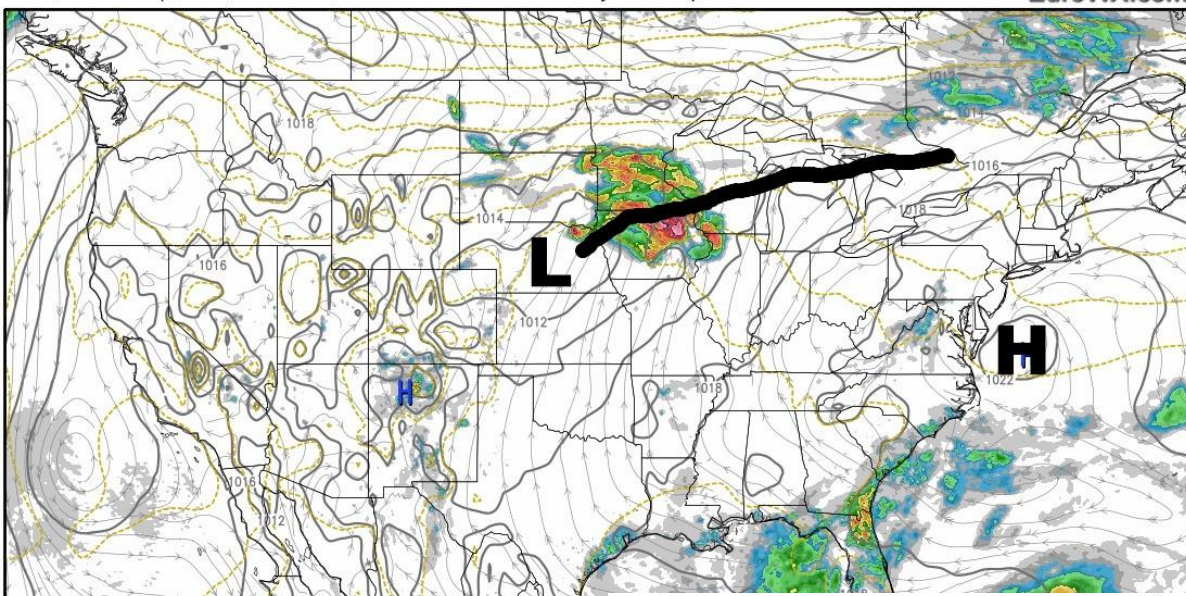
ECMWF HRES MODEL RUN 00Z 08/18 6hr FORECAST
This service is based on data and products of the European Center for Medium-range Weather Forecasts

MSLP, 6hr Precip, Wind, Thickness, 32f

Valid Sunday 12Z 08/20

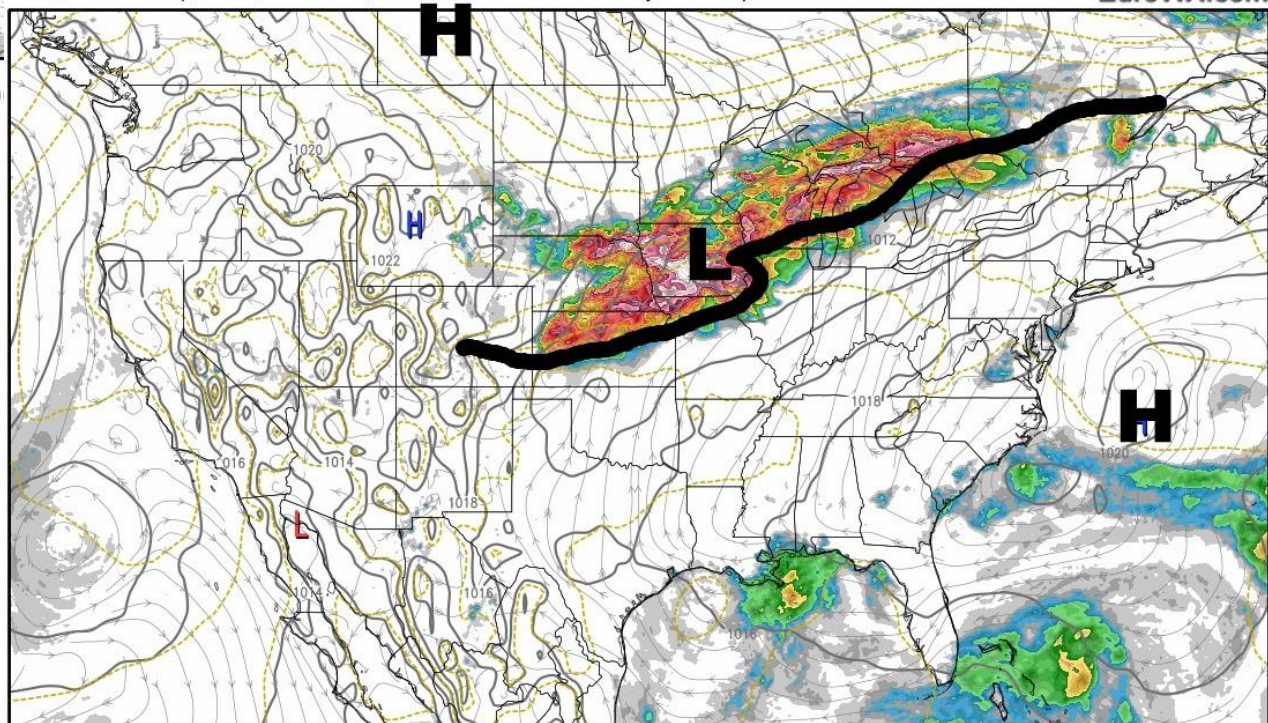


ECMWF HRES MODEL RUN 00Z 08/18 60hr FORECAST
This service is based on data and products of the European Center for Medium-range Weather Forecasts



strong cold front AUG22-23 bring heavy rains to Midwest

ECMWF HRES MODEL RUN 00Z 08/18 90hr FORECAST
 This service is based on data and products of the European Center for Medium-range Weather Forecasts.



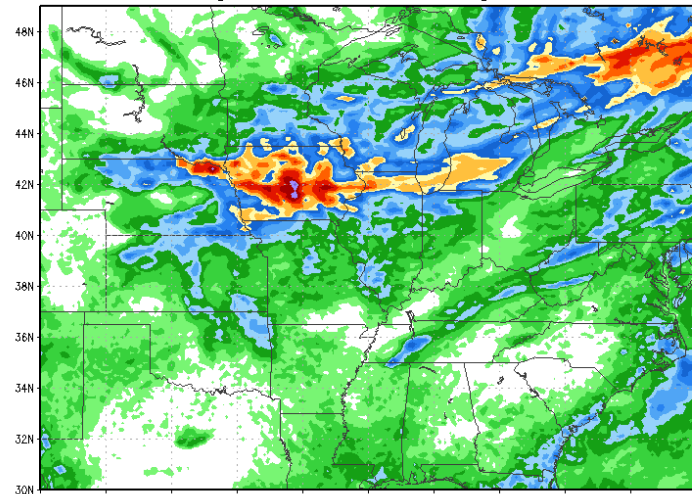
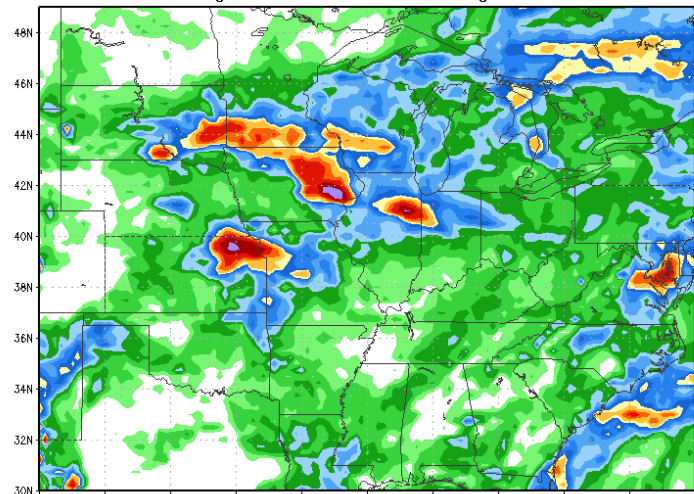
NEXT 5 DAYS GFS LEFT EURO RIGHT CANADIAN LOWER

120 Hour Total Precipitation (in)
Valid: 00z Fri 18 Aug 2017 - 00z Wed 23 Aug 2017

GFS-MAXRES
Hour: 0 - 120

120 Hour Total Precipitation (in)
Valid: 00z Fri 18 Aug 2017 - 00z Wed 23 Aug 2017

ECMWF-MAXRES
Hour: 0 - 120

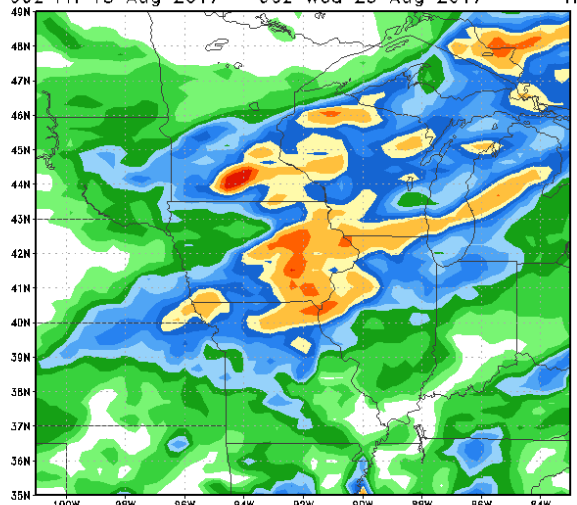


Max: 5.8 in
Min: 0.0 in

StormVistaWxM 5 Day Total Precipitation (in)
Valid: 00z Fri 18 Aug 2017 - 00z Wed 23 Aug 2017

CMC models.com
Hour: 0 - 120

Init: 00z Fri 18 Aug 2017
2017-08-18-06:20



Max: 3.9 in
Min: 0.0 in

StormVistaWxModels.com

Init: 00z Fri 18 Aug 2017

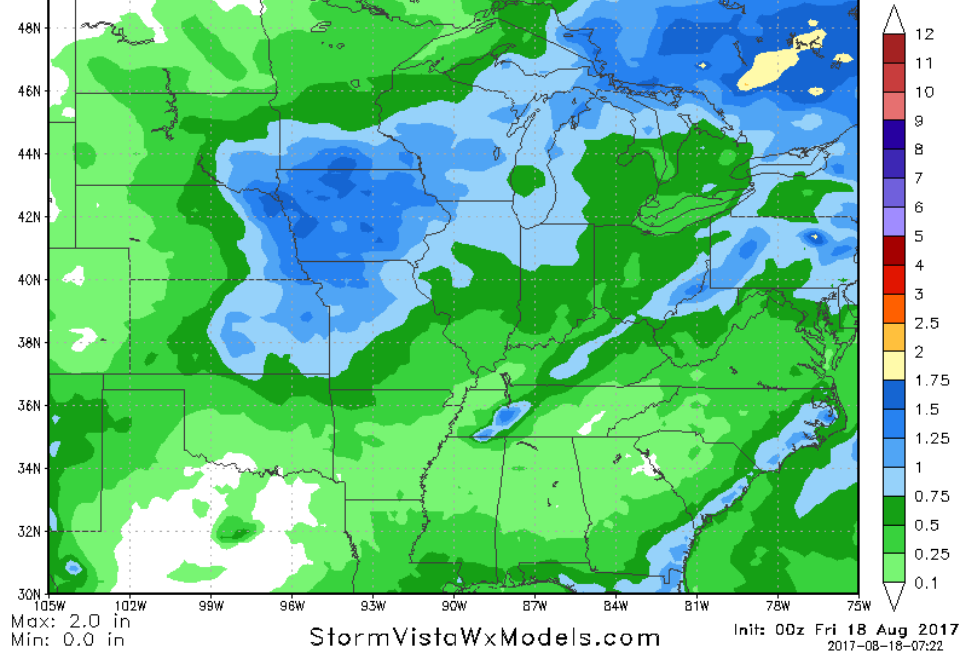
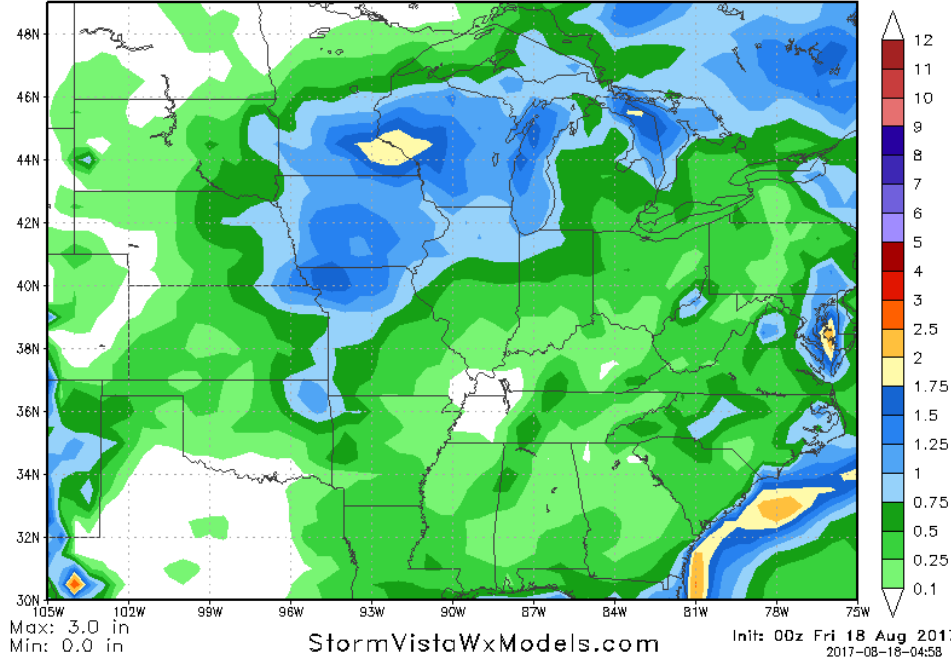
1-2.5"/ 25-60mm over WCB

120 Hour Total Precipitation (in)
Valid: 00z Fri 18 Aug 2017 - 00z Wed 23 Aug 2017

GFS-ENS-MAXRES
Hour: 0 - 120

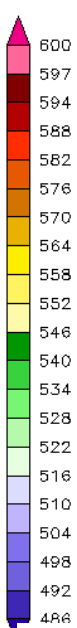
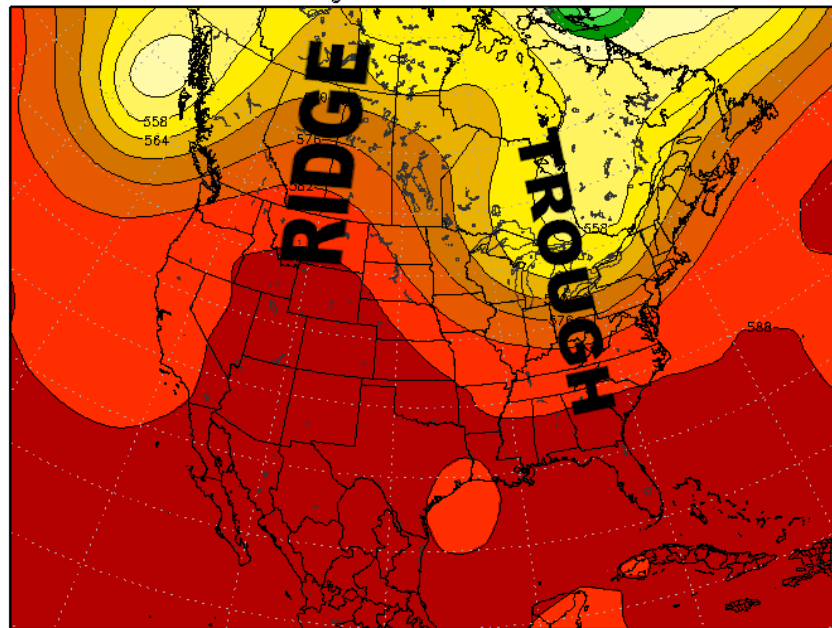
120 Hour Total Precipitation (in)
Valid: 00z Fri 18 Aug 2017 - 00z Wed 23 Aug 2017

ECMWF-EPS-MAXRES
Hour: 0 - 120



500 mb Height
Valid: 15z Wed 23 Aug 2017

ECMWF
Hour: 135



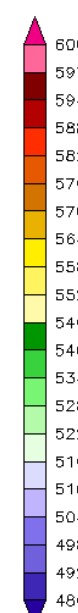
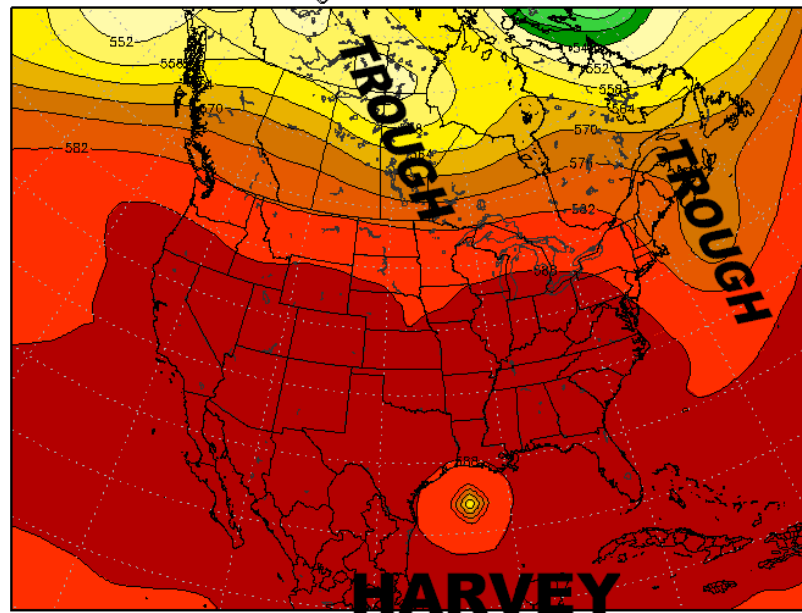
GRADS: COLA/IGES

StormVistaWxModels.com

Init: 00z Fri 18 Aug 2017-08-1

500 mb Height
Valid: 12z Sun 27 Aug 2017

ECMWF
Hour: 228



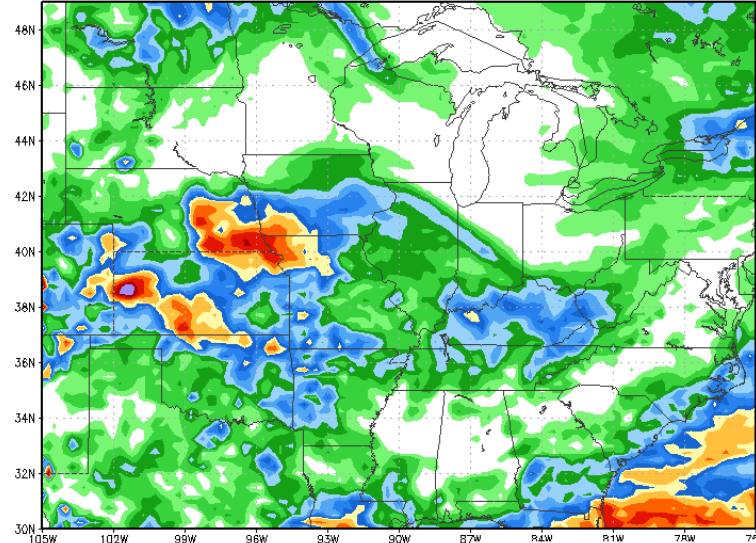
GRADS: COLA/IGES

StormVistaWxModels.com

Init: 00z Fri 18 Aug 2017-08-02:52

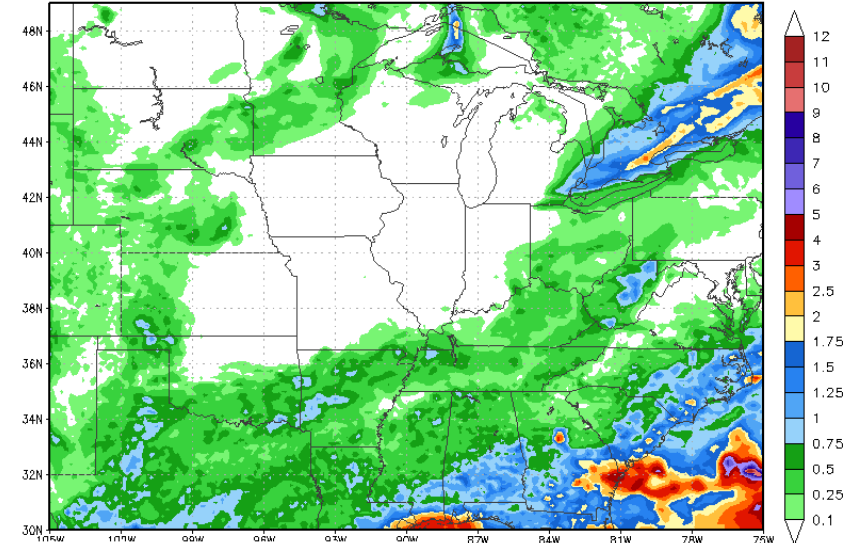
6-10 DAY GFS has much more rain in KS se NEB sw IA than EURO or CANADIAN

120 Hour Total Precipitation (in) GFS-MAXRES
Valid: 00z Wed 23 Aug 2017 - 00z Mon 28 Aug 2017 Hour: 120 - 240



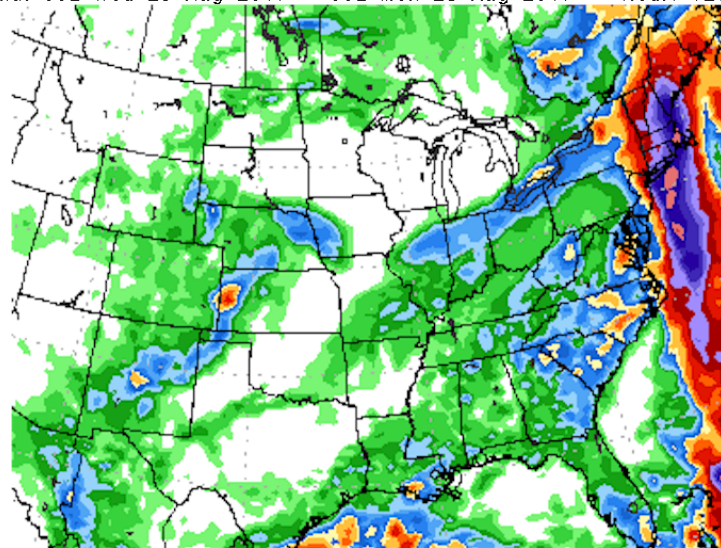
Max: 5.7 in
Min: 0.0 in

120 Hour Total Precipitation (in) ECMWF-MAXRES
Valid: 00z Wed 23 Aug 2017 - 00z Mon 28 Aug 2017 Hour: 120 - 240



StormVistaWxMo5 Day Total Precipitation (in)

Valid: 00z Wed 23 Aug 2017 - 00z Mon 28 Aug 2017 Hour: 120 - 240



Max: 45.1 in
Min: -0.0 in

StormVistaWxModels.com

Init: 00z Fri 18 Aug 2017

CMC odels.com

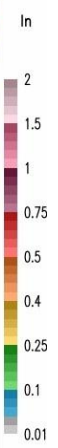
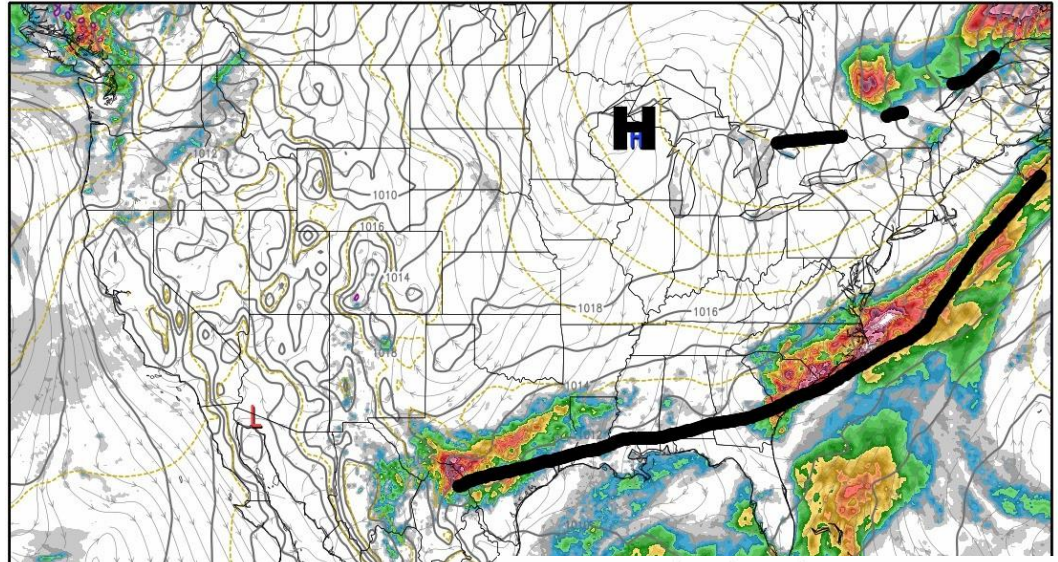
Init: 00z Fri 18 Aug 2017

2017-08-18-06:55

MSLP, 12hr Precip, Wind, Thickness, 32f

Valid Thursday 12Z 08/24

EuroWX.com



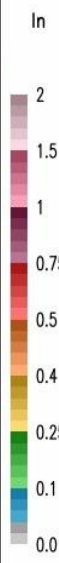
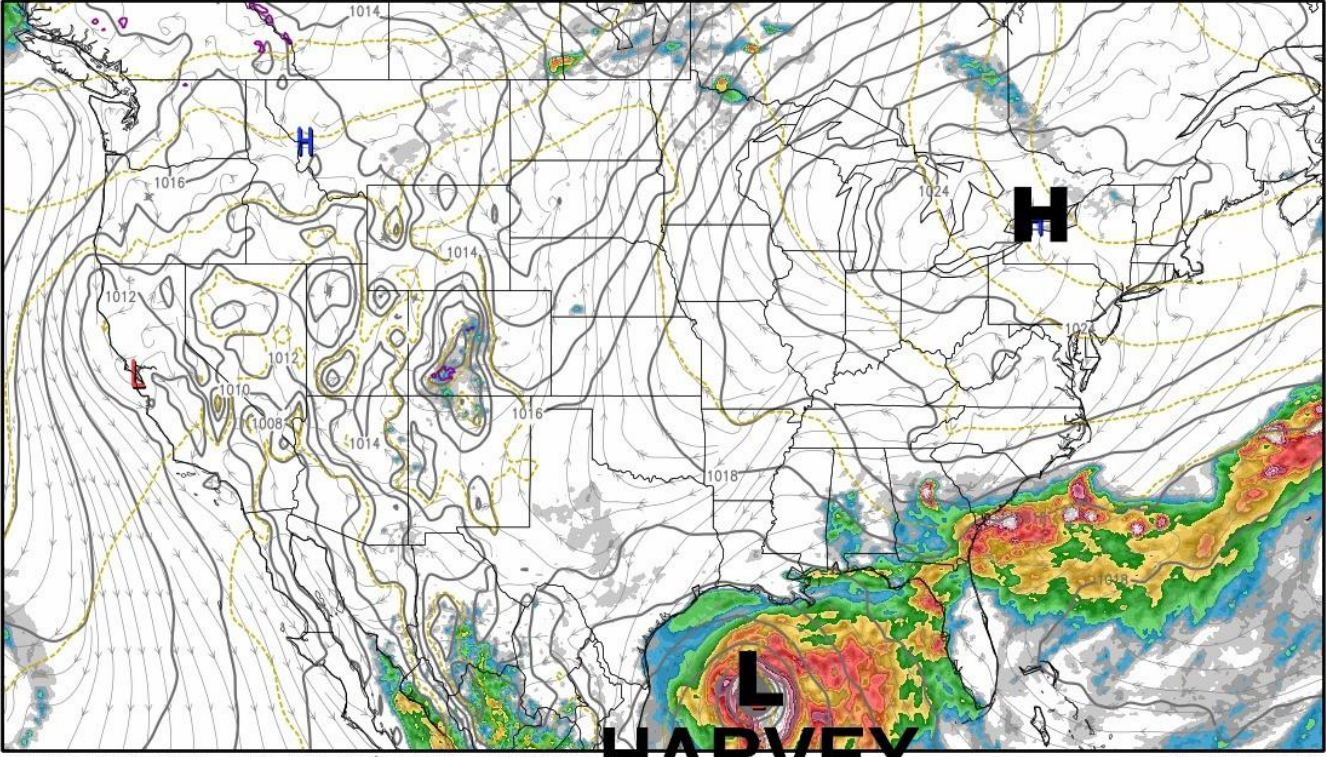
ECMWF HRES MODEL RUN 00Z 08/18 156hr FORECAST

This service is based on data and products of the

MSLP, 12hr Precip, Wind, Thickness, 32f

Valid Saturday 12Z 08/26

EuroWX.com



ECMWF HRES MODEL RUN 00Z 08/18 204hr FORECAST

This service is based on data and products of the European Center for Medium-range Weather Forecasts.

HARVEY

© 2017 ECMWF

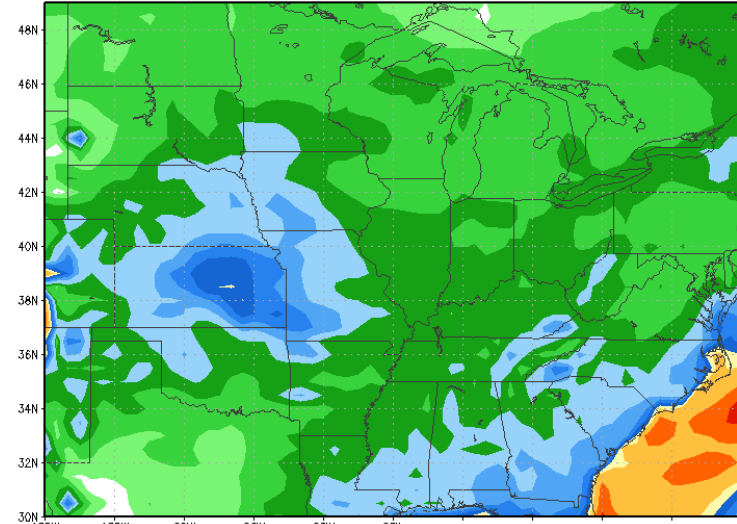
6-10 DAY ENSEMBLES

120 Hour Total Precipitation (in)

Valid: 00z Wed 23 Aug 2017 - 00z Mon 28 Aug 2017

GFS-ENS-MAXRES

Hour: 120 - 240



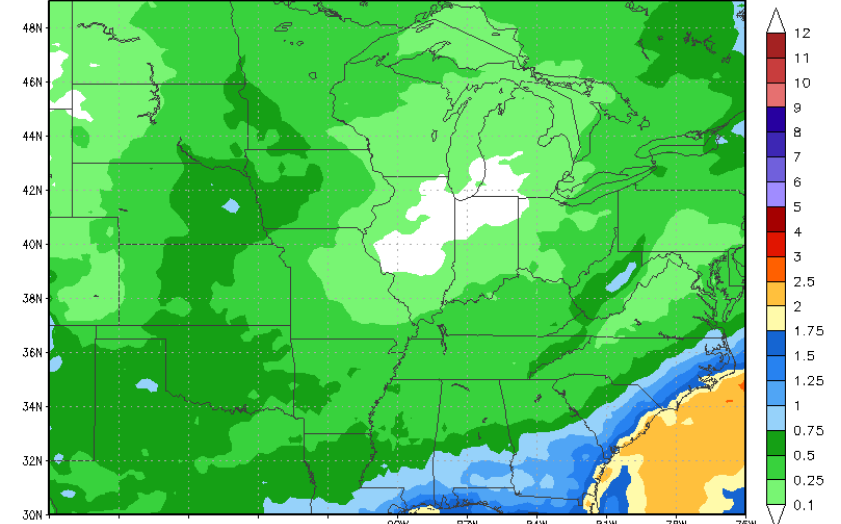
Max: 3.2 in
Min: 0.0 in

120 Hour Total Precipitation (in)

Valid: 00z Wed 23 Aug 2017 - 00z Mon 28 Aug 2017

ECMWF-EPS-MAXRES

Hour: 120 - 240



StormVista 5 Day Total Precipitation (in)

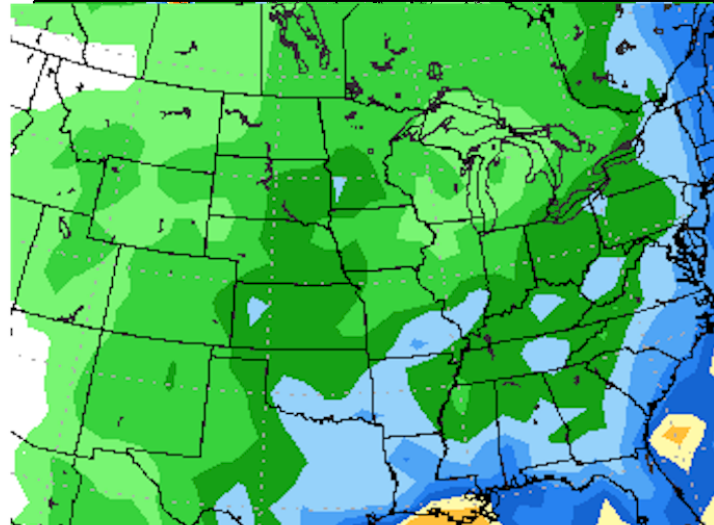
Valid: 00z Wed 23 Aug 2017 - 00z Mon 28 Aug 2017

CMC-ENS

Hour: 120 - 240

aWxModels.com

Init: 00z Fri 18 Aug 2017
2017-08-18-07:41



Max: 4.9 in
Min: 0.0 in

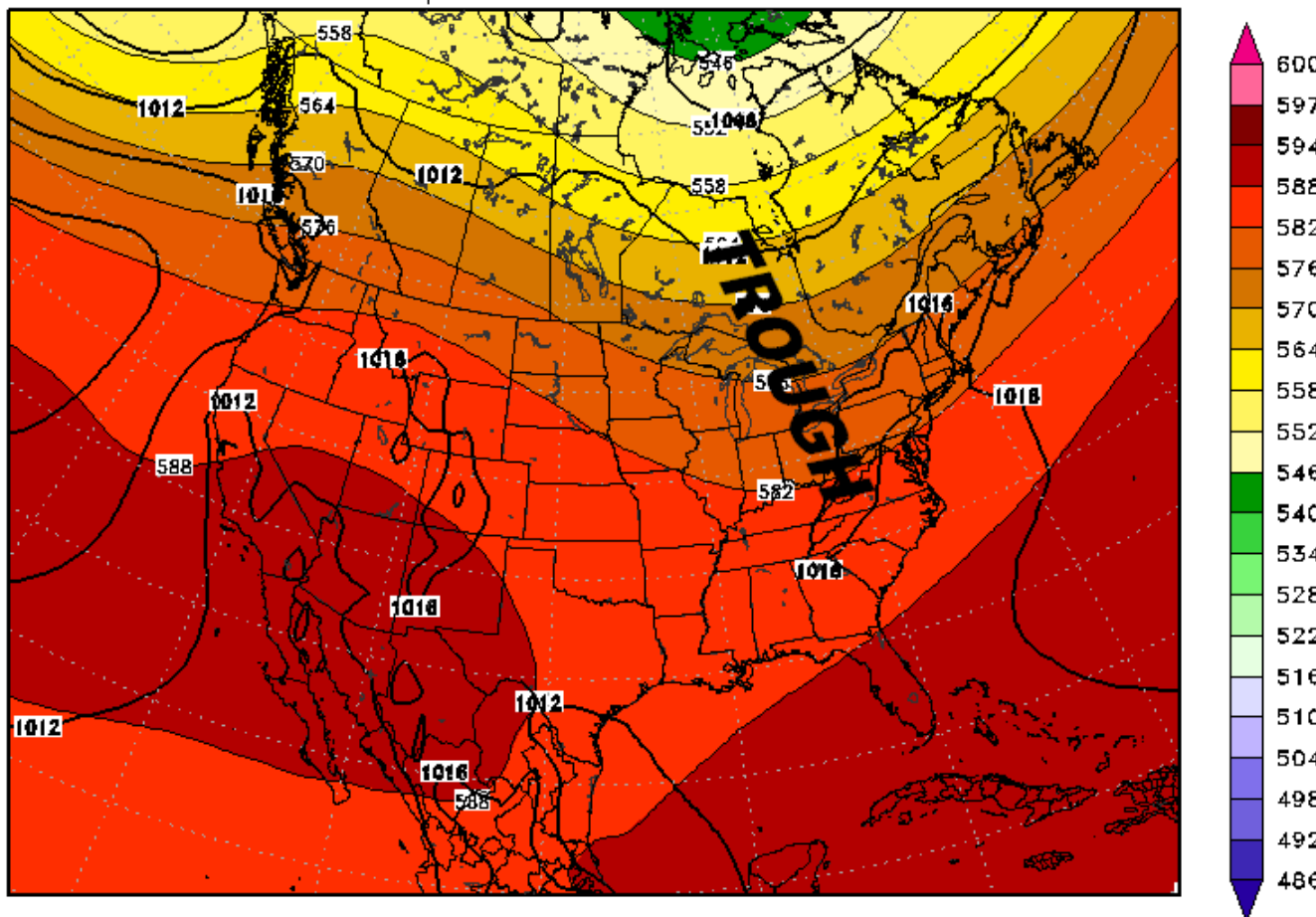
StormVistaWxModels.com

Init: 00z Fri 18 Aug 2017
2017-08-18-01:08

NOTICE HOW TROUGH STAYS OVER MIDWEST EAST COAST.. As favored by LONG TERM soil moisture trends

500 mb Height & MSLP
Valid: 12z Fri 01 Sep 2017

ECMWF-EP5
Hour: 348



Max: 592.0 dm
Min: 539.5 dm

StormVistaWxModels.com

Init: 00z Fri 18 Aug 2017
2017-08-18-03:58

11-15 DAY ENSEMBLES

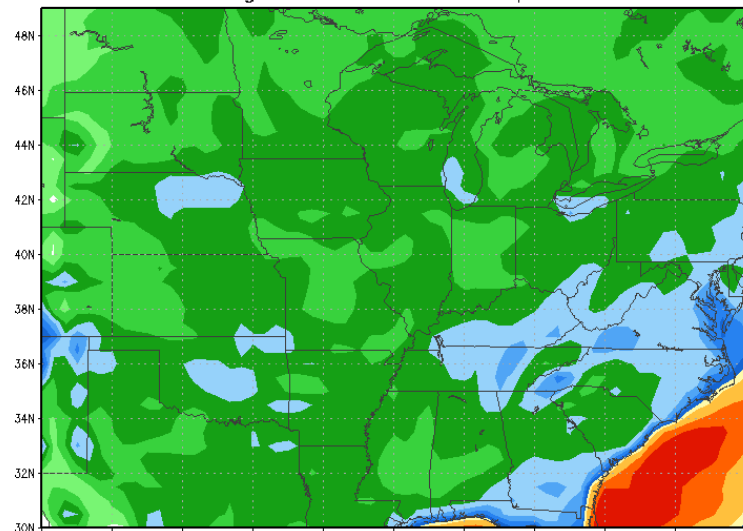
GFS RAINFALL LEFT EURO RIGHT ...

120 Hour Total Precipitation (in)
Valid: 00z Mon 28 Aug 2017 - 00z Sat 02 Sep 2017

GFS-ENS-MAXRES
Hour: 240 - 360

120 Hour Total Precipitation (in)
Valid: 00z Mon 28 Aug 2017 - 00z Sat 02 Sep 2017

ECMWF-EPS-MAXRES
Hour: 240 - 360



Max: 3.9 in
Min: 0.1 in

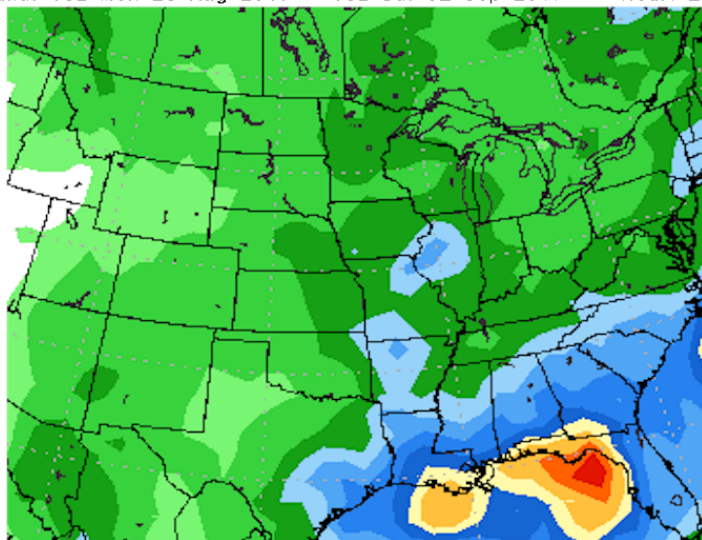
StormVistaW

5 Day Total Precipitation (in)
Valid: 18z Mon 28 Aug 2017 - 18z Sat 02 Sep 2017

CMC-ENS
Hour: 258 - 378

VxModels.com

Init: 00z Fri 18 Aug 2017
2017-08-18-08:02



Max: 4.8 in
Min: 0.0 in

StormVistaWxModels.com

Init: 00z Fri 18 Aug 2017
2017-08-18-01:18

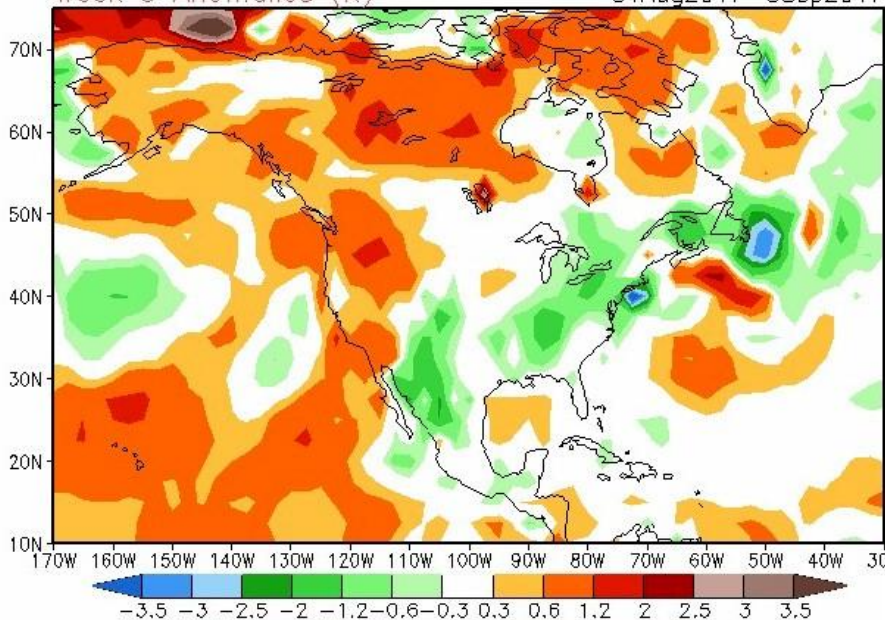
AUG 17 WEEK 3 CFS dry over most of WCB/ Delta COOL temps eastern US

CFSv2 Extended Range Temperature

16 Member Ensemble Mean Forecast from 16Aug2017:

Week 3 Anomalies (K)

31Aug2017-6Sep2017

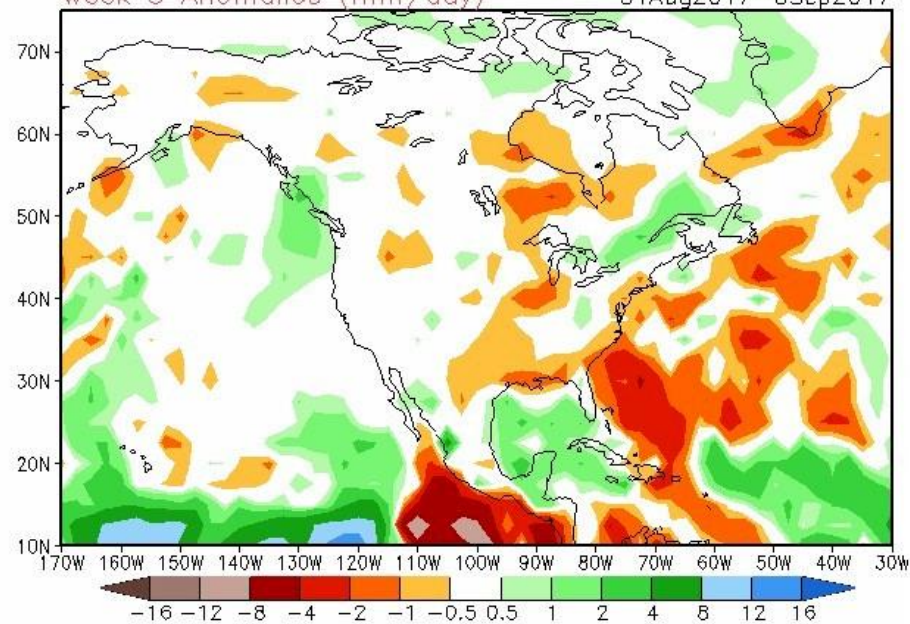


CFSv2 Weeks 3 & 4 Precipitation

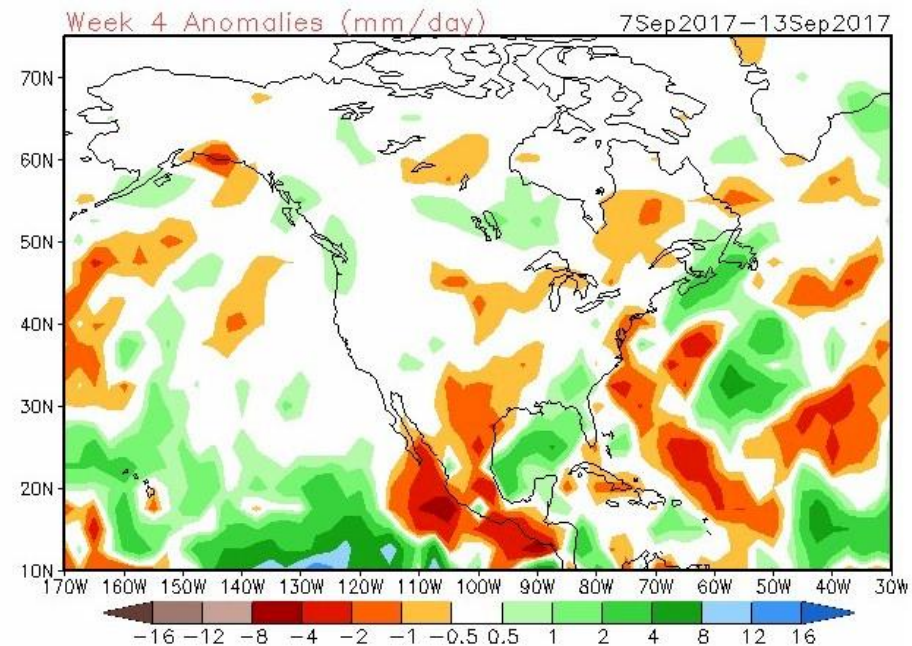
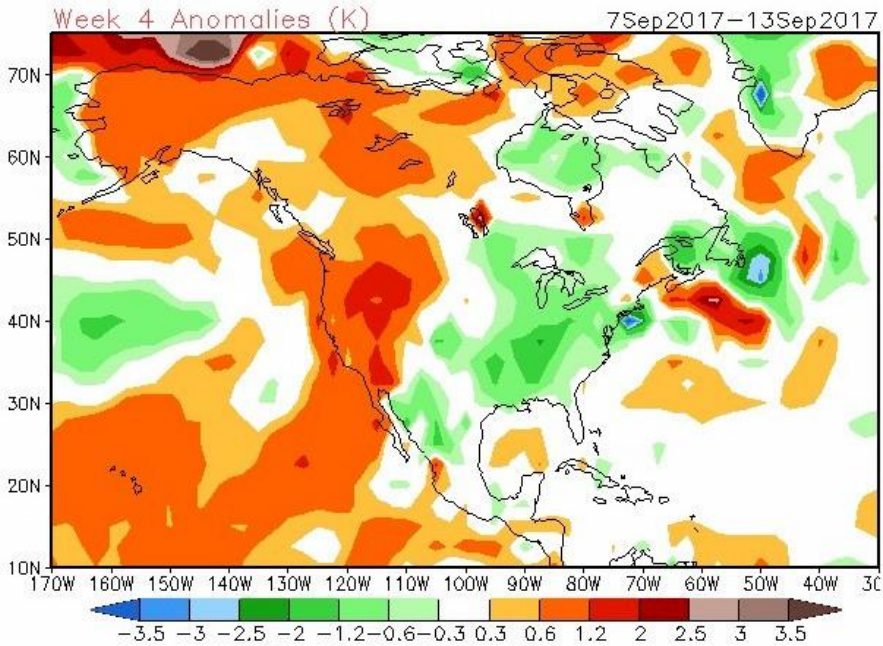
16 Member Ensemble Mean Forecast from 16Aug2017:

Week 3 Anomalies (mm/day)

31Aug2017-6Sep2017



WEEK 4 CFS cool temps Midwest Delta but DRY most areas

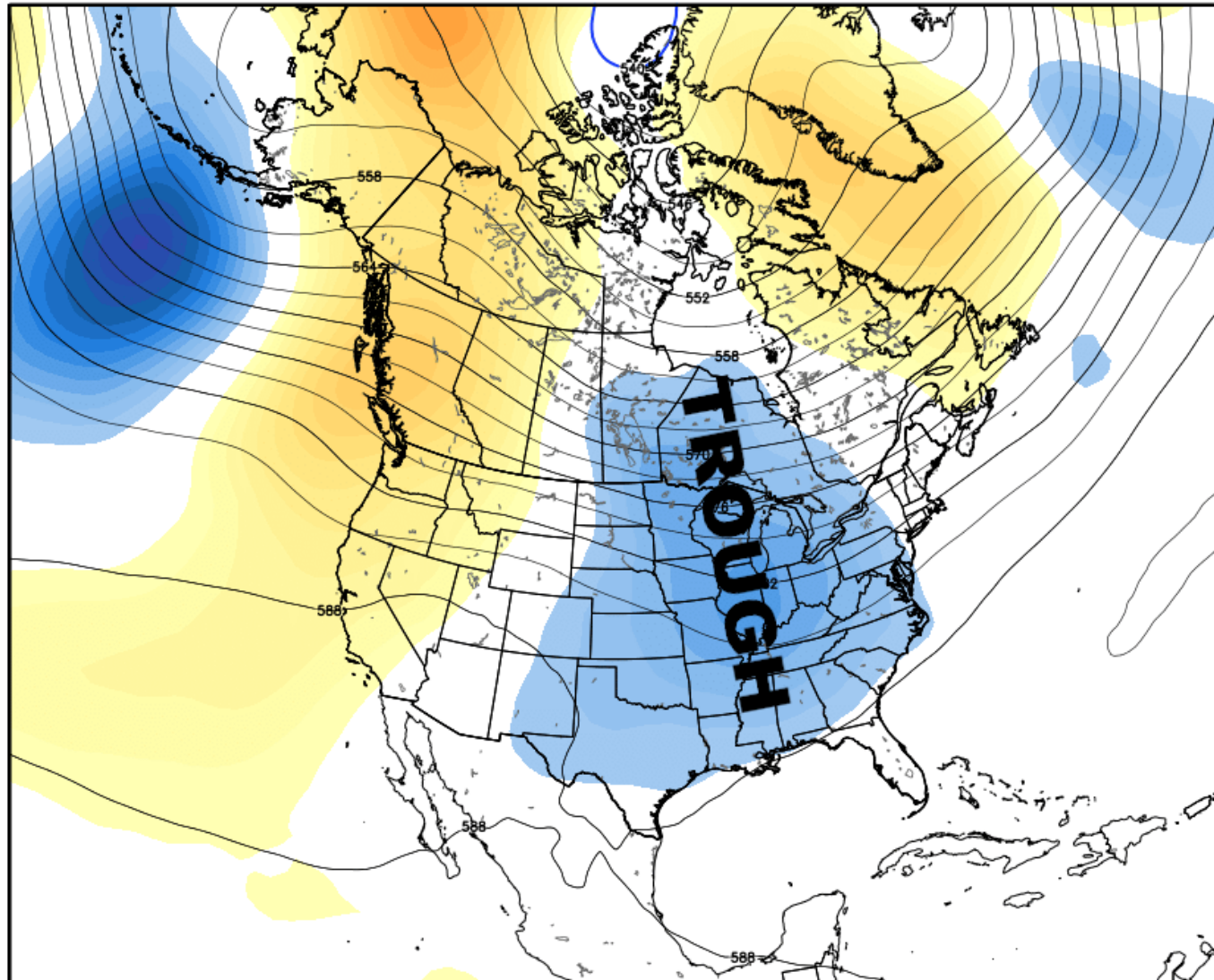


AUG 17 EURO WEEKLIES 500 mb map valid 9/1

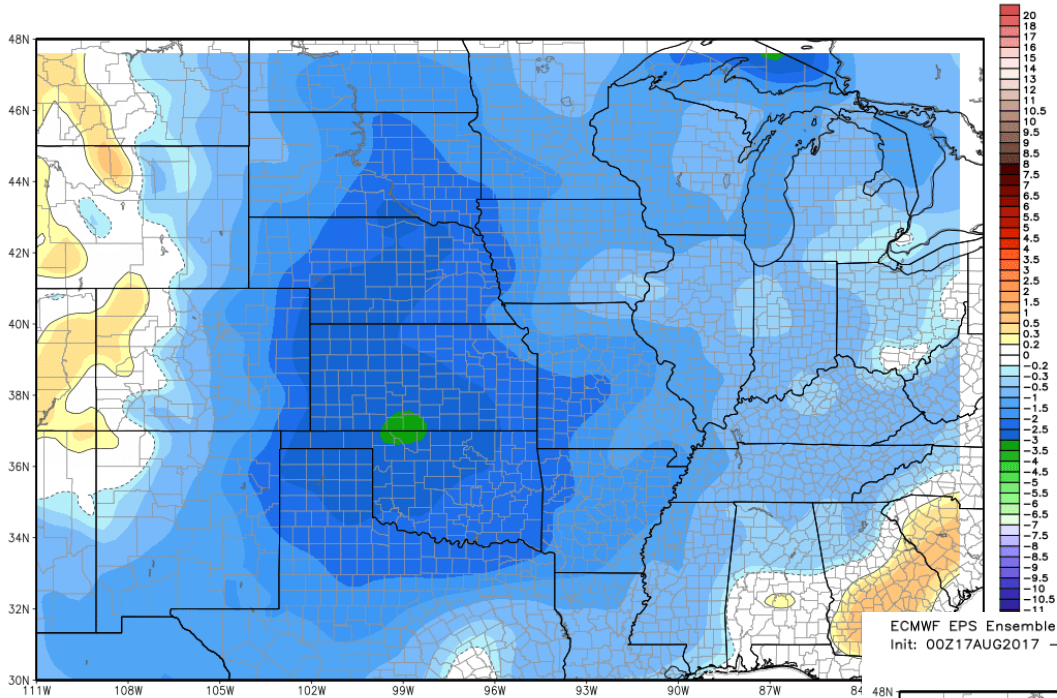
ECMWF EPS Monthly Ensemble Mean 500 hPa Geopotential Height [dm] & Anomaly [m]

INIT: 00Z17AUG2017 fx: [360] hr --> Fri 00Z01SEP2017

Min|Max: -65.7 | 73.9 m



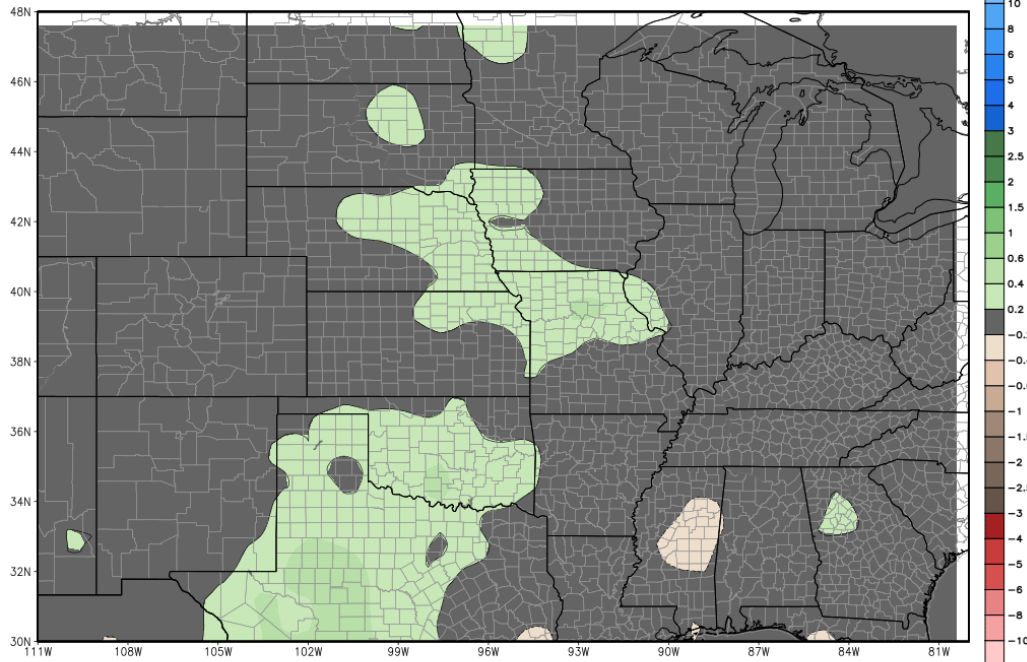
ECMWF EPS Ensemble Mean 7-day Avg 2m Temperature Anomaly [°C]
Init: 00Z17AUG2017 -- [504] hr --> Valid on Thu 00Z07SEP2017 Day 14 - Day 21



ECMWF EPS Ensemble Mean 7-day Avg Precipitation Anomaly [inch]
Init: 00Z17AUG2017 -- [504] hr --> Valid on Thu 00Z07SEP2017 Day 14 - Day 21

Min|Max Anom: -0.7 | 0.6 inch

Average between 00Z31AUG2017-00Z07SEP2017 | ECMWF EPS 1997-2016 Hindcast Climatology

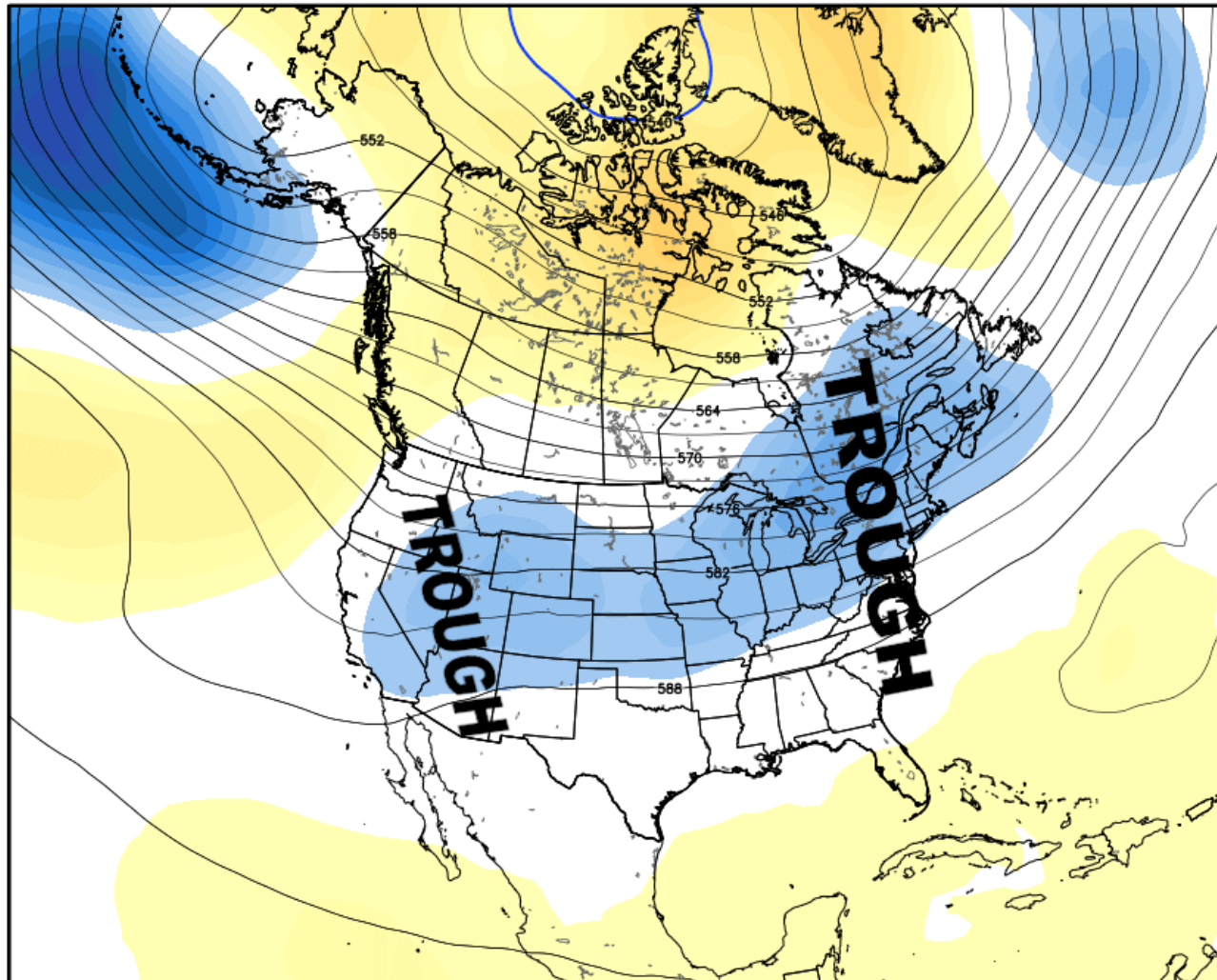


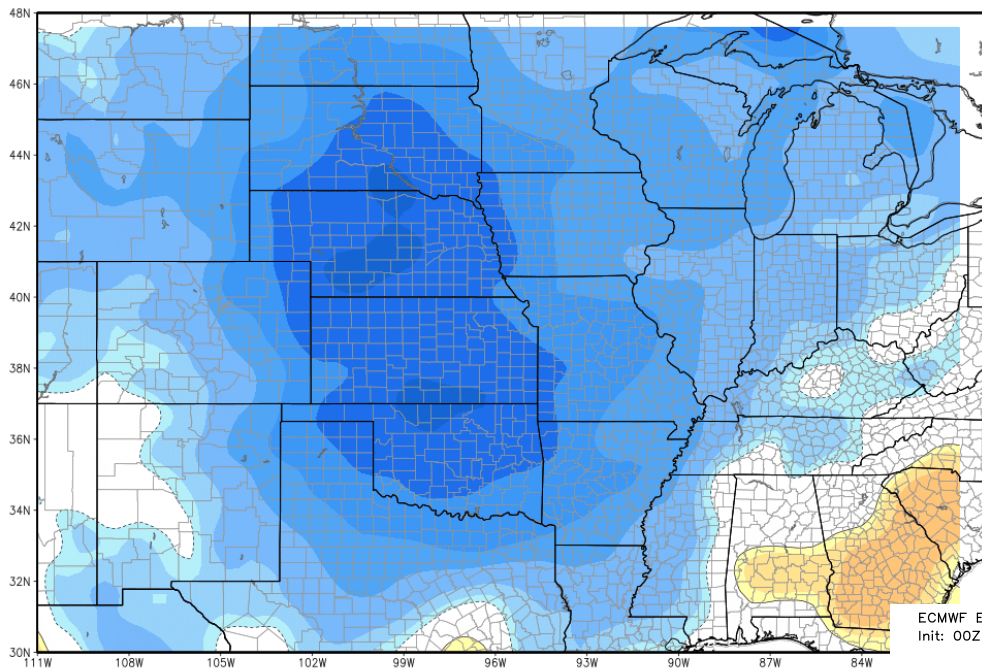
Accumulation between 00Z31AUG2017-00Z07SEP2017 | ECMWF EPS 1997-2016 Hindcast Climatology

EURO WEEKLIES valid 9/7-

ECMWF EPS Monthly Ensemble Mean 500 hPa Geopotential Height [dm] & Anomaly [m]
INIT: 00Z17AUG2017 fx: [504] hr --> Thu 00Z07SEP2017

Min|Max: -63.6 | 51.6 m

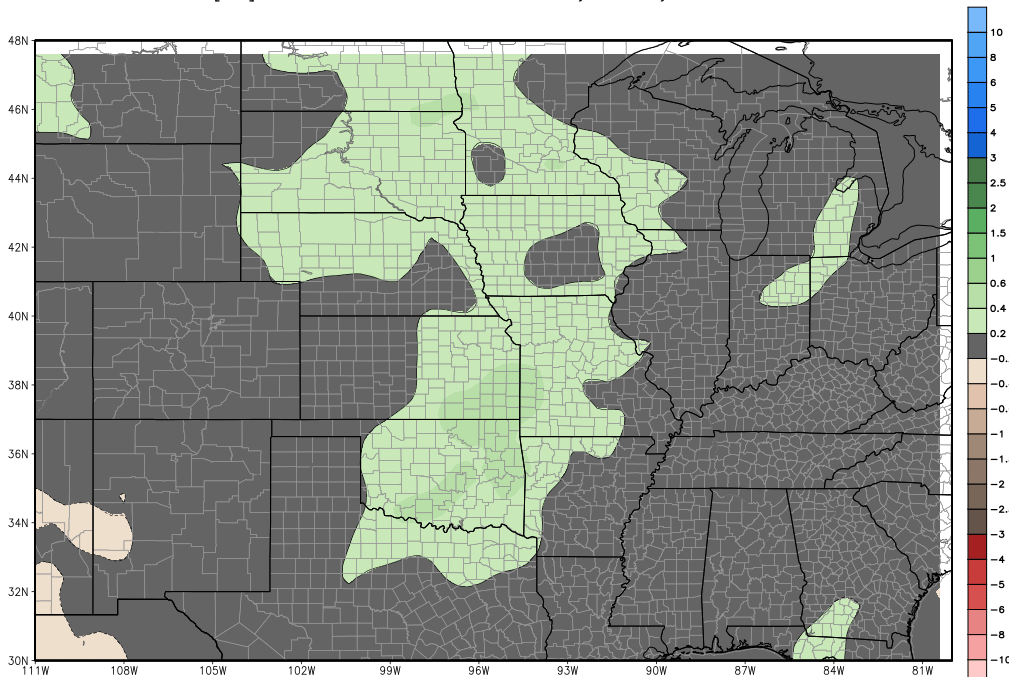




ECMWF EPS Ensemble Mean 7-day Avg Precipitation Anomaly [inch]

Min|Max Anom: -0.5 | 0.6 inch

Average between 00Z07SEP2017-00Z14SEP2017 | ECMWF EPS 1997-2016 Hindcast Climatology



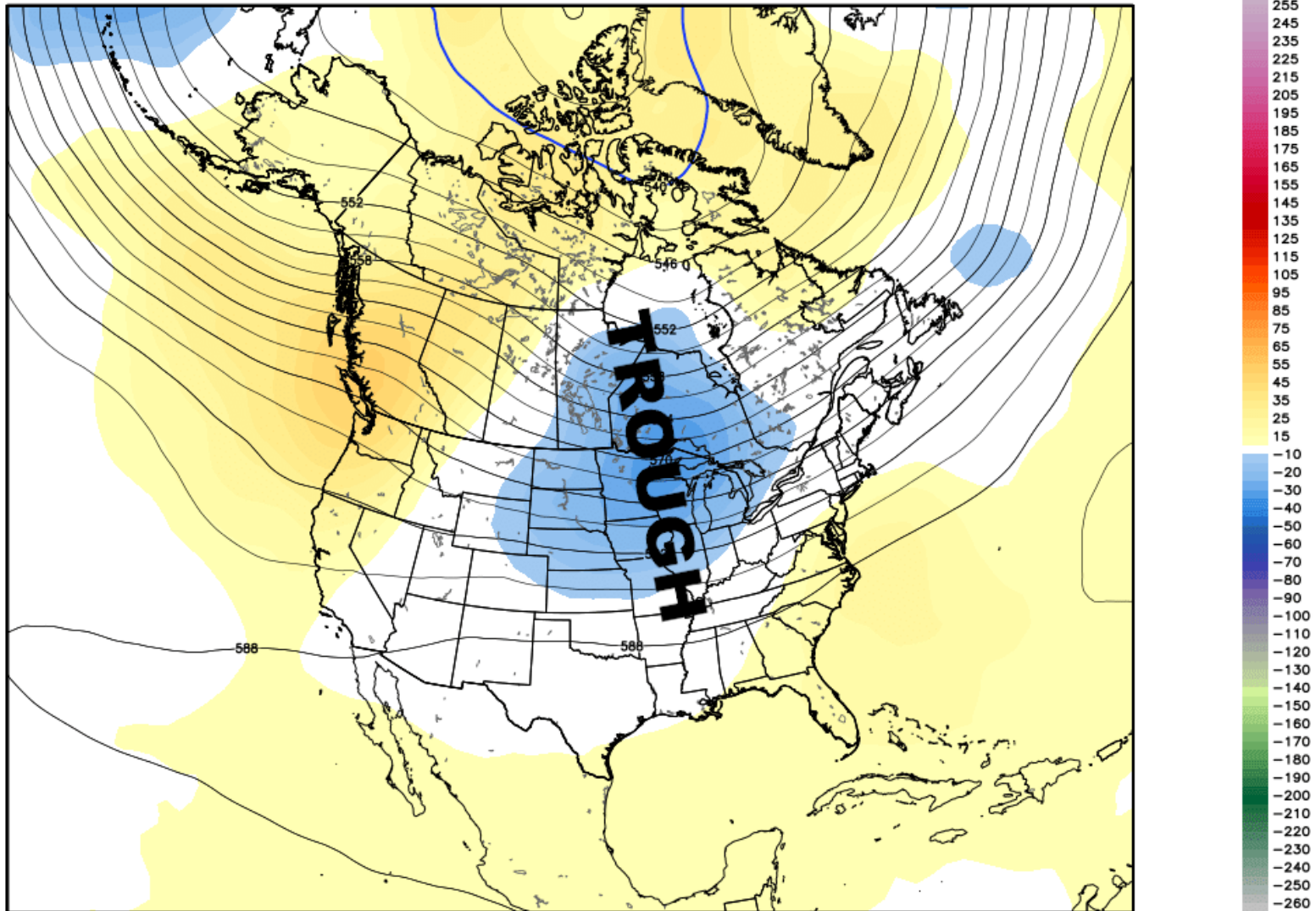
Accumulation between 00Z07SEP2017-00Z14SEP2017 | ECMWF EPS 1997-2016 Hindcast Climatology

EURO WEEKLIES = SEPT 15

ECMWF EPS Monthly Ensemble Mean 500 hPa Geopotential Height [dm] & Anomaly [m]

INIT: 00Z17AUG2017 fx: [696] hr --> Fri 00Z15SEP2017

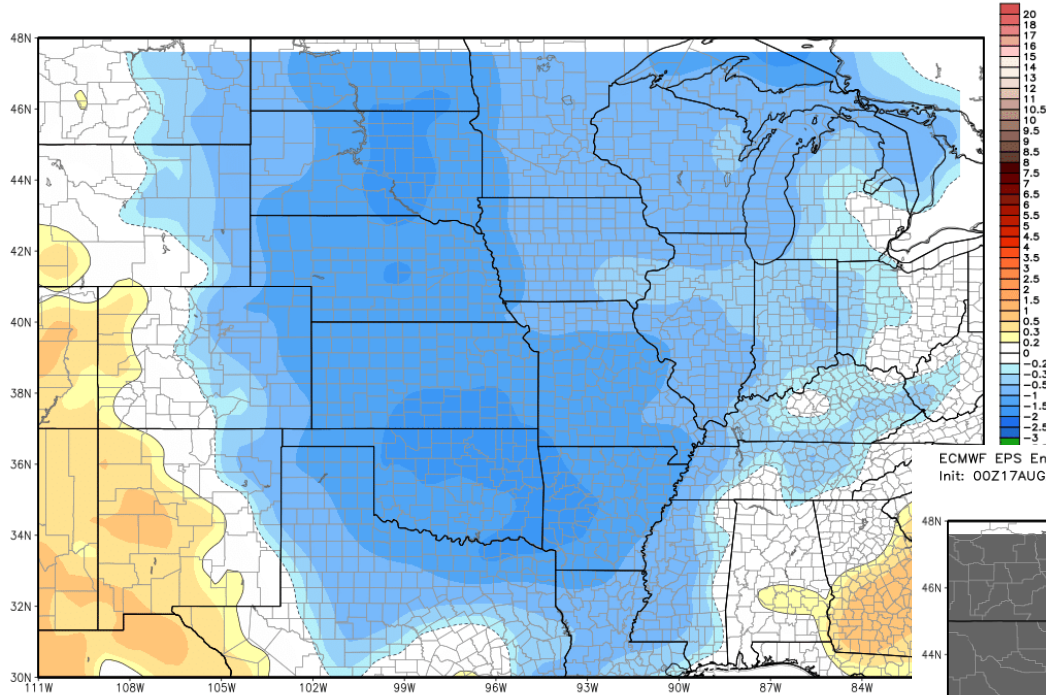
Min|Max: -34.4 | 51.3 m



EURO WEEKLY RAINFALL ANOMALIES

... AUGUST 24-31 ..

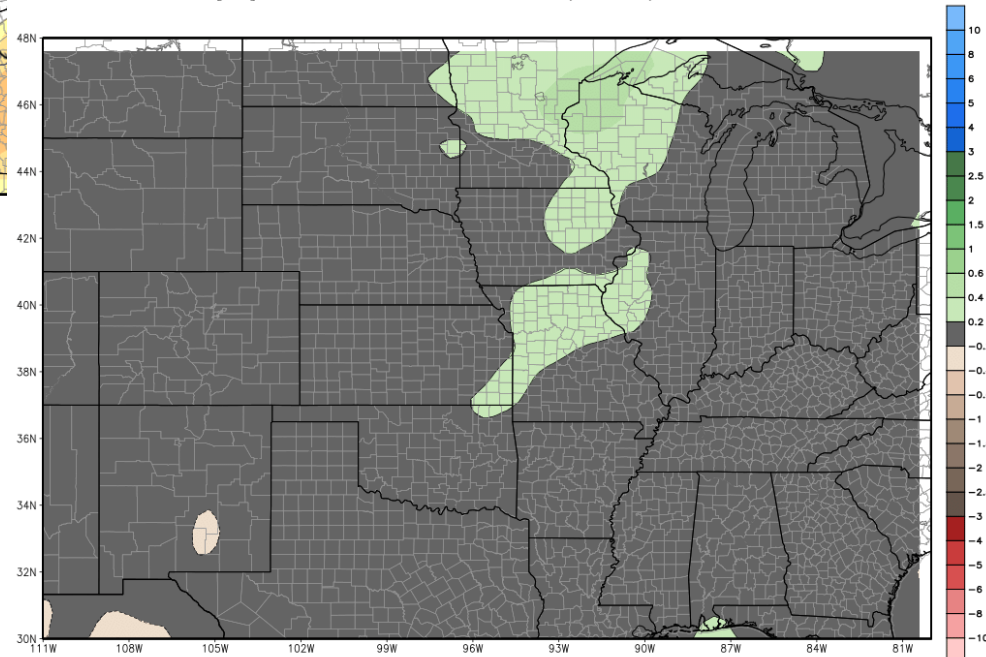
ECMWF EPS Ensemble Mean 7-day Avg 2m Temperature Anomaly [°C] Min|Max: -1.9° | 1.3°C
 Init: 00Z17AUG2017 -- [840] hr --> Valid on Thu 00Z21SEP2017 Day 28 - Day 35



Average between 00Z14SEP2017-00Z21SEP2017 | ECMWF EPS 1997-2016 Hindcast Climatology



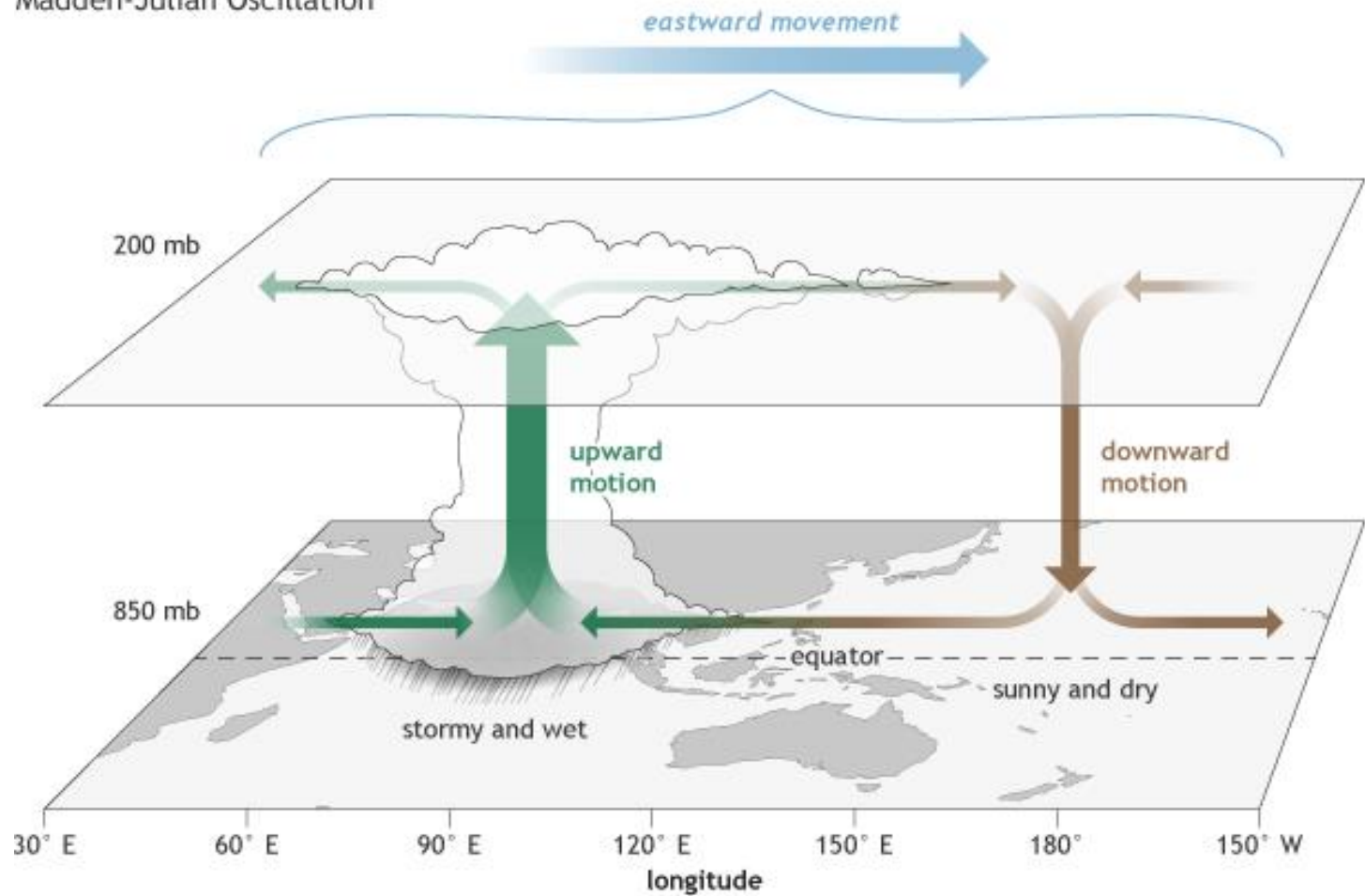
ECMWF EPS Ensemble Mean 7-day Avg Precipitation Anomaly [inch] Min|Max Anom: -0.5 | 0.6 inch
 Init: 00Z17AUG2017 -- [840] hr --> Valid on Thu 00Z21SEP2017 Day 28 - Day 35



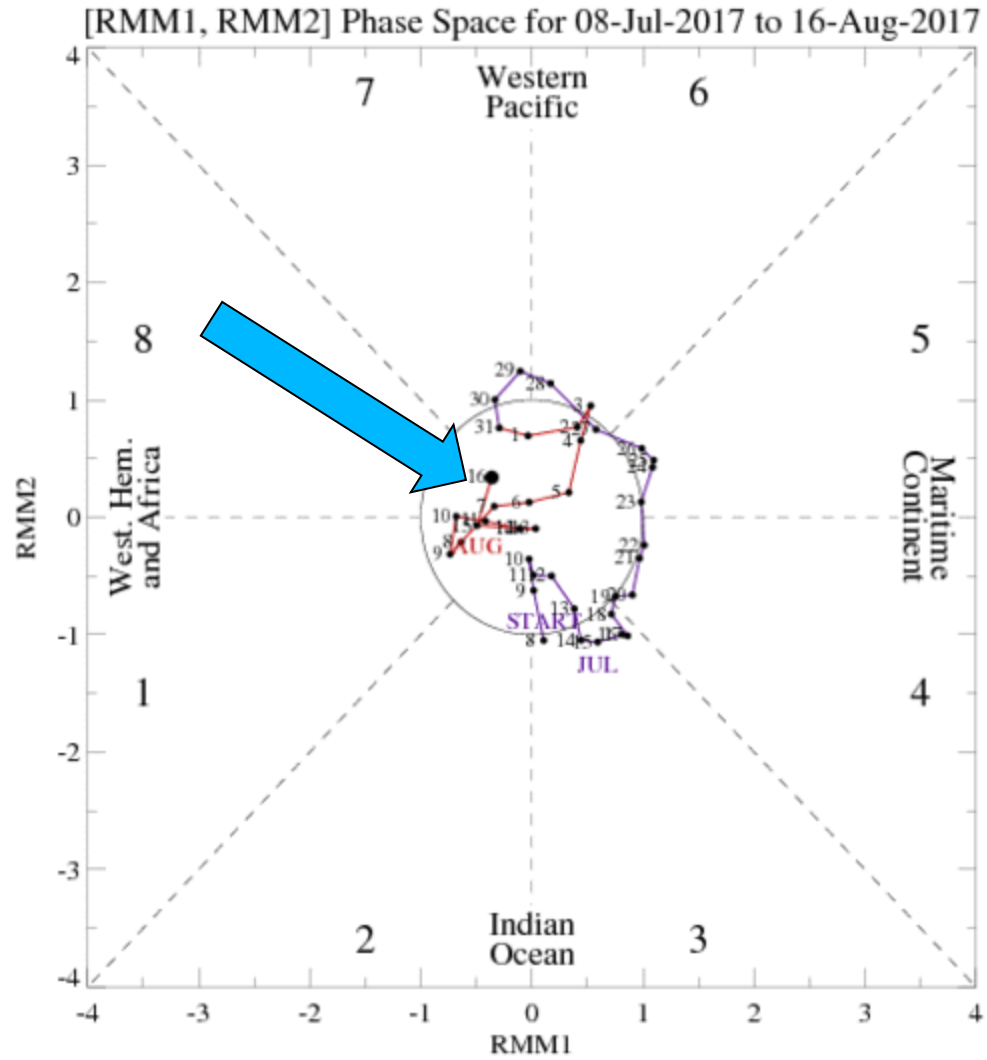
Accumulation between 00Z14SEP2017-00Z21SEP2017 | ECMWF EPS 1997-2016 Hindcast Climatology

LETS TALK MJO/ENSO

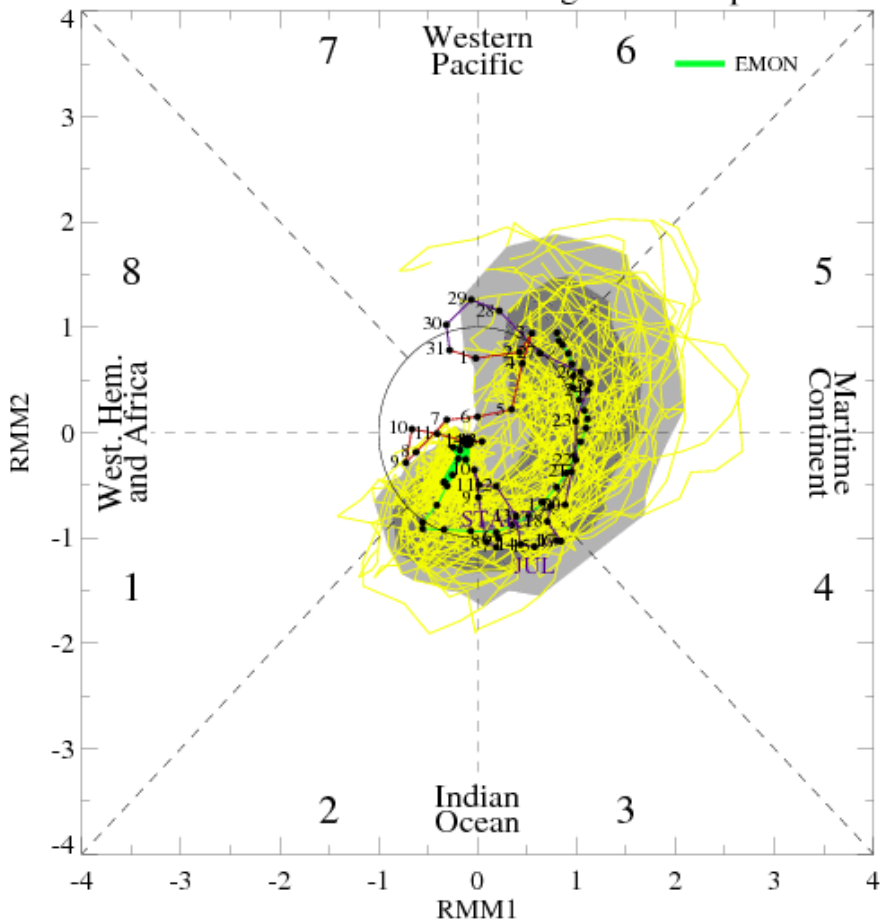
Madden-Julian Oscillation



MJO STAYS WEAK

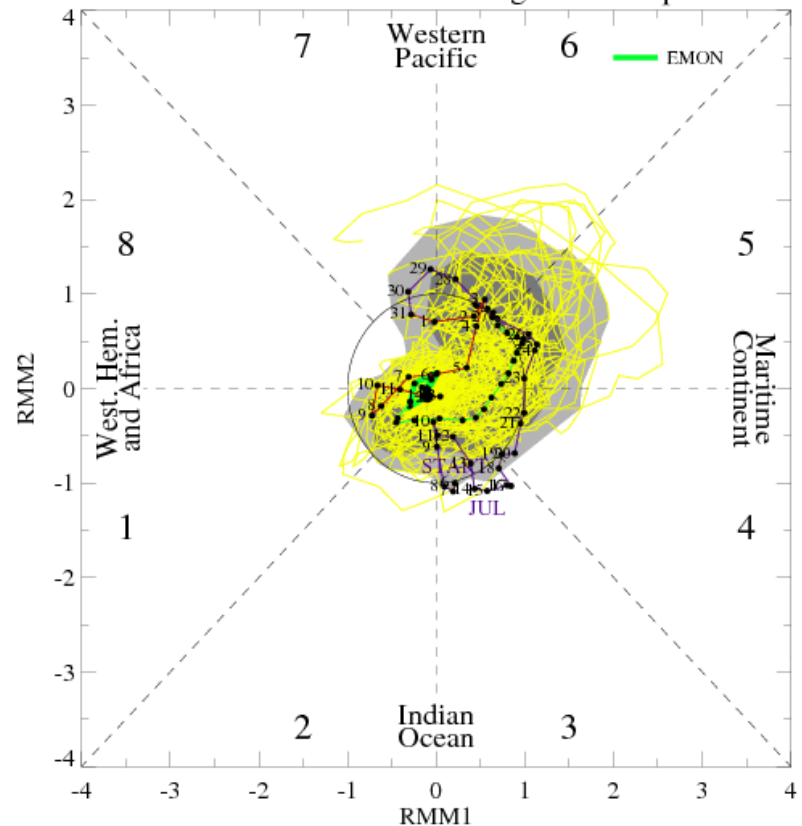


MJO Index Forecast for 15Aug2017-15Sep2017

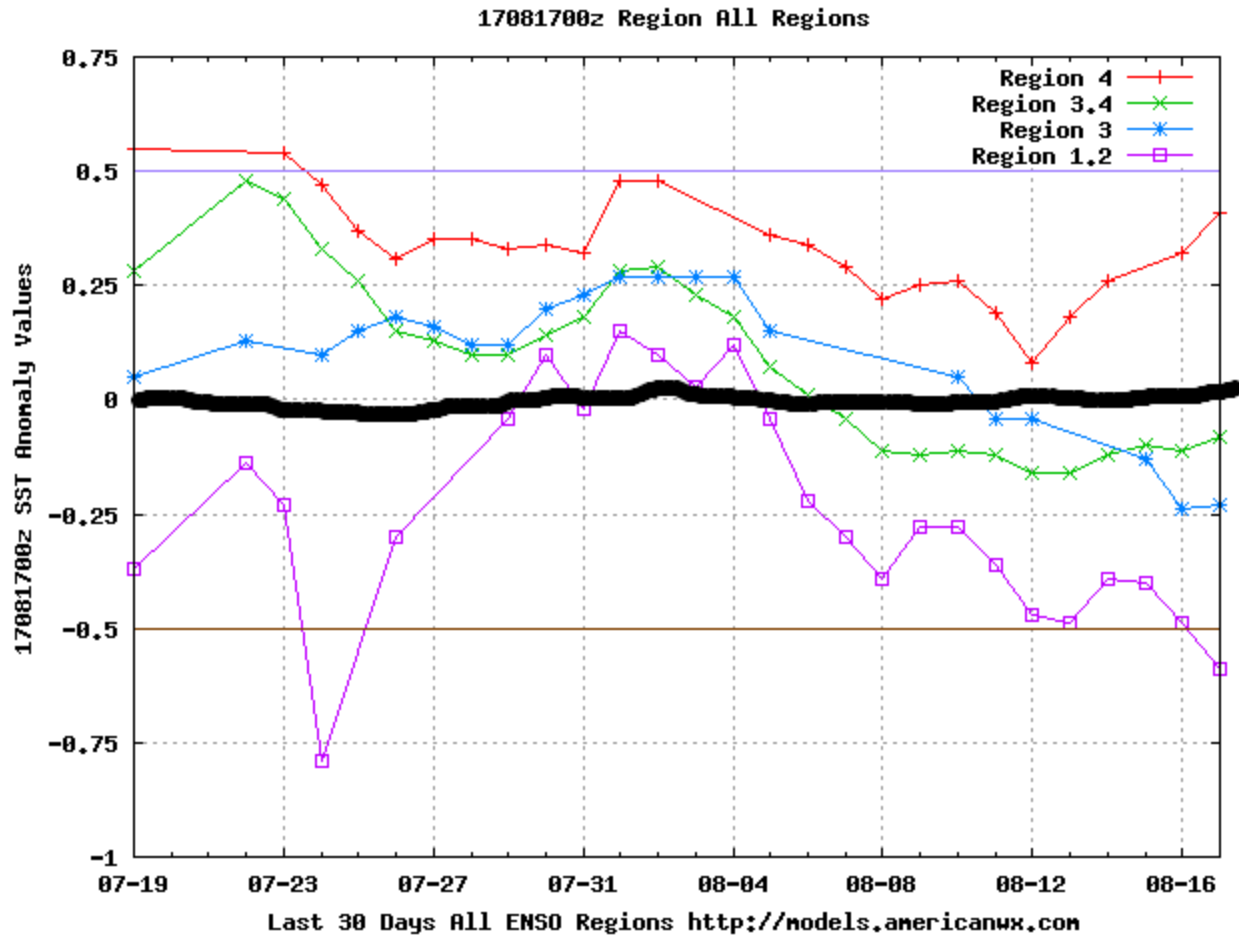


MJO STAYS Weak may barely get into week 3 4 5 but if ti does so weak it wont have much impact

MJO Index Forecast for 15Aug2017-15Sep2017



BLACK LINE - MIN CRITERIA FOR EL NINO... all areas now cooling and at or below Min criteria for weak El Nino

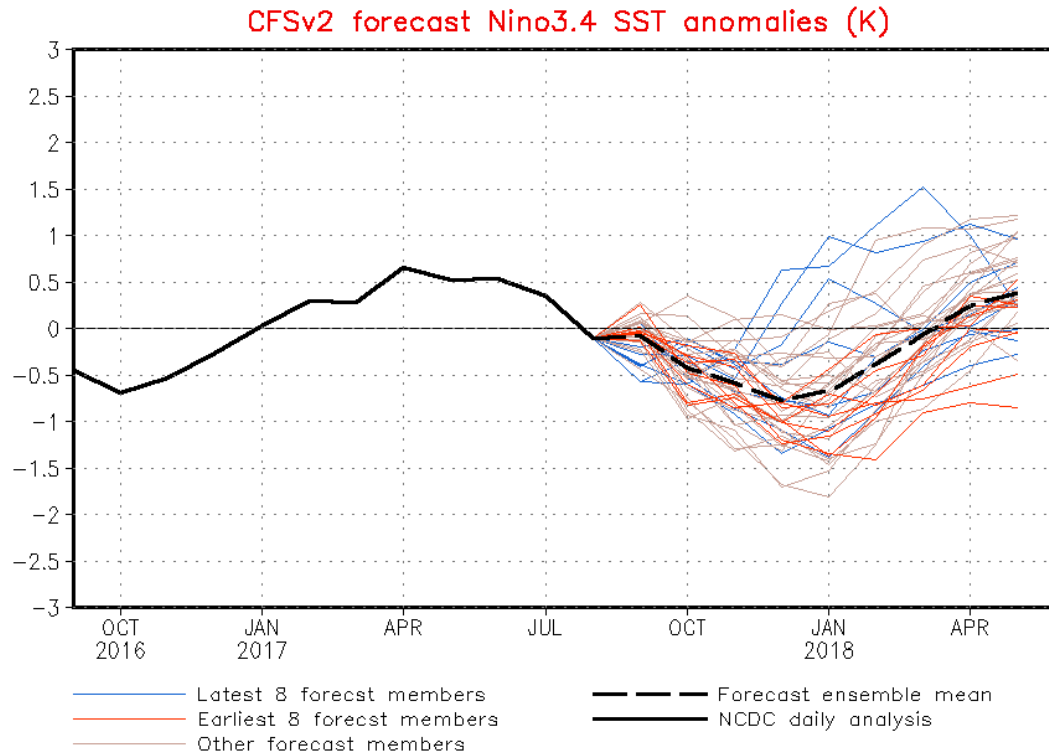


CFS enso new data = major cooling in most enso regions and weak La Nina winter 2017-18



NWS/NCEP/CPC

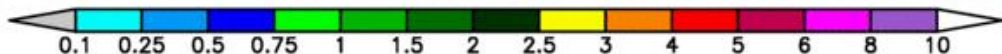
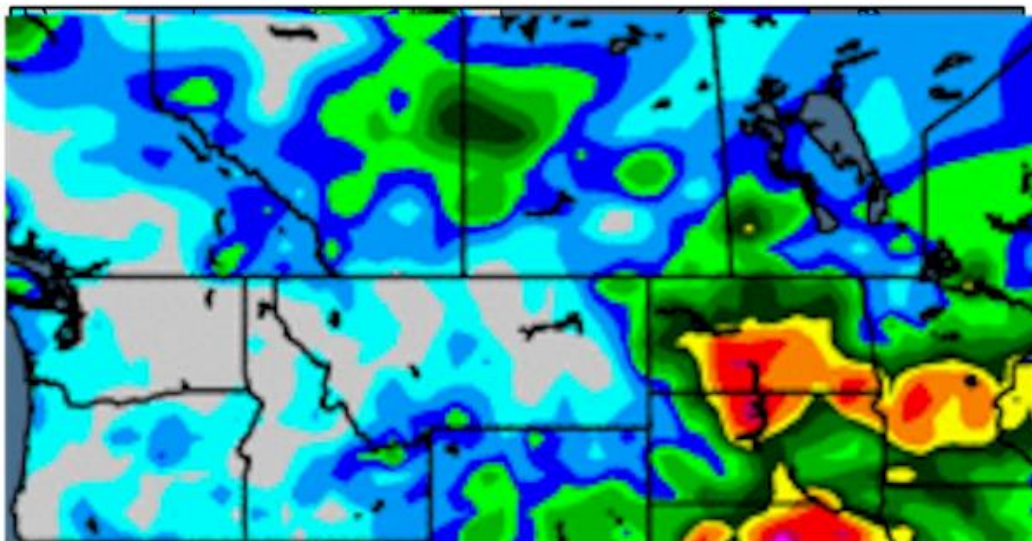
Last update: Thu Aug 17 2017
Initial conditions: 7Aug2017-16Aug2017



**CANADA
GRAIN
WEATHER**

14-day Precipitation Analysis

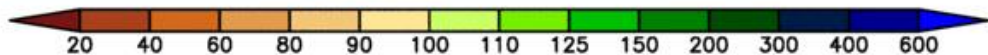
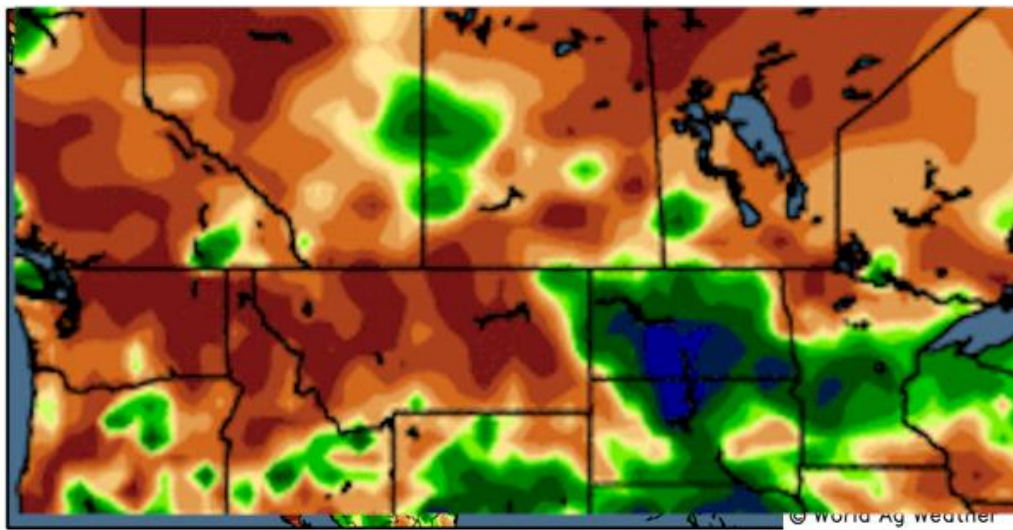
Observed precipitation (inches) through 12 UTC 16 Aug 2017



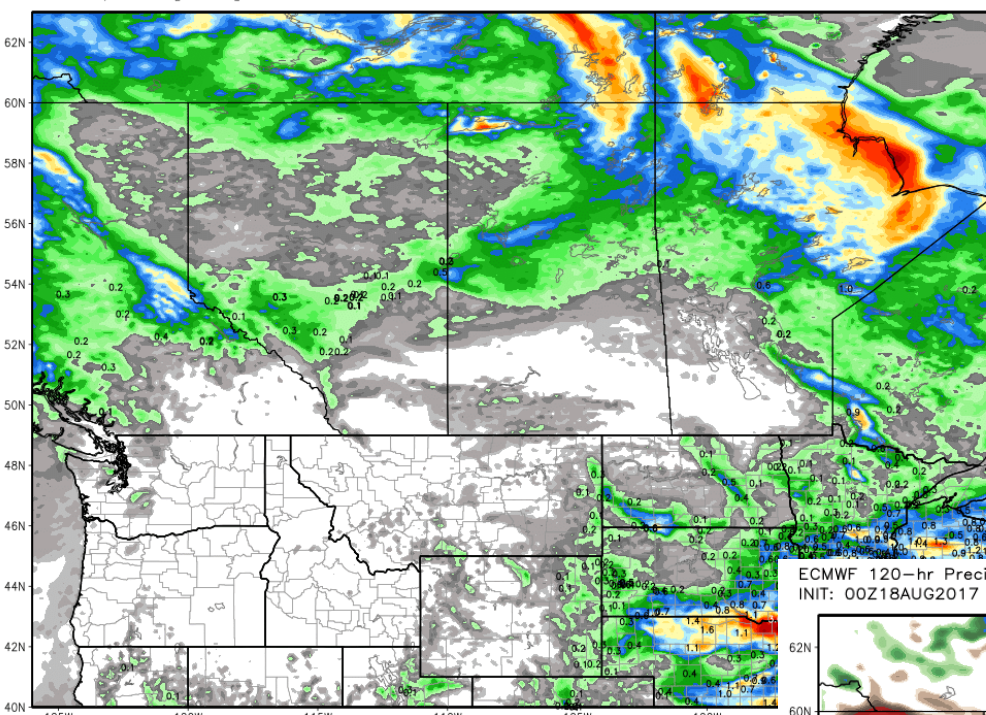
**CANADIAN PRAIRIES
VERY DRY PAST 14
DAYS**

14-day Precipitation Analysis

Percent of normal through 12 UTC 16 Aug 2017

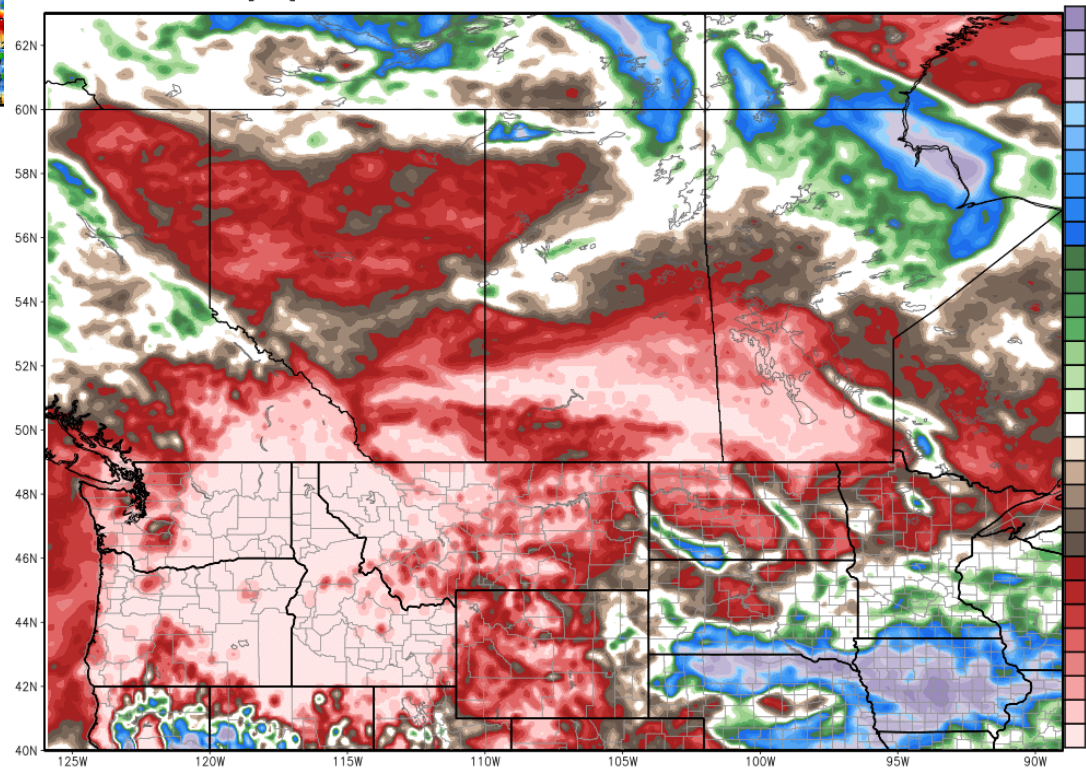


ECMWF 120-hourly Precipitation [inch] INIT: 00Z18AUG2017 fx: [120] hr --> Wed 00Z23AUG2017
Total Precipitation [inches] between 00Z18AUG2017 -- 00Z23AUG2017

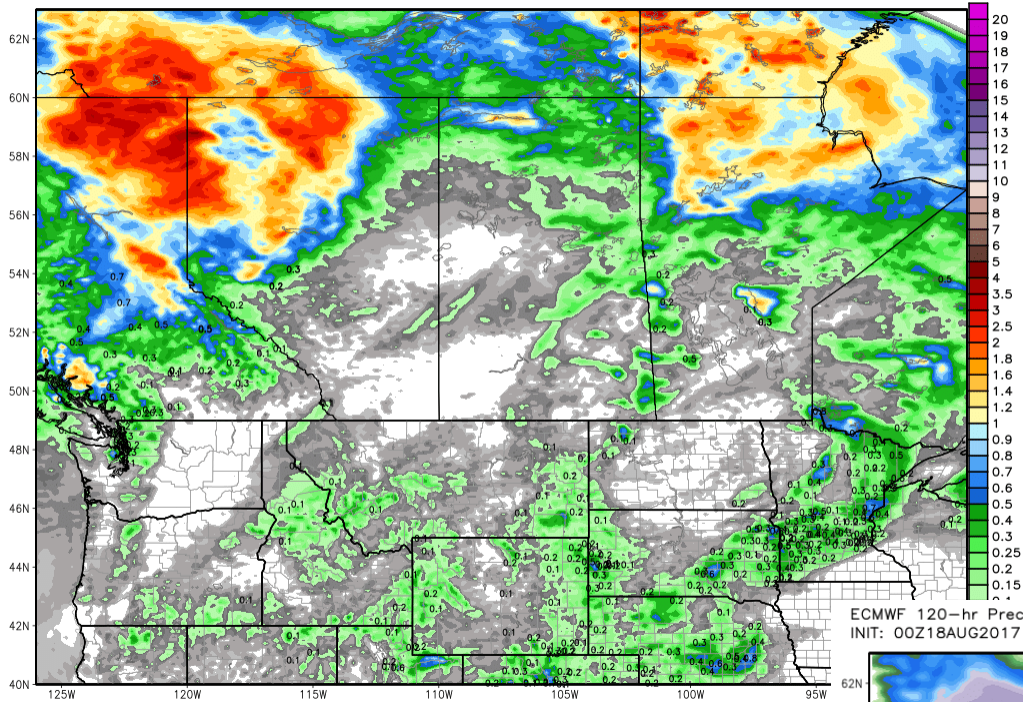


NEXT 5 DAYS NO CHANGE FOR CANADIAN PRAIRIES

ECMWF 120-hr Precip Anomaly [% of normal] between 00Z18AUG2017 -- 00Z23AUG2017
INIT: 00Z18AUG2017 fx: [120] hr --> Wed 00Z23AUG2017

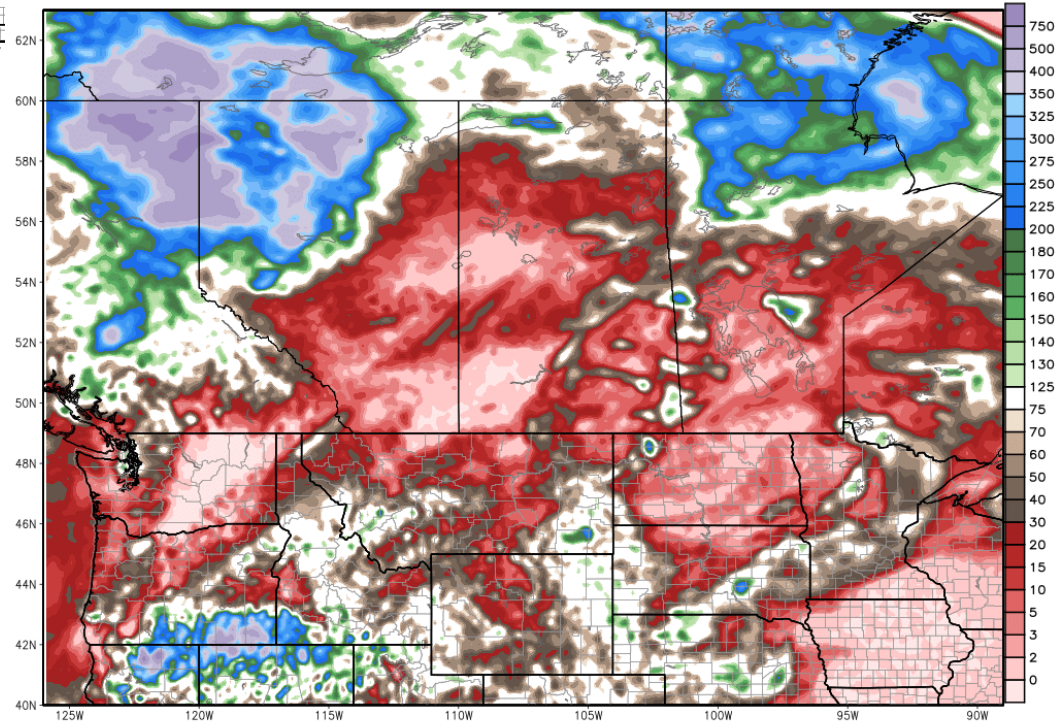


ECMWF 120-hourly Precipitation [inch] INIT: 00Z18AUG2017 fx: [240] hr ---> Mon 00Z28AUG2017
Total Precipitation [inches] between 00Z23AUG2017 -- 00Z28AUG2017



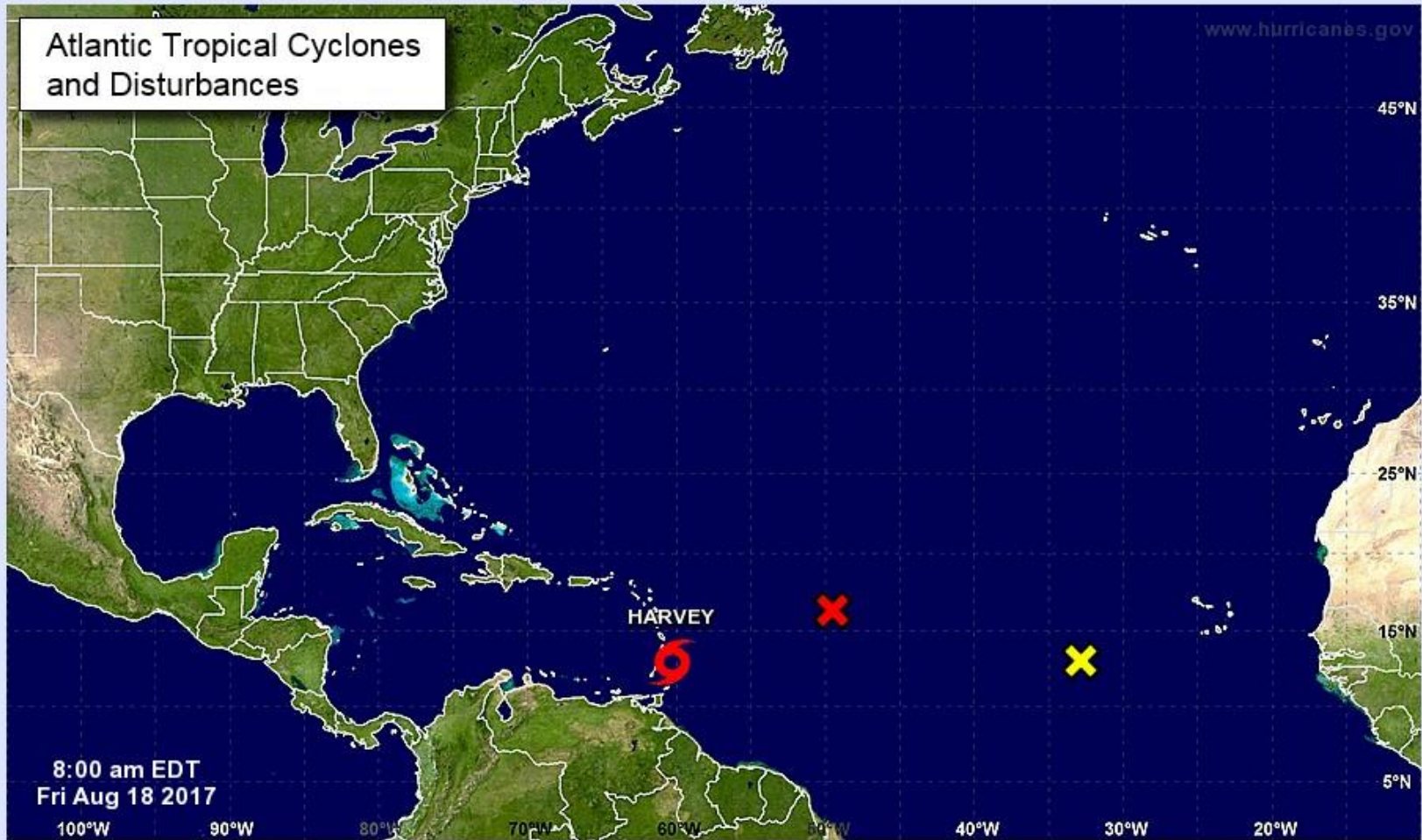
6-10 DAY EVEN DRIER OVER ALL OF CANADIAN PRAIRIES

ECMWF 120-hr Precip Anomaly [% of normal] between 00Z23AUG2017 -- 00Z28AUG2017
INIT: 00Z18AUG2017 fx: [240] hr ---> Mon 00Z28AUG2017



Atlantic Tropical Cyclones and Disturbances

www.hurricanes.gov



Current Disturbances and Two-Day Cyclone Formation Chance: < 40% 40-60% > 60%
Tropical or Sub-Tropical Cyclone: Depression Storm Hurricane
 Post-Tropical Cyclone Remnants

[Active Storms](#) | [Marine Forecasts](#)

[2-Day Graphical Tropical Weather Outlook](#) | [5-Day Graphical Tropical Weather Outlook](#)



Note: The cone contains the probable path of the storm center but does not show the size of the storm. Hazardous conditions can occur outside of the cone.



Tropical Storm Harvey

Friday August 18, 2017
 8 AM AST Intermediate Advisory 4A
 NWS National Hurricane Center

Current information: x

Center location 13.0 N 60.3 W
 Maximum sustained wind 40 mph
 Movement W at 18 mph

Forecast positions:

● Tropical Cyclone ○ Post/Potential TC
 Sustained winds: D < 39 mph
 S 39-73 mph H 74-110 mph M > 110 mph

Potential track area:

Day 1-3 Day 4-5

Watches:

Hurricane Trop Stm

Warnings:

Hurricane Trop Stm

Current wind extent:

Hurricane Trop Stm

Sometimes I wonder whether the world is being run by smart people who are putting us on, or by imbeciles who really mean it.

MARK TWAIN

