

# **OVERSEAS GRAIN WEATHER SUMMARY NEXT 10 DAYS**

CANADA SOUTH AMERICA EUROPE  
UKRAINE WEST RUSSIA CHINA

**7 MAY 2017**



LOCATED in Richmond VA

Featured frequently on AGRI-MONEY

**EMAIL WXRISK@VERZION .NET**



@WXRISK.COM



<https://www.facebook.com/WxRisk>

**804 307 8070**



## Who we are

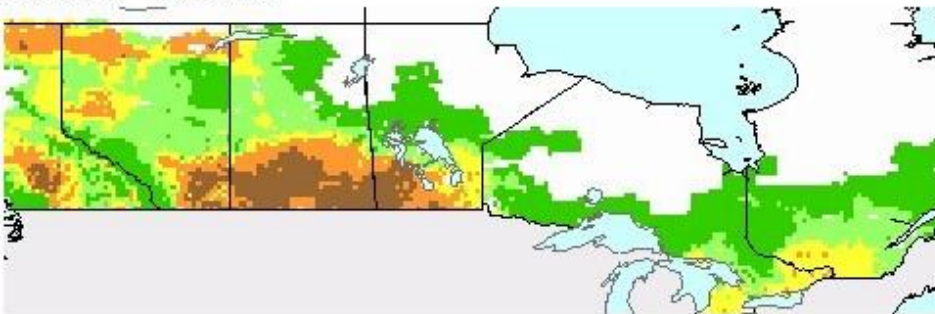
WxRisk is a private, subscription, Weather Forecasting Company. Founded in 1998, the company specializes in providing the most detailed and accurate weather forecasts for Days 3 through 30, as well as seasonal forecasts, for Grain Traders, Farmers, Energy Traders, Construction companies, Oil and Heat associations, Wineries and other businesses impacted by weather. Geographic areas covered include, but are not limited to: The Middle Atlantic region of the U.S., all of the Continental U.S., South America, Europe, Ukraine/Southern and western Russia, Kazakhstan, India, Australia & China. Current and previous clients include large and mid-size commodity trading houses, energy firms, gas and propane companies, ski resorts, individual farmers and business involved in providing transportation and construction services throughout the world.



# CANADA GRAIN



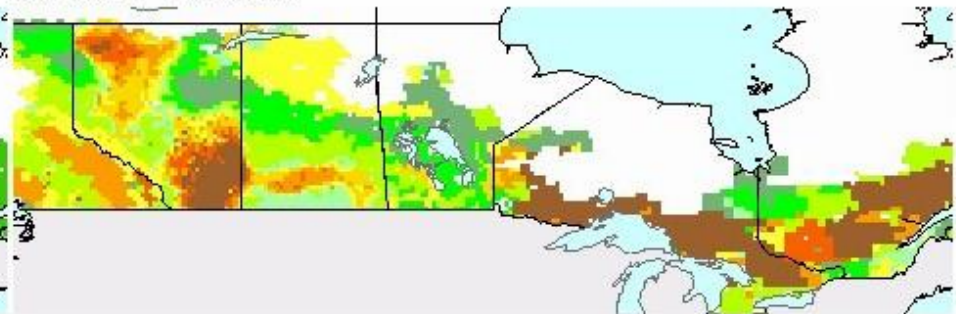
**Surface Soil Moisture (USAF 557th WW)** [View in Google Earth](#)  
04/21/2017 - 04/30/2017



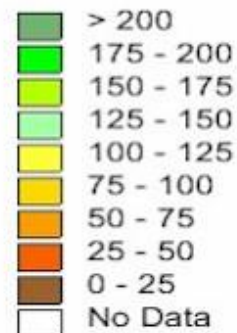
Surface Soil Moisture (mm)



**Subsurface Soil Moisture (USAF 557th WW)** [View in Google Earth](#)  
04/21/2017 - 04/30/2017



Sub-Surface Soil Moisture (mm)





# PRECIP ANOMALIES LAST 7 DAYS

## Prairie Region

Weekly Accumulated Rainfall: Apr 30-May 6, 2017

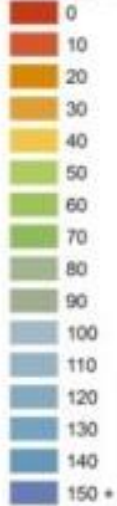
Created by:



Created for:



Accumulated  
Rainfall (mm)



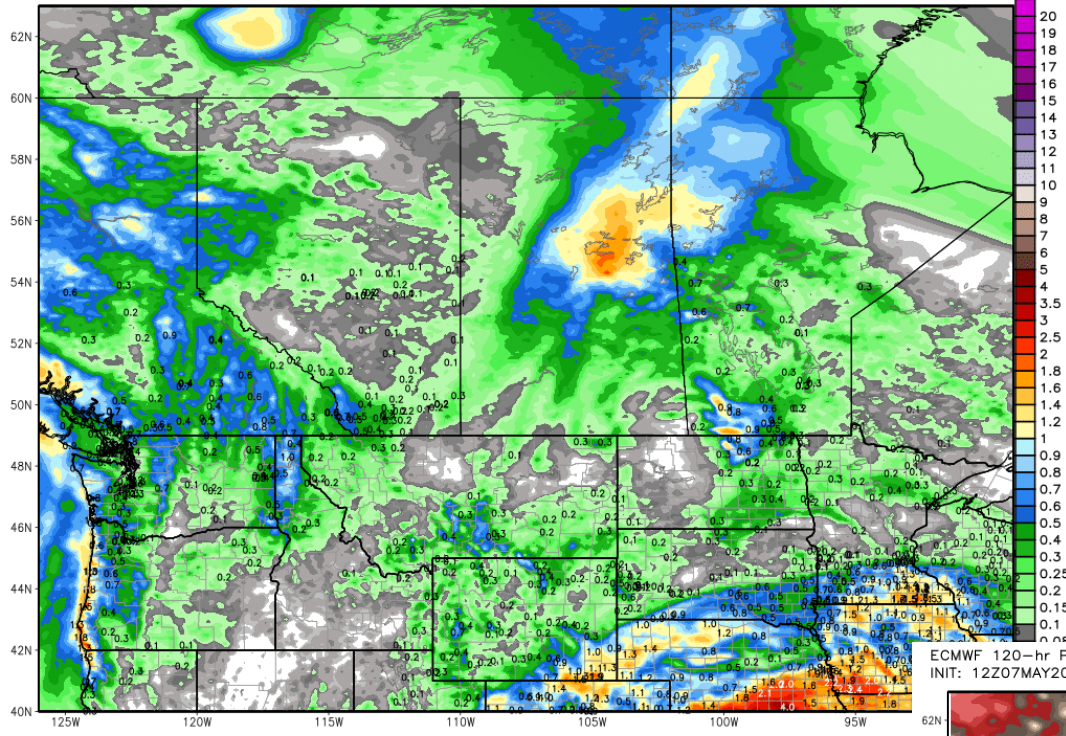
# TEMP ANOMALIES LAST 7 DAYS

## Prairie Region

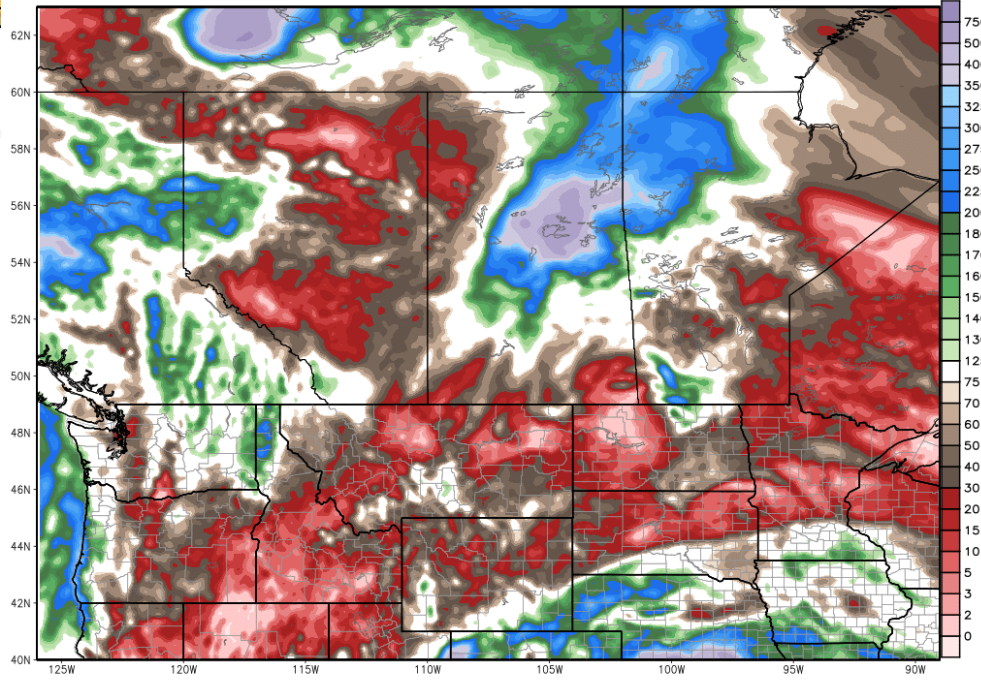
Rainfall: Percent of Normal: Apr 30-May 6, 2017



ECMWF 120-hourly Precipitation [inch] INIT: 12Z07MAY2017 fx: [120] hr --> Fri 12Z12MAY2017  
Total Precipitation [inches] between 12Z07MAY2017 -- 12Z12MAY2017



ECMWF 120-hr Precip Anomaly [% of normal] between 12Z07MAY2017 -- 12Z12MAY2017  
INIT: 12Z07MAY2017 fx: [120] hr --> Fri 12Z12MAY2017

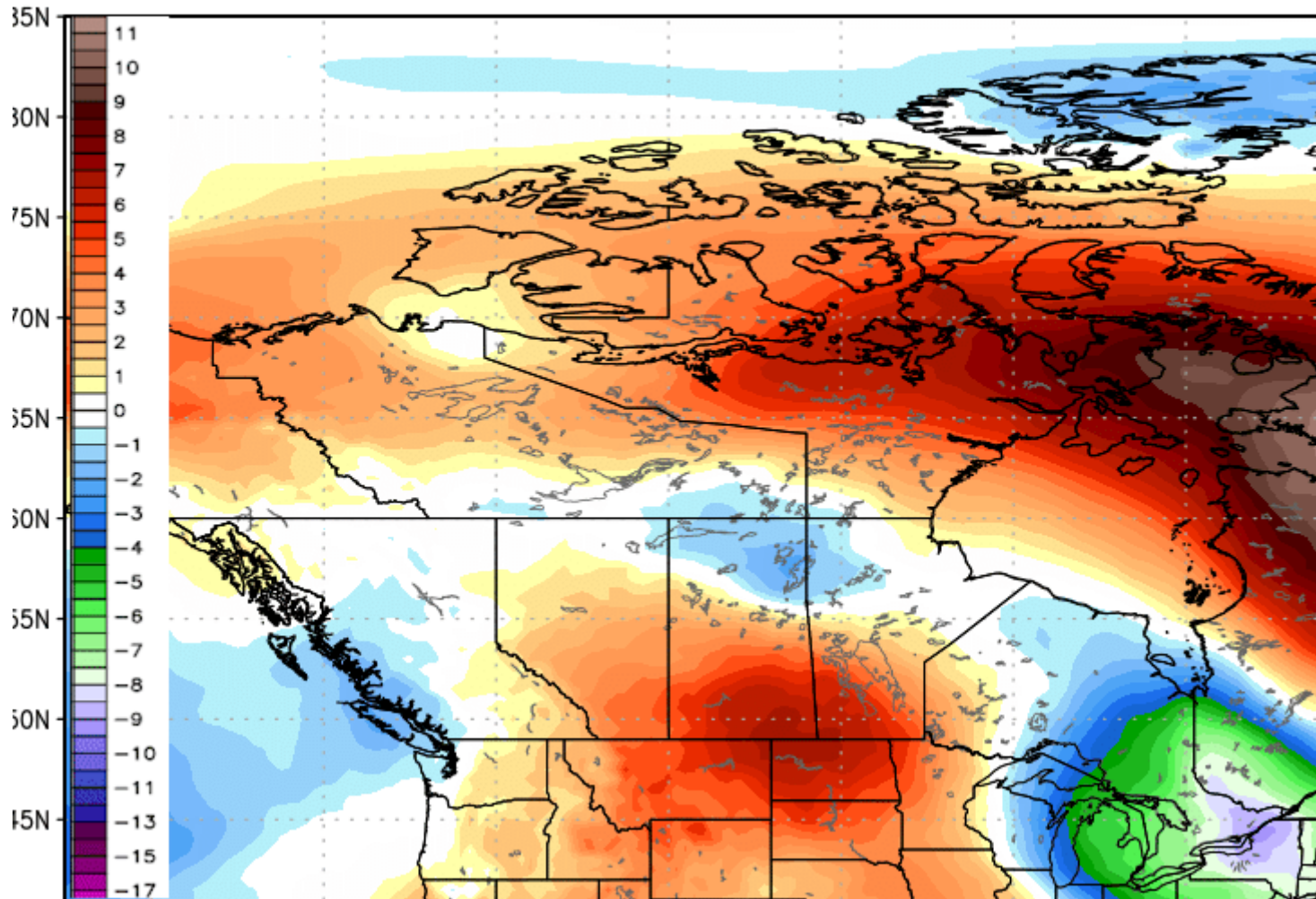


**RAINFALL and RAINFALL ANOMALIES NEXT 5 DAYS LOOKS PRETTY DRY**



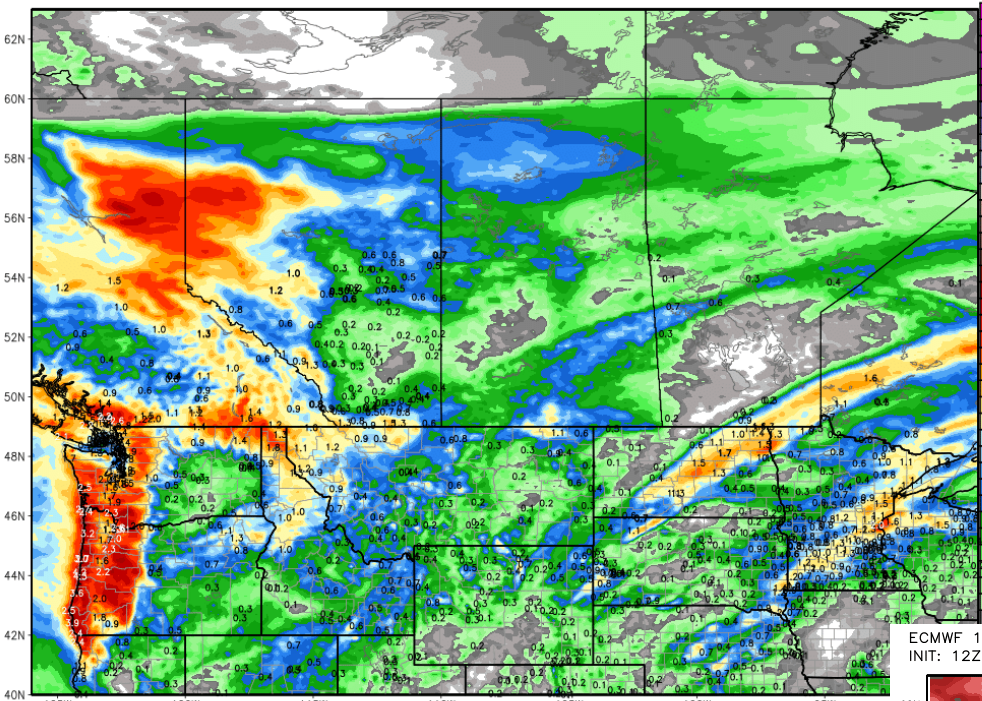
# TEMPS ABOVE NORMAL IN SOUTHERN CANADIAN PLAINS

ECMWF EPS Ensemble Control 850 hPa Temperature Anomaly [°C] fx: [120] hr  
INIT: 12Z07MAY2017 5-day Mean between 12Z07MAY2017 & 12Z12MAY2017

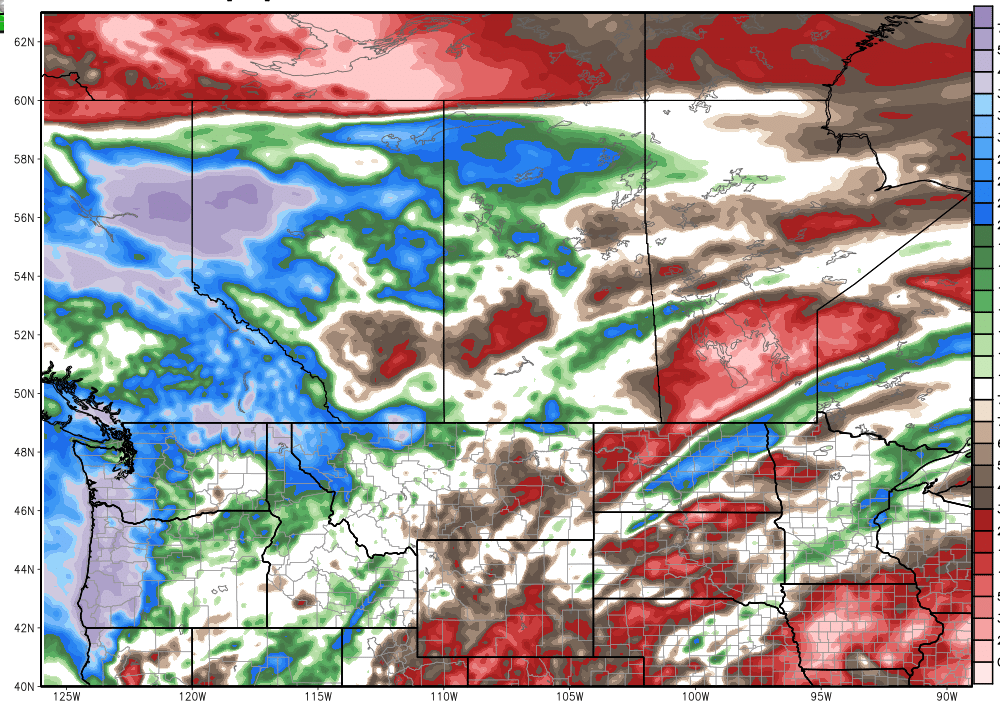


ECMWF 120-hourly Precipitation [inch] INIT: 12Z07MAY2017 fx: [240] hr --> Wed 12Z17MAY2017  
Total Precipitation [inches] between 12Z12MAY2017 -- 12Z17MAY2017

# 6-10DAY RAINFALL and ANOMALIES STILL LOOKS PRETTY DRY



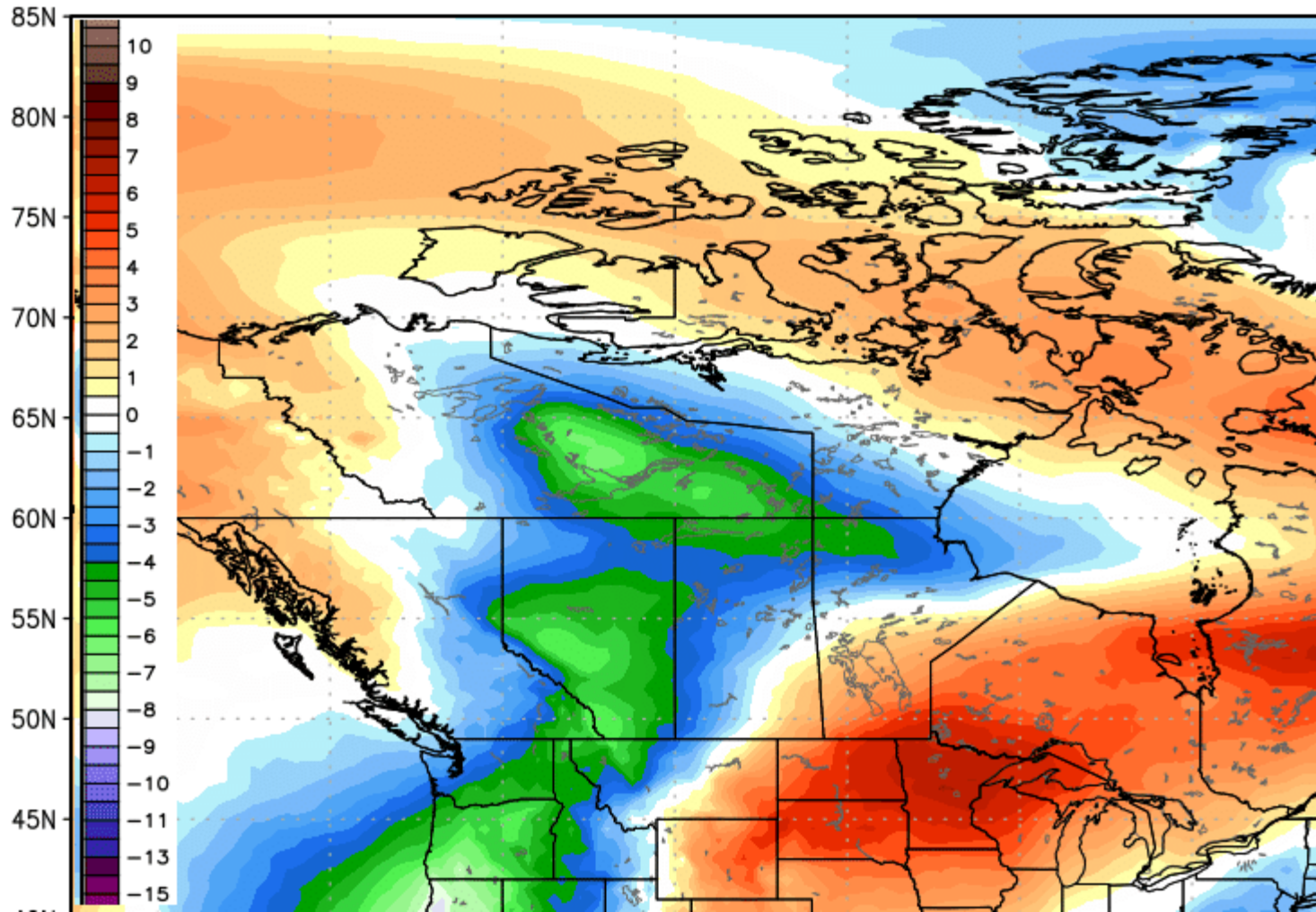
ECMWF 120-hr Precip Anomaly [% of normal] between 12Z12MAY2017 -- 12Z17MAY2017  
INIT: 12Z07MAY2017 fx: [240] hr --> Wed 12Z17MAY2017





# TEMPS BELOW NORMAL over southern Alberta Near Normal over Sask & Above Normal over southern Manitoba

ECMWF EPS Ensemble Control 850 hPa Temperature Anomaly [°C] fx: [252] hr  
INIT: 12Z07MAY2017 5-day Mean between 00Z13MAY2017 & 00Z18MAY2017



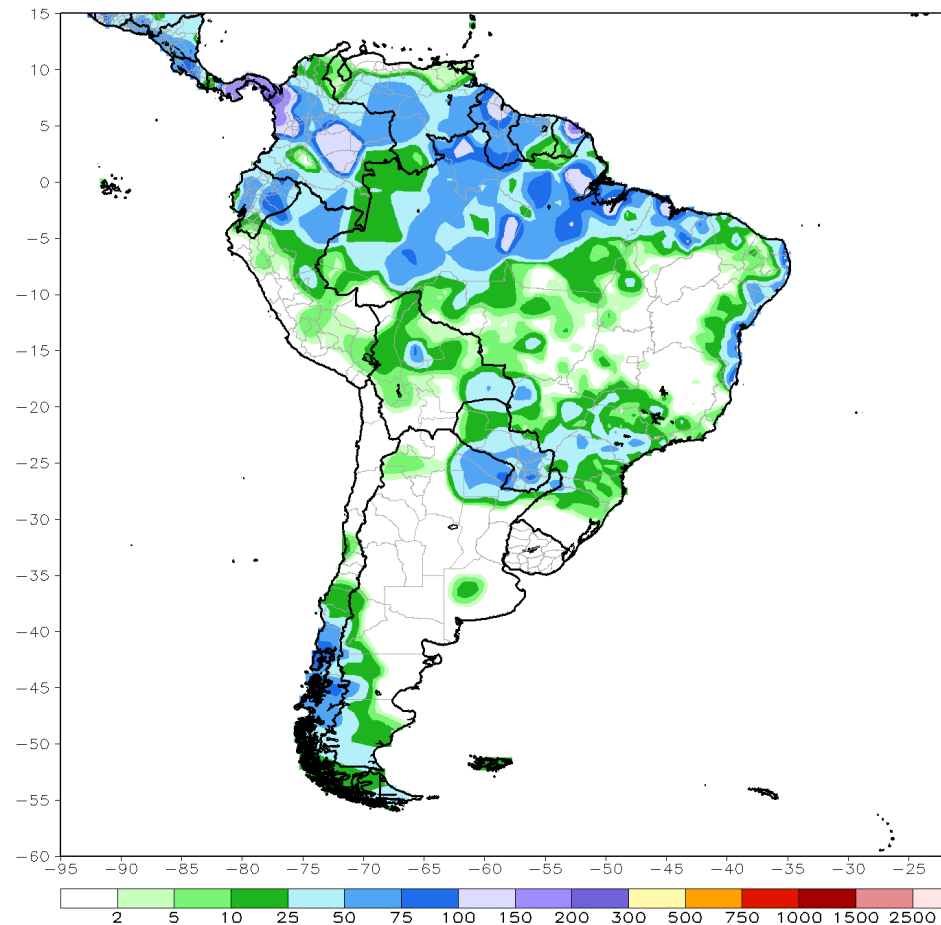


# SOUTH AMERICA

## LAST 7 DAYS RAINFALL and RAINFALL ANOMALIES

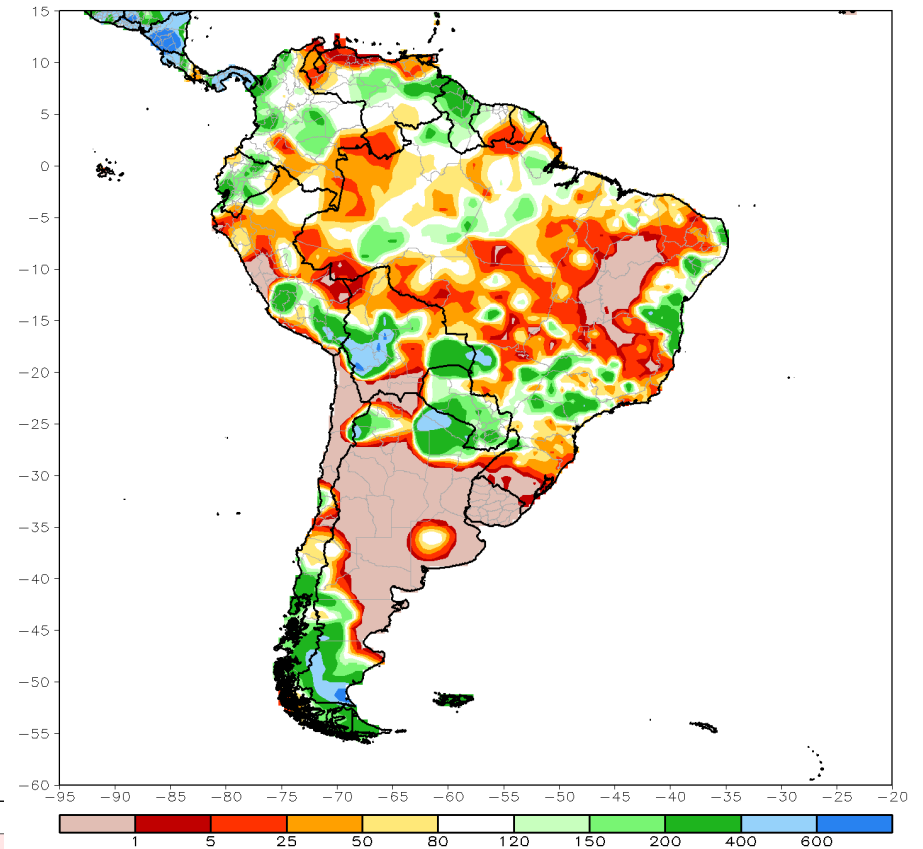
CPC Unified Gauge 7-Day Total Rainfall (mm)

Period: 30Apr2017 - 06May2017



CPC Unified Gauge 7-Day Percent of Normal Rainfall (%)

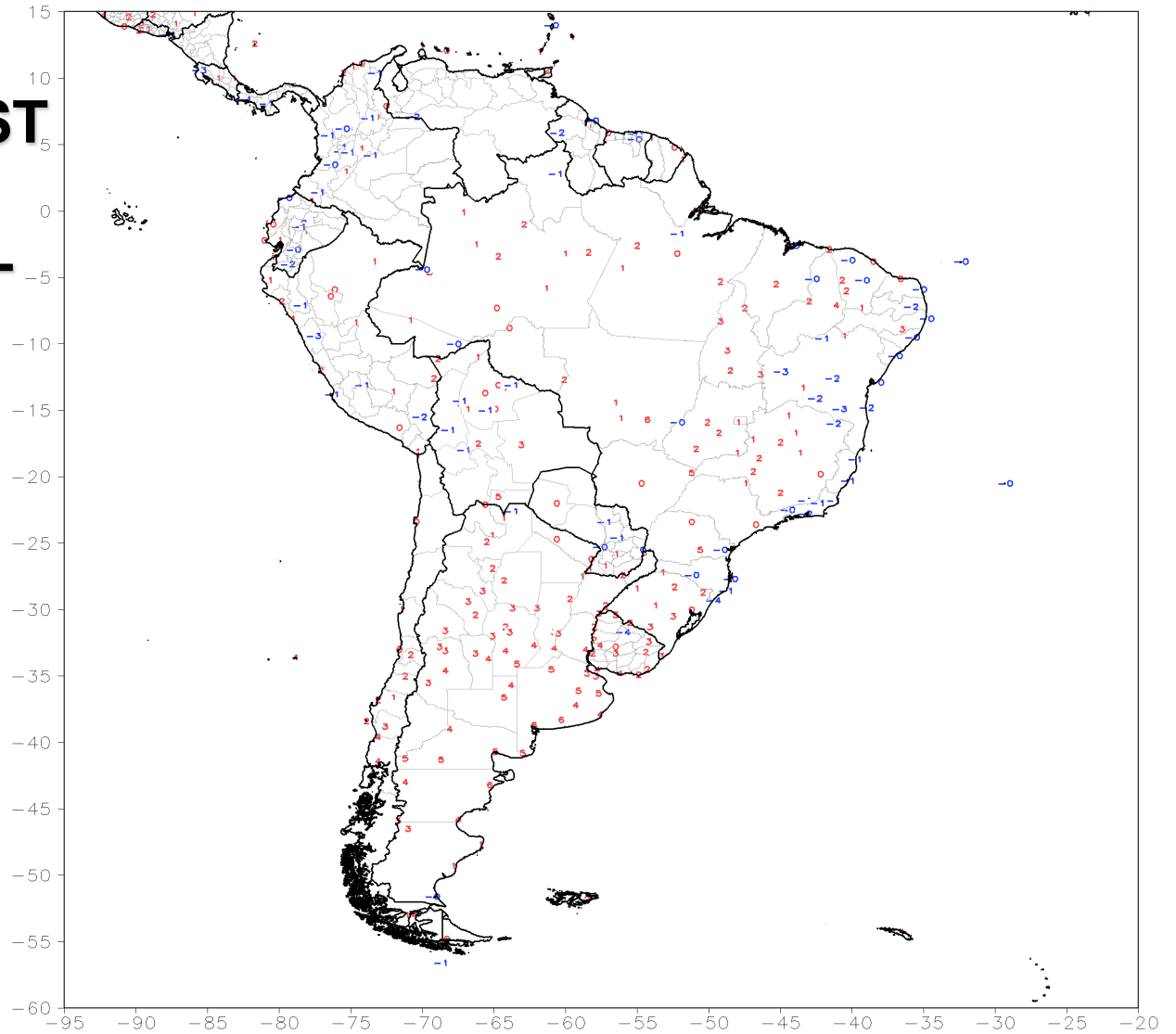
Period: 30Apr2017 - 06May2017



GTS Station Running 7-Day Average Temperature Anomaly (C)

Period: 30Apr2017 - 06May2017

**TEMPS OVER LAST  
7 DAYS MUCH  
ABOVE NORMAL  
OVER  
ARGENTINA**



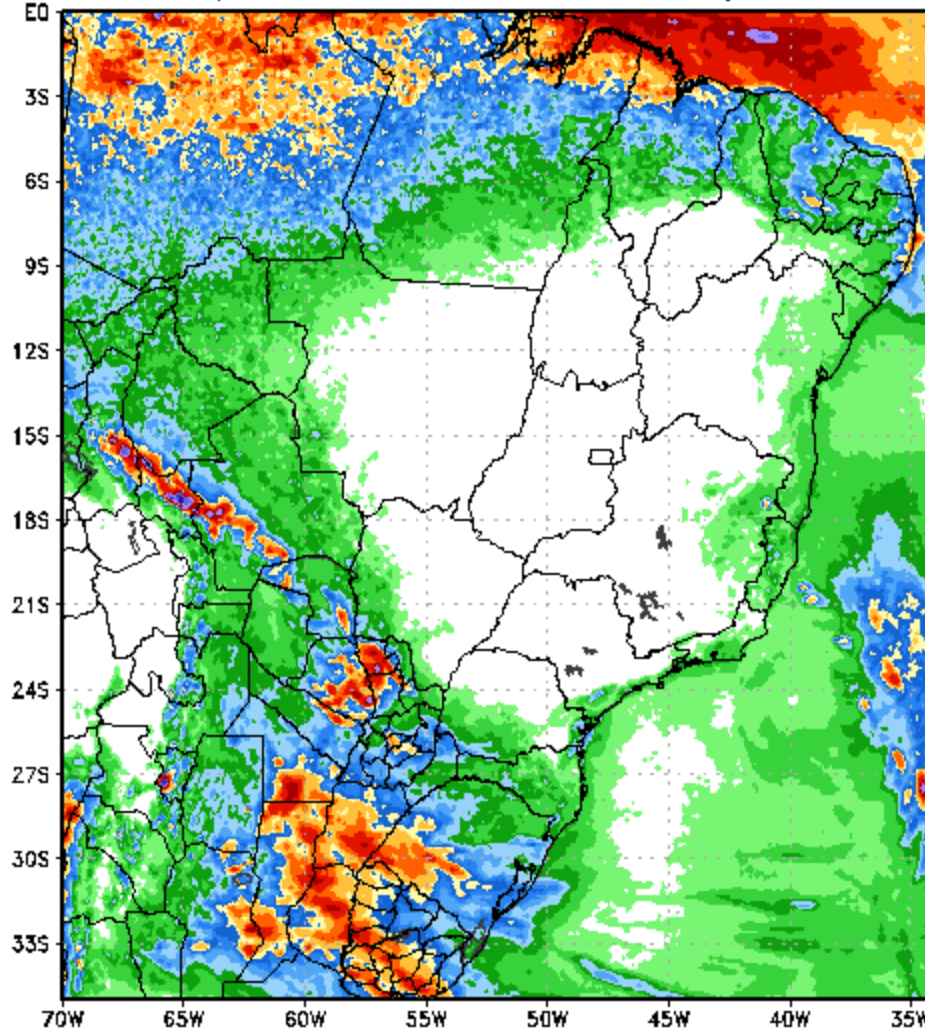
# SIGNIFICANT RAINS 1 to 4"/ 25 -100mm with 75% coverage over central eastern ARG into RGDS & central Paraguay

120 Hour Total Precipitation (in)

Valid: 12z Sun 07 May 2017 - 12z Fri 12 May 2017

ECMWF-MAXRES

Hour: 0 - 120



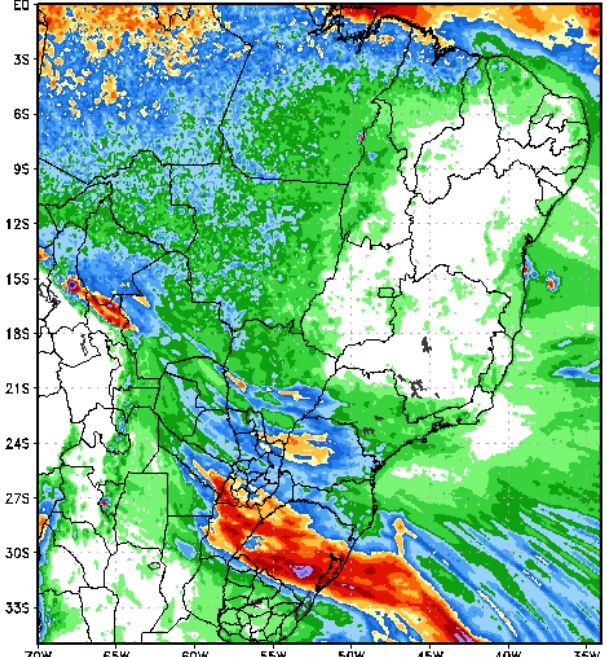
Max: 8.4 in  
Min: 0.0 in

StormVistaWxModels.com

Init: 12z Sun 07 May 2017  
2017-05-07-18:20



120 Hour Total Precipitation (in)  
 Valid: 12z Fri 12 May 2017 - 12z Wed 17 May 2017

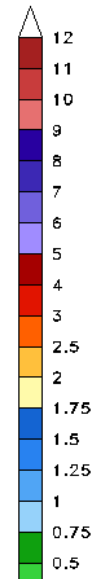


Max: 9.5 in  
 Min: -0.0 in

StormVistaWxModels.com

Init: 12z Sur<sub>2</sub>

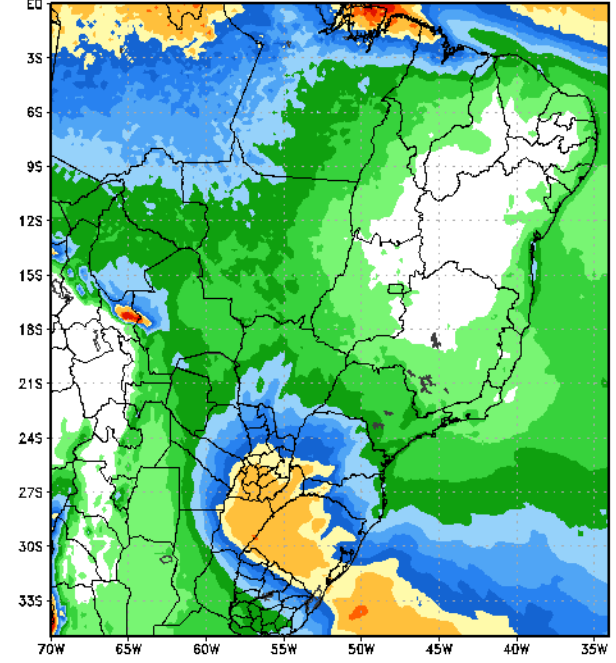
ECMWF-MAXRES  
 Hour: 120 - 240



**EURO & EURO  
 ENSEMBLES 2-5"/50-  
 125mm over RGDS on se  
 Brazil into Corrientes 1-2"/  
 25-50mm over Parana into  
 southern MGDS**

120 Hour Total Precipitation (in)  
 Valid: 12z Fri 12 May 2017 - 12z Wed 17 May 2017

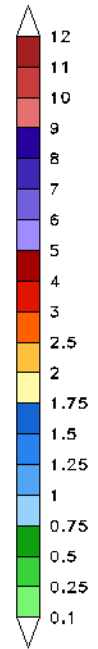
ECMWF-EPS-MAXRES  
 Hour: 120 - 240



Max: 3.9 in  
 Min: -0.0 in

StormVistaWxModels.com

Init: 12z Sun 07 May 2017  
 2017-05-07-19:41



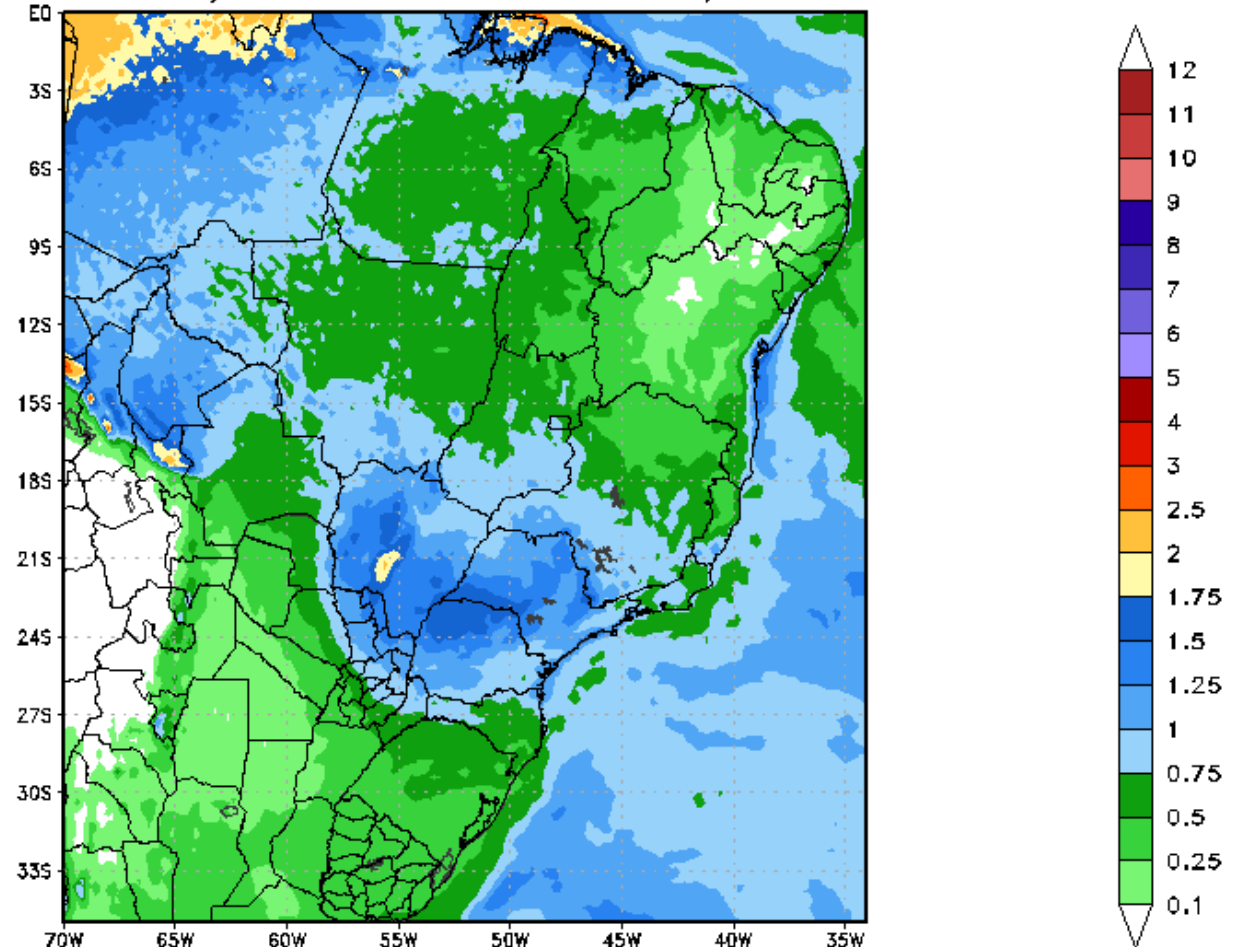
# 11-15 DAY= MDERATE RAINS over 75% of MGDS – SAO PAULO – PARANA into msouthern Goias Minas Gerais

120 Hour Total Precipitation (in)

ECMWF-EPS-MAXRES

Valid: 12z Wed 17 May 2017 – 12z Mon 22 May 2017

Hour: 240 – 360



Max: 3.1 in  
Min: -0.0 in

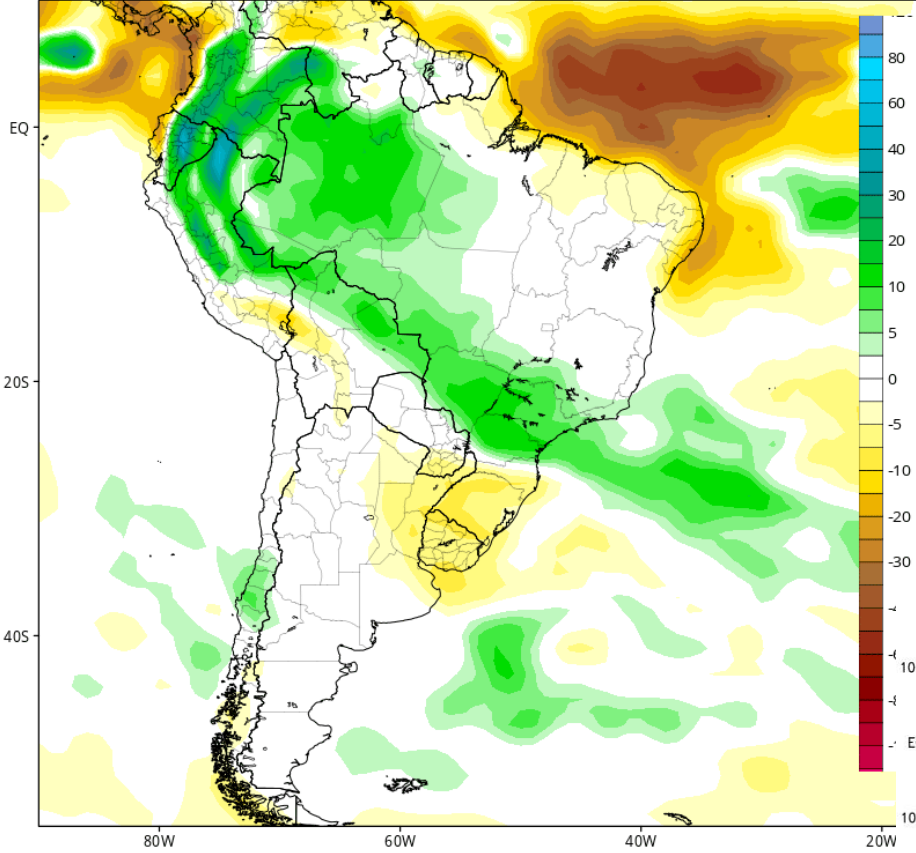
StormVistaWxModels.com

Init: 12z Sun 07 May 2017  
2017-05-07-20:01

CFSv2 Accumulated Precip. Anomaly (mm) from 00z19May2017 to 00z26May2017 (Days 15-21)

Average of last 48 forecasts (12 runs x 4 members)

Init: 06z May 02 2017 through 00z May 05 2017

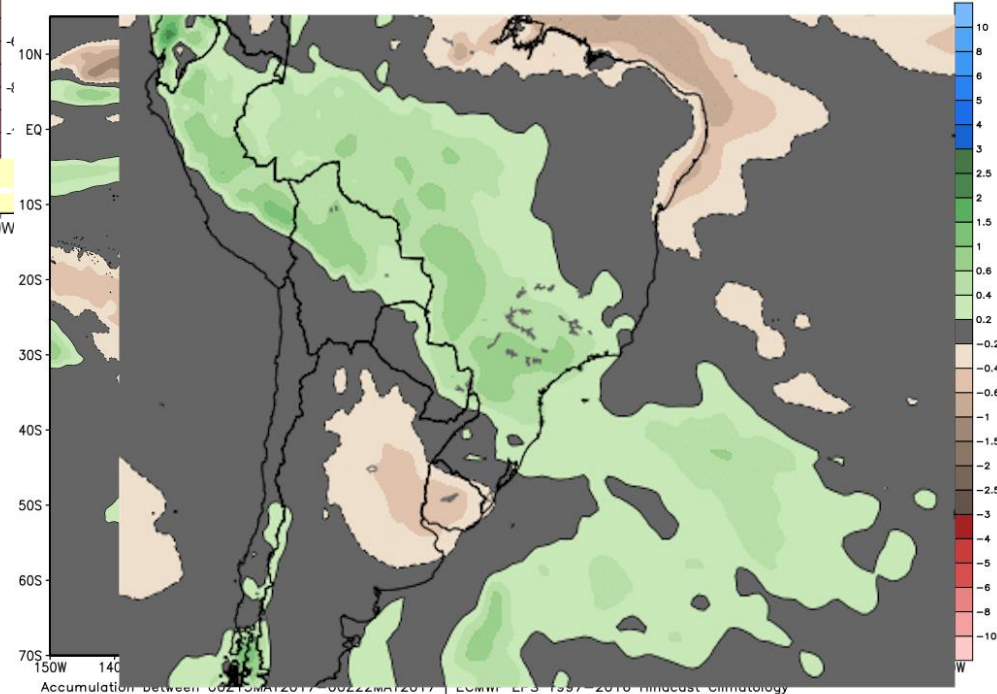


# WEEK 3 CFS & EURO PRETTY OVER southern Mato Grosso MGDS PARANA SAO PAULO

ECMWF EPS Ensemble Mean 7-day Avg Precipitation Anomaly [inch]

Init: 00Z04MAY2017 -- [216] hr --> Valid on Mon 00Z22MAY2017 Day 2 - Day 9

Min|Max Anom: -7.1 | 4.3 inch



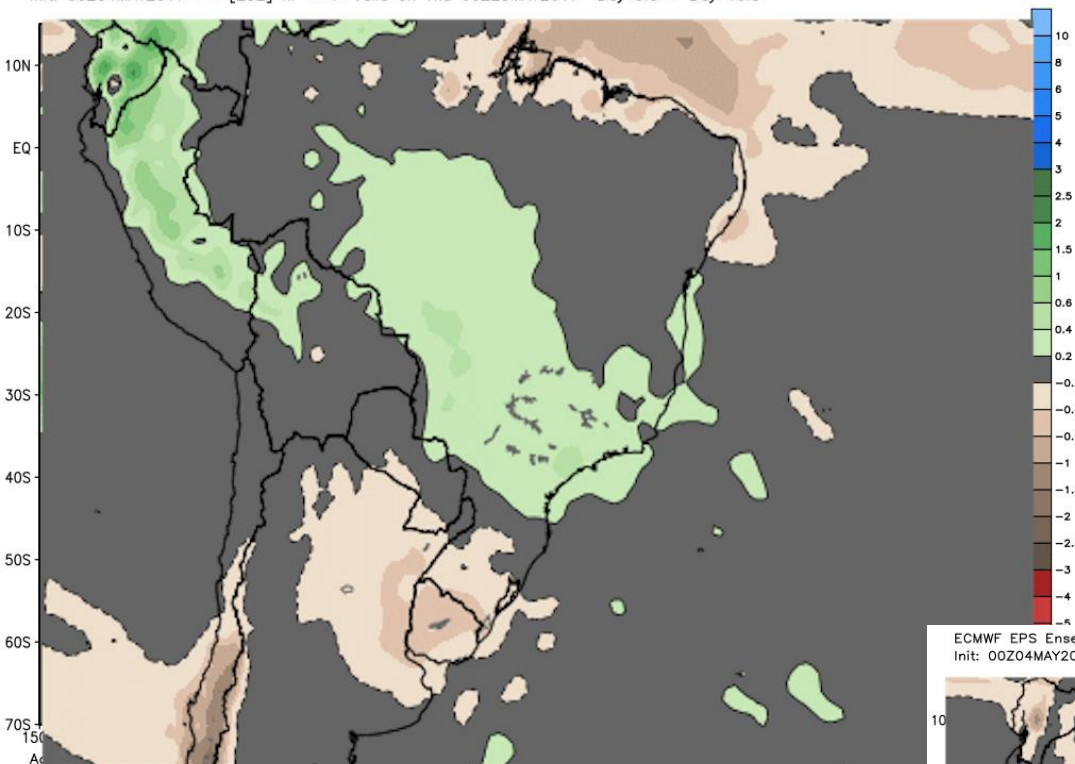
Accumulation between 00z19May2017 - 00z22May2017 | ECMWF EPS 1997 - 2016 hindcast climatology



ECMWF EPS Ensemble Mean 7-day Avg Precipitation Anomaly [inch]

Init: 00Z04MAY2017 -- [252] hr --> Valid on Thu 00Z25MAY2017 Day 3.5 - Day 10.5

Min|Max Anom: -10.0 | 5.0 inch

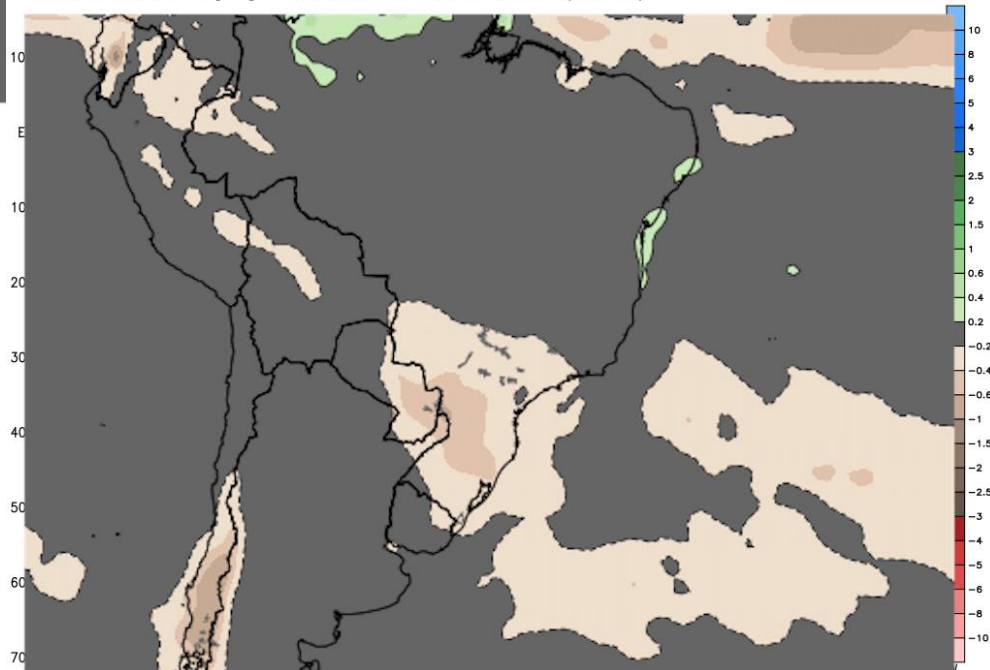


# WEEK 3 STILL WET OVER SE & WESTERN BRAZIL

ECMWF EPS Ensemble Mean 7-day Avg Precipitation Anomaly [inch]

Init: 00Z04MAY2017 -- [336] hr --> Valid on Thu 00Z01JUN2017 Day 7 - Day 14

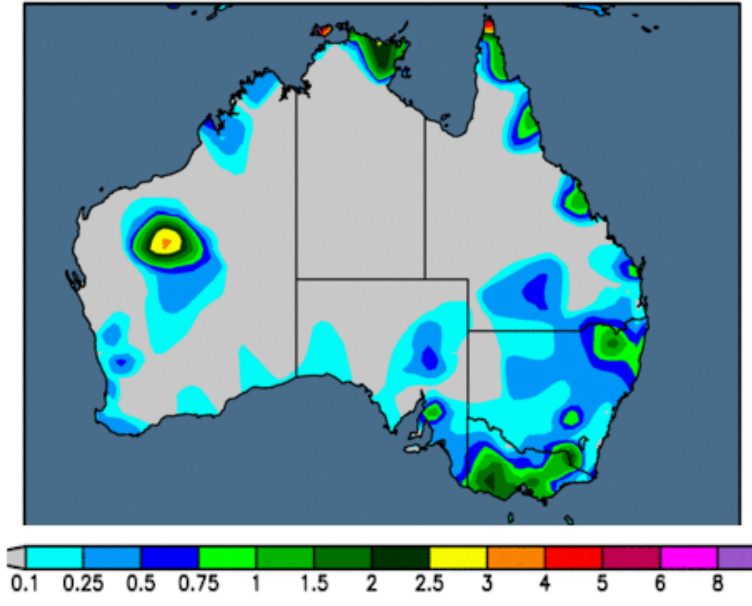
Min|Max Anom: -3.9 | 3.1 inch



# AUSTRALIA

14-day Precipitation Analysis

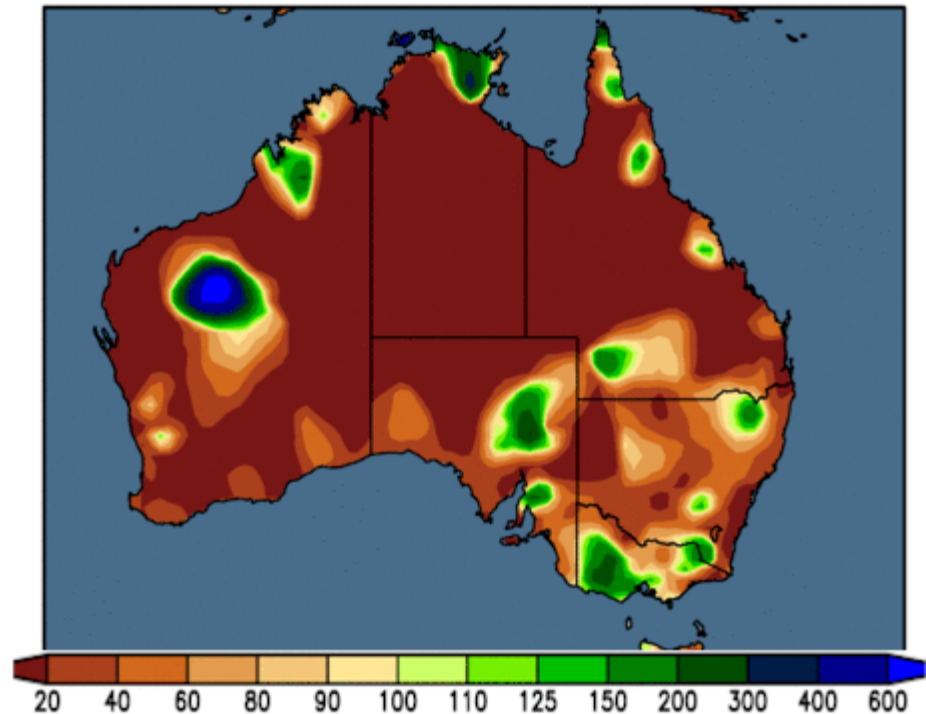
Observed precipitation (inches) through 12 UTC 6 May 2017



**Good rains over Victoria to 3"/ 75mm - BUT Much Lighter over NSW...100% Dry in sw Australia**

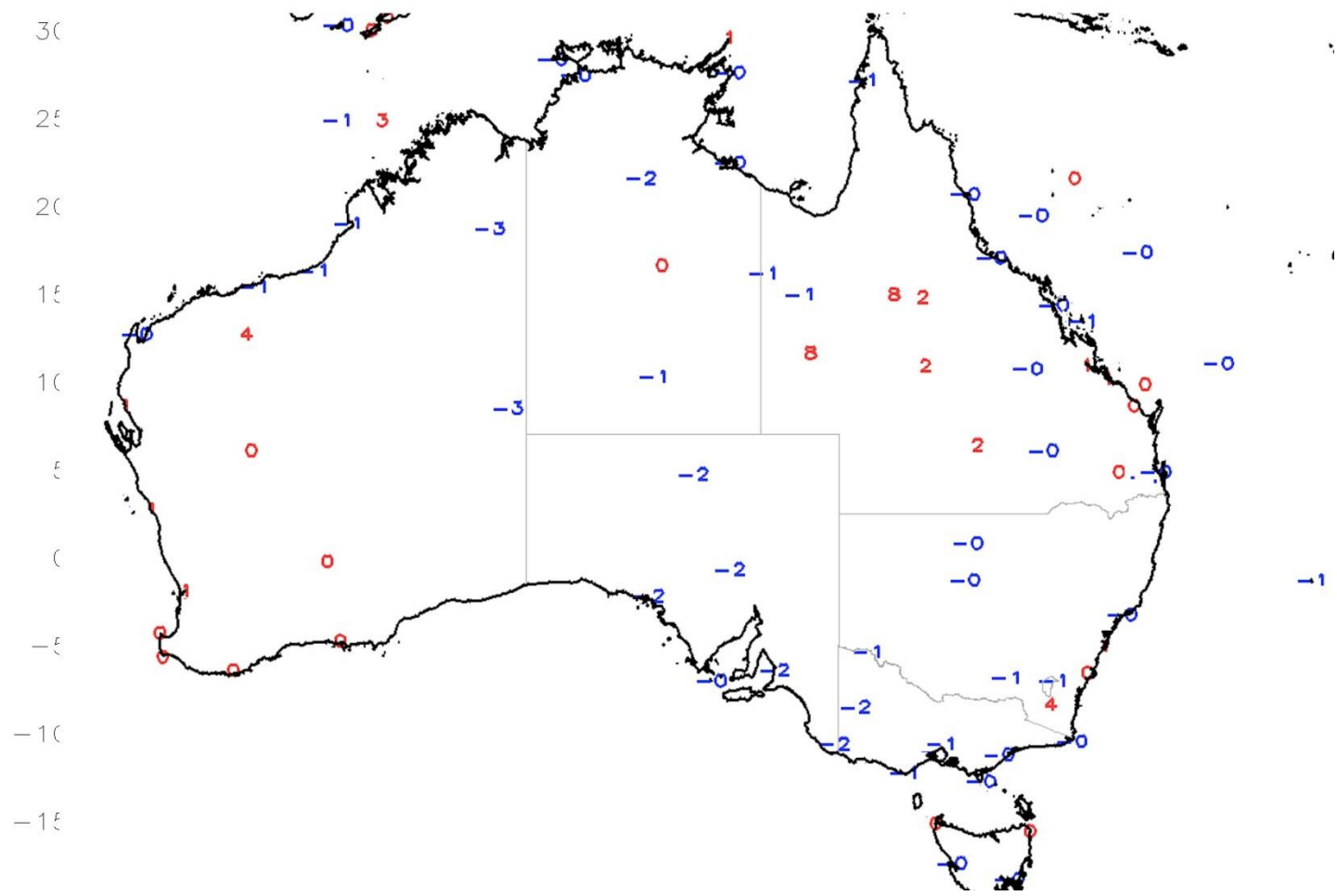
14-day Precipitation Analysis

Percent of normal through 12 UTC 6 May 2017



# GTS Station Running 7-Day Average Temperature Anomaly (C)

Period: 30Apr2017 - 06May2017

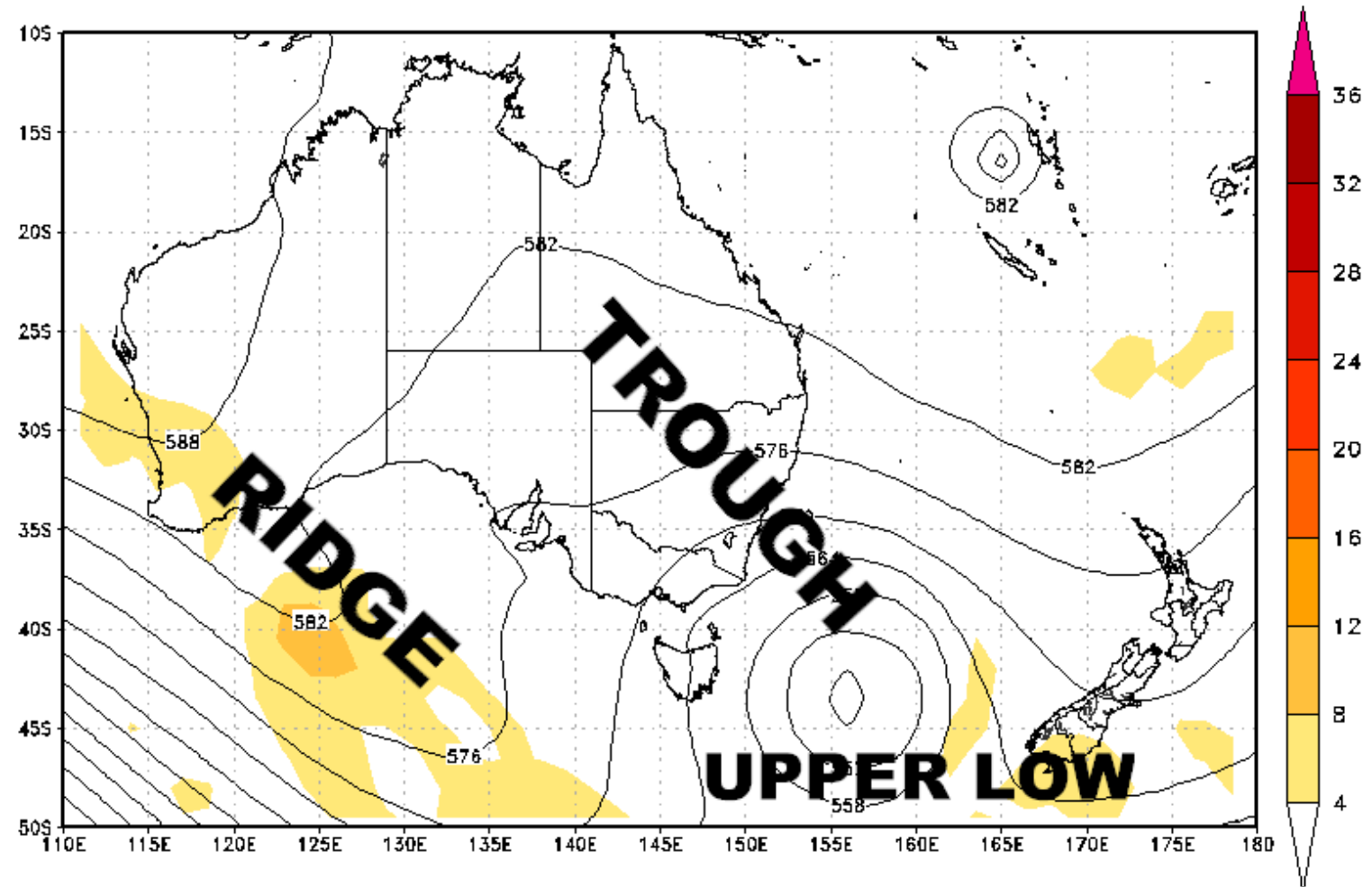




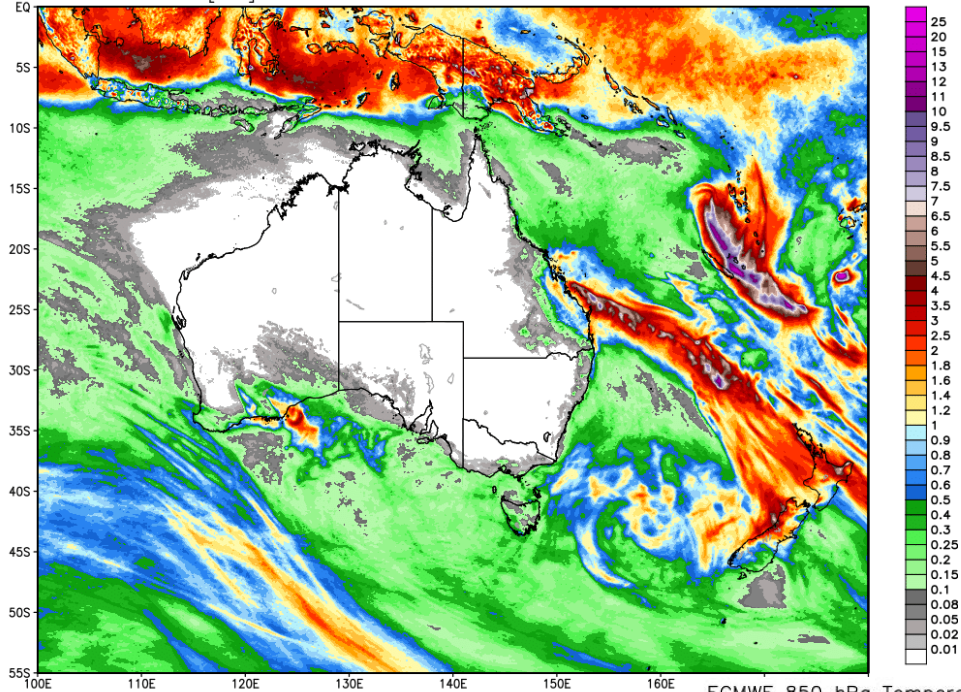
# CURRENT JET STREAM -- note the large Upper Low that has just moved off the se Aus coast and Ridge over sw Aus

500 mb Height & Vorticity  
Valid: 15z Sun 07 May 2017

ECMWF-EPS  
Hour: 3

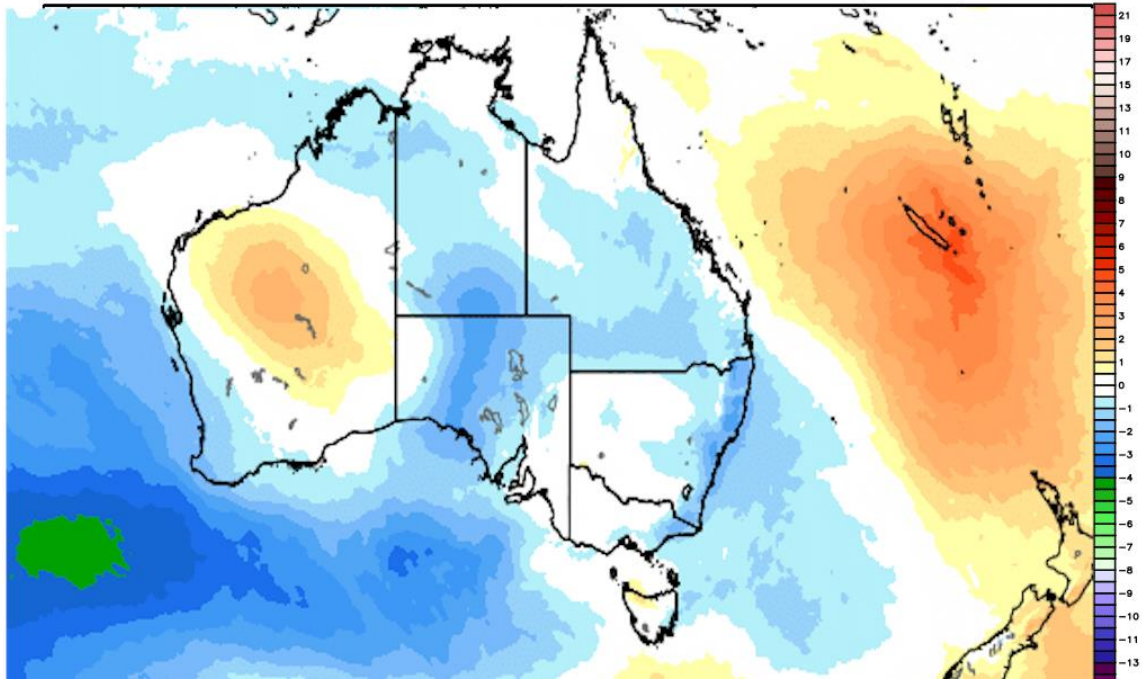


ECMWF Total Precip [inch] between 12Z07MAY2017 -- 12Z12MAY2017  
INIT: 12Z07MAY2017 fx: [120] hr --> Fri 12Z12MAY2017



**1-5 DAY RAINFALL and  
TEMP ANOMALIES--  
STILL LOOKS PRETTY  
DRY BUT COOL OVER  
MUCH OF SOUTH  
CENTRAL Aus & se areas**

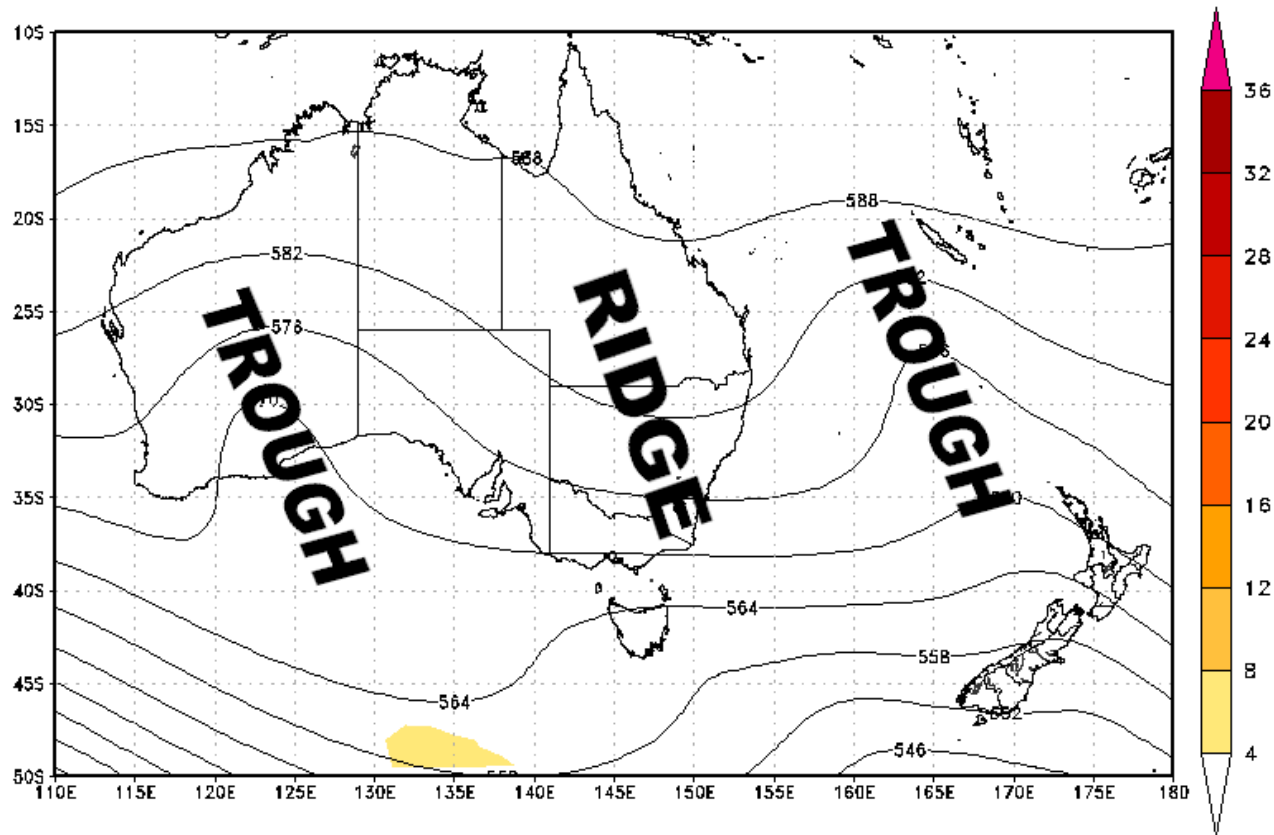
ECMWF 850 hPa Temperature Anomaly [°C] fx: [120] hr --> Fri 12Z12MAY2017 -13.8° | 6.1°C  
INIT: 12Z07MAY2017 5-day Mean between 12Z07MAY2017 & 12Z12MAY2017 Day 0 - Day 5



# THAT RIDGE OVER WESTERN AUS MOVES INTO EASTERN AUS ... WHILE WEAK TROUGH MOVES INTO SW AUS

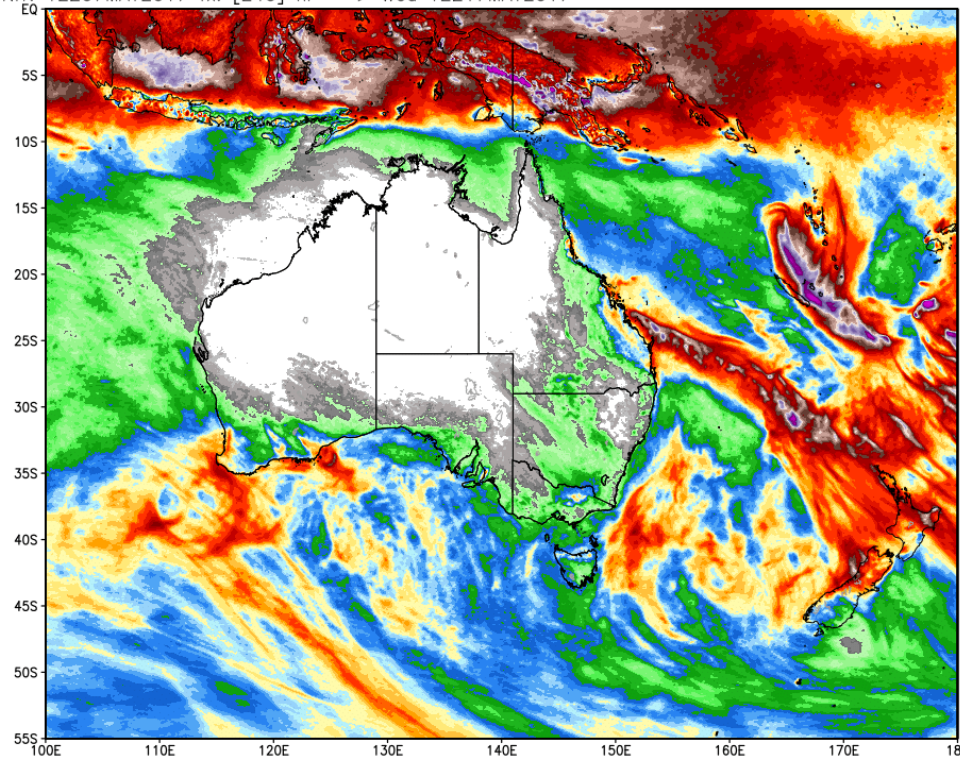
500 mb Height & Vorticity  
Valid: 12z Thu 11 May 2017

ECMWF-EPS  
Hour: 96

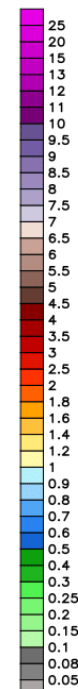




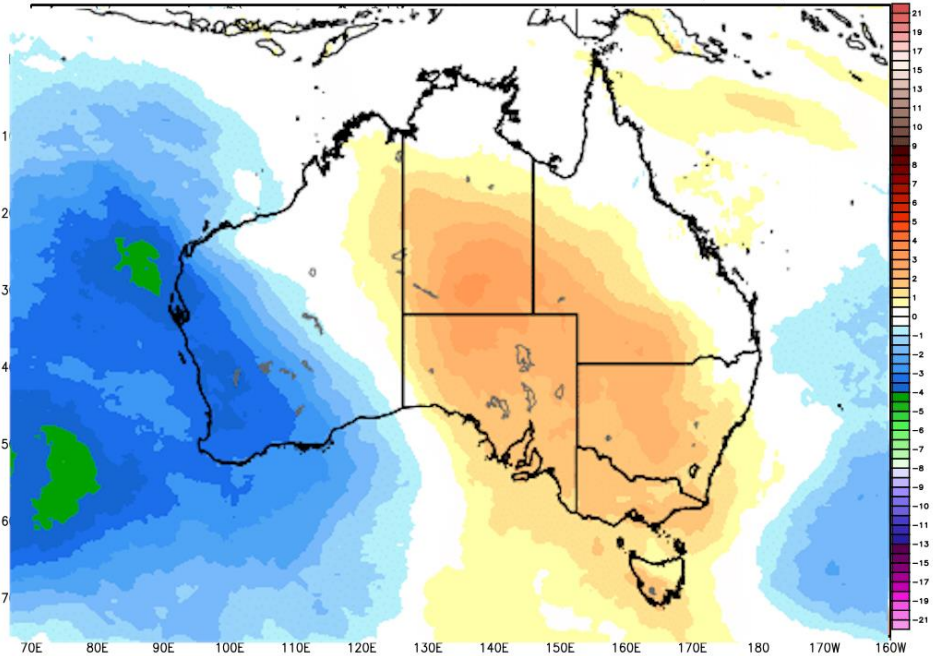
ECMWF Total Precip [inch] between 12Z07MAY2017 - 12Z17MAY2017  
INIT: 12Z07MAY2017 fx: [240] hr --> Wed 12Z17MAY2017



# 6-10D RAINFALL & TEMPS ANOMALIES - some rain over far sw AUS along with cool temps- warmer over all of se third of AUS



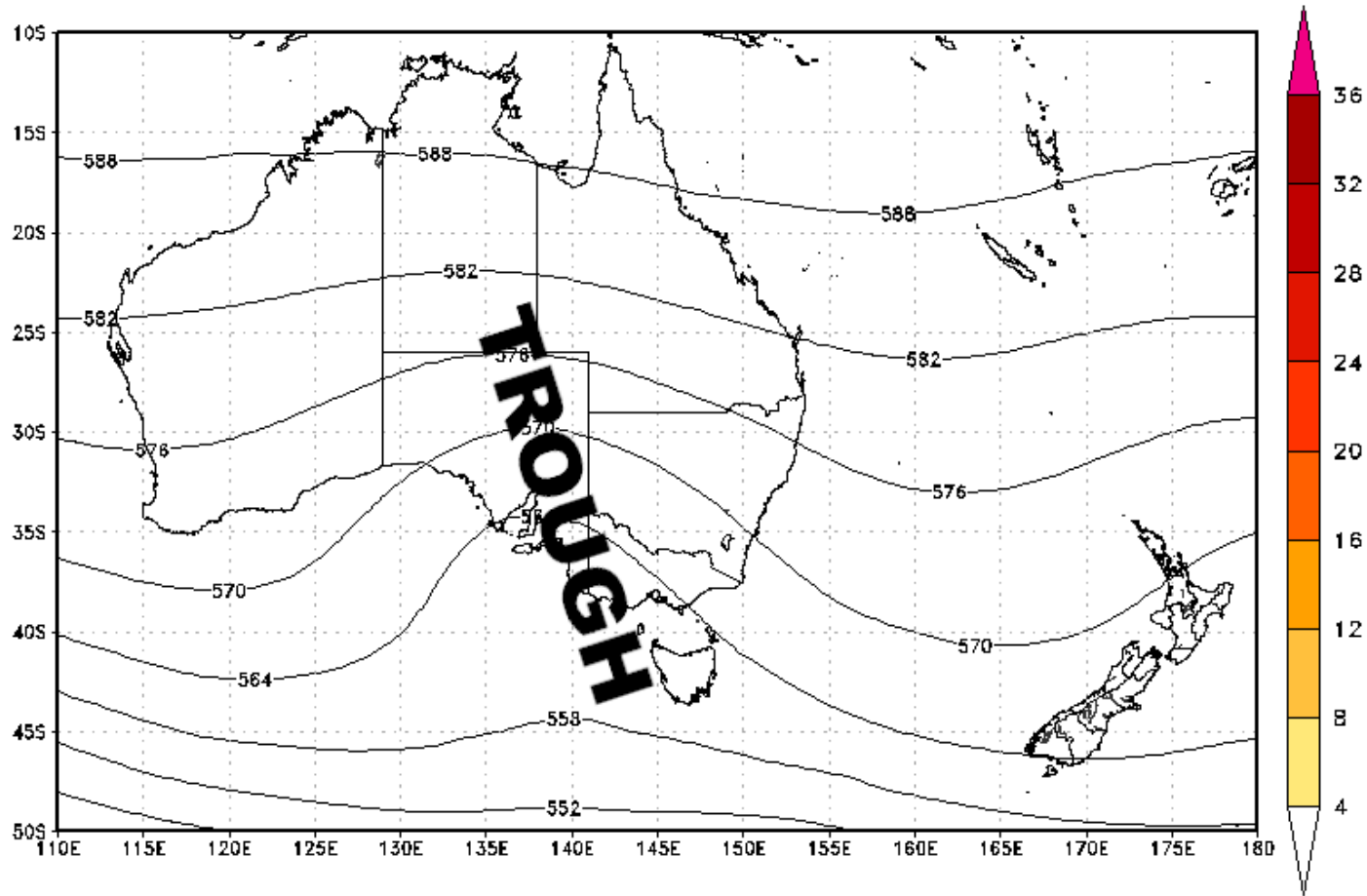
ECMWF 850 hPa Temperature Anomaly [°C] fx: [240] hr --> Wed 12Z17MAY2017 -12.7\* | 6.2°C  
INIT: 12Z07MAY2017 5-day Mean between 12Z12MAY2017 & 12Z17MAY2017 Day 5 - Day 10



# DAY 11 HEY STREAM – TROUGH OVER EASTERN AUS = LOOKS RAINY

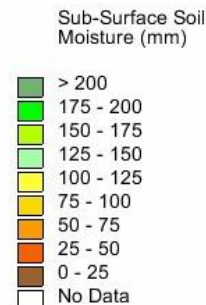
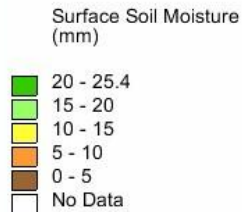
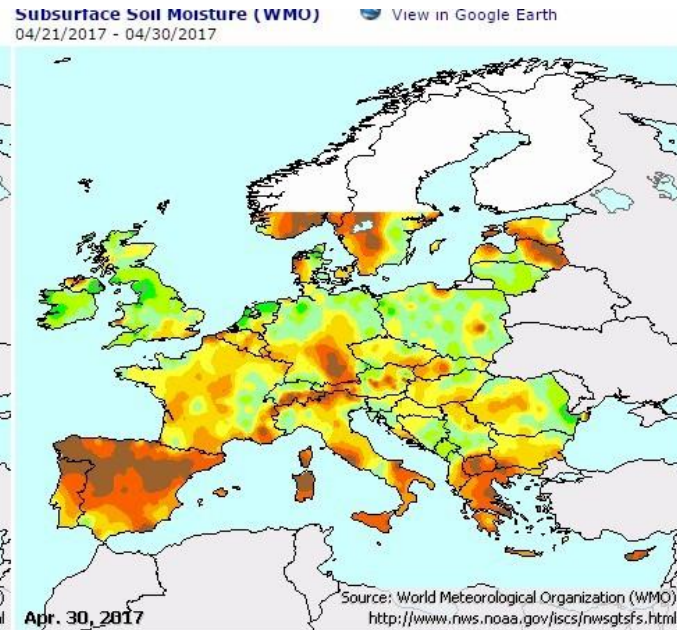
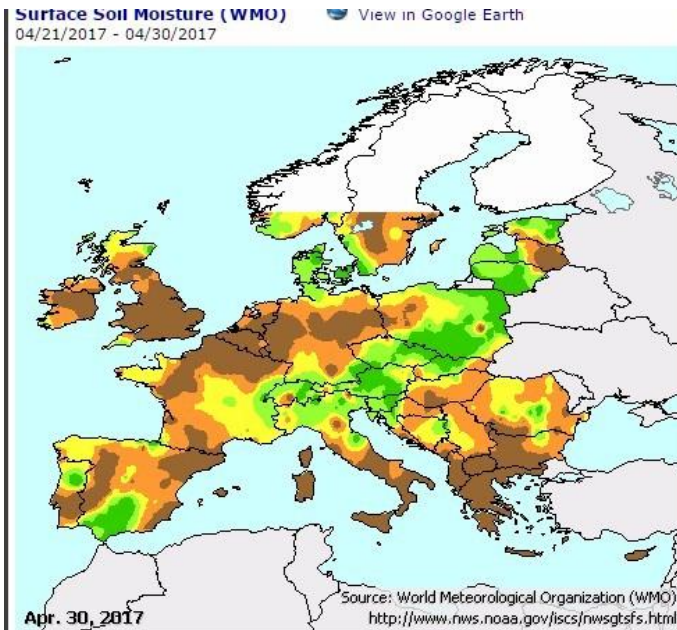
500 mb Height & Vorticity  
Valid: 00z Thu 18 May 2017

ECMWF-EPS  
Hour: 252



# EUROPE & UKRAINE WESTERN RUSSIA

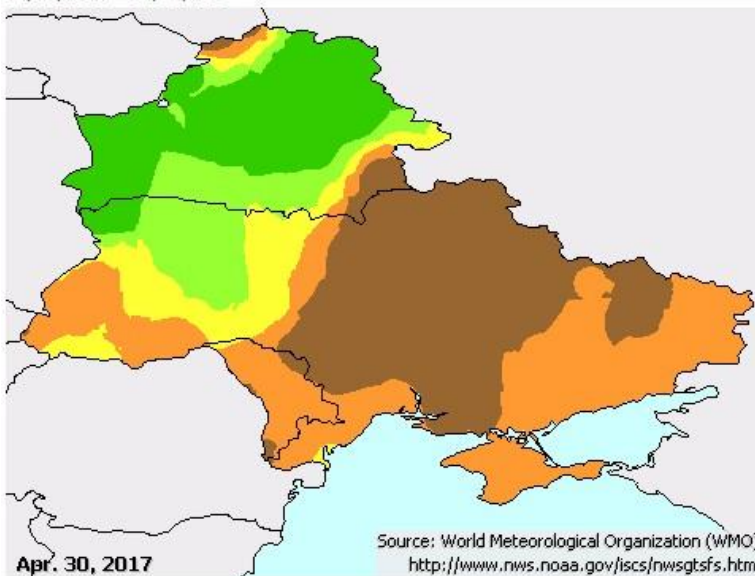
**SPIL MOSTIURE - note Dryness over north Spain  
France much of Germany England -- wet over  
Poland Hungary**



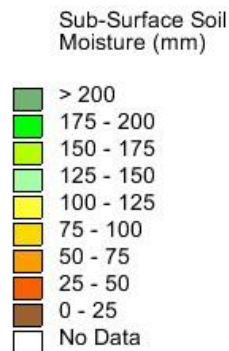
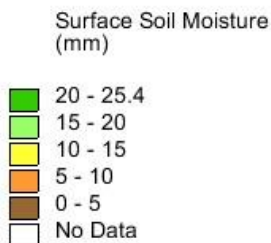
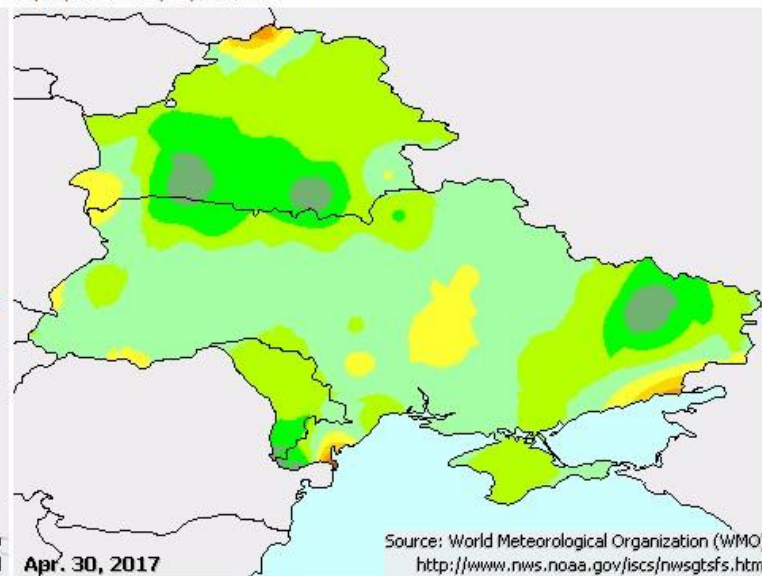


# CENTRAL & EASTERN UKRAINE DRY AT THE SURFACE BUT GOOD SUB SURFACE MOISTURE

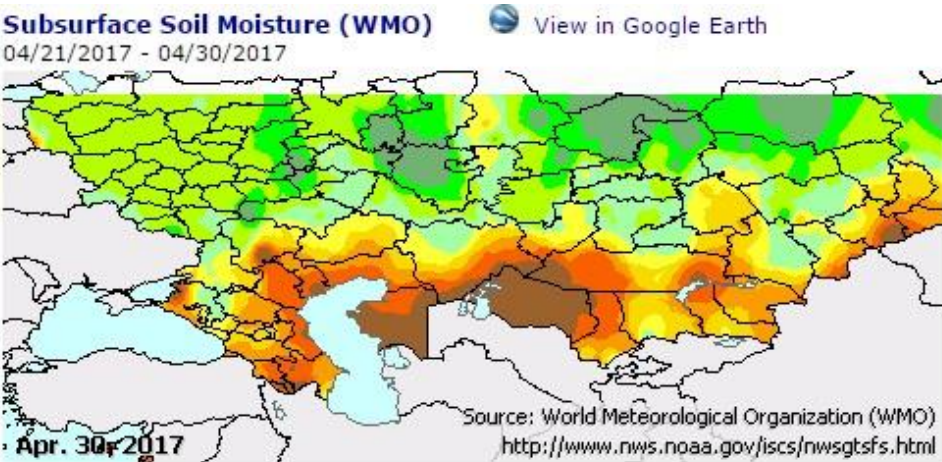
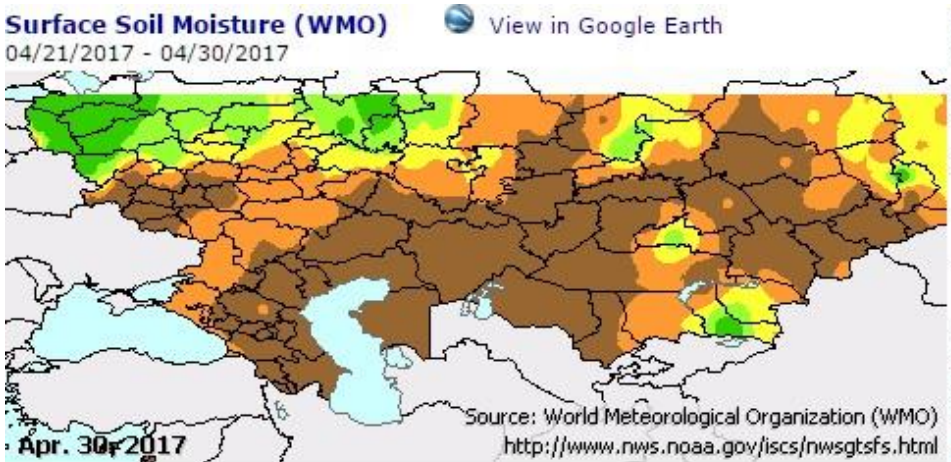
Surface Soil Moisture (WMO) [View in Google Earth](#)  
04/21/2017 - 04/30/2017



Subsurface Soil Moisture (WMO) [View in Google Earth](#)  
04/21/2017 - 04/30/2017



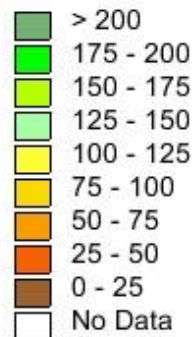
# VOLGA & SOUTHERN DISTRICT FAIRLY DRY SURFACE BUT DECENT SUB SURFACE MOISTURE



Surface Soil Moisture (mm)

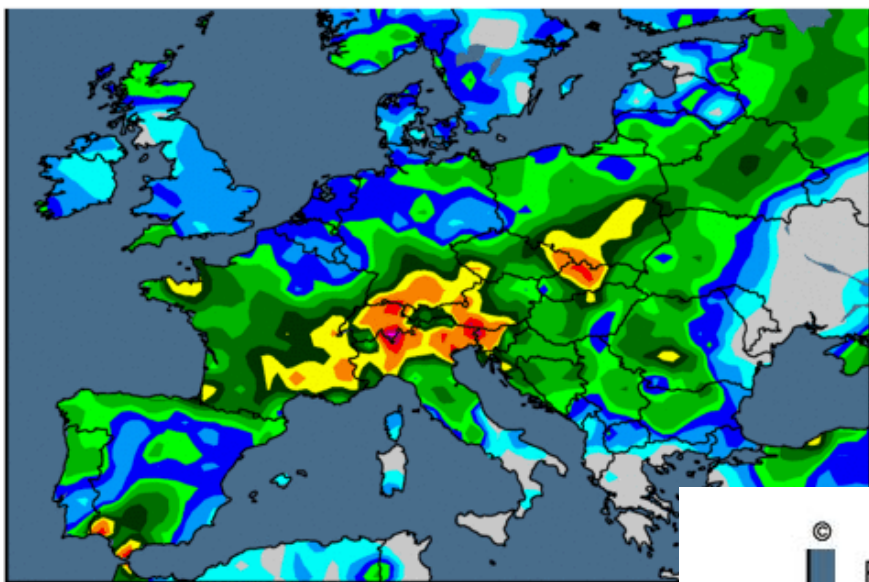


Sub-Surface Soil Moisture (mm)



# 14-day Precipitation Analysis

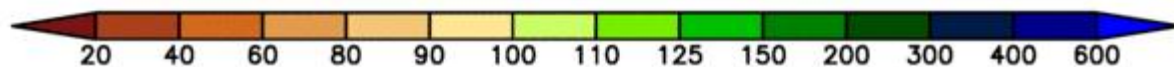
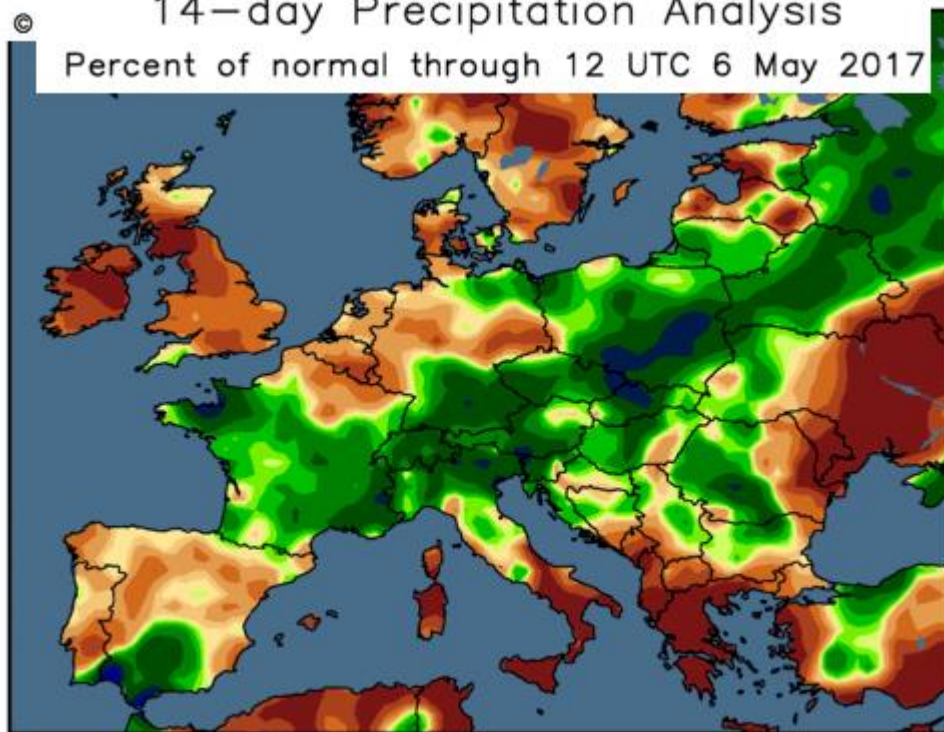
Observed precipitation (inches) through 12 UTC 6 May 2017



**GOOD RAINS** last 14 days  
much of FR south GER  
and all of eastern  
**EUROPE**

# 14-day Precipitation Analysis

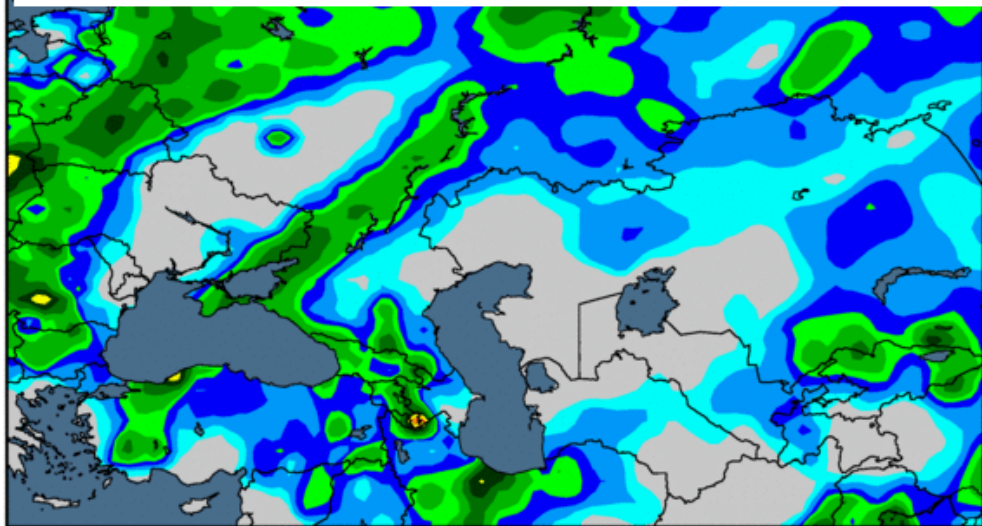
Percent of normal through 12 UTC 6 May 2017





# 14-day Precipitation Analysis

Observed precipitation (inches) through 12 UTC 6 May 2017

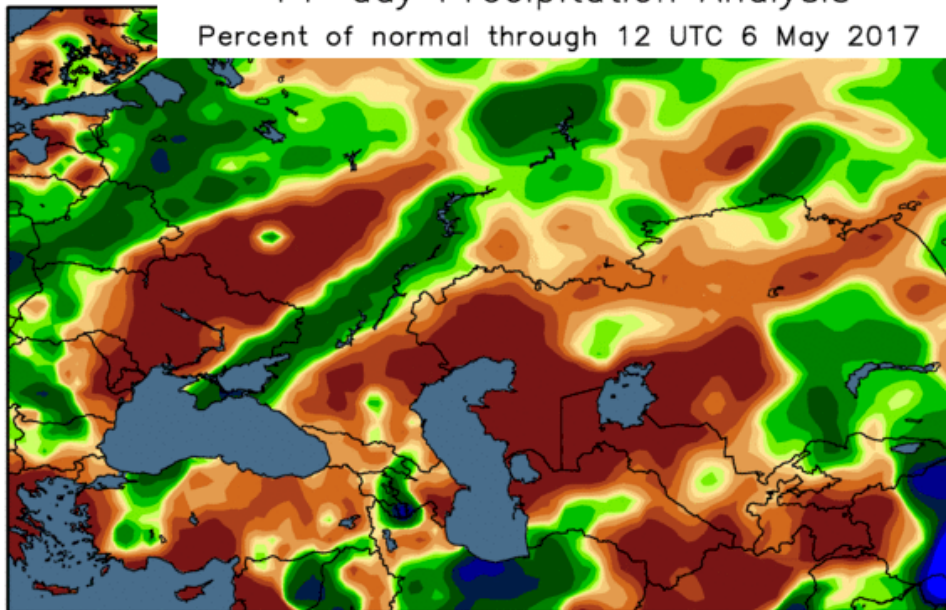


0.1 0.25 0.5 0.75 1 1.5 2 2.5 3 4 5 6 8 10

**far west UKRAINE has seen good rains but central & eastern Ukraine & SOUTHERN District Much Below Normal rain**

# 14-day Precipitation Analysis

Percent of normal through 12 UTC 6 May 2017



20 40 60 80 90 100 110 125 150 200 300 400 600

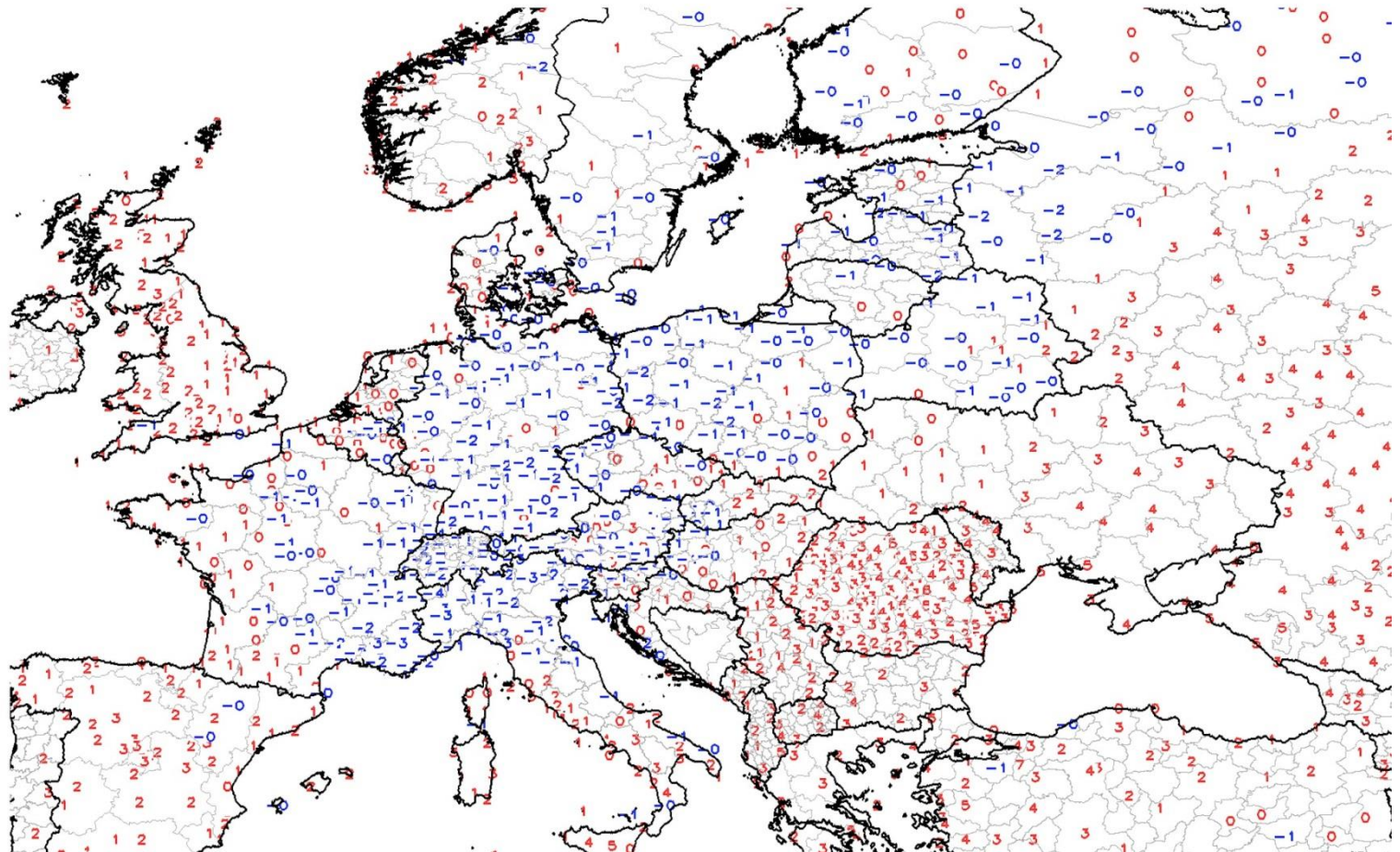
**NOTE the “band” of 0.5-2.0”/ 12-50mm over western Volga**



# TEMPS LAST 7 DAYS - Above Normal eastern Ukraine sw Russia while most of Europe has seen cooler than Normal temps

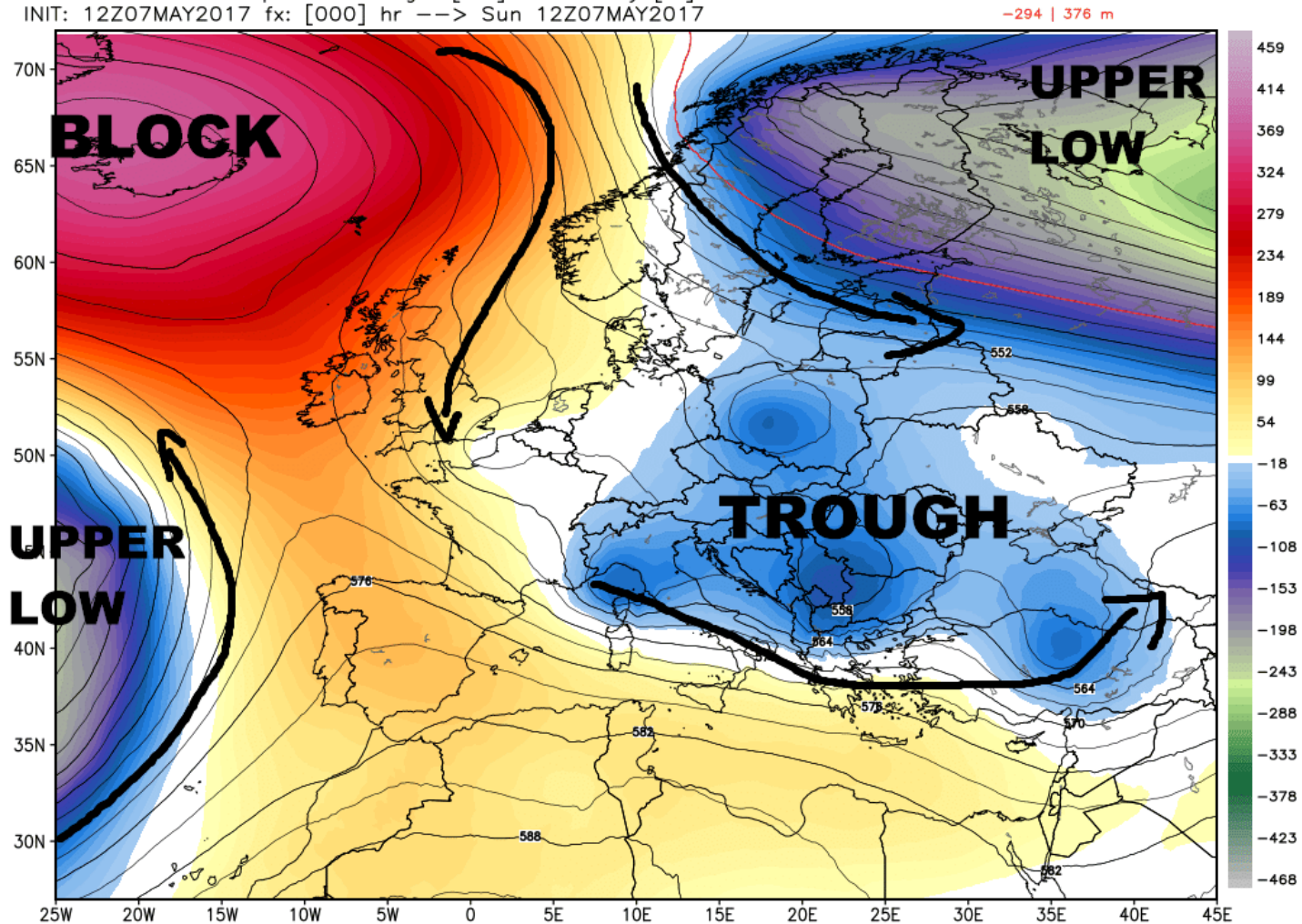
GTS Station Running 7-Day Average Temperature Anomaly (C)

Period: 30Apr2017 - 06May2017



# UPPER AIR MAP – MONSTR BLOCK OVER ICELAND = DEEP WIDE TROUGH OVER EASTERN EUROPE UKRAINE VOLGA = Wet & cold

ECMWF 500 hPa Geopotential Height [dm] & Anomaly [m]  
INIT: 12Z07MAY2017 fx: [000] hr --> Sun 12Z07MAY2017

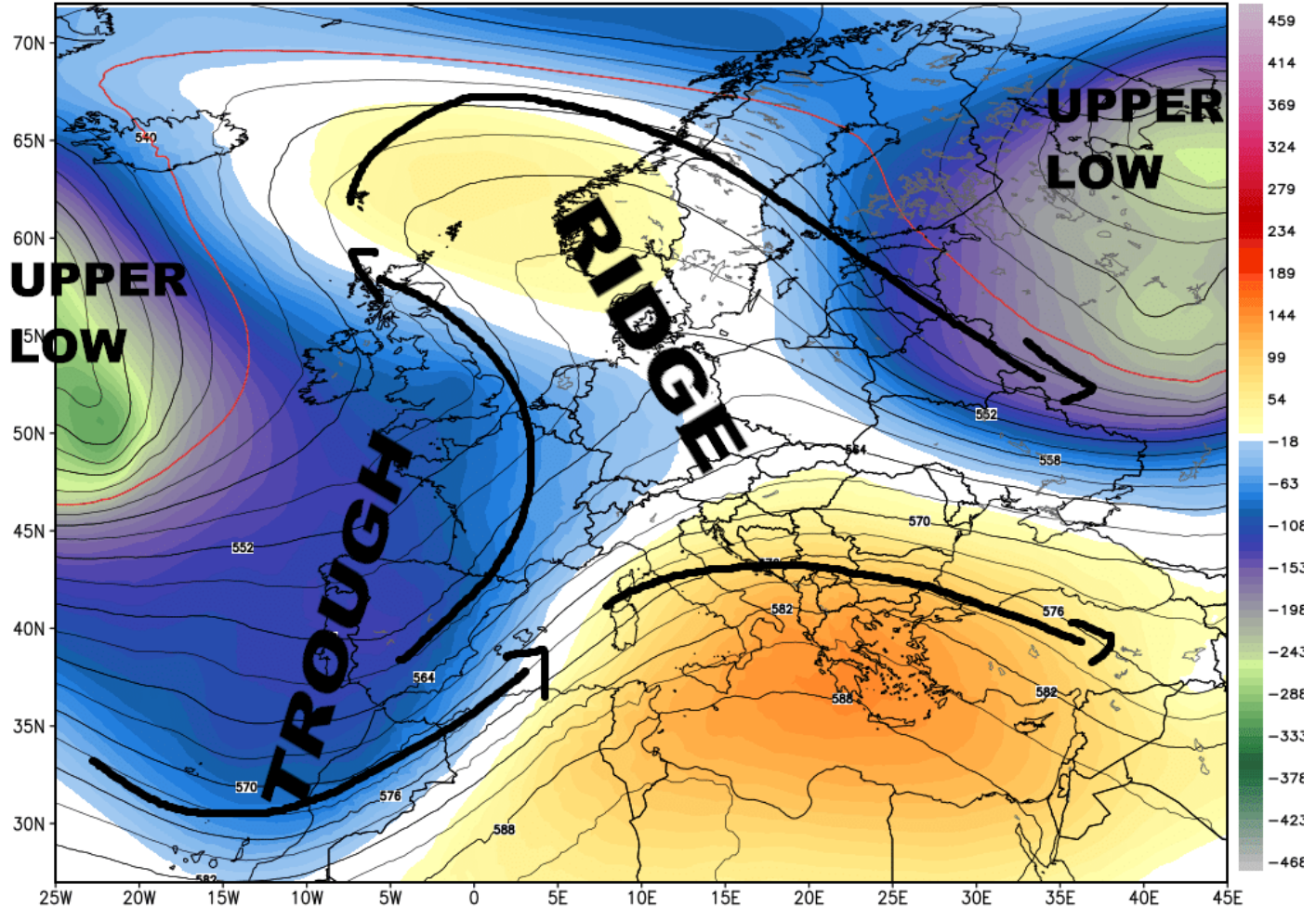




**by day 5 JET STREAM - major trough moves into Spain France UK.= wet. Cool TEMPS ANOMALIES - some rain over far sw AUS along with cool temps- warmer over all of se third of AUS**

ECMWF 500 hPa Geopotential Height [dm] & Anomaly [m]  
INIT: 12Z07MAY2017 fx: [120] hr --> Fri 12Z12MAY2017

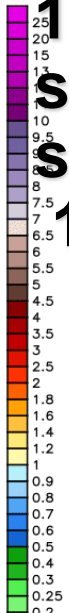
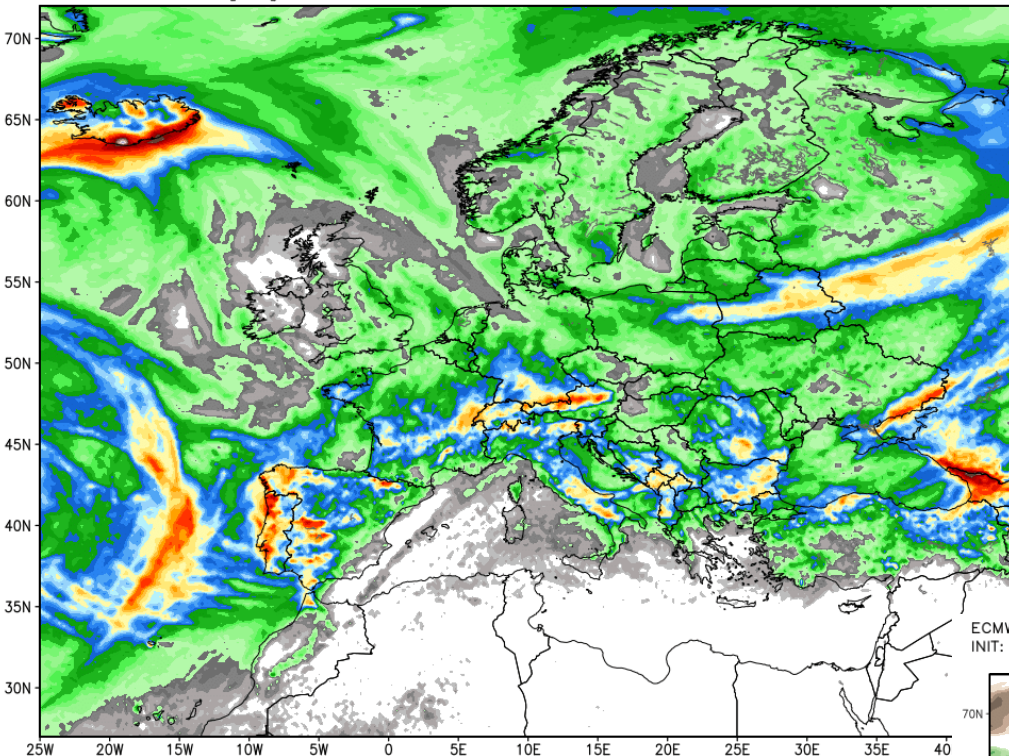
-315 | 150 m



ECMWF Total Precipitation [inches] between 12Z07MAY2017 -- 12Z12MAY2017  
INIT: 12Z07MAY2017 fx: [120] hr --> Fri 12Z12MAY2017

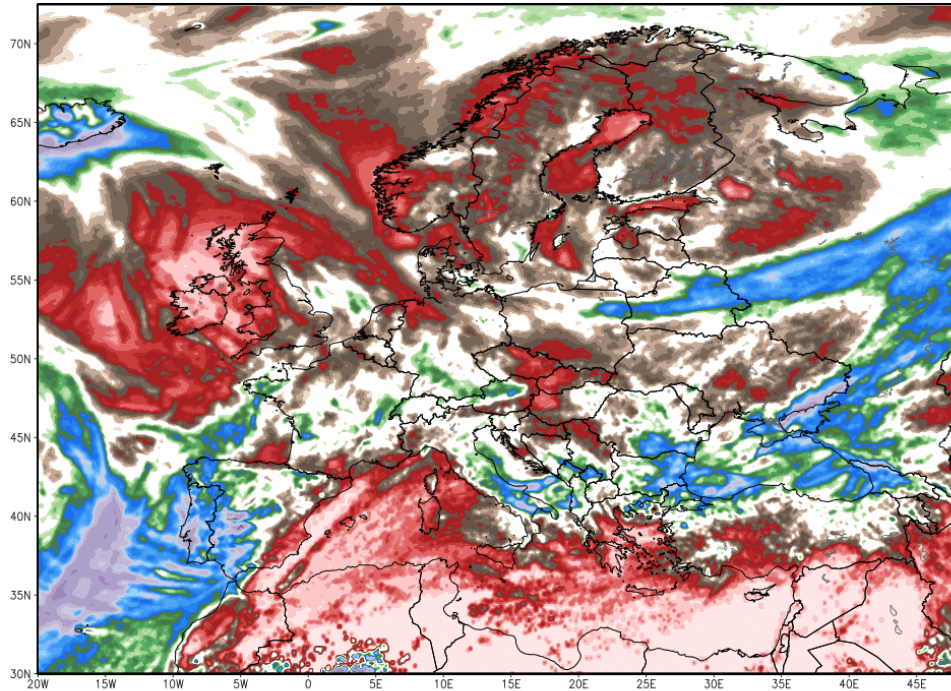
Max 8.0 in

**1-5D Moderate Rains  
southern eastern FR into  
sw Germany ... 0.5-1.2"/  
12=35mm**



ECMWF 120-hr Precip Anomaly [% of normal] between 12Z07MAY2017 -- 12Z12MAY2017  
INIT: 12Z07MAY2017 fx: [120] hr --> Fri 12Z12MAY2017

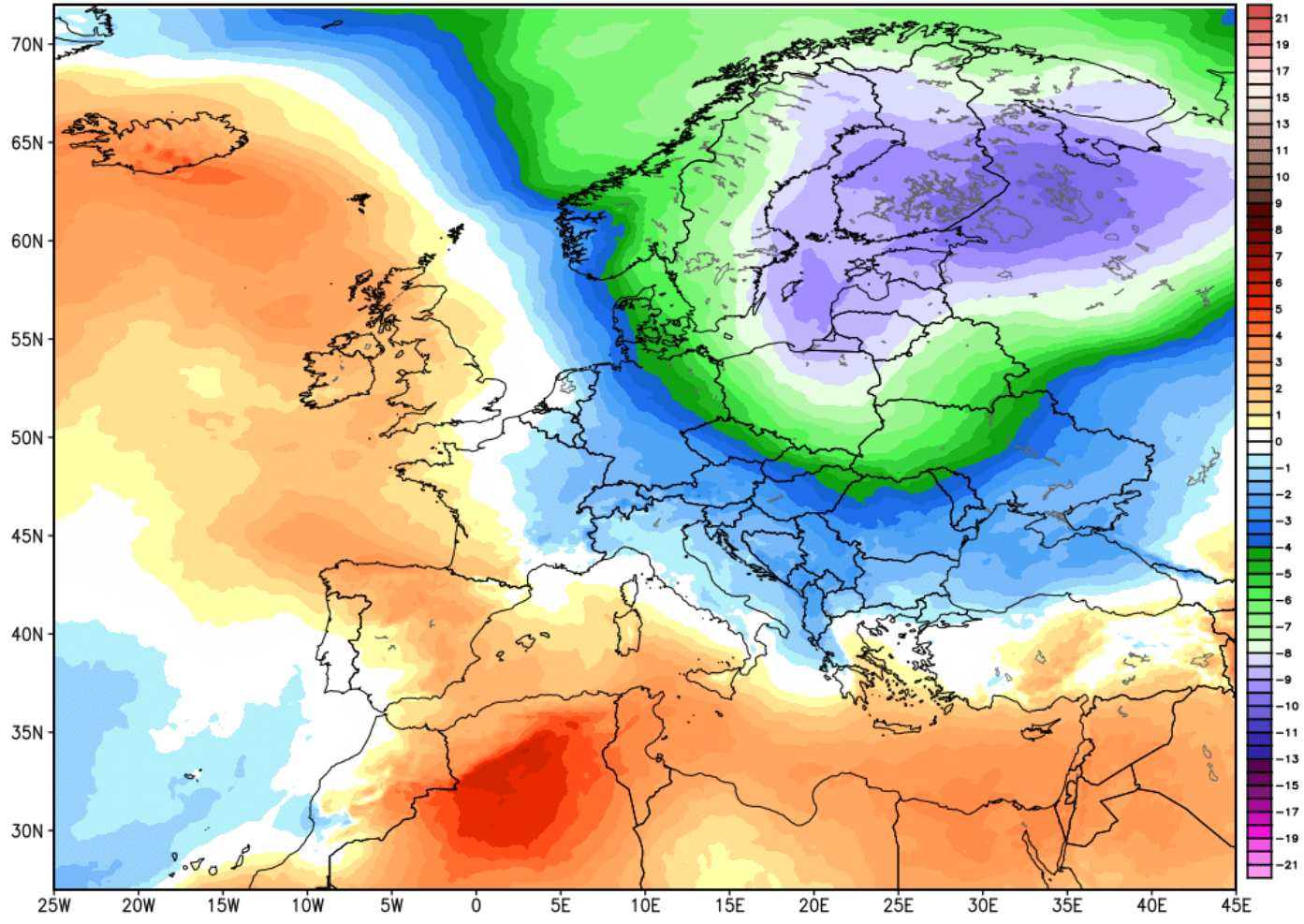
**POL & UKRAINE DRY  
GOOD rains over Volga  
& Southern District**



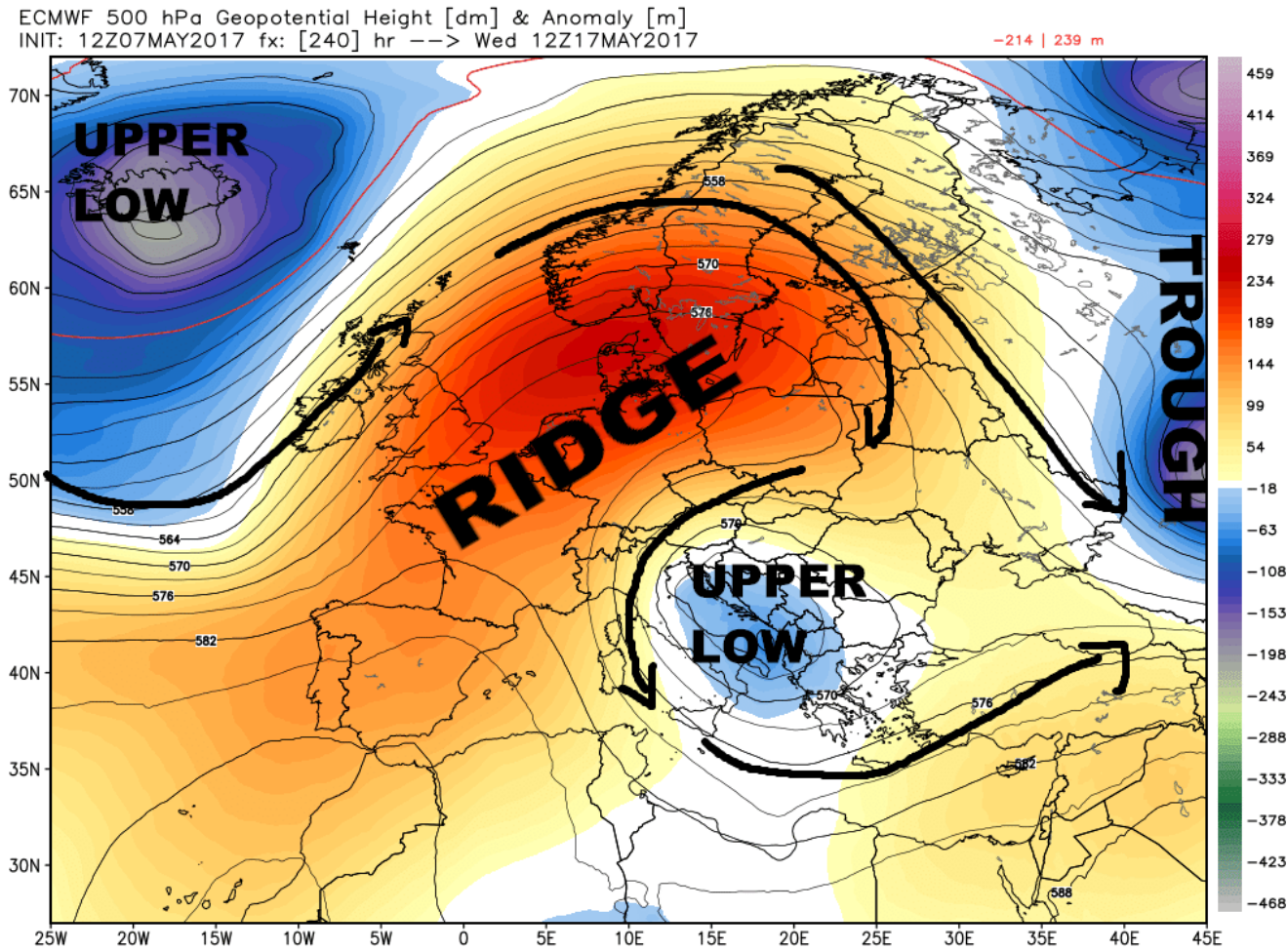


# TEMPS NEXT 5 DAYS -- VERY COLD OVER EASTERN EUROPE NW RUSSIA

ECMWF 850 hPa Temperature Anomaly [°C] fx: [120] hr --> Fri 12Z12MAY2017 -10.2° | 6.2°C  
INIT: 12Z07MAY2017 5-day Mean between 12Z07MAY2017 & 12Z12MAY2017 Day 0 - Day 5

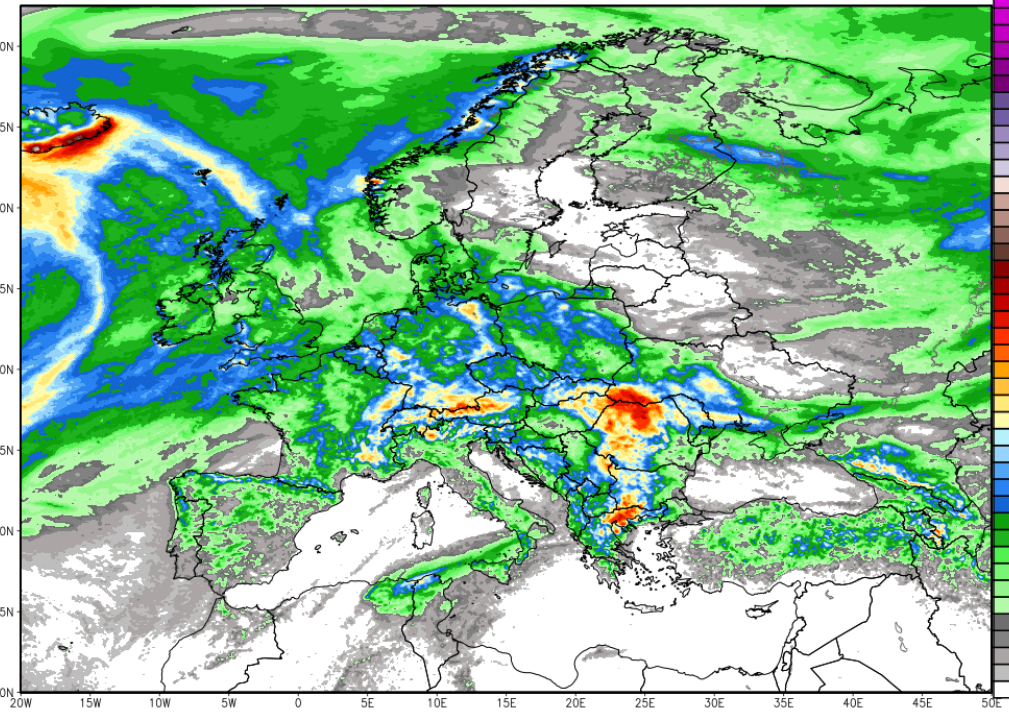


**6-10D JET STREAM massive ridge over western central EUROPE = WARM DRY... Big Upper Low over Balkans= rain .. Eastern Ukraine Volga = COLD DRY**

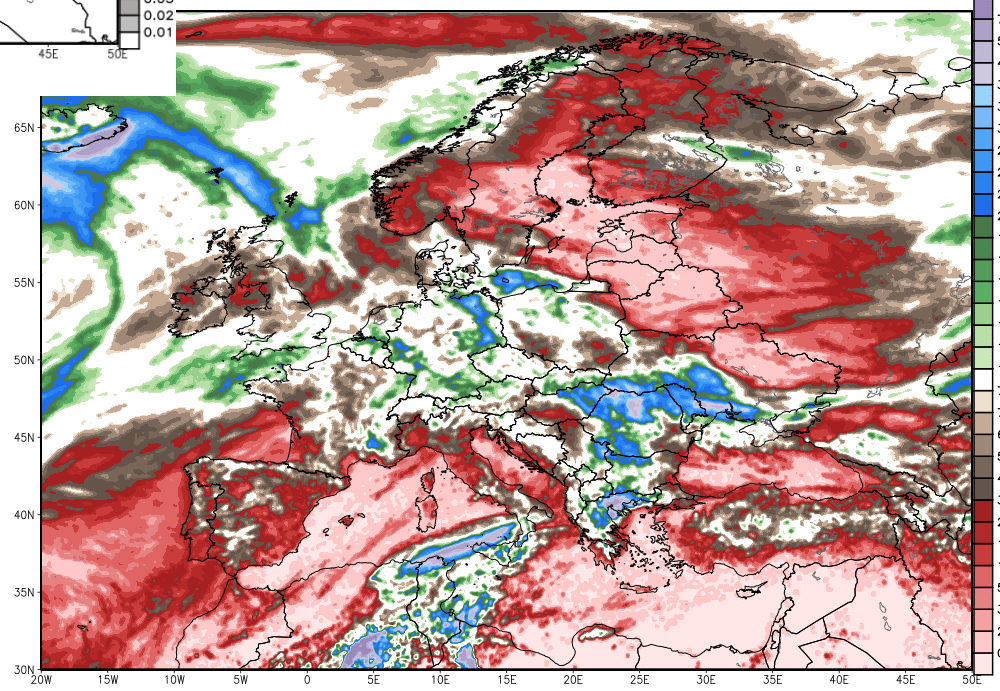


ECMWF 120-hourly Precipitation [inch] INIT: 12Z07MAY2017 fx: [240] hr --> Wed 12Z17MAY2017  
Total Precipitation [inches] between 12Z12MAY2017 -- 12Z17MAY2017

# 6-10D RAINFALL & TEMPS ANOMALIES -



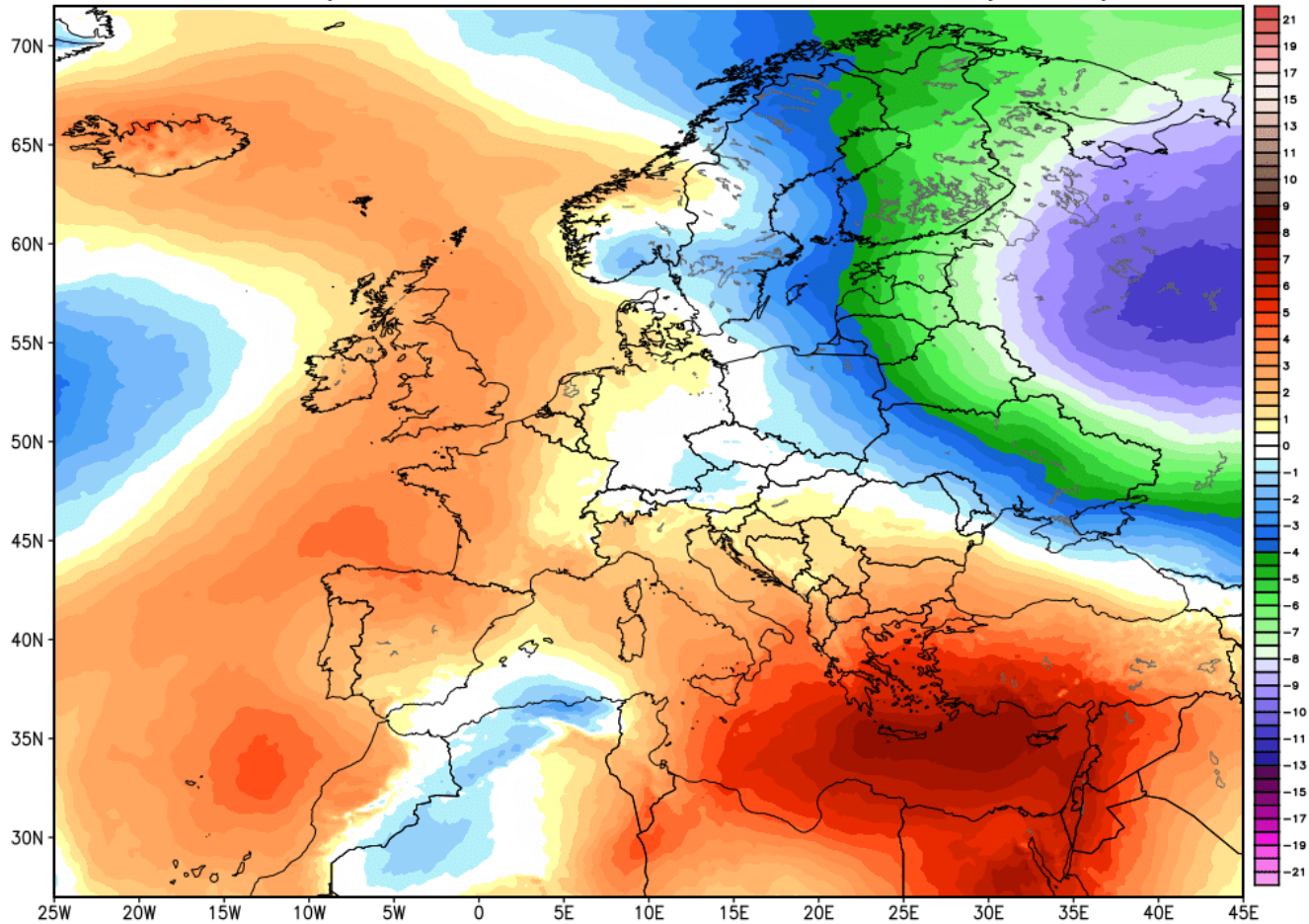
0.1 scip Anomaly [% of normal] between 12Z12MAY2017 -- 12Z17MAY2017  
0.08 7 fx: [240] hr --> Wed 12Z17MAY2017





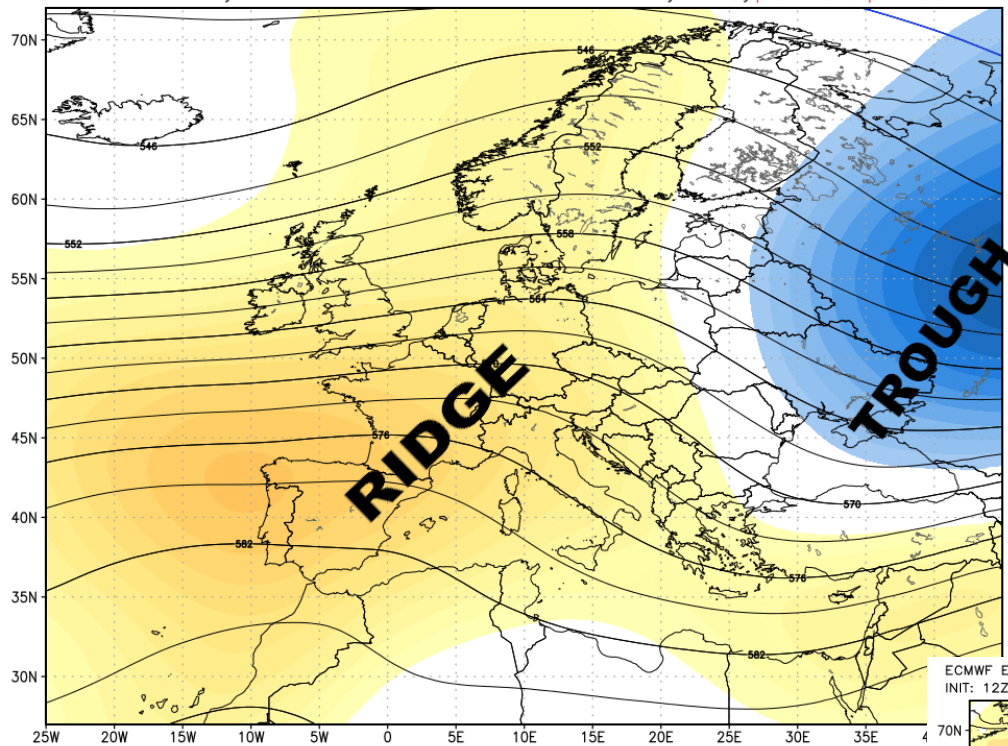
# 6-10D TEMPS ANOMALIES - WARM DRY FR SP ENG cold over eastern Ukraine all of Volga & Southern District

ECMWF 850 hPa Temperature Anomaly [°C] fx: [240] hr --> Wed 12Z17MAY2017 -10.9° | 7.7°C  
INIT: 12Z07MAY2017 5-day Mean between 12Z12MAY2017 & 12Z17MAY2017 Day 5 - Day 10



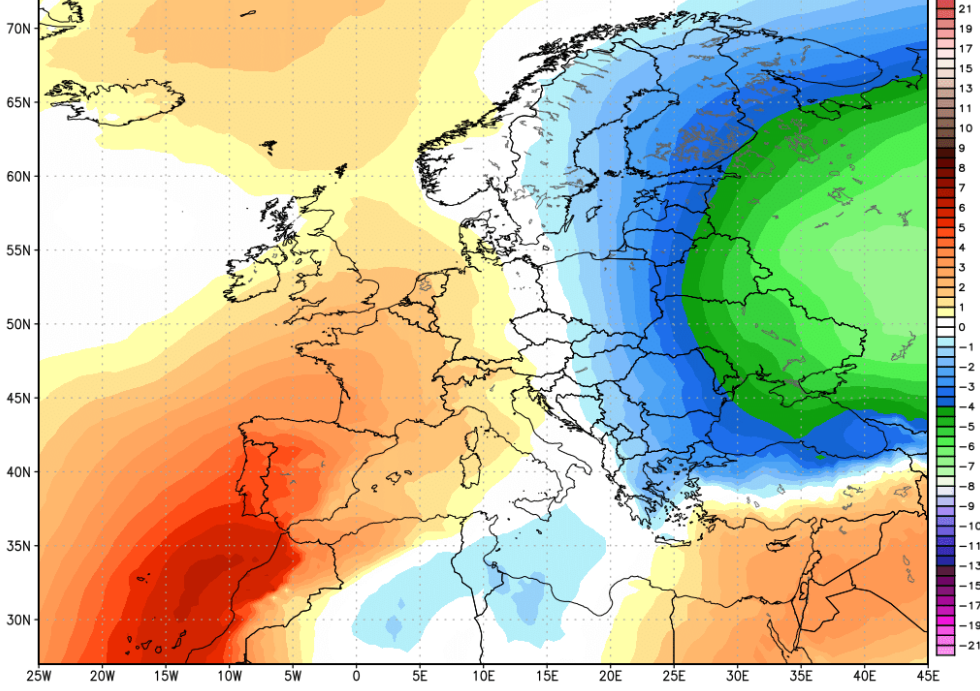


ECMWF EPS Ensemble Mean 500 hPa Geopotential Height [dm] & Anomaly [m] fx: [312] hr --> Sat 12Z20MAY2017  
INIT: 12Z07MAY2017 5-day Mean between 12Z15MAY2017 & 12Z20MAY2017 Day 8 - Day 13 MinMax: -97.9 | 101.0 m



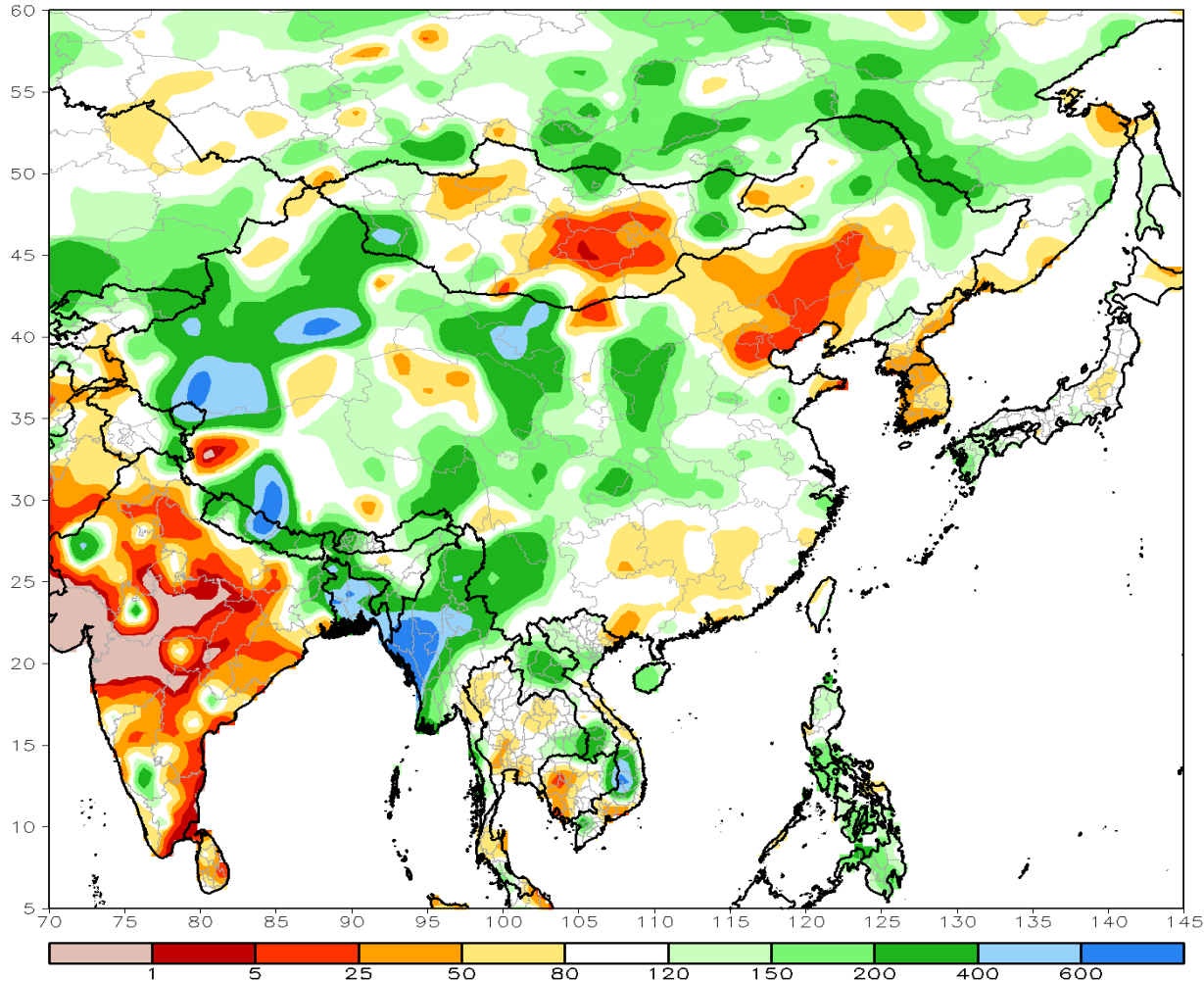
**11-15D = RIDGE over western Europe - Trough hangs toug over Ukraine western Russia = cool dry**

ECMWF EPS Ensemble Mean 850 hPa Temperature Anomaly [°C] fx: [312] hr --> Sat 12Z20MAY2017  
INIT: 12Z07MAY2017 5-day Mean between 12Z15MAY2017 & 12Z20MAY2017 Day 8 - Day 13 MinMax -6.7° | 6.2°C



# CHINA RAINFALL ANOMALIES – DRY over Northern half of NCP western half of Manchuria

CPC Unified Gauge 30-Day Percent of Normal Rainfall (%)  
Period: 07Apr2017 – 06May2017

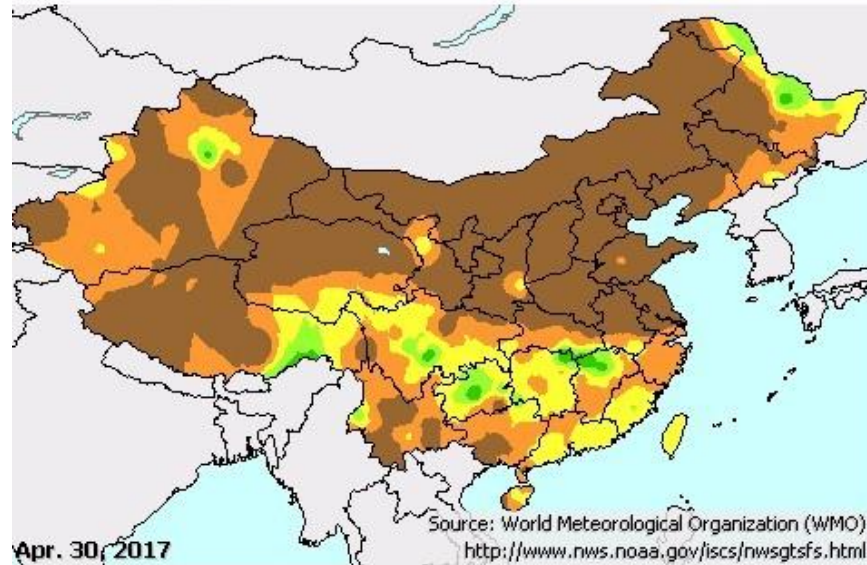


# surface & sub surface soil moisture below and much normal

Surface Soil Moisture (WMO)

 View in Google Earth

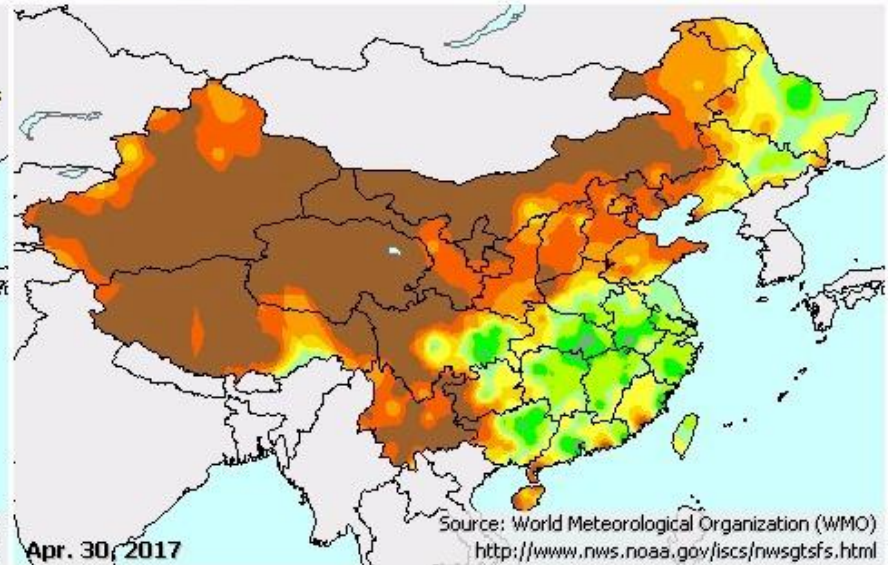
04/21/2017 - 04/30/2017



Subsurface Soil Moisture (WMO)

 View in Google Earth

04/21/2017 - 04/30/2017



Surface Soil Moisture (mm)



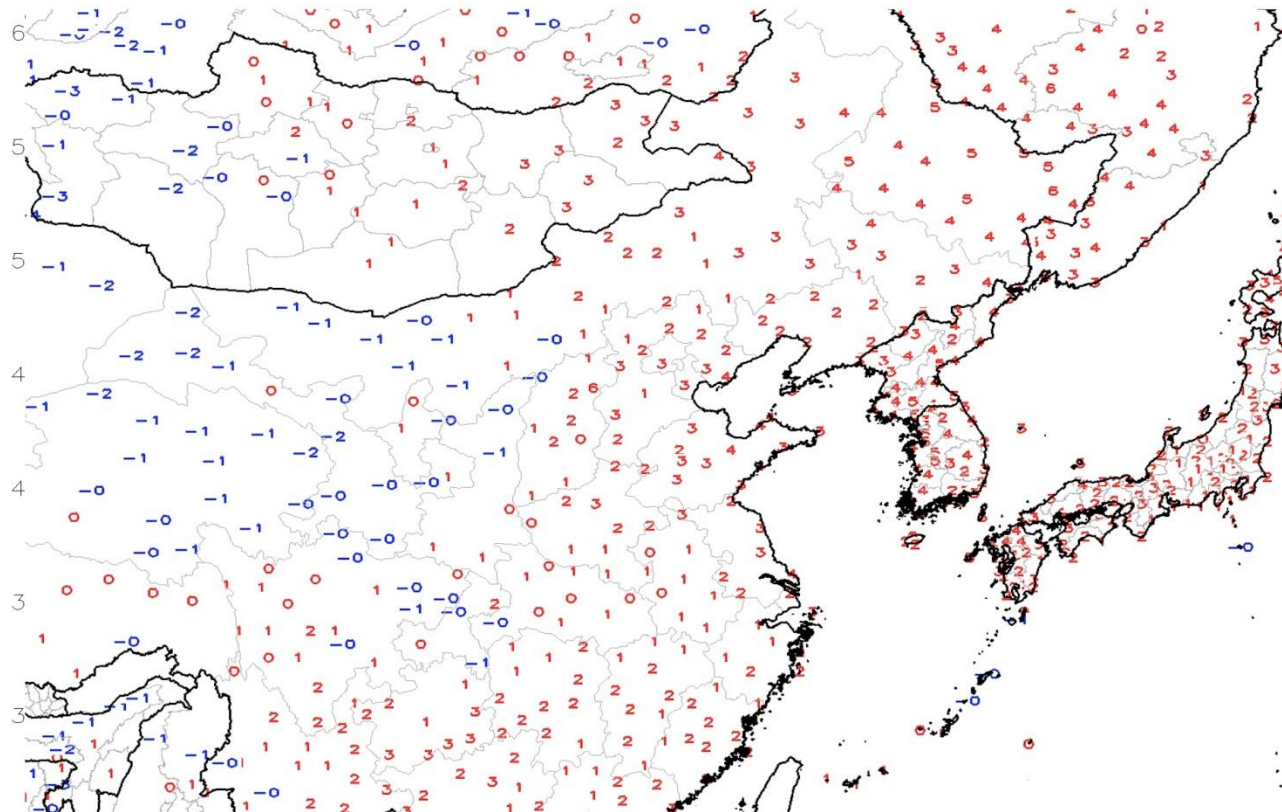
Sub-Surface Soil Moisture (mm)





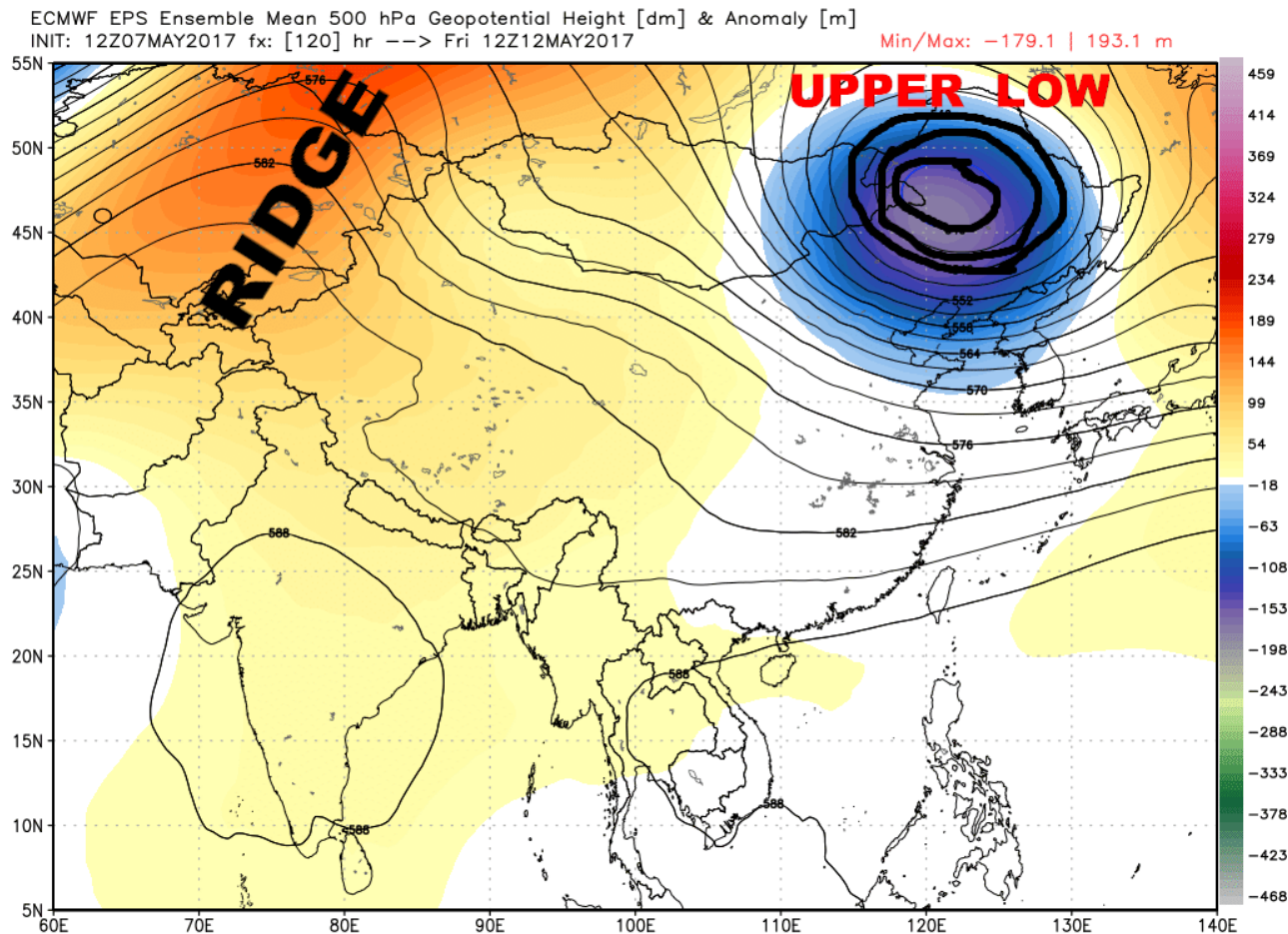
# TEMPS ANOMALIES last 7 days Above & Much Above Manchuria and NCP

GTS Station Running 7-Day Average Temperature Anomaly (C)  
Period: 30Apr2017 - 06May2017

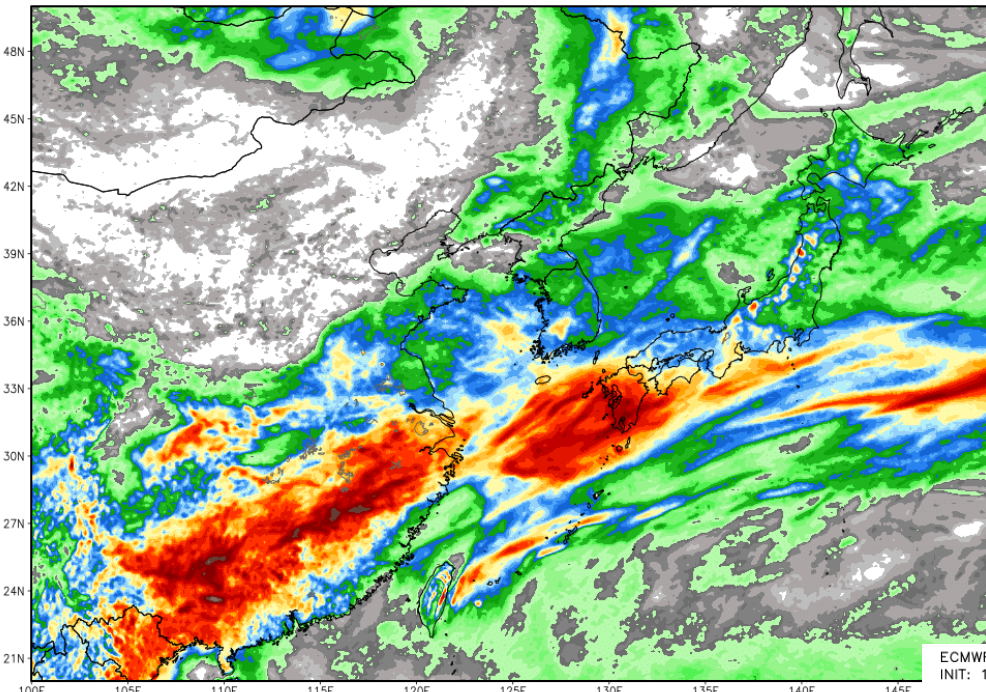




# 500mb JET STREAM MAP - Large Upper Low over north Manchuria -- cool dry over NCP Manchuria

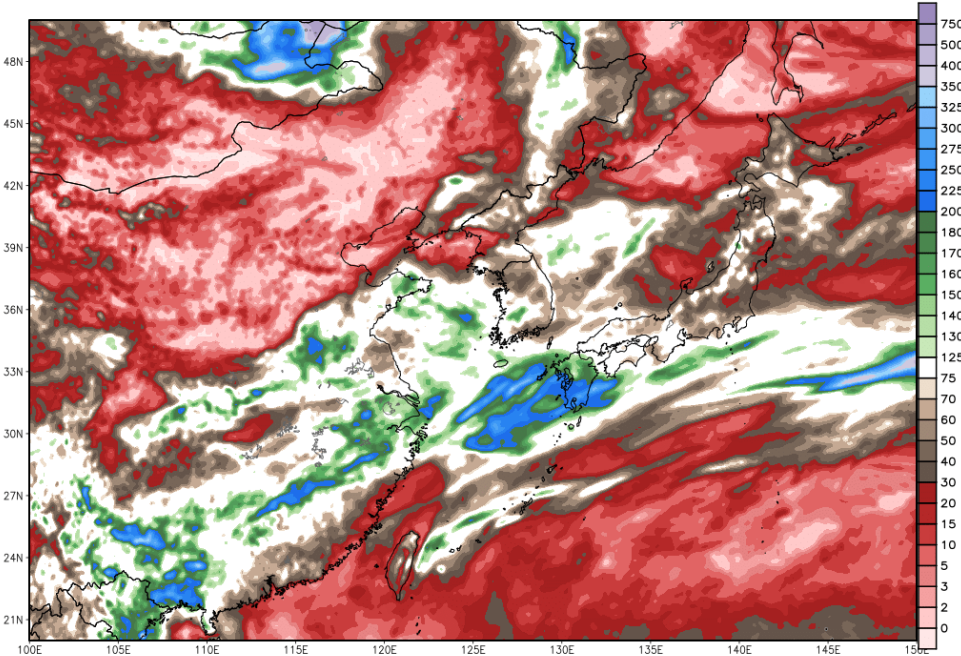


ECMWF 120-hourly Precipitation [inch] INIT: 12Z07MAY2017 fx: [120] hr --> Fri 12Z12MAY2017  
Total Precipitation [inches] between 12Z07MAY2017 -- 12Z12MAY2017



**1-5 RAINFALL & TEMPS  
ANOMALIES - dry dry  
dry over Manchuria &  
most of NCP**

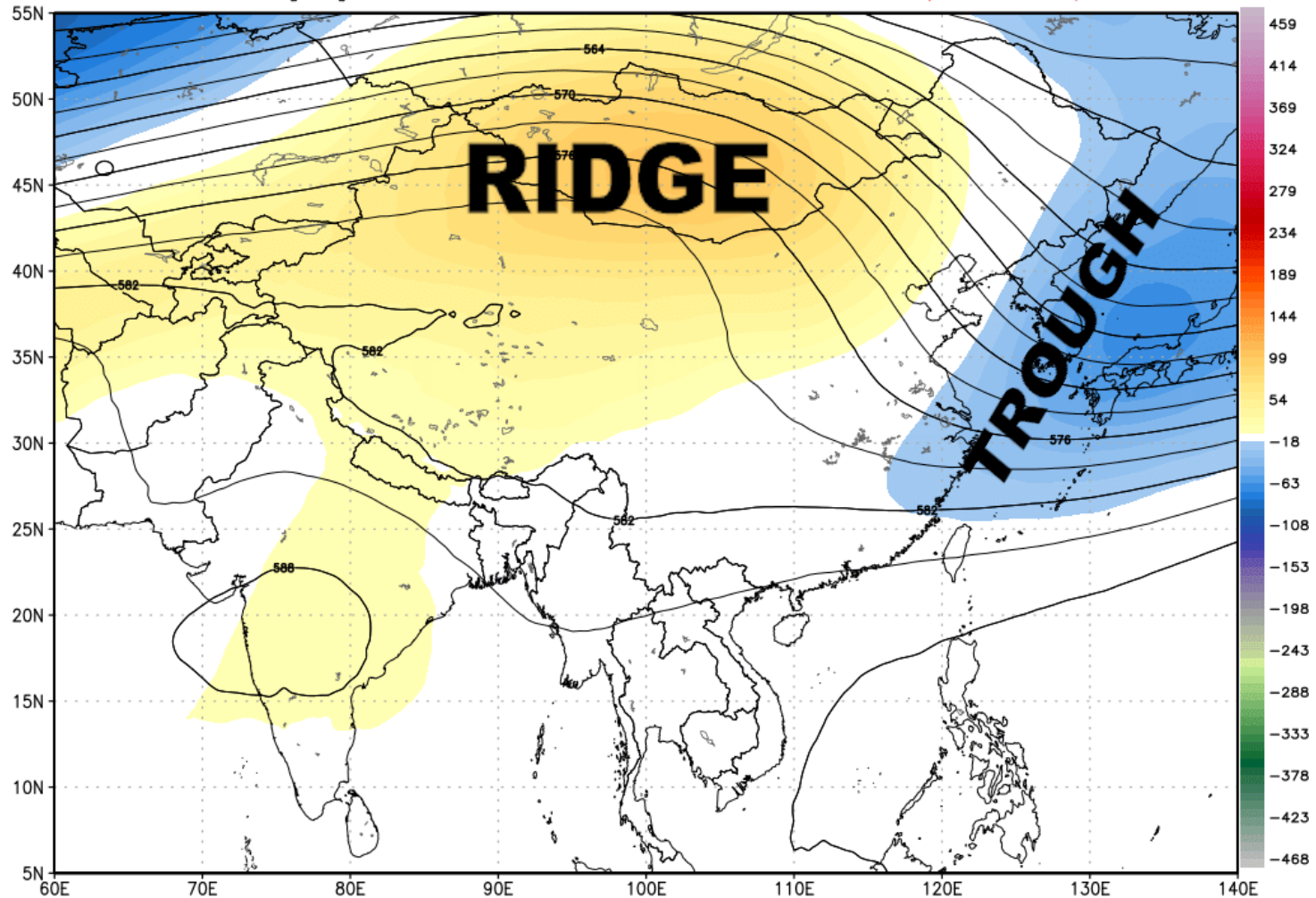
ECMWF 120-hr Precip Anomaly [% of normal] between 12Z07MAY2017 -- 12Z12MAY2017  
INIT: 12Z07MAY2017 fx: [120] hr --> Fri 12Z12MAY2017



# 6-10D JET STREAM = Trough over Japan leaves and Ridge build into Mongolia

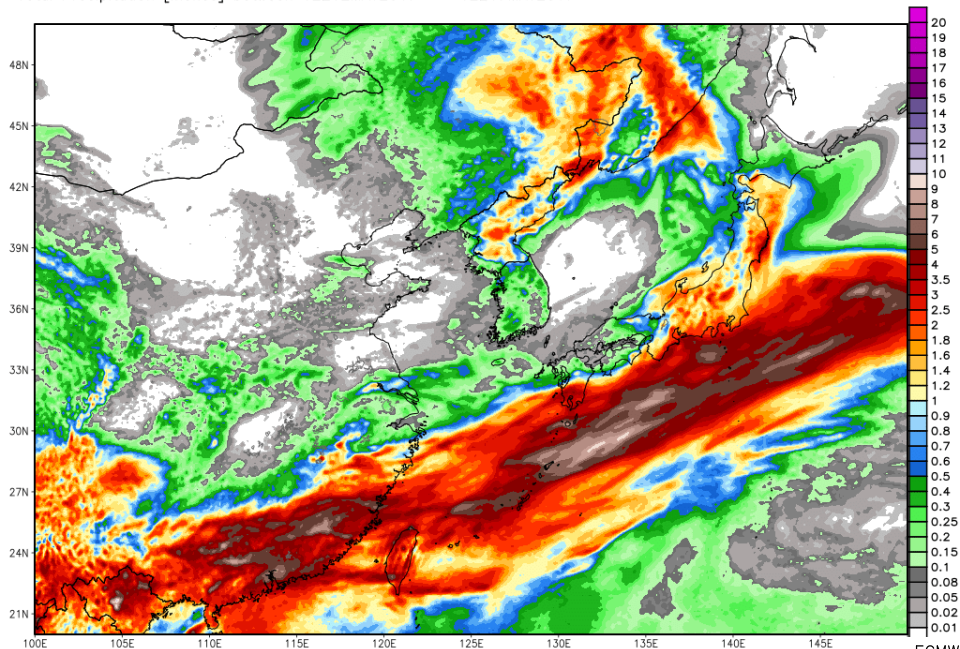
ECMWF EPS Ensemble Mean 500 hPa Geopotential Height [dm] & Anomaly [m]  
INIT: 12Z07MAY2017 fx: [240] hr --> Wed 12Z17MAY2017

Min/Max: -92.6 | 101.7 m



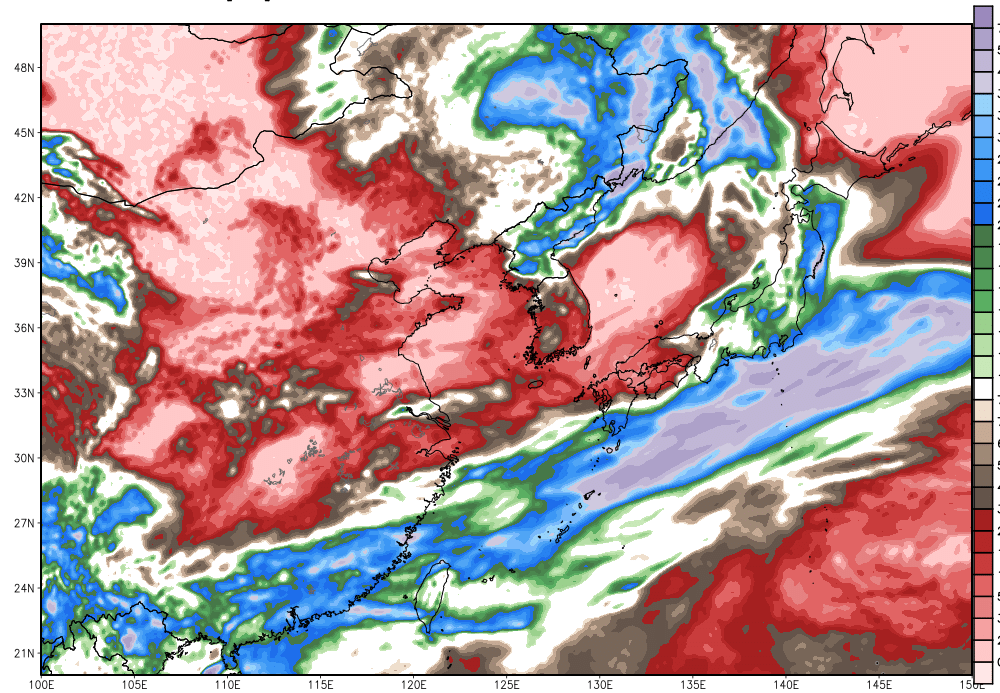


ECMWF 120-hourly Precipitation [inch] INIT: 12Z07MAY2017 fx: [240] hr --> Wed 12Z17MAY2017  
Total Precipitation [inches] between 12Z12MAY2017 -- 12Z17MAY2017

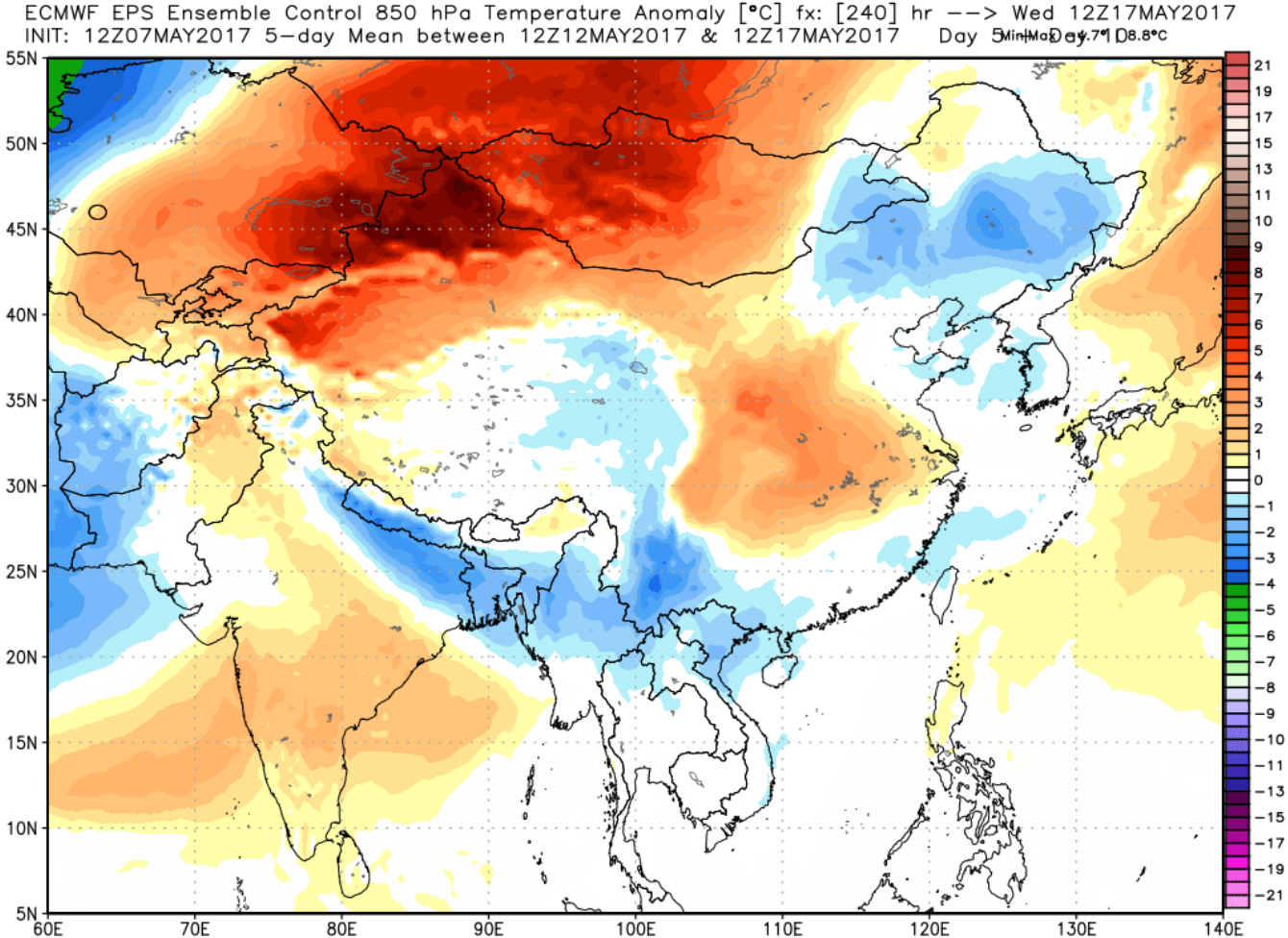


# 6-10D RAINFALL & ANOMALIES – DRY DRY DRY over NCP Manchuria

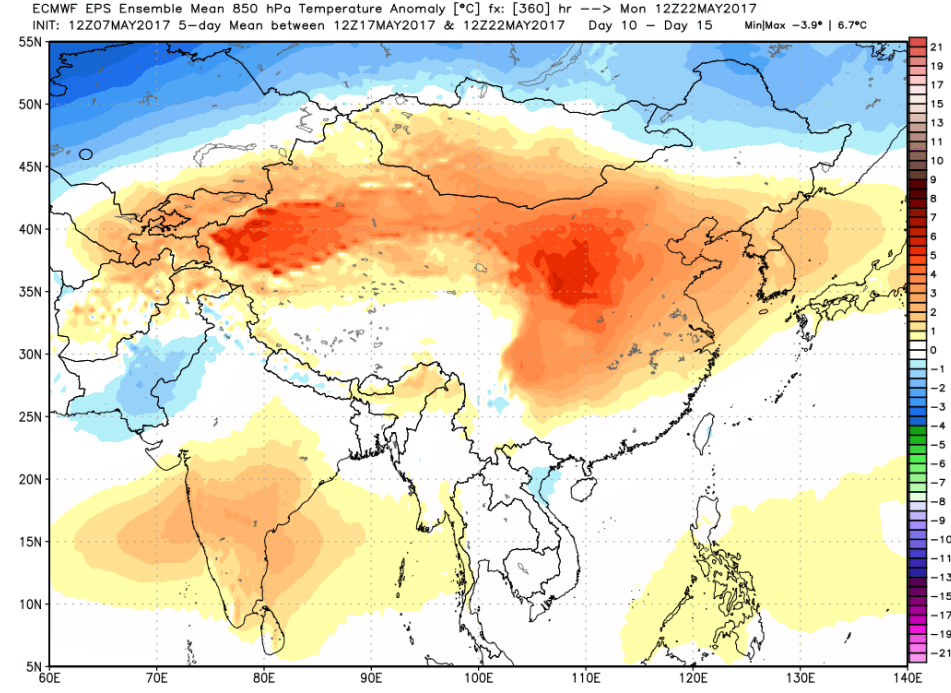
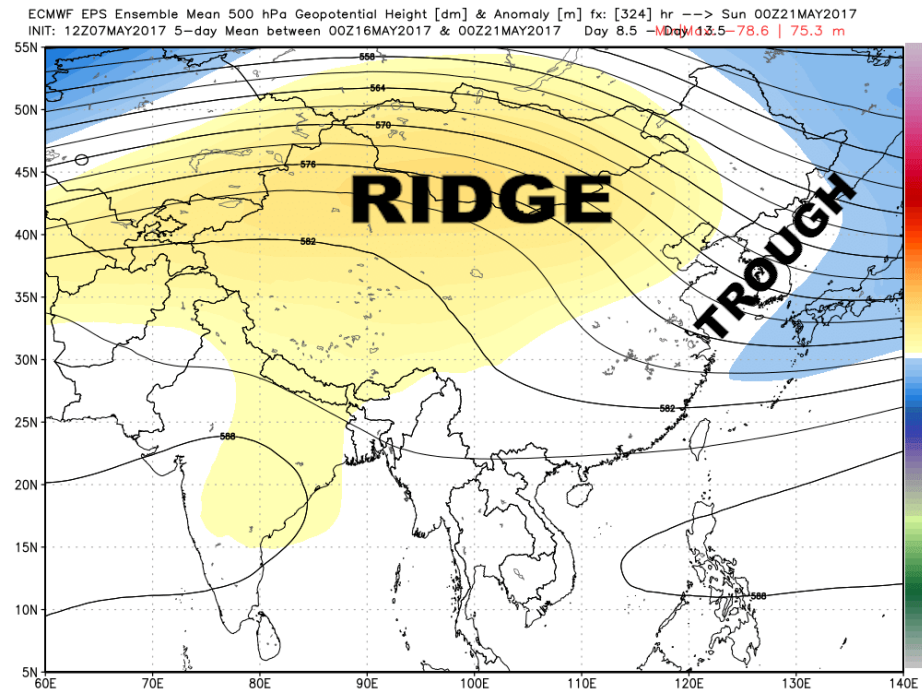
ECMWF 120-hr Precip Anomaly [% of normal] between 12Z12MAY2017 -- 12Z17MAY2017  
INIT: 12Z07MAY2017 fx: [240] hr --> Wed 12Z17MAY2017



# 6-10D TEMPS ANOMALIES - cool over Manchuria warmer over southern NCP as the Ridge builds in



when the TROUGH leaves Japan MASSIVE RIDGE over Mongolia builds east=  
possible HEAT WAVE / DRY conditions for NCP Manchuria... WxRisk talked about this  
in back in late FEB North China had WARM DRY Winter





**Sometimes I wonder whether the world is being run by smart people who are putting us on, or by imbeciles who really mean it.**

**MARK TWAIN**

