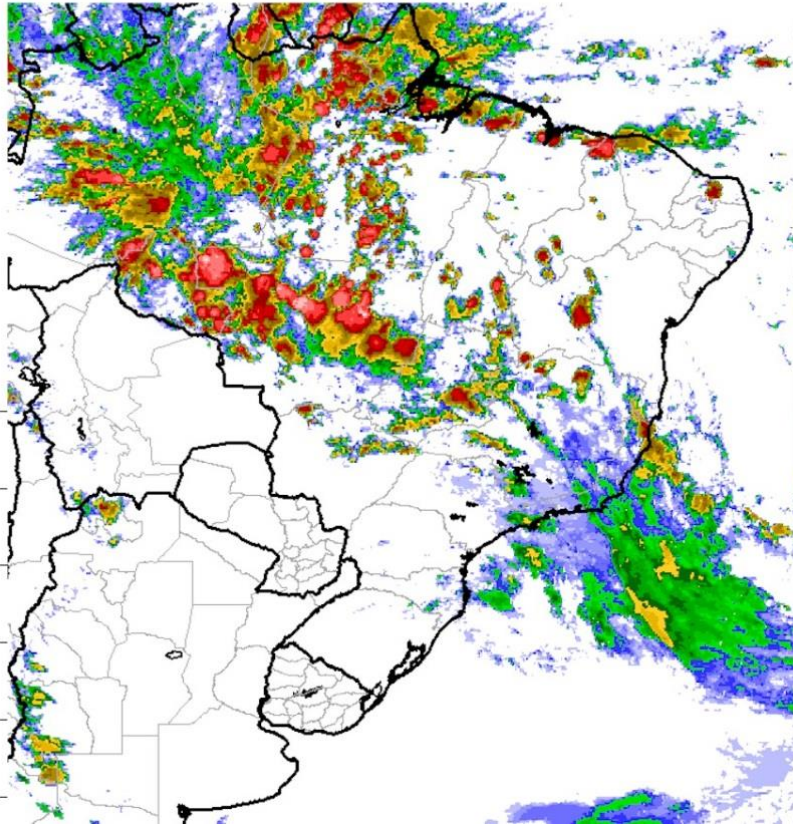


# SOUTH AMERICA GRAIN WEATHER 3/19/17

Infra-Red Temperatures (K)

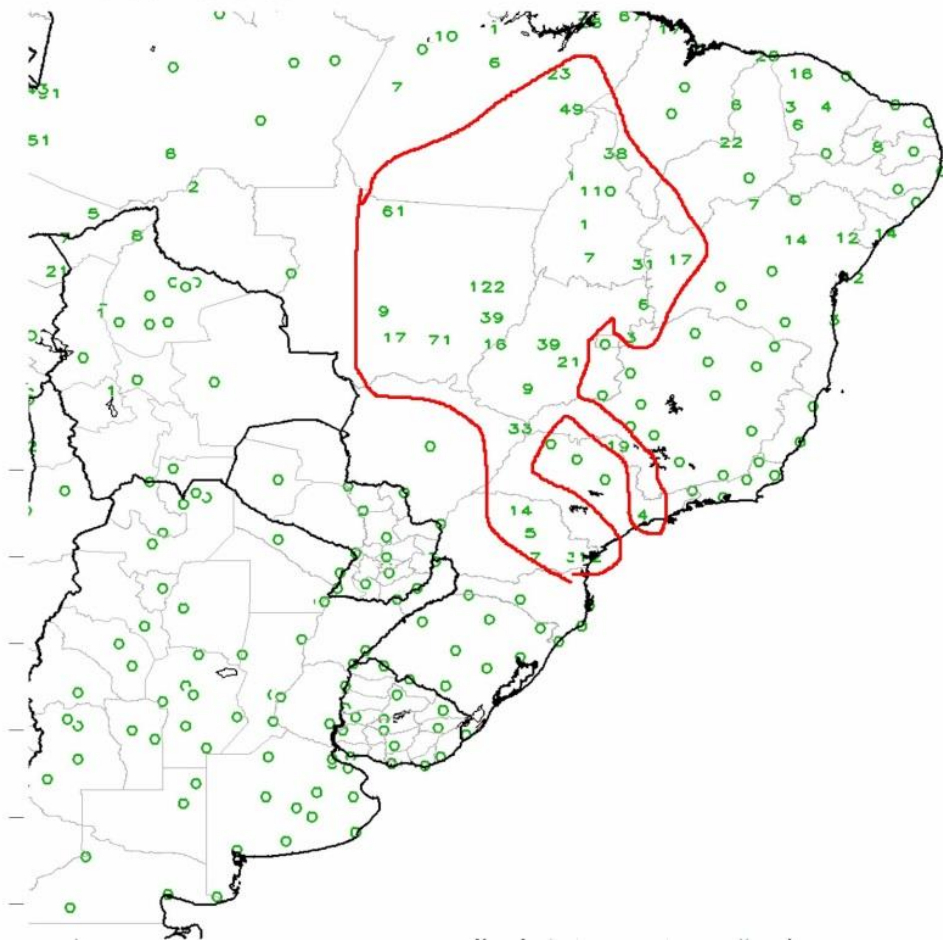
Period: 21Z 19Mar2017



**SUNDAY NIGHT** Infra red satellite pics shows numerous showers and storms across much of central & northern Mato Grosso with 60% coverage. There are some storms over southern Goias and western Minas Gerais but the coverage is only 40%. Southwest and Southeast SW Brazil as well as all of Argentina is clear

# GTS Station 24-hr Reported Precipitation (mm)

Period: 18Mar2017

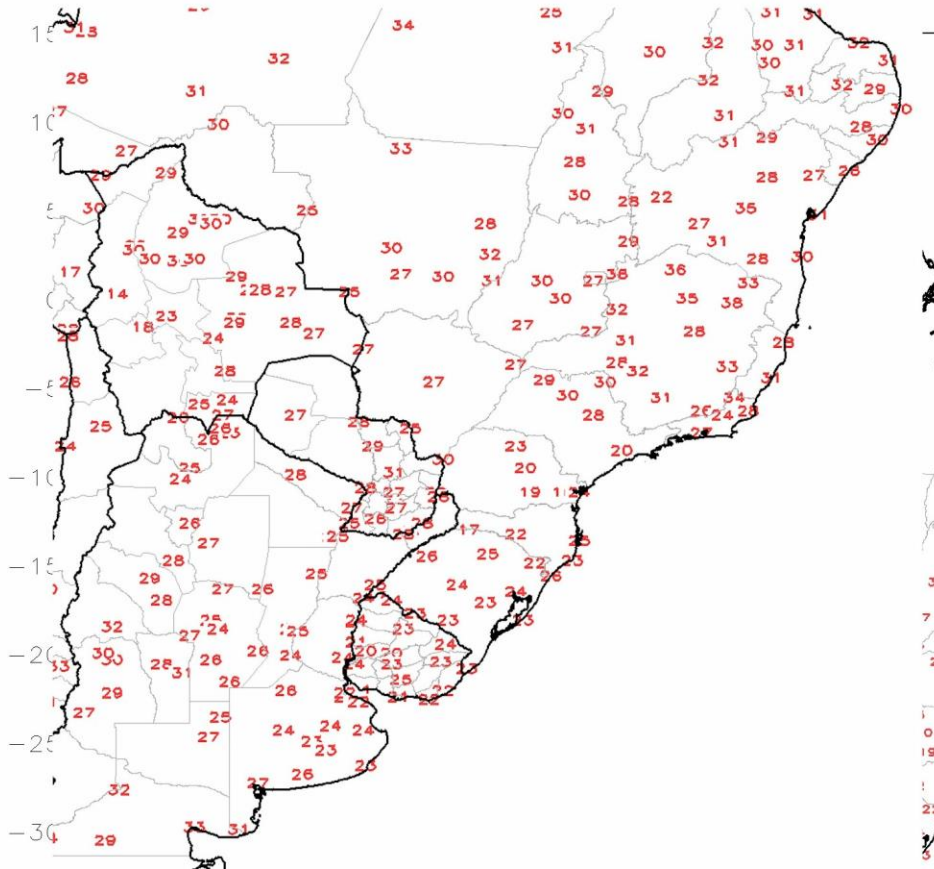


**24 RAINFALL FOR ALL OF MARCH 18-** - all of Argentina was clear and rain free as was all of Paraguay and southeast Brazil. There were numerous scattered storms / rain across 40% of Sao Paulo, 60% of Tocantins, 50% and Goiás, 60% Mato Grosso with amounts of 0.25-5.0" / 12-125mm with the heaviest rains over Mato Grosso.

**MAX TEMPS MARCH 18 ...** 24 to 28c/ 75-82f over all of Argentina into eastern Paraguay into Southeast Brazil.... 27-31c/ 82-88f over all of western central and eastern Brazil.

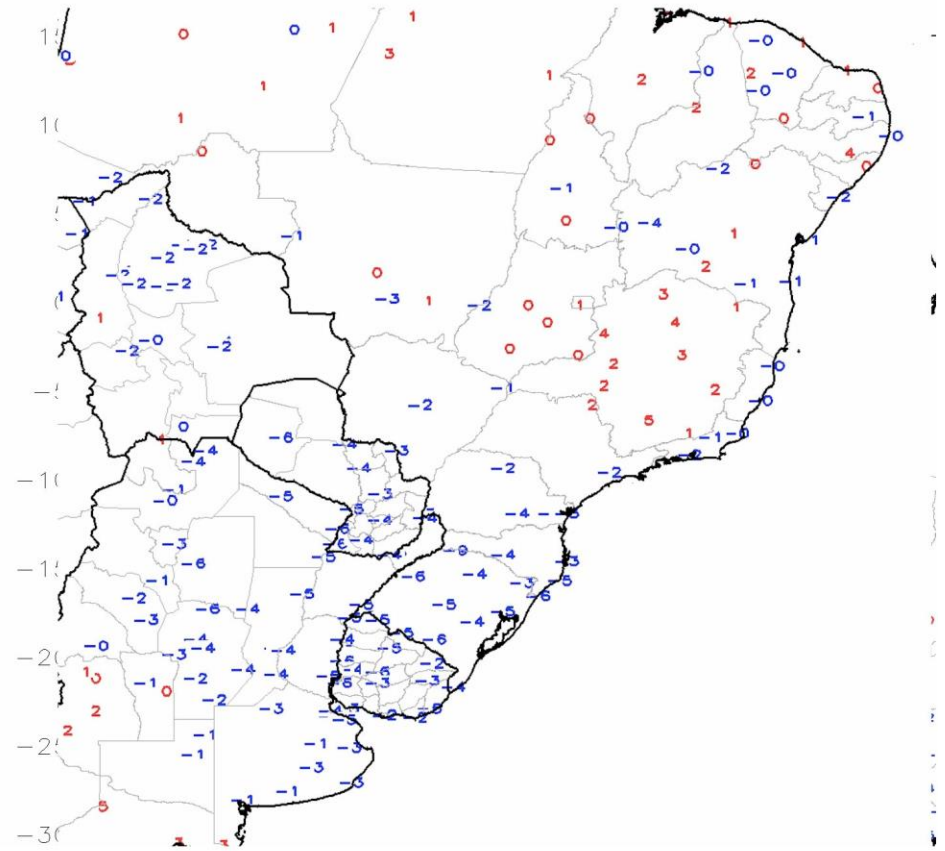
GTS Station 24-hr Maximum Temperature (C)

Period: 18Mar2017



GTS Station 24-hr Temperature Anomaly (C)

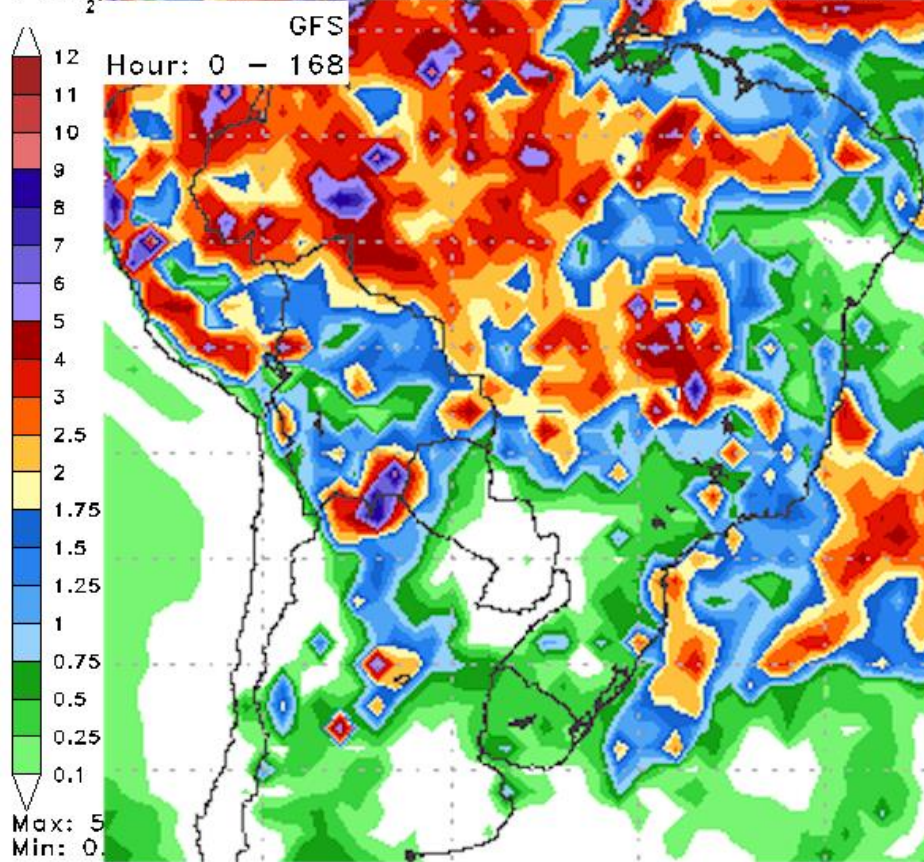
Period: 18Mar2017



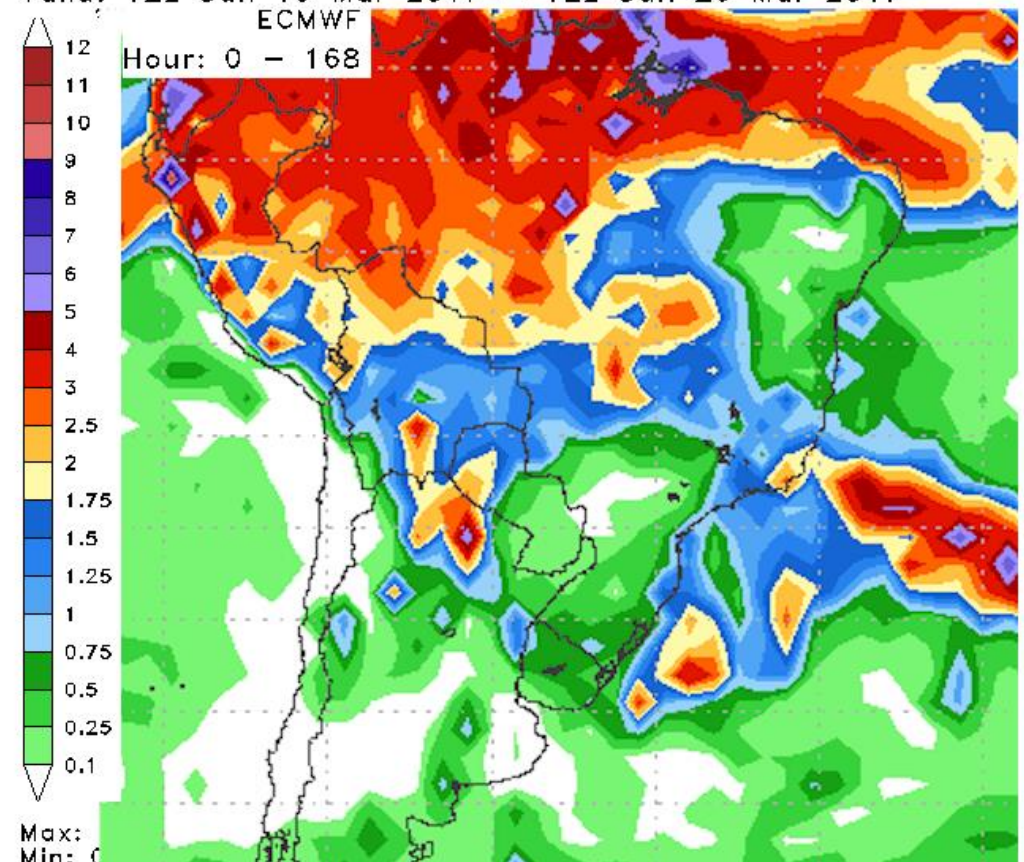
# NEXT 7 DAYS

Model data shows most of Argentina as well as Paraguay and southeast Brazil will be dry over the next 7 days over next 5 days. Most of the significant or heavy rain over the next week will fall over Mato Grosso Tocantins with amounts of 1-4"/ 25-100mm with 60-70% coverage... with the heaviest rains over Northern Goias and Tocantins. Eastern Brazil from Sao Paulo to Bahia is also mostly dry but Minas Gerais sees 0.25-1.5"/6-25mm with 50% coverage.

1-7 Day Total Precipitation (in)  
Valid: 12z Sun 19 Mar 2017 - 12z Sun 26 Mar 2017

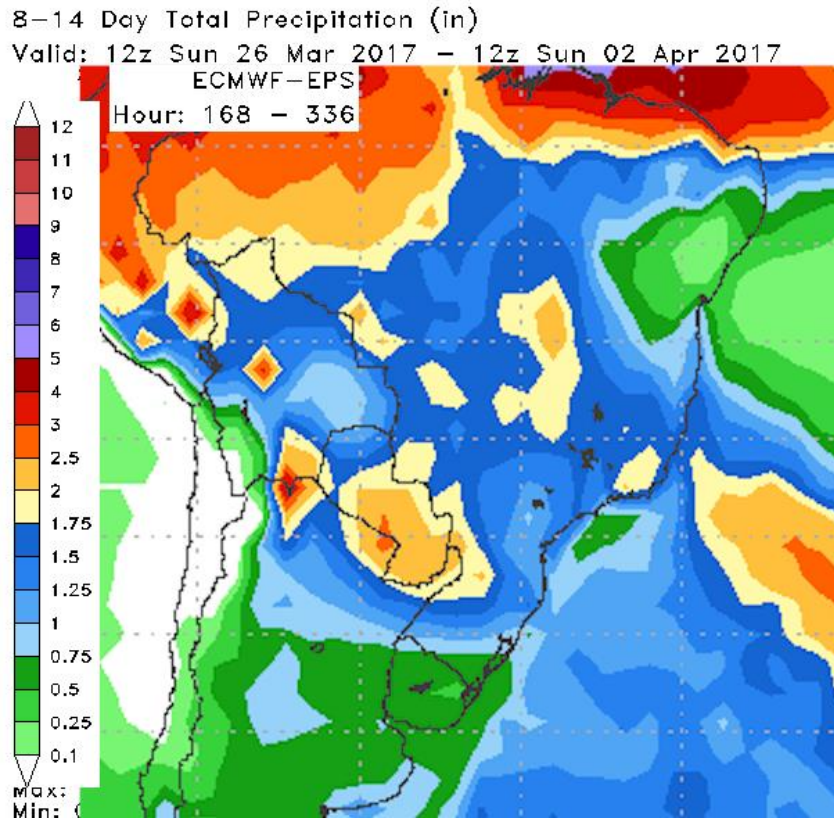
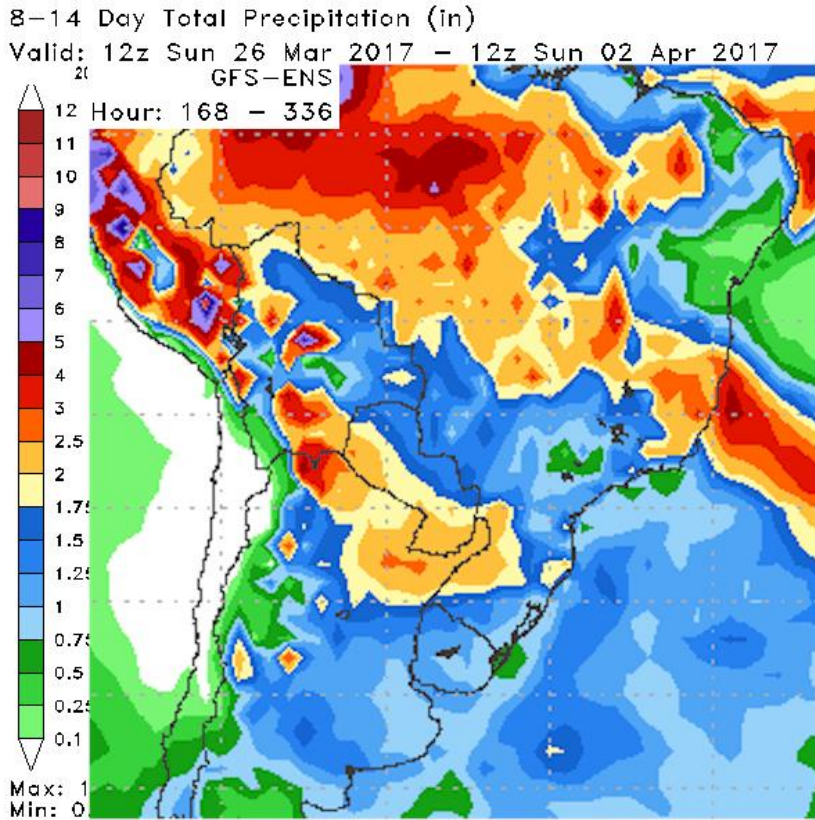


1-7 Day Total Precipitation (in)  
Valid: 12z Sun 19 Mar 2017 - 12z Sun 26 Mar 2017



# WEEK 2

The models here are not in very good team. First as you can see the GFS model is quite dry over most of northern Argentina where is the European model has a significant thunderstorm cluster that dropped anywhere from 2 to 8"/ 50-400mm of rain covering much of Chaco and Formosa and western Corrientes. There is also significant difference between the models as to how much rain is going to fall over central and East Central Brazil. The GFS model has significant rains over northern Sao Paulo southern Minas Gerais all of Goias... 1-4"/25-100mm. Th the European model is similar with respect to the area of central and East Central Brazil being covered by the rain but the coverage is not as high in the rainfall amounts are significantly under 2 inches/ 50mm..



\*\*\*\*\*

DT wxrisk.com OFFICE 804 715 8330 CELL 804 307 8070