



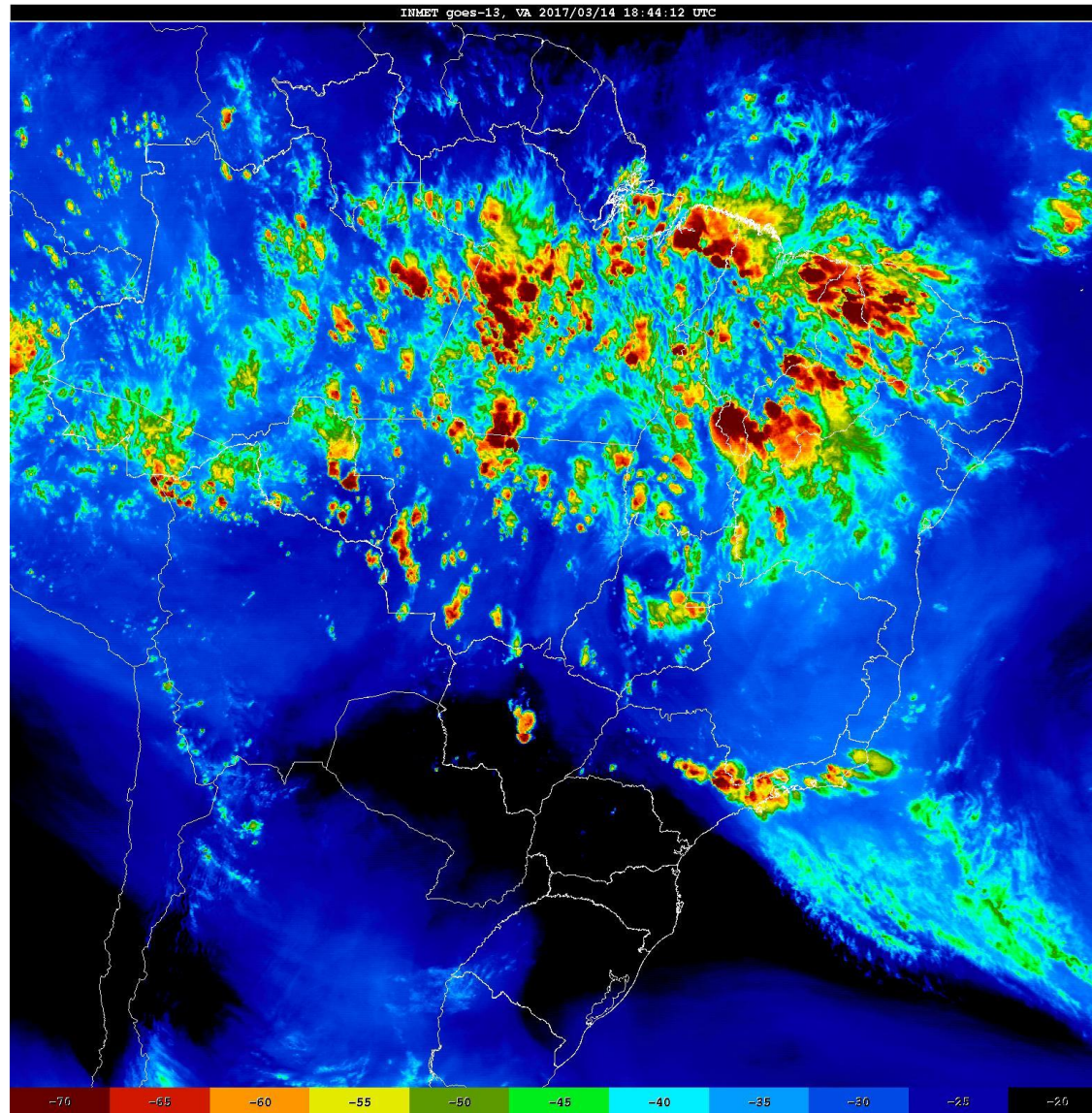
Weather Forecasting For
Traders, Investors, and Businesses

SOUTH AMERICA GRAIN WEATHER 3/14/17

OVERVIEW

Things look like they are quieting down to near normal conditions. Most of Argentina stays generally dry over the next 10 days but not completely so. Northern Argentina looks fairly wet models with some rain returning in the 11 to 15 day over central n Argentina. There will be significant rains over southeastern Brazil over the next five days as most of this rain does not reach into Sao Paulo. However in the 6-10 day and in the 11 to 15 day significant rains develop over much of central and east central Brazil and these rains cover most of Sao Paulo. In addition the Week3 and week4 CFS model is quite wet over much of MGDS and Sao Paulo... but the European weekly is not quite as wet over these areas

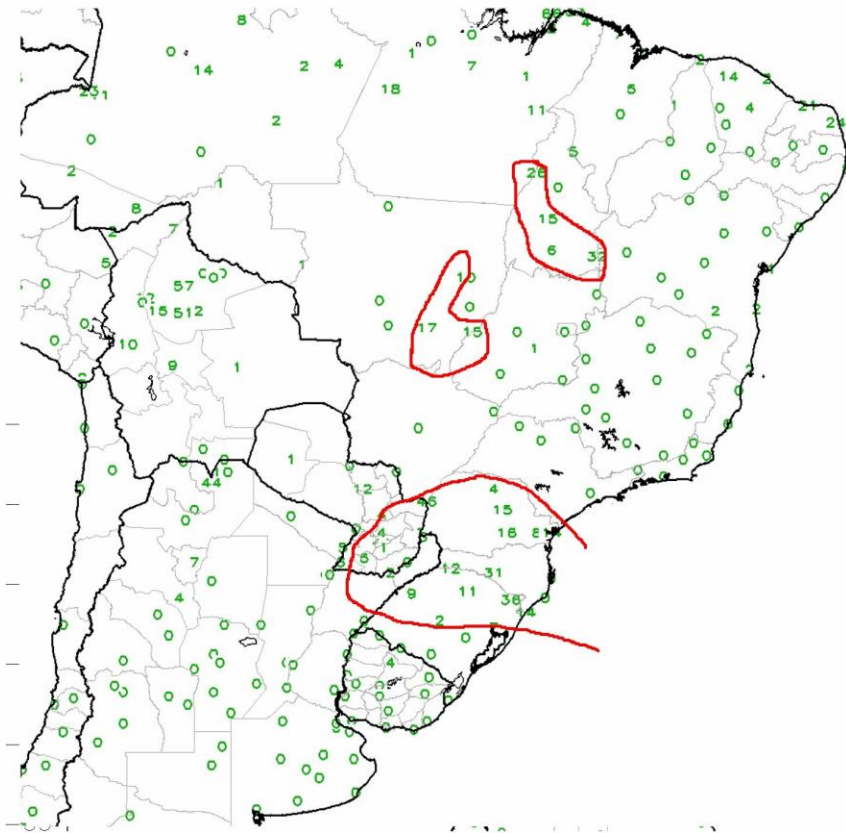
TUESDAY AFTERNOON SATELLITE clear over all of Argentina Paraguay and southeast/ southwest Brazil. Numerous but scattered storms over m 40% of Mato Grosso Northern Goias 60% Tocantins 30% western Bahia..



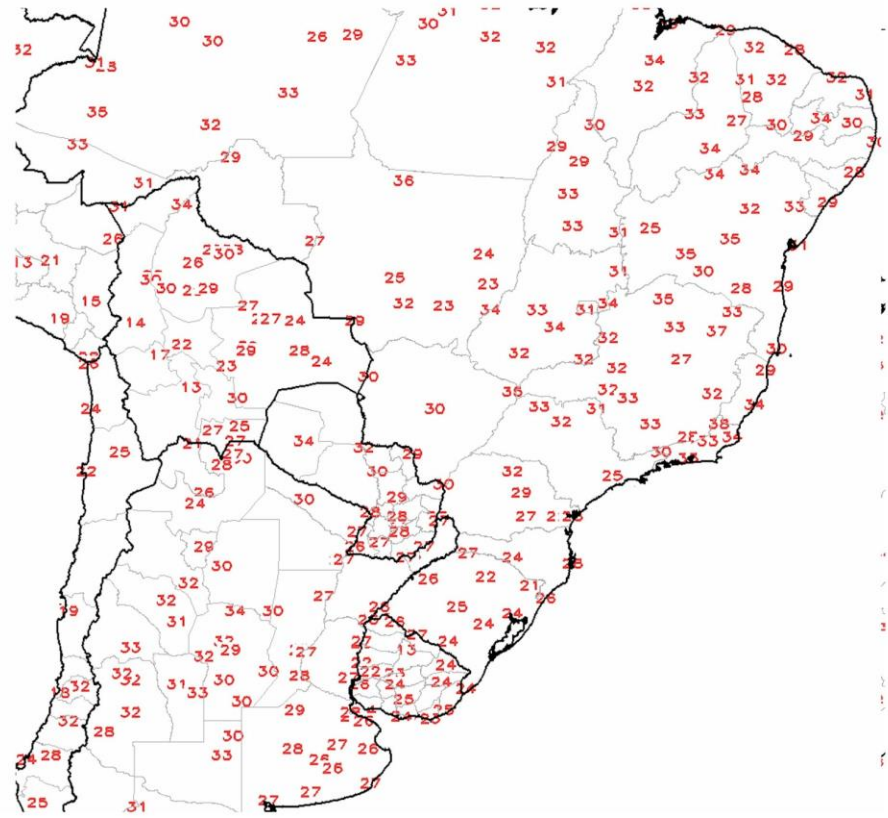
MARCH 13 ENDING AT 1201 AM 3/14/17 -- light to moderate rains fell over southeast Brazil in the amounts of 5 to 18mm/ 0.25 to 0.60" with 60% of coverage. 2 areas of moderate showers dropped 10-25mm/ 0.40-1.0" over central Goias and central Tocantins

MAX TEMPS MARCH 13 temps were seasonally warm over Argentina Paraguay and Brazil... for Mid March. Max temps were in 28-32c/ 83-90 F over all of Argentina and Paraguay. Most of western central and east central Brazil saw temps 30-34c/ 85-94f but southeast Brazil was a bit cooler... 24-28c 75-82f

GTS Station 24-hr Reported Precipitation (mm)
Period: 13Mar2017



GTS Station 24-hr Maximum Temperature (C)
Period: 13Mar2017

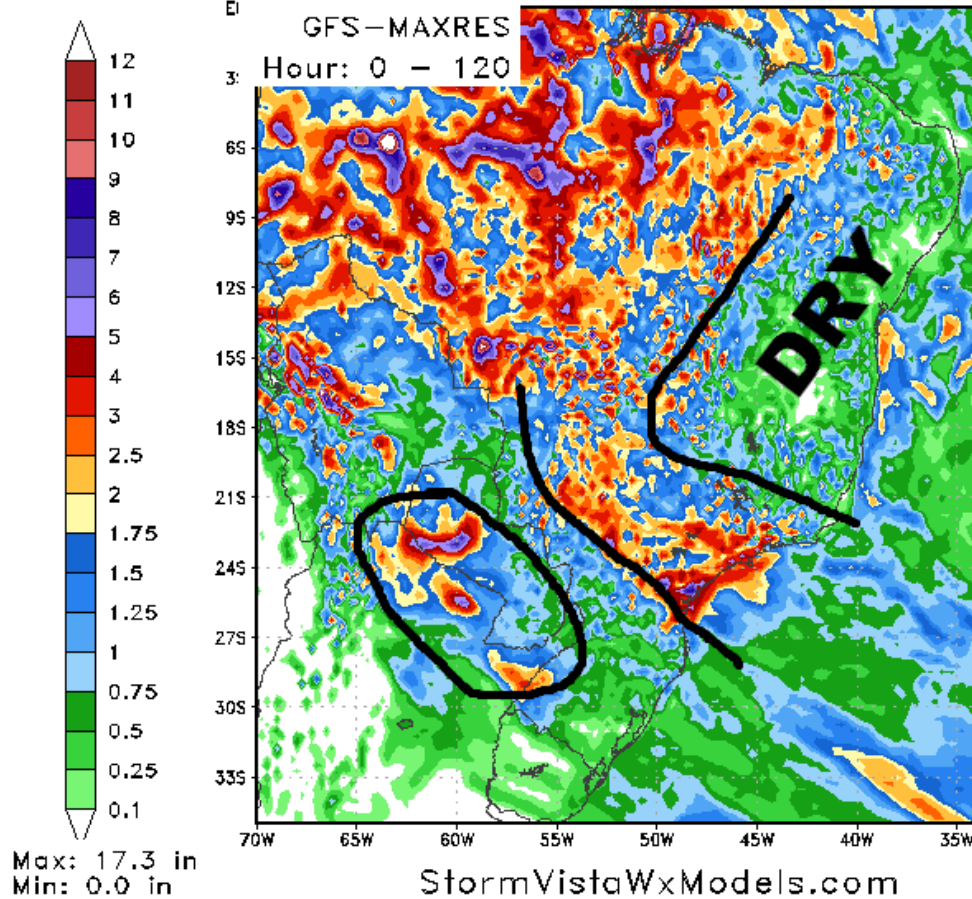


NEXT 5 DAYS

The weather models are in pretty good agreement all the next five days are few both models keep much of central and East Central Brazil continues through dry up which has been the case for much of last several months. Both models have some rain in Argentina but the GFS model has significantly heavier rain over Chaco and Formosa and Southern Paraguay and the European model as. Also both models show significant rains over much of southeastern Brazil into MGDS and significant portion of Mato Grosso. The rainfall amounts range from 1-4"/ 25-100mm with coverage between 60 and 70%.

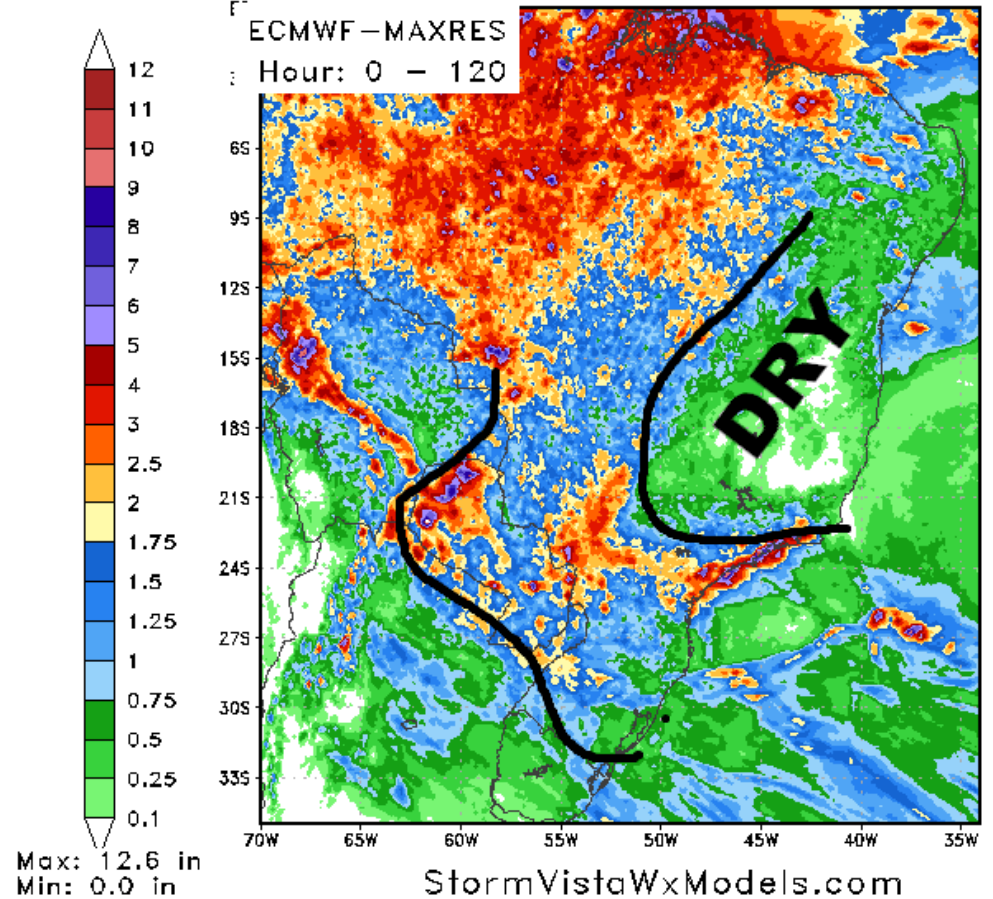
120 Hour Total Precipitation (in)

Valid: 12z Tue 14 Mar 2017 - 12z Sun 19 Mar 2017



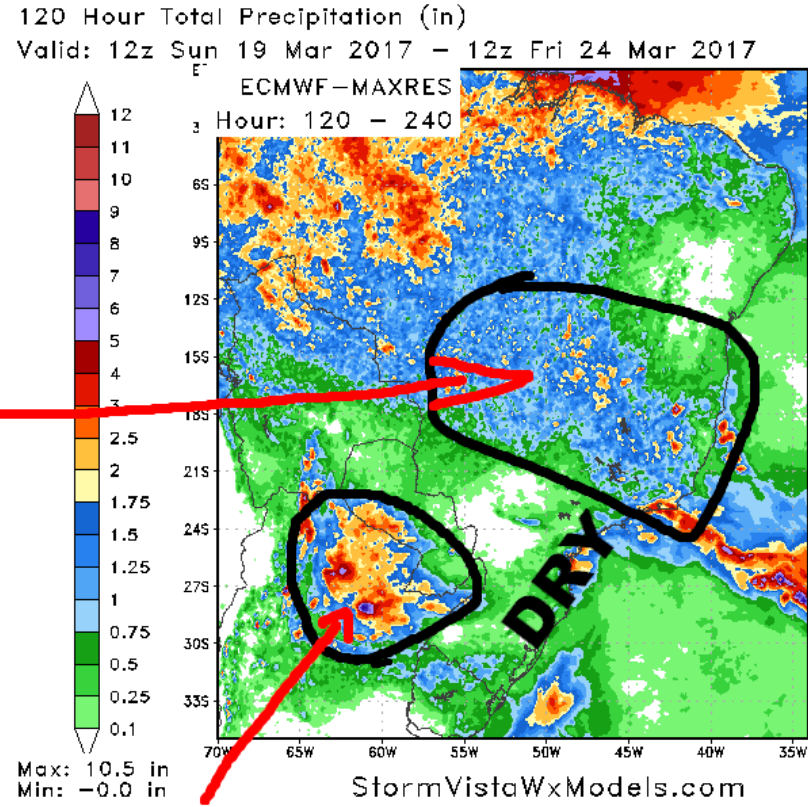
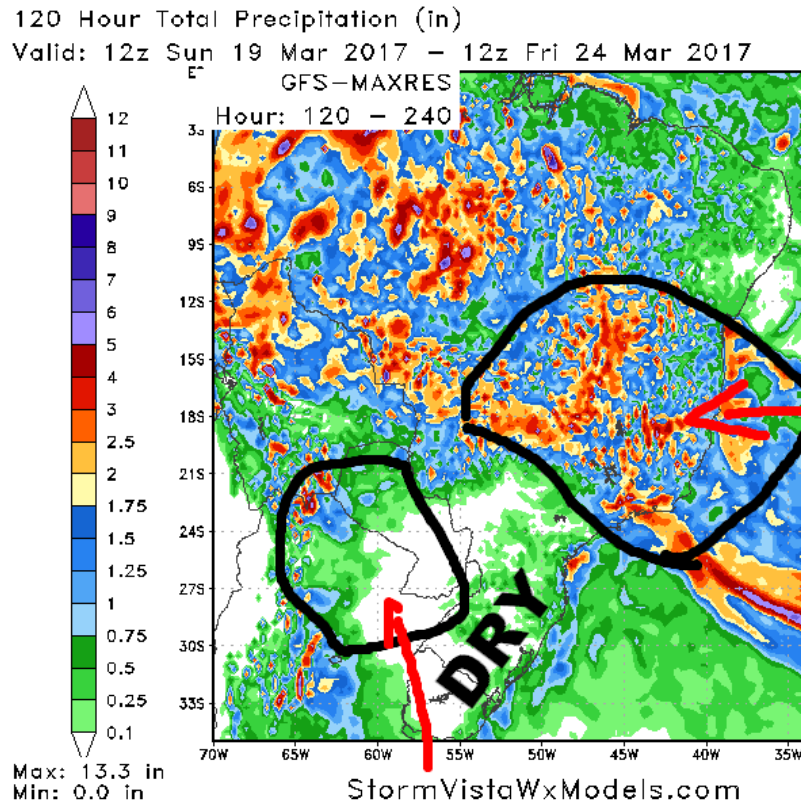
120 Hour Total Precipitation (in)

Valid: 12z Tue 14 Mar 2017 - 12z Sun 19 Mar 2017



6-10 DAY

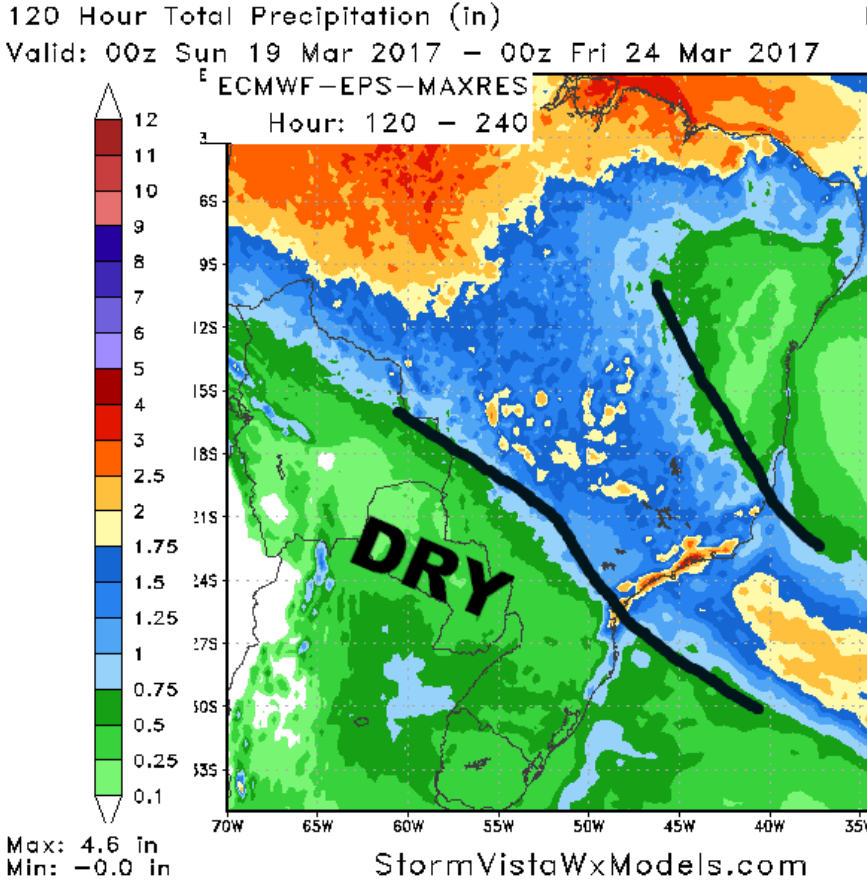
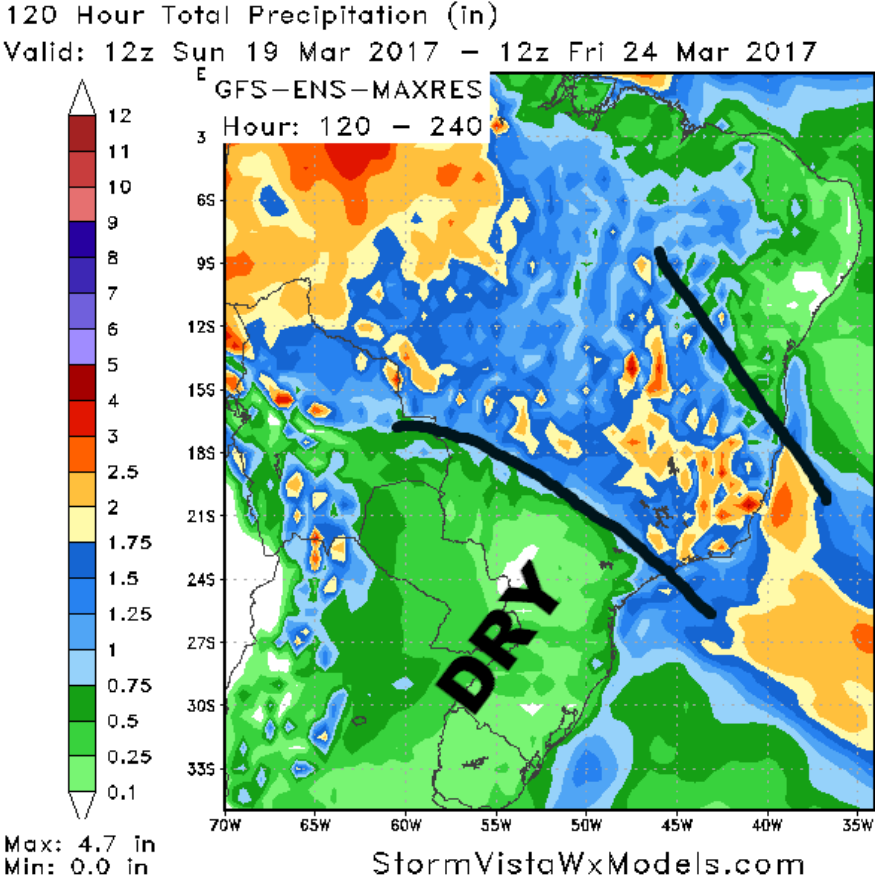
The models here are not in very good team. First as you can see the GFS model is quite dry over most of northern Argentina where is the European model has a significant thunderstorm cluster that dropped anywhere from 2 to 8"/ 50-400mm of rain covering much of Chaco and Formosa and western Corrientes. There is also significant difference between the models as to how much rain is going to fall over central and East Central Brazil. The GFS model has significant rains over northern Sao Paulo southern Minas Gerais all of Goias... 1-4"/25-100mm. Th the European model is similar with respect to the area of central and East Central Brazil being covered by the rain but the coverage is not as high in the rainfall amounts are significantly under 2 inches/ 50mm..



LOTS OF MODEL DIFFERENCES

ENSEMBLES

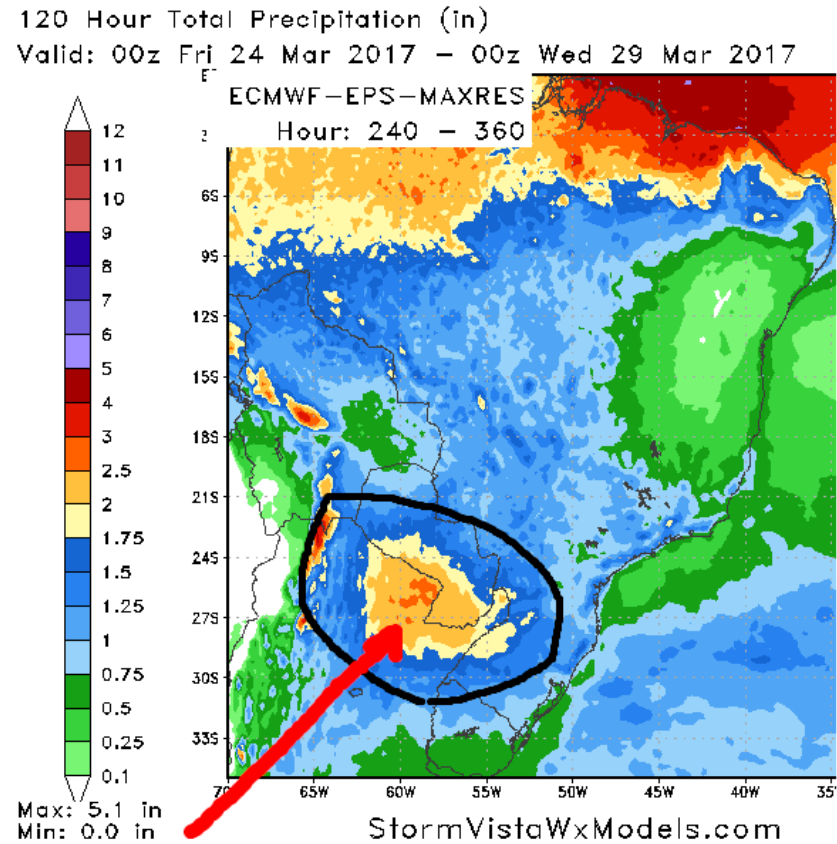
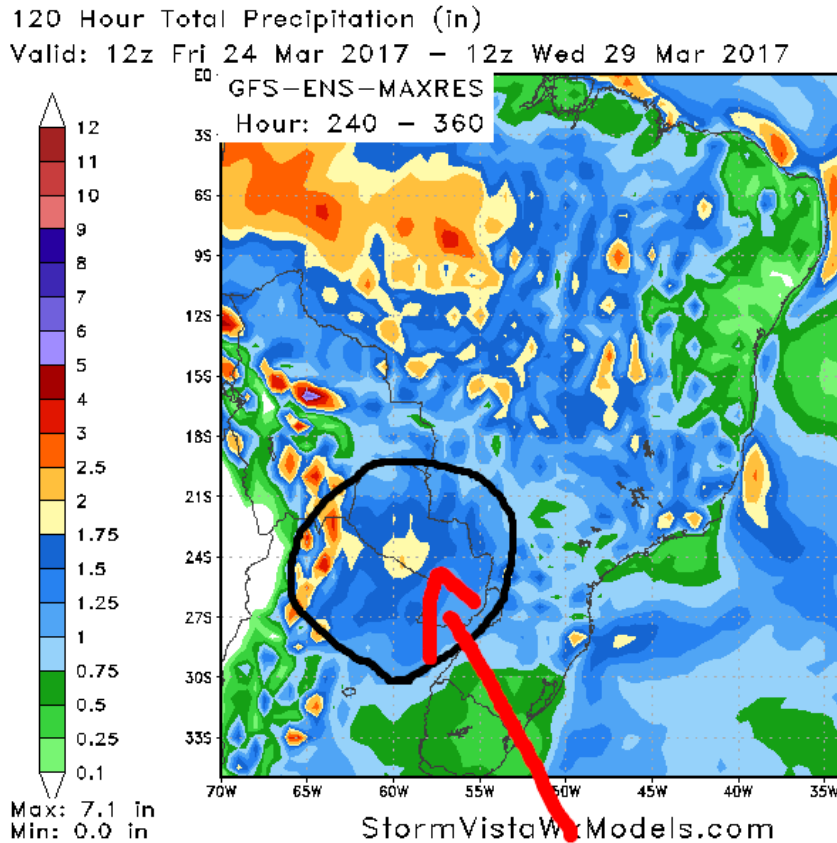
Fortunately the GFS and European ensembles are in good agreement. The European has more rain than the GFS does over northern and Central Argentina th but not significant step. Both models are in excellent agreement that there's going to be a band of significant rain coming in from the southwest Atlantic Ocean covering much of Sao Paulo southern Minas Gerais Goias and all of Mato Grosso. The rainfall amounts on these models range from 1 to 2.5"/ 25-60mm with 70% coverage.



ENSEMBLE IN GOOD AGREEMENT

11 - 15 DAY

There is pretty good model agreement in the 11 to 15 day. Both models shows significant rain with good coverage over all of Paraguay and the northern half of Argentina. The European in some bowl is a little heavier than the GFS but given the time range that this is 11 to 15 days... It's pretty good model agreement. There is some minor differences over how much rain falls over western and Central Brazil including Mato Grosso but the difference is that this time range are not significant.



GOOD AGREEMENT

DT wxrisk.com OFFICE 804 715 8330 CELL 804 307 8070