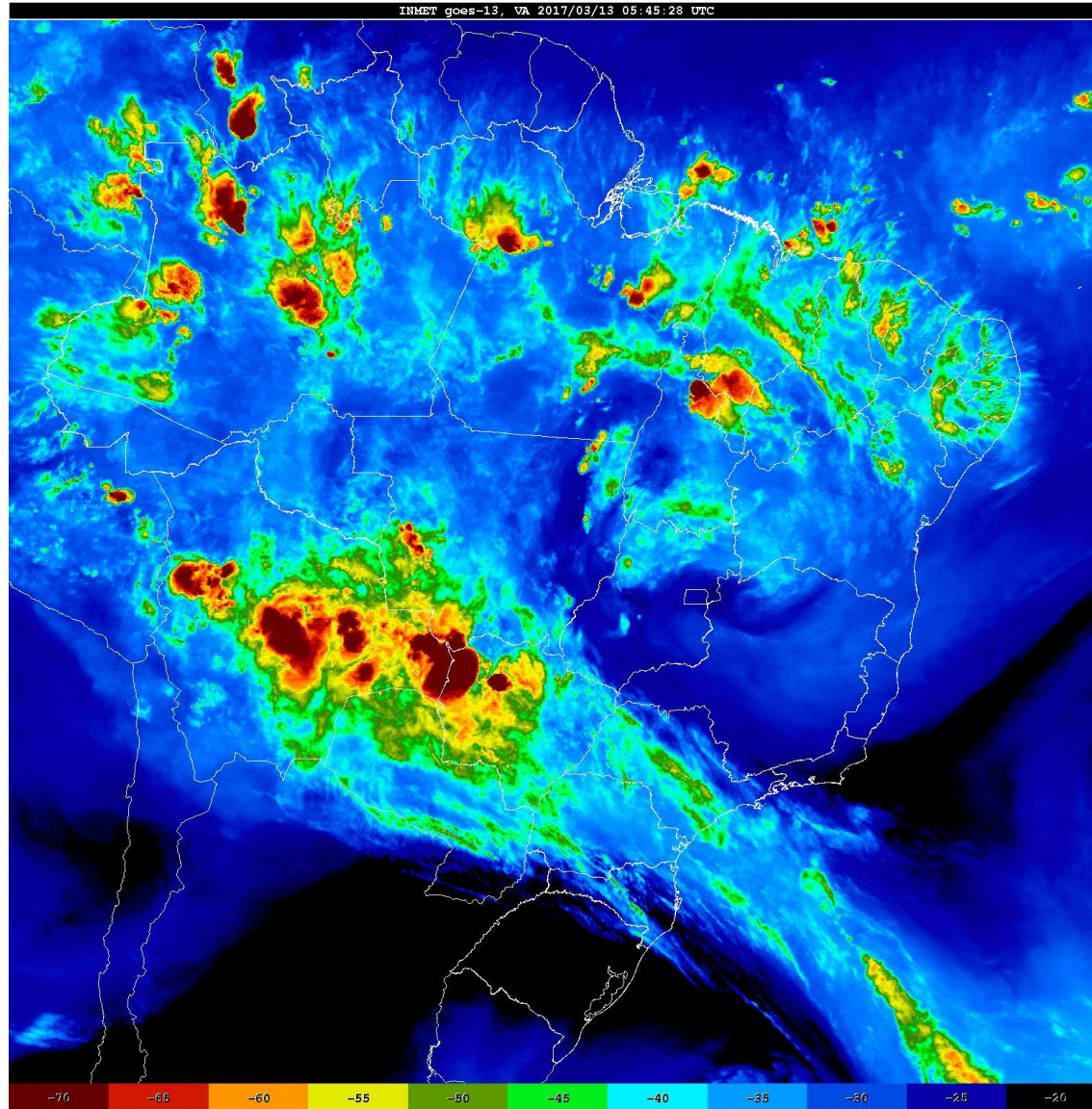


SOUTH AMERICA GRAIN WEATHER 3/12-13/17

OVERVIEW

Things look fairly quiet and South America all the next two weeks. The model agreement AND disagreements are not particularly noteworthy or outstanding. There is some disagreement as to how much rain is going to fall over Paraguay and Southeast Brazil all the next five days. Argentina stays dry into the 6 to 10 day as those most of Southeast Brazil and the models are also in good agreement as to the significant area of rain which is likely over much of the central and southwestern and Western Brazil. 11-15 day the European model is significantly wetter over Argentina than the GFS model while the GFS model is significantly wetter over the central and southwestern Brazil..

SUNDAY EVENING SATELLITE the late Sunday night satellite picture shows a cluster of heavy thunderstorms th over the western portions of MGDS into Eastern Bolivia. Most other areas are rain and thunderstorms free..

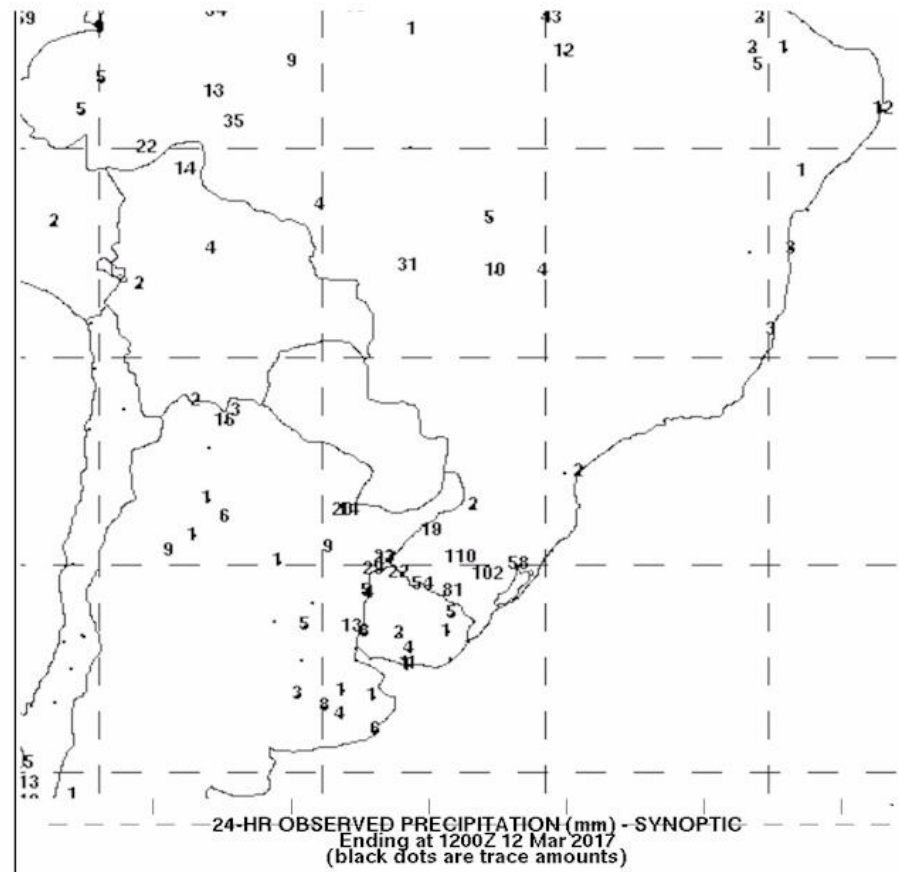
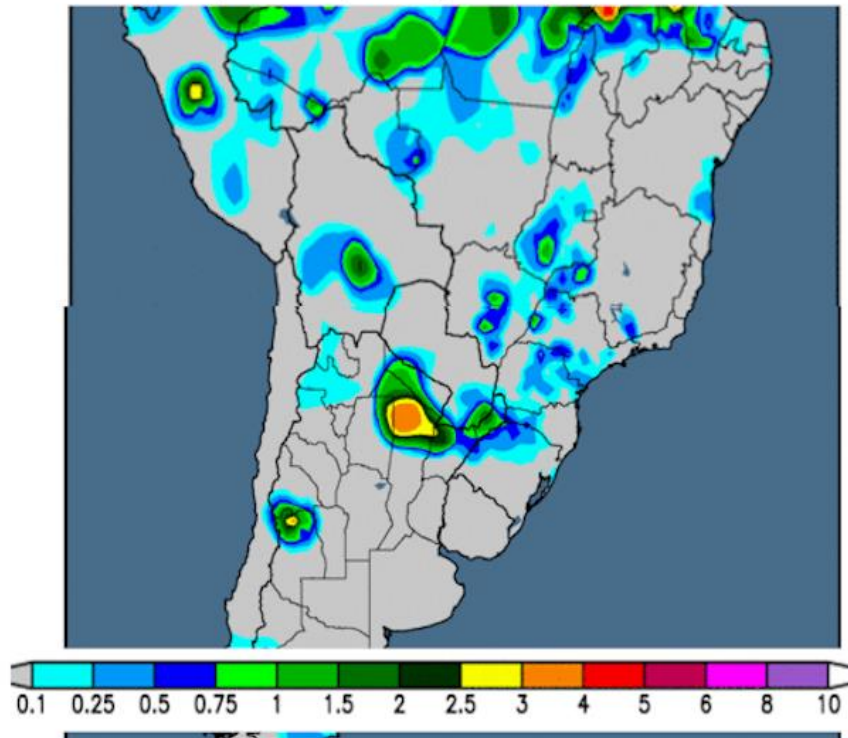


MARCH 10-11 ENDING 0700 EDT/ 0600 CST -- Eastern Chaco and Northern Sante Fe saw a t-storm cluster that dropped 1-3.5"/25-90mm but the rest of Argentina was dry. There were scattered light to moderate showers over of 0.25-1.0"/6-25mm with 40% coverage over MGDS Parana Sao Paulo and southern Goias .

MARCH 11-12 ENDING 0700 EDT/ 0600 CST -- There was heavy rains up to 110mm/ 4.25" in RGDS in southeast Brazil with 60% coverage. Much lighter rains of 2-12mm/ 0.15-0.50" with 50-60% coverage fell over Buenos Aires Entre Rios Santa Fe and Corrientes. There were some moderate rains over 40% of Mato Grosso from 5-30mm/ 0.25-1.25". All other areas of Brazil was dry

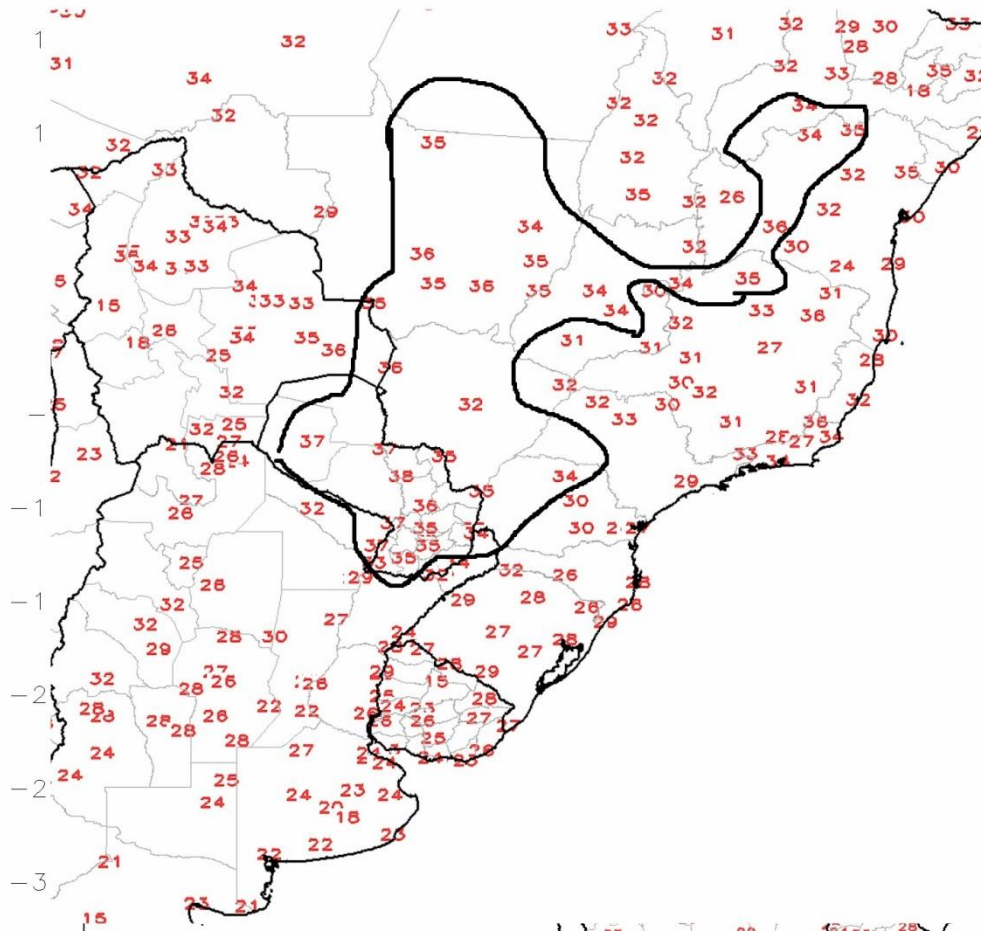
24-hour Precipitation Analysis

Observed precipitation (inches) through 12 UTC 11 Mar 2017



GTS Station 24-hr Maximum Temperature (C)

Period: 11Mar2017



MAX TEMPS MARCH 11 The Black Line shows where max temps reached 34c/ 95f or higher . Most of Argentina saw max temps 23-28c / 74- 82 as did mst fo southeast Brazil

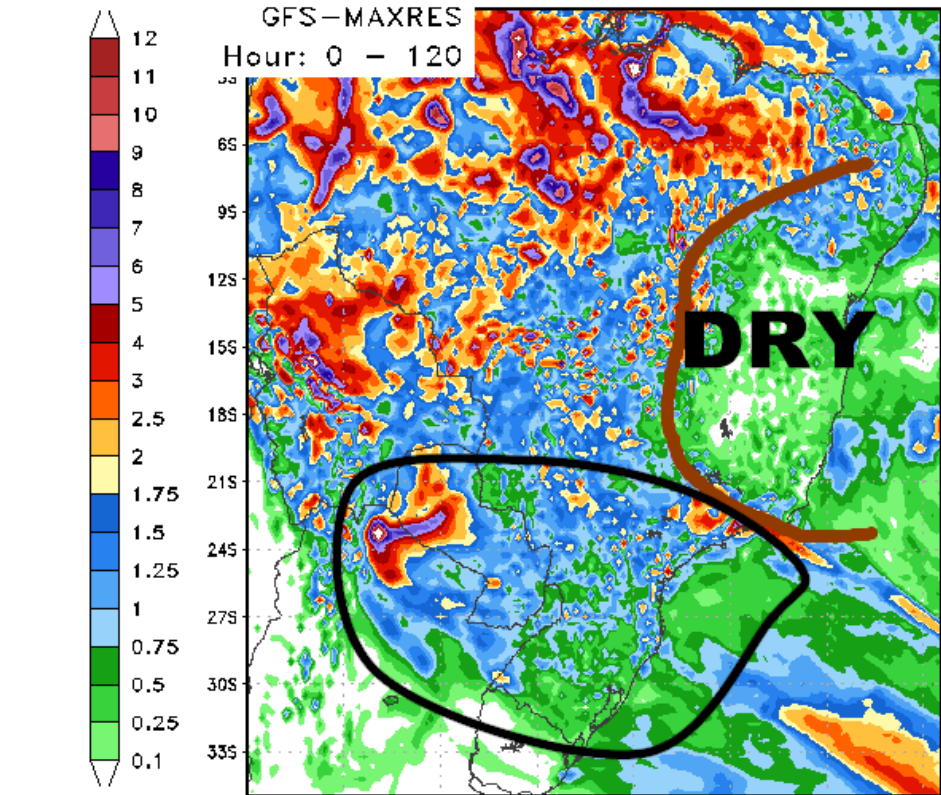
NEXT 5 DAYS

The models are in fair agreement over the next five days Most of Central Argentina is dry but there are areas of moderate rains over the northern third or northeast third of Argentina -depending on which model you are considering. The GFS model on the left has a lot less

rain over southeastern Brazil and Paraguay than the European does on the right. Both models keep most of East Central Brazil quite dry....and Tocantins.

120 Hour Total Precipitation (in)

Valid: 00z Mon 13 Mar 2017 - 00z Sat 18 Mar 2017

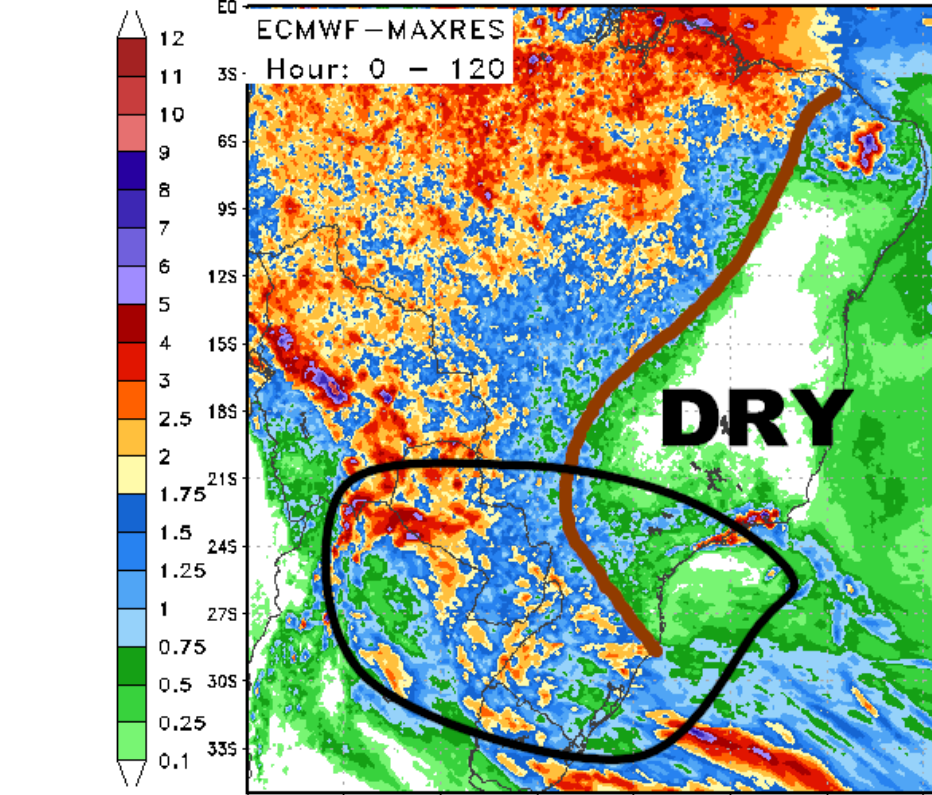


Max: 14.6 in
Min: 0.0 in

StormVistaWxModels.com

120 Hour Total Precipitation (in)

Valid: 12z Sun 12 Mar 2017 - 12z Fri 17 Mar 2017



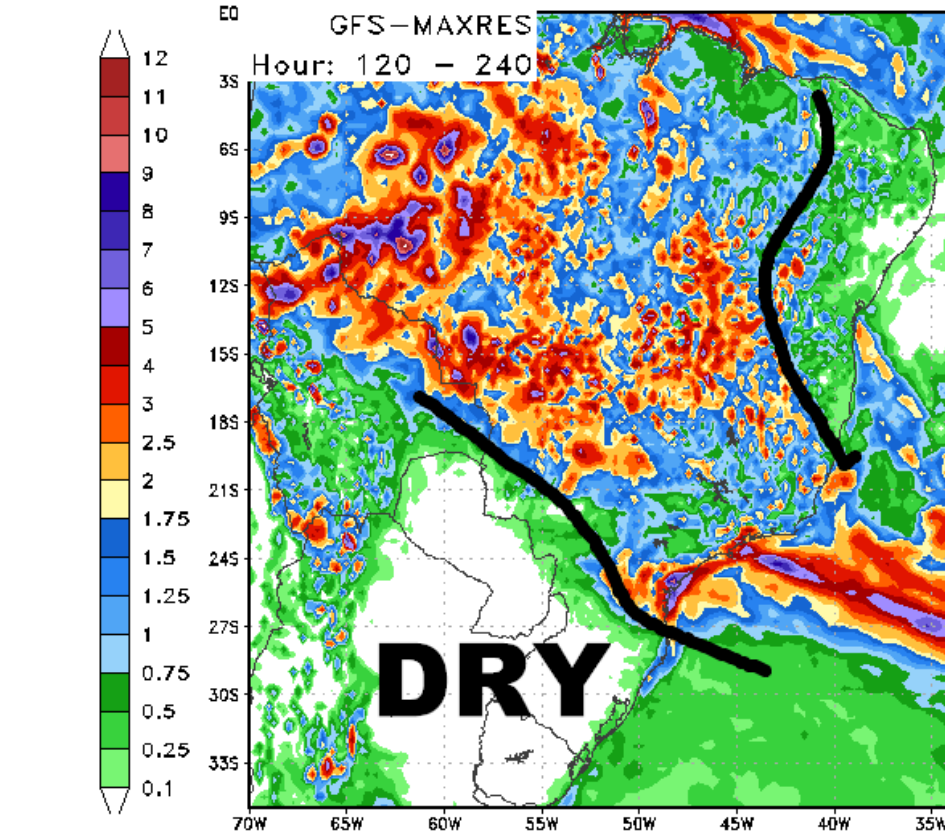
Max: 11.2 in
Min: 0.0 in

StormVistaWxModels.com

6-10 DAY

The models are in good but not great agreement over the 6-10 days. Both models keep all of Argentina ... southeast Brazil ...and Paraguay quite dry. And both models show a significant area of moderate to heavy rains ranging from 1-5 inch / 25-125mm range over much of Mato Grosso MGDS Parana. The GFS model has a lot more significant rain and coverage over Goias an Sao Paulo then the European.

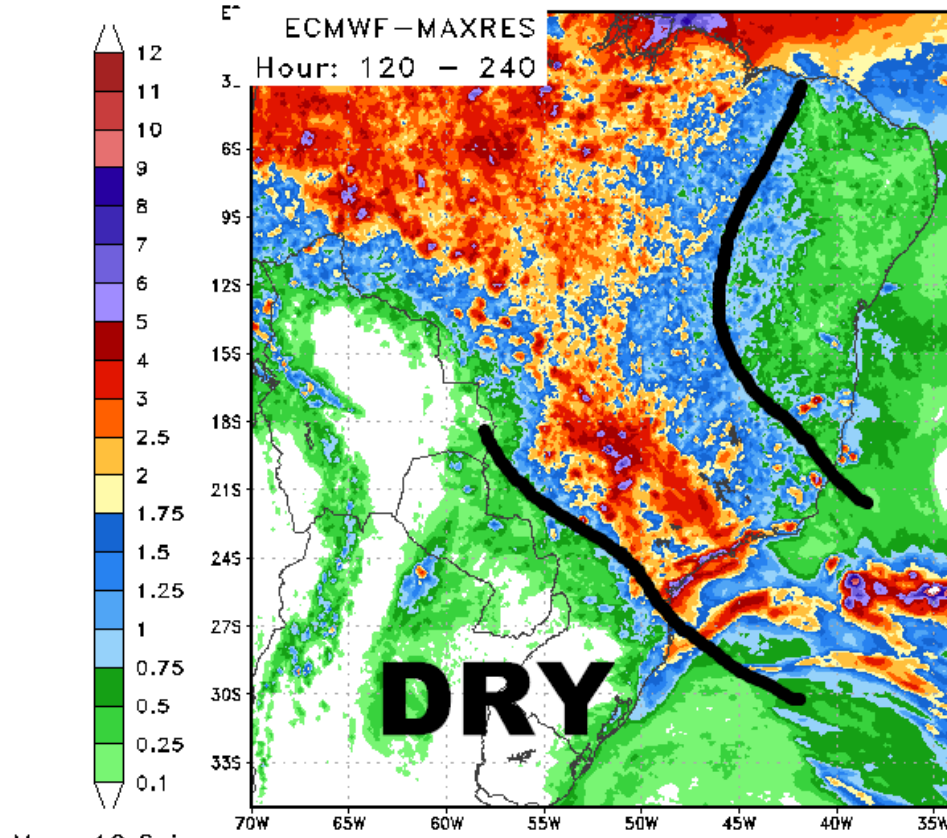
120 Hour Total Precipitation (in)
Valid: 00z Sat 18 Mar 2017 - 00z Thu 23 Mar 2017



Max: 16.2 in
Min: 0.0 in

StormVistaWxModels.com

120 Hour Total Precipitation (in)
Valid: 12z Fri 17 Mar 2017 - 12z Wed 22 Mar 2017



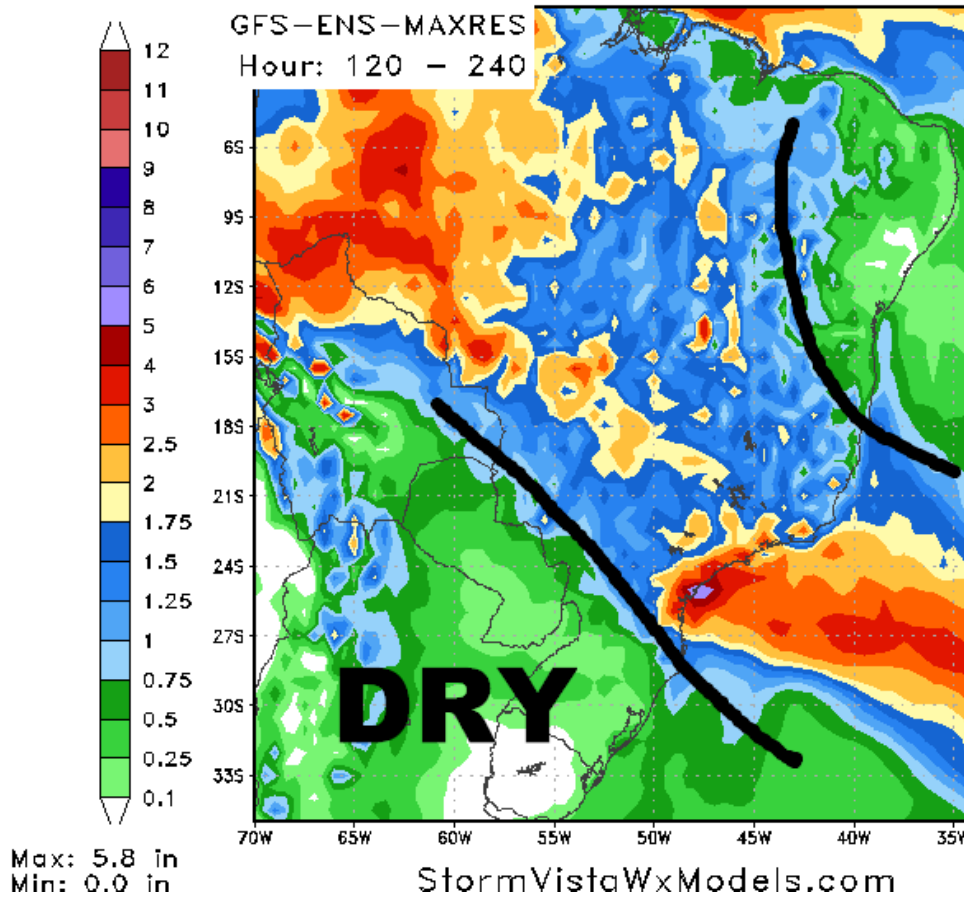
Max: 19.6 in
Min: 0.0 in

StormVistaWxModels.com

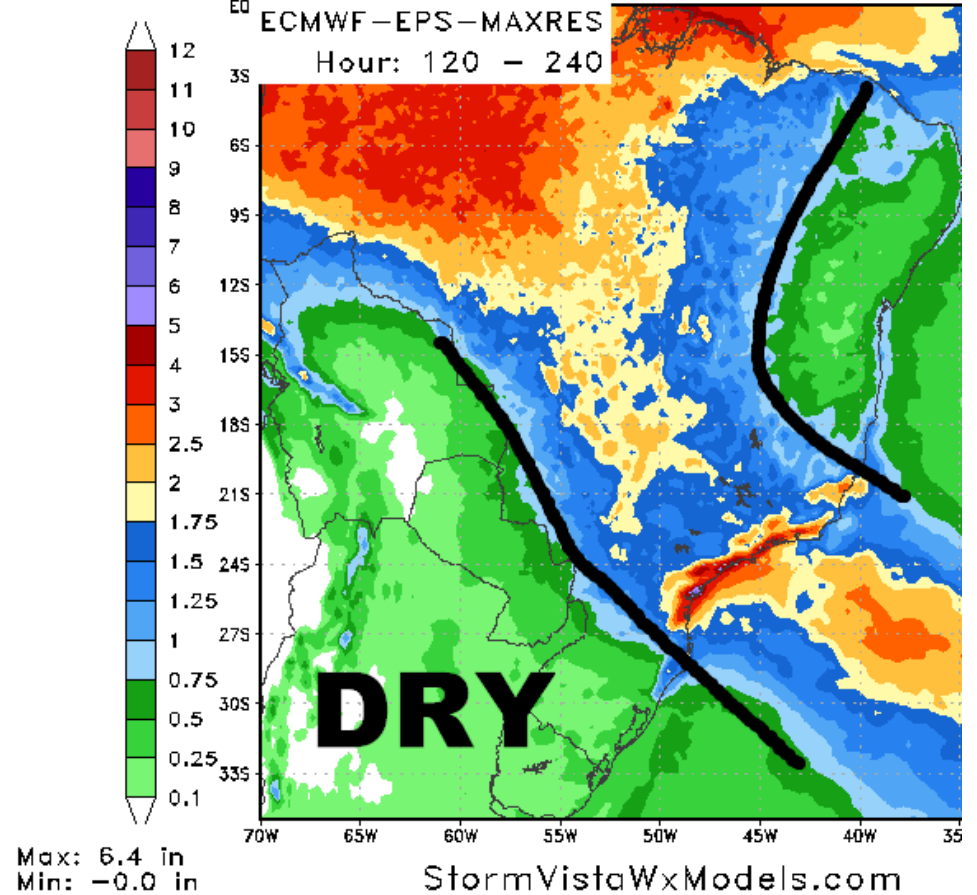
ENSEMBLES

The GFS and European ENSEMBLES are in very good agreement. Notice that Southeast Brazil ...Paraguay ...and all of Argentina remains dry. There is pretty good agreement on a wide band of significant rain ranging from 1 to 3 inches covering most of Parana ...Sao Paulo ...MGDS ...Mato Grosso ...and Goias.

120 Hour Total Precipitation (in)
Valid: 00z Sat 18 Mar 2017 - 00z Thu 23 Mar 2017



120 Hour Total Precipitation (in)
Valid: 12z Fri 17 Mar 2017 - 12z Wed 22 Mar 2017



11 - 15 DAY

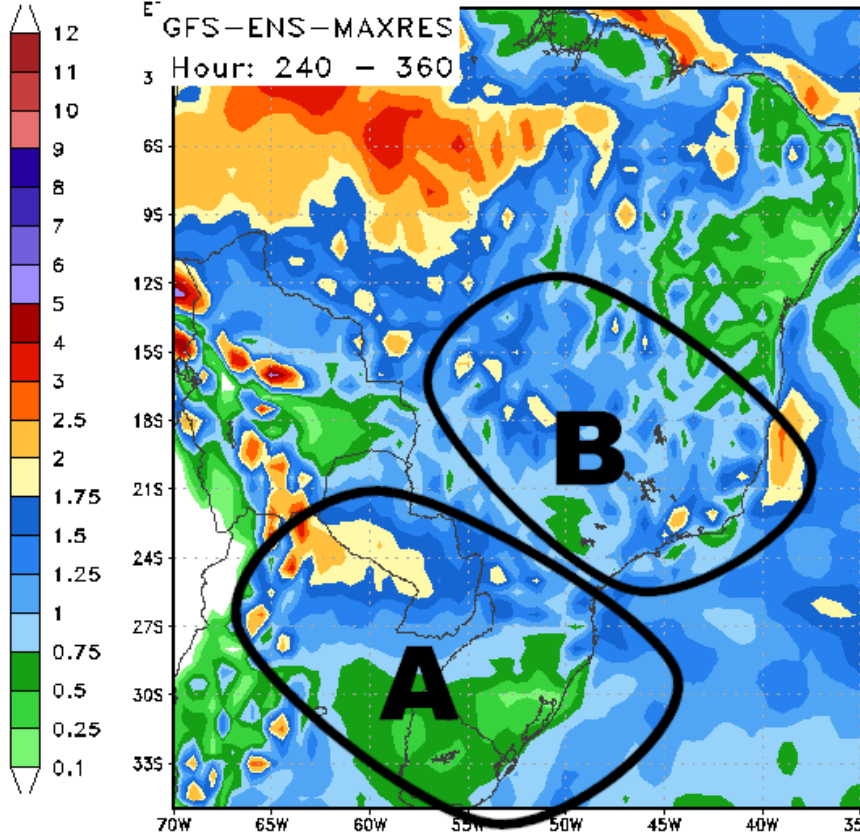
In the 11 to 15 day there are some differences. First in AREA A ... we can see that the European model has a lot more rain over central and northern Argentina when compared to the GFS model which only showed moderate and scattered rains. In AREA B the GFS model has a lot more moderate rain over MGDS Parana Sao Paulo and Goias when compared to the European model.

120 Hour Total Precipitation (in)

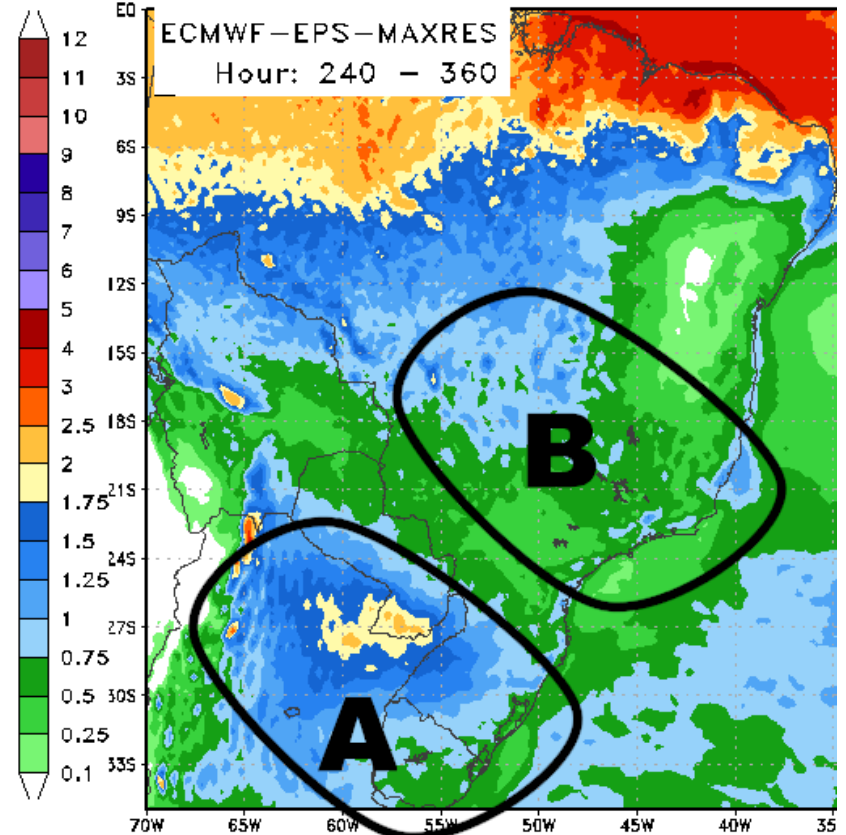
Valid: 00z Thu 23 Mar 2017 - 00z Tue 28 Mar 2017

120 Hour Total Precipitation (in)

Valid: 12z Wed 22 Mar 2017 - 12z Mon 27 Mar 2017



StormVistaWxModels.com

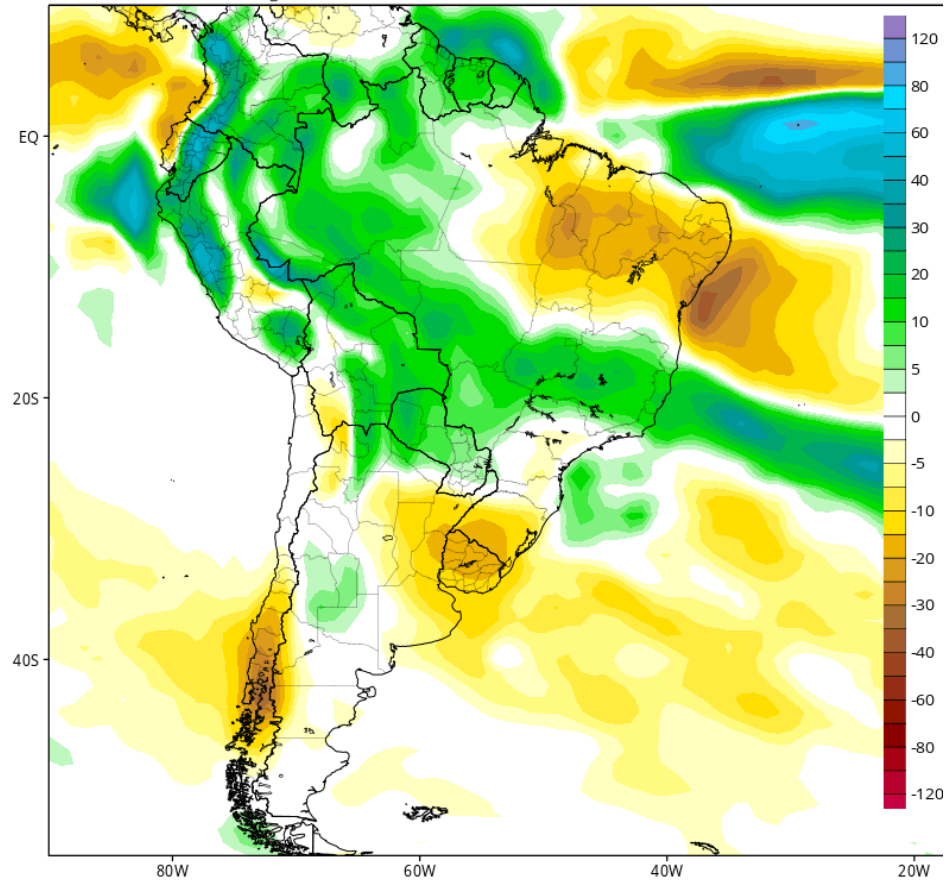


StormVistaWxModels.com

16 - 20 DAY

The Sunday CFS model from Sunday shows that in the 16 to 20 day the main band of rain is going to shift north in from across much of Mato Grosso MGDS into southern Goias and northern Sao Paulo and perhaps reach southern Minas Gerais. The shift of the main band of rain for this timeframe into Central Brazil means that most of Argentina is going to turn dry than normal

CFSv2 Accumulated Precip. Anomaly (mm) from 12z26Mar2017 to 12z02Apr2017 (Days 15-21)
Average of last 48 forecasts (12 runs x 4 members)
Init: 18z Mar 09 2017 through 12z Mar 12 2017



DT wxrisk.com OFFICE 804 715 8330 CELL 804 307 8070