

SOUTH AMERICA / AUSTRALIAN GRAIN WEATHER

11/13/17 OVERVIEW

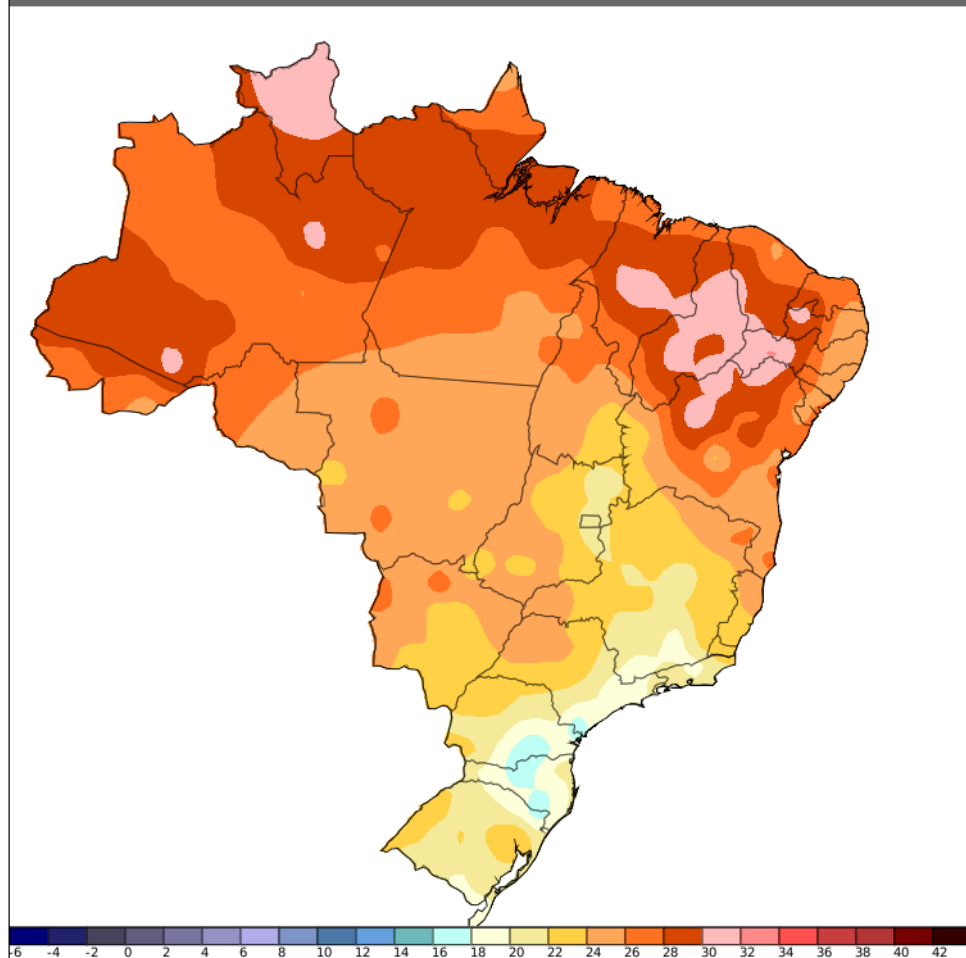
SUMMARY

There was significant rain over the weekend and much of the dry areas of western and Central Brazil which help keep the temperatures much cooler than they have been over the past several weeks. Once this current northern band of rain Peters out all the model activity clearly shows to significant rain redeveloping back voer o western ...southwestern ...and southeastern Brazil. Most of Argentina is dry over all of the next two weeks. This time around the European model is almost as wet as the GFS for Brazil so perhaps the rains will really show up and have significant coverage in the 6 to 10 day and in the 11 to 15 day

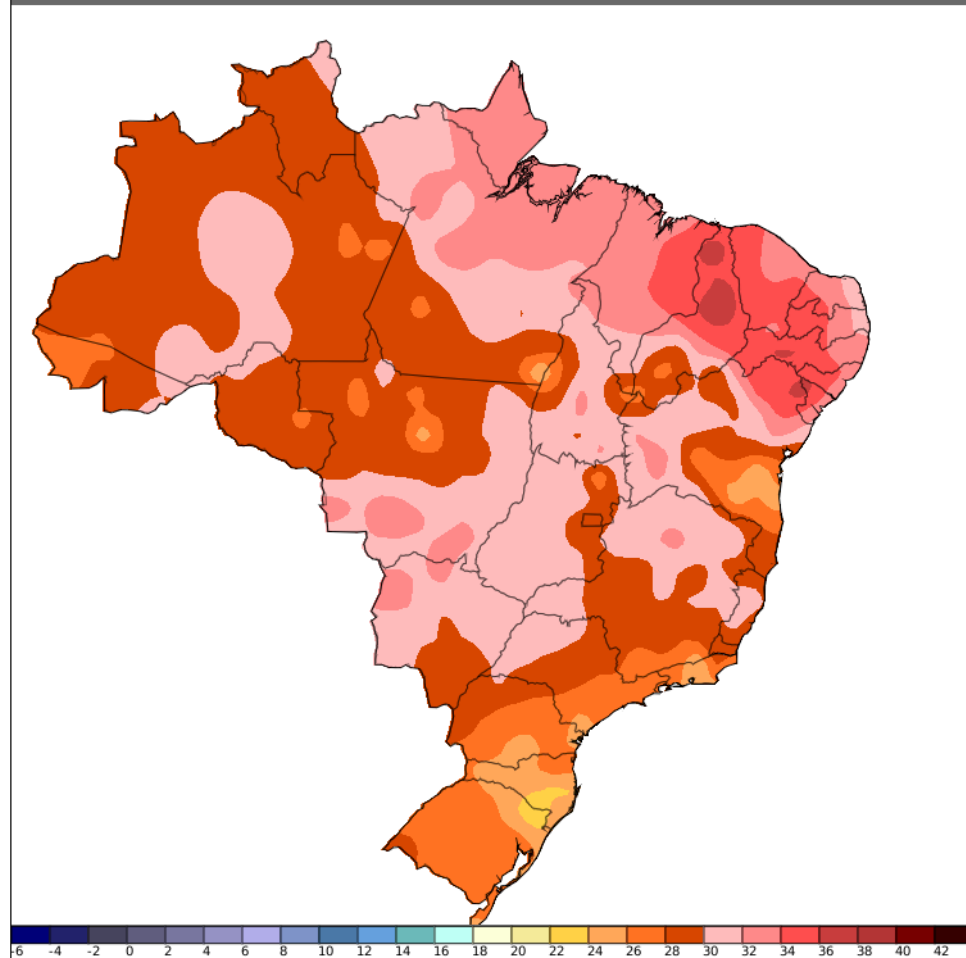
TEMPS NOV 11 NOV 12

As you can see the heat returned to much of the interior portions of Brazil on November 4 and November 5. Most the readings however were not as extreme as what we saw only 10 days ago. That being said all of eastern and southeastern Brazil as well as Paraguay and most of Argentina had seasonal temperatures.

Instituto Nacional de Meteorologia - INMET
Temperatura Máxima (°C)
Informações Sinóticas do dia 12/11/2017 às 00:00 UTC



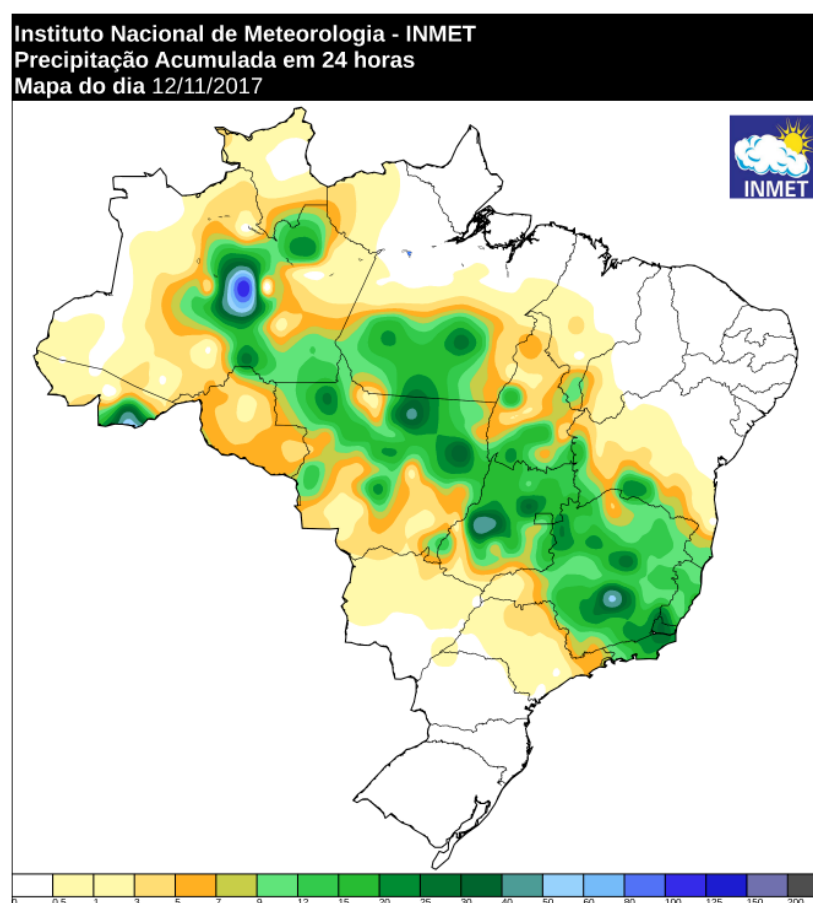
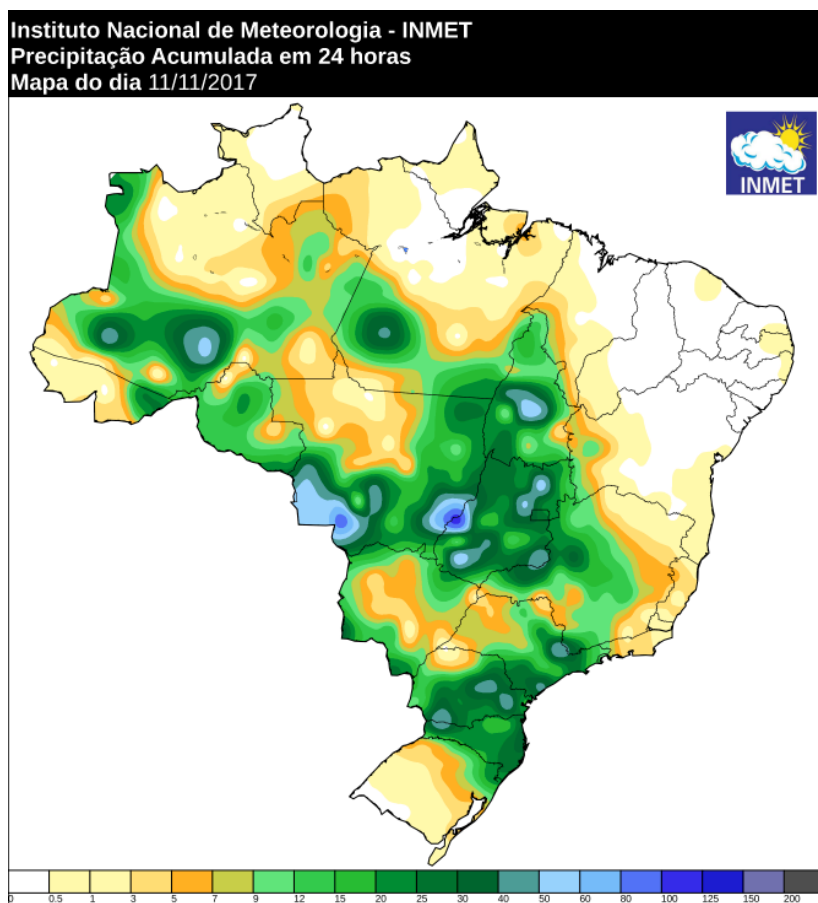
Instituto Nacional de Meteorologia - INMET
Temperatura do Ar (°C)
Informações Sinóticas do dia 13/11/2017 às 15:00 UTC



RAINFALL last 2 days - NOV 11 and NOV 12 ending 0000 UTC

As you can see over the weekend significant rains finally showed up over much of the dry areas of Brazil and the areas which have been missing much of the rain over the past couple of weeks. On November 11 central and eastern Mato Grosso all of Goiás Tocantins and western half of Minas saw 15-75mm/ 0.6-3.0" rains with several small areas of 75-100mm/ 3-4" . Coverage was 70-80%. There was a 2nd area of good rains over Parana Santa Catarina and eastern Sao Paulo of 12-50"/ 0.50-2.0" with 60% coverage

Rainfall on the 12th was widespread over western central . central and eastern Central Brazil but not as heavy- 12 -50mm/ 0.50-2.0" with 60-70% coverage. All of southwest and southeast Brazil was dry.



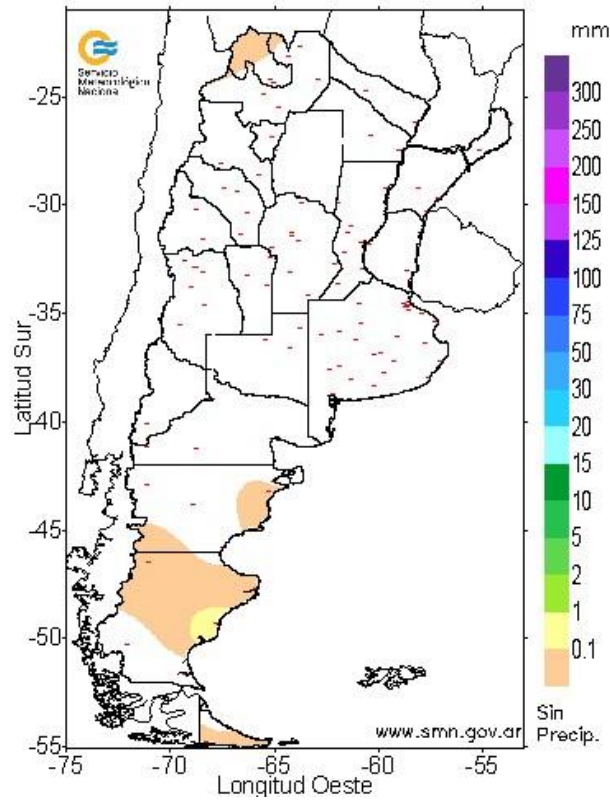
All of Argentina was dry November 11 and November 12

NOV 12

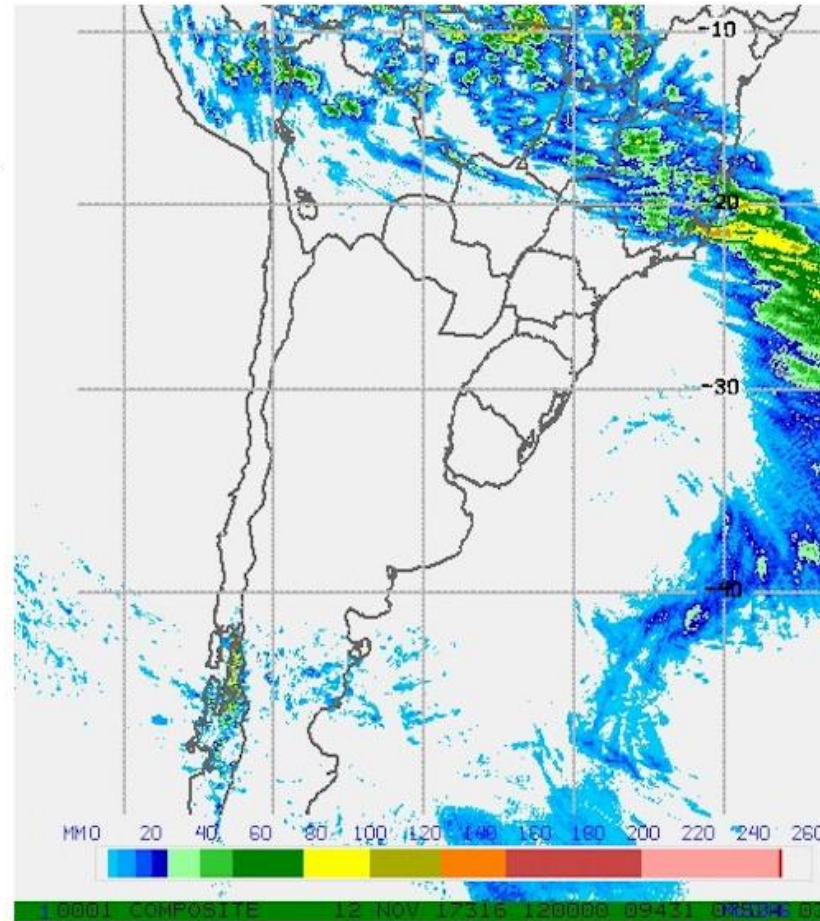
Servicio Meteorológico Nacional

PRECIPITACION (EN MILIMETROS) ACUMULADA EN 24 HORAS

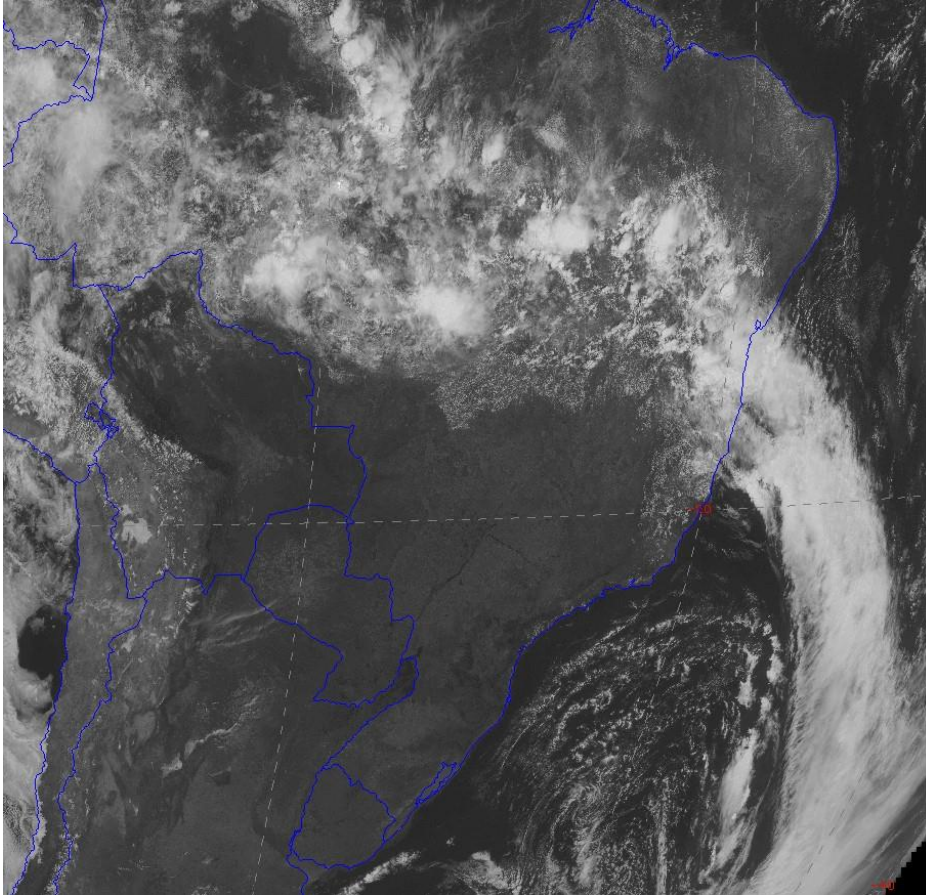
Los valores corresponden al periodo comprendido entre las
9 hs. del 12 / 11 / 2017 y las 9 hs. del 13 / 11 / 2017



10V 11



The late morning satellite picture shows clear skies across all of Argentina... Paraguay... southwest and southeast Brazil . There is a band or plume of clouds coming in from the southern Atlantic Ocean into Bahia Tocantins northern Mato Grosso..

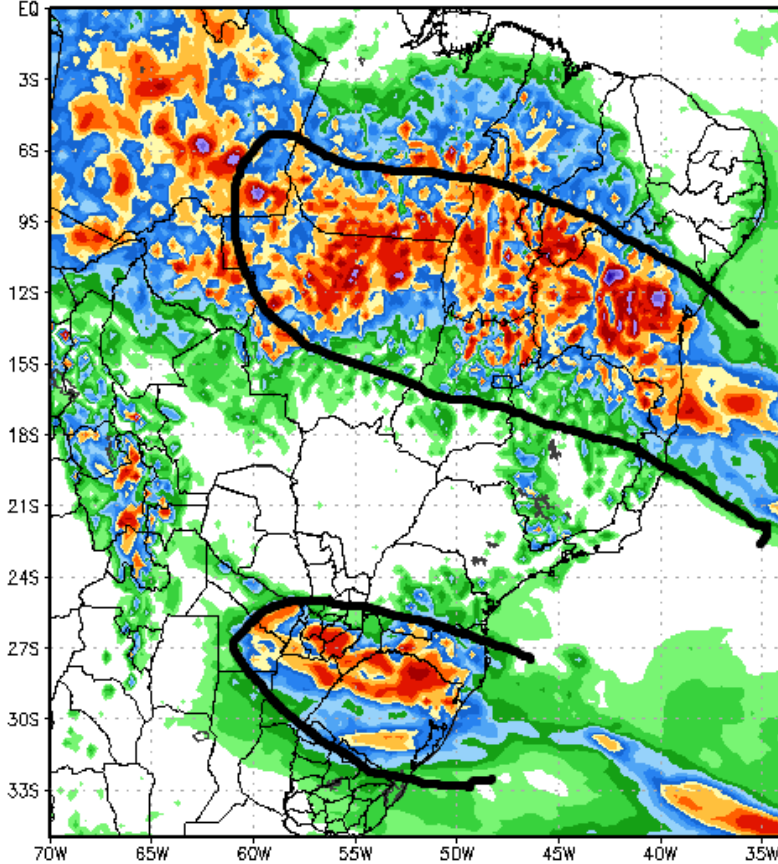


1-5 DAY

There is not much change from what we saw last Friday. Both models show 2 distinct areas of rain. The largest continues to be centered across most of Bahia Tocantins into northern Mato Grosso. Again the GFS model is significantly wetter with these rains when compared to the European model. Based on the current satellite picture the rains do not look that impressive so the European model that probably

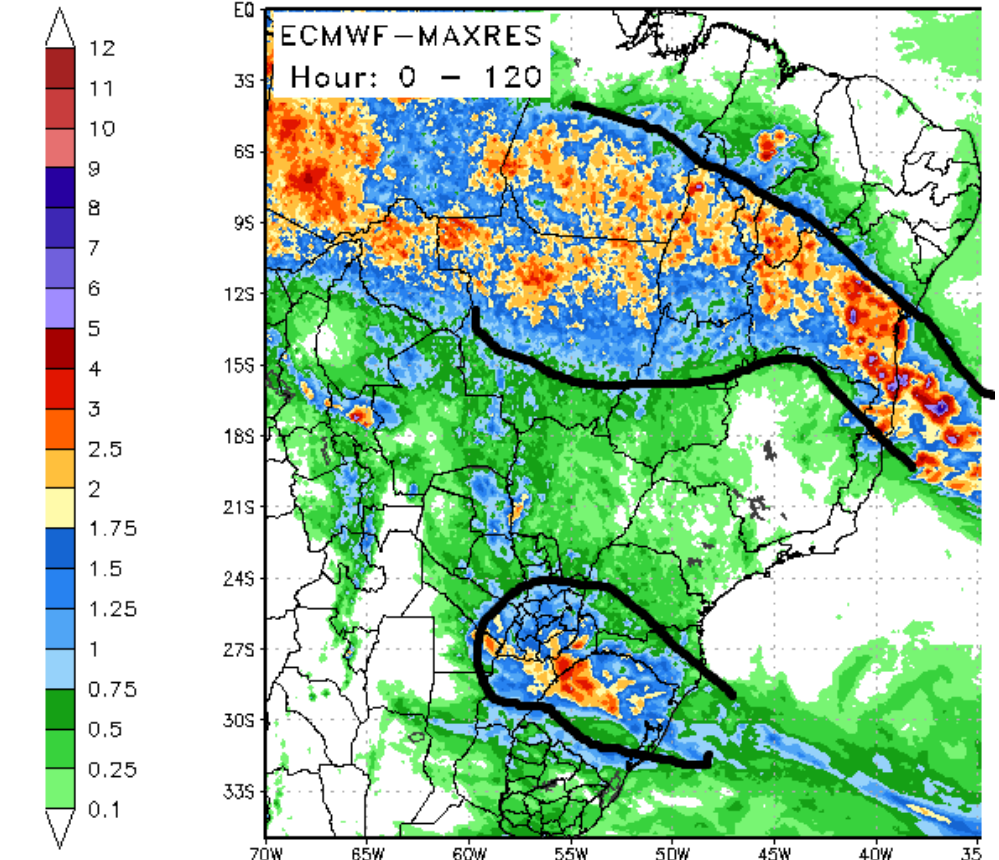
correct. The GFS rainfall amounts range from 1-6"/ 25-150mm whereas the Euro is 1-3"/ 25-75mm. The second area of rain is found developing over southeastern Brazil - RGDS into Santa Catarina with amounts of 1-4" / 25-75mm on the GFS and 1-3"/ 25-75mm on the European model. Some of this rain extends into northeastern Argentina but for the most part Argentina is dry all the next five days. This is also the case for areas such as southern Mato Grosso all of MGDS Sao Paulo southern Goias and most of Minas Gerais

120 Hour Total Precipitation (in)
Valid: 00z Mon 13 Nov 2017 - 00z Sat 18 Nov 2017



Max: 8.5 in
Min: 0.0 in

120 Hour Total Precipitation (in)
Valid: 00z Mon 13 Nov 2017 - 00z Sat 18 Nov 2017



Max: 9.1 in
Min: 0.0 in

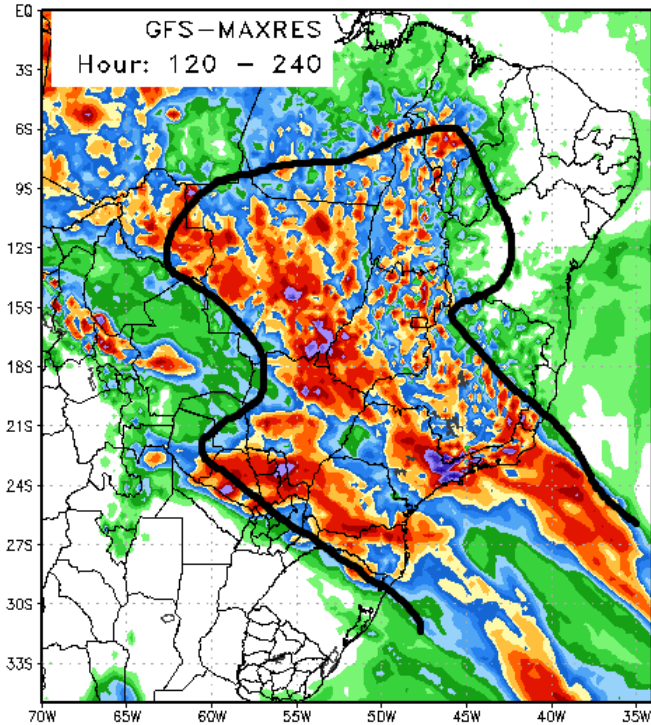
StormVistaWxModels.com

6-10 DAY.

Both operation models bring back significant rains across most of Brazil in this timeframe. As you can see the models are in pretty good agreement as to the overall precipitation or rain shield but there are few differences. The European model seems to have the heaviest rains of 2-6" /50-150mm inches centered over northern Sao Paulo and southern half of Minas Gerais. The GFS model has a lot less rain over the southern half of Minas Gerais and more rains over Paraguay into Parana and over the heart of Mato Grosso. Again notice that all of Argentina is either mostly dry or completely dry in the 6-10D.

120 Hour Total Precipitation (in)

Valid: 00z Sat 18 Nov 2017 - 00z Thu 23 Nov 2017

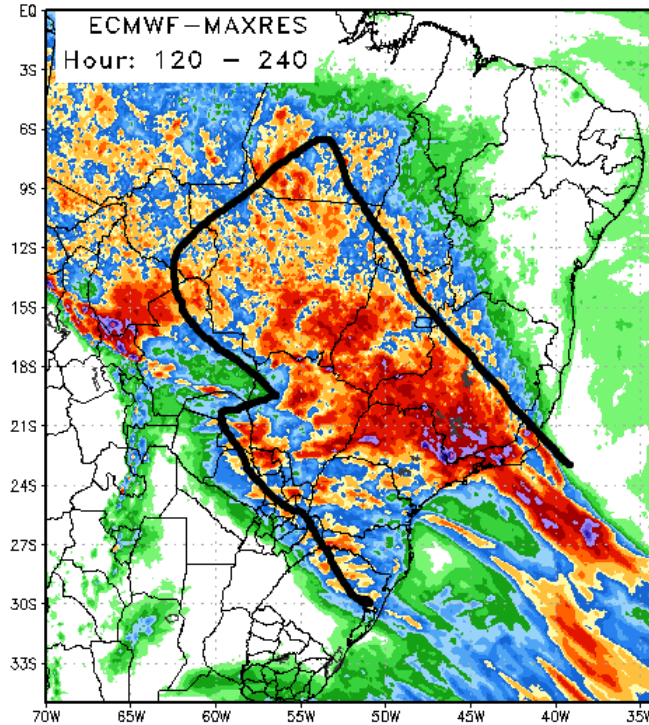


Max: 11.2 in
Min: 0.0 in

StormVistaWxModels.com

120 Hour Total Precipitation (in)

Valid: 00z Sat 18 Nov 2017 - 00z Thu 23 Nov 2017



Max: 11.1 in
Min: 0.0 in

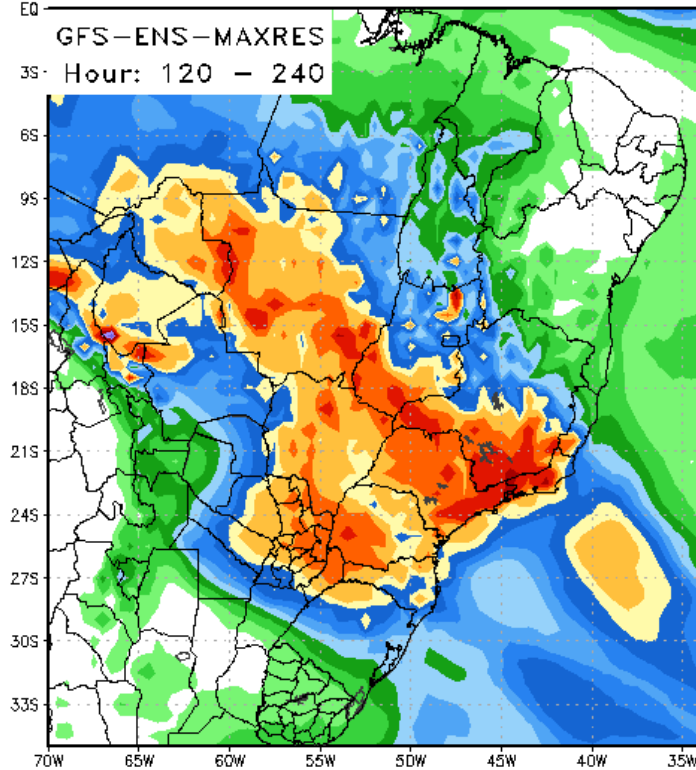
StormVistaWxModels.com

6-10 DAY ENSEMBLE

6-10D ensemble remains in pretty good agreement with each other. There are some minor differences for example the GFS has a significantly more rain over MGDS and Paraguay than the European model does. However the GFS ensemble does show significant rains over the southern half of Minas Gerais -- which is different from the operational GFS model shown above and much closer to the European model which has all this rain over southern half of Minas. In other words the GFS ensembles supports that idea strongly..

120 Hour Total Precipitation (in)

Valid: 00z Sat 18 Nov 2017 - 00z Thu 23 Nov 2017

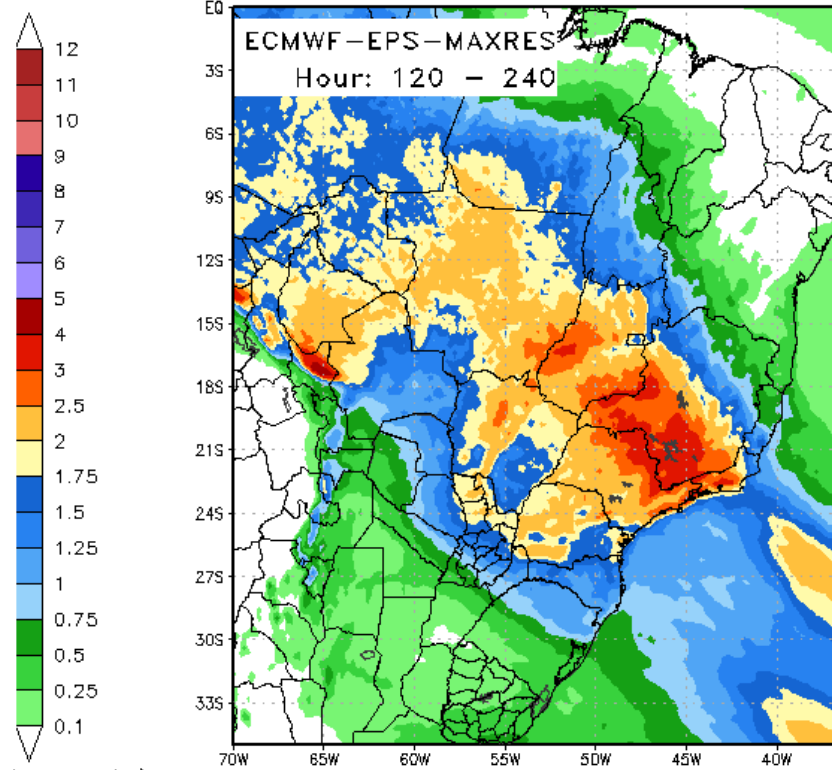


Max: 6.5 in
Min: 0.0 in

StormVistaWxModels.com

120 Hour Total Precipitation (in)

Valid: 00z Sat 18 Nov 2017 - 00z Thu 23 Nov 2017



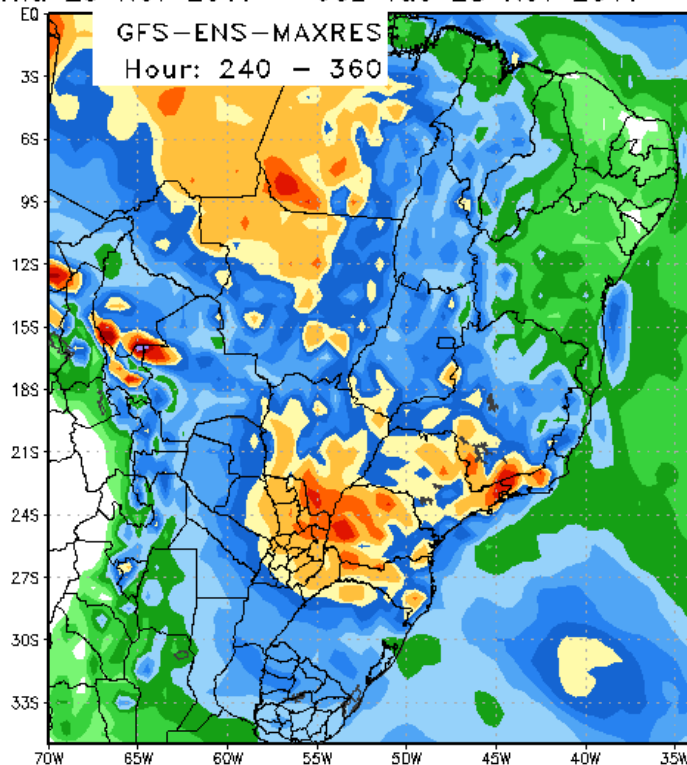
Max: 5.1 in
Min: -0.0 in

StormVistaWxModels.com

11-15 DAY ENSEMBLE

the fairly wet pattern continues in the 11 to 15 day with a pretty good model agreement and only minor discrepancies. The GFS has more rain over northern and Central Argentina than the European does. But both models also keep bahia mostly dry over this timetable.

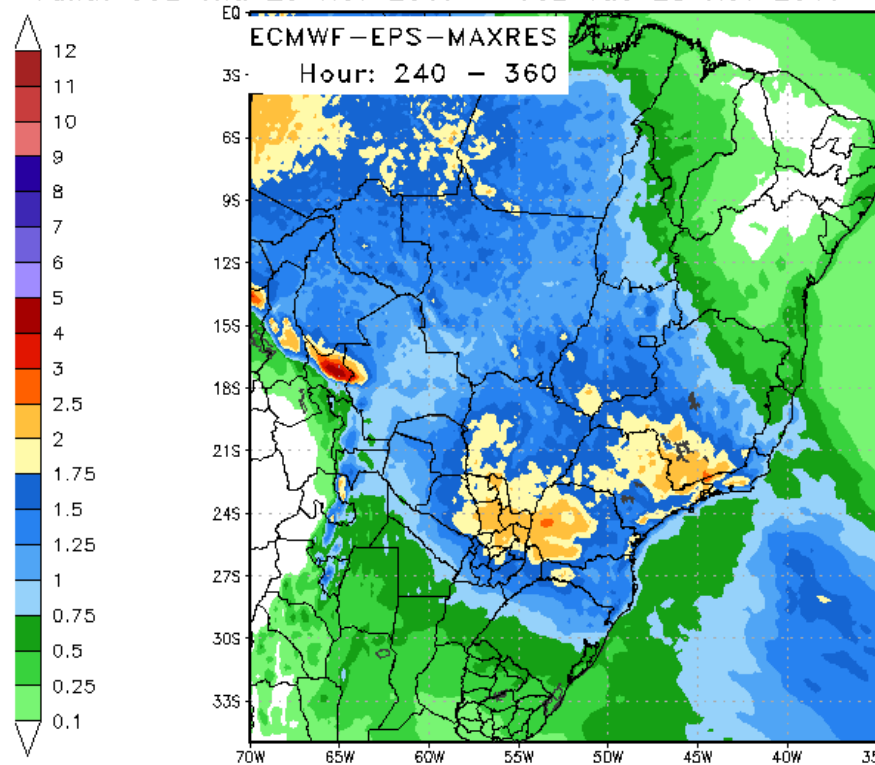
120 Hour Total Precipitation (in)
Valid: 00z Thu 23 Nov 2017 - 00z Tue 28 Nov 2017



Max: 6.0 in
Min: 0.0 in

StormVistaWxModels.com

120 Hour Total Precipitation (in)
Valid: 00z Thu 23 Nov 2017 - 00z Tue 28 Nov 2017



Max: 4.7 in
Min: -0.0 in

StormVistaWxModels.com

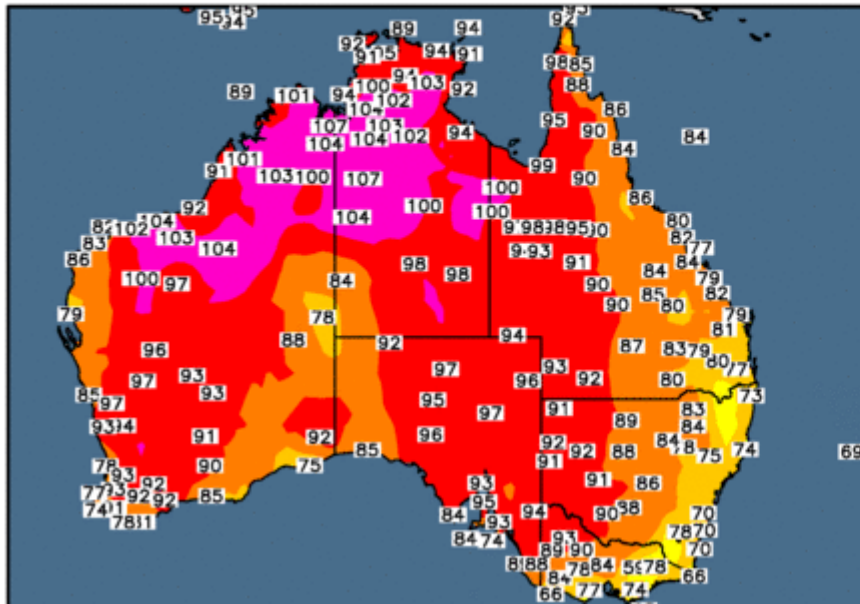
AUSTRALIAN GRAIN WX

There is not a lot of rain to talk about in Australia of the next 10 days. It certainly looks pretty dry out there but will be some scattered activity over the interior portions of southwest Australia which might be moderately beneficial. One thing that is significant is that the models are showing increasing amounts of heat over Southern Australia. So far this season has been pretty cool their of all the heat over the northern half of the continent but the data clearly shows that's going to change here over the next two weeks.

As you can see temperatures warmed significantly over much of southwestern Australia over the past 2 days and temperatures moved into the low to mid 90s/ 32-35c over much of eastern portions of the Southern Australia Territory and in western portions of New South Wales.

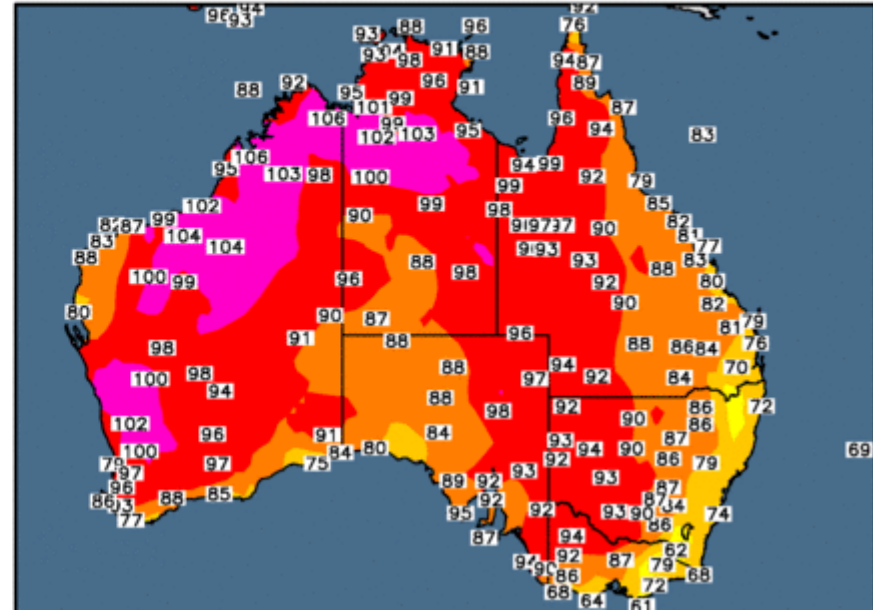
Observed Maximum Temperature (°F)

10 Nov 2017



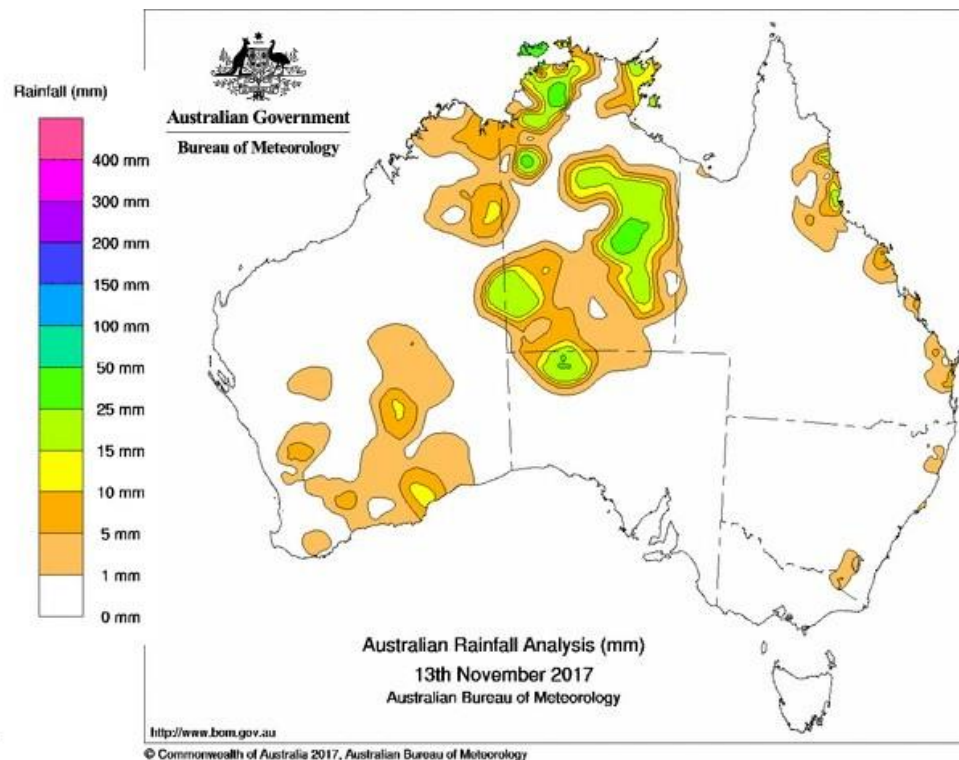
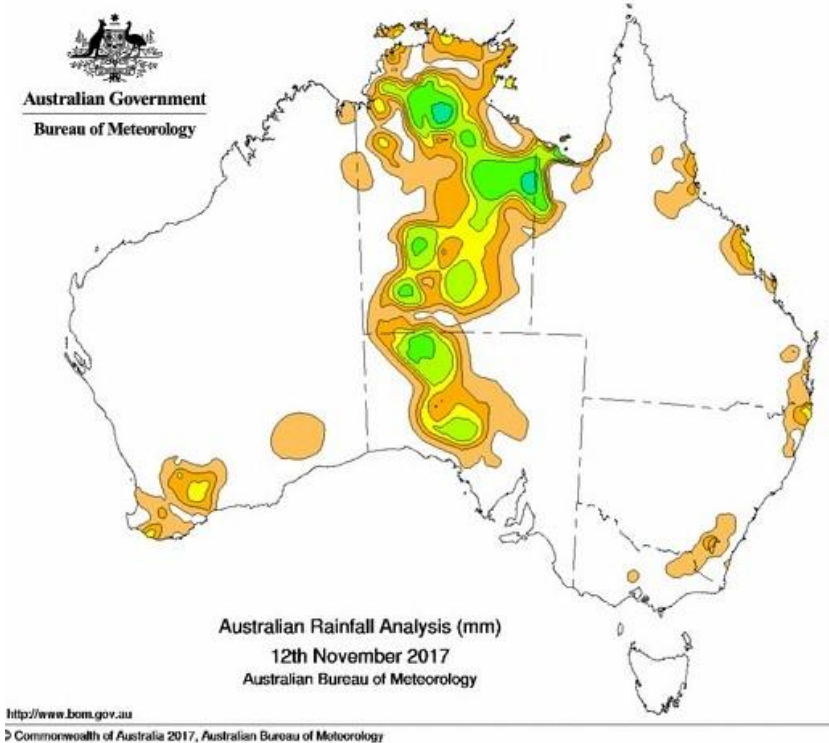
Observed Maximum Temperature (°F)

11 Nov 2017



RAINFALL last 2 days - NOV 11-12 and NOV 12-13

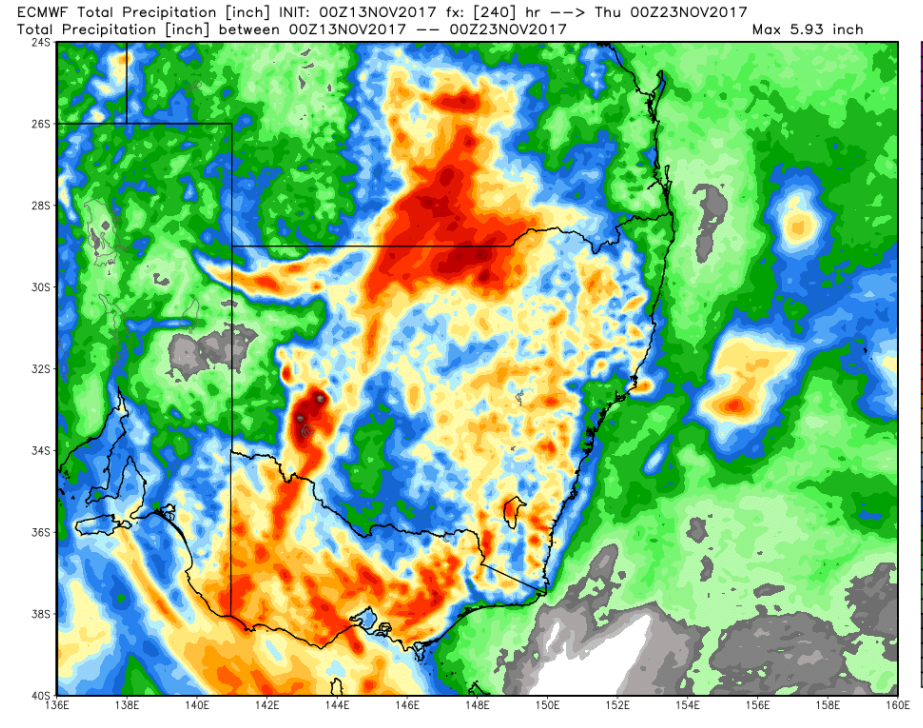
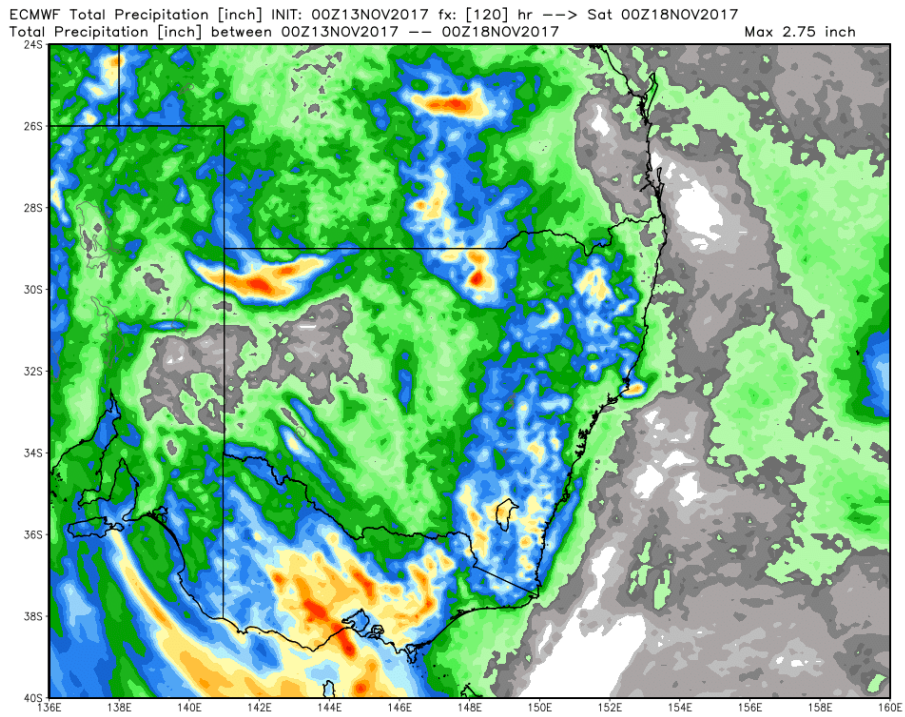
Rainfall and all areas of the Australian grain regions were it not significant the past two days. There was some light scattered rains under 10mm over interior portions of southwestern Australia but they were not significant.



T.

SOUTHEAST AUSTRALIA 1-5 DAY and 6-10DAY

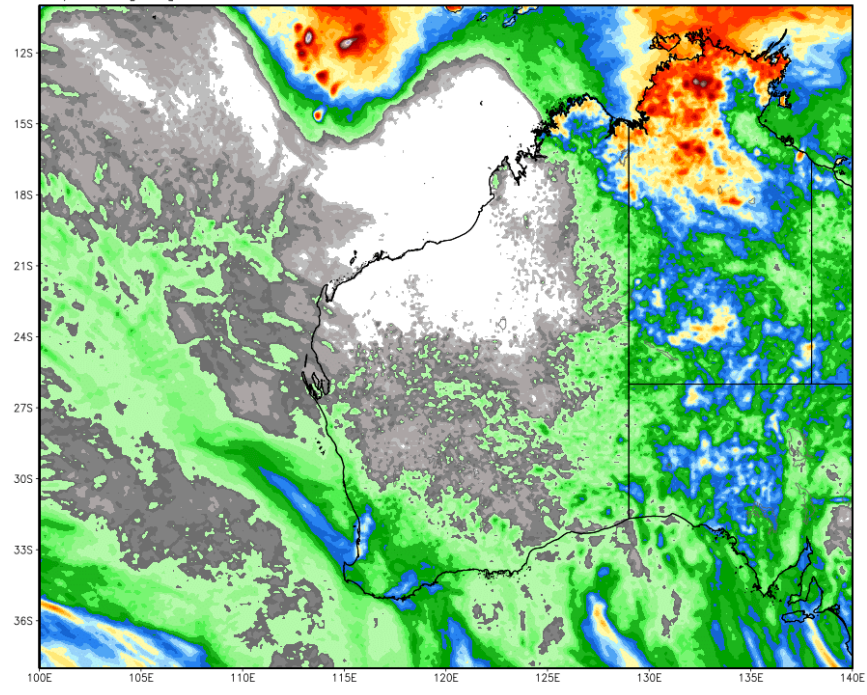
The pattern does turn a little wetter over next 10 days across southeastern third of Australia. Over the next 5 days most of Victoria will see significant rains up to 1.5"/ 38mm ... whereas eastern portions of New South Wales along the coastal range will see rains between 0.25-1.0"/ 6-25mm Central portions New South Wales and the southeast third of Queensland see moderate rains of 0.25-1.25" / 6-32mm with about 50 to 60% coverage. In the 6-10DAY notice that there is significant rains falls over much of central and northern New South Wales as well as increased rains over the interior southeastern Queensland. Rainfall amounts here generally between 1 -2"/ 25-50mm with very good coverage over 60%. In addition Queensland sees a least another 25, / 1.0" in the 6-10DAY



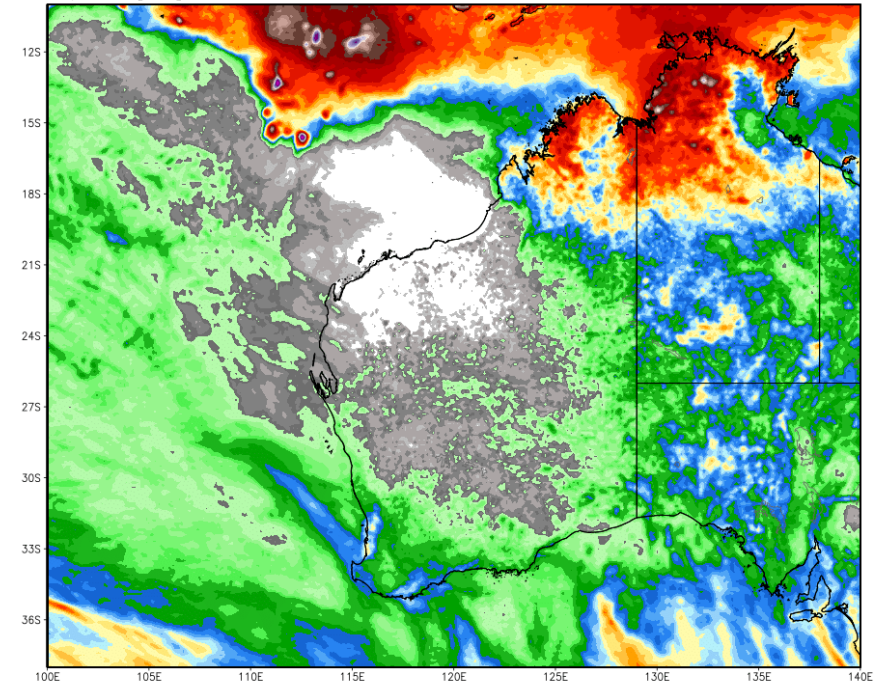
SOUTHWEST AUSTRALIA 1-5 DAY and 6-10DAY

Over southwestern third of Australia the only significant rain that shows up in the next 5 days. The southwest 25% of Australia will see anywhere from 0.25 -0.75"/ 6-20mm and most of this rain is in the short term. The models keep all of southwestern Australia dry in the 6-10 DAY

ECMWF Total Precipitation [inch] INIT: 00Z13NOV2017 fx: [120] hr --> Sat 00Z18NOV2017
Total Precipitation [inch] between 00Z13NOV2017 -- 00Z18NOV2017 Max 7.98 inch



ECMWF Total Precipitation [inch] INIT: 00Z13NOV2017 fx: [240] hr --> Thu 00Z23NOV2017
Total Precipitation [inch] between 00Z13NOV2017 -- 00Z23NOV2017 Max 13.85 inch



DT wxrisk.com OFFICE 804 715 8330 CELL 804 307 8070